

SHAVE BETWEEN 5 MIN AND 24 HOURS



# Sika<sup>®</sup> Loadflex<sup>®</sup>-524 EZ

**POLYUREA JOINT FILLER**

**FAST SETTING, SEMI-RIGID, EASY TO SHAVE**

- Flexible shave window - shave between 5 min and 24 hours
- Non-staining
- No bubbles during application
- Moisture insensitive

Available in

10 gallon kit - each pail 5 gal (18.92 liters)



**BUILDING TRUST**





# Sika® Loadflex®-524 EZ

## POLYUREA JOINT FILLER

### APPLICATIONS

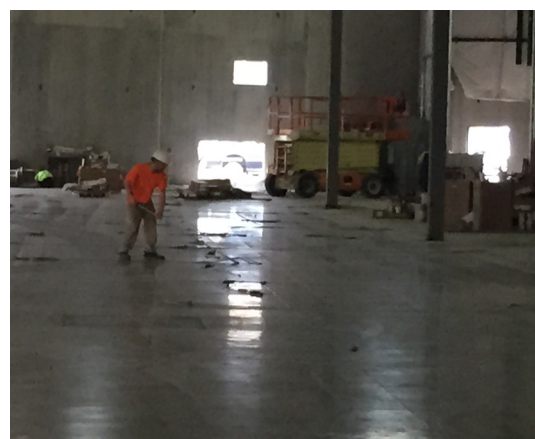
- Control joints interior concrete floor
- Distribution center floor
- Warehouse floors
- Manufacturing area floors

### ADVANTAGES

- Fast cure
- Shave between 5 min and 24 hours
- Moisture insensitive
- No bubbling
- Good color retention

### KEY PROPERTIES

- 1:1 mix ratio
- Shore A            ASTM D2240            80-85
- Elongation        ASTM D638                100%
- Tensile            ASTM D638                652 psi
- Light traffic      15 min
- Full traffic        30 min



## FOR MORE INFORMATION:

Contact Sika: Phone 800.933.SIKA(7452) Website: [www.sikausa.com](http://www.sikausa.com)

**Sika Corporation**  
 201 Polito Avenue  
 Lyndhurst, NJ 07071  
 Phone: 201-933-8800  
 Fax: 201-933-6225

