



ROOFING  
SIKALASTIC® ROOFPRO  
REINFORCED LIQUID-APPLIED  
ROOFING AND  
WATERPROOFING SOLUTIONS

BUILDING TRUST



# ADVANCED TECHNOLOGY: SEAMLESS LIQUID APPLIED ROOFING AND WATERPROOFING

## SIKALASTIC® ROOFPRO SYSTEMS

### **SINGLE COMPONENT TECHNOLOGY**

Sikalastic® RoofPro membrane resins eliminate the labor costs, inconvenience, and potential error involved in mixing multiple components. Our technology promotes complete even curing without variations in membrane performance that can occur if proper mixing ratios of multiple components are faulty. Application working time is greatly extended, minimizing material waste which can occur due to premature curing and unused material.

### **REFLECTIVE, FIRE-RATED, WIND-RATED, AND ALKALINE-RESISTANT**

Sikalastic® RoofPro systems meet or exceed many industry standards. Our resins are available in colors with a Cool Roof Rating reflectivity. They are tested to ASTM E-108 Class A fire resistance, wind uplift ratings up to 1-990, and they have an alkalinity resistance. No additional surfacing is needed to achieve these performance ratings.

### **SIKALASTIC ROOFPRO SYSTEMS WITH MTC (Moisture-Triggered Chemistry)**

This unique technology is incorporated with our resins and allows the material to use atmospheric moisture to trigger the curing process. The waterproofing membranes are capable of curing in a wide range of conditions including extreme temperatures and humidity variances.

Moisture-triggered chemistry provides Sikalastic® RoofPro systems with an increased tolerance to substrate and incidental moisture at the time of application.

The systems are waterproof shortly after application, providing protection against sudden rainstorms and adverse weather conditions.

### **DUE TO ITS UNIQUE MOISTURE-TRIGGERED CHEMISTRY, OUR SYSTEMS PROVIDE NUMEROUS INSTALLATION ADVANTAGES THAT OTHER LIQUID-APPLIED SYSTEMS CANNOT MATCH:**

- SIKALASTIC® ROOFPRO POLYURETHANE SYSTEMS DO NOT RELEASE CO<sub>2</sub> DURING THE CURING PROCESS, WHICH CAN CAUSE OUTGASSING AND BUBBLING
- TYPICAL POLYMETHYL METHACRYLATE AND OTHER MULTI-COMPONENT SYSTEMS, ARE COMPLICATED TO USE AND HAVE A HIGH WEATHER SENSITIVITY
- SIKALASTIC® ROOFPRO SYSTEMS ARE MORE APPLICATOR FRIENDLY AND ARE VERY WORKABLE IN TEMPERATURE EXTREMES, PARTICULARLY HOT WEATHER
- UNLIKE HOT-APPLIED RUBBERIZED SYSTEMS, SIKALASTIC® ROOFPRO SYSTEMS DO NOT REQUIRE A SEPARATE UV-RESISTANT PROTECTION LAYER, AND DO NOT REQUIRE SEPARATE SHEET RUBBER FLASHING MATERIALS



## KEY SYSTEM BENEFITS

Using liquid-applied technology eliminates traditional roofing and waterproofing weaknesses and enhances system performance:

- ELIMINATING CAUSES OF SYSTEM FAILURES
  - > SEAMLESS APPLICATION, ELIMINATES LAP SEAMS
  - > INTEGRATED SELF-ADHERING, SELF-TERMINATING FLASHINGS, ELIMINATES TERMINATION BARS AND CAULKING
- LIQUID APPLIED MEMBRANE AND FLASHINGS CONFORM TO VIRTUALLY ANY SHAPE AND PROFILE, EFFECTIVELY ELIMINATING PITCH PANS, METAL SLEEVES, ETC.
- 100% MEMBRANE AND FLASHING REINFORCEMENT PROVIDES ENHANCED STRENGTH AND DURABILITY THROUGHOUT
- DIRECT BONDING TO THE SUBSTRATE PREVENTS LATERAL WATER MIGRATION

Offering a wide range of applications, Sikalastic® Roofpro provides excellent solutions for many roofing and waterproofing applications:

## ROOFING

### Built-Up Insulated Roofing

Reflective, energy-efficient application over cover board and polyisocyanurate foam insulation

### Direct-to-Substrate Roofing

Heavy-duty application to structural concrete and wood decks

### Protected Membrane Roofing

Seamless, self-flashing installation under extruded polystyrene insulation with stone or concrete paver ballast

### Recover Roofing

Direct application to existing asphaltic, modified bitumen, and single-ply membranes, potentially eliminating the need for costly replacement of the existing roof

### Adds Minimal Additional Weight

Less than 1 psf.

## REPAIR

### Existing Flashings

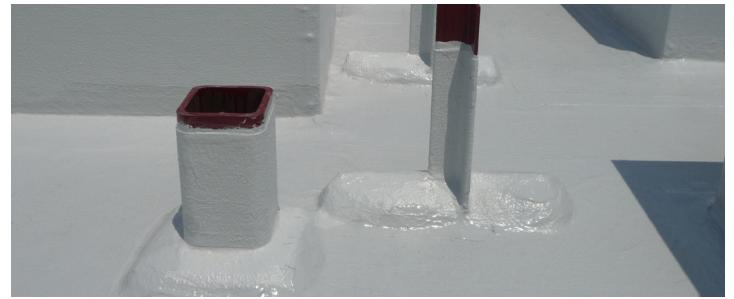
Replace deteriorated wall, base, and penetration flashings, pitch pans, expansion joints, etc.

### Unique Conditions

Through-wall flashings, lintel protection, stairs and walkways, planters and tree pits



- EXCEPTIONAL ADHESION TO MOST COMMON SUBSTRATE MATERIALS INCLUDING: CONCRETE, BRICK, TERRA-COTTA, LIMESTONE, WOOD, GLASS, COPPER, STEEL, ALUMINUM, EXISTING BITUMINOUS ROOFING, AND MANY SINGLE-PLY MEMBRANES
- SAME-DAY PRIMER AND MEMBRANE INSTALLATION IS POSSIBLE



## RESTORATION

### Decorative Elements

Preserve and protect water tables, ledges, eyebrows, cornices, built-in gutters, dormers, domes, etc.

### Metal Roofing

Retain profile of standing seam, valleys, batten, and flat seam roofing; seal overlap joints, penetrations, and other problematic areas



## WATERPROOFING

### Plaza Deck Waterproofing

Seamless, self-flashing waterproofing under tile, concrete pavers, brick, asphalt, paving stones, concrete, or asphalt pavement

### Balcony and Terrace Waterproofing

Alkaline-resistant waterproofing under tile, pavers, and wood decking. Waterproofing membrane can be applied with integral decorative aggregate or terrazzo or terrazzo-flaked surfacing

**Vegetated Roofing** – Root and rot-resistant waterproofing under growing media and associated hardscape



## REINFORCEMENT OPTIONS: ALLOW EXCEPTIONAL VERSATILITY IN APPLICATION, EVEN ON THE SAME PROJECT

### Reemat Fiberglass Mat

High tensile-strength reinforcement, eliminates visible reinforcement overlaps, conforms to many flashing conditions without special cutting and fitting

**Non-Woven Polyester Fleece** – Defined-thickness reinforcement, allows a single-pass wet-on-wet application, ideal for many flashing conditions with sharp bends and angles

## RESIN OPTIONS: AVAILABLE WITH A NUMBER OF OUR LIQUID PRODUCTS PROVIDING COST-EFFECTIVE, HIGH PERFORMANCE SOLUTIONS TO VARIOUS ROOFING AND WATERPROOFING APPLICATIONS



### Sikalastic®-621 TC:

Moisture-triggered polyurethane base and top coat resin for use with fiberglass Reemat and polyester Fleece reinforcements giving added fire resistance

### Sikalastic®-641 Lo-VOC:

Low odor, Low VOC version of Sikalastic-621 TC, meets California SCAQMD requirements, formulated patented with Sika's i-Cure technology for a non-outgassing, no Co2 emitting cure

### Sikalastic®-624 WP:

Moisture-triggered polyurethane base and top coat resin for use with fiberglass Reemat and polyester Fleece reinforcements with added Alkaline resistance for cementitious overburden applications

### Sikalastic®-644 Lo-VOC:

Low odor, Low VOC version of Sikalastic-624 WP, meets California SCAQMD requirements formulated patented with Sika's i-Cure technology for a non-outgassing, no-Co2 emitting cure

## ROOFING AND WATERPROOFING WARRANTIES:

Warranties are available depending on system configuration. Sikalastic® RoofPro systems are available for 10, 15, 20, and 25+ year durations. Warranted systems require project registration approval by the Sika Technical Department, and field inspection of the installation by Sika Technical Field Representatives.

### SINGLE SOURCE WARRANTIES

These are an extension of the Sika warranty program. Sikalastic® RoofPro systems are able to provide building owners with single source warranty coverage, ensuring component compatibility throughout the roofing or waterproofing assembly.

### RoofPro Built-Up System Assembly:

Includes vapor barrier, insulation, cover board, insulation adhesive, insulation screws & plates, flashings + edge metal

### RoofPro Plaza Deck/Protected Membrane System Assembly:

Includes drainage mat, extruded polystyrene insulation, concrete pavers & pedestals, flashings + edge metal

### RoofPro Vegetative/Hardscape System Assembly:

Includes drainage mat, extruded polystyrene insulation, water retention mat, filter fabric, growing media & sedum, concrete pavers & pedestals, flashings + edge metal



## TECHNICAL SUPPORT

Sikalastic® RoofPro systems are supported nationwide by Sika professional technical and sales representatives; they are experienced in developing and overseeing cost effective solutions for a wide range of application conditions.

CSI-format editable guide specifications and CAD-based assembly and flashing details are available.

Technical field services are provided by a dedicated team of hands-on experts in liquid applied technology.

## PRIMER MATRIX

Substrate	EP Primer / Sealer	EP Primer Rapid	Concrete Lo-Voc Primer	EPDM/TPO Lo-VOC Primer	GDC Primer	DTE Epoxy Primer	Sikalastic Conductive Primer	Sikaflex - Primer 449	Sika Bonding Primer	Reacoat Primer	Reactivation Primer	Sika Joint Tape SA Primer
Concrete	X	X	X									
New Concrete (48 hour cure)					X	X <sup>1</sup>						
Metal	X	X										
Lead/Zinc/Copper	X	X										
EPDM/TPO				X								
PVC (soft, sheet)	X											
Urethanes			X <sup>2</sup>							X	X	
Bituminous	X	X										
Wood	X	X	X		X							
Gypsum Board	X	X	X									
Cement Board	X	X	X									
Cementitious/Light Weight Structural	X	X	X									
Terra Cotta	X	X	X									
Brick / Stone	X	X	X									
Hard PVC (pipes)								X				
Non-Conductive Substrate							X					
Acrylic Coating										X		
Paint									X <sup>3</sup>			
Cold Weather Joint Tape Application												X

### NOTES:

1. Moisture content in the substrate has to be 6% or less
2. Concrete LoVoc Primer is only used with 641 & 644 coatings
3. Requires surface evaluation and field adhesion testing

# APPLICATION OVERVIEW (\*\*IF SPECIFIED)

**Step 1 - Substrate Preparation**



**Step 2 - Insulation/Cover Board \*\***



**Step 3 - Primer Application**



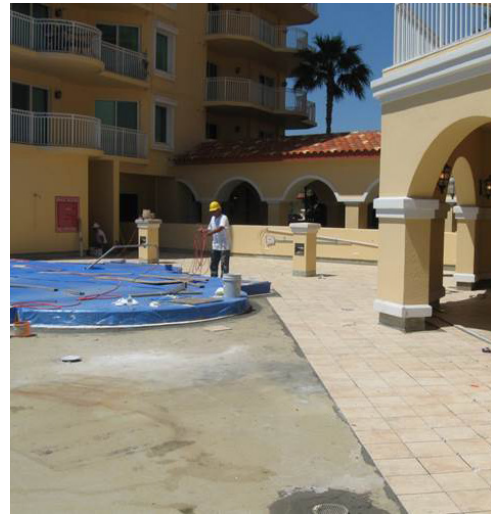
**Step 4 - Detailing/Flashing**



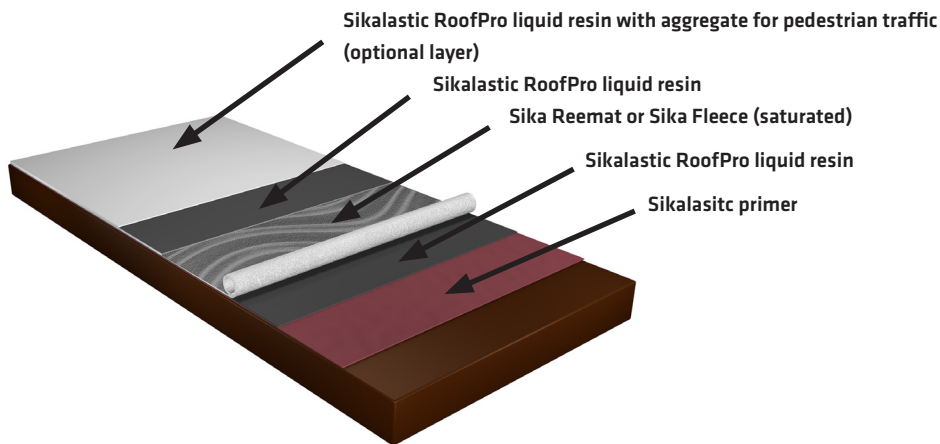
**Step 4 - Membrane Application**



**Step 6 - Surfacing/Overburden\*\***



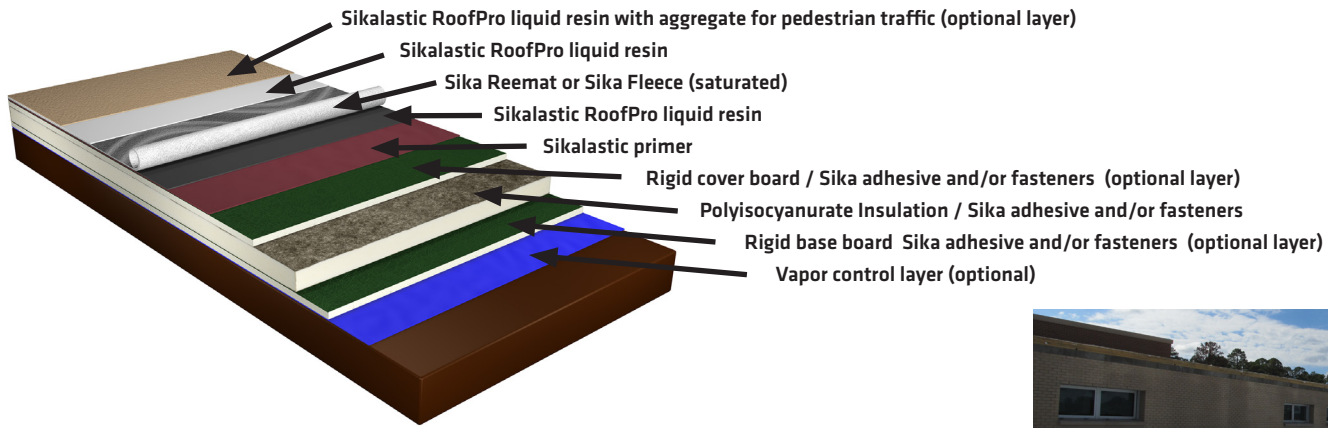
## SIKALASTIC® ROOFPRO DIRECT-TO-SUBSTRATE ASSEMBLY



Suitable for direct application to structural concrete decks, plywood decks, and many existing smooth and granule-surfaced roofing systems. Reference Product/System Data Sheets for membrane/system requirements.



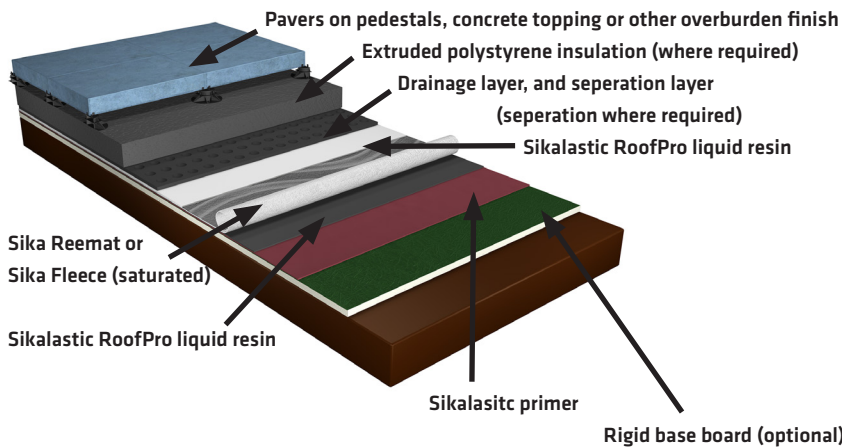
## SIKALASTIC® ROOFPRO BUILT-UP INSULATED ASSEMBLY



Suitable for applications requiring the installation of insulation, including new construction, roof replacement, and upgrading of existing roofing systems. Full System Warranty available. Reference Product/System Data Sheets for membrane/system requirements.

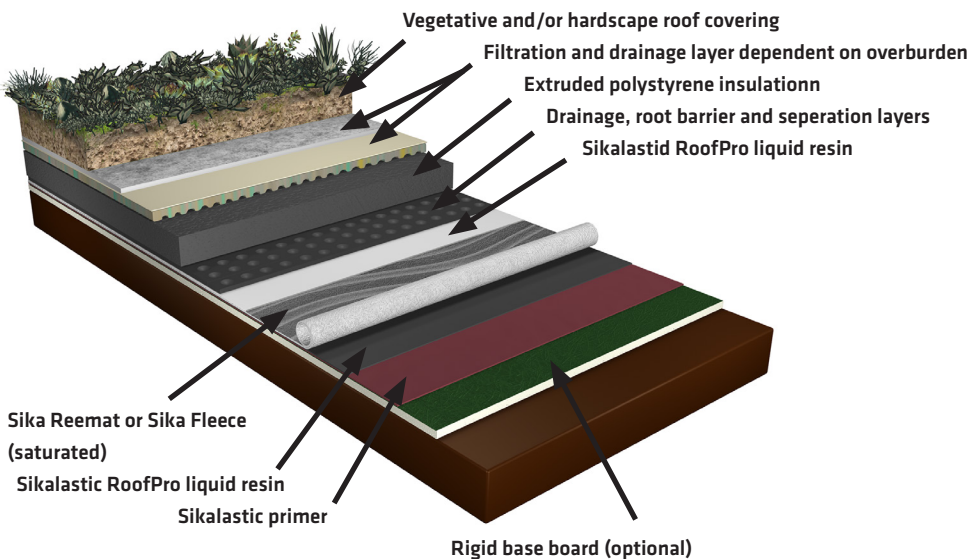


## SIKALASTIC® ROOFPRO BUILT-UP INSULATED ASSEMBLY



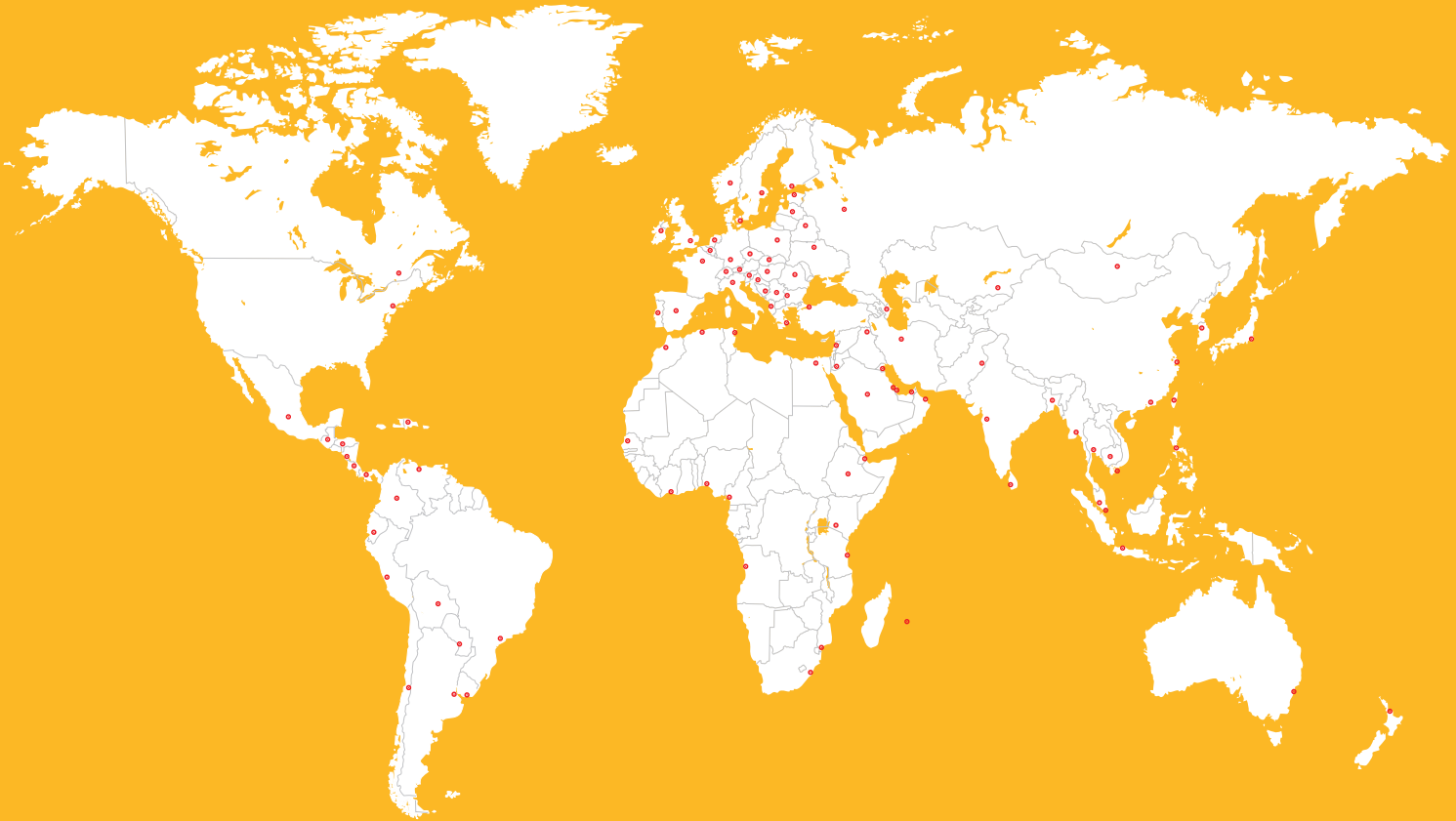
Suitable for applications where pavers, wood decking, or tile will be installed over the roofing/waterproofing membrane. An insulation layer may or may not be included. Full System Warranty available. Reference Product/System Data Sheets for membrane and system requirements.

## SIKALASTIC® ROOFPRO VEGETATED AND HARDSCAPE ASSEMBLY



Suitable for both intensive and extensive vegetated roofing applications where growing media and plantings will be installed over the roofing/waterproofing membrane. Typical applications include hardscape such as concrete pavers or stone ballast. An insulation layer may or may not be included. Full System Warranty available. Reference Product/System Data Sheet for membrane and system requirements.

# GLOBAL BUT LOCAL PARTNERSHIP



VISIT OUR WEBSITE FOR:  
SIKA LAM CONTACTS INFORMATION  
ABOUT OUR PRODUCTS AND SYSTEMS



## WE ARE SIKA

With more than 100 years of experience, Sika is a worldwide innovation and sustainability leader in the development and production of systems and products for commercial and residential construction, as well as the transportation, marine, automotive, and renewable energy manufacturing industries.

Sika has offices in 103 countries with over 400 manufacturing facilities and more than 33,000 employees worldwide. With annual sales of CHF 11.24 billion in 2023, our commitment to quality, innovation, and the environment as well as putting our customer's needs first, encompasses why Sika is the global leader in our industries.



## SIKA CORPORATION • ROOFING

100 Dan Road • Canton, MA 02021 • USA  
East Tel: 888-552-9769 West Tel: 888-509-3350  
Fax: 781-828-5365  
webmaster.sarnafil@us.sika.com  
usa.sika.com

© Sika Corporation / 06.807.5 / 04/2024

**BUILDING TRUST**

