



# FACT SHEET

## SIKA ANCHORFIX<sup>®</sup>-3001

HIGH PERFORMANCE TWO COMPONENT (1:1 RATIO) ANCHORING SYSTEM

Certified to  
NSF/ANSI 61  
by  
IAPMO R&T  
(file K-8319)



|   |           |                  |
|---|-----------|------------------|
| ✓ | ICC       | ESR-3608         |
| ✓ | IBC       | 2003, 2006, 2009 |
| ✓ | IRC       | 2003, 2006, 2009 |
| ✓ | IAPMO R&T | NSF/ANSI 61      |

BUILDING TRUST



# SIKA ANCHORFIX<sup>®</sup>-3001

HIGH PERFORMANCE TWO COMPONENT (1:1 RATIO) ANCHORING SYSTEM

## APPLICATIONS

- Structural Applications
- Rebar & starter bar
- Safety barriers
- Balcony fences
- Rolling cranes
- Heavy machinery
- Structural steel to concrete
- Suitable for applications prone to dynamic loads
- Resistance to seismic actions
- External Environmental
- Extended working time

## FEATURES

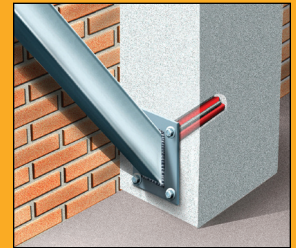
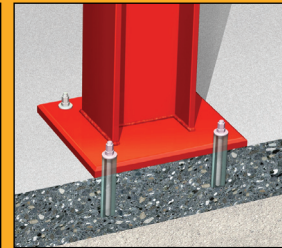
- Approved by ICC ES ESR-3608
- Certified by IAPMO R&T for NSF/ANSI 61 File # K-8319
- Compliance with the 2003, 2006 & 2009 IBC
- Compliance with the 2003, 2006 & 2009 IRC
- Anchoring close to free edge
- Versatile
- Anchoring without expansion forces
- High load capacities
- Available in a wide range of cartridge sizes 8.4 US fl. oz. (250ml), US 20.2 fl. oz. (600ml) & 50.7 US fl. oz. (1500ml)
- High performance two component (1:1 ratio) anchoring system for threaded rod and rebar in both cracked and uncracked concrete.
- Extended gel time
- Dry, Water Saturated & Water Filled holes
- Wide range of embedment depths

## TYPICAL DATA

- **Shelf Life:** When stored correctly the shelf life will be a minimum of 24 months from the date of manufacture.
- **Storage Conditions:** Cartridges should be stored in their original packaging, the correct way up, in cool and dry conditions (+50°F to 77°F) out of direct sunlight

| Application                |              |              |
|----------------------------|--------------|--------------|
| Substrate Temperature      | Working Time | Loading Time |
| 40°F → 49°F (4°C → 9°C)*   | 20 min       | 24 hrs       |
| 50°F → 59°F (10°C → 15°C)* | 20 min       | 12 hrs       |
| 59°F → 72°F (15°C → 22°C)  | 15 min       | 8 hrs        |
| 72°F → 77°F (22°C → 25°C)  | 11 min       | 7 hrs        |
| 77°F → 86°F (25°C → 30°C)  | 8 min        | 6 hrs        |
| 86°F → 95°F (30°C → 35°C)  | 6 min        | 5 hrs        |
| 95°F → 104°F (35°C → 40°C) | 4 min        | 4 hrs        |
| 104°F (40°C)               | 3 min        | 3 hrs        |

\*Cartridge temperature maintained at minimum 50°F (10°C)



## FOR MORE AnchorFix<sup>®</sup> INFORMATION:

Contact Sika: Phone 800.933.SIKA(7452) Website: [www.sikausa.com](http://www.sikausa.com)



### SIKA CORPORATION

201 Polito Avenue  
Lyndhurst, NJ 07071  
Phone: 201-933-8800  
Fax: 201-933-6225

### SIKA CANADA

601 Delmar Avenue  
Point Claire,  
Quebec H9R 4A9  
Phone: 514-697-2610  
Fax: 514-694-2792

### SIKA MEXICANA S.A. DE C.V.

Carretera Libre Celaya km. 8.5  
Fracc. Industrial Balvanera  
Corregidora, Queretaro  
C.P. 76920  
Phone: 514-697-2610  
Fax: 52 442 2250537

BUILDING TRUST

