

# **Sika Armatec 110**

## **Application Instructions**



# Sika Armatec 110 EpoCem

## Bonding Agent and Reinforcement Protection

Sika Armatec 110 EpoCem is a 3-component, solvent-free, epoxy-modified, cementitious product specifically formulated as a bonding agent and an anti-corrosion coating



## Sika Armatec 110 EpoCem

- ▲ Where to use:
- ▲ As a anti-corrosion coating for reinforcing steel in concrete restoration
- ▲ As Added protection to reinforcing steel in areas of thin concrete cover
- ▲ As a bonding agent for repairs to concrete and steel
- ▲ As a bonding agent for placing fresh, plastic concrete to existing hardened concrete



# Sika Armatec 110 EpoCem

▲ Coverage:

**Bonding Agent:** minimum on smooth,  
even substrate 80 sq.ft./ gal  
(@20 mils)

**Reinforcement Protection:** 40 sq.ft./gal  
(@20 mils – 2 coat application)



# Sika Armatec 110 EpoCem

## ▲ Packaging:

### 3.5 Gal Unit:

“A” Comp: 47.6 fl. Oz.

“B” Comp: 122.1 fl. Oz.

“C” Comp: multi-wall bag

### 1.65 Gal Unit:

“A” Comp: 22.7 fl. Oz.

“B” Comp: 57.6 fl. Oz.

“C” Comp: 4 Bags @ 5.5 lbs ea.



# Surface Preparation

## Cementitious Substrates:

- Should be cleaned and prepared in accordance with the requirements specified by the overlay or repair material by blast cleaning or equivalent mechanical means.
- Substrate must be saturated surface dry (SSD) with no standing water.



## Surface Preparation

- ▲ **Steel:**
  - Remove corrosion and contaminants from exposed steel.
  - Surface should be cleaned and prepared thoroughly by blast cleaning.
  - Exposed steel should be cleaned to white steel.
  - Determine section loss, splice where more than 15-25% loss as directed the Engineer.
  - If half of the diameter is exposed, chip behind bar, 1/2" minimum for mortar only.



# SikaArmatec 110 EpoCem



1.65 Gal Unit



Comes packaged with 4 bags @ 5.5 lbs. excellent for smaller batches.



**Sika Corporation**



# Armatec 110 EpoCem- Tools

1.65 Gal Unit

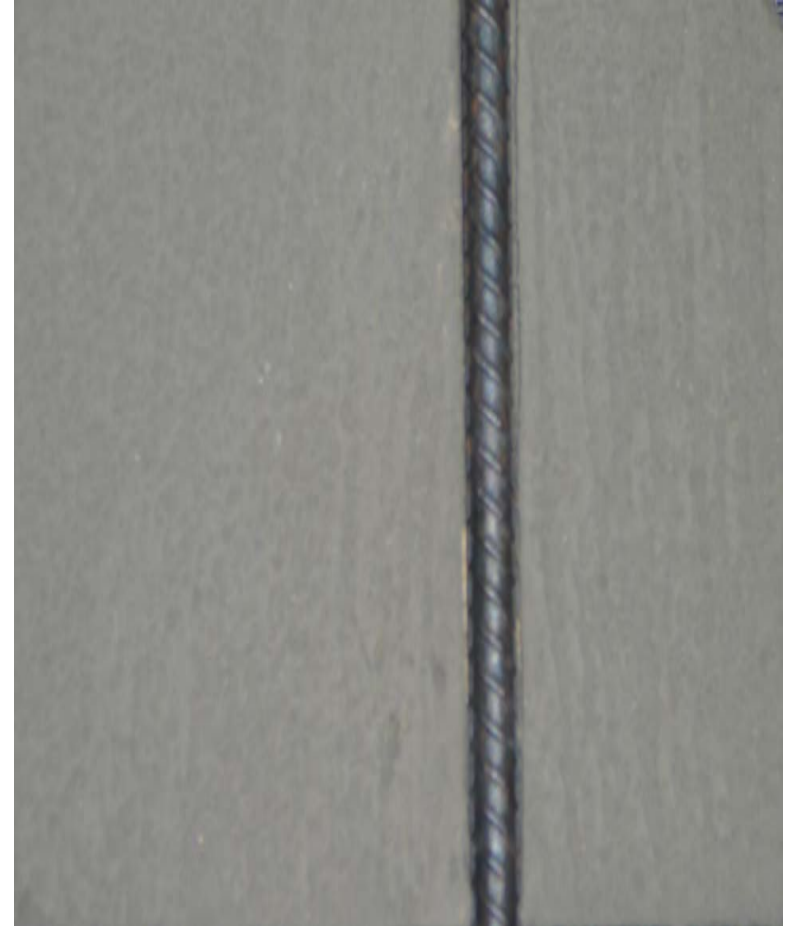
Comes packaged with 4 bags @ 5.5 lbs. excellent for smaller batches.



**Sika Corporation**

# Steel Preparation

Steel should be cleaned and prepared by blast cleaning



## Armatec 110 1.65 Gal Unit

A & B Comp. proportions are clearly marked on the side of the plastic jugs for easy mixing.



## Mixing

Shake contents of  
A & B Components.

**For 3.5 Gal Unit:**

Pour entire amount of  
both A & B  
Component into a  
clean dry pail.

**For 1.65 Gal Unit:**

Proportion according  
to markings on side of  
jugs



**Sika Corporation**



## Mixing

Mix liquid thoroughly for 30 seconds with a Sika paddle (jiffy mixer) on a low speed drill 400-600 rpm drill.



## Mixing

Slowly add entire “C” Component while continuing to mix for 3 minutes until blend is uniform and free of lumps.



**Sika Corporation**



## Mixing

While mixing for 3 minutes stop to scrape down the sides to insure all material is fully mixed



## Corrosion Protection Only:

Apply at 80 sq.ft./gal  
(20 mils).

Take special care to properly coat the underside of the totally exposed steel. Allow Coating to dry 2-3 hours @ 73 degrees F.





## Corrosion Protection Only:

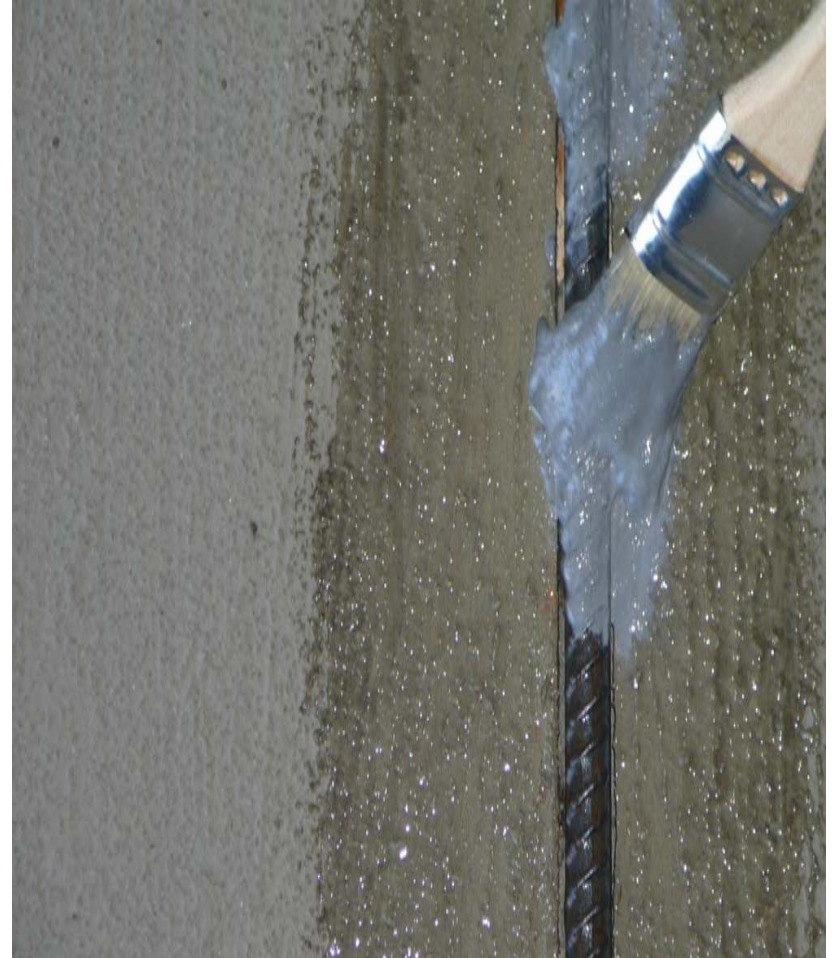
Apply second coat at same coverage after waiting 2-3 hour for first coat to dry.



## Bonding Agent & Rebar Protection

**First Coat:** Apply at 80 sq.ft./gal (20 mils).

Take special care to properly coat the underside of the totally exposed steel. Allow Coating to dry 2-3 hours @ 73 degrees F.

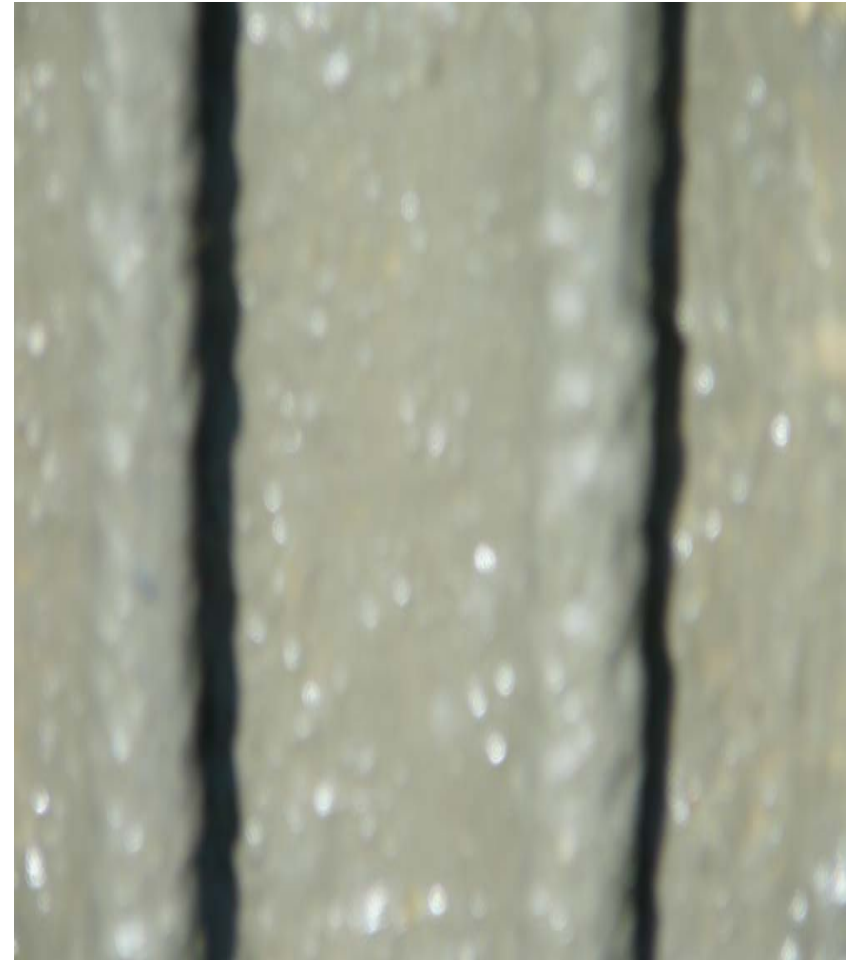


# Bonding Agent & Rebar Protection

## **Second Coat:**

Apply at 80 sq.ft./gal (20 mils) on both steel and concrete substrate. Proceed to applying repair mortar “wet-on-wet”.

If Armatec 110 is dry apply again prior to placing repair mortar.



# Sika Armatec 110 EpoCem

**Sika Technical Data Sheets can be obtained via**

**[www.sikaconstruction.com](http://www.sikaconstruction.com)**

**Refer to data sheets for specific information on each Sika product.**

