



# Sikagard® Flex Coat System

**Flex Coat**

Cement-based, flexible, waterproofing material

**Flex Coat ATC**

Acrylic Top Coat

**Flex Coat EM**

Embedding Mesh



## APPLICATIONS

- ▲ Balcony deck resurfacing
- ▲ Concrete exterior restoration
- ▲ Sidewalk resurfacing
- ▲ Wall refinishing and installation coating
- ▲ Stadium renovation
- ▲ Swimming pool walkways

## ADVANTAGES

- ▲ Can be applied over almost any clean surface, i.e. concrete, block, masonry, etc. for a various floor, wall, and roof uses
- ▲ Superior adhesion coupled with ability to withstand prolonged pedestrian and light vehicular traffic
- ▲ Waterproof coating reduces or prevents water penetration freeze-thaw scaling and concrete carbonation
- ▲ Surpasses performance of conventional cementitious coatings
- ▲ Breathable coating releases normal entrapped vapor without loosening or blistering.
- ▲ Available in natural cement color

## TYPICAL DATA

### Sikagard Flex Coat

- ▲ **Adhesion (ASTM C-882), Type I**  
515 psi
- ▲ **Absorption** - weight gain by 4" coated concrete cube after 21 days water immersion  
< 2%
- ▲ **Weathering (ASTM G23) Weatherometer** -  
Method 1 procedure, 60 cycles No visible degradation
- ▲ **Compressive Strength (ASTM C-109)** 2,440 psi
- ▲ **Tensile Strength (ASTM C-190)** 430 psi
- ▲ **Elongation (ASTM D-412)** 12%
- ▲ **Shore Hardness (ASTM D-2240)** Durometer "A" - 82
- ▲ **Water Vapor Permeability (E-96)** 1.96 perms/inches
- ▲ **Resistance to Wind-Driven Rain**  
Fed Spec. TT-C-558 (8 hrs.) & TT-P-0035 (24 hrs.)  
At 5" water pressure and 60 gal./hr. water flow  
No water or dampness noted on back of test panels

### Sikagard Flex Coat ATC

- ▲ **Gloss 60 Gloss Meter** 90+
- ▲ **Cleaning Solvent** water
- ▲ **Physical Properties**  
**Flexibility** - Excellent; **Weather** - Excellent; **Abrasion** - Excellent
- ▲ **Curing Time (77F)**  
Dry to touch - 1 hr.; Recoat - 4 hrs.; Traffic - 24 hrs.
- ▲ **Color Retention** No fading or deleterious effect. Atlas Twin-Arc Weatherometer, 20 min. Cycle; 17 min. Dry - 3 min.; Wet - 300 hrs.
- ▲ **Accelerated Ultraviolet Light Exposure**  
No fading or visible deleterious effect under 10x magnification. Desert Sunshine Exposure Test, Inc., Phoenix, AZ "Procedure EMMA" (mirror accelerated exposure).

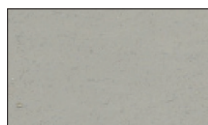
## Sikagard® Flex Coat System

Two-component, polymer-modified, cement-based waterproofing system

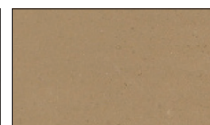


1. A 55 lb. bag is mixed with 2.5 gal. of liquid.
2. A notch squeegee being used to apply the first coat.
3. A roller being used to apply the second coat.
4. Sikagard Flex Coat ATC (Bright Gray) used as a finish coat for an aesthetically pleasing appearance.

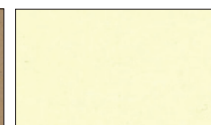
Available in the colors below



Bright Gray



Adobe



Ivory Cream

The above colors are only a representation of the actual color.  
Use cured product sample for color matching.

Contact Sika at:  
Phone: 1-800-933-SIKA (Nationwide)  
Website: [www.sikaconstruction.com](http://www.sikaconstruction.com)

**Sika Corporation**  
201 Polito Avenue  
Lyndhurst, NJ 07071  
Phone: 201-933-8800  
Fax: 201-933-6225

**Sika Canada Inc.**  
601 Delmar Avenue  
Pointe Claire  
Quebec H9R 4A9  
Phone: 514-697-2610  
Fax: 514-694-2792



**Sika Mexicana S.A. de C.V.**  
Carretera Libre Celaya Km. 8.5  
Fracc. Industrial Balvanera  
Corregidora, Queretaro  
C.P. 76920  
Phone: 52 442 2385800  
Fax: 52 442 2250537