

DID YOU KNOW?

WATER DROP TEST - ASTM F-3191

BUILDING TRUST



DEFINITION

In the industry, substrates should always be tested in order to determine if the substrate is **porous** or **non-porous**.

- A substrate is called **porous or absorbent** when a liquid is drawn into and tends to fill permeable pores in a porous solid body.
- A **non-porous substrate or non-absorbent**, will be impermeable to liquids.

ASTM F-3191

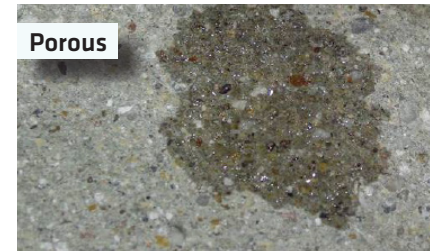
ASTM F-3191 developed a test in order to determine the porosity of the substrate, steps are listed here:

1. Substrate must be clean and free of dust
2. Place a single drop of portable water (quarter size) on the substrate using a pipette
3. Results determination

| Length of Time to Absorb | Substrate Determination |
|--------------------------|---------------------------|
| ≤1 minute | Porous/Absorptive |
| > 1 minute | Non-Porous/Non Absorptive |

4. Perform three tests for the first 2,000 ft² and at least one for each additional 3,000 ft².

Note: the size, shape and color of the water drop may indicate the presence of contaminants onto the substrate.



SIKA RECOMMENDATIONS

- Sika® recommends the use of:
- **Sika® Level-01 Primer Plus** on top of **porous** substrates
 - **Sika® Level-02 EZ Primer** on top of **non-porous** substrates

Each of these primers will give you what you need for your floor before any installation of Sika® Level underlayment and other varieties of floor covering.

Sika® Moisture Barriers such as Sika® MB and Sika® MB Redline and Sika® adhesives such as SikaBond®-T55, T35, T21, T15 and T100 require a porous substrate.



FOR MORE INFORMATION

Visit us at SikaSecure.com

SIKA
SECURE

Floor Covering: No. 5