

Fact Sheet



Sikacrete® 211

One component, cementitious, pumpable and pourable concrete mix



One-component, portland cement concrete containing factory blended coarse aggregate.

APPLICATIONS

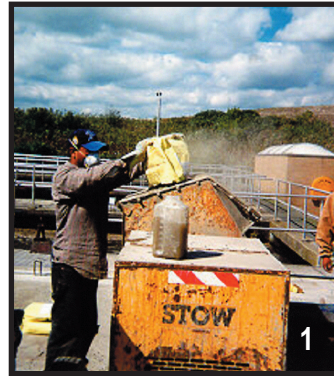
- ▲ 1" to full depth repairs.
- ▲ On grade, above, and below grade on concrete.
- ▲ On horizontal surfaces and into formed vertical and overhead surfaces.
- ▲ Repair material for parking facilities, industrial plants, walkways, bridges, tunnels, dams and balconies.
- ▲ Filler for voids and cavities.

ADVANTAGES

- ▲ Pre-packaged coarse aggregate.
 - Eliminates need to extend material in the field.
 - Eliminates the risk of reactive aggregate.
- ▲ High bond strength.
- ▲ Compatible with coefficient of thermal expansion of concrete.
- ▲ Easily mixed.

KEY DATA

- ▲ Application Time
 - Initial Slump 5"-7"
 - Slump at 30 minutes >4"
- ▲ Compressive Strength (ASTM C-39)
 - 1 Day 2,000 psi
 - 7 Days 4,500 psi
 - 28 Days 5,000 psi
- ▲ Shrinkage (ASTM C-157)
 - 28 days <0.05%
- ▲ Chloride Ion Permeability (ASTM C-1202)
 - 28 days <1,500 Coulombs



1. Sikacrete 211 is pre-extended with coarse aggregate and it may be mixed in a concrete mixer.

2. Sikacrete 211 has long slump retention, and excellent workability as it is poured into this formed repair area.

3. Sikacrete 211 handles similarly to concrete and finishes very easily.

4. Completed repair area.

Contact Sika at:
Phone: 1-800-933-SIKA (Nationwide)
Website: www.sikausa.com

Sika Corporation
201 Polito Avenue
Lyndhurst, NJ 07071
Phone: 201-933-8800
Fax: 201-933-6225

Sika Canada Inc.
601 Delmar Avenue
Pointe Claire
Quebec H9R 4A9
Phone: 514-697-2610
Fax: 514-694-2792



Sika Mexicana S.A. de C.V.
Carretera Libre Celaya Km. 8.5
Fracc. Industrial Balvanera
Corregidora, Queretaro
C.P. 76920
Phone: 52 442 2385800
Fax: 52 442 2250537