

3/4" HDPE Plastic Expansion Board

Sika's High Density Polyethylene (HDPE)

expansion board offers numerous advantages over conventional expansion board materials such as asphalt-impregnated fiberboard, pine or redwood.

- Excellent compression and recovery properties
- Will not rot or deteriorate
- Tough and durable; will not break with normal handling
- Lightweight, easy to handle
- Chemically resistant to a wide variety of chemical solvents
- Can be cut with conventional tools
- Will not split; can be fastened to stakes with screws or ring shank nails
- Excellent for use with Sika's Westec EB Cap Seal and Speed Dowel joint system

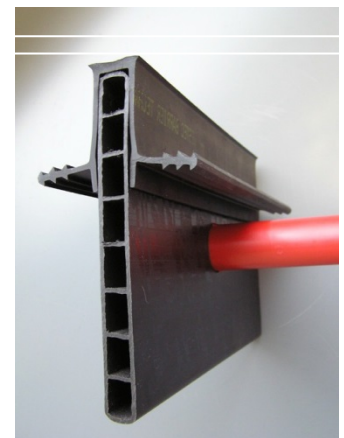


Physical Properties

Property	Test Method	Typical Value
Compressive Strength	ASTM D545	75 psi @ 50% deflection
Recovery from Deformation	ASTM D545	90%
Resistance to Handling	ASTM D1751	Complies

Standard Sizes: 3/4" x 5 1/2" x 10'
 3/4" x 7 1/2" x 10'

Special lengths available upon request



**Excellent for use with
Sika's Westec EB Cap
Seal and Speed Dowel
joint system**

Sika Corporation - US
201 Polito Avenue
Lyndhurst, NJ 07071
usa.sika.com

For More Information Contact
Sika – St. Louis Sales Office
3400 Tree Court Industrial Blvd.
63122, St. Louis, MO
Phone: 1-800-325-9504
Fax: 800-551-5145


WESTEC®

BUILDING TRUST

