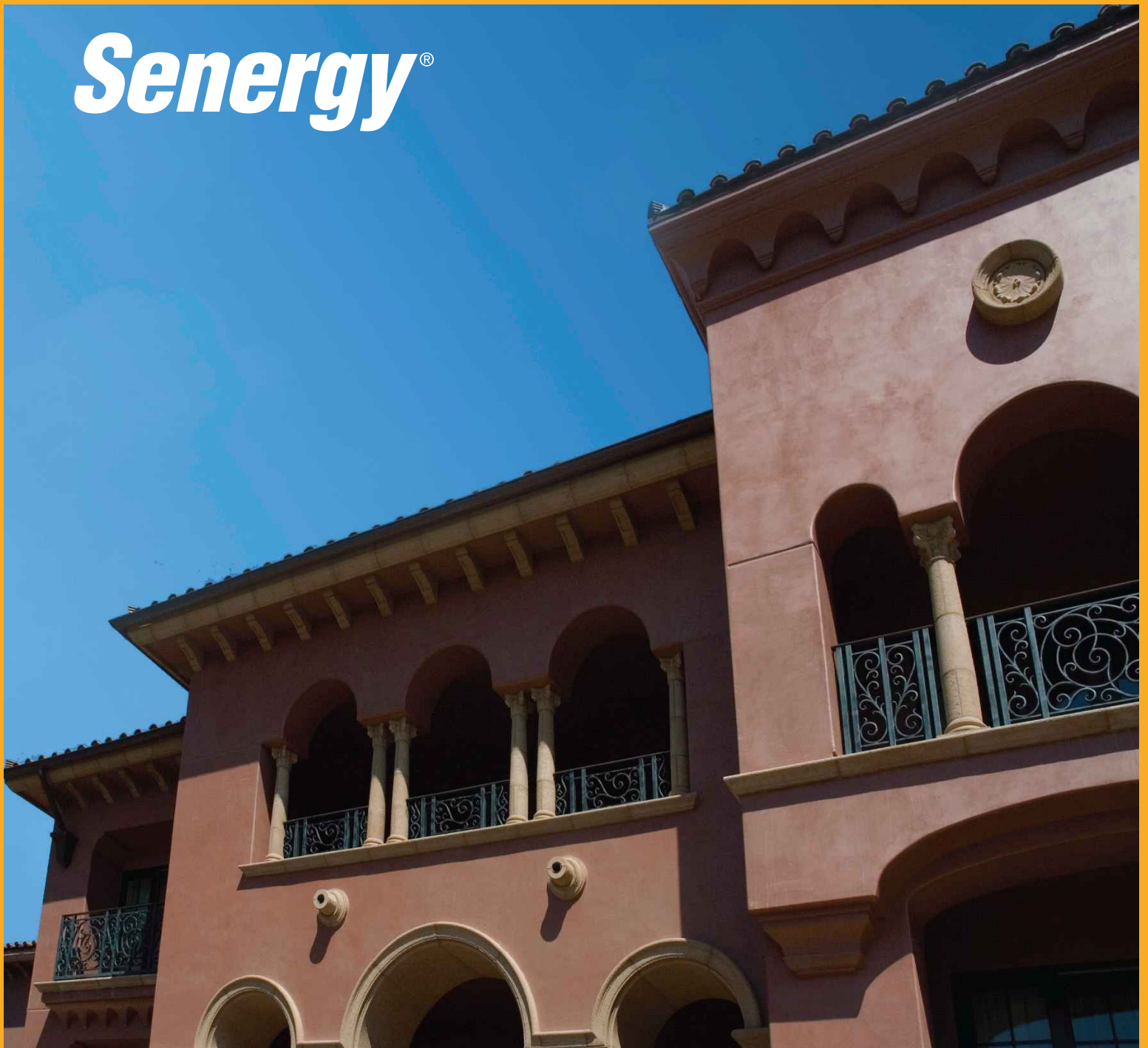


Senergy[®]



Platinum CI Stucco Ultra

Continuously Insulated Premium Cement Plaster Stucco Rain Screen System with Enhanced Water Management Featuring a Senershield-R/-RS/-VB Air/Water-Resistive Barrier

Typical Details

BUILDING TRUST



Platinum CI Stucco Ultra

Typical Details

Table of Contents

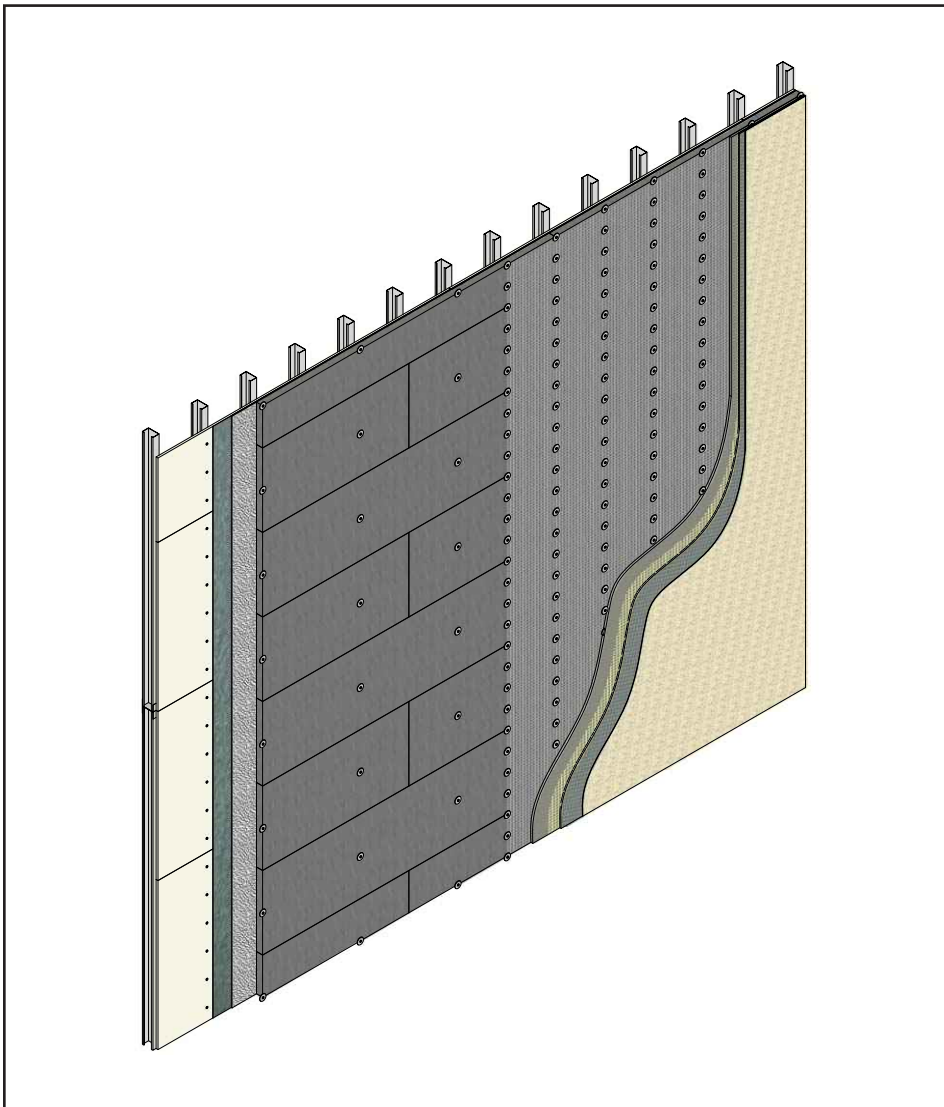
- | | |
|--|--|
| 1. Fastening Pattern | 16. Flanged Window Head |
| 2. Framed / Sheathed Construction | 17. Window Jamb (Flush) |
| 3. Masonry / Concrete Construction | 18. Window Jamb (Recessed) |
| 4. Termination at Foundation – Flush with Casing / Stop Bead | 19. Flanged Window Jamb |
| 5. Termination at Foundation with Casing / Stop Bead | 20. Window Sill (Flush) |
| 6. Termination at Foundation with CI Weep Track | 21. Window Sill (Recessed) |
| 7. Change in Substrate | 22. Flanged Window Sill |
| 8. Trim Junction | 23. Pipe Penetration |
| 9. Surface Control Joint | 24. Dryer Vent |
| 10. Inside Corner Control Joint – Framed / Sheathed Construction | 25. Downspout |
| 11. EPS Shape Application | 26. Light Fixture |
| 12. Corner Bead | 27. Termination at Metal Coping / Roof Edge Flashing – Option 01 |
| 13. Decorative Shape | 28. Termination at Metal Coping / Roof Edge Flashing – Option 02 |
| 14. Window Head (Flush) | 29. Flashing / Termination at Roof |
| 15. Window Head (Recessed) | 30. Kick-Out Flashing |

Notes:

- **The details within are the latest recommendations and are represent in good faith by Sika Corporation US (hereinafter Sika). The details are subject to change without notice. Sika accepts no liability for the end use of the details. For conditions not shown, consult Sika for review of specific details.**
- **Install Sika materials in accordance with current installation instructions.**
- **Unsatisfactory conditions shall be reported to the General Contractor and corrected before the application of Sika products.**

Platinum CI Stucco Ultra

TYPICAL FASTENING PATTERN



PCISU-01 2404

(*NOTE: BY OTHERS)

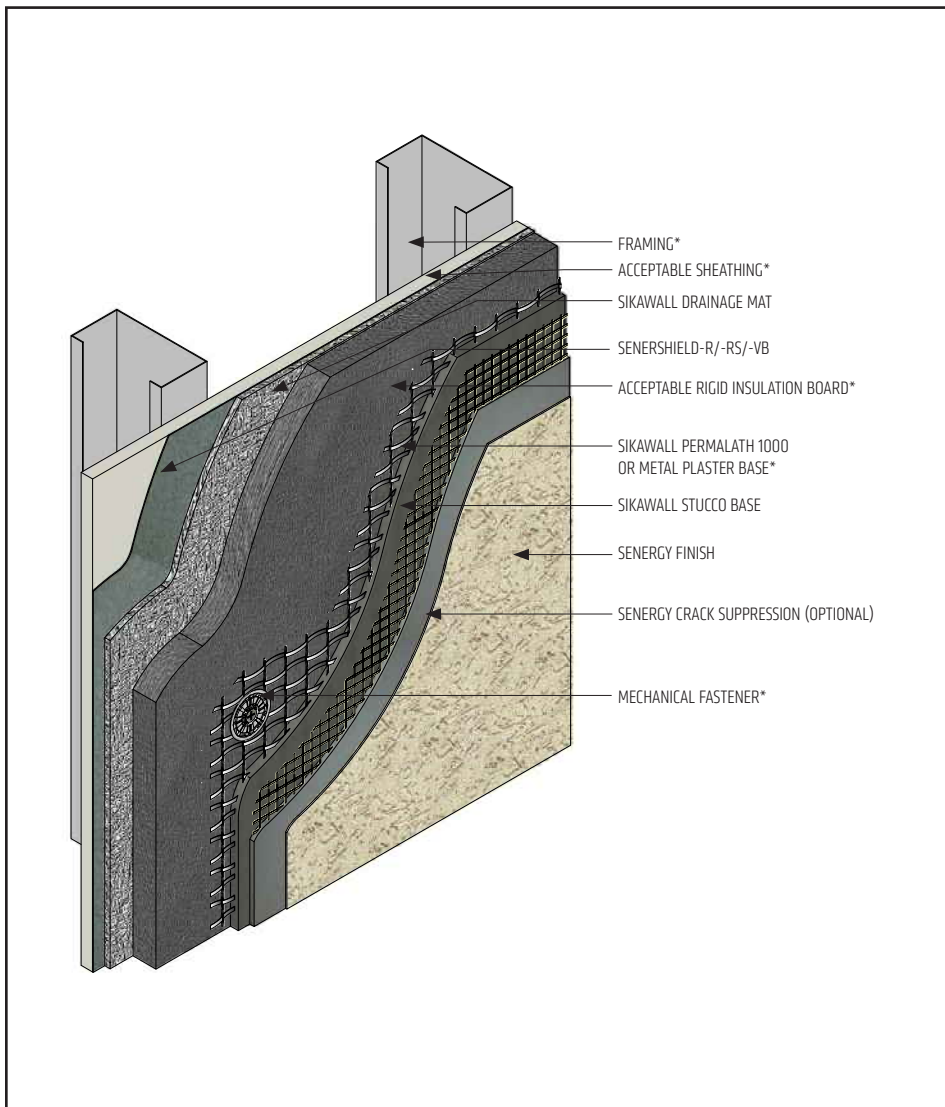
- **Sheathing:**
Fasten per sheathing manufacturer's recommendations or project design requirements.
- **SikaWall Drainage Mat:**
Use sufficient fasteners to hold in place until application of Rigid Insulation Board.
- **Rigid Insulation Board:**
Secure with 2 to 3 fasteners per board to hold in place until lath is installed.
- **Lath – SikaWall PermaLath 1000:**
Use appropriate fasteners spaced not more than 6" (152 mm) o.c. vertically, 16" (406 mm) o.c. horizontally; metal or wire lath: use appropriate fasteners spaced not more than 7" (178 mm) o.c. vertically, 16" (406 mm) or 24" (610 mm) o.c. horizontally, per requirements of ASTM C1063. Refer to Senergy Platinum CI Stucco Ultra specifications.

The details within are latest recommendations and are represent in good faith by Sika Corporation US (hereinafter Sika). The details are subject to change without notice. Sika accepts no liability for the end use of the details. For conditions not shown, consult Sika for review of specific details.

- Install Sika materials in accordance with current installation instructions.
- Unsatisfactory conditions shall be reported to the General Contractor and corrected before the application of Sika products.

Platinum CI Stucco Ultra

TYPICAL FRAMED/SHEATHED CONSTRUCTION



- Ensure Senershield-R/-RS/-VB is dry prior to SikaWall Drainage Mat installation.
- Basic requirements for Plaster Base:
 - SikaWall Stucco Base 3/8" to 1/2" thickness: Min. 1" 20 ga. wire, min. 2.5 lb/sq.yd. metal lath or acceptable alternative.
 - SikaWall Stucco Base equal to or greater than 1/2" thickness: SikaWall PermaLath 1000 or min. 1-1/2" 17 ga. wire, min. 2.5 lb/sq.yd. metal lath or acceptable alternative.
- Senergy Crack Suppression: Flexguard 4 or SikaWall SRT Mesh embedded in Senergy Base Coat or SikaWall Stucco Surface Leveler.

PCISU-02 2404

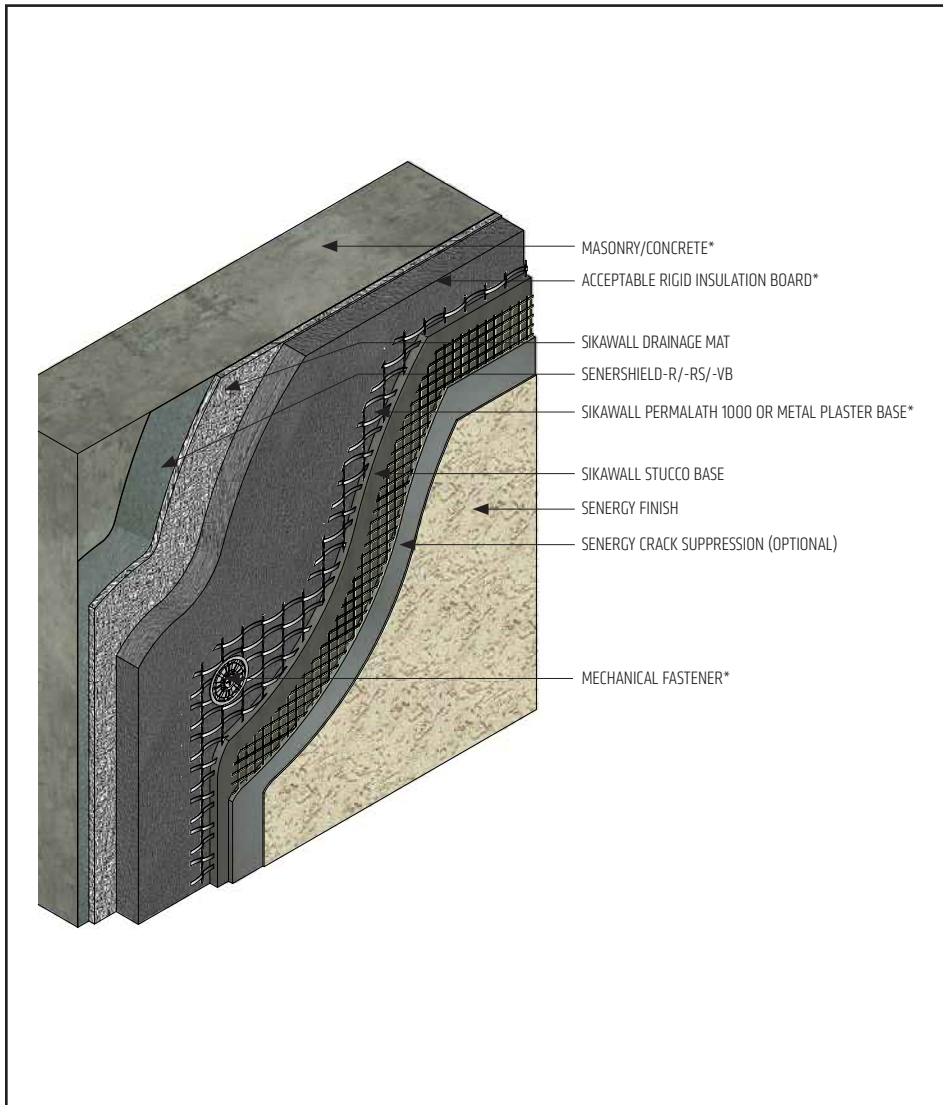
(*NOTE: BY OTHERS)

The details within are latest recommendations and are represent in good faith by Sika Corporation US (hereinafter Sika). The details are subject to change without notice. Sika accepts no liability for the end use of the details. For conditions not shown, consult Sika for review of specific details.

- Install Sika materials in accordance with current installation instructions.
- Unsatisfactory conditions shall be reported to the General Contractor and corrected before the application of Sika products.

Platinum CI Stucco Ultra

TYPICAL MASONRY/CONCRETE CONSTRUCTION



- Multiple coats of Senersshield-R/-RS/-VB may be required to achieve a pin-hole free application.
- Ensure Senersshield-R/-RS/-VB is dry prior to SikaWall Drainage Mat installation.
- Basic requirements for Plaster Base:
 - SikaWall Stucco Base 3/8" to 1/2" thickness: Min. 1" 20 ga. wire, min. 2.5 lb/sq.yd. metal lath or acceptable alternative.
 - SikaWall Stucco Base equal to or greater than 1/2" thickness: SikaWall PermaLath 1000 or min. 1-1/2" 17 ga. wire, min. 2.5 lb/sq.yd. metal lath or acceptable alternative.
- Senergy Crack Suppression: Flexguard 4 or SikaWall SRT Mesh embedded in Senergy Base Coat or SikaWall Stucco Surface Leveler.

PCISU-03 2404

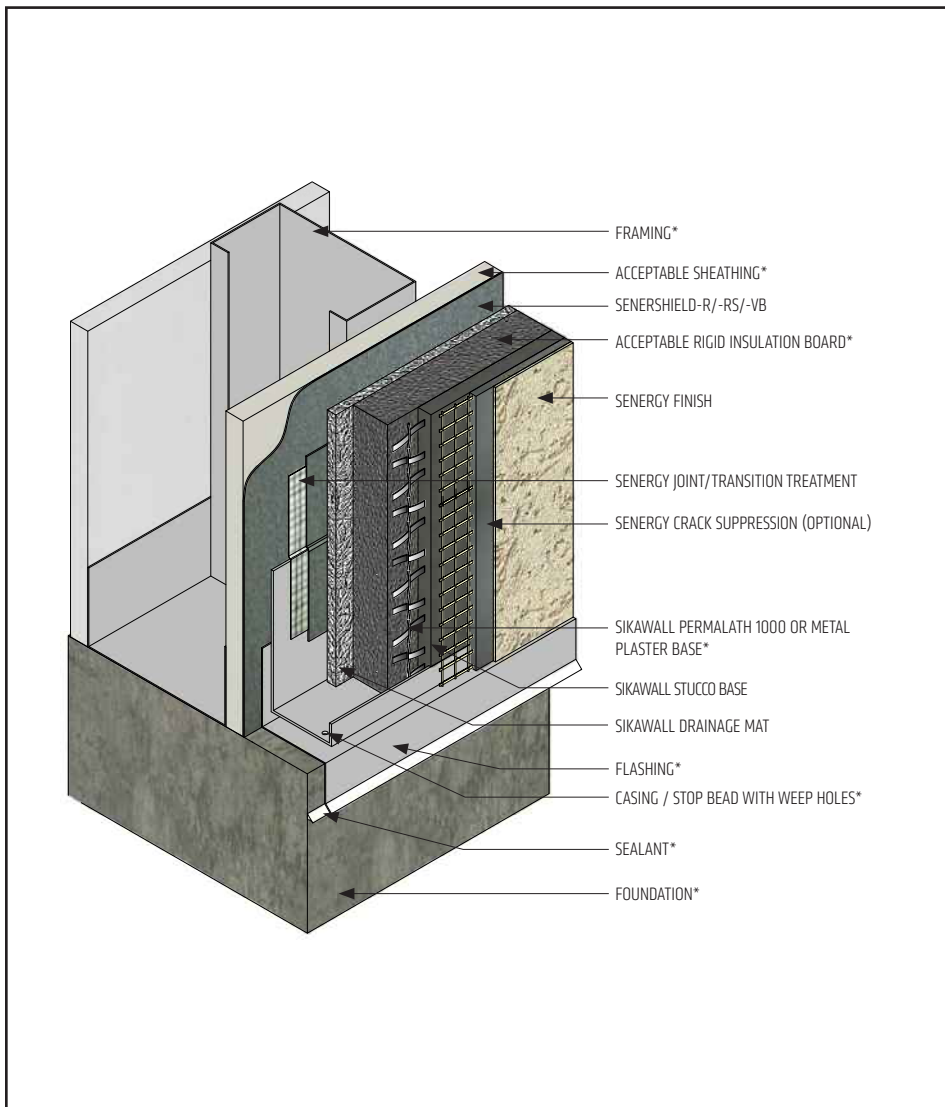
(*NOTE: BY OTHERS)

The details within are latest recommendations and are represent in good faith by Sika Corporation US (hereinafter Sika). The details are subject to change without notice. Sika accepts no liability for the end use of the details. For conditions not shown, consult Sika for review of specific details.

- Install Sika materials in accordance with current installation instructions.
- Unsatisfactory conditions shall be reported to the General Contractor and corrected before the application of Sika products.

Platinum CI Stucco Ultra

TYPICAL TERMINATION AT FOUNDATION – FLUSH WITH CASING / STOP BEAD



- Terminate the Platinum CI Stucco Ultra system a minimum of 6" (152 mm) above raw earth and 2" (50 mm) above paved surface.
- Use Senergy Transition Treatment in Senershield-R/-RS/-VB where it laps over the casing/stop bead flange.
- Ensure casing/stop bead includes weep holes to facilitate drainage.
- Senergy Joint/Transition Treatment Options: SikaWall MaxFlash, SikaWall Sheathing Fabric embedded in Senershield-R/-RS/-VB or SikaWall Flash Seal NP.
- Senergy Crack Suppression: Flexguard 4 or SikaWall SRT Mesh embedded in Senergy Base Coat or SikaWall Stucco Surface Leveler.

PCISU-04 2404

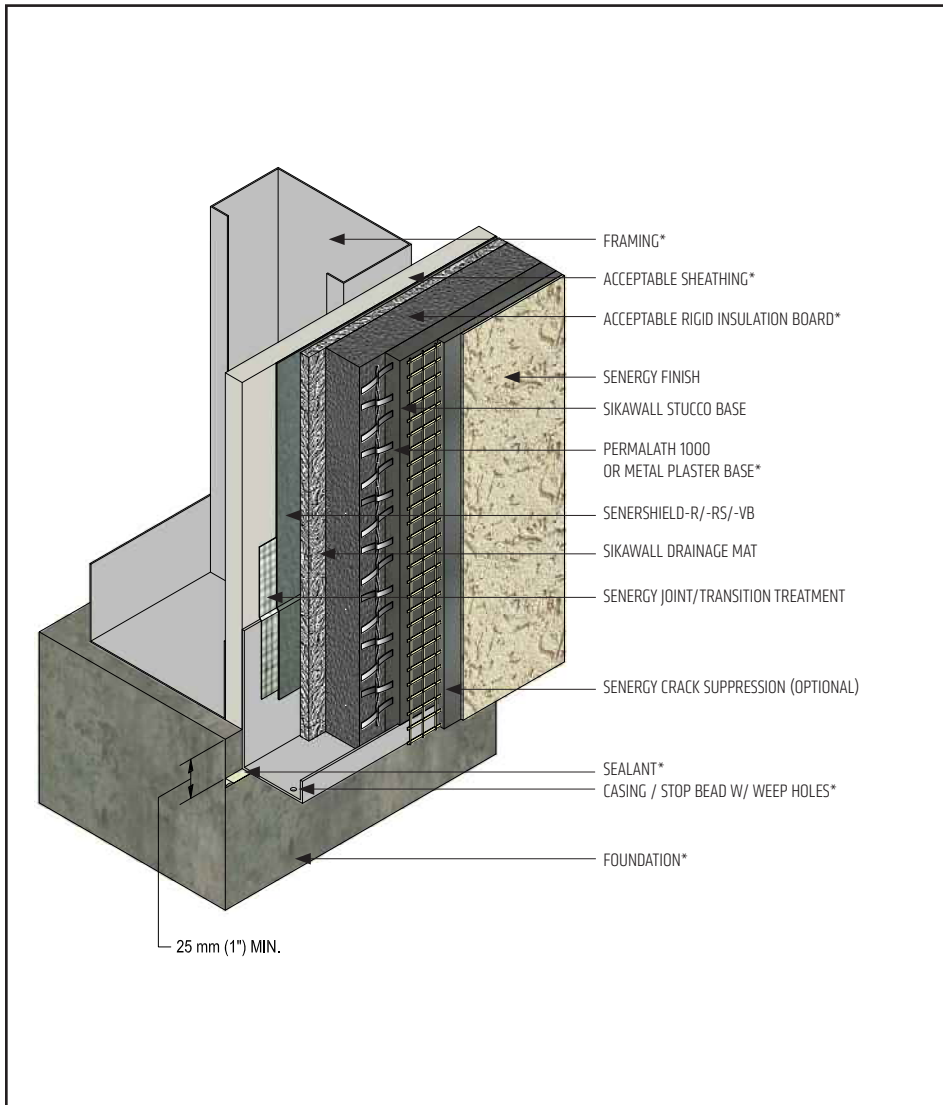
(*NOTE: BY OTHERS)

The details within are latest recommendations and are represent in good faith by Sika Corporation US (hereinafter Sika). The details are subject to change without notice. Sika accepts no liability for the end use of the details. For conditions not shown, consult Sika for review of specific details.

- Install Sika materials in accordance with current installation instructions.
- Unsatisfactory conditions shall be reported to the General Contractor and corrected before the application of Sika products.

Platinum CI Stucco Ultra

TYPICAL TERMINATION AT FOUNDATION WITH CASING / STOP BEAD



- Terminate the Platinum CI Stucco Ultra system a minimum of 6" (152 mm) above raw earth and 2" (50 mm) above paved surface.
- Provide minimum 1" (25 mm) overlap at framing/foundation transition.
- Use Senergy Transition Treatment where it laps over the casing/stop bead flange.
- Ensure casing/stop bead includes weep holes to facilitate drainage.
- Senergy Joint/Transition Treatment Options: SikaWall MaxFlash, SikaWall Sheathing Fabric embedded in Senershield-R/-RS/-VB or SikaWall Flash Seal NP.
- Senergy Crack Suppression: Flexguard 4 or SikaWall SRT Mesh embedded in Senergy Base Coat or SikaWall Stucco Surface Leveler.

PCISU-05 2404

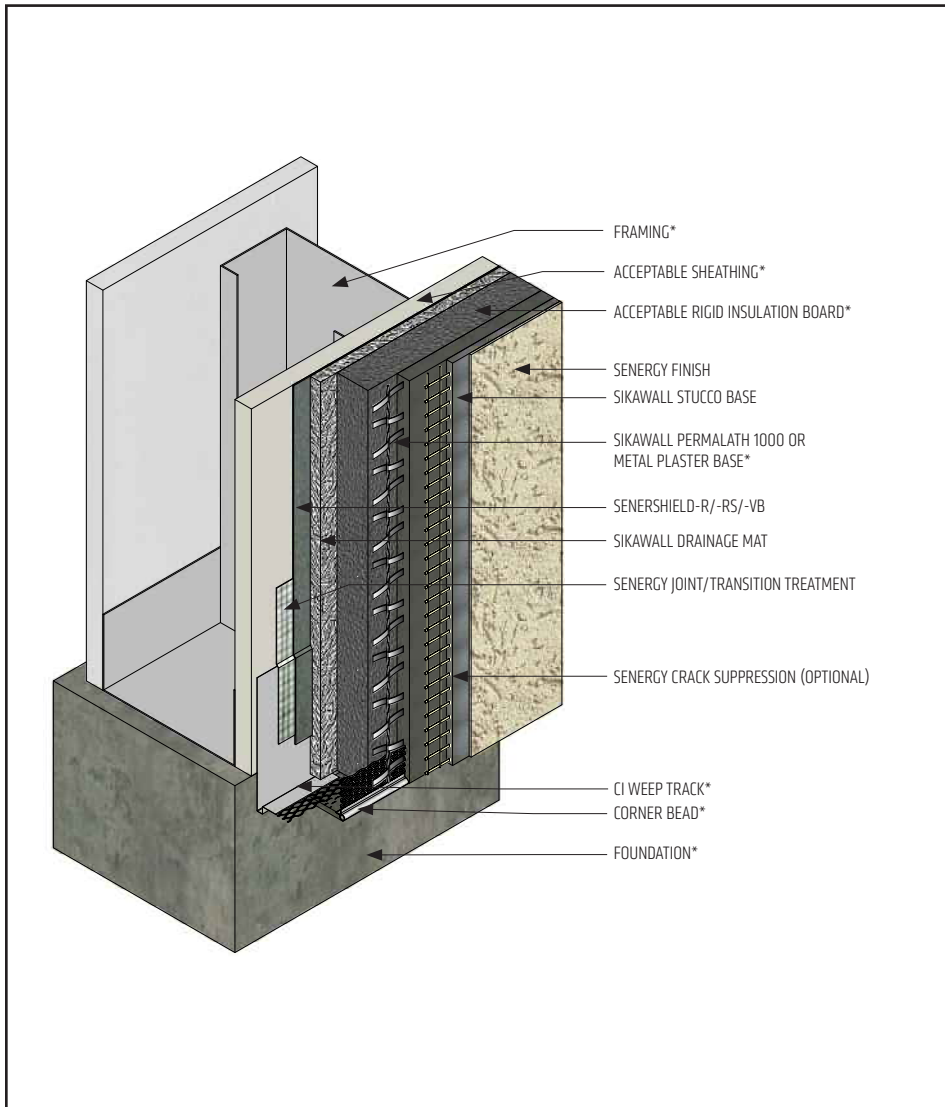
(*NOTE: BY OTHERS)

The details within are latest recommendations and are represent in good faith by Sika Corporation US (hereinafter Sika). The details are subject to change without notice. Sika accepts no liability for the end use of the details. For conditions not shown, consult Sika for review of specific details.

- Install Sika materials in accordance with current installation instructions.
- Unsatisfactory conditions shall be reported to the General Contractor and corrected before the application of Sika products.

Platinum CI Stucco Ultra

TYPICAL TERMINATION AT FOUNDATION WITH CI WEEP TRACK



- Terminate the Platinum CI Stucco Ultra system a minimum of 6" (152 mm) above raw earth and 2" (50 mm) above paved surface.
- Provide minimum 1" (25 mm) overlap at framing/foundation transition.
- Use Senergy Transition Treatment to lap over the CI Weep Track flange.
- Senergy Joint/Transition Treatment Options: SikaWall MaxFlash, SikaWall Sheathing Fabric embedded in Senershield-R/-RS/-VB or SikaWall Flash Seal NP.
- Senergy Crack Suppression: Flexguard 4 or SikaWall SRT Mesh embedded in Senergy Base Coat or SikaWall Stucco Surface Leveler.

PCISU-06 2404

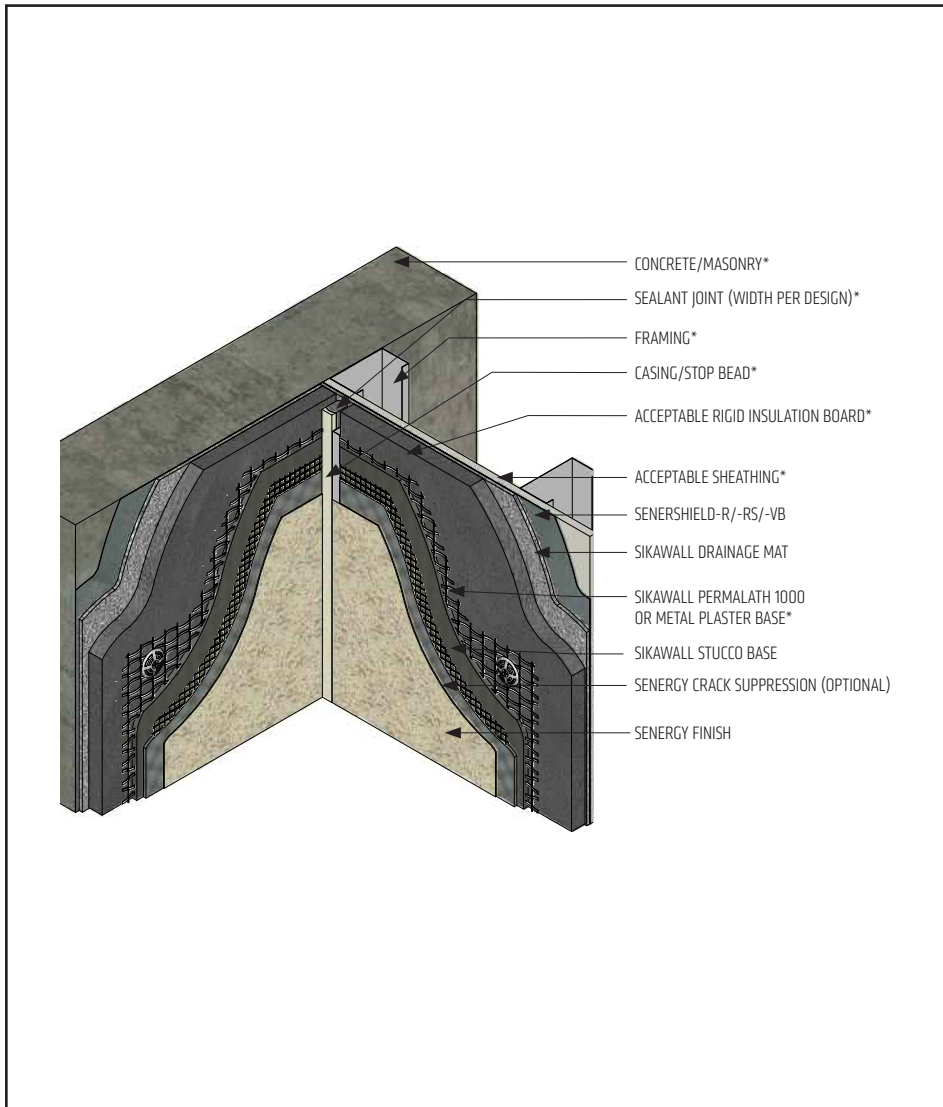
(*NOTE: BY OTHERS)

The details within are latest recommendations and are represent in good faith by Sika Corporation US (hereinafter Sika). The details are subject to change without notice. Sika accepts no liability for the end use of the details. For conditions not shown, consult Sika for review of specific details.

- Install Sika materials in accordance with current installation instructions.
- Unsatisfactory conditions shall be reported to the General Contractor and corrected before the application of Sika products.

Platinum CI Stucco Ultra

TYPICAL CHANGE IN SUBSTRATE



- Ensure Senershield-R/-RS/-VB application is continuous behind the Platinum CI Stucco Ultra system at change in substrate – apply SikaWall Flash Seal NP at change in substrate followed by fully coating SikaWall Flash Seal NP with Senershield-R/-RS/-VB.
- Do not apply finish into joint to receive sealant.
- Senergy Crack Suppression: Flexguard 4 or SikaWall SRT Mesh embedded in Senergy Base Coat or SikaWall Stucco Surface Leveler.

PCISU-07 2404

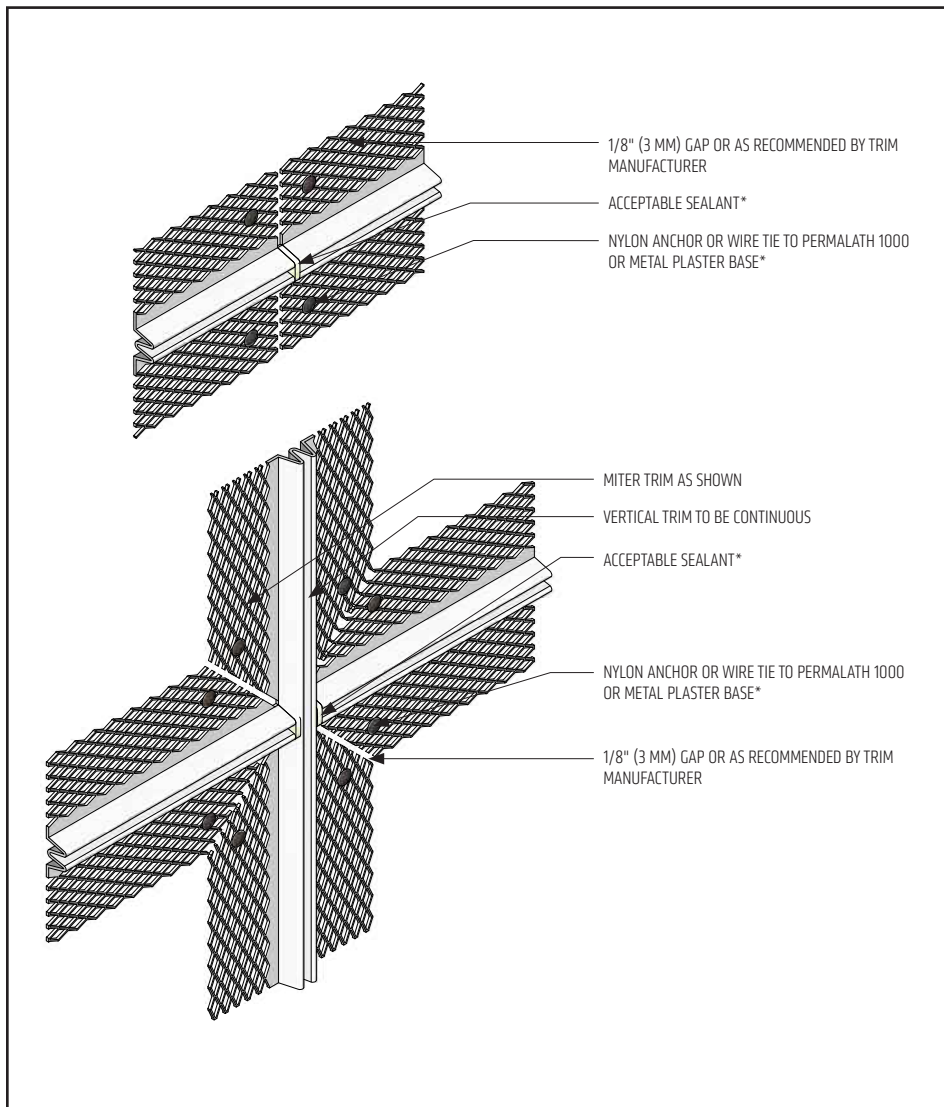
(*NOTE: BY OTHERS)

The details within are latest recommendations and are represent in good faith by Sika Corporation US (hereinafter Sika). The details are subject to change without notice. Sika accepts no liability for the end use of the details. For conditions not shown, consult Sika for review of specific details.

- Install Sika materials in accordance with current installation instructions.
- Unsatisfactory conditions shall be reported to the General Contractor and corrected before the application of Sika products.

Platinum CI Stucco Ultra

TYPICAL TRIM JUNCTION



- At trim intersection, it is recommended that the vertical trim be continuous.

PCISU-08 2404

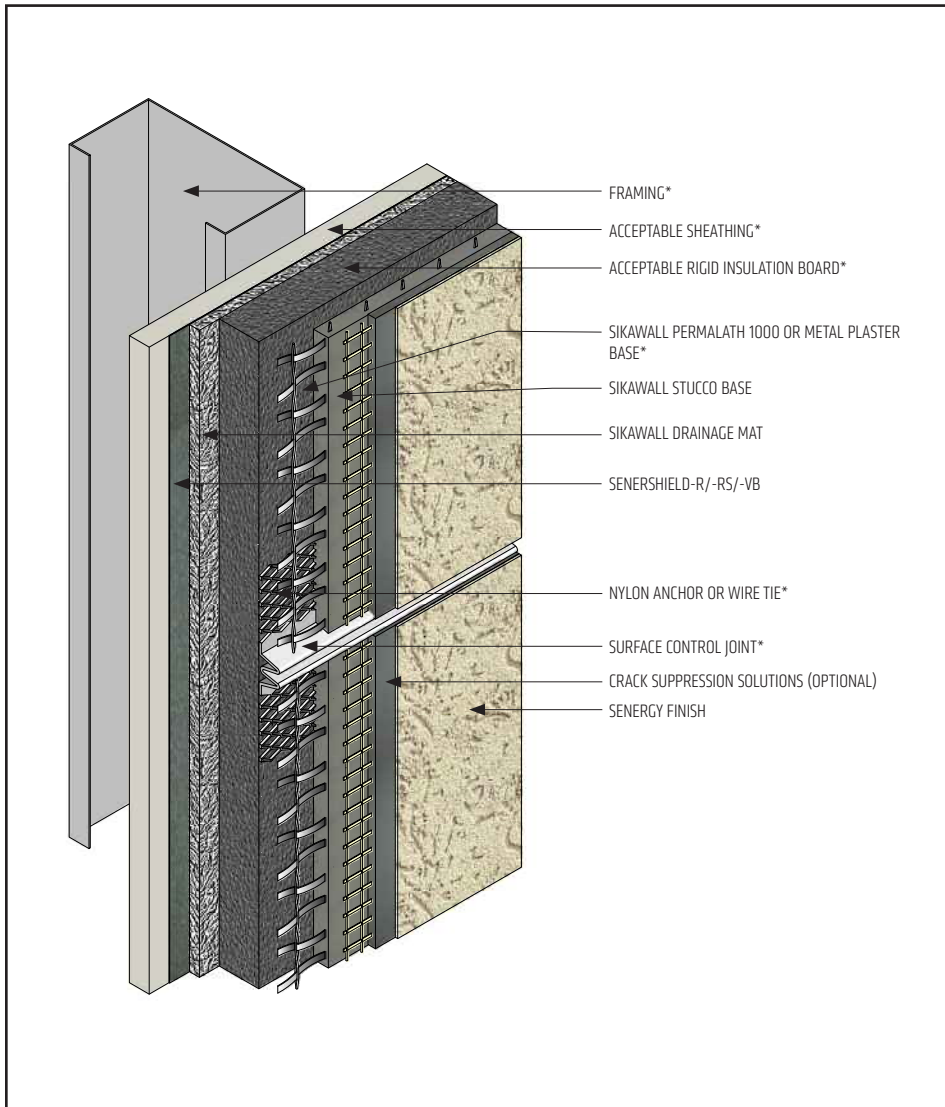
(*NOTE: BY OTHERS)

The details within are latest recommendations and are represent in good faith by Sika Corporation US (hereinafter Sika). The details are subject to change without notice. Sika accepts no liability for the end use of the details. For conditions not shown, consult Sika for review of specific details.

- Install Sika materials in accordance with current installation instructions.
- Unsatisfactory conditions shall be reported to the General Contractor and corrected before the application of Sika products.

Platinum CI Stucco Ultra

TYPICAL SURFACE CONTROL JOINT



- Provide control joints every 144 ft² (13 m²) and placement as determined by the design professional. Maximum recommended uncontrolled length or width is 18 ft (5.5 m) and a maximum uncontrolled length to width ratio of 2-1/2 to 1.
- Lath must be broken at the control joint accessory.
- Senergy Crack Suppression: Flexguard 4 or SikaWall SRT Mesh embedded in Senergy Base Coat or SikaWall Stucco Surface Leveler.
- Senergy Joint/Transition Treatment Options: SikaWall MaxFlash, SikaWall Sheathing Fabric embedded in Senersshield-R/-RS/-VB or SikaWall Flash Seal NP.

PCISU-09 2404

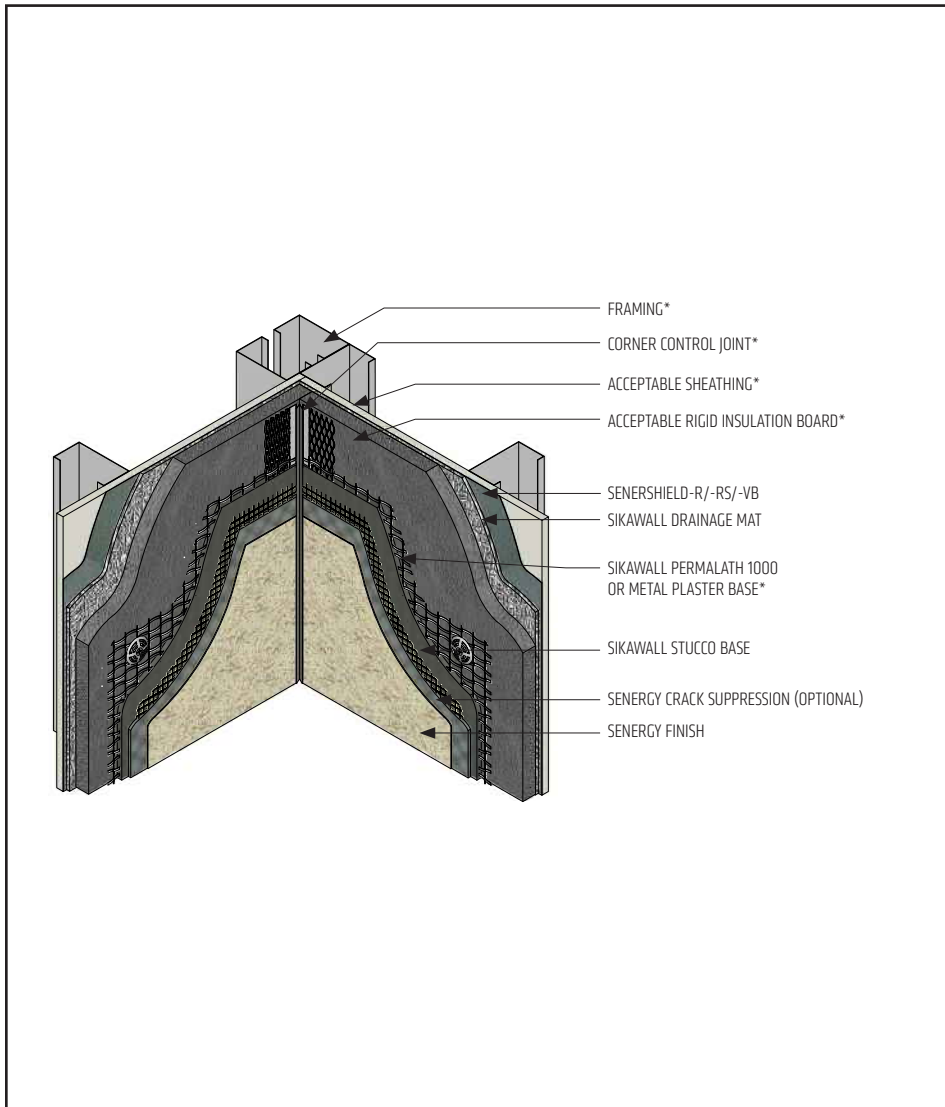
(*NOTE: BY OTHERS)

The details within are latest recommendations and are represent in good faith by Sika Corporation US (hereinafter Sika). The details are subject to change without notice. Sika accepts no liability for the end use of the details. For conditions not shown, consult Sika for review of specific details.

- Install Sika materials in accordance with current installation instructions.
- Unsatisfactory conditions shall be reported to the General Contractor and corrected before the application of Sika products.

Platinum CI Stucco Ultra

TYPICAL INSIDE CORNER CONTROL JOINT-FRAMED / SHEATHED CONSTRUCTION



- Ensure Senersshield-R/-RS/-VB application is continuous behind the Platinum CI Stucco Ultra system – apply Senergy Transition Treatment at inside corner.
- Senergy Crack Suppression: Flexguard 4 or SikaWall SRT Mesh embedded in Senergy Base Coat or SikaWall Stucco Surface Leveler.
- Senergy Joint/Transition Treatment Options: SikaWall MaxFlash, SikaWall Sheathing Fabric embedded in Senersshield-R/-RS/-VB or SikaWall Flash Seal NP.

PCISU-10 2404

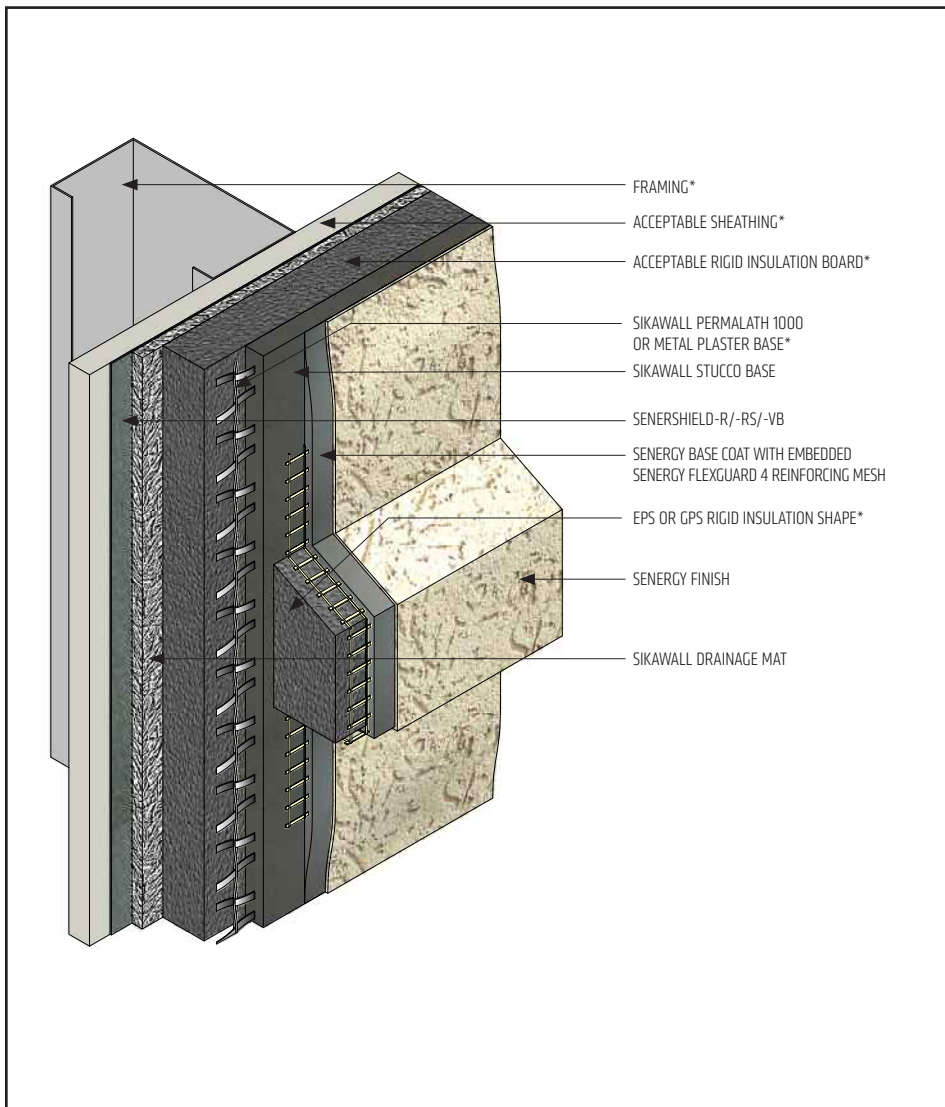
(*NOTE: BY OTHERS)

The details within are latest recommendations and are represent in good faith by Sika Corporation US (hereinafter Sika). The details are subject to change without notice. Sika accepts no liability for the end use of the details. For conditions not shown, consult Sika for review of specific details.

- Install Sika materials in accordance with current installation instructions.
- Unsatisfactory conditions shall be reported to the General Contractor and corrected before the application of Sika products.

Platinum CI Stucco Ultra

TYPICAL EPS SHAPE APPLICATION



- Extend Senergy Flexguard 4 Reinforcing Mesh and Base Coat from band or shape onto SIKAWALL STUCCO BASE a minimum of 3" (76 mm).
- Provide a 6:12 slope on horizontal applications greater than 1".
- Adhere EPS or GPS Rigid Insulation band/ shape with Senergy Base Coat to SikaWall Stucco Base surface.

PCISU-11 2404

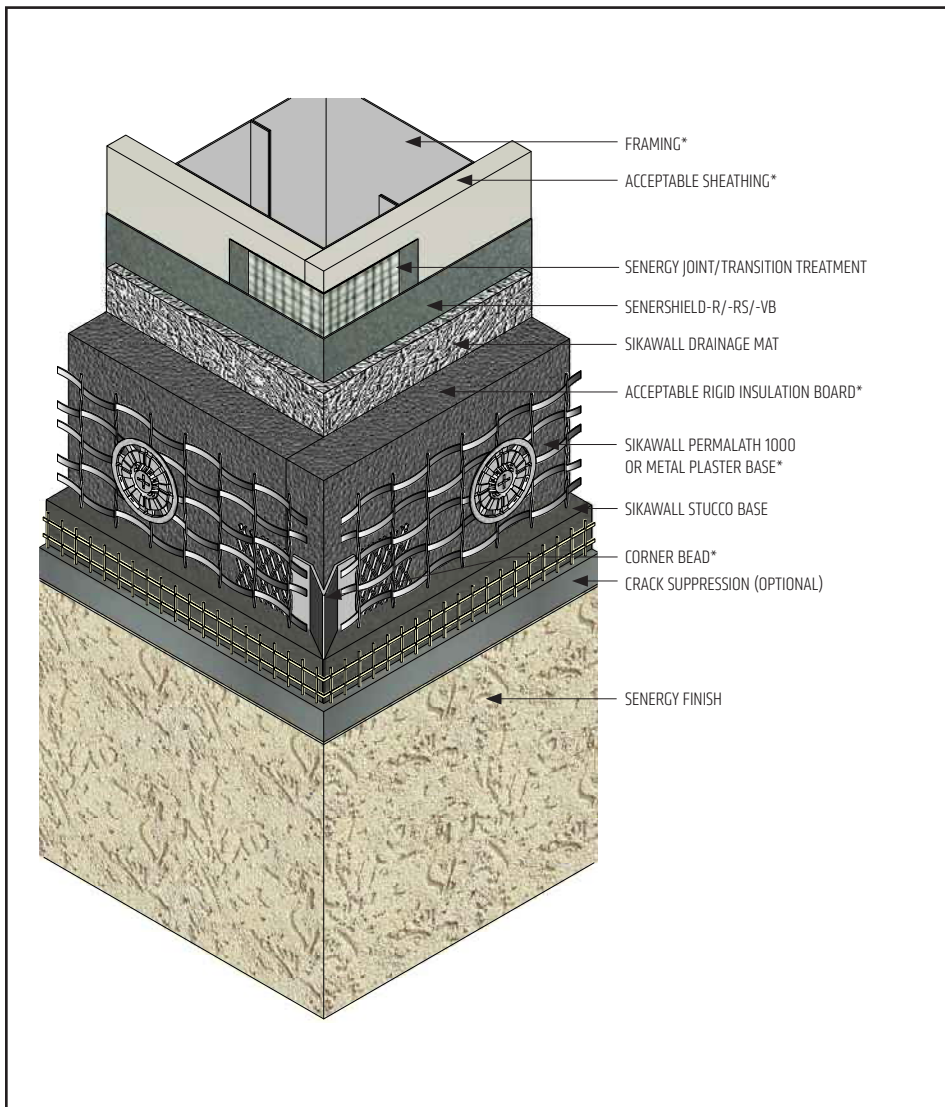
(*NOTE: BY OTHERS)

The details within are latest recommendations and are represent in good faith by Sika Corporation US (hereinafter Sika). The details are subject to change without notice. Sika accepts no liability for the end use of the details. For conditions not shown, consult Sika for review of specific details.

- Install Sika materials in accordance with current installation instructions.
- Unsatisfactory conditions shall be reported to the General Contractor and corrected before the application of Sika products.

Platinum CI Stucco Ultra

TYPICAL CORNER BEAD



- Attach corner bead with wire ties, anchors or fasteners to resist movement during application of SikaWall Stucco Base.
- Fill corner bead solid with SikaWall Stucco Base.
- Senergy Joint/Transition Treatment Options: SikaWall MaxFlash, SikaWall Sheathing Fabric embedded in Senershield-R/-RS/-VB or SikaWall Flash Seal NP.
- Senergy Crack Suppression: Flexguard 4 or SikaWall SRT Mesh embedded in Senergy Base Coat or SikaWall Stucco Surface Leveler.

PCISU-12 2404

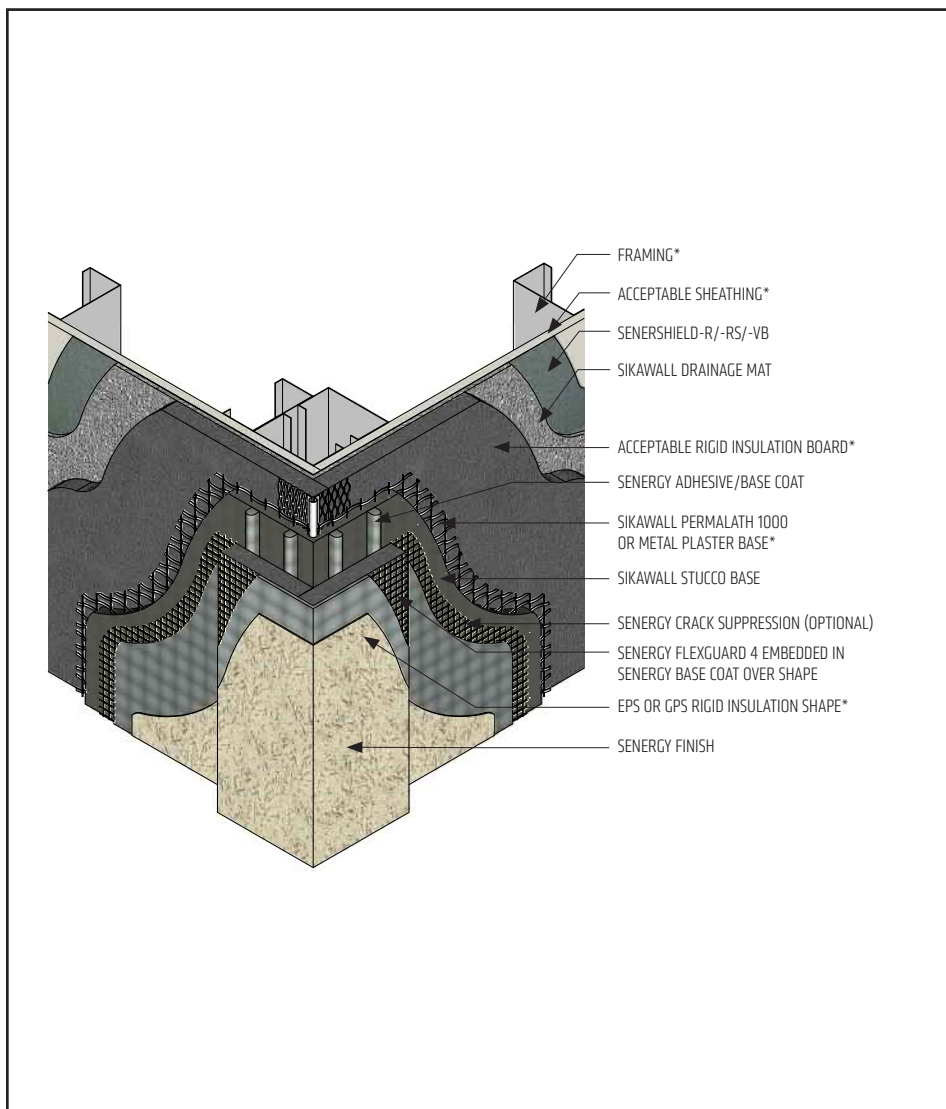
(*NOTE: BY OTHERS)

The details within are latest recommendations and are represent in good faith by Sika Corporation US (hereinafter Sika). The details are subject to change without notice. Sika accepts no liability for the end use of the details. For conditions not shown, consult Sika for review of specific details.

- Install Sika materials in accordance with current installation instructions.
- Unsatisfactory conditions shall be reported to the General Contractor and corrected before the application of Sika products.

Platinum CI Stucco Ultra

TYPICAL DECORATIVE SHAPE



- Extend Senergy Reinforcing Mesh and Base Coat from band or shape onto SikaWall Stucco Base a minimum of 3" (76 mm).
- Adhere EPS or GPS Rigid Insulation band/ shape with Senergy Base Coat to SikaWall Stucco Base surface.
- Senergy Crack Suppression: Flexguard 4 or SikaWall SRT Mesh embedded in Senergy Base Coat or SikaWall Stucco Surface Leveler.

PCISU-13 2404

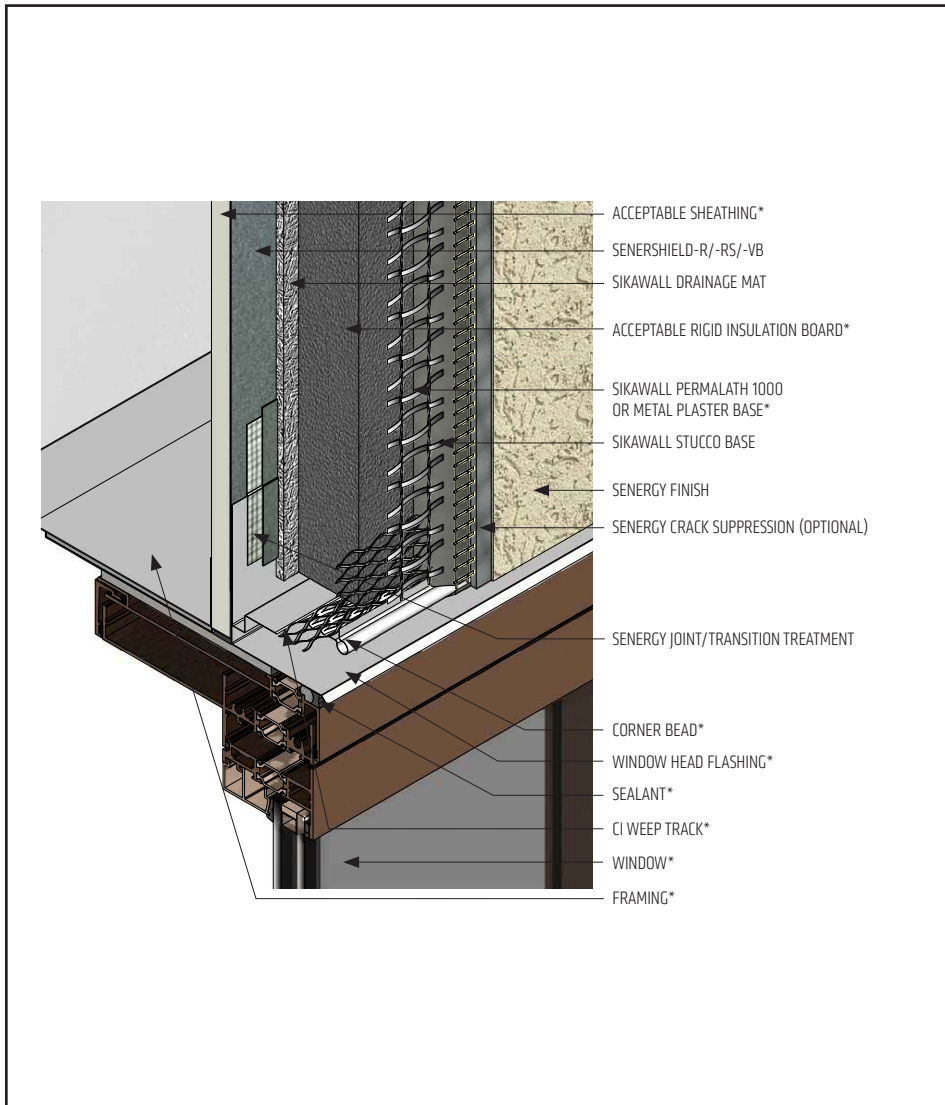
(*NOTE: BY OTHERS)

The details within are latest recommendations and are represent in good faith by Sika Corporation US (hereinafter Sika). The details are subject to change without notice. Sika accepts no liability for the end use of the details. For conditions not shown, consult Sika for review of specific details.

- Install Sika materials in accordance with current installation instructions.
- Unsatisfactory conditions shall be reported to the General Contractor and corrected before the application of Sika products.

Platinum CI Stucco Ultra

TYPICAL WINDOW HEAD (FLUSH)



- Use Senergy Transition Treatment to lap over the CI Weep Track flange.
- Provide end-dams at flashing terminations.
- Seal flashing drip edge to window frame.
- If Senershield-R/-RS/-VB is also functioning as an air barrier, ensure head of rough opening is wrapped using Senergy Joint/Transition Treatment and Senershield-R/-RS/-VB.
- Senergy Joint/Transition Treatment Options: SikaWall MaxFlash, SikaWall Sheathing Fabric embedded in Senershield-R/-RS/-VB or SikaWall Flash Seal NP.
- Senergy Crack Suppression: Flexguard 4 or SikaWall SRT Mesh embedded in Senergy Base Coat or SikaWall Stucco Surface Leveler.

PCISU-14 2404

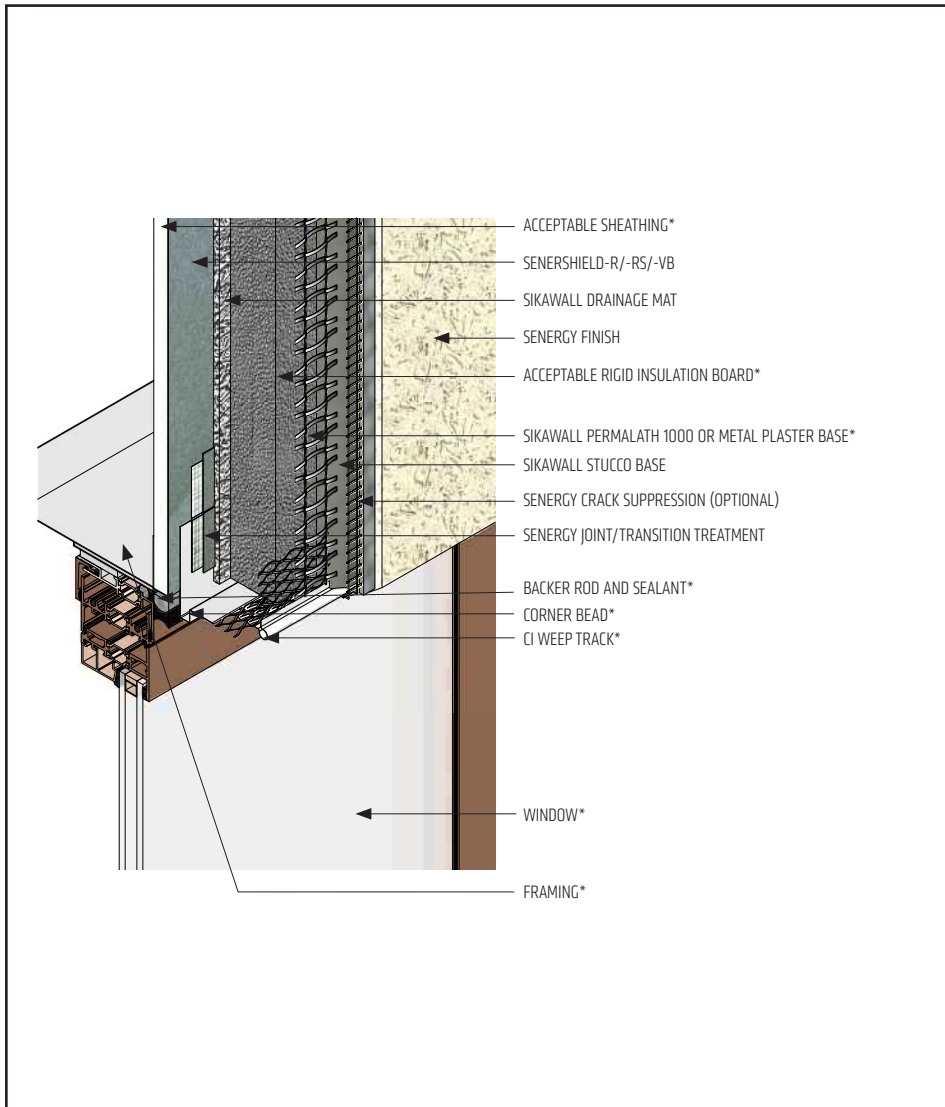
(*NOTE: BY OTHERS)

The details within are latest recommendations and are represent in good faith by Sika Corporation US (hereinafter Sika). The details are subject to change without notice. Sika accepts no liability for the end use of the details. For conditions not shown, consult Sika for review of specific details.

- Install Sika materials in accordance with current installation instructions.
- Unsatisfactory conditions shall be reported to the General Contractor and corrected before the application of Sika products.

Platinum CI Stucco Ultra

TYPICAL WINDOW HEAD (RECESSED)



- Use Senergy Transition Treatment to lap over the CI Weep Track flange.
- If Senershield-R/-RS/-VB is also functioning as an air barrier, ensure head of rough opening is wrapped with Senergy Transition Treatment.
- Senergy Joint/Transition Treatment Options: SikaWall MaxFlash, SikaWall Sheathing Fabric embedded in Senershield-R/-RS/-VB or SikaWall Flash Seal NP.
- Senergy Crack Suppression: Flexguard 4 or SikaWall SRT Mesh embedded in Senergy Base Coat or SikaWall Stucco Surface Leveler.

PCISU-15 2404

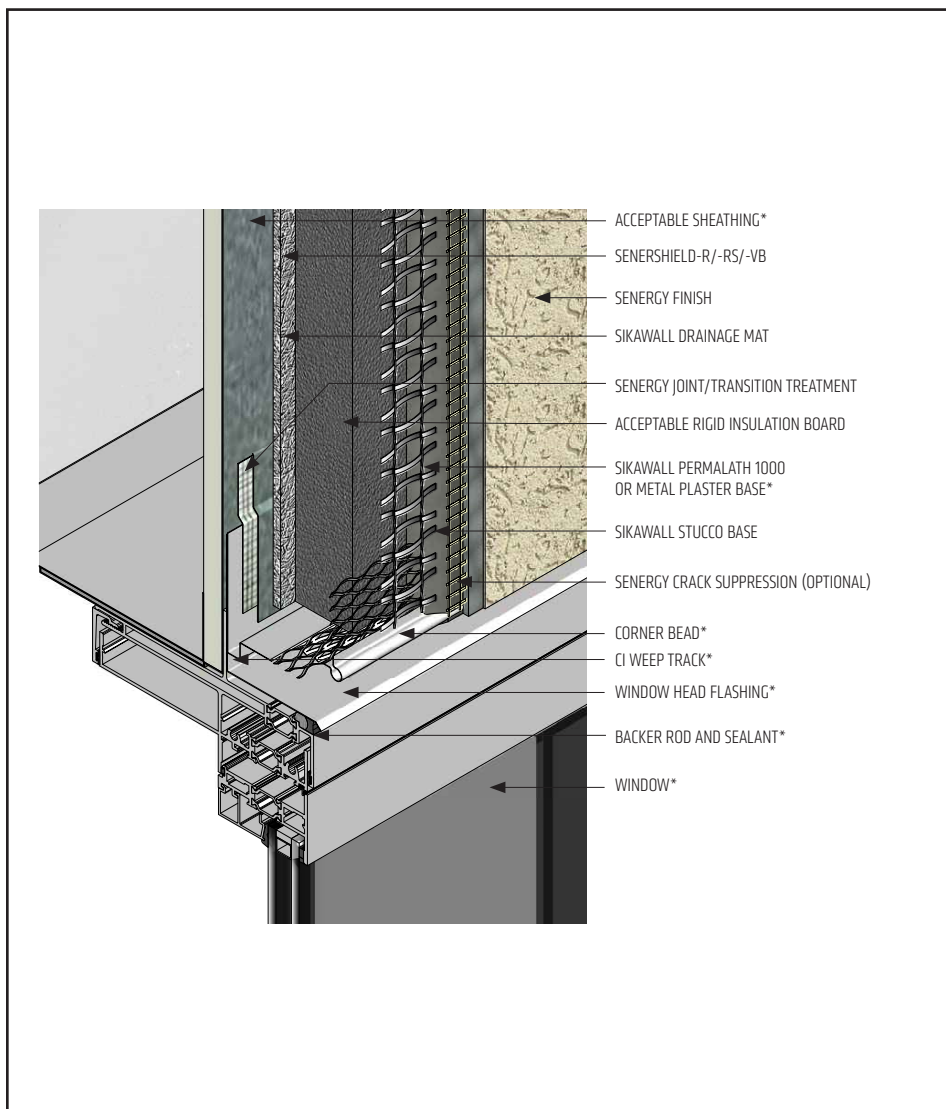
(*NOTE: BY OTHERS)

The details within are latest recommendations and are represent in good faith by Sika Corporation US (hereinafter Sika). The details are subject to change without notice. Sika accepts no liability for the end use of the details. For conditions not shown, consult Sika for review of specific details.

- Install Sika materials in accordance with current installation instructions.
- Unsatisfactory conditions shall be reported to the General Contractor and corrected before the application of Sika products.

Platinum CI Stucco Ultra

TYPICAL FLANGED WINDOW HEAD



- As recommended by window manufacturer, apply sealant to back of window flange at head prior to installation of window.
- Use Senergy Transition Treatment to lap on to the CI Weep Track flange.
- Provide end-dams at flashing terminations.
- Seal flashing drip edge to window frame.
- If Senershield-R/-RS/-VB is also functioning as an air barrier, ensure head of rough opening is wrapped with Senergy Transition Treatment.
- Senergy Joint/Transition Treatment Options: SikaWall MaxFlash, SikaWall Sheathing Fabric embedded in Senershield-R/-RS/-VB or SikaWall Flash Seal NP.
- Senergy Crack Suppression: Flexguard 4 or SikaWall SRT Mesh embedded in Senergy Base Coat or SikaWall Stucco Surface Leveler.

PCISU-16 2404

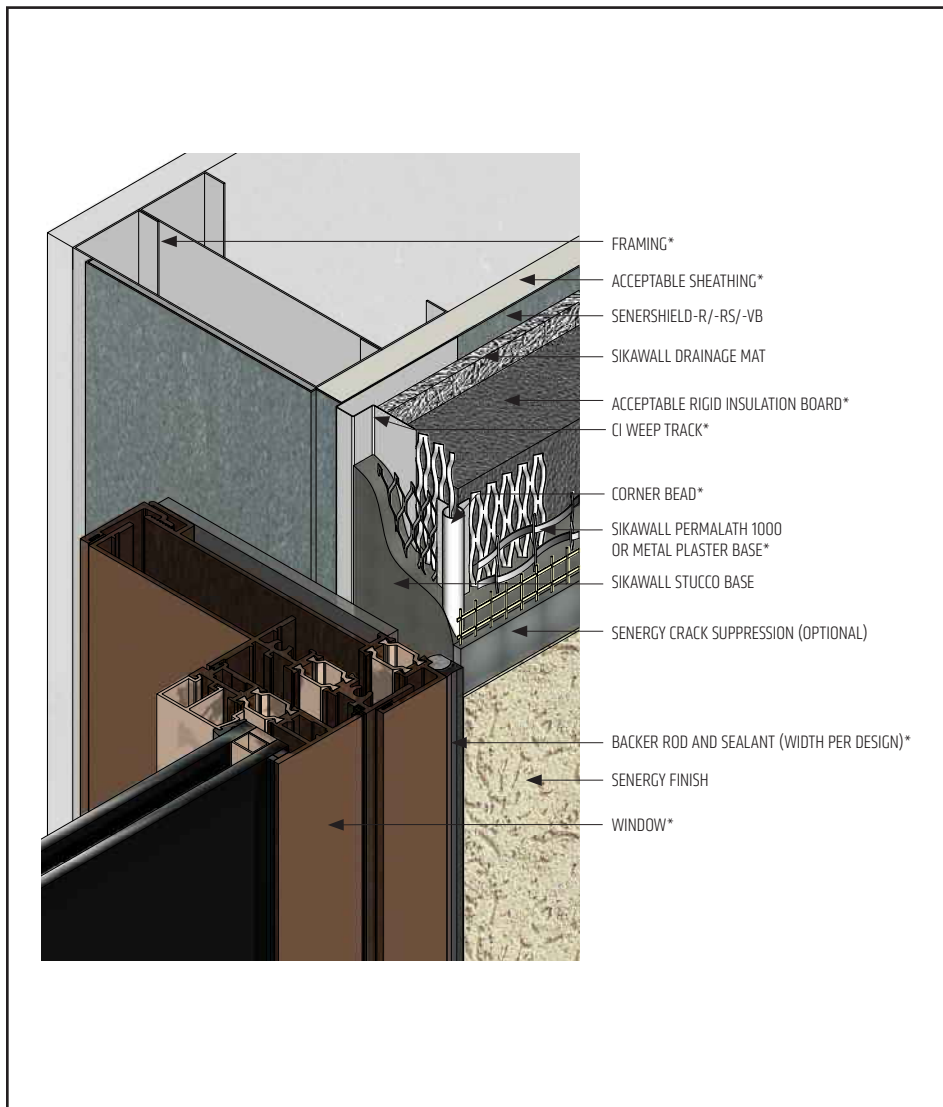
(*NOTE: BY OTHERS)

The details within are latest recommendations and are represent in good faith by Sika Corporation US (hereinafter Sika). The details are subject to change without notice. Sika accepts no liability for the end use of the details. For conditions not shown, consult Sika for review of specific details.

- Install Sika materials in accordance with current installation instructions.
- Unsatisfactory conditions shall be reported to the General Contractor and corrected before the application of Sika products.

Platinum CI Stucco Ultra

TYPICAL WINDOW JAMB (FLUSH)



- Ensure Senergy air/water-resistive barrier is properly applied into rough opening in accordance with application guidelines. Reference Senershield air/water-resistive barrier details.
- Do not apply finish into joint to receive sealant.
- Use non-hole punched version of CI Weep Track on jambs.
- Senergy Joint/Transition Treatment Options: SikaWall MaxFlash, SikaWall Sheathing Fabric embedded in Senershield-R/-RS/-VB or SikaWall Flash Seal NP.
- Senergy Crack Suppression: Flexguard 4 or SikaWall SRT Mesh embedded in Senergy Base Coat or SikaWall Stucco Surface Leveler.

PCISU-17 2404

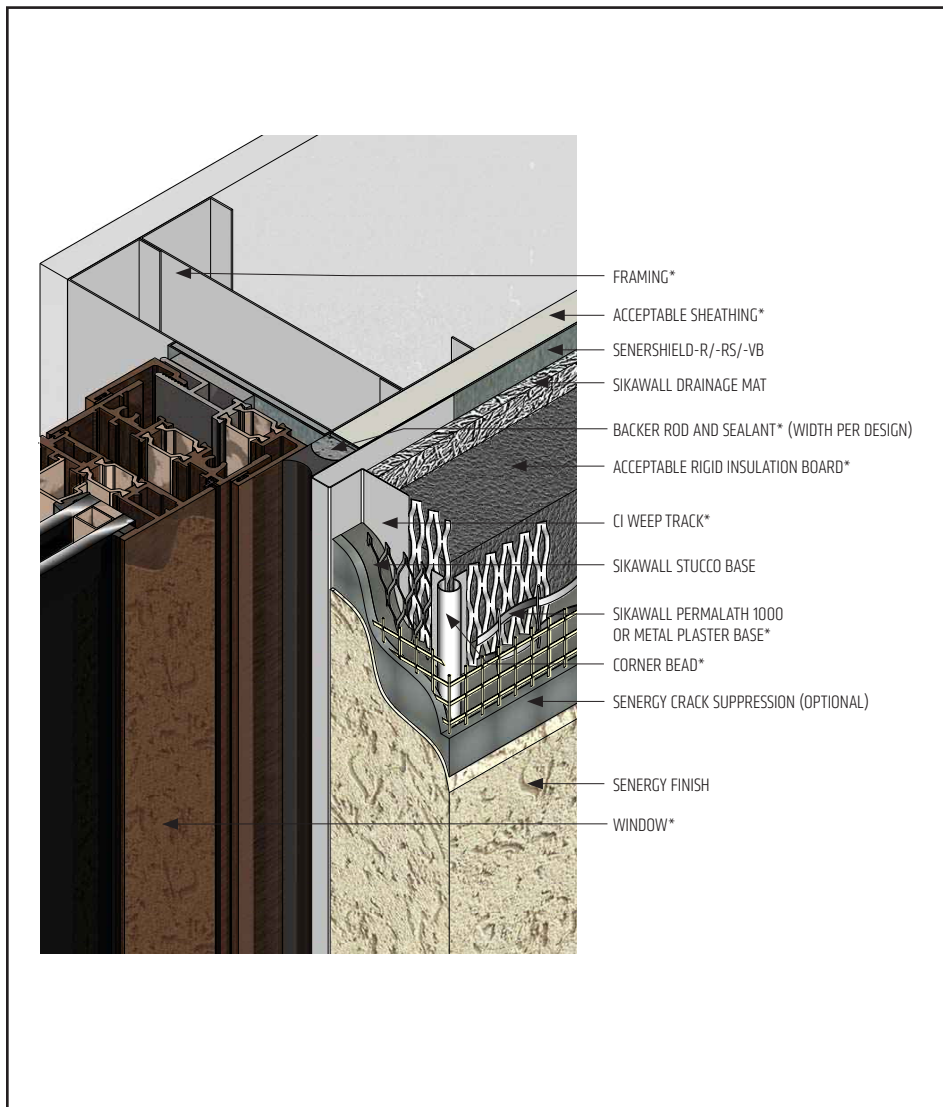
(*NOTE: BY OTHERS)

The details within are latest recommendations and are represent in good faith by Sika Corporation US (hereinafter Sika). The details are subject to change without notice. Sika accepts no liability for the end use of the details. For conditions not shown, consult Sika for review of specific details.

- Install Sika materials in accordance with current installation instructions.
- Unsatisfactory conditions shall be reported to the General Contractor and corrected before the application of Sika products.

Platinum CI Stucco Ultra

TYPICAL WINDOW JAMB (RECESSED)



- Ensure Senergy air/water-resistive barrier is properly applied into rough opening in accordance with application guidelines. Reference Senershield air/water-resistive barrier details.
- Use non-hole punched version of CI Weep Track on jambs.
- Senergy Joint/Transition Treatment Options: SikaWall MaxFlash, SikaWall Sheathing Fabric embedded in Senershield-R/-RS/-VB or SikaWall Flash Seal NP.
- Senergy Crack Suppression: Flexguard 4 or SikaWall SRT Mesh embedded in Senergy Base Coat or SikaWall Stucco Surface Leveler.

PCISU-18 2404

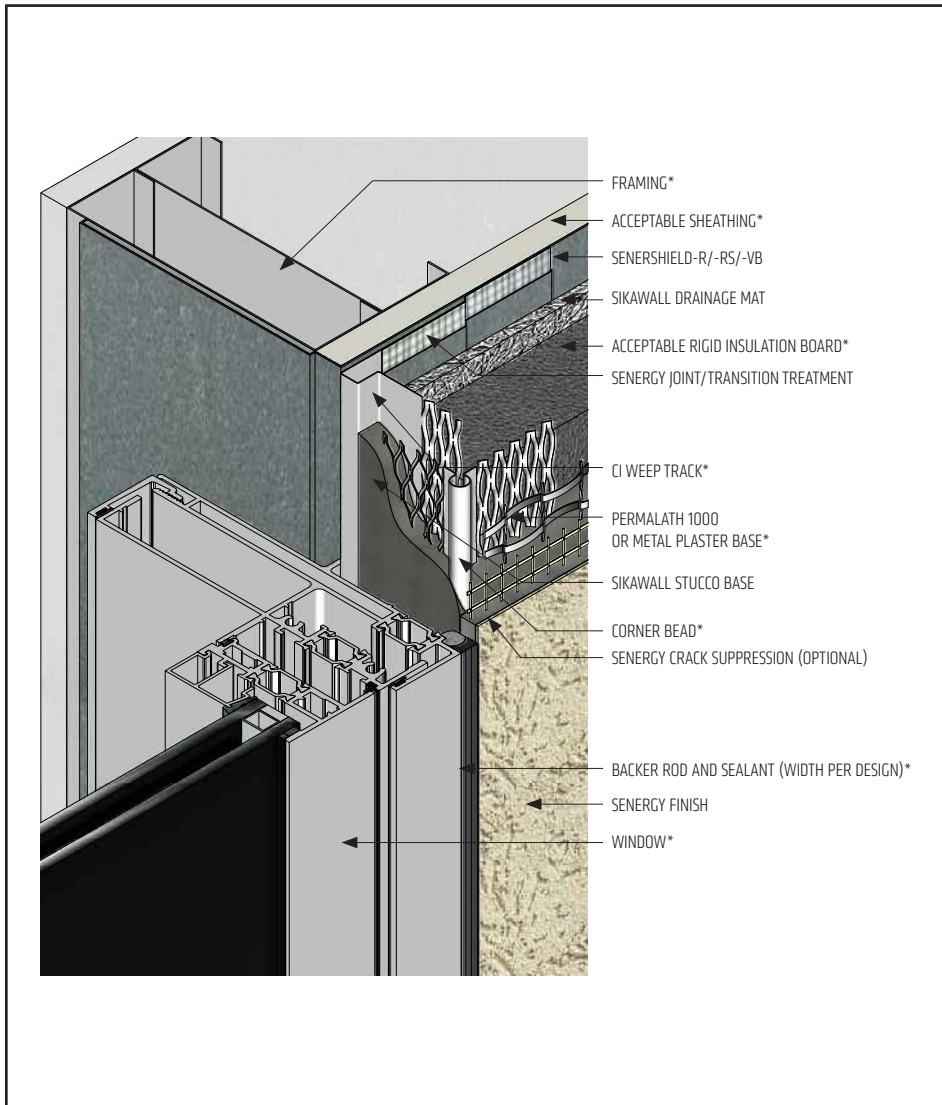
(*NOTE: BY OTHERS)

The details within are latest recommendations and are represent in good faith by Sika Corporation US (hereinafter Sika). The details are subject to change without notice. Sika accepts no liability for the end use of the details. For conditions not shown, consult Sika for review of specific details.

- Install Sika materials in accordance with current installation instructions.
- Unsatisfactory conditions shall be reported to the General Contractor and corrected before the application of Sika products.

Platinum CI Stucco Ultra

TYPICAL FLANGED WINDOW JAMB



- Ensure Senergy air/water-resistive barrier is properly applied into rough opening in accordance with application guidelines. Reference Senershield air/water-resistive barrier details.
- As recommended by window manufacturer, apply sealant to back of window flange at jamb prior to installation of window.
- Use non-hole punched version of CI Weep Track on jambs.
- Use Senergy Transition Treatment to lap over CI Weep Track flange.
- Senergy Joint/Transition Treatment Options: SikaWall MaxFlash, SikaWall Sheathing Fabric embedded in Senershield-R/-RS/-VB or SikaWall Flash Seal NP.
- Senergy Crack Suppression: Flexguard 4 or SikaWall SRT Mesh embedded in Senergy Base Coat or SikaWall Stucco Surface Leveler.

PCISU-19 2404

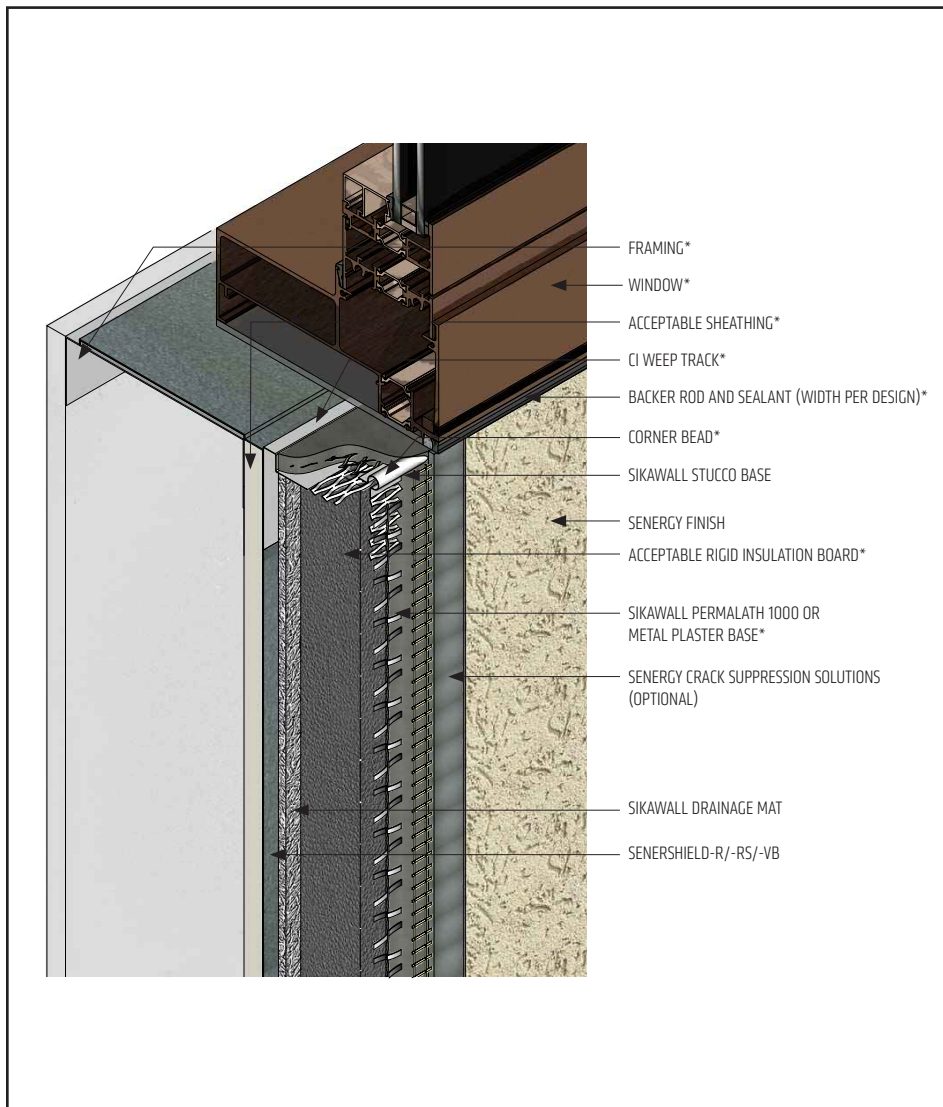
(*NOTE: BY OTHERS)

The details within are latest recommendations and are represent in good faith by Sika Corporation US (hereinafter Sika). The details are subject to change without notice. Sika accepts no liability for the end use of the details. For conditions not shown, consult Sika for review of specific details.

- Install Sika materials in accordance with current installation instructions.
- Unsatisfactory conditions shall be reported to the General Contractor and corrected before the application of Sika products.

Platinum CI Stucco Ultra

TYPICAL WINDOW SILL (FLUSH)



- Ensure Senergy air/water-resistive barrier is properly applied into rough opening in accordance with application guidelines. Reference Senershield air/water-resistive barrier details.
- Do not apply finish into joint to receive sealant.
- Use non-hole punched version of CI Weep Track on sill.
- Senergy Crack Suppression: Flexguard 4 or SikaWall SRT Mesh embedded in Senergy Base Coat or SikaWall Stucco Surface Leveler.

PCISU-20 2404

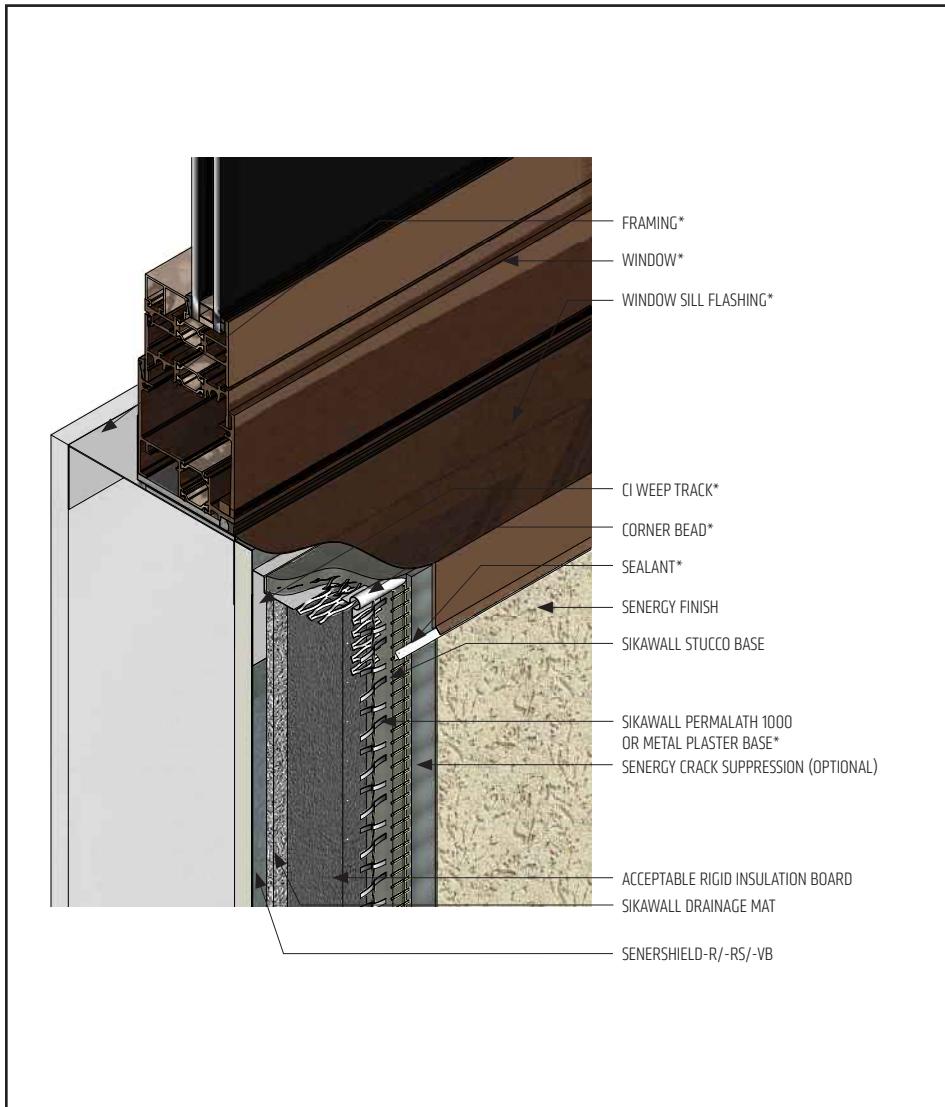
(*NOTE: BY OTHERS)

The details within are latest recommendations and are represent in good faith by Sika Corporation US (hereinafter Sika). The details are subject to change without notice. Sika accepts no liability for the end use of the details. For conditions not shown, consult Sika for review of specific details.

- Install Sika materials in accordance with current installation instructions.
- Unsatisfactory conditions shall be reported to the General Contractor and corrected before the application of Sika products.

Platinum CI Stucco Ultra

TYPICAL WINDOW SILL (RECESSED)



- Ensure Senergy air/water-resistive barrier is properly applied into rough opening in accordance with application guidelines. Reference Senershield air/water-resistive barrier details.
- Use non-hole punched version of CI Weep Track on sill.
- Senergy Crack Suppression: Flexguard 4 or SikaWall SRT Mesh embedded in Senergy Base Coat or SikaWall Stucco Surface Leveler.

PCISU-21 2404

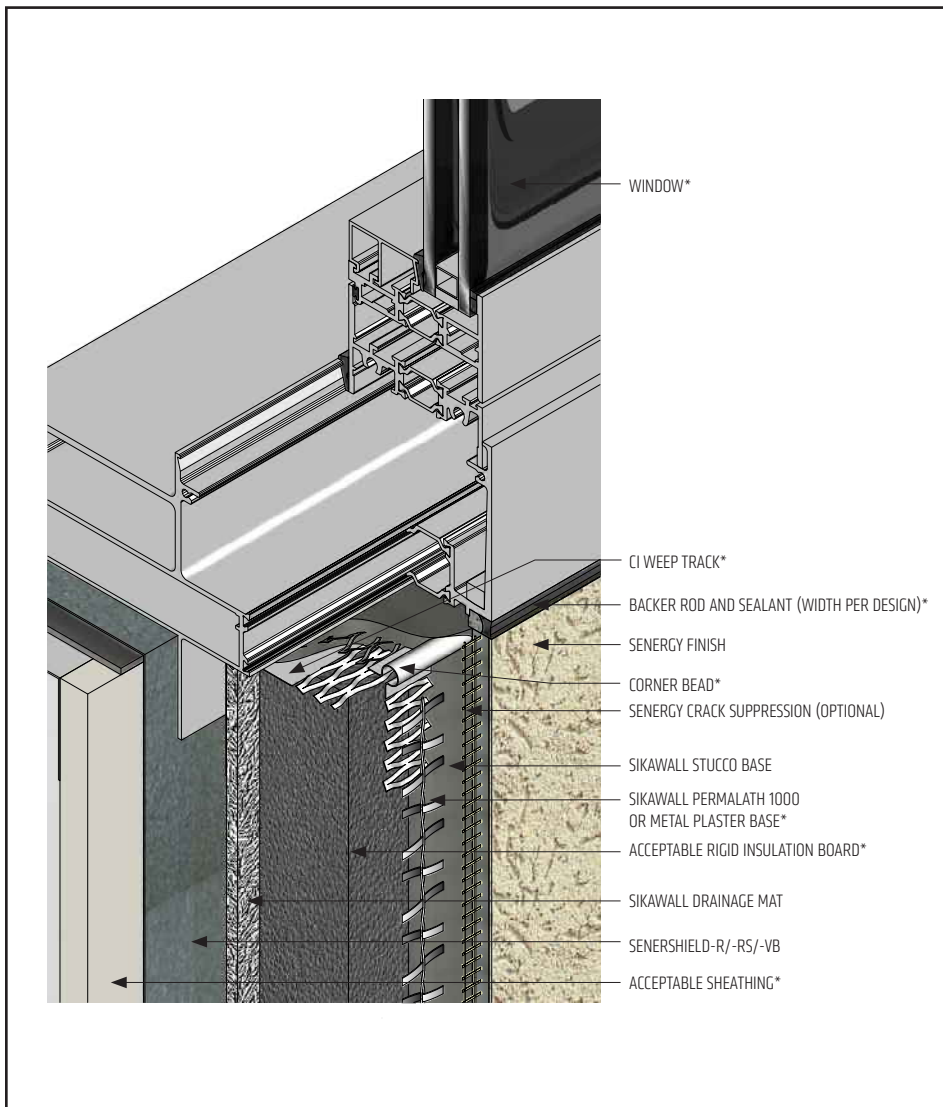
(*NOTE: BY OTHERS)

The details within are latest recommendations and are represent in good faith by Sika Corporation US (hereinafter Sika). The details are subject to change without notice. Sika accepts no liability for the end use of the details. For conditions not shown, consult Sika for review of specific details.

- Install Sika materials in accordance with current installation instructions.
- Unsatisfactory conditions shall be reported to the General Contractor and corrected before the application of Sika products.

Platinum CI Stucco Ultra

TYPICAL FLANGED WINDOW SILL



- Ensure Senergy air/water-resistive barrier is properly applied into rough opening in accordance with application guidelines. Reference Senershield air/water-resistive barrier details.
- Do not seal window sill flange unless recommended by window manufacturer.
- Use non-hole punched version of CI Weep Track on sill.
- Senergy Crack Suppression: Flexguard 4 or SikaWall SRT Mesh embedded in Senergy Base Coat or SikaWall Stucco Surface Leveler.

PCISU-22 2404

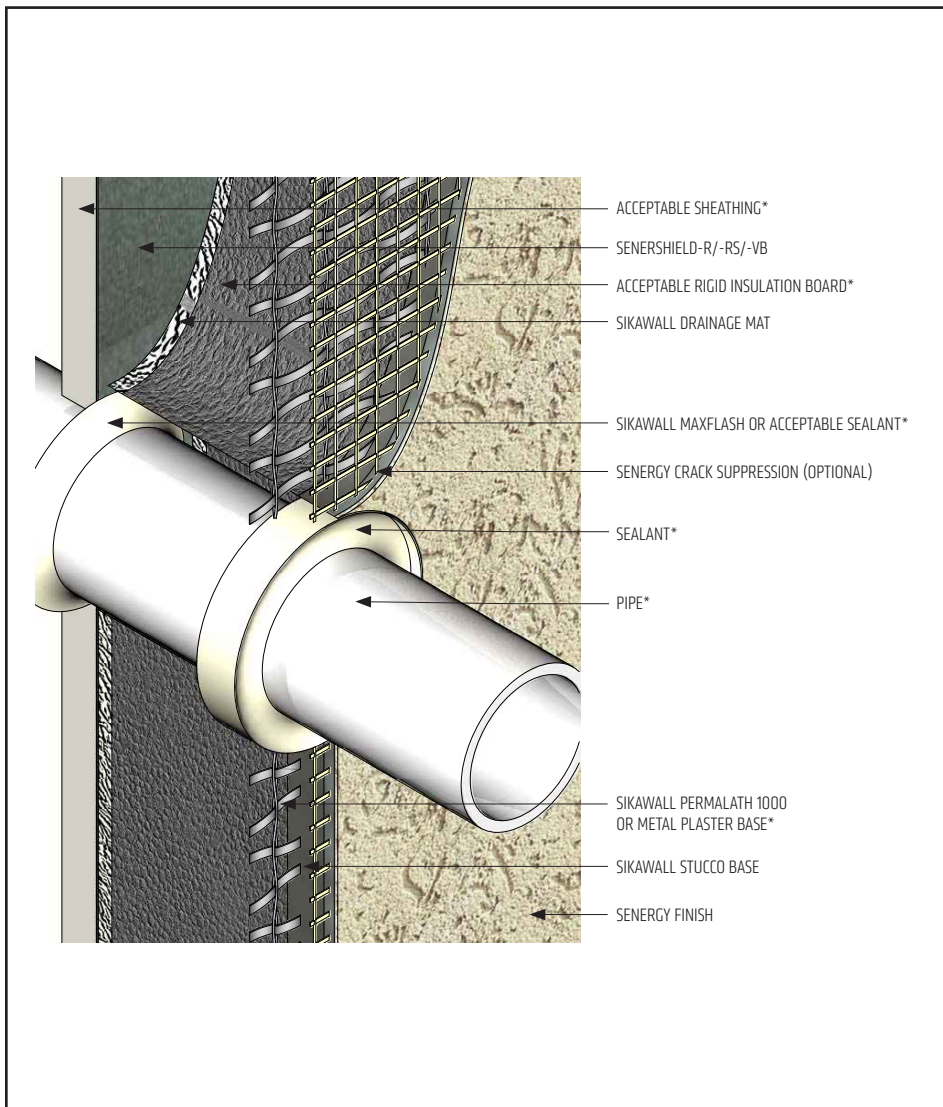
(*NOTE: BY OTHERS)

The details within are latest recommendations and are represent in good faith by Sika Corporation US (hereinafter Sika). The details are subject to change without notice. Sika accepts no liability for the end use of the details. For conditions not shown, consult Sika for review of specific details.

- Install Sika materials in accordance with current installation instructions.
- Unsatisfactory conditions shall be reported to the General Contractor and corrected before the application of Sika products.

Platinum CI Stucco Ultra

TYPICAL PIPE PENETRATION



- Ensure all penetrations into the system are properly sealed.
- Provide continuous air seal around perimeter of penetration prior to SikaWall Drainage Mat application.
- Senergy Crack Suppression: Flexguard 4 or SikaWall SRT Mesh embedded in Senergy Base Coat or SikaWall Stucco Surface Leveler.

PCISU-23 2404

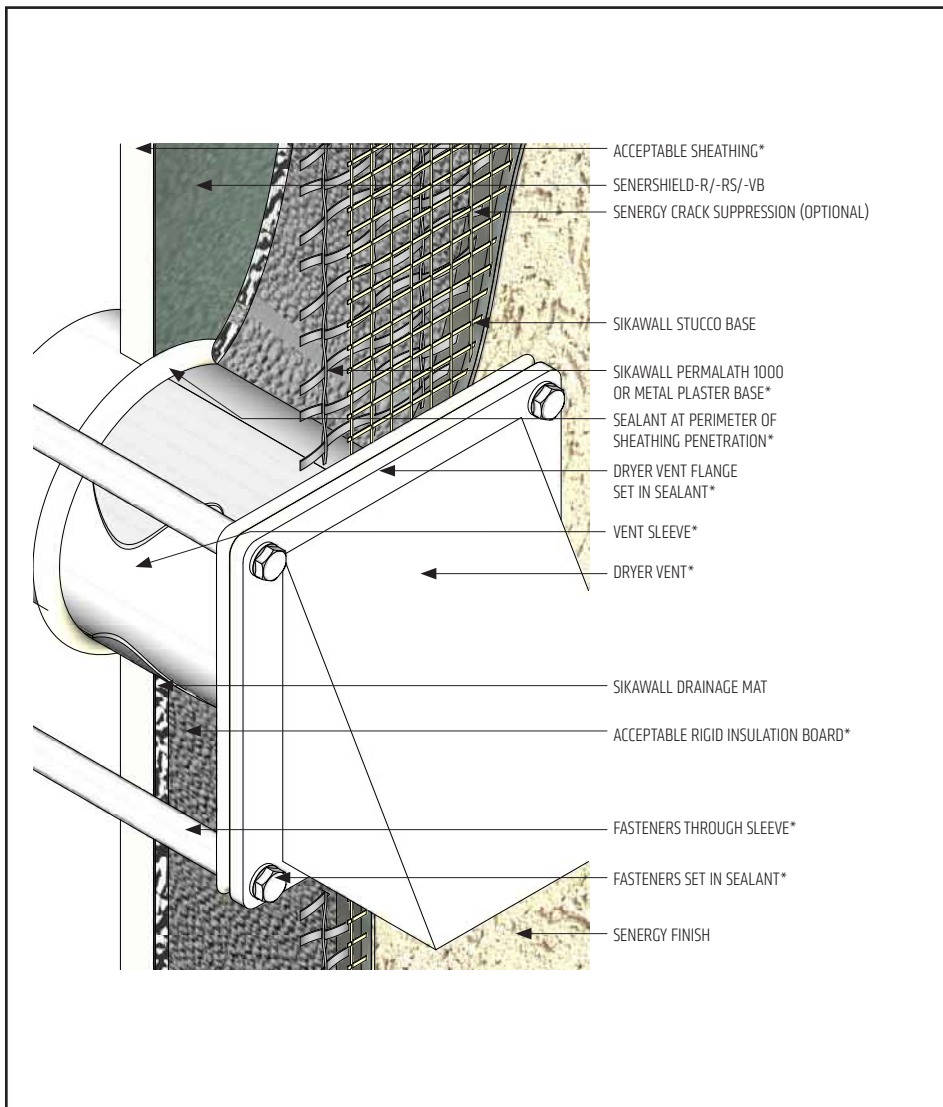
(*NOTE: BY OTHERS)

The details within are latest recommendations and are represent in good faith by Sika Corporation US (hereinafter Sika). The details are subject to change without notice. Sika accepts no liability for the end use of the details. For conditions not shown, consult Sika for review of specific details.

- Install Sika materials in accordance with current installation instructions.
- Unsatisfactory conditions shall be reported to the General Contractor and corrected before the application of Sika products.

Platinum CI Stucco Ultra

TYPICAL DRYER VENT



- Senergy Transition Treatment can be applied from sheathing onto vent pipe in lieu of the secondary seal.
- Ensure all fastener penetrations through the Platinum CI Stucco Ultra system are properly sealed.
- Senergy Joint/Transition Treatment Options: SikaWall MaxFlash, SikaWall Sheathing Fabric embedded in Senershield-R/-RS/-VB or SikaWall Flash Seal NP.
- Senergy Crack Suppression: Flexguard 4 or SikaWall SRT Mesh embedded in Senergy Base Coat or SikaWall Stucco Surface Leveler.

PCISU-24 2404

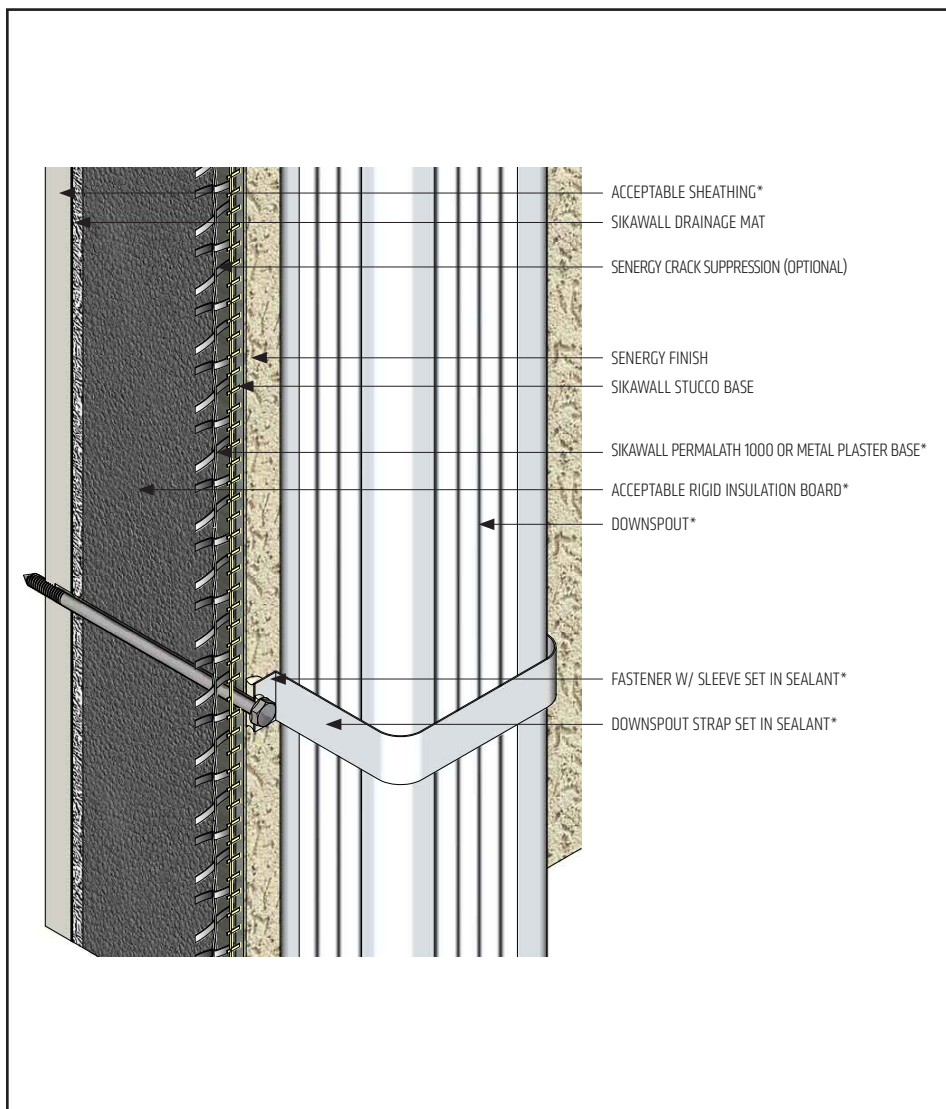
(*NOTE: BY OTHERS)

The details within are latest recommendations and are represent in good faith by Sika Corporation US (hereinafter Sika). The details are subject to change without notice. Sika accepts no liability for the end use of the details. For conditions not shown, consult Sika for review of specific details.

- Install Sika materials in accordance with current installation instructions.
- Unsatisfactory conditions shall be reported to the General Contractor and corrected before the application of Sika products.

Platinum CI Stucco Ultra

TYPICAL DOWNSPOUT



- Ensure all fastener penetrations through the Platinum CI Stucco Ultra system are properly sealed.
- Senergy Crack Suppression: Flexguard 4 or SikaWall SRT Mesh embedded in Senergy Base Coat or SikaWall Stucco Surface Leveler.

PCISU-25 2404

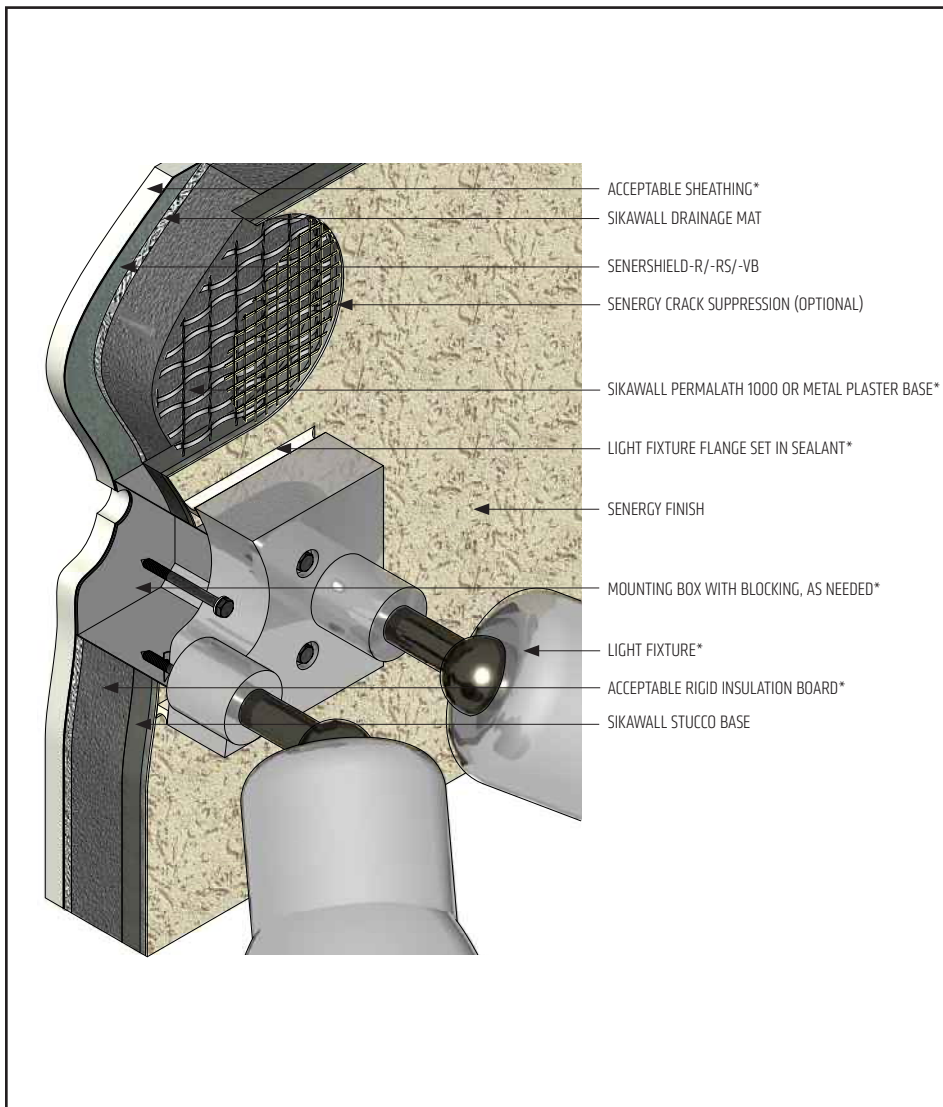
(*NOTE: BY OTHERS)

The details within are latest recommendations and are represent in good faith by Sika Corporation US (hereinafter Sika). The details are subject to change without notice. Sika accepts no liability for the end use of the details. For conditions not shown, consult Sika for review of specific details.

- Install Sika materials in accordance with current installation instructions.
- Unsatisfactory conditions shall be reported to the General Contractor and corrected before the application of Sika products.

Platinum CI Stucco Ultra

TYPICAL LIGHT FIXTURE



- Ensure all fastener penetrations through the Platinum CI Stucco Ultra system are properly sealed.
- Senergy Crack Suppression: Flexguard 4 or SikaWall SRT Mesh embedded in Senergy Base Coat or SikaWall Stucco Surface Leveler.

PCISU-26 2404

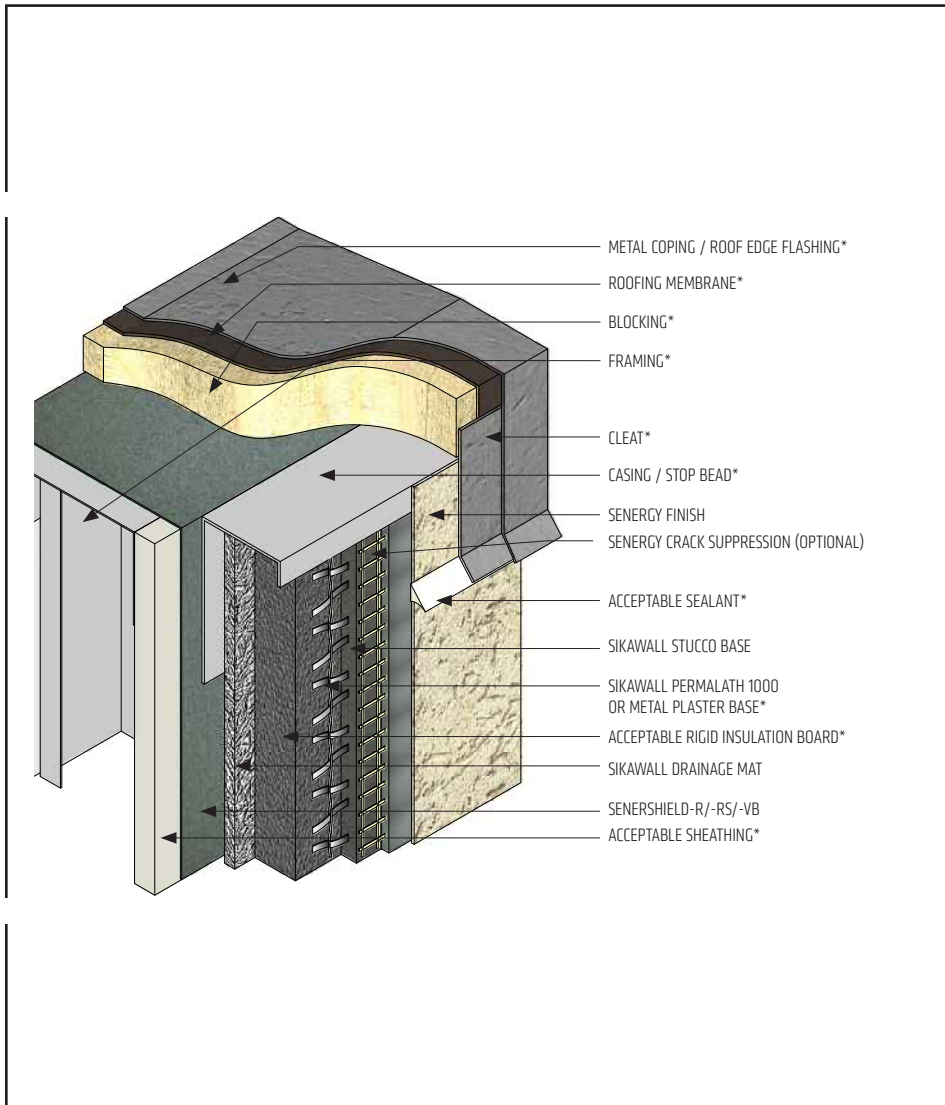
(*NOTE: BY OTHERS)

The details within are latest recommendations and are represent in good faith by Sika Corporation US (hereinafter Sika). The details are subject to change without notice. Sika accepts no liability for the end use of the details. For conditions not shown, consult Sika for review of specific details.

- Install Sika materials in accordance with current installation instructions.
- Unsatisfactory conditions shall be reported to the General Contractor and corrected before the application of Sika products.

Platinum CI Stucco Ultra

TYPICAL TERMINATION AT METAL COPING / ROOF EDGE FLASHING - OPTION 01



- It is recommended to lap coping or roof edge flashing over the Platinum CI Stucco Ultra system a minimum of 2" (50 mm) with drip edge sealed.
- Senergy Crack Suppression: Flexguard 4 or SikaWall SRT Mesh embedded in Senergy Base Coat or SikaWall Stucco Surface Leveler.

PCISU-27 2404

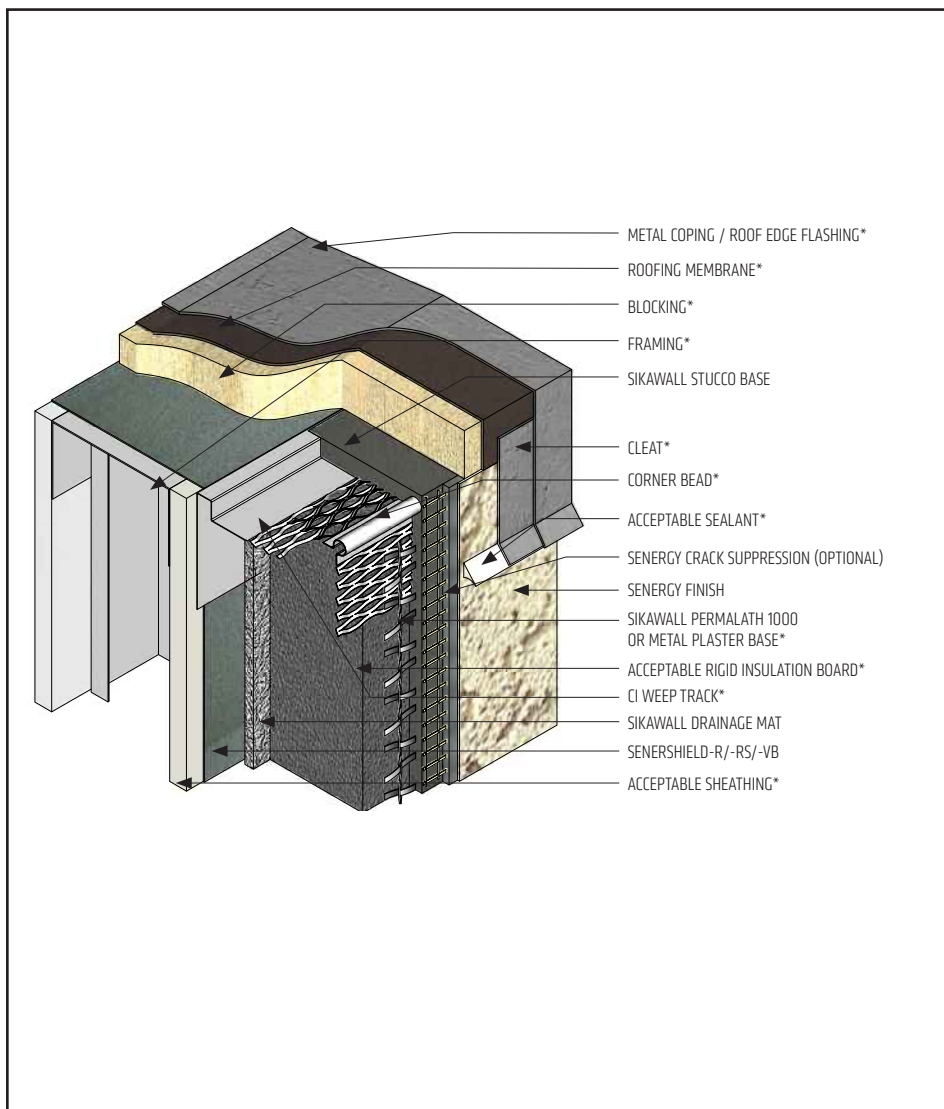
(*NOTE: BY OTHERS)

The details within are latest recommendations and are represent in good faith by Sika Corporation US (hereinafter Sika). The details are subject to change without notice. Sika accepts no liability for the end use of the details. For conditions not shown, consult Sika for review of specific details.

- Install Sika materials in accordance with current installation instructions.
- Unsatisfactory conditions shall be reported to the General Contractor and corrected before the application of Sika products.

Platinum CI Stucco Ultra

TYPICAL TERMINATION AT METAL COPING / ROOF EDGE FLASHING - OPTION 02



- It is recommended to lap coping or roof edge flashing over the Platinum CI Stucco Ultra system a minimum of 2" (50 mm) with drip edge sealed.
- Senergy Crack Suppression: Flexguard 4 or SikaWall SRT Mesh embedded in Senergy Base Coat or SikaWall Stucco Surface Leveler.

PCISU-28 2404

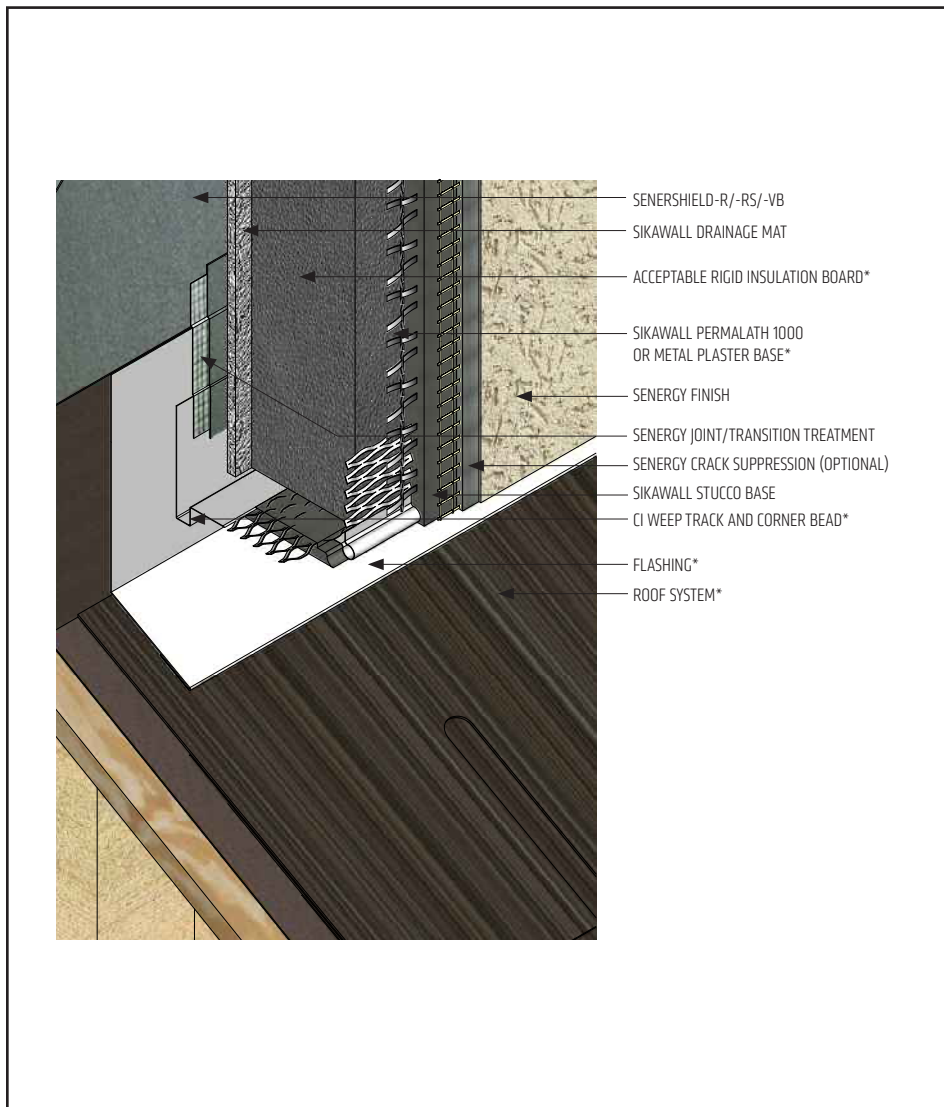
(*NOTE: BY OTHERS)

The details within are latest recommendations and are represent in good faith by Sika Corporation US (hereinafter Sika). The details are subject to change without notice. Sika accepts no liability for the end use of the details. For conditions not shown, consult Sika for review of specific details.

- Install Sika materials in accordance with current installation instructions.
- Unsatisfactory conditions shall be reported to the General Contractor and corrected before the application of Sika products.

Platinum CI Stucco Ultra

TYPICAL FLASHING / TERMINATION AT ROOF



- Use Senergy Transition Treatment to lap on to the CI Weep Track flange.
- Terminate Platinum CI Stucco Ultra system a minimum of 2" (50 mm) above sloped roof.
- Senergy Joint/Transition Treatment Options: SikaWall MaxFlash, SikaWall Sheathing Fabric embedded in Senershield-R/-RS/-VB or SikaWall Flash Seal NP.
- Senergy Crack Suppression: Flexguard 4 or SikaWall SRT Mesh embedded in Senergy Base Coat or SikaWall Stucco Surface Leveler.

PCISU-29 2404

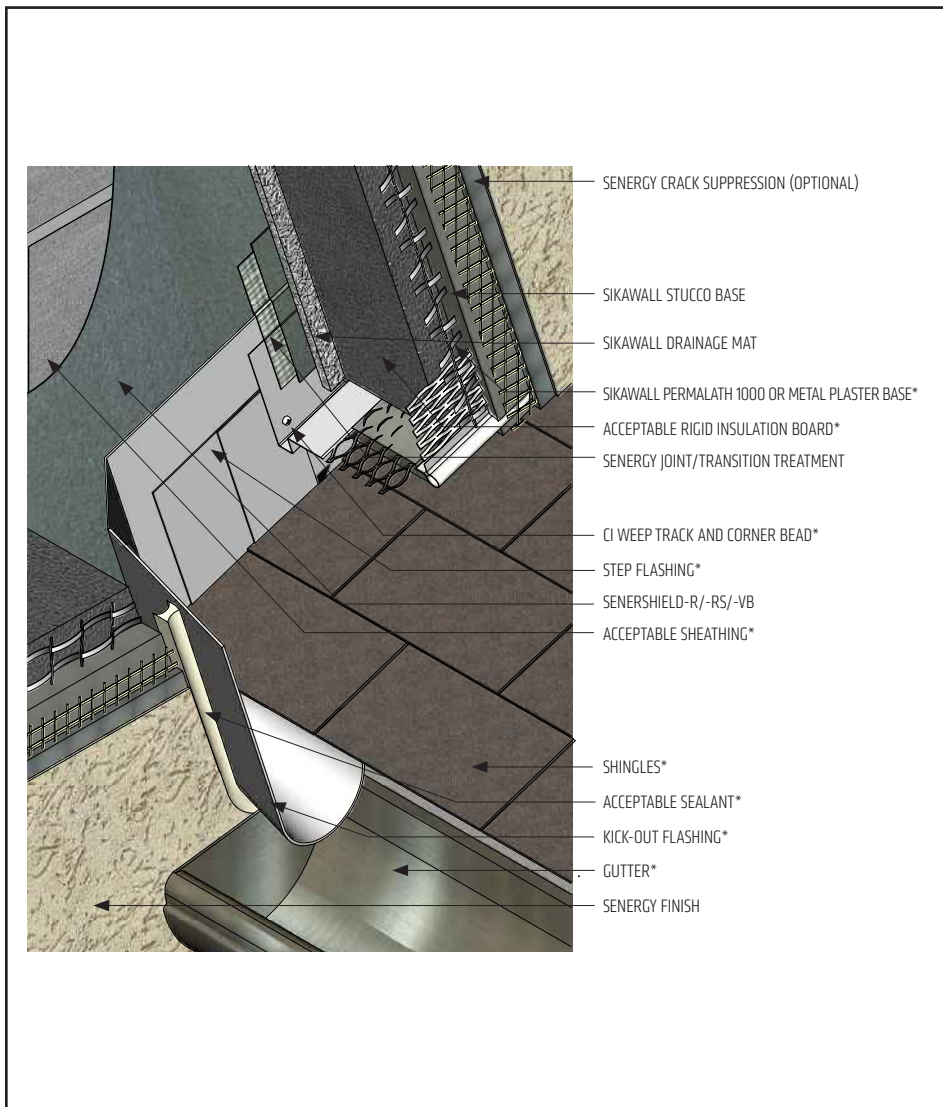
(*NOTE: BY OTHERS)

The details within are latest recommendations and are represent in good faith by Sika Corporation US (hereinafter Sika). The details are subject to change without notice. Sika accepts no liability for the end use of the details. For conditions not shown, consult Sika for review of specific details.

- Install Sika materials in accordance with current installation instructions.
- Unsatisfactory conditions shall be reported to the General Contractor and corrected before the application of Sika products.

Platinum CI Stucco Ultra

TYPICAL KICK-OUT FLASHING



- Use Senergy Transition Treatment to lap on to the CI Weep Track flange.
- Terminate Platinum CI Stucco Ultra system a minimum of 2" (50 mm) above sloped roof.
- Extend step flashing 2" (50 mm) behind Platinum CI Stucco Ultra system.
- Kickout flashing: sealed or soldered seams, recommended minimum 4" (100 mm) in height, extend 2" (50 mm) from wall and angled to direct water into gutter/away from wall surface.
- Senergy Joint/Transition Treatment Options: SikaWall MaxFlash, SikaWall Sheathing Fabric embedded in Senershield-R/-RS/-VB or SikaWall Flash Seal NP.
- Senergy Crack Suppression: Flexguard 4 or SikaWall SRT Mesh embedded in Senergy Base Coat or SikaWall Stucco Surface Leveler.

PCISU-30 2404

(*NOTE: BY OTHERS)

The details within are latest recommendations and are represent in good faith by Sika Corporation US (hereinafter Sika). The details are subject to change without notice. Sika accepts no liability for the end use of the details. For conditions not shown, consult Sika for review of specific details.

- Install Sika materials in accordance with current installation instructions.
- Unsatisfactory conditions shall be reported to the General Contractor and corrected before the application of Sika products.



LIMITED WARRANTY NOTICE

Prior to each use of any product of Sika Corporation, its subsidiaries or affiliates ("SIKA"), the user must always read and follow the warnings and instructions on the product's most current product label, Product Data Sheet and Safety Data Sheet which are available at usa.sika.com/senenergy or by calling our Technical Service Department at +1 (800) 589-1336.

Nothing contained in any SIKA literature or materials relieves the user of the obligation to read and follow the warnings and instructions for each SIKA product as set forth in the current product label, Product Data Sheet and Safety Data Sheet prior to use of the SIKA product.

SIKA warrants this product for one year from date of installation to be free from manufacturing defects and to meet the technical properties on the current Product Data Sheet if used as directed within the product's shelf life. User determines suitability of product for intended use and assumes all risks. User's and/or buyer's sole remedy shall be limited to the purchase price or replacement of this product exclusive of any labor costs. NO OTHER WARRANTIES EXPRESS OR IMPLIED SHALL APPLY INCLUDING ANY WARRANTY OF MERCHANTABILITY OR FITNESS FOR A PARTICULAR PURPOSE. SIKA SHALL NOT BE LIABLE UNDER ANY LEGAL THEORY FOR SPECIAL OR CONSEQUENTIAL DAMAGES. SIKA SHALL NOT BE RESPONSIBLE FOR THE USE OF THIS PRODUCT IN A MANNER TO INFRINGE ON ANY PATENT OR ANY OTHER INTELLECTUAL PROPERTY RIGHTS HELD BY OTHERS. Sale of SIKA products are subject to the Terms and Conditions of Sale which are available at usa.sika.com.

For the most current version of this literature, please visit our website at usa.sika.com/senergy.

Sika Corporation
201 Polito Avenue
Lyndhurst, NJ 07071 USA
Customer Service +1 (800) 433-9517
Technical Service +1 (800) 589-1336
usa.sika.com/senergy
Rev April 2024

BUILDING TRUST

