

Senergy[®]



Senergy Stucco Resurfacing System

Typical 2D Details

BUILDING TRUST



Senergy Stucco Resurfacing System

Typical 2D Details

Table of Contents

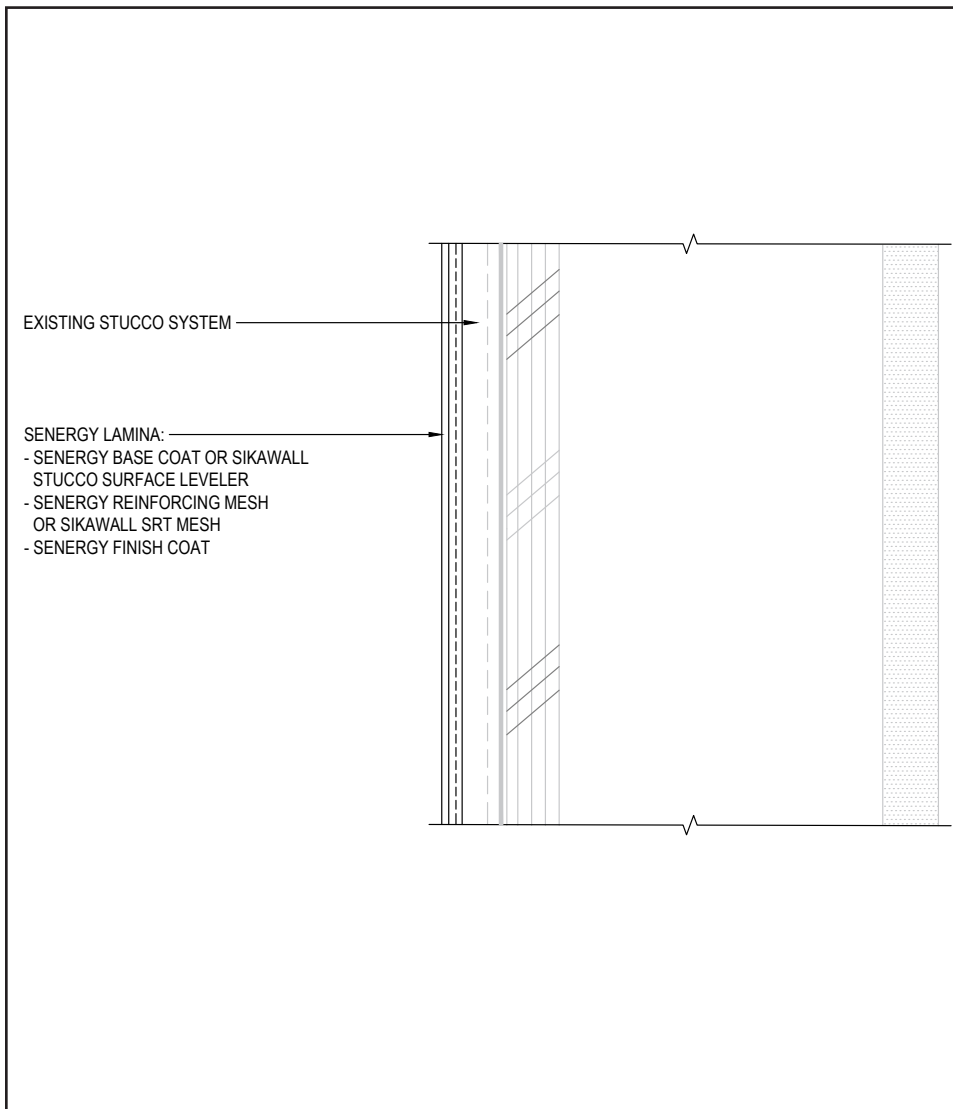
1. Typical Application
2. Typical Application (Isometric)
3. Surface Control Joint
4. Clad Window Jamb
5. Clad Window Head
6. Clad Window Sill
7. Primed Window Head
8. Primed Window Jamb
9. Primed Window Sill
10. Expansion Joint at Floor Line
11. Termination at Soffit or Gable
12. Downspout Application
13. Pipe Penetration
14. Light Fixture
15. Dryer Vent
16. Termination at Foundation
17. Metal Coping
18. Corner Bead

Notes:

- **The details within are the latest recommendations and are represent in good faith by Sika Corporation US (hereinafter Sika). The details are subject to change without notice. Sika accepts no liability for the end use of the details. For conditions not shown, consult Sika for review of specific details.**
- **Install Sika materials in accordance with current installation instructions.**
- **Unsatisfactory conditions shall be reported to the General Contractor and corrected before the application of Sika products.**

Senergy Stucco Resurfacing System

TYPICAL APPLICATION



- Prior to resurfacing, consideration should be given to windows and other penetrations. Replacing sealant, flashing and/or inferior or damaged windows should be completed as part of a major resurfacing project.
- Perform any repairs required beyond the scope of resurfacing. Please reference Technical Bulletins *Procedure for Repairing Stucco* for more information.
- Perform bond testing to confirm base coat adhesion. Please reference Technical Bulletin *Basics of Conducting Field Adhesion Testing* for more information. Apply SikaWall Surface Stabilizer WB to existing paint or acrylic finish as determined by adhesion testing.

01 0724

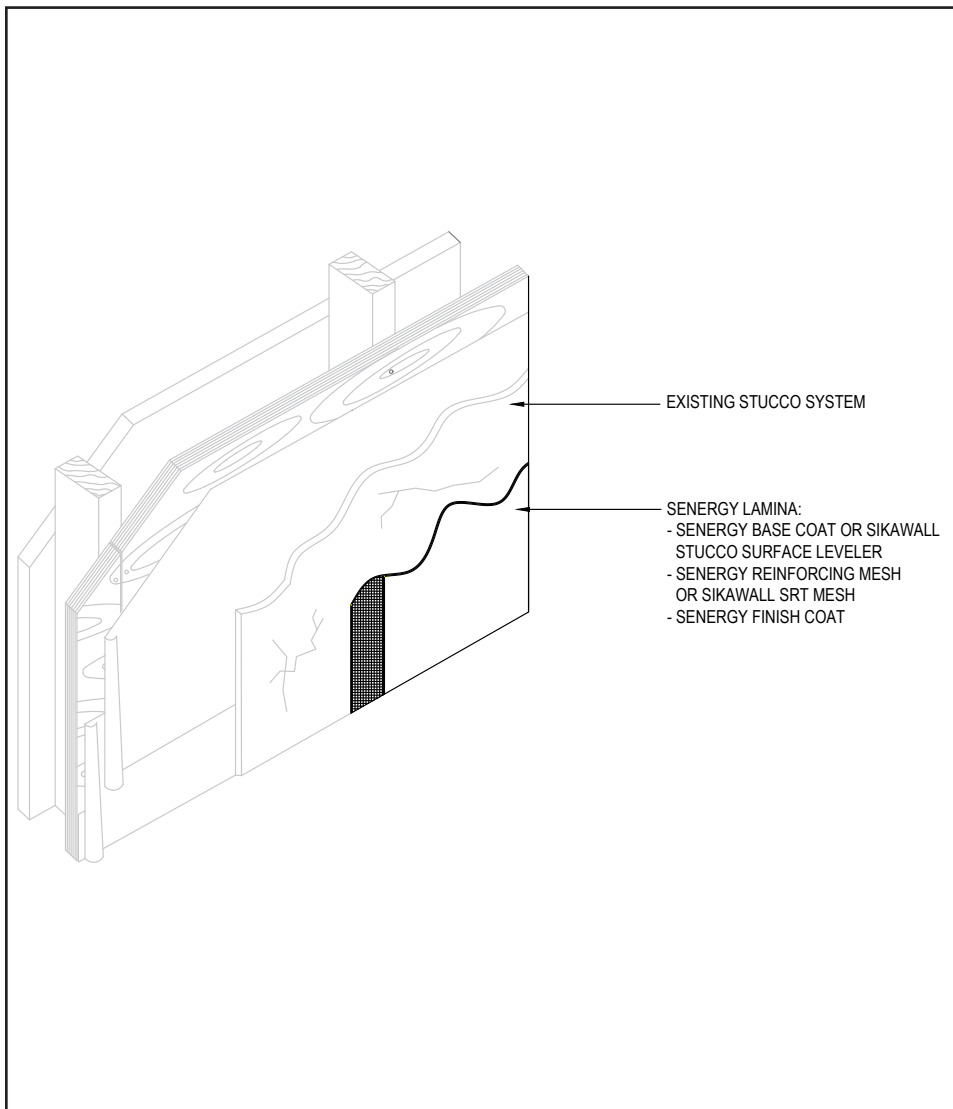
(*NOTE: BY OTHERS)

The details within are the latest recommendations and are represented in good faith by Sika Corporation US (hereinafter Sika). The details are subject to change without notice. Sika accepts no liability for the end use of the details. For conditions not shown, consult Sika for review of specific details.

- Install Sika materials in accordance with current installation instructions.
- Unsatisfactory conditions shall be reported to the General Contractor and corrected before the application of Sika products.

Senergy Stucco Resurfacing System

TYPICAL APPLICATION (ISOMETRIC)



02 0724

(*NOTE: BY OTHERS)

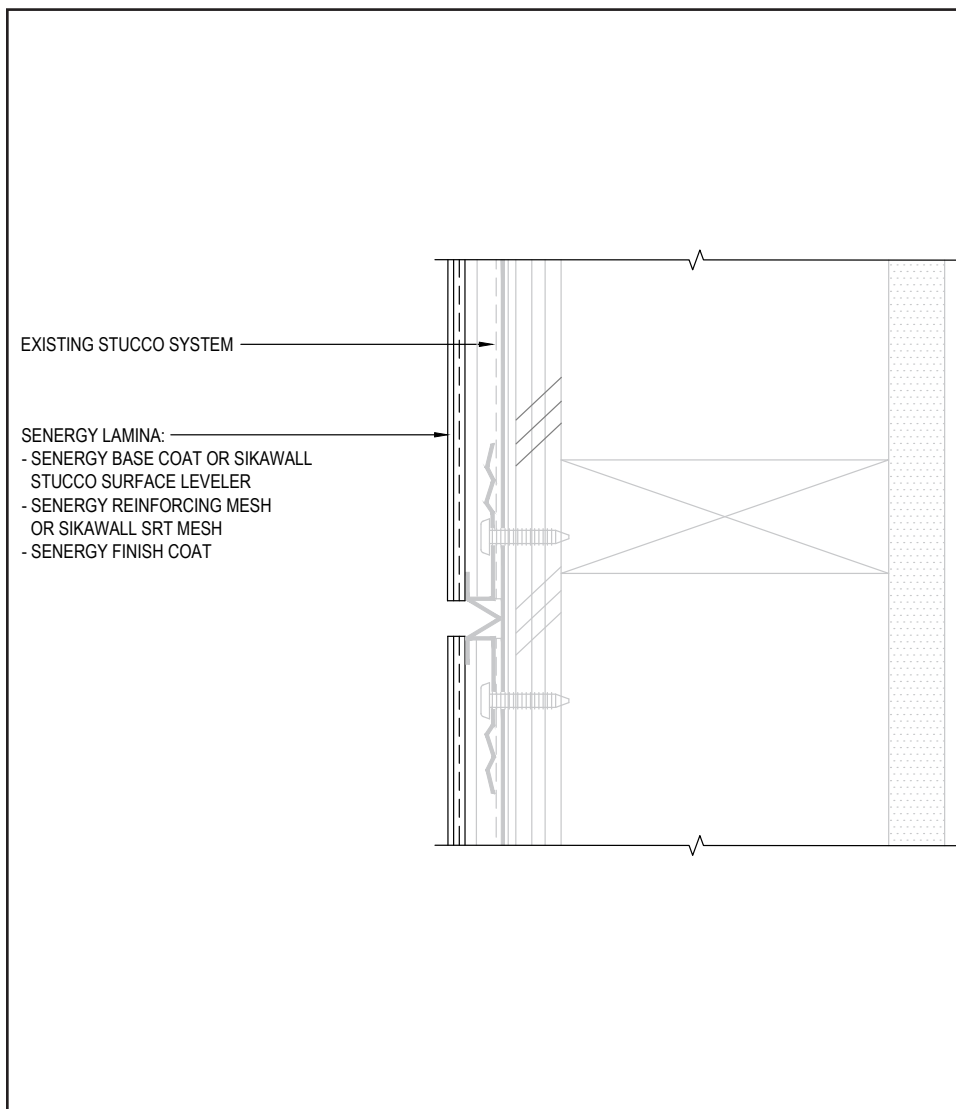
- Prior to resurfacing, consideration should be given to windows and other penetrations. Replacing sealant, flashing and/or inferior or damaged windows should be completed as part of a major resurfacing project.
- Perform any repairs required beyond the scope of resurfacing. Please reference Technical Bulletins *Procedure for Repairing Stucco* for more information.
- Perform bond testing to confirm base coat adhesion. Please reference Technical Bulletin *Basics of Conducting Field Adhesion Testing* for more information. Apply SikaWall Surface Stabilizer WB to existing paint or acrylic finish as determined by adhesion testing.

The details within are the latest recommendations and are represented in good faith by Sika Corporation US (hereinafter Sika). The details are subject to change without notice. Sika accepts no liability for the end use of the details. For conditions not shown, consult Sika for review of specific details.

- Install Sika materials in accordance with current installation instructions.
- Unsatisfactory conditions shall be reported to the General Contractor and corrected before the application of Sika products.

Senergy Stucco Resurfacing System

TYPICAL SURFACE CONTROL JOINT



- Ensure control joints are honored and reinforcing mesh and base coat is not continuous over the joint.

03 0724

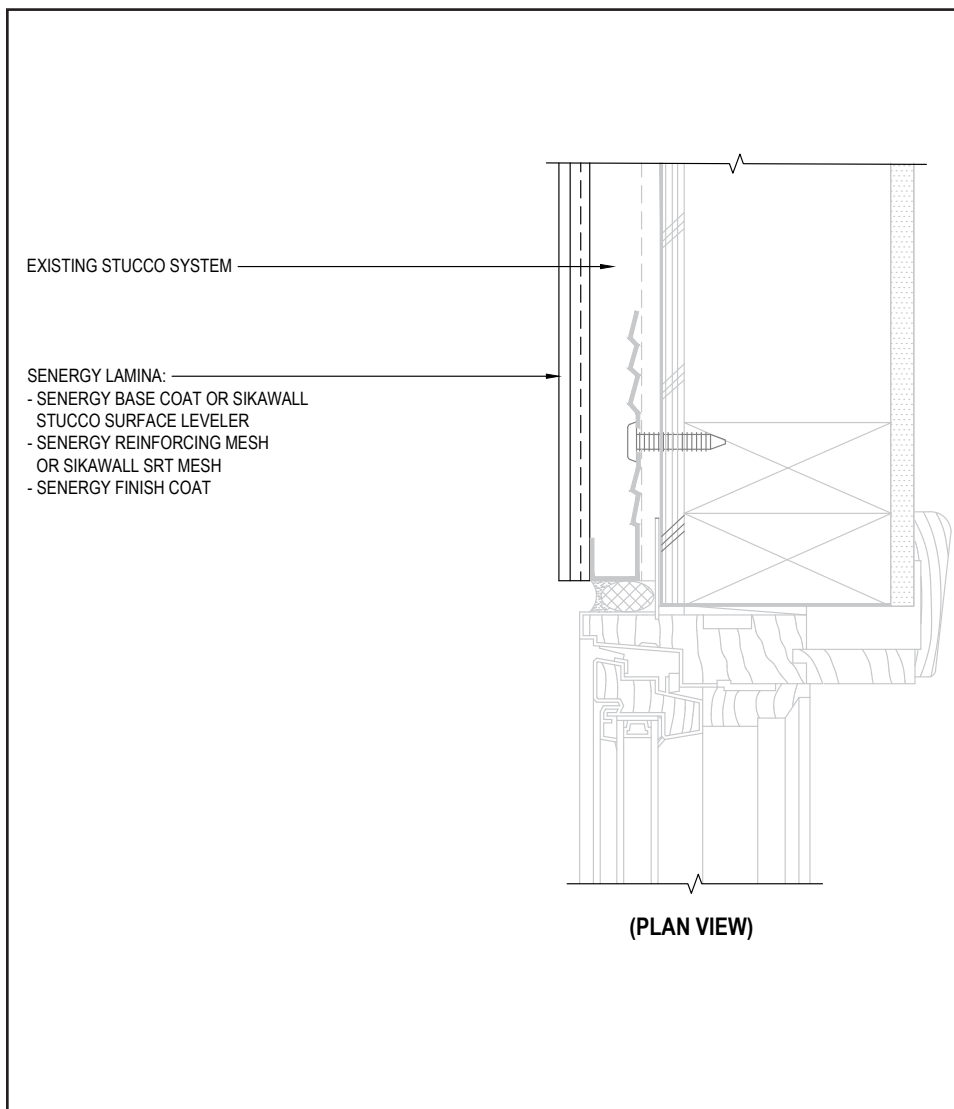
(*NOTE: BY OTHERS)

The details within are the latest recommendations and are represented in good faith by Sika Corporation US (hereinafter Sika). The details are subject to change without notice. Sika accepts no liability for the end use of the details. For conditions not shown, consult Sika for review of specific details.

- Install Sika materials in accordance with current installation instructions.
- Unsatisfactory conditions shall be reported to the General Contractor and corrected before the application of Sika products.

Senergy Stucco Resurfacing System

TYPICAL CLAD WINDOW JAMB



- Reference *Acceptable Sealants for use with Senergy Wall Systems* Technical Bulletin for a list of sealants.

04 0724

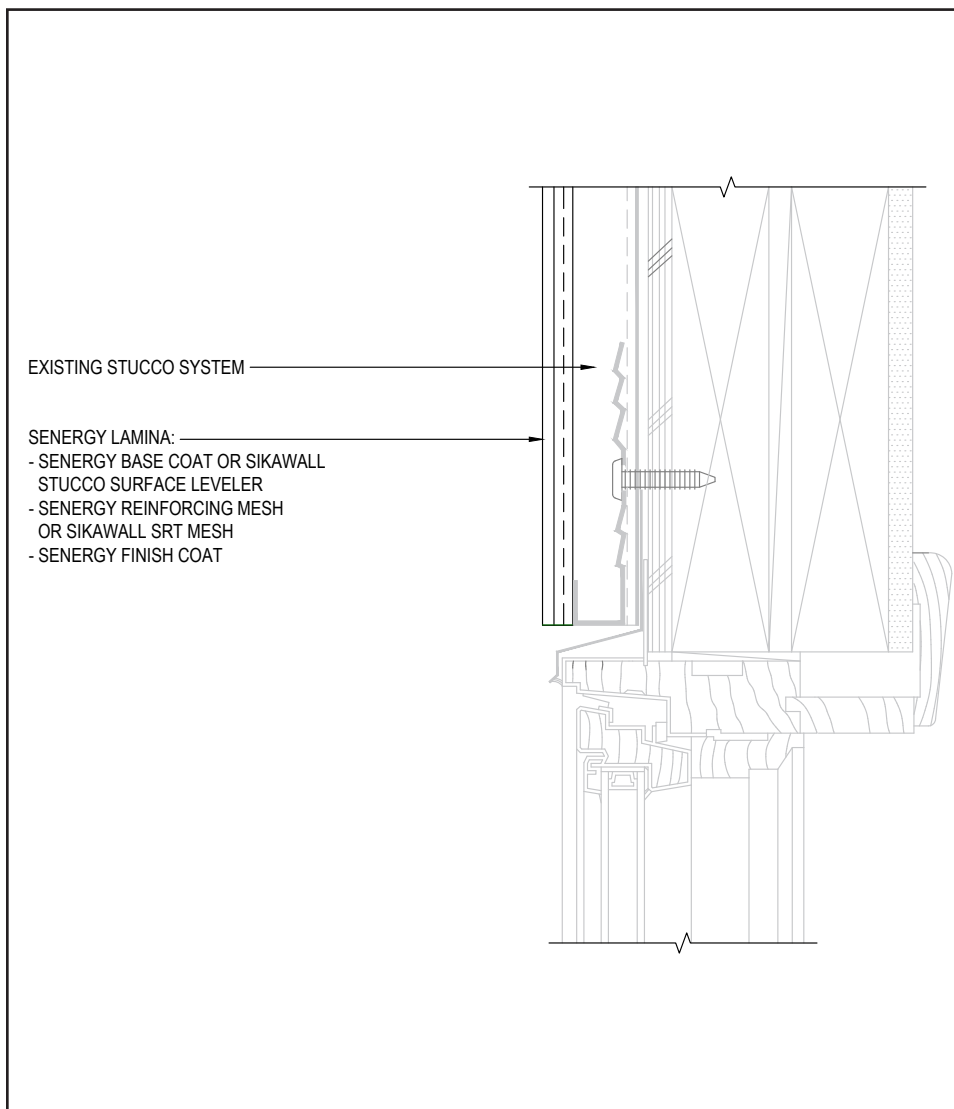
(*NOTE: BY OTHERS)

The details within are the latest recommendations and are represented in good faith by Sika Corporation US (hereinafter Sika). The details are subject to change without notice. Sika accepts no liability for the end use of the details. For conditions not shown, consult Sika for review of specific details.

- Install Sika materials in accordance with current installation instructions.
- Unsatisfactory conditions shall be reported to the General Contractor and corrected before the application of Sika products.

Senergy Stucco Resurfacing System

TYPICAL CLAD WINDOW HEAD



05 0724

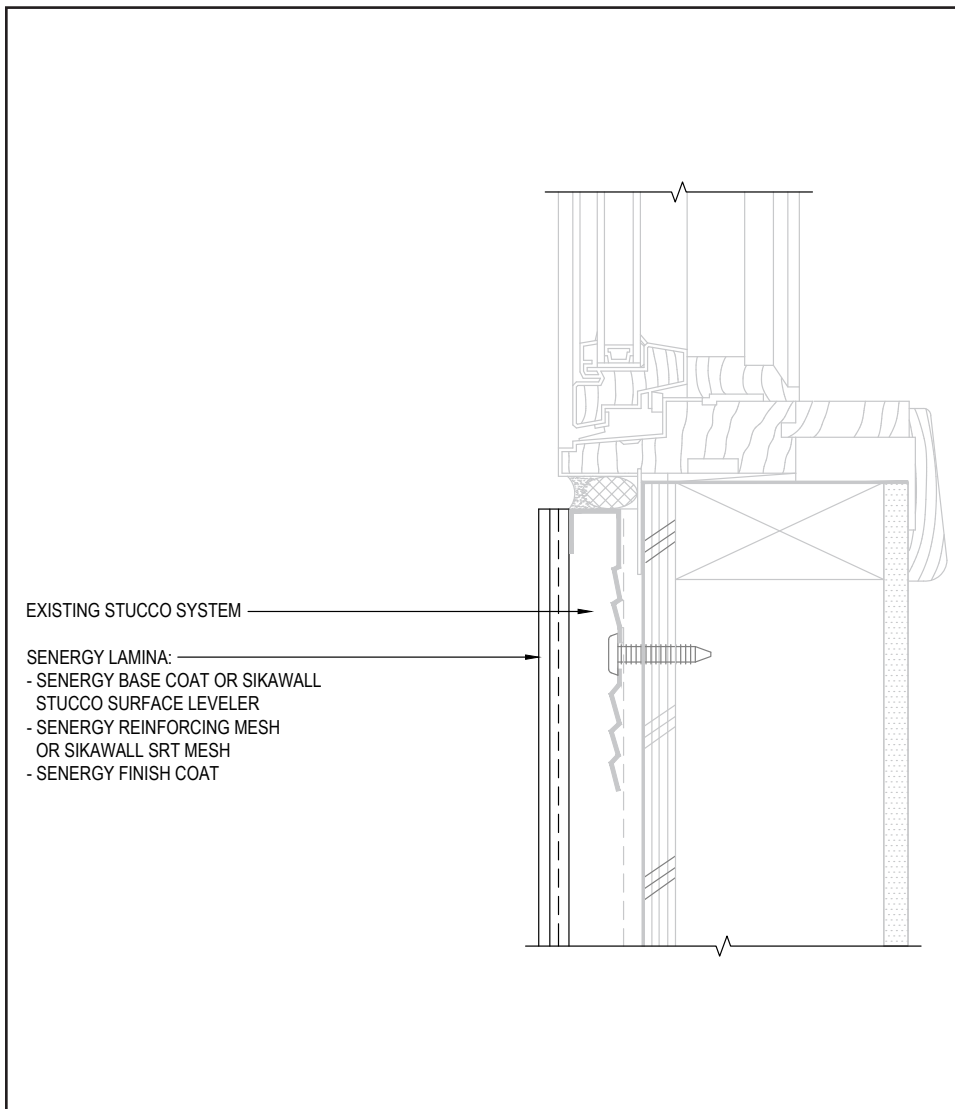
(*NOTE: BY OTHERS)

The details within are the latest recommendations and are represented in good faith by Sika Corporation US (hereinafter Sika). The details are subject to change without notice. Sika accepts no liability for the end use of the details. For conditions not shown, consult Sika for review of specific details.

- Install Sika materials in accordance with current installation instructions.
- Unsatisfactory conditions shall be reported to the General Contractor and corrected before the application of Sika products.

Senergy Stucco Resurfacing System

TYPICAL CLAD WINDOW SILL



- Reference *Acceptable Sealants for use with Senergy Wall Systems* Technical Bulletin for a list of sealants.

06 0724

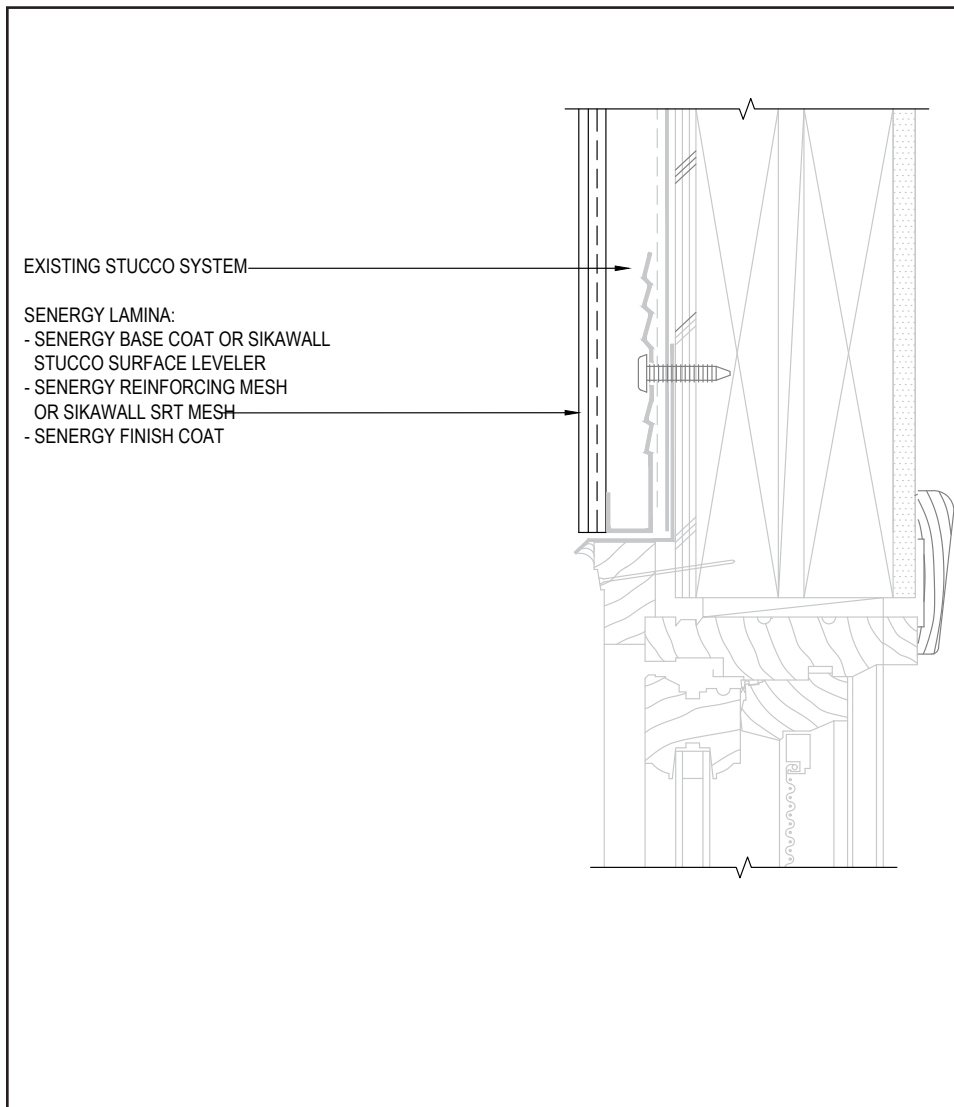
(*NOTE: BY OTHERS)

The details within are the latest recommendations and are represented in good faith by Sika Corporation US (hereinafter Sika). The details are subject to change without notice. Sika accepts no liability for the end use of the details. For conditions not shown, consult Sika for review of specific details.

- Install Sika materials in accordance with current installation instructions.
- Unsatisfactory conditions shall be reported to the General Contractor and corrected before the application of Sika products.

Senergy Stucco Resurfacing System

TYPICAL PRIMED WINDOW HEAD



07 0724

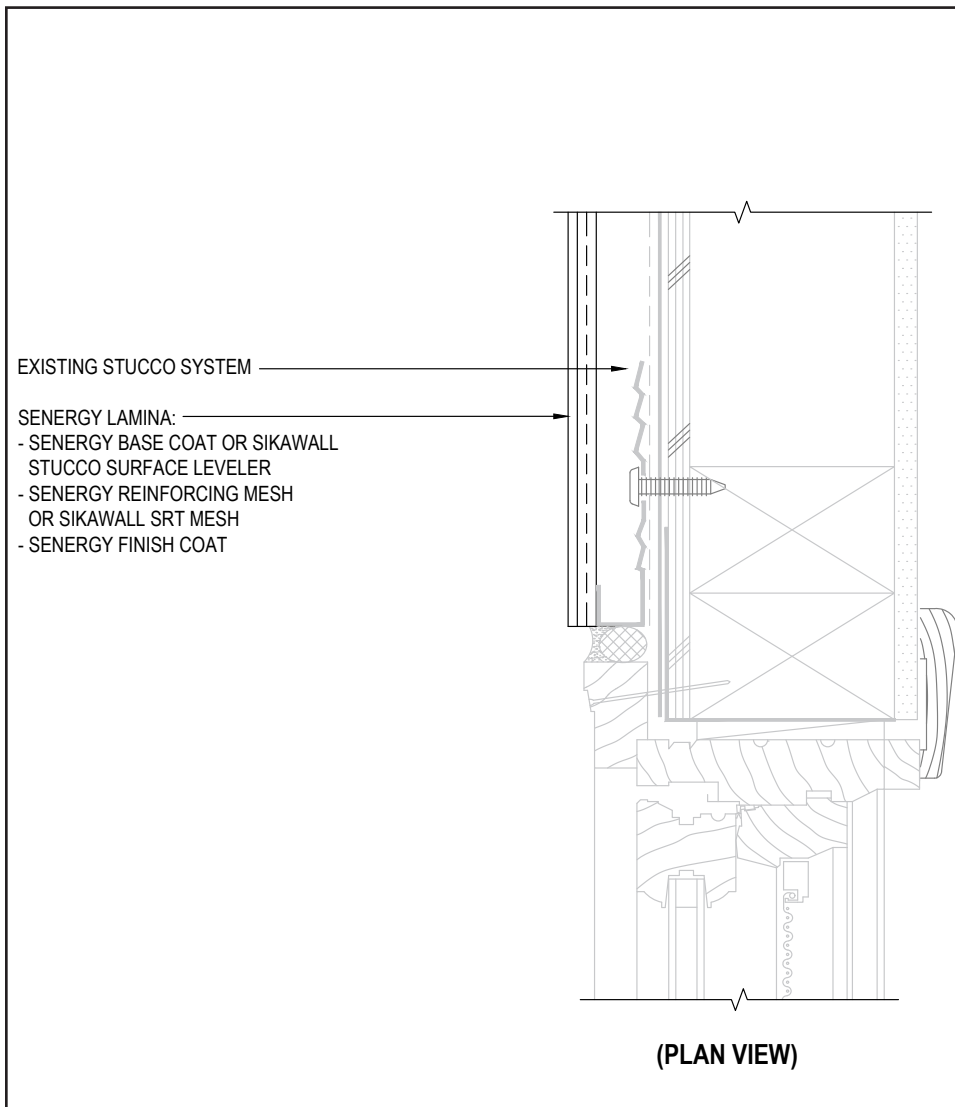
(*NOTE: BY OTHERS)

The details within are the latest recommendations and are represented in good faith by Sika Corporation US (hereinafter Sika). The details are subject to change without notice. Sika accepts no liability for the end use of the details. For conditions not shown, consult Sika for review of specific details.

- Install Sika materials in accordance with current installation instructions.
- Unsatisfactory conditions shall be reported to the General Contractor and corrected before the application of Sika products.

Senergy Stucco Resurfacing System

TYPICAL PRIMED WINDOW JAMB



- Reference *Acceptable Sealants for use with Senergy Wall Systems* Technical Bulletin for a list of sealants.

08 0724

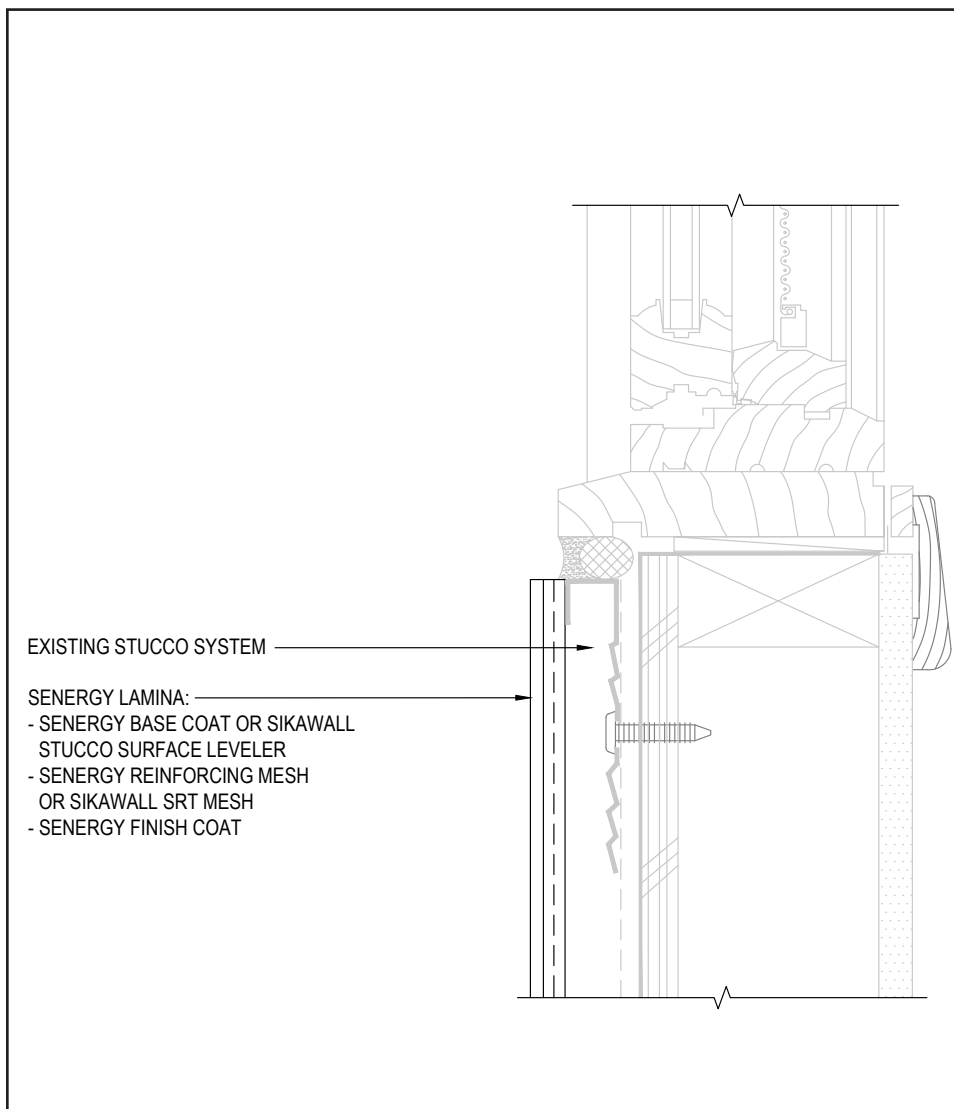
(*NOTE: BY OTHERS)

The details within are the latest recommendations and are represented in good faith by Sika Corporation US (hereinafter Sika). The details are subject to change without notice. Sika accepts no liability for the end use of the details. For conditions not shown, consult Sika for review of specific details.

- Install Sika materials in accordance with current installation instructions.
- Unsatisfactory conditions shall be reported to the General Contractor and corrected before the application of Sika products.

Senergy Stucco Resurfacing System

TYPICAL PRIMED WINDOW SILL



- Reference *Acceptable Sealants for use with Senergy Wall Systems* Technical Bulletin for a list of sealants.

EXISTING STUCCO SYSTEM

SENERGY LAMINA:
 - SENERGY BASE COAT OR SIKAWALL
 STUCCO SURFACE LEVELER
 - SENERGY REINFORCING MESH
 OR SIKAWALL SRT MESH
 - SENERGY FINISH COAT

09 0724

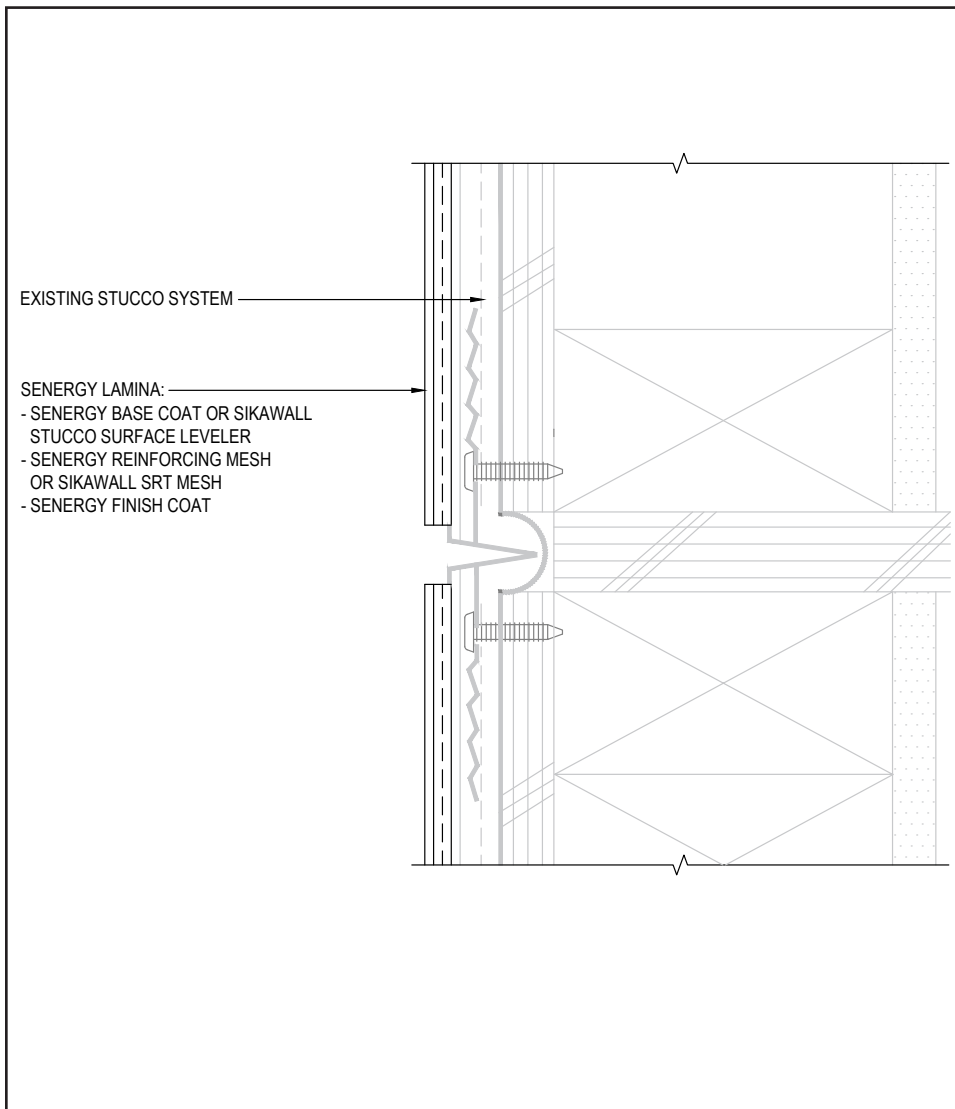
(*NOTE: BY OTHERS)

The details within are the latest recommendations and are represented in good faith by Sika Corporation US (hereinafter Sika). The details are subject to change without notice. Sika accepts no liability for the end use of the details. For conditions not shown, consult Sika for review of specific details.

- Install Sika materials in accordance with current installation instructions.
- Unsatisfactory conditions shall be reported to the General Contractor and corrected before the application of Sika products.

Senergy Stucco Resurfacing System

TYPICAL EXPANSION JOINT AT FLOOR LINE



- Ensure expansion joints are honored and reinforcing mesh and base coat is not continuous over the joint.

10 0724

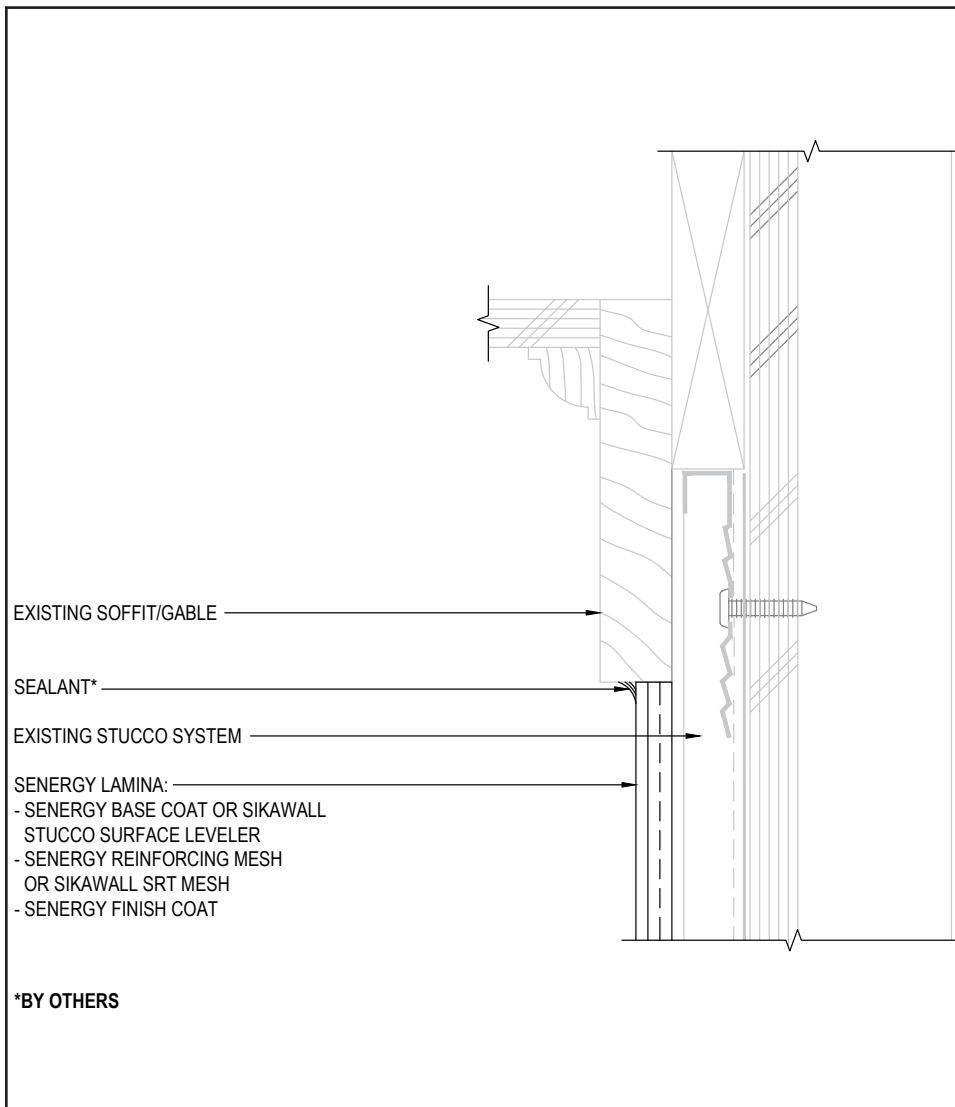
(*NOTE: BY OTHERS)

The details within are the latest recommendations and are represented in good faith by Sika Corporation US (hereinafter Sika). The details are subject to change without notice. Sika accepts no liability for the end use of the details. For conditions not shown, consult Sika for review of specific details.

- Install Sika materials in accordance with current installation instructions.
- Unsatisfactory conditions shall be reported to the General Contractor and corrected before the application of Sika products.

Senergy Stucco Resurfacing System

TYPICAL TERMINATION AT SOFFIT OR GABLE



***BY OTHERS**

11 0724

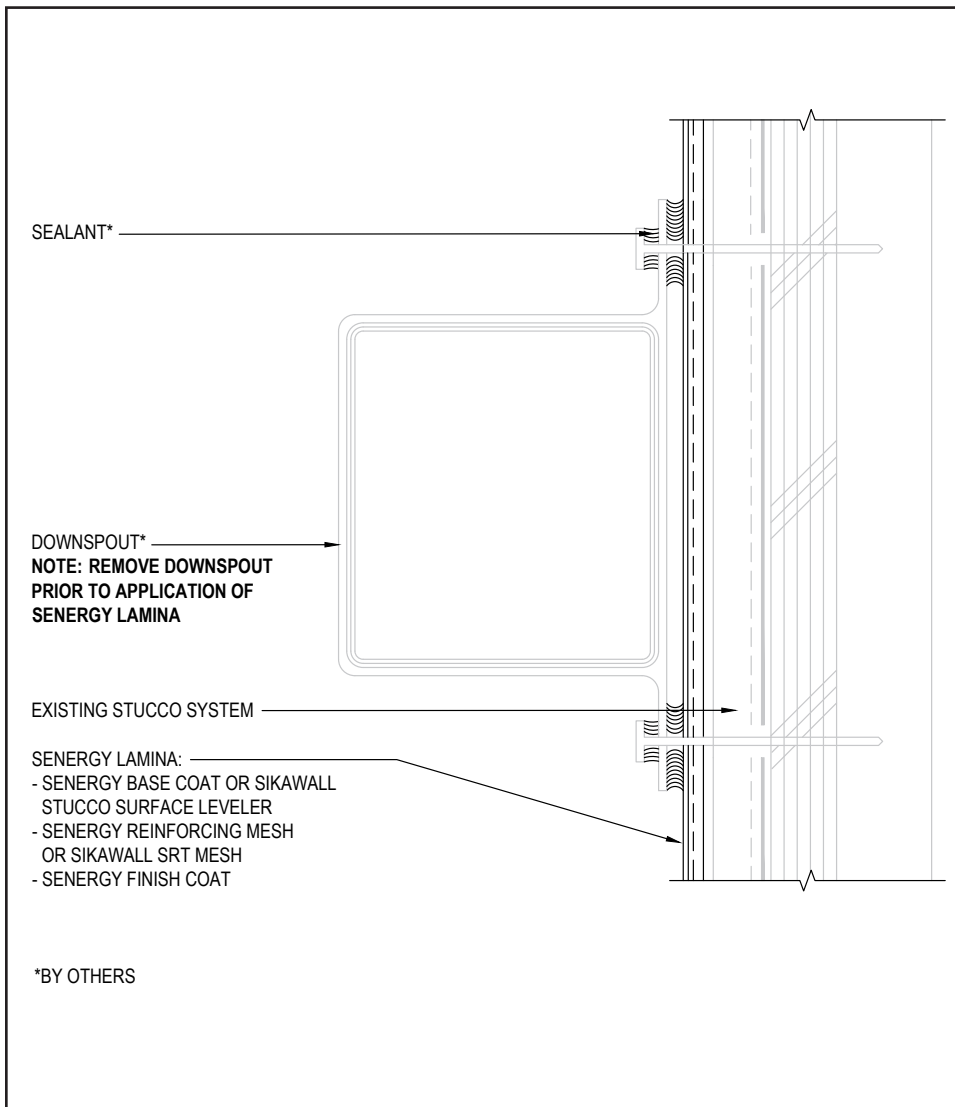
(*NOTE: BY OTHERS)

The details within are the latest recommendations and are represented in good faith by Sika Corporation US (hereinafter Sika). The details are subject to change without notice. Sika accepts no liability for the end use of the details. For conditions not shown, consult Sika for review of specific details.

- Install Sika materials in accordance with current installation instructions.
- Unsatisfactory conditions shall be reported to the General Contractor and corrected before the application of Sika products.

Senergy Stucco Resurfacing System

TYPICAL DOWNSPOUT APPLICATION



12 0724

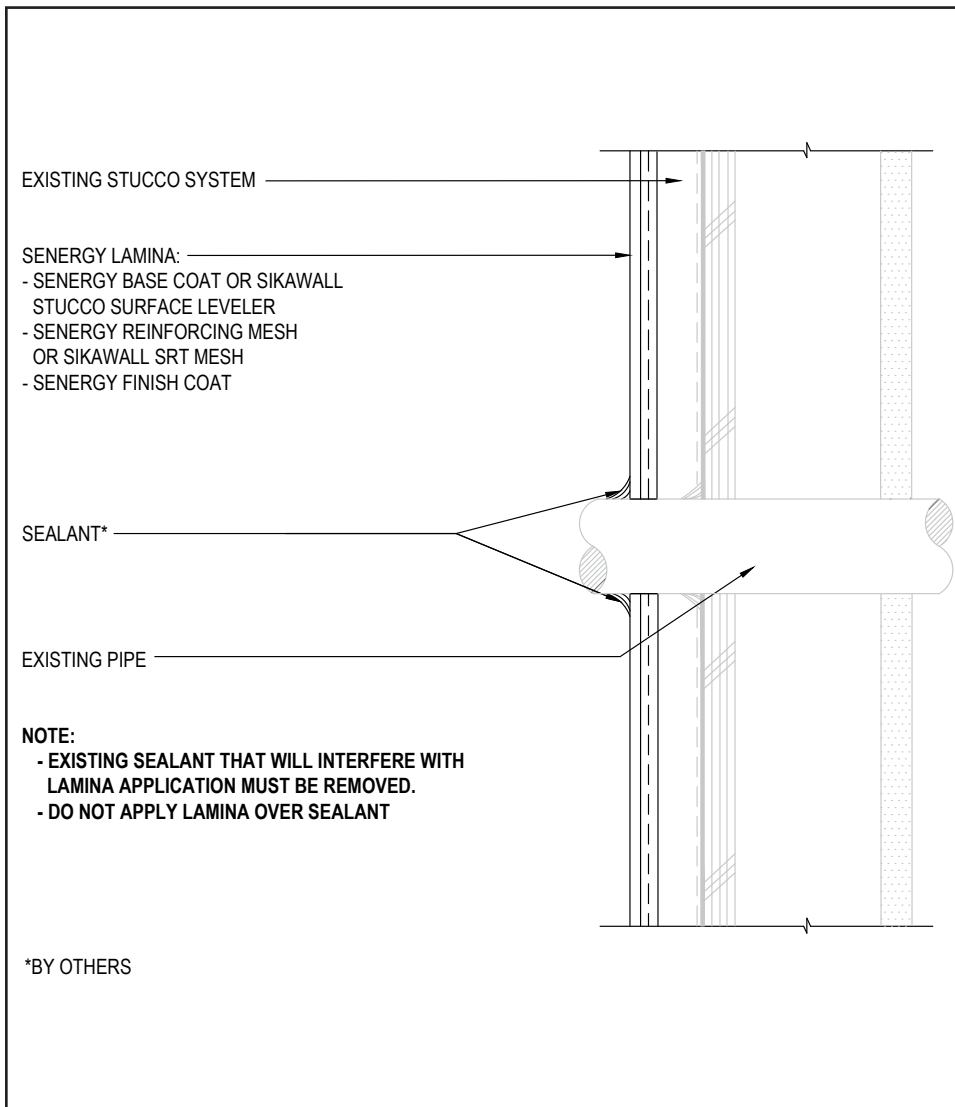
(*NOTE: BY OTHERS)

The details within are the latest recommendations and are represented in good faith by Sika Corporation US (hereinafter Sika). The details are subject to change without notice. Sika accepts no liability for the end use of the details. For conditions not shown, consult Sika for review of specific details.

- Install Sika materials in accordance with current installation instructions.
- Unsatisfactory conditions shall be reported to the General Contractor and corrected before the application of Sika products.

Senergy Stucco Resurfacing System

TYPICAL PIPE PENETRATION



13 0724

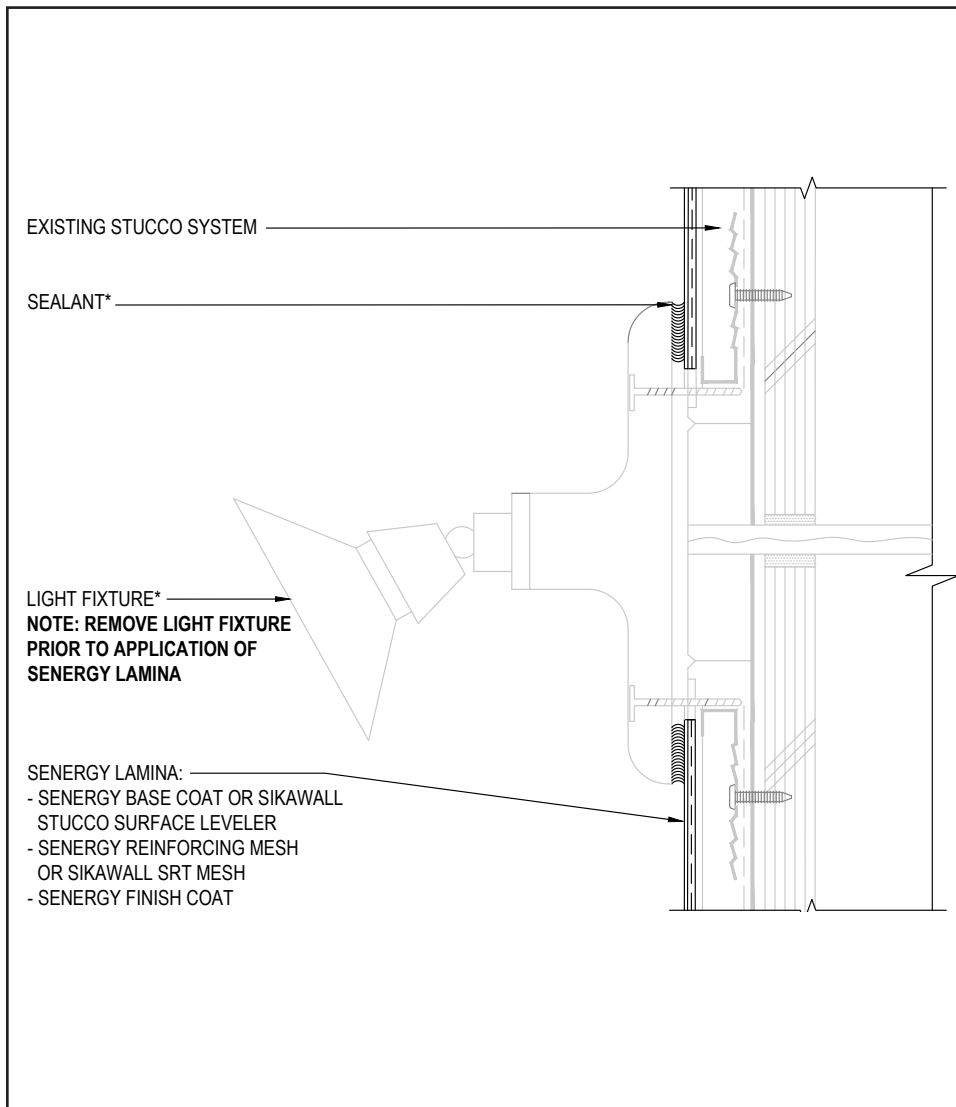
(*NOTE: BY OTHERS)

The details within are the latest recommendations and are represented in good faith by Sika Corporation US (hereinafter Sika). The details are subject to change without notice. Sika accepts no liability for the end use of the details. For conditions not shown, consult Sika for review of specific details.

- Install Sika materials in accordance with current installation instructions.
- Unsatisfactory conditions shall be reported to the General Contractor and corrected before the application of Sika products.

Senergy Stucco Resurfacing System

TYPICAL LIGHT FIXTURE



14 0724

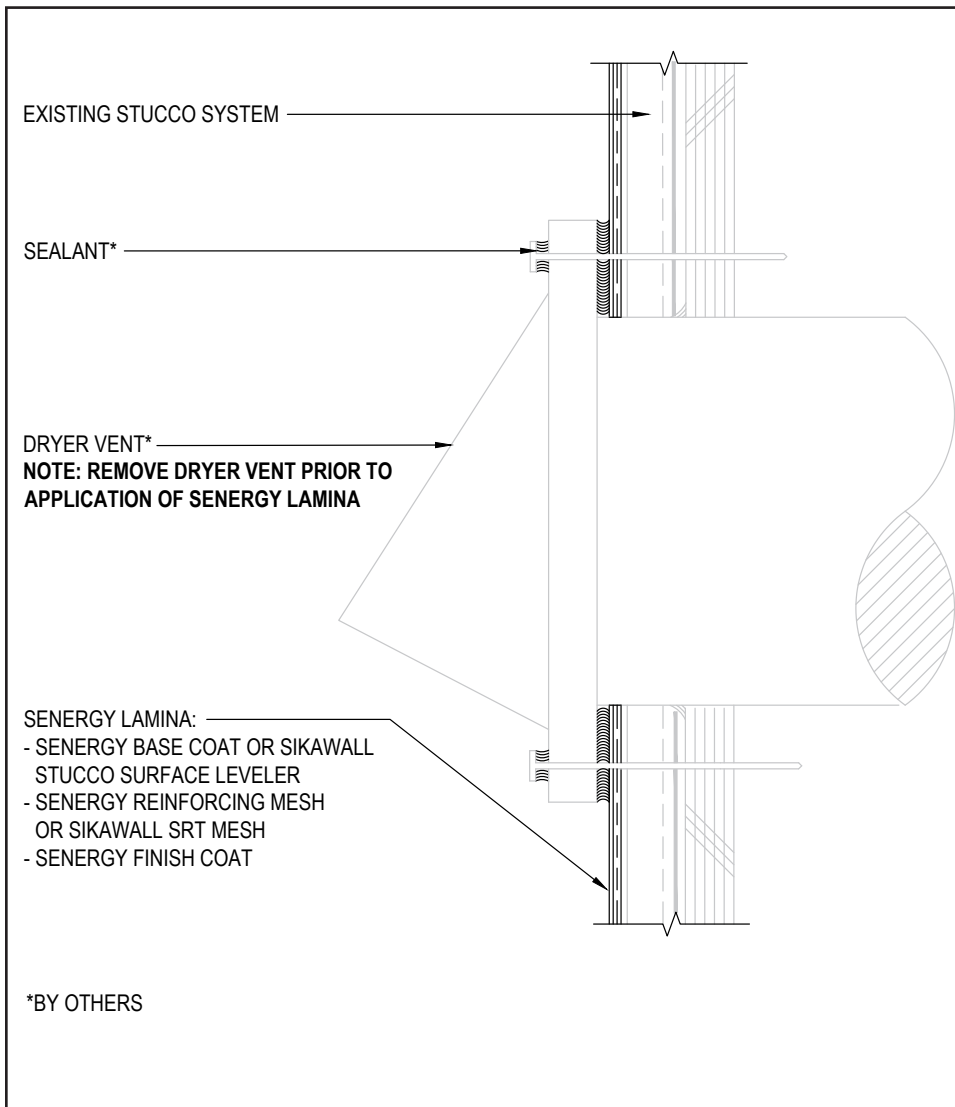
(*NOTE: BY OTHERS)

The details within are the latest recommendations and are represented in good faith by Sika Corporation US (hereinafter Sika). The details are subject to change without notice. Sika accepts no liability for the end use of the details. For conditions not shown, consult Sika for review of specific details.

- Install Sika materials in accordance with current installation instructions.
- Unsatisfactory conditions shall be reported to the General Contractor and corrected before the application of Sika products.

Senergy Stucco Resurfacing System

TYPICAL DRYER VENT



15 0724

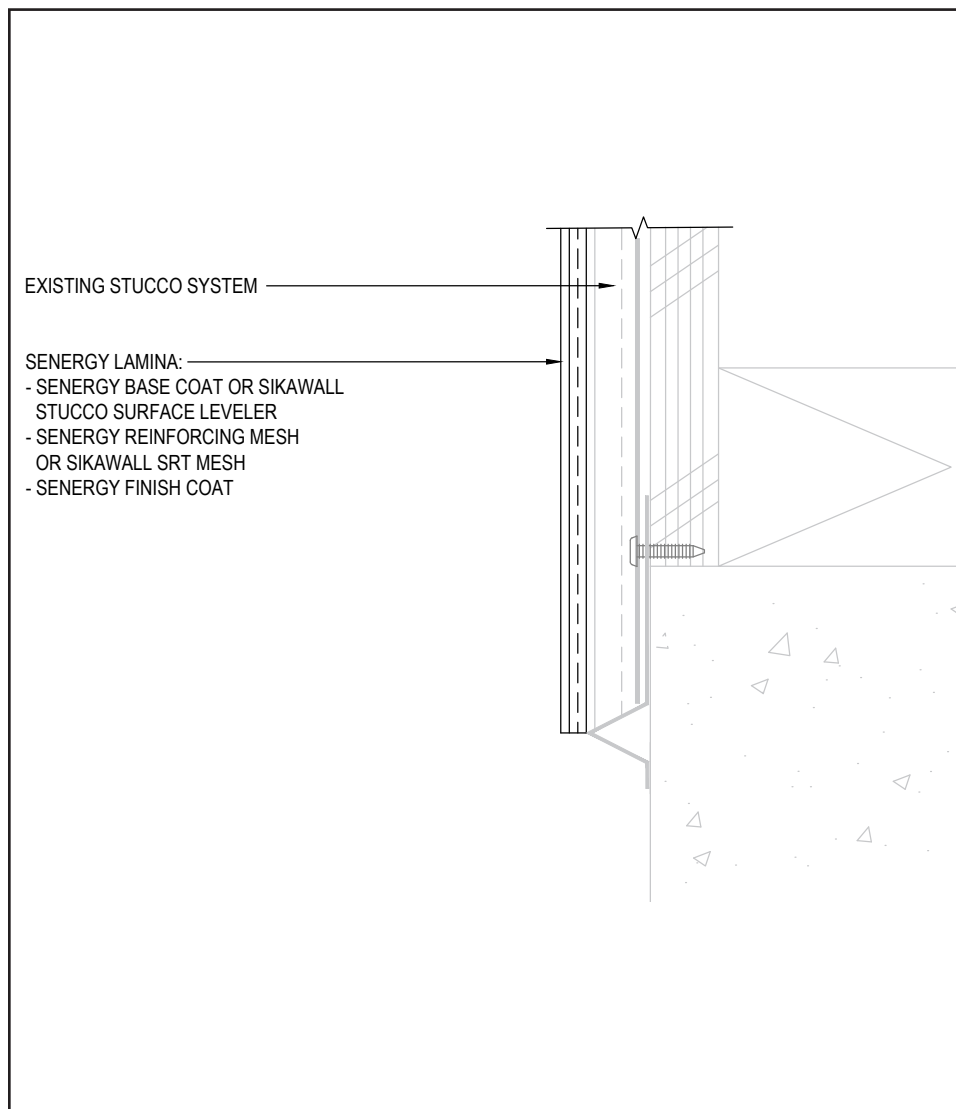
(*NOTE: BY OTHERS)

The details within are the latest recommendations and are represented in good faith by Sika Corporation US (hereinafter Sika). The details are subject to change without notice. Sika accepts no liability for the end use of the details. For conditions not shown, consult Sika for review of specific details.

- Install Sika materials in accordance with current installation instructions.
- Unsatisfactory conditions shall be reported to the General Contractor and corrected before the application of Sika products.

Senergy Stucco Resurfacing System

TYPICAL TERMINATION AT FOUNDATION



16 0724

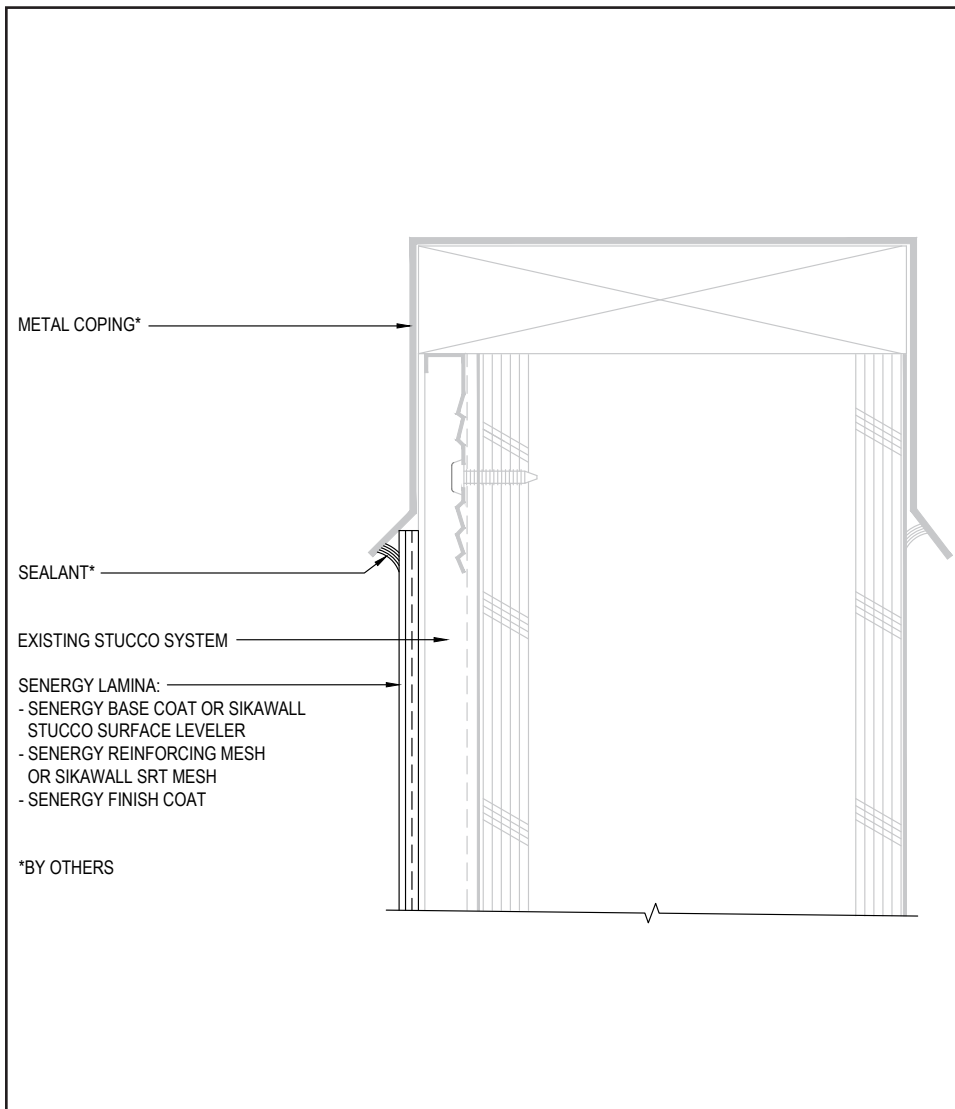
(*NOTE: BY OTHERS)

The details within are the latest recommendations and are represented in good faith by Sika Corporation US (hereinafter Sika). The details are subject to change without notice. Sika accepts no liability for the end use of the details. For conditions not shown, consult Sika for review of specific details.

- Install Sika materials in accordance with current installation instructions.
- Unsatisfactory conditions shall be reported to the General Contractor and corrected before the application of Sika products.

Senergy Stucco Resurfacing System

TYPICAL METAL COPING



17 0724

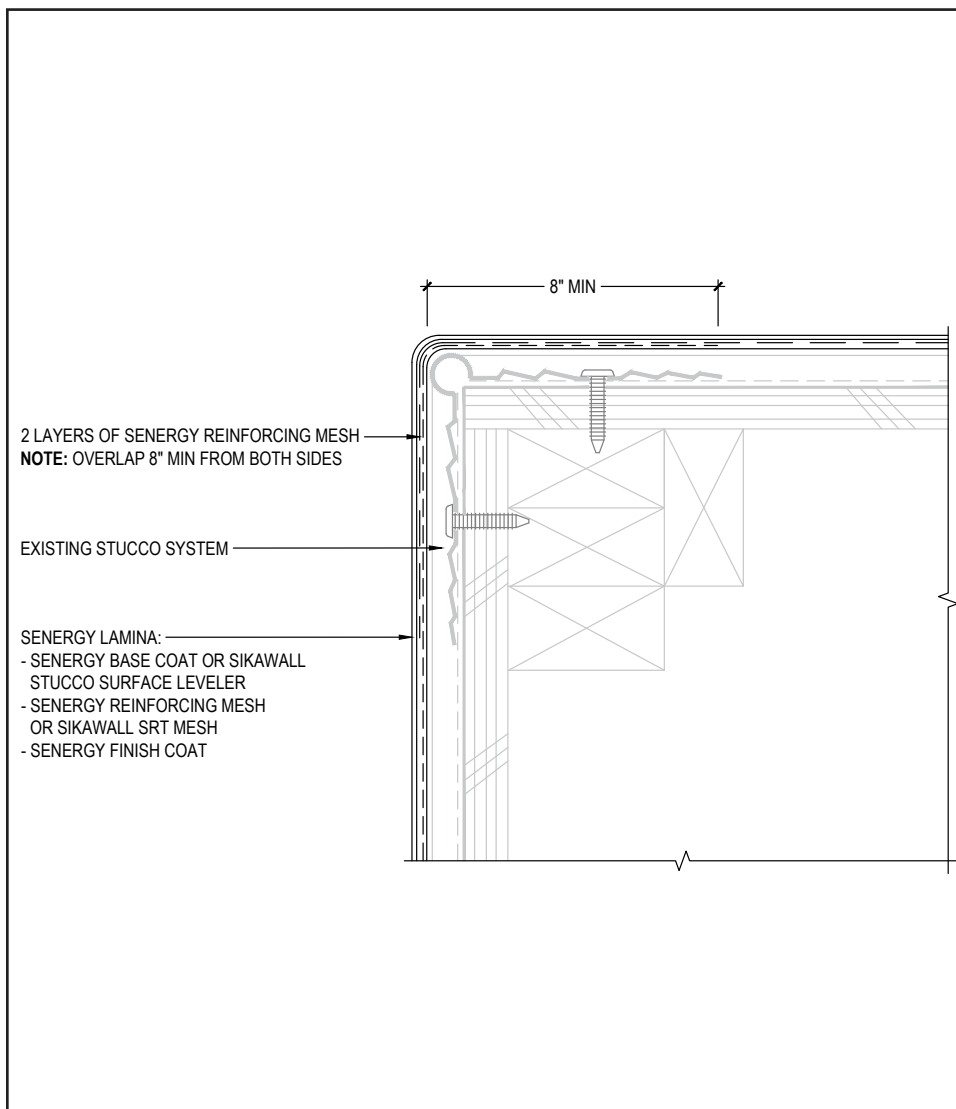
(*NOTE: BY OTHERS)

The details within are the latest recommendations and are represented in good faith by Sika Corporation US (hereinafter Sika). The details are subject to change without notice. Sika accepts no liability for the end use of the details. For conditions not shown, consult Sika for review of specific details.

- Install Sika materials in accordance with current installation instructions.
- Unsatisfactory conditions shall be reported to the General Contractor and corrected before the application of Sika products.

Senergy Stucco Resurfacing System

TYPICAL CORNER BEAD



18 0724

(*NOTE: BY OTHERS)

The details within are the latest recommendations and are represented in good faith by Sika Corporation US (hereinafter Sika). The details are subject to change without notice. Sika accepts no liability for the end use of the details. For conditions not shown, consult Sika for review of specific details.

- Install Sika materials in accordance with current installation instructions.
- Unsatisfactory conditions shall be reported to the General Contractor and corrected before the application of Sika products.



LIMITED WARRANTY NOTICE

Prior to each use of any product of Sika Corporation, its subsidiaries or affiliates ("SIKA"), the user must always read and follow the warnings and instructions on the product's most current product label, Product Data Sheet and Safety Data Sheet which are available at usa.sika.com/senenergy or by calling our Technical Service Department at +1 (800) 589-1336.

Nothing contained in any SIKA literature or materials relieves the user of the obligation to read and follow the warnings and instructions for each SIKA product as set forth in the current product label, Product Data Sheet and Safety Data Sheet prior to use of the SIKA product.

SIKA warrants this product for one year from date of installation to be free from manufacturing defects and to meet the technical properties on the current Product Data Sheet if used as directed within the product's shelf life. User determines suitability of product for intended use and assumes all risks. User's and/or buyer's sole remedy shall be limited to the purchase price or replacement of this product exclusive of any labor costs. NO OTHER WARRANTIES EXPRESS OR IMPLIED SHALL APPLY INCLUDING ANY WARRANTY OF MERCHANTABILITY OR FITNESS FOR A PARTICULAR PURPOSE. SIKA SHALL NOT BE LIABLE UNDER ANY LEGAL THEORY FOR SPECIAL OR CONSEQUENTIAL DAMAGES. SIKA SHALL NOT BE RESPONSIBLE FOR THE USE OF THIS PRODUCT IN A MANNER TO INFRINGE ON ANY PATENT OR ANY OTHER INTELLECTUAL PROPERTY RIGHTS HELD BY OTHERS. Sale of SIKA products are subject to the Terms and Conditions of Sale which are available at usa.sika.com.

For the most current version of this literature, please visit our website at usa.sika.com/senergy.

Sika Corporation

201 Polito Avenue
Lyndhurst, NJ 07071 USA
Customer Service +1 (800) 433-9517
Technical Service +1 (800) 589-1336
usa.sika.com/senergy

Rev July 2024

BUILDING TRUST

