

NOTE

SIKA HYFLEX®150 LM OR SIKAFLEX®11FC OR SIKAFLEX®1A IS SUITABLE TO FILL THE JOINT AS LONG AS THE SUBSTRATE IS SUITABLE. (REFERENCE PDS FOR SUBSTRATE REQUIREMENT)

SIKA HYFLEX®150 LM OR SIKAFLEX®11FC OR SIKAFLEX®1A

SIKAGARD® LIQUID AIR BARRIER

SHEATHING BOARD SUBSTRATE

SIKAGARD® LIQUID AIR BARRIER

SIKA MEMBRAN® 540 SELF-ADHERED TRANSITION TAPE AND PRIMER

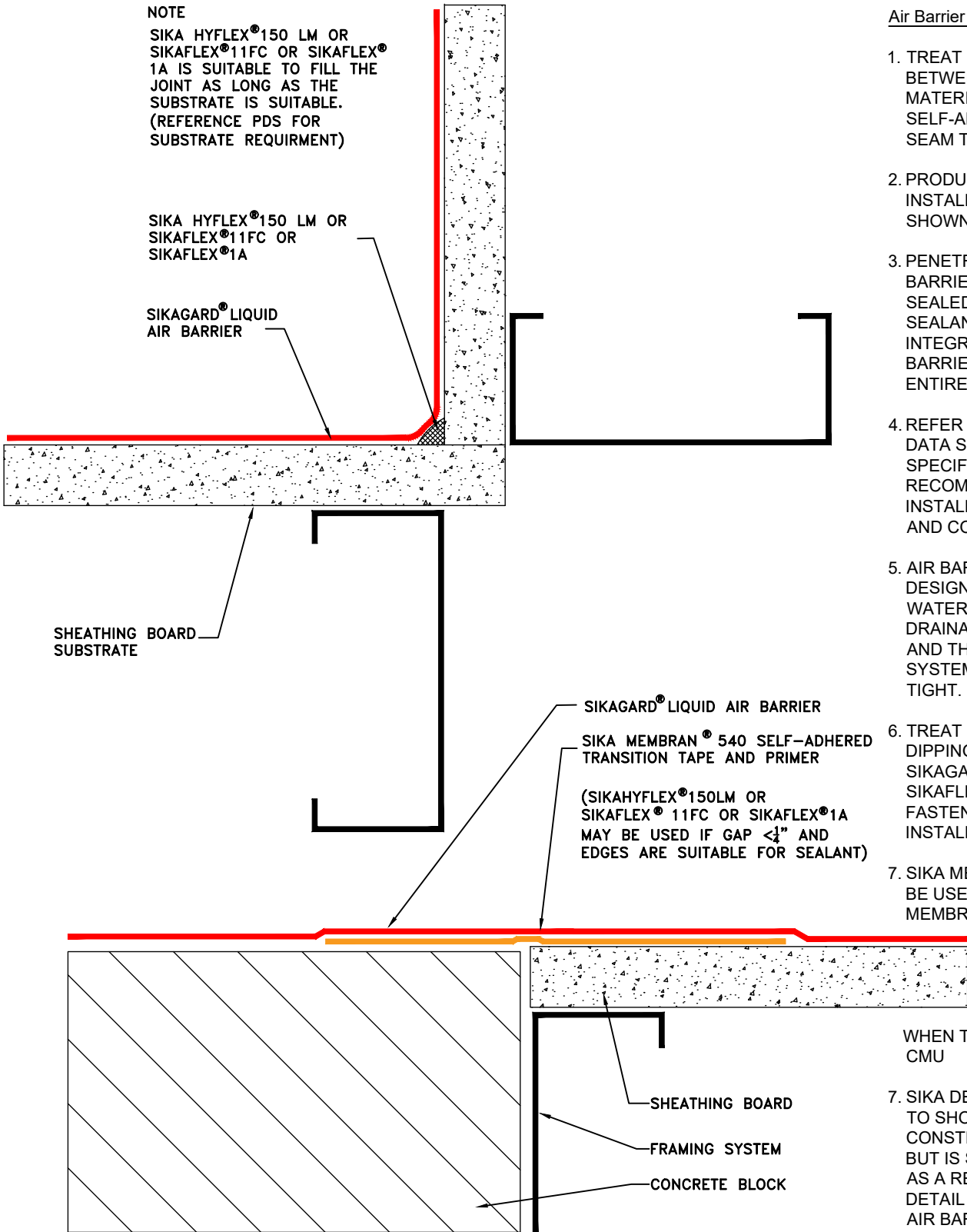
(SIKAHYFLEX®150LM OR SIKAFLEX® 11FC OR SIKAFLEX®1A MAY BE USED IF GAP $\frac{1}{4}$" AND EDGES ARE SUITABLE FOR SEALANT)

Air Barrier Notes:

1. TREAT CONNECTORS BETWEEN DISSIMILAR MATERIALS WITH SELF-ADHERED TRANSITION SEAM TAPE.
2. PRODUCTS SHOULD BE INSTALLED IN THE ORDER SHOWN ON THE DETAIL.
3. PENETRATIONS OF THE AIR BARRIER SYSTEM SHALL BE SEALED WITH SIKAFLEX SEALANT TO MAINTAIN THE INTEGRITY OF THE AIR BARRIER SYSTEM OVER THE ENTIRE SURFACE.
4. REFER TO SIKA TECHNICAL DATA SHEETS AND GUIDE SPECIFICATIONS FOR RECOMMENDED INSTALLATION PROCEDURES AND COMPATIBLE SEALANTS.
5. AIR BARRIERS ARE NOT DESIGNED FOR STANDING WATER. PROPER PITCH AND DRAINAGE ARE REQUIRED AND THE METAL PANEL SYSTEM SHOULD BE WATER TIGHT.
6. TREAT FASTENERS BY DIPPING THEM INTO SIKAGARD 535 OR APPLYING SIKAFLEX 11FC TO THE FASTENER PRIOR TO INSTALLATION.
7. SIKA MEMBRAN 540 PLUS MAY BE USED IN LIEU OF SIKA MEMBRAN 540 ESPECIALLY

WHEN THE SUBSTRATE IS CMU

7. SIKA DETAIL IS NOT INTENDED TO SHOW EXACT CONSTRUCTION DETAILING, BUT IS SIMPLY SHOWN HERE AS A REPRESENTATIVE TYPE DETAIL TO HIGHLIGHT THE AIR BARRIER AND TRANSITION MATERIALS.



1-800-933-SIKA (7452)
WWW.SIKAUSA.COM

JOB NAME:

DETAIL TITLE

**CHANGE IN PLANE
STATIC JOINT DETAIL**

SCALE:

N.T.S.

DATE:

03/30/2022

FILE NO.:

DRW. NO.:

AB-7

AS A MANUFACTURER OF CONSTRUCTION PRODUCTS, SIKA CORPORATION PROVIDES GENERIC DETAILS AS A GENERAL GUIDE FOR INFORMATION PURPOSES ONLY. THESE DETAILS ARE NOT INTENDED TO REPLACE SOUND ENGINEERING AND ARCHITECTURAL PRACTICES AND SHOULD NOT BE RELIED UPON FOR THAT PURPOSE. SIKA CORPORATION ASSUMES NO LIABILITY WITH RESPECT TO THE DESIGN OF THE SYSTEM. THE ARCHITECT, CONSULTANT AND/OR ENGINEER OR DESIGN PROFESSIONAL FOR A PARTICULAR PROJECT BEARS THE SOLE RESPONSIBILITY FOR THE DESIGN OF THE SYSTEM, FOR THE PREPARATION AND APPROVAL OF THE PROJECT SPECIFICATIONS, DETAILS AND SHOP DRAWINGS, AND FOR DETERMINING THEIR SUITABILITY FOR A PARTICULAR PROJECT OR APPLICATION. WHILE SIKA PROVIDES GENERAL INSTRUCTIONS FOR THE INSTALLATION OF ITS MATERIALS, THE MEANS AND METHODS USED BY THE CONTRACTOR FOR MATERIAL STORAGE, SUBSTRATE EVALUATION, SURFACE PREPARATION, AND THE INSTALLATION OF BOTH SIKA AND NON-SIKA MATERIALS ARE THE RESPONSIBILITY OF THE CONTRACTOR. THE CONTRACTOR MUST ALWAYS READ AND FOLLOW THE WARNINGS AND INSTRUCTIONS ON SIKA PRODUCT LABELS, TECHNICAL DATA SHEETS, AND MATERIAL SAFETY DATA SHEETS AVAILABLE AT WWW.SIKAUSA.COM. SIKA CORPORATION MAKES NO WARRANTY OF ANY KIND, EITHER EXPRESS OR IMPLIED, AS TO THE CONTENT OF THIS GUIDE DETAIL. SIKA SHALL NOT BE RESPONSIBLE UNDER ANY LEGAL THEORY TO ANY THIRD PARTY FOR ANY DIRECT OR CONSEQUENTIAL DAMAGES OF ANY KIND ARISING FROM THE USE OF THIS GUIDE DETAIL. ALL PRODUCTS AND SERVICES PROVIDED BY SIKA CORPORATION ARE SUBJECT TO ITS TERMS AND CONDITIONS OF SALE AVAILABLE AT WWW.SIKAUSA.COM.