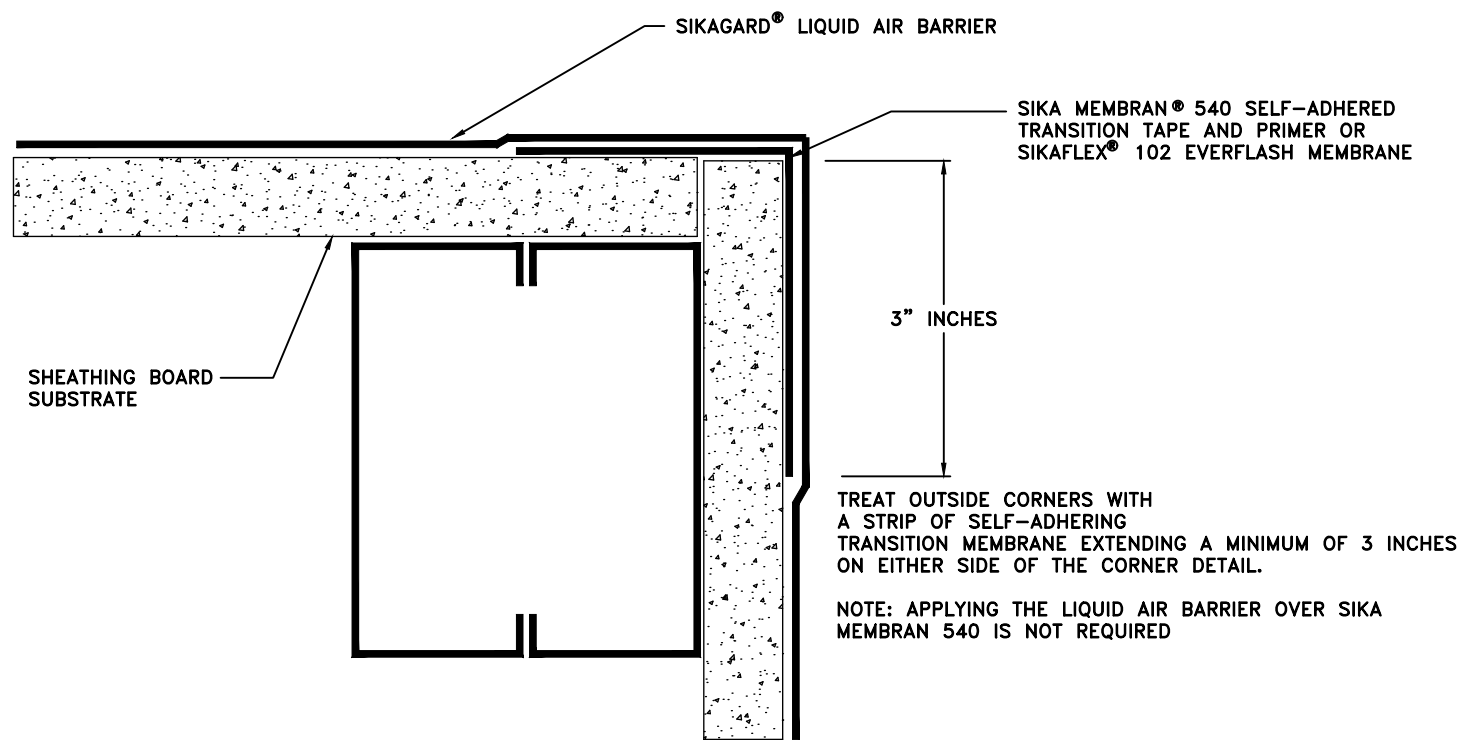


SHEATHING BOARD
SUBSTRATE

SIKAFLEX® 11FC OR SIKAFLEX®
102 EVERFLASH MEMBRANE

TREAT JOINTS BETWEEN SHEATHING BOARD
PANELS WITH A BEAD OF SIKAFLEX® 11FC SEALANT.
TREAT JOINTS GREATER THAN 1/4 INCH WIDE WITH A STRIP OF
SIKA MEMBRAN® 540 TAPE.

CORRECT DAMAGED AREAS OF MEMBRANE WITH LIBERAL APPLICATION OF SIKAGARD® LIQUID AIR BARRIER APPLIED OVER THE DAMAGED AREA.
CORRECT DAMAGE TO THE SUBSTRATE AS PER THE TECHNICAL DATA SHEET, SEE ACCEPTABLE SUBSTRATE CONDITIONS.



SIKAGARD® LIQUID AIR BARRIER

SIKA MEMBRAN® 540 SELF-ADHERED
TRANSITION TAPE AND PRIMER OR
SIKAFLEX® 102 EVERFLASH MEMBRANE

3" INCHES

SHEATHING BOARD
SUBSTRATE

TREAT OUTSIDE CORNERS WITH
A STRIP OF SELF-ADHERING
TRANSITION MEMBRANE EXTENDING A MINIMUM OF 3 INCHES
ON EITHER SIDE OF THE CORNER DETAIL.

NOTE: APPLYING THE LIQUID AIR BARRIER OVER SIKA
MEMBRAN 540 IS NOT REQUIRED



1-800-933-SIKA (7452)
WWW.SIKAUSA.COM

JOB NAME:			
DETAIL TITLE WALL JOINT TREATMENT DETAIL			
SCALE: N.T.S.	DATE: 10/14/2019	FILE NO.:	DRW. NO.: AB-7

AS A MANUFACTURER OF CONSTRUCTION PRODUCTS, SIKA CORPORATION PROVIDES GENERIC DETAILS AS A GENERAL GUIDE FOR INFORMATION PURPOSES ONLY. THESE DETAILS ARE NOT INTENDED TO REPLACE SOUND ENGINEERING AND ARCHITECTURAL PRACTICES AND SHOULD NOT BE RELIED UPON FOR THAT PURPOSE. SIKA CORPORATION ASSUMES NO LIABILITY WITH RESPECT TO THE DESIGN OF THE SYSTEM. THE ARCHITECT, CONSULTANT AND/OR ENGINEER OR DESIGN PROFESSIONAL FOR A PARTICULAR PROJECT BEARS THE SOLE RESPONSIBILITY FOR THE DESIGN OF THE SYSTEM, FOR THE PREPARATION AND APPROVAL OF THE PROJECT SPECIFICATIONS, DETAILS AND SHOP DRAWINGS, AND FOR DETERMINING THEIR SUITABILITY FOR A PARTICULAR PROJECT OR APPLICATION. WHILE SIKA PROVIDES GENERAL INSTRUCTIONS FOR THE INSTALLATION OF ITS MATERIALS, THE MEANS AND METHODS USED BY THE CONTRACTOR FOR MATERIAL STORAGE, SUBSTRATE EVALUATION, SURFACE PREPARATION, AND THE INSTALLATION OF BOTH SIKA AND NON-SIKA MATERIALS ARE THE RESPONSIBILITY OF THE CONTRACTOR. THE CONTRACTOR MUST ALWAYS READ AND FOLLOW THE WARNINGS AND INSTRUCTIONS ON SIKA PRODUCT LABELS, TECHNICAL DATA SHEETS, AND MATERIAL SAFETY DATA SHEETS AVAILABLE AT WWW.SIKAUSA.COM. SIKA CORPORATION MAKES NO WARRANTY OF ANY KIND, EITHER EXPRESS OR IMPLIED, AS TO THE CONTENT OF THIS GUIDE DETAIL. SIKA SHALL NOT BE RESPONSIBLE UNDER ANY LEGAL THEORY TO ANY THIRD PARTY FOR ANY DIRECT OR CONSEQUENTIAL DAMAGES OF ANY KIND ARISING FROM THE USE OF THIS GUIDE DETAIL. ALL PRODUCTS AND SERVICES PROVIDED BY SIKA CORPORATION ARE SUBJECT TO ITS TERMS AND CONDITIONS OF SALE AVAILABLE AT WWW.SIKAUSA.COM.