



COMMERCIAL JOINT SEALING SOLUTIONS

POLYURETHANE, SILICONE, HYBRID AND SPECIALTY SEALANTS

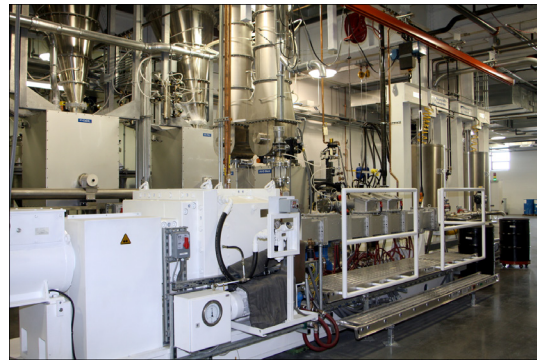
BUILDING TRUST



INNOVATION

Sika is an innovative leader with over 100 years of experience developing and supplying products to the construction industry across a wide range of application areas. This includes Sika's sealant product line which boasts a full range of polyurethane, silicone, silyl-terminated hybrid, polyurea, polysulfide and acrylic technologies.

These innovation efforts go beyond the products themselves and extend into all aspects of the business including production. Here they have the capability to increase quality and help deliver overall better products to the market. Sika continues to develop and invest in sealant production to find a solution for most every project.



LEADERSHIP



Sikaflex®-1a, the original innovative polyurethane based sealant, has paved the way for many other new product innovations. For example, Sikaflex®-15 LM is the first polyurethane sealant to achieve +100/-50% movement. Then, Sikaflex®-2c NS Arctic is the first ever sealant that can be used down to 15°F. Another notable sealant is Sika's hybrid polymer sealant innovation, SikaHyflex®-150 LM, with a performance that is second to none in the industry! Sika continues to invest in R&D efforts to find new innovative product solutions that will help owners, specifiers, and contractors complete projects in an efficient and productive way throughout the year.



Green Concrete 24h
Wet Concrete 1h

Another breakthrough innovation coming from Sika's Polyurethane R&D Group is the ability to apply sealants to green concrete 24 hours after pour and damp concrete just 60 minutes after a rainfall – helping owners and contractors meet critical project deadlines!



PRODUCT APPLICATIONS

1. Brick Joints
2. Metal Panel Joints
3. Natural Stone
4. Stucco
5. Curtain Wall
6. EIFS Joints
7. Window Perimeter
8. Wet Glazing
9. Park Deck Joints
10. Pre-Cast Joints
11. Store Front Window/Door
12. Highway Joints/Roadway
13. Side Walk Joints
14. Granite Facade Joints
15. Coping
16. Roof Top Joints
17. Tarmac Joints
18. Glass Facade Joints
19. Tilt Wall Joints
20. Bridge Joints
21. Paver Joints
22. Fully Immersed Joints
23. Butt Joint Glazing
24. Cast-in-Place Concrete Joints
25. Runway Joints
26. Interior Warehouse Control Joints

PRODUCT	APPLICATION
Sikaflex®-1a	1 7 10 11 14 15 16 21 22 24
Sikaflex®-15 LM	1 3 4 6 7 10 11 12 15 14 19 24
Sikaflex®-1c SL	13 17 21
Sikaflex® Textured Sealant	1 4 7 10 11 24
Sikaflex®-11 FC	1 7 10 11 15 22
Sikaflex®-2c NS EZ Mix	1 3 4 7 9 10 11 12 13 14 15 16 19 21 22 24
Sikaflex®-2c Ns EZ Mix+	1 3 4 7 9 10 11 12 13 14 15 16 19 21 22 24
Sikaflex®-2c SL	9 12 13 21 22 25
Sikaflex®-2c NS Arctic	1 3 7 9 10 11 14 15 16 24 11 19 24
Sikasil® WS-290/290 FPS	1 2 3 4 5 6 7 10 11 14 18 23 24
Sikasil® WS-295/295 FPS	1 2 3 4 5 6 7 8 10 11 14 15 16 18 23 24
Sikasil®-135	1 5 7 8 10 11 14 23 24
Sikasil® N-Plus	1 7 10 11 15 16 21 23 24
Sikasil®-728 SL	9 12 20 25
Sikasil®-728 NS	9 12 20 25
Sikasil®-728 RCS	12 20 25
SikaHyflex®-150 LM	1 3 4 6 7 10 11 19 24
SikaHyflex®-451 Pool	22
Sika® Loadflex-524 EZ	26
Sikadur®-58 CJR	26
Sika® Duoflex NS	1 10 22
Sika® Duoflex SL	22

ONE-COMPONENT POLYURETHANE

Sika's one component polyurethane sealants are the foundation to our sealant product line. Sikaflex®-1a has been on the market for over 50 years with a strong, proven performance for a variety of applications. Sika's polyurethane sealants are the go-to products for contractors, specifiers, and owners who want a trusted product solution with outstanding performance.

KEY PRODUCTS:

- Sikaflex®-1a**
General purpose, Class 35 sealant for expansion joints, window perimeters, transitions, gaps, cracks.
- Sikaflex®-15 LM**
Low-modulus, Class 100/50 sealant for high-movement joints.
- Sikaflex®-1c SL**
Self-leveling, Class 25 sealant for horizontal pavement joints and cracks.
- Sikaflex® Textured Sealant**
General purpose, textured, Class 25 sealant for joints, perimeters, cracks and gaps.
- Sikaflex®-11 FC**
General purpose, fast curing sealant / adhesive for bonding and filling cracks and gaps. Class 12.5.



	ASTM C920	Movement Capability	Consistency	Horizontal (H) Vertical (V)	Immersion Service	Potable Water NSF/ANSI 61	Fire Rated	Green/Damp Concrete	High Heel Traffic	Custom Colors	Available Packaging
Sikaflex®-1a	■	+/-35%	Non-Sag	H,V	■ ¹	■		■		■	
Sikaflex®-15 LM	■	+100/-50%	Non-Sag	V			■			■	
Sikaflex®-1c SL	■	+/-25%	Self-Leveling	H				■	■		
Sikaflex® Textured Sealant	■	+/-25%	Non-Sag	H,V						■	
Sikaflex®-11 FC	■	+/-12.5%	Non-Sag	H,V	■ ¹	■					

-Cartridge -Sausage -Pail -Drum 1- Primer required

TWO-COMPONENT POLYURETHANE

Sika's two component polyurethane sealants are a staple of the parking garage and tilt-wall markets. With the ability to cure in cold temperatures and cure faster than standard one-component sealant, the Sikaflex®-2c products are a premier choice for contractors and specifiers.

KEY PRODUCTS:

- Sikaflex®-2c NS EZ Mix**
Non-sag, Class 25 with capability of 50% movement when applied with hourglass shape and 2:1 width to depth ratio.
- Sikaflex®-2c NS EZ Mix+**
Non-sag, true Class 50 sealant. Can be applied to green concrete.
- Sikaflex®-2c SL**
Self-leveling, Class 25 with capability of 50% movement when applied with hourglass shape and 2:1 width to depth ratio.
- Sikaflex®-2c NS Arctic**
Non-sag, Class 25, for use in freezing conditions- can be mixed, gunned and cured down to 15°F.



	ASTM C920	Movement Capability	Consistency	Horizontal (H) Vertical (V)	Immersion Service	Potable Water NSF/ANSI 61	Fire Rated	High Heel Traffic	Universal Color Paks (51 Colors)	Available Packaging
Sikaflex®-2c NS EZ Mix	■	+/-50%	Non-Sag	H,V	■ ¹	■	■	■ ²	■ ³	1.5 Gal 3.0 Gal
Sikaflex®-2c NS EZ Mix+	■	+/-50%	Non-Sag	H,V	■ ¹			■ ²	■ ³	1.5 Gal 3.0 Gal
Sikaflex®-2c SL	■	+/-50%	Self-Leveling	H	■ ¹			■	■ ³	1.5 Gal 3.0 Gal
Sikaflex®-2c NS Arctic	■	+/-50%	Non-Sag	H,V					■ ³	1.5 Gal

-Pail 1-Primer required 2-With TG additive 3-Custom color matching available

BUILDING SILICONE

The Sikasil® line of products represents the highest level of silicone sealant performance. The Sikasil® technology is built around achieving primer-less adhesion to concrete along with outstanding adhesion to common non-porous surfaces. Sika's non-staining, high performance line of silicone sealants are used in applications from low-rise buildings to high-rise facade joints!

KEY PRODUCTS:

- Sikasil® WS-290**
Ultra-low modulus, Class 100/50, non-staining, neutral cure silicone building sealant.
- Sikasil® WS-295**
Low modulus, Class 50, non-staining, neutral cure silicone building sealant.
- Sikasil®-135**
Class 35, non-staining, neutral cure silicone building sealant.
- Sikasil®-N Plus**
Class 25, neutral cure building sealant.
- Sikasil®-GP**
Acetoxy silicone sealant.



	ASTM C920	Movement Capability	Consistency	Horizontal (H) Vertical (V)	Non-Staining	Wet Glazing	Universal Color Paks (51 Colors)	Batch Produced Custom Colors	Available Packaging
Sikasil® WS-295	■	+/-50%	Non-Sag	V	■	■		■	
Sikasil® WS-295 FPS	■	+/-50%	Non-Sag	V	■	■	■ ¹		
Sikasil® WS-290	■	+100/-50%	Non-Sag	V	■			■	
Sikasil® WS-290 FPS	■	+100/-50%	Non-Sag	V	■		■ ¹		
Sikasil®-135	■	+/-35%	Non-Sag	V	■			■	
Sikasil®-N Plus	■	+/-25%	Non-Sag	V				■	
Sikasil®-GP	■	-	Non-Sag	V					

-Cartridge -Sausage -Pail -Drum 1- Custom color available

HIGHWAY & BRIDGE SILICONE

Sika also offers a range of silicone sealants for DOT applications which allow for performance in a variety of project types. Bridge joints that require fast turn around generally use Sikasil®-728 RCS, a rapid curing two-component silicone. While standard highway pavement applications typically require the self-leveling Sikasil®-728 SL for easy application and high production for miles of highway!

KEY PRODUCTS:

- Sikasil®-728 SL**
Self-leveling, Class 100/50, neutral cure silicone sealant.
- Sikasil®-728 NS**
Non-sag, Class 100/50, neutral cure silicone sealant.
- Sikasil®-728 RCS**
Self-leveling, Class 100/50, rapid curing sealant.



	ASTM C920	ASTM D5893	Movement Capability	Consistency	Horizontal (H) Vertical (V)	Rapid Cure	Colors	Available Packaging
Sikasil®-728 SL	■	■	+100/-50%	Non-Sag	H		Limestone Charcoal	
Sikasil®-728 NS	■	■	+100/-50%	Self-Leveling	V,H		Limestone Charcoal	
Sikasil®-728 RCS	■	■	+100/-50%	Self-Leveling	H	■	Limestone	

-Cartridge -Sausage -Pail -Drum

HYBRID

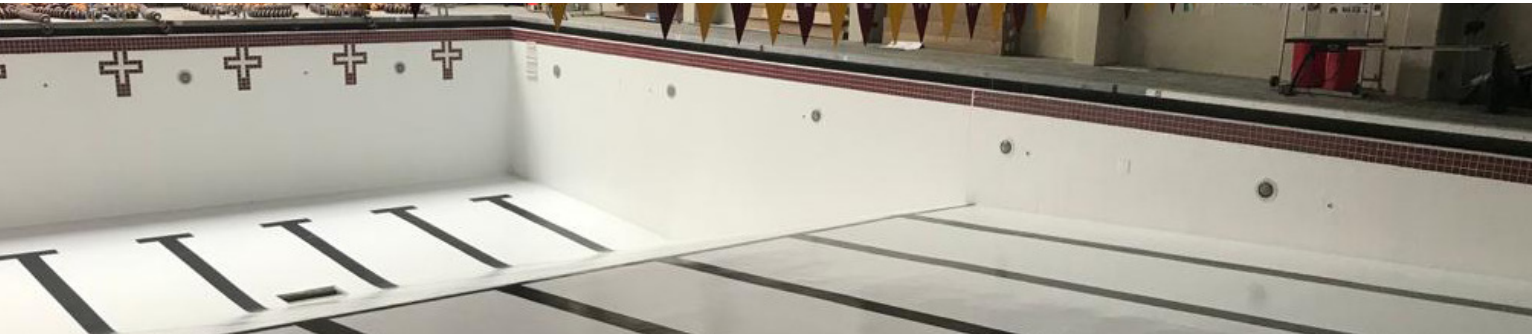
Sika's proprietary silyl-terminated hybrid sealants are the best in the business. By creating our own pre-polymers, we have the advantage for performance capabilities that cannot be obtained by using off the shelf chemistry!

KEY PRODUCTS:

SikaHyflex®-150 LM
Non-sag, Class 50, silyl-terminated hybrid sealant.

Sikaflex®-451 Pool
Non-sag, Class 50 sealant for use in chlorine treated swimming pools.

SikaHyflex®-407
Non-sag, Class 12.5, silyl-terminated hybrid sealant with special adhesion to low-surface tension materials and compatibility with most peel and stick flashing.



	ASTM C920	Movement Capability	Consistency	Horizontal (H) Vertical (V)	Paintable (wet-on-wet)	Custom Colors	Immersion Service	Available Packaging
SikaHyflex®-150 LM	■	+/-50%	Non-Sag	V	■ ²	■		
SikaHyflex®-407	■	+/-12.5%	Non-Sag	V				
SikaHyflex®-451 Pool	■	+/-50%	Non-Sag	V,H			■ ¹	

-Cartridge -Sausage 1- Primer required 2- Most common acrylic coatings

SPECIALTY

Sika's wide selection of specialty sealants include application areas such as control joints in vast warehouses or distribution center flooring which require the use of a polyurea fast cure control joint resin or epoxy control joint resin. Chemical facilities also need joint sealants for secondary containment areas which use polysulfide sealants for chemical resistance. Educational and penitentiary facilities are some other examples of environments that need specialty joint fillers that are hard enough to be pick proof. These specialty group of sealants are available to support a variety of application areas to meet most any project need!



KEY PRODUCTS:

Sika® Loadflex-524 EZ
Rapid curing, self-leveling, polyurea control joint resin – shave in under 5 minutes.

Sikadur®-58 CJR
Self-leveling, epoxy control joint resin.

Sika® Duoflex NS
Non-sag, chemical resistant polysulfide sealant.

Sika® Duoflex SL
Self-leveling, chemical resistant polysulfide sealant.

Sikadur®-31 Hi-Mod Gel
Non-sag, epoxy pick-proof joint resin.

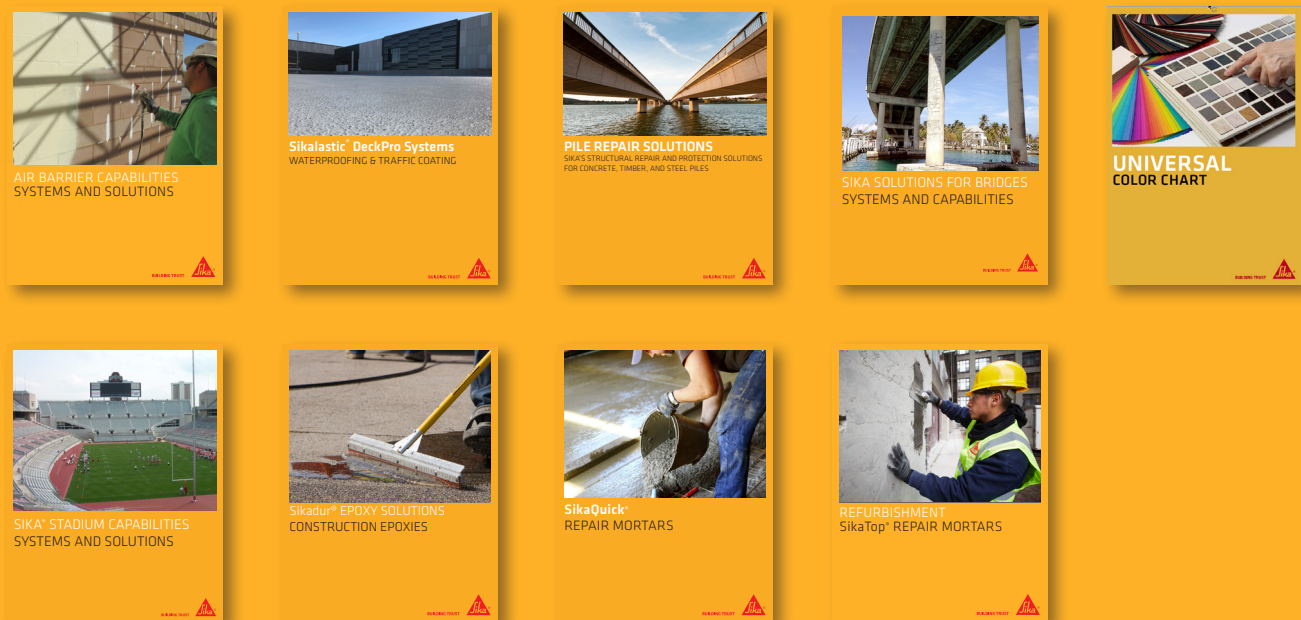
	ASTM C920	Movement Capability	Consistency	Horizontal (H) Vertical (V)	Chemical Resistant	Immersion Service	Control Joint	Pick Proof	Available Packaging
Sika® Loadflex-524 EZ		-	Self-Leveling	H			■		
Sikadur®-58 CJR		-	Self-Leveling	H			■		
Sika® Duoflex NS	■	+/-25%	Non-Sag	V,H	■	■ ¹			
Sika® Duoflex SL	■	+/-25%	Self-Leveling	H	■	■ ¹			
Sikadur®-31 Hi-Mod Gel		-	Non-Sag	V				■	

- Cartridge - Pail 1- Primer required

WE ARE SIKA

Sika is a specialty chemicals company with a leading position in the development and production of systems and products for bonding, sealing, damping, reinforcing and protecting in the building sector and the motor vehicle industry. Sika's product lines feature concrete admixtures, mortars, sealants and adhesives, structural strengthening systems, industrial flooring as well as roofing and waterproofing systems.

RELATED BROCHURES



Our most current General Sales Conditions shall apply. Please consult the Product Data Sheets prior to any use and processing.

©Sika Corporation / 09.2934.5/ 03/2022

SIKA CORPORATION
201 Polito Avenue
Lyndhurst, NJ 07071
USA

CONTACT
Phone 201-933-8800
Fax 201-933-6225
usa.sika.com

BUILDING TRUST

