

Senerflex Vulcan NC

Continuously insulated, water-drainage exterior wall cladding featuring noncombustible mineral wool insulation and Senergy air/water-resistive barrier

DESCRIPTION

Senerflex Vulcan NC is a continuously insulated, water-drainage wall cladding. The system utilizes ROCKWOOL Frontrock™ continuous exterior insulation and Senergy Senershield fluid-applied air/water-resistive barrier that provides continuous air and moisture protection.

USES

May be used in fire-resistance-rated construction and in any construction type, including IBC Types I through V, when installed in accordance with system instructions. For use on above grade vertical walls.

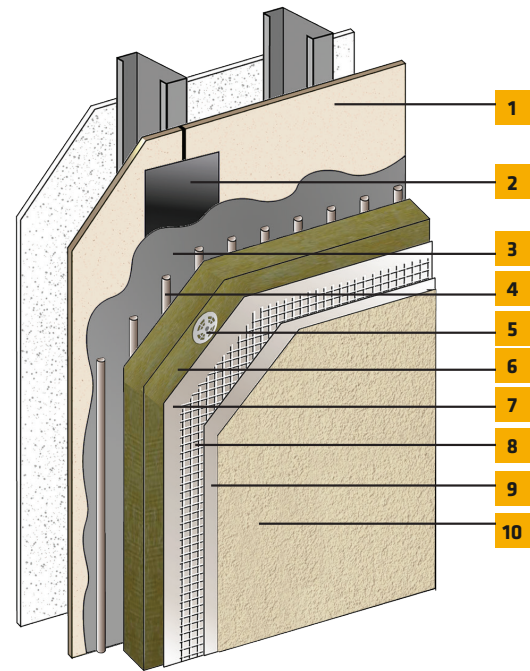
ACCEPTABLE SUBSTRATES

Poured concrete/unit masonry; ASTM C1177 type sheathings, including DensGlass™ exterior sheathing, DensElement (sheathing only), eXP™ sheathing, GlasRoc® sheathing, Securock™ glass-mat sheathing, Weather Defense™ Platinum sheathing, GreenGlass® sheathing; cement-boards (ASTM C1325 Type A Exterior) including PermaBase™ cement-board; untreated Exposure I or exterior plywood sheathing (grade C-D or better); untreated Exposure I OSB, Huber Zip (sheathing only); Fire Treated wood sheathing: Pyro-Guard® and Dricon® plywood and FlameBlock® OSB; gypsum sheathing (ASTM C79/ASTM C1396).

CODE COMPLIANCE

Document	Code Description
ICC-ESR 1878	Complies with IBC and IRC
ASTM E2568 / AC 235	Complies with requirements
ASTM E119	Does not detract from fire rating of base wall
ICC-ESR 2986 (Senershield R/-RS)	Air/water-resistive barrier*
NFPA 285/268	Meets requirements for use on fire-resistance-rated construction and in any construction type, including IBC Types I through V
ASTM E136	Insulation defined as noncombustible
ASTM C612	ROCKWOOL insulation is compliant for mineral fiber block and board thermal insulation

For testing results, please reference Senerflex Vulcan NC specification.



1. Acceptable Substrate*
2. Approved Joint Reinforcement: SikaWall MaxFlash, SikaWall Sheathing Fabric embedded in Senershield-R/-RS/-VB or SikaWall Flash Seal NP
3. Senershield-R/-RS/-VB
4. Senergy Adhesive
5. Mechanical Fastener**
6. ROCKWOOL Frontrock™*
7. Senergy Base Coat
8. Senergy Reinforcing Mesh
9. Senergy Base Coat
10. Senergy Finish Coat

*By Others
 **Requires the use of 9 fasteners per board; 4 through the insulation, 5 through the reinforced base coat. Refer to the Technical Bulletin; Senerflex Vulcan NC Installation Guide for full installation details.

* Senershield-R/-RS/-VB can be used behind all claddings where more than one wall system is specified, creating one continuous AWRB system. This is appropriate whenever Senergy Senerflex Vulcan NC is used with other cladding types on a multi-clad building.

Senerflex Vulcan NC

WARRANTY

12-Year Limited, Labor Material and Drainage.

MATERIAL SUBSTITUTION

Material substitution will adversely affect system performance and will void all warranty coverage unless approved in writing by Sika Facades.

ACCEPTABLE MINERAL WOOL

ROCKWOOL Fronrock™*

Insulation Type	Density	R-Value	Thickness Min	Thickness Max
Mono Density	8.5 lbs/ft ³	4 per inch	1.5"	4"
Dual Density	9.3 lbs/ft ³ outer layer 5.9 lbs/ft ³ inner layer	4 per inch	2.5"	4"

ASTM C612 Type IVA; non-combustible per ASTM E136; Flame Spread 0, Smoke Developed ≤ 15 per ASTM E84. Size 2' x 4' (0.6 m x 1.22 m)

For additional insulation requirements, please reference Senerflex Vulcan NC specification

*For full testing results refer to the Fronrock™ Technical Data Sheet. rockwool.com/products/fronrock

LIMITATIONS

- For use on above grade vertical walls only. System must terminate a minimum of 6" (152 mm) above grade.
- Not compatible with SikaWall MaxGrip Veneer Adhesive and adhered veneer.
- All products must be installed at minimum 40°F (4°C) ambient and substrate temperatures unless otherwise noted on specific Sika Product Data Sheets. Do not apply in ambient temperature greater than 100°F (38°C) or to surface temperature above 120°F (49°C)
- Multiple coats of base coat may be required to achieve a flat surface.
- Use of smooth/fine finish textures is not advised, however if desired to achieve design requirements, a large-scale mock-up is recommended.
- Requires the use of 9 fasteners per board.

LIMITED WARRANTY NOTICE

Prior to each use of any product of Sika Corporation, its subsidiaries or affiliates ("SIKA"), the user must always read and follow the warnings and instructions on the product's most current product label, Product Data Sheet and Safety Data Sheet which are available at usa.sika.com/senergy.com or by calling our Technical Service Department at +1 (800) 589-1336. Nothing contained in any SIKA literature or materials relieves the user of the obligation to read and follow the warnings and instructions for each SIKA product as set forth in the current product label, Product Data Sheet and Safety Data Sheet prior to use of the SIKA product.

SIKA warrants this product for one year from date of installation to be free from manufacturing defects and to meet the technical properties on the current Product Data Sheet if used as directed within the product's shelf life. User determines suitability of product for intended use and assumes all risks. User's and/or buyer's sole remedy shall be limited to the purchase price or replacement of this product exclusive of any labor costs. NO OTHER WARRANTIES EXPRESS OR IMPLIED SHALL APPLY INCLUDING ANY WARRANTY OF MERCHANTABILITY OR FITNESS FOR A PARTICULAR PURPOSE. SIKA SHALL NOT BE LIABLE UNDER ANY LEGAL THEORY FOR SPECIAL OR CONSEQUENTIAL DAMAGES. SIKA SHALL NOT BE RESPONSIBLE FOR THE USE OF THIS PRODUCT IN A MANNER TO INFRINGE ON ANY PATENT OR ANY OTHER INTELLECTUAL PROPERTY RIGHTS HELD BY OTHERS. Sale of SIKA products are subject to the Terms and Conditions of Sale which are available at <https://usa.sika.com/> or by calling +1 (800) 589-1336.

Sika Corporation
201 Polito Avenue
Lyndhurst, NJ 07071 USA
Customer Service +1 (800) 433-9517
Technical Service +1 (800) 589-1336
usa.sika.com/senergy

Rev May 2024

BUILDING TRUST

