

Senergy[®]



Senergy EIFS Resurfacing System

Typical 2D Details

BUILDING TRUST



Senergy EIFS Resurfacing System

Typical 2D Details

Table of Contents

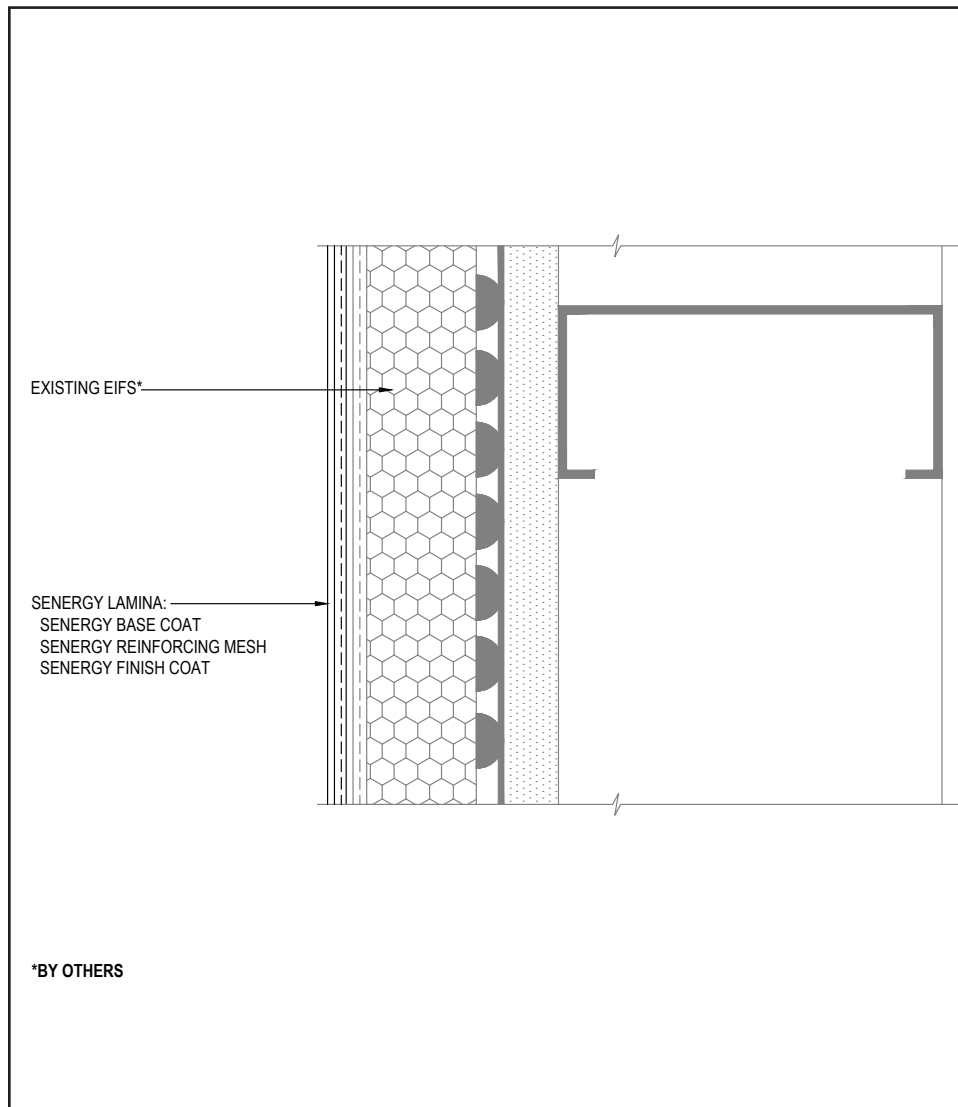
- | | |
|---------------------------|--|
| 1. Lamina Application | 12. Expansion Joint at Floor Line |
| 2. Aesthetic Groove | 13. Expansion Joint at Change in Substrate |
| 3. Window Head (Flush) | 14. Section at Fascia - Soffit |
| 4. Window Head (Recessed) | 15. Vertical Expansion Joint |
| 5. Window Jamb (Flush) | 16. Pipe Penetration |
| 6. Window Jamb (Recessed) | 17. Outside Corner |
| 7. Window Sill (Flush) | 18. Light Fixture |
| 8. Window Sill (Recessed) | 19. Termination at Foundation |
| 9. Roof Edge Flashing | 20. Termination at Foundation (Flush) |
| 10. Metal Coping | 21. Kick-Out Flashing |
| 11. EPS Parapet Cap | |

Notes:

- **The details within are the latest recommendations and are represent in good faith by Sika Corporation US (hereinafter Sika). The details are subject to change without notice. Sika accepts no liability for the end use of the details. For conditions not shown, consult Sika for review of specific details.**
- **Install Sika materials in accordance with current installation instructions.**
- **Unsatisfactory conditions shall be reported to the General Contractor and corrected before the application of Sika products.**

Senergy EIFS Resurfacing System

TYPICAL LAMINA APPLICATION



- Prior to resurfacing, consideration should be given to windows and other penetrations. Replacing sealant, flashing and/or inferior or damaged windows should be completed as part of a major resurfacing project.
- Perform any repairs required beyond the scope of resurfacing. Please reference Technical Bulletins Procedure for Repairing EIFS and Procedure for Sealant Joint Maintenance and Repair in EIFS for more information.
- Perform bond testing to confirm base coat adhesion. Please reference Technical Bulletin Basics of Conducting Field Adhesion Testing for more information. Apply SikaWall Surface Stabilizer WB to existing paint or acrylic finish as determined by adhesion testing.

01 0524

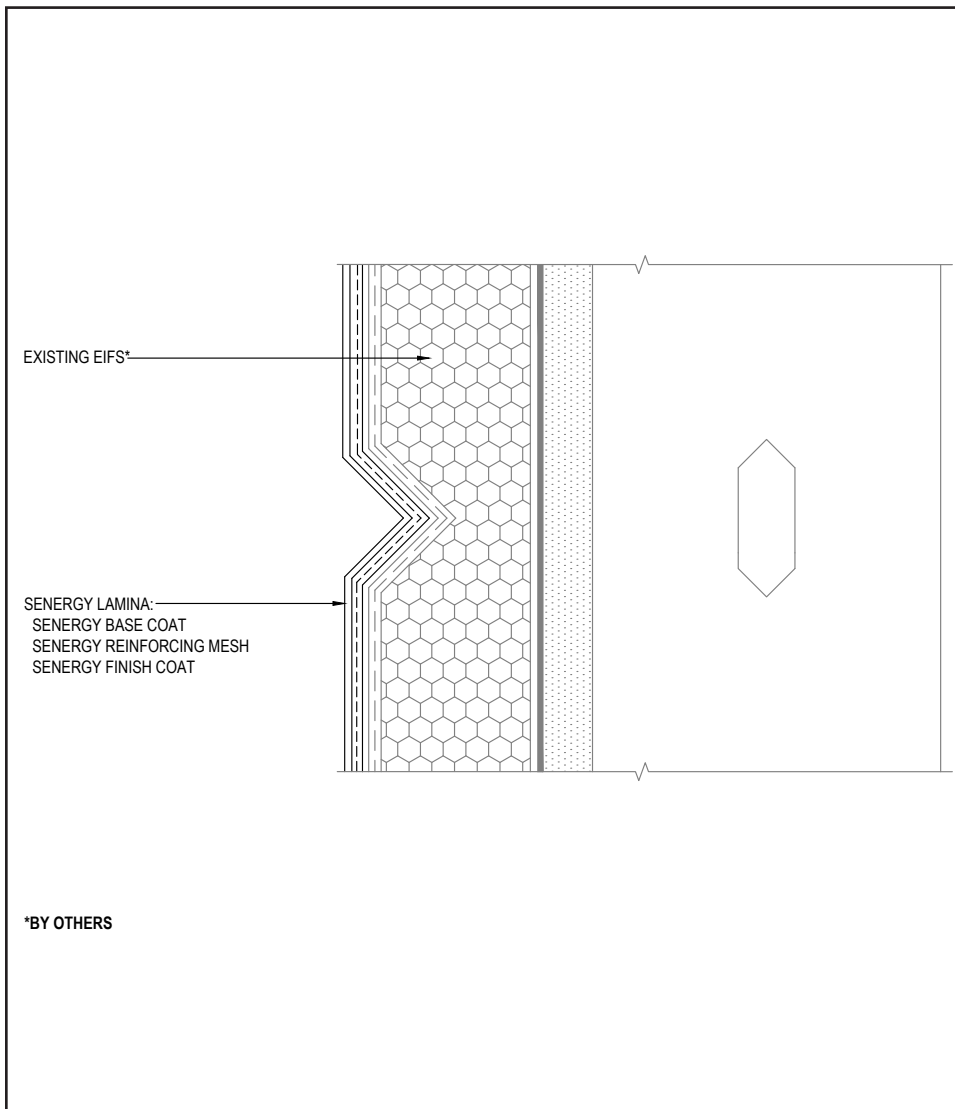
(*NOTE: BY OTHERS)

The details within are the latest recommendations and are represented in good faith by Sika Corporation US (hereinafter Sika). The details are subject to change without notice. Sika accepts no liability for the end use of the details. For conditions not shown, consult Sika for review of specific details.

- Install Sika materials in accordance with current installation instructions.
- Unsatisfactory conditions shall be reported to the General Contractor and corrected before the application of Sika products.

Senergy EIFS Resurfacing System

TYPICAL AESTHETIC GROOVE



- Reinforcing mesh shall be continuous and care shall be taken to ensure reinforcing mesh is not cut during base coat application.

02 0524

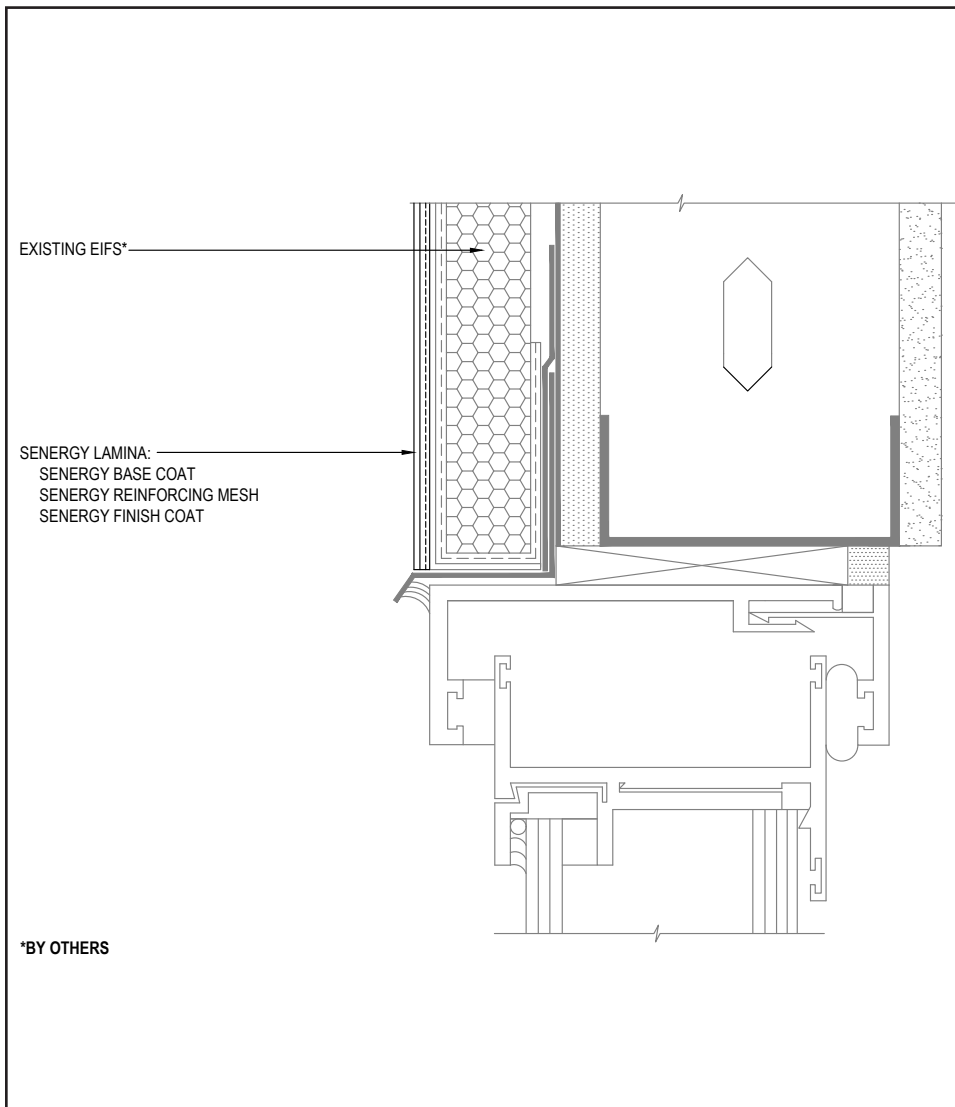
(*NOTE: BY OTHERS)

The details within are the latest recommendations and are represented in good faith by Sika Corporation US (hereinafter Sika). The details are subject to change without notice. Sika accepts no liability for the end use of the details. For conditions not shown, consult Sika for review of specific details.

- Install Sika materials in accordance with current installation instructions.
- Unsatisfactory conditions shall be reported to the General Contractor and corrected before the application of Sika products.

Senergy EIFS Resurfacing System

TYPICAL WINDOW HEAD (FLUSH)



03 0524

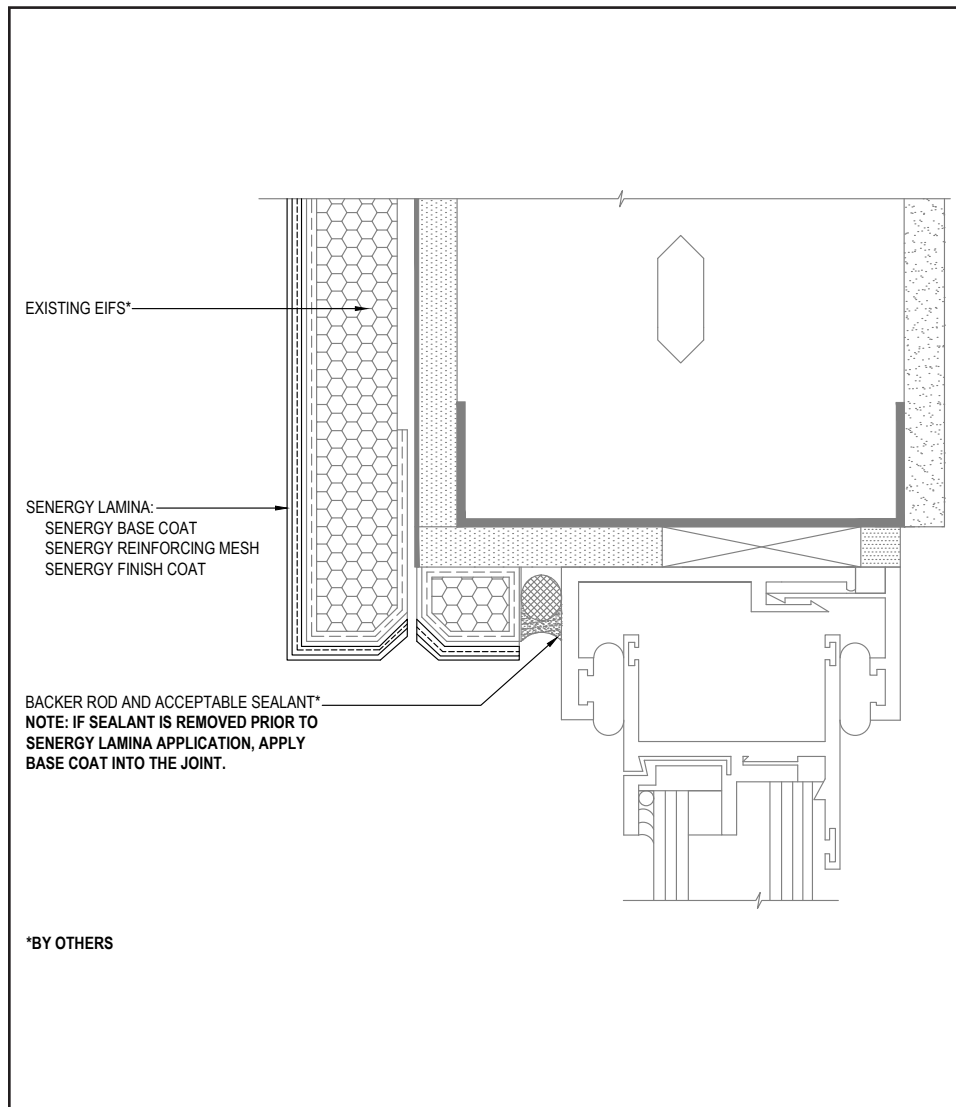
(*NOTE: BY OTHERS)

The details within are the latest recommendations and are represented in good faith by Sika Corporation US (hereinafter Sika). The details are subject to change without notice. Sika accepts no liability for the end use of the details. For conditions not shown, consult Sika for review of specific details.

- Install Sika materials in accordance with current installation instructions.
- Unsatisfactory conditions shall be reported to the General Contractor and corrected before the application of Sika products.

Senergy EIFS Resurfacing System

TYPICAL WINDOW HEAD (RECESSED)



- Do not apply finish to areas that will receive sealant.
- If sealant is removed prior to Senergy Lamina application, apply base coat into the joint.
- Use Sikaflex HY 100 Sikaflex HY 150 with Sikaflex Primer 173 or other acceptable sealants. Reference *Acceptable Sealants for use with Senergy Wall Systems* Technical Bulletin for a list of sealants.

04 0524

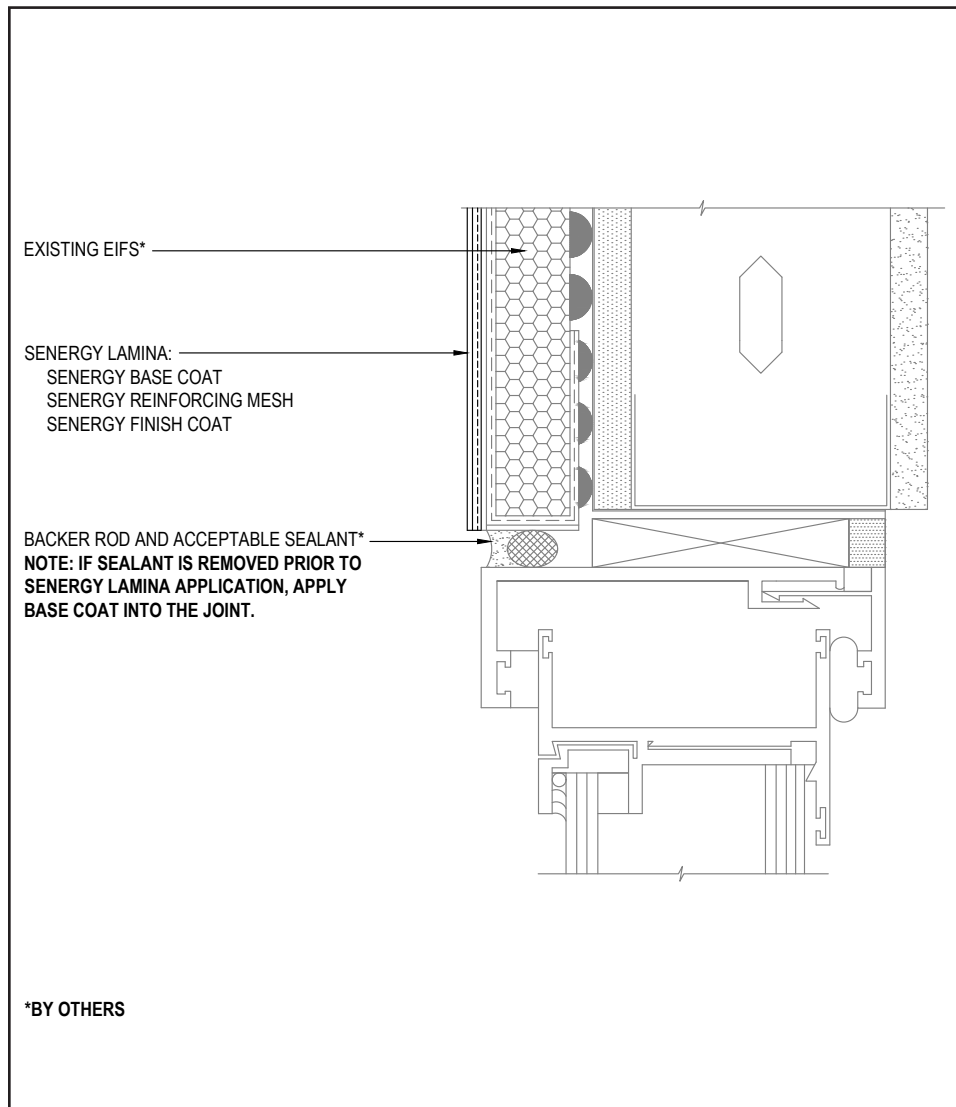
(*NOTE: BY OTHERS)

The details within are the latest recommendations and are represented in good faith by Sika Corporation US (hereinafter Sika). The details are subject to change without notice. Sika accepts no liability for the end use of the details. For conditions not shown, consult Sika for review of specific details.

- Install Sika materials in accordance with current installation instructions.
- Unsatisfactory conditions shall be reported to the General Contractor and corrected before the application of Sika products.

Senergy EIFS Resurfacing System

TYPICAL WINDOW JAMB (FLUSH)



- Do not apply finish to areas that will receive sealant.
- If sealant is removed prior to Senergy Lamina application, apply base coat into the joint.
- Use Sikaflex HY 100 Sikaflex HY 150 with Sikaflex Primer 173 or other acceptable sealants. Reference *Acceptable Sealants for use with Senergy Wall Systems Technical Bulletin* for a list of sealants.

05 0524

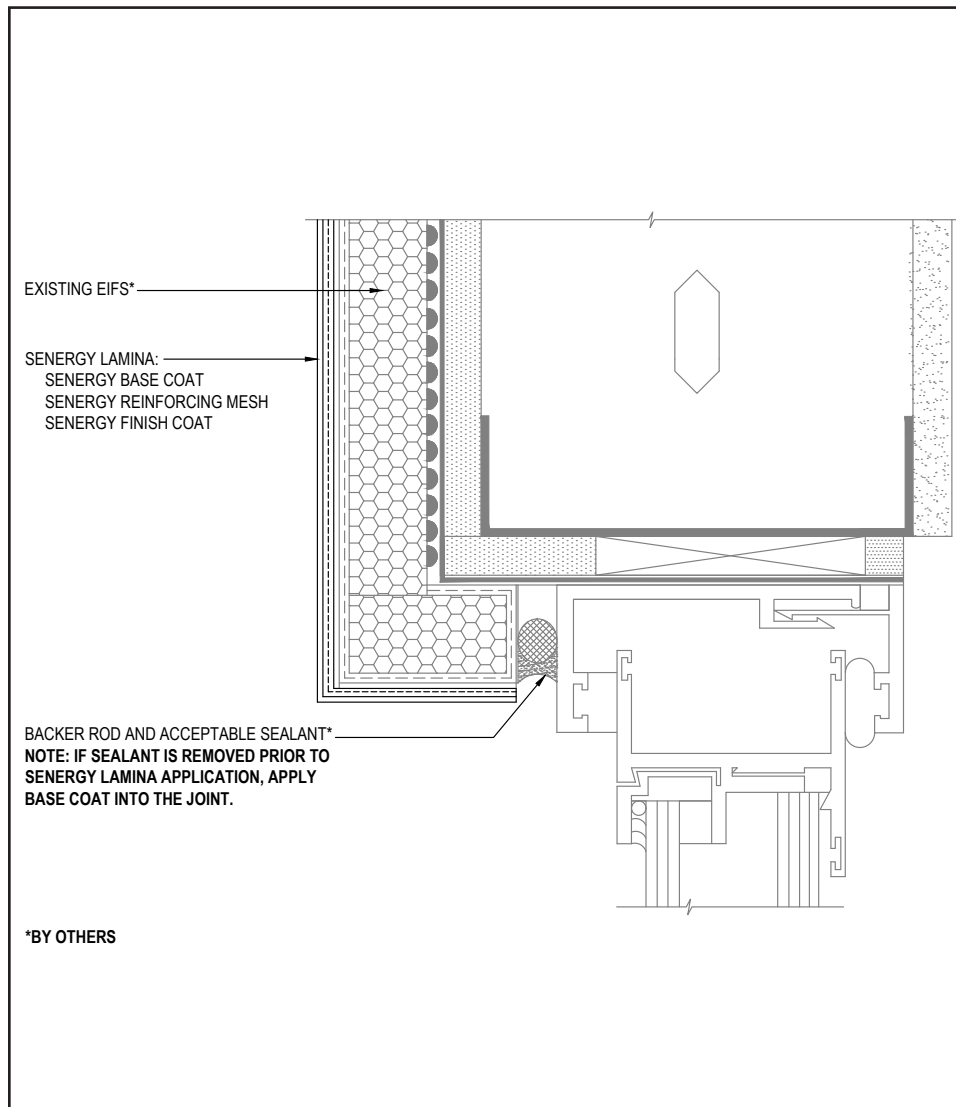
(*NOTE: BY OTHERS)

The details within are the latest recommendations and are represented in good faith by Sika Corporation US (hereinafter Sika). The details are subject to change without notice. Sika accepts no liability for the end use of the details. For conditions not shown, consult Sika for review of specific details.

- Install Sika materials in accordance with current installation instructions.
- Unsatisfactory conditions shall be reported to the General Contractor and corrected before the application of Sika products.

Senergy EIFS Resurfacing System

TYPICAL WINDOW JAMB (RECESSED)



- Do not apply finish to areas that will receive sealant.
- If sealant is removed prior to Senergy Lamina application, apply base coat into the joint.
- Use Sikaflex HY 100 Sikaflex HY 150 with Sikaflex Primer 173 or other acceptable sealants. Reference *Acceptable Sealants for use with Senergy Wall Systems* Technical Bulletin for a list of sealants.

*BY OTHERS

06 0524

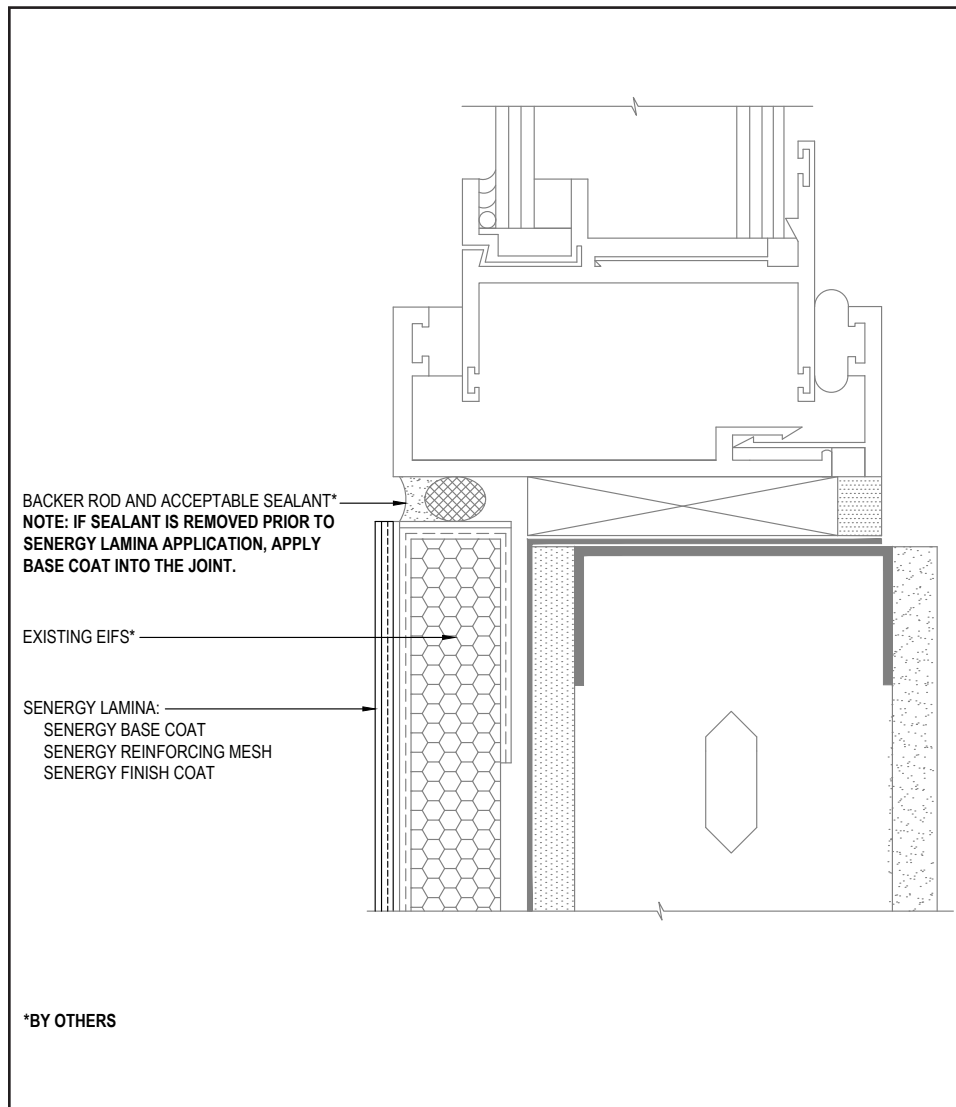
(*NOTE: BY OTHERS)

The details within are the latest recommendations and are represented in good faith by Sika Corporation US (hereinafter Sika). The details are subject to change without notice. Sika accepts no liability for the end use of the details. For conditions not shown, consult Sika for review of specific details.

- Install Sika materials in accordance with current installation instructions.
- Unsatisfactory conditions shall be reported to the General Contractor and corrected before the application of Sika products.

Senergy EIFS Resurfacing System

TYPICAL WINDOW SILL (FLUSH)



- Do not apply finish to areas that will receive sealant.
- If sealant is removed prior to Senergy Lamina application, apply base coat into the joint.
- Use Sikaflex HY 100 Sikaflex HY 150 with Sikaflex Primer 173 or other acceptable sealants. Reference *Acceptable Sealants for use with Senergy Wall Systems* Technical Bulletin for a list of sealants.

07 0524

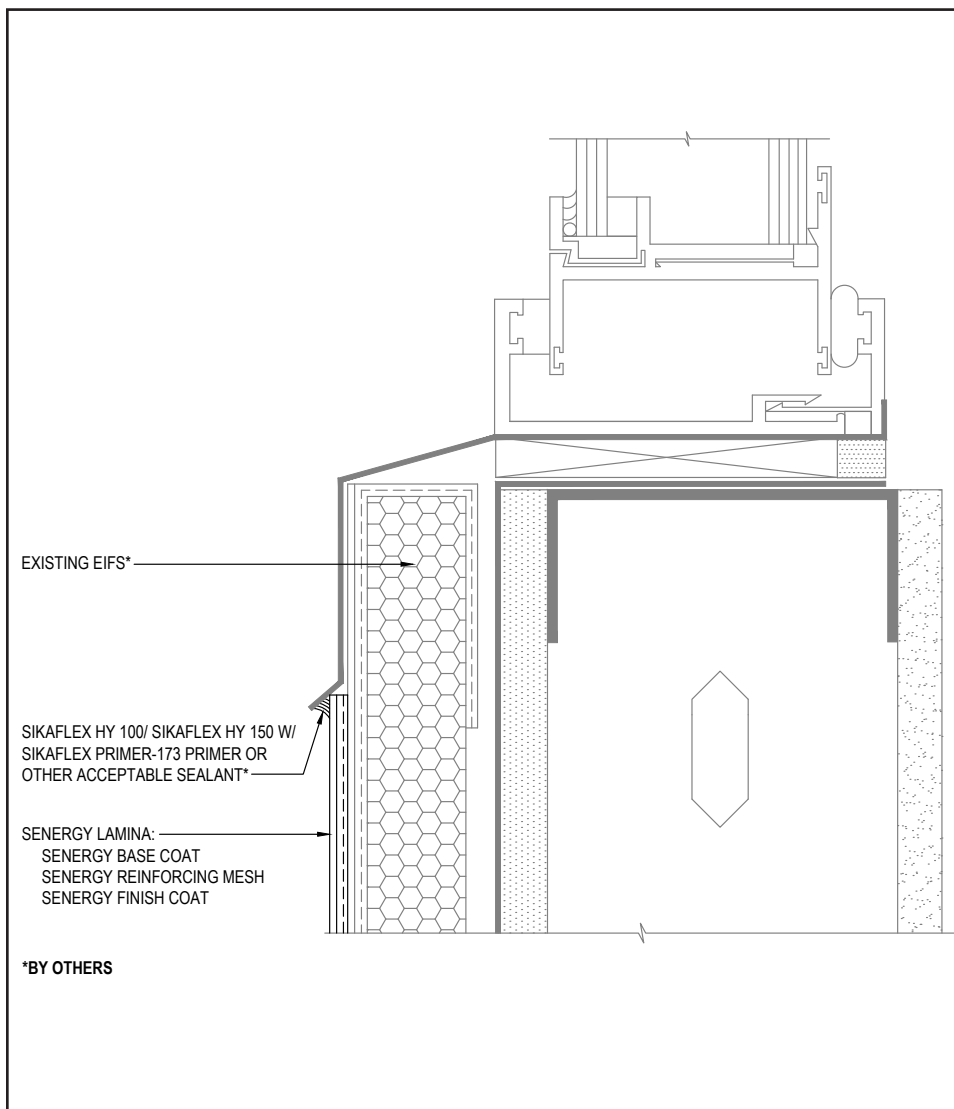
(*NOTE: BY OTHERS)

The details within are the latest recommendations and are represented in good faith by Sika Corporation US (hereinafter Sika). The details are subject to change without notice. Sika accepts no liability for the end use of the details. For conditions not shown, consult Sika for review of specific details.

- Install Sika materials in accordance with current installation instructions.
- Unsatisfactory conditions shall be reported to the General Contractor and corrected before the application of Sika products.

Senergy EIFS Resurfacing System

TYPICAL WINDOW SILL (RECESSED)



- Seal flashing with Sikaflex HY 100 Sikaflex HY 150 with Sikaflex Primer 173 or other acceptable sealants. Reference *Acceptable Sealants for use with Senergy Wall Systems* Technical Bulletin for a list of sealants.

08 0524

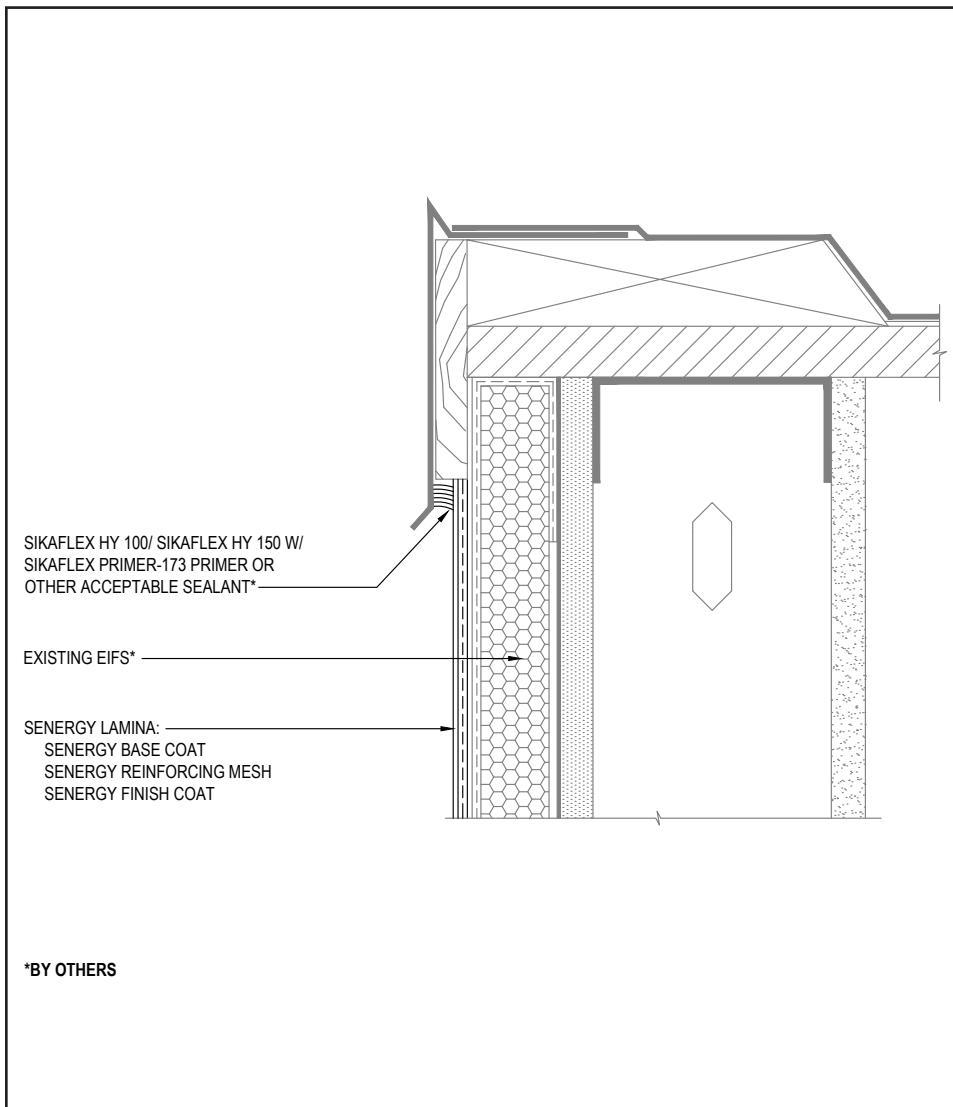
(*NOTE: BY OTHERS)

The details within are the latest recommendations and are represented in good faith by Sika Corporation US (hereinafter Sika). The details are subject to change without notice. Sika accepts no liability for the end use of the details. For conditions not shown, consult Sika for review of specific details.

- Install Sika materials in accordance with current installation instructions.
- Unsatisfactory conditions shall be reported to the General Contractor and corrected before the application of Sika products.

Senergy EIFS Resurfacing System

TYPICAL ROOF EDGE FLASHING



- Seal flashing with Sikaflex HY 100 Sikaflex HY 150 with Sikaflex Primer 173 or other acceptable sealants. Reference *Acceptable Sealants for use with Senergy Wall Systems* Technical Bulletin for a list of sealants.

09 0524

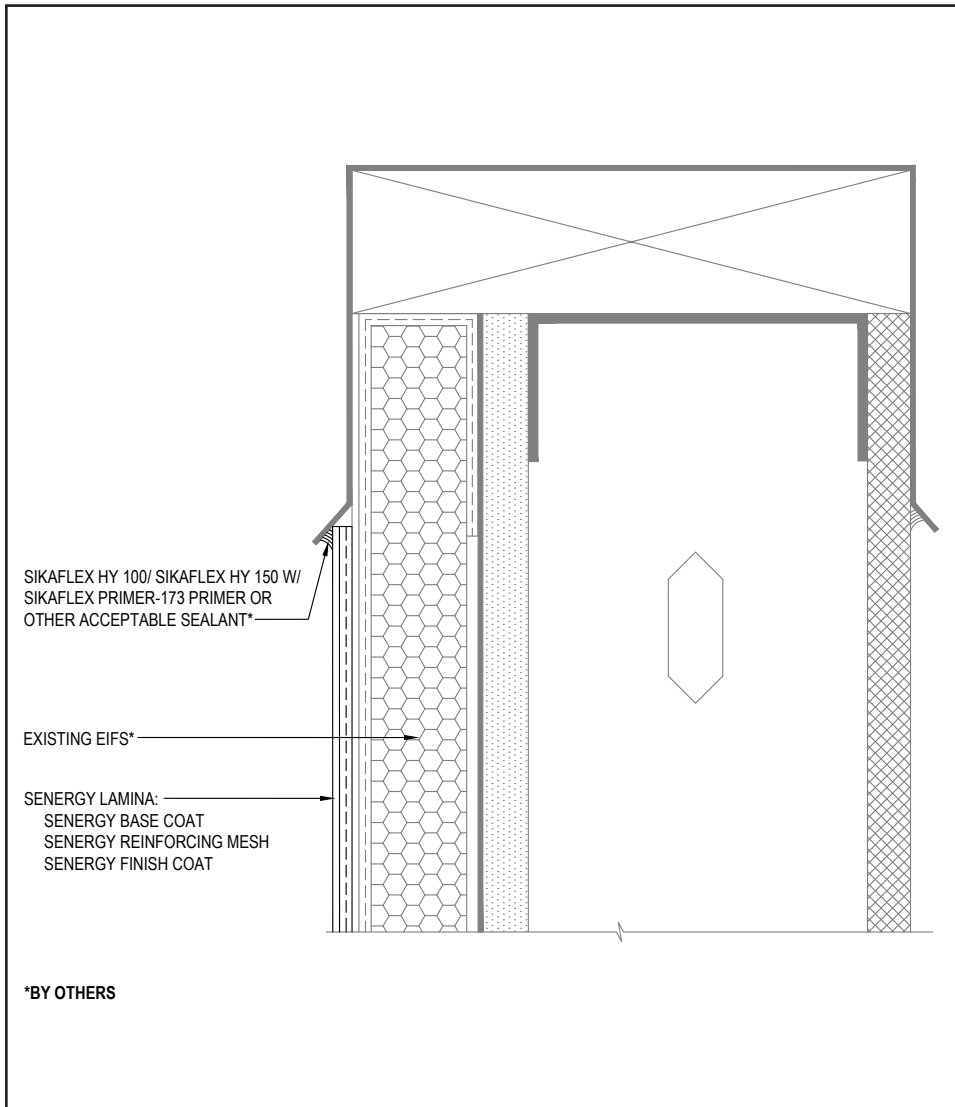
(*NOTE: BY OTHERS)

The details within are the latest recommendations and are represented in good faith by Sika Corporation US (hereinafter Sika). The details are subject to change without notice. Sika accepts no liability for the end use of the details. For conditions not shown, consult Sika for review of specific details.

- Install Sika materials in accordance with current installation instructions.
- Unsatisfactory conditions shall be reported to the General Contractor and corrected before the application of Sika products.

Senergy EIFS Resurfacing System

TYPICAL METAL COPING



- Seal flashing with Sikaflex HY 100 Sikaflex HY 150 with Sikaflex Primer 173 or other acceptable sealants. Reference *Acceptable Sealants for use with Senergy Wall Systems* Technical Bulletin for a list of sealants.

10 0524

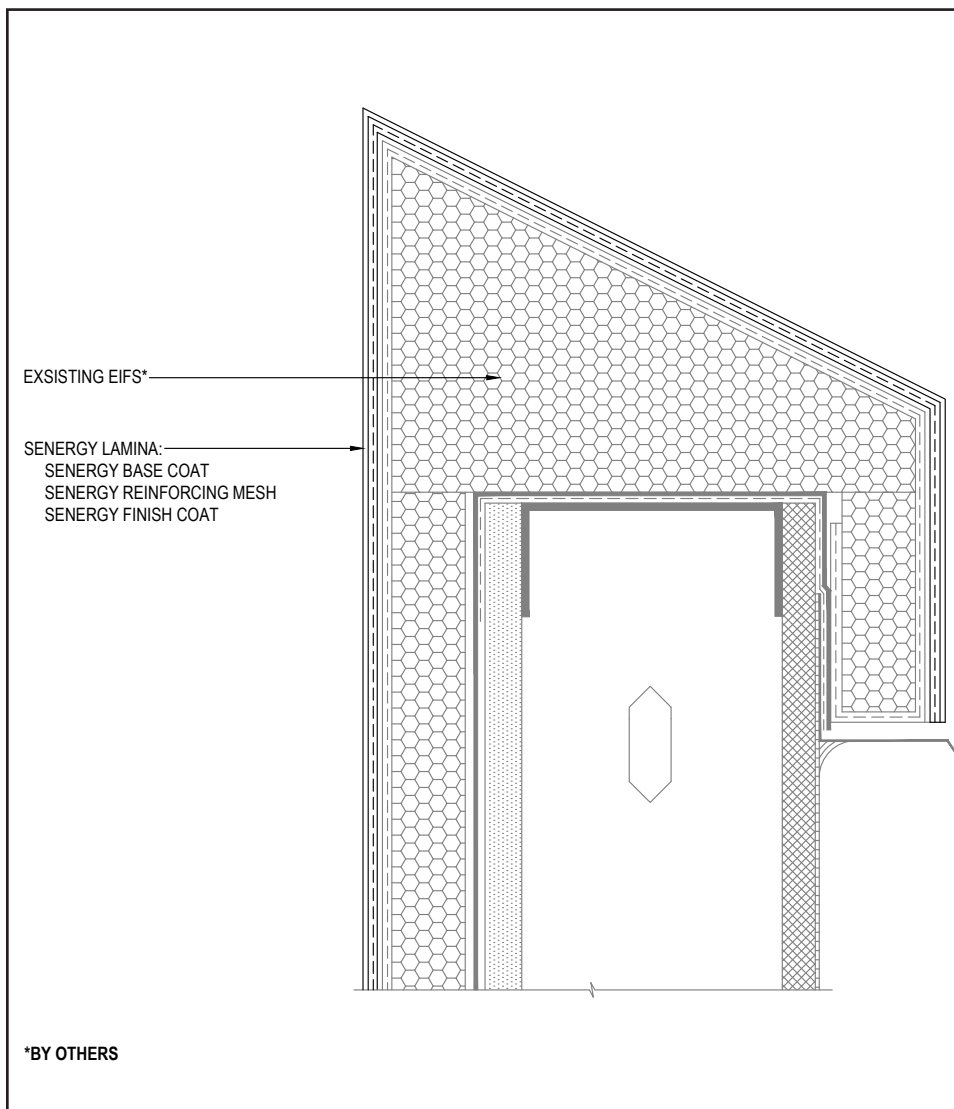
(*NOTE: BY OTHERS)

The details within are the latest recommendations and are represented in good faith by Sika Corporation US (hereinafter Sika). The details are subject to change without notice. Sika accepts no liability for the end use of the details. For conditions not shown, consult Sika for review of specific details.

- Install Sika materials in accordance with current installation instructions.
- Unsatisfactory conditions shall be reported to the General Contractor and corrected before the application of Sika products.

Senergy EIFS Resurfacing System

TYPICAL EPS PARAPET CAP



- Do not apply Senergy Lamina to flat horizontal surfaces. Provide a minimum 6:12 slope for all horizontal surfaces over 1".

11 0524

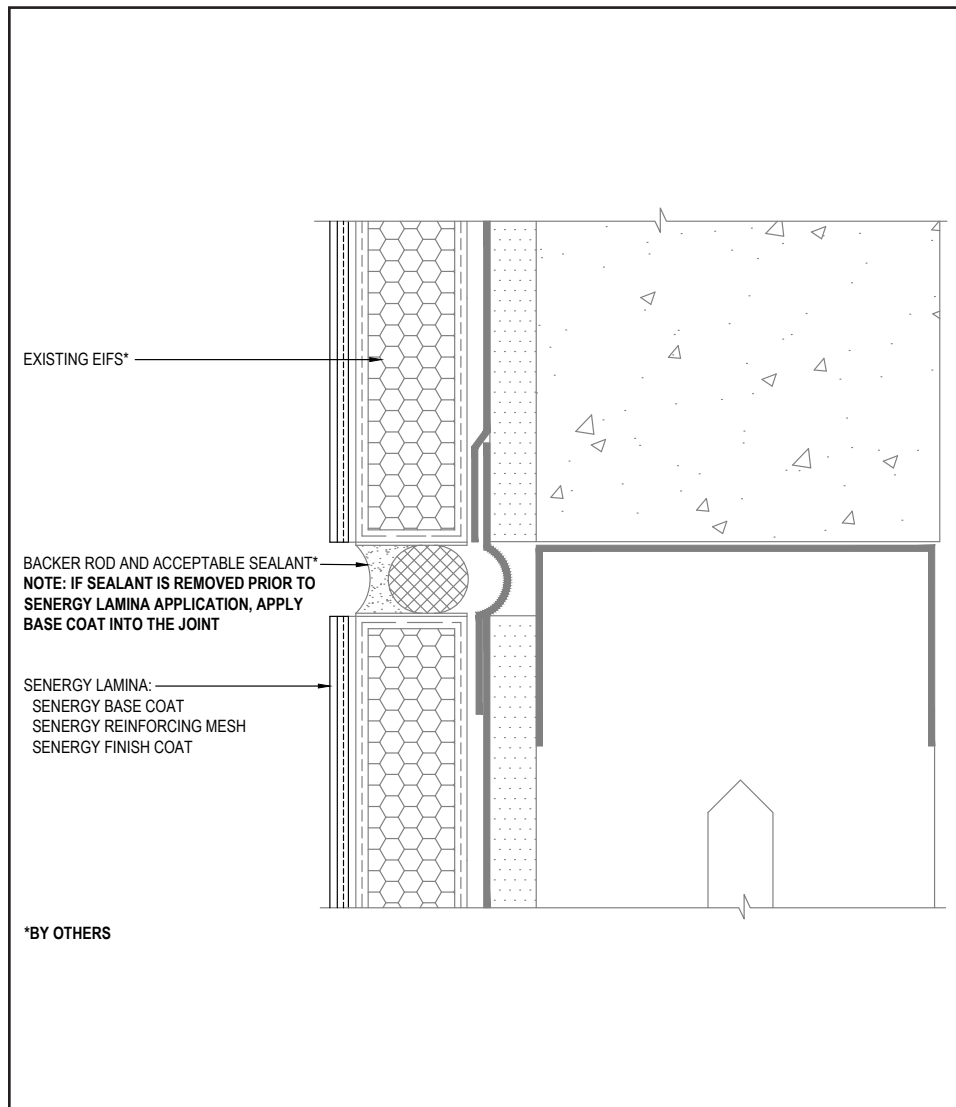
(*NOTE: BY OTHERS)

The details within are the latest recommendations and are represented in good faith by Sika Corporation US (hereinafter Sika). The details are subject to change without notice. Sika accepts no liability for the end use of the details. For conditions not shown, consult Sika for review of specific details.

- Install Sika materials in accordance with current installation instructions.
- Unsatisfactory conditions shall be reported to the General Contractor and corrected before the application of Sika products.

Senergy EIFS Resurfacing System

TYPICAL EXPANSION JOINT AT FLOOR LINE



- Do not apply finish to areas that will receive sealant.
- If sealant is removed prior to Senergy Lamina application, apply base coat into the joint.
- Use Sikaflex HY 100 Sikaflex HY 150 with Sikaflex Primer 173 or other acceptable sealants. Reference *Acceptable Sealants for use with Senergy Wall Systems Technical Bulletin* for a list of sealants.

12 0524

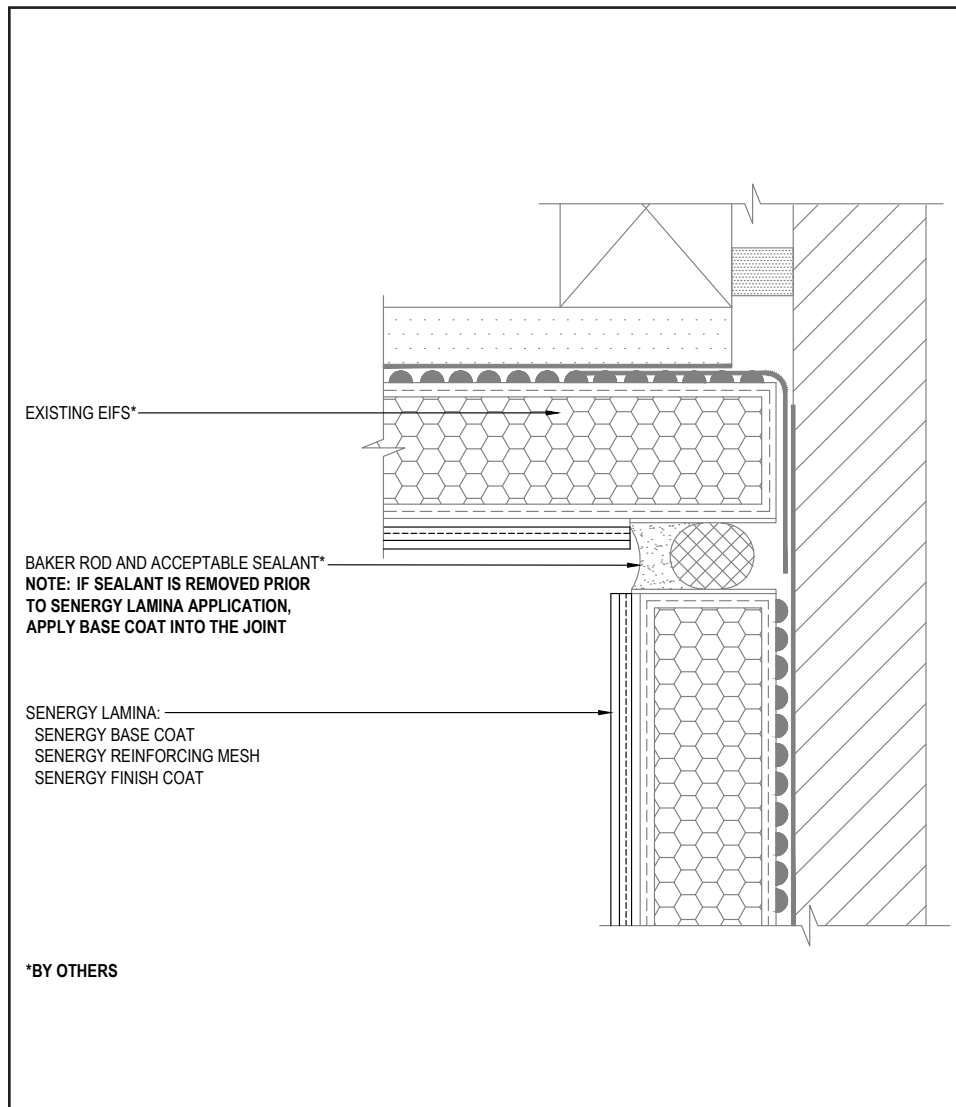
(*NOTE: BY OTHERS)

The details within are the latest recommendations and are represented in good faith by Sika Corporation US (hereinafter Sika). The details are subject to change without notice. Sika accepts no liability for the end use of the details. For conditions not shown, consult Sika for review of specific details.

- Install Sika materials in accordance with current installation instructions.
- Unsatisfactory conditions shall be reported to the General Contractor and corrected before the application of Sika products.

Senergy EIFS Resurfacing System

TYPICAL EXPANSION JOINT AT CHANGE IN SUBSTRATE



- Do not apply finish to areas that will receive sealant.
- If sealant is removed prior to Senergy Lamina application, apply base coat into the joint.
- Use Sikaflex HY 100 Sikaflex HY 150 with Sikaflex Primer 173 or other acceptable sealants. Reference *Acceptable Sealants for use with Senergy Wall Systems Technical Bulletin* for a list of sealants.

13 0524

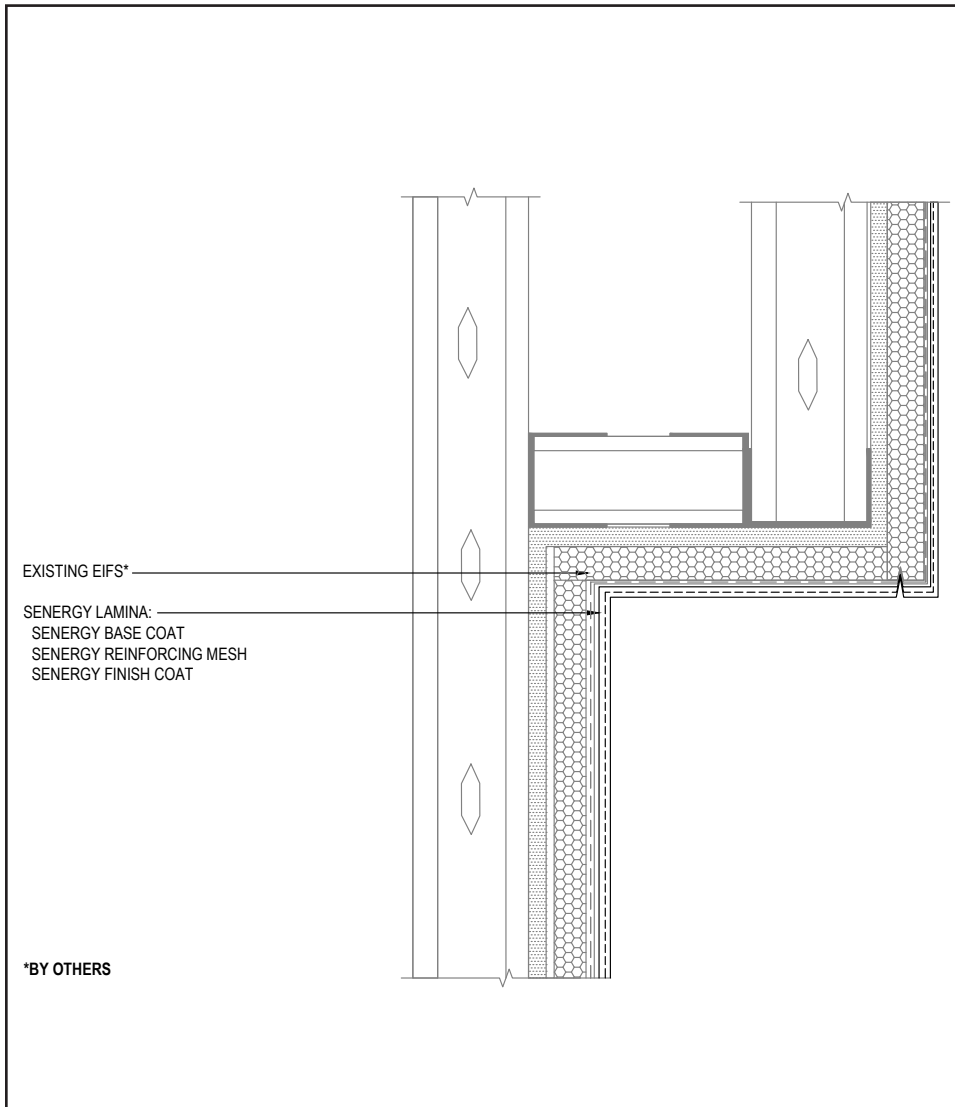
(*NOTE: BY OTHERS)

The details within are the latest recommendations and are represented in good faith by Sika Corporation US (hereinafter Sika). The details are subject to change without notice. Sika accepts no liability for the end use of the details. For conditions not shown, consult Sika for review of specific details.

- Install Sika materials in accordance with current installation instructions.
- Unsatisfactory conditions shall be reported to the General Contractor and corrected before the application of Sika products.

Senergy EIFS Resurfacing System

TYPICAL SECTION AT FASCIA - SOFFIT



14 0524

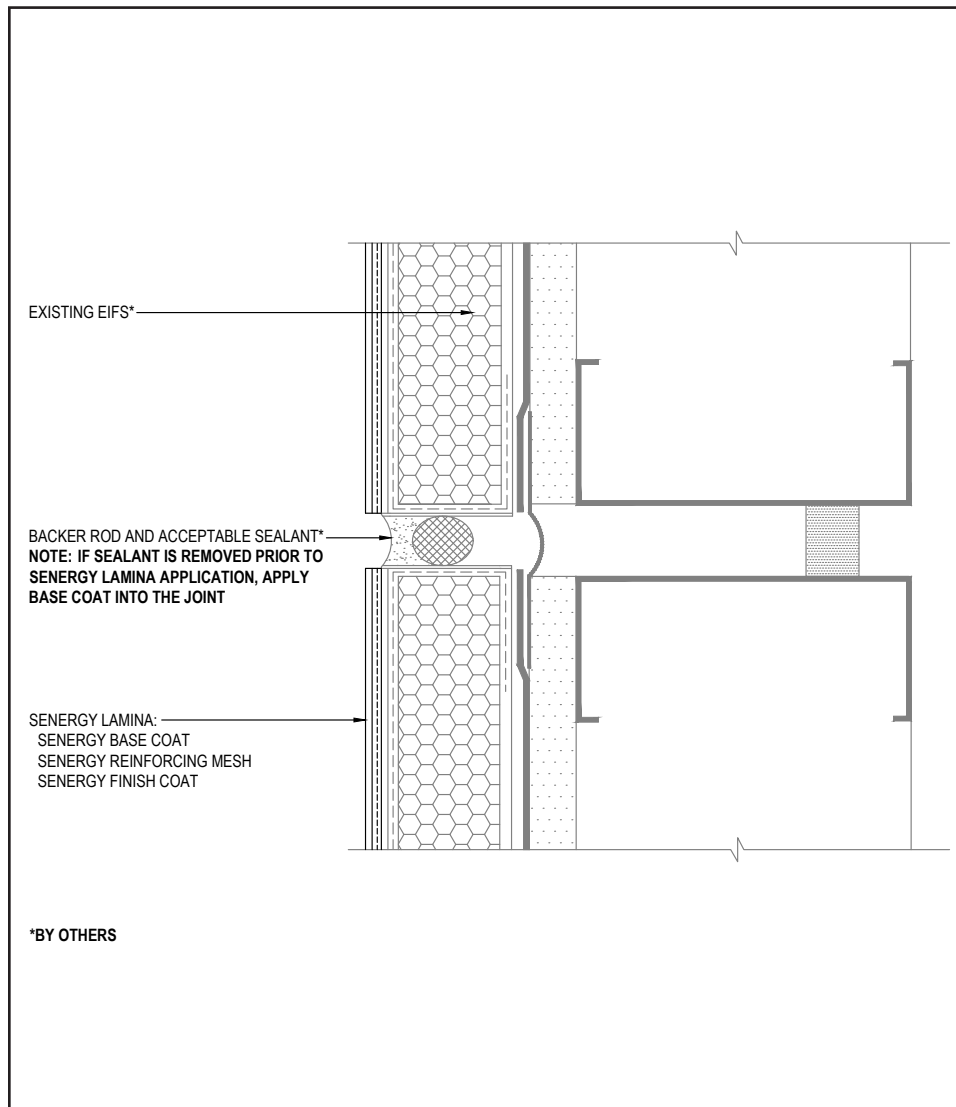
(*NOTE: BY OTHERS)

The details within are the latest recommendations and are represented in good faith by Sika Corporation US (hereinafter Sika). The details are subject to change without notice. Sika accepts no liability for the end use of the details. For conditions not shown, consult Sika for review of specific details.

- Install Sika materials in accordance with current installation instructions.
- Unsatisfactory conditions shall be reported to the General Contractor and corrected before the application of Sika products.

Senergy EIFS Resurfacing System

TYPICAL VERTICAL EXPANSION JOINT



- Do not apply finish to areas that will receive sealant.
- If sealant is removed prior to Senergy Lamina application, apply base coat into the joint.
- Use Sikaflex HY 100 Sikaflex HY 150 with Sikaflex Primer 173 or other acceptable sealants. Reference *Acceptable Sealants for use with Senergy Wall Systems* Technical Bulletin for a list of sealants.

15 0524

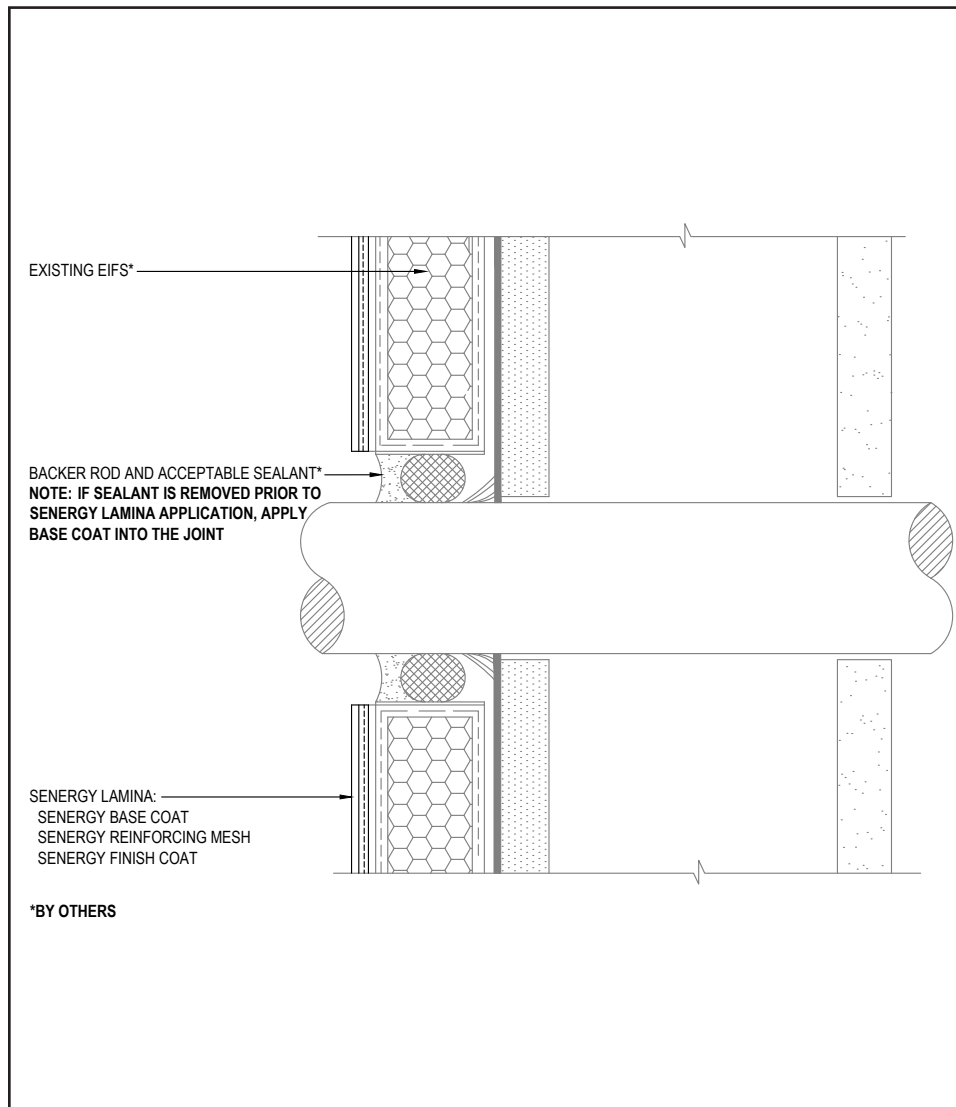
(*NOTE: BY OTHERS)

The details within are the latest recommendations and are represented in good faith by Sika Corporation US (hereinafter Sika). The details are subject to change without notice. Sika accepts no liability for the end use of the details. For conditions not shown, consult Sika for review of specific details.

- Install Sika materials in accordance with current installation instructions.
- Unsatisfactory conditions shall be reported to the General Contractor and corrected before the application of Sika products.

Senergy EIFS Resurfacing System

TYPICAL PIPE PENETRATION



- Do not apply finish to areas that will receive sealant.
- If sealant is removed prior to Senergy Lamina application, apply base coat into the joint.
- Use Sikaflex HY 100 Sikaflex HY 150 with Sikaflex Primer 173 or other acceptable sealants. Reference *Acceptable Sealants for use with Senergy Wall Systems Technical Bulletin* for a list of sealants.

16 0524

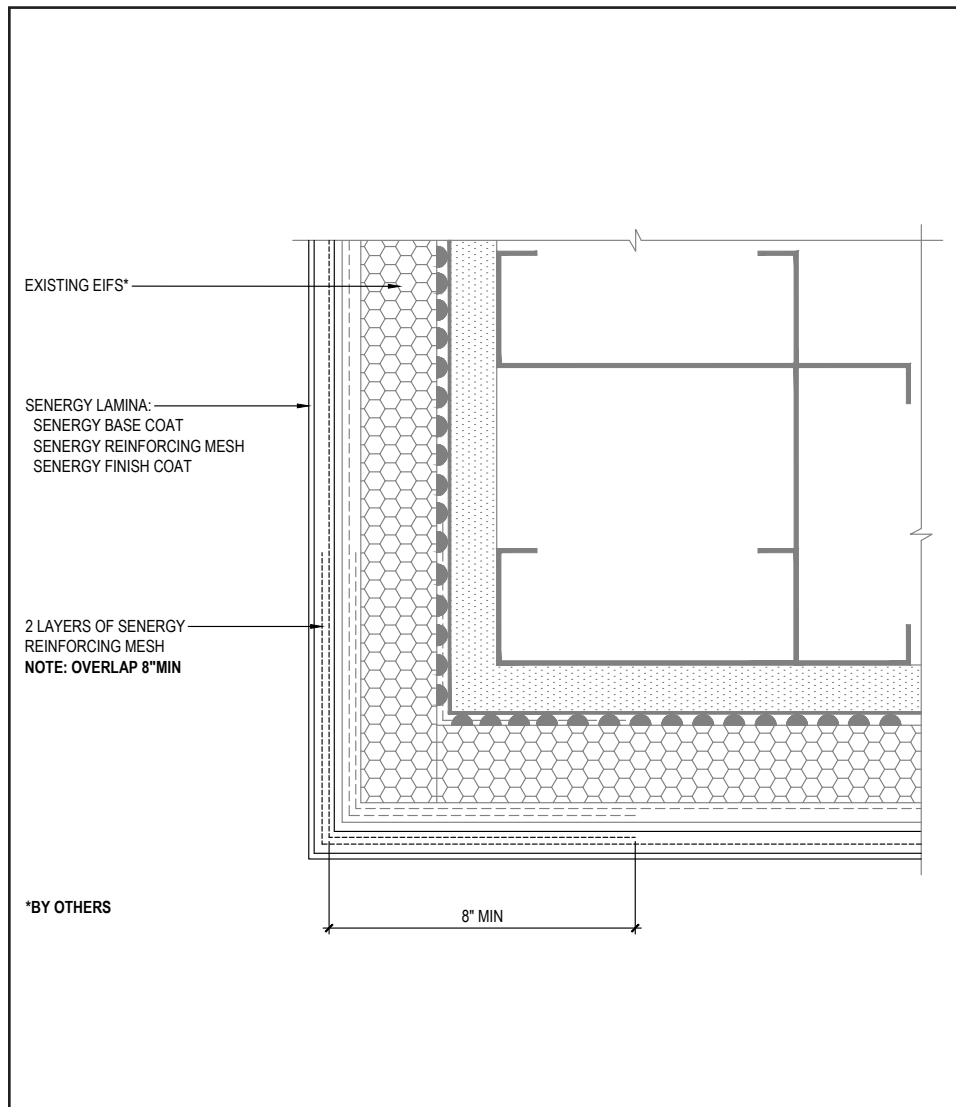
(*NOTE: BY OTHERS)

The details within are the latest recommendations and are represented in good faith by Sika Corporation US (hereinafter Sika). The details are subject to change without notice. Sika accepts no liability for the end use of the details. For conditions not shown, consult Sika for review of specific details.

- Install Sika materials in accordance with current installation instructions.
- Unsatisfactory conditions shall be reported to the General Contractor and corrected before the application of Sika products.

Senergy EIFS Resurfacing System

TYPICAL OUTSIDE CORNER



- Ensure Flexguard 4, SikaWall Intermediate 6 or SikaWall Intermediate 12 Reinforcing Mesh is lapped a minimum of 8" (203 mm) around corners from both sides (creating double layer of mesh at corner).

17 0524

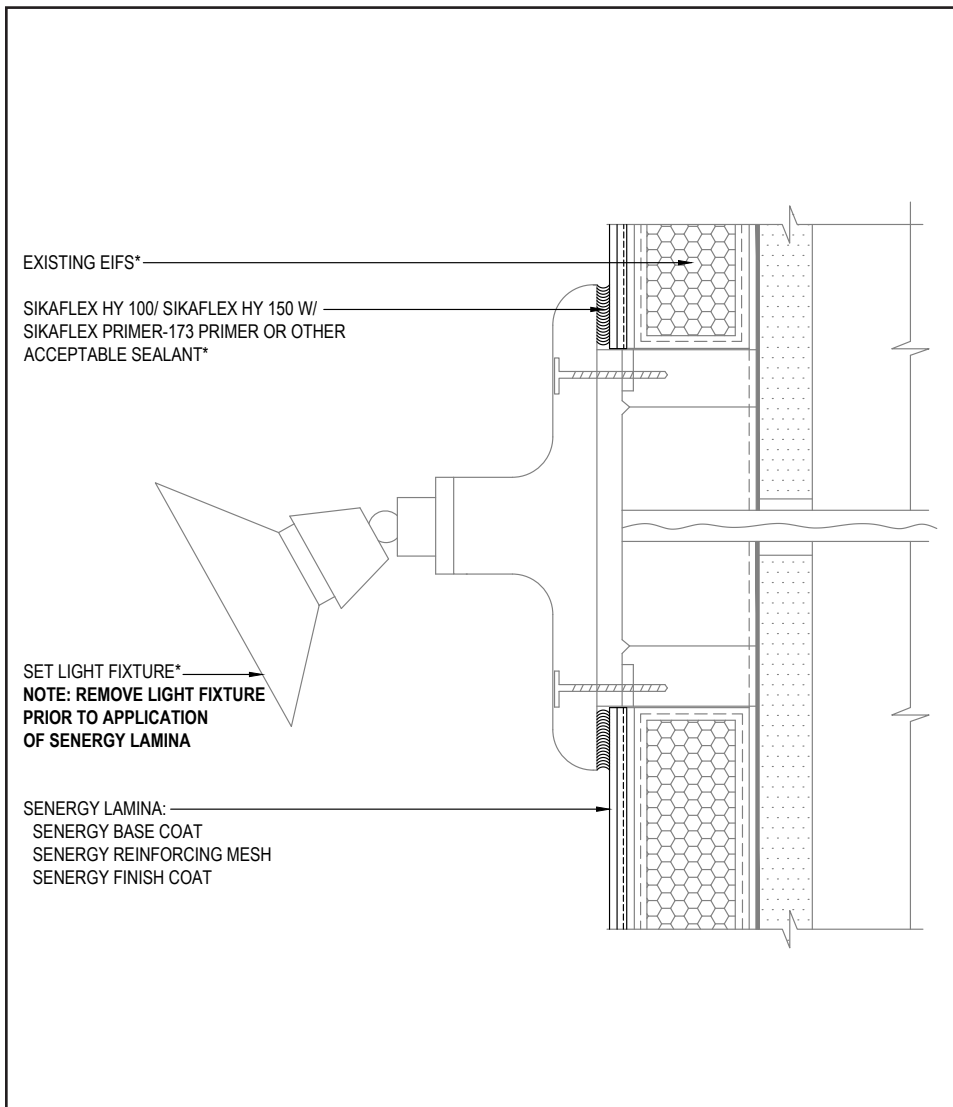
(*NOTE: BY OTHERS)

The details within are the latest recommendations and are represented in good faith by Sika Corporation US (hereinafter Sika). The details are subject to change without notice. Sika accepts no liability for the end use of the details. For conditions not shown, consult Sika for review of specific details.

- Install Sika materials in accordance with current installation instructions.
- Unsatisfactory conditions shall be reported to the General Contractor and corrected before the application of Sika products.

Senergy EIFS Resurfacing System

TYPICAL LIGHT FIXTURE



- Use Sikaflex HY 100 Sikaflex HY 150 with Sikaflex Primer 173 or other acceptable sealants. Reference *Acceptable Sealants for use with Senergy Wall Systems* Technical Bulletin for a list of sealants.

18 0524

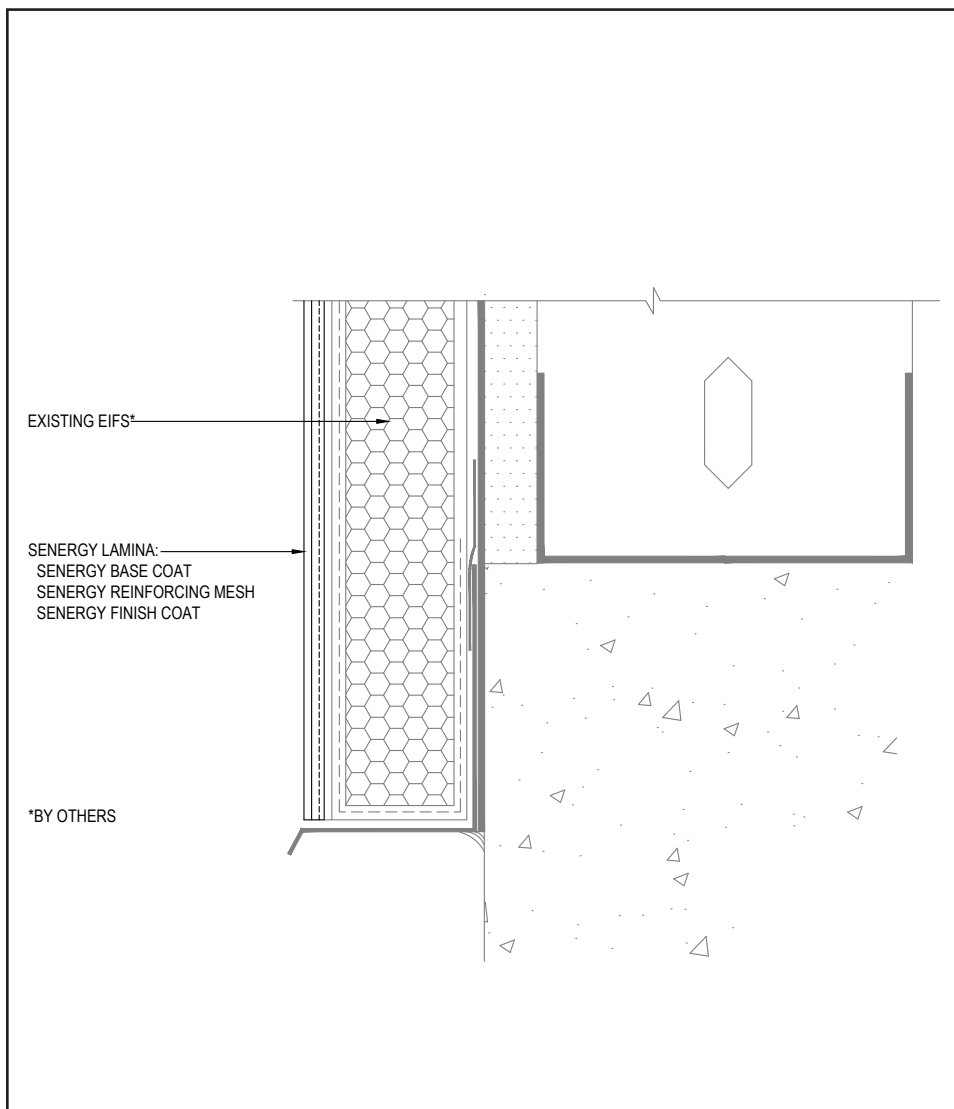
(*NOTE: BY OTHERS)

The details within are the latest recommendations and are represented in good faith by Sika Corporation US (hereinafter Sika). The details are subject to change without notice. Sika accepts no liability for the end use of the details. For conditions not shown, consult Sika for review of specific details.

- Install Sika materials in accordance with current installation instructions.
- Unsatisfactory conditions shall be reported to the General Contractor and corrected before the application of Sika products.

Senergy EIFS Resurfacing System

TYPICAL TERMINATION AT FOUNDATION



19 0524

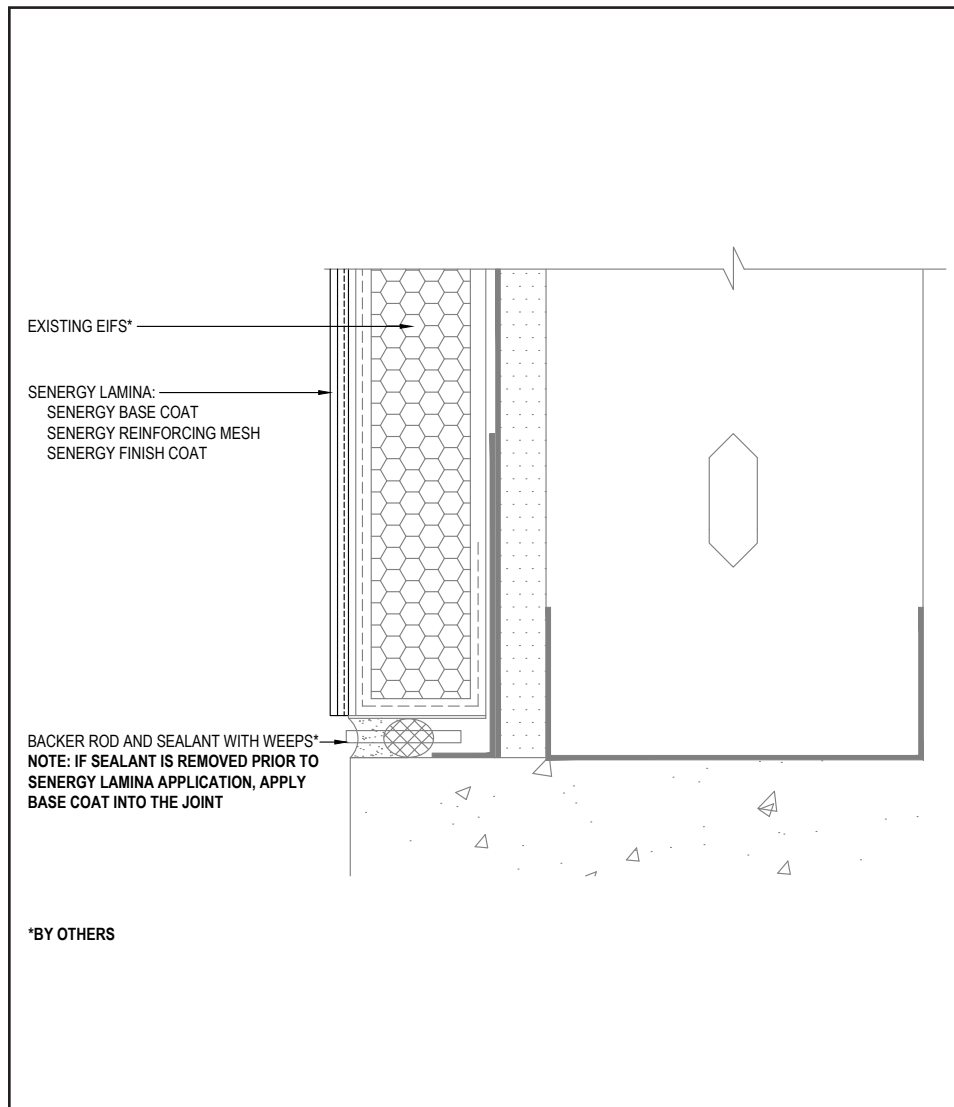
(*NOTE: BY OTHERS)

The details within are the latest recommendations and are represented in good faith by Sika Corporation US (hereinafter Sika). The details are subject to change without notice. Sika accepts no liability for the end use of the details. For conditions not shown, consult Sika for review of specific details.

- Install Sika materials in accordance with current installation instructions.
- Unsatisfactory conditions shall be reported to the General Contractor and corrected before the application of Sika products.

Senergy EIFS Resurfacing System

TYPICAL TERMINATION AT FOUNDATION (FLUSH)



- Do not apply finish to areas that will receive sealant.
- If sealant is removed prior to Senergy Lamina application, apply base coat into the joint.
- Use Sikaflex HY 100 Sikaflex HY 150 with Sikaflex Primer 173 or other acceptable sealants. Reference *Acceptable Sealants for use with Senergy Wall Systems* Technical Bulletin for a list of sealants.
- Place weep tubes a maximum of 24" (610 mm) on center.

20 0524

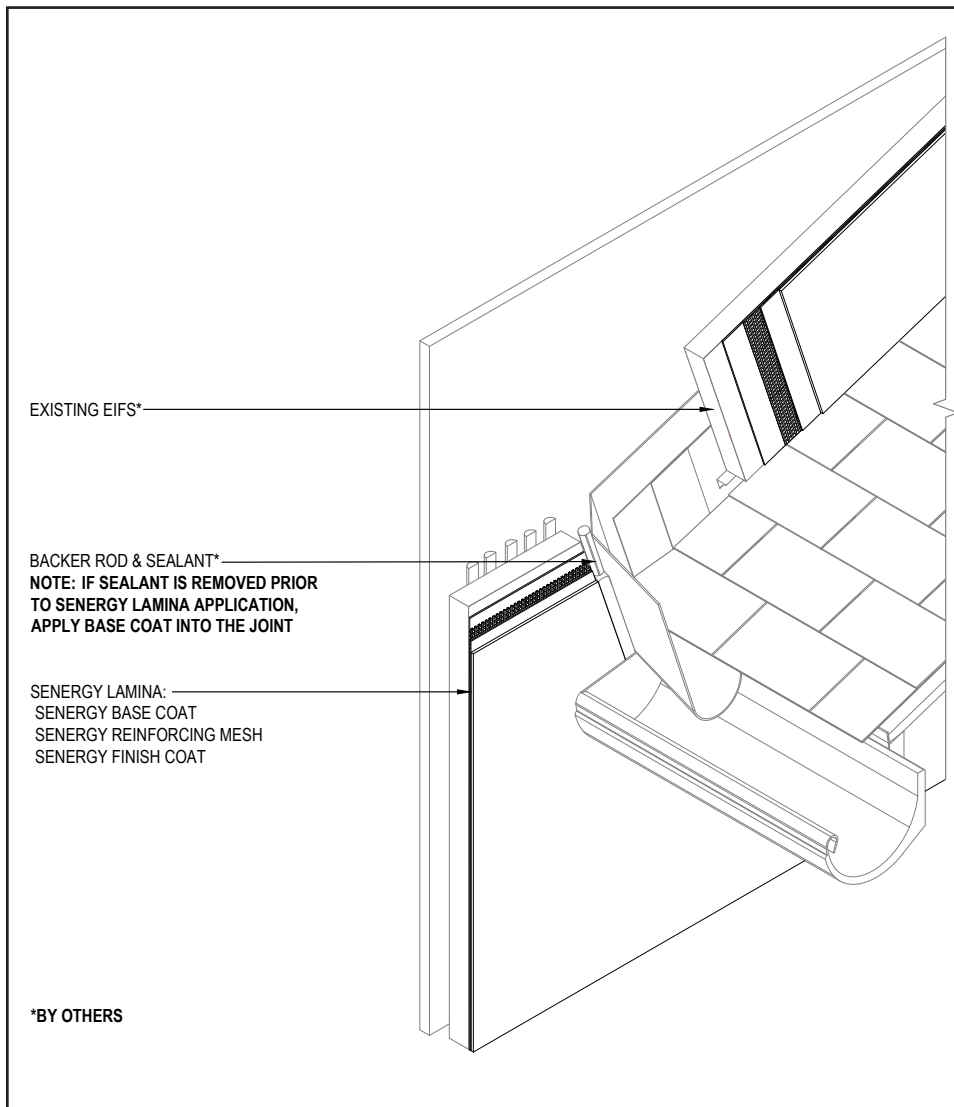
(*NOTE: BY OTHERS)

The details within are the latest recommendations and are represented in good faith by Sika Corporation US (hereinafter Sika). The details are subject to change without notice. Sika accepts no liability for the end use of the details. For conditions not shown, consult Sika for review of specific details.

- Install Sika materials in accordance with current installation instructions.
- Unsatisfactory conditions shall be reported to the General Contractor and corrected before the application of Sika products.

Senergy EIFS Resurfacing System

TYPICAL KICK-OUT FLASHING



- Do not apply finish to areas that will receive sealant.
- If sealant is removed prior to Senergy Lamina application, apply base coat into the joint.
- Use Sikaflex HY 100 Sikaflex HY 150 with Sikaflex Primer 173 or other acceptable sealants. Reference *Acceptable Sealants for use with Senergy Wall Systems Technical Bulletin* for a list of sealants.

21 0524

(*NOTE: BY OTHERS)

The details within are the latest recommendations and are represented in good faith by Sika Corporation US (hereinafter Sika). The details are subject to change without notice. Sika accepts no liability for the end use of the details. For conditions not shown, consult Sika for review of specific details.

- Install Sika materials in accordance with current installation instructions.
- Unsatisfactory conditions shall be reported to the General Contractor and corrected before the application of Sika products.



LIMITED WARRANTY NOTICE

Prior to each use of any product of Sika Corporation, its subsidiaries or affiliates ("SIKA"), the user must always read and follow the warnings and instructions on the product's most current product label, Product Data Sheet and Safety Data Sheet which are available at usa.sika.com/lahabra or by calling our Technical Service Department at +1 (800) 589-1336.

Nothing contained in any SIKA literature or materials relieves the user of the obligation to read and follow the warnings and instructions for each SIKA product as set forth in the current product label, Product Data Sheet and Safety Data Sheet prior to use of the SIKA product.

SIKA warrants this product for one year from date of installation to be free from manufacturing defects and to meet the technical properties on the current Product Data Sheet if used as directed within the product's shelf life. User determines suitability of product for intended use and assumes all risks. User's and/or buyer's sole remedy shall be limited to the purchase price or replacement of this product exclusive of any labor costs. NO OTHER WARRANTIES EXPRESS OR IMPLIED SHALL APPLY INCLUDING ANY WARRANTY OF MERCHANTABILITY OR FITNESS FOR A PARTICULAR PURPOSE. SIKA SHALL NOT BE LIABLE UNDER ANY LEGAL THEORY FOR SPECIAL OR CONSEQUENTIAL DAMAGES. SIKA SHALL NOT BE RESPONSIBLE FOR THE USE OF THIS PRODUCT IN A MANNER TO INFRINGE ON ANY PATENT OR ANY OTHER INTELLECTUAL PROPERTY RIGHTS HELD BY OTHERS. Sale of SIKA products are subject to the Terms and Conditions of Sale which are available at usa.sika.com.

For the most current version of this literature, please visit our website at usa.sika.com/senergy.

Sika Corporation

201 Polito Avenue
Lyndhurst, NJ 07071 USA
Customer Service +1 (800) 433-9517
Technical Service +1 (800) 589-1336
usa.sika.com/senergy

Rev May 2024

BUILDING TRUST

