

# CHROMIX<sup>®</sup> G and L Admixtures

for Color-Conditioned<sup>®</sup> Concrete

- Integral Concrete Color Chart A-350GL ▪



Detroit Riverwalk



## Protect Your Concrete with Scofield Sealers

Scofield sealers protect the surface, enhance the appearance of colored concrete, and may provide protection against contamination and chemical attack by imparting a film-forming layer on the surface of the concrete. Consult a Scofield Concrete Curing & Sealing Guide.

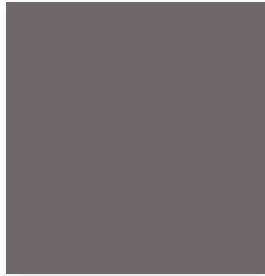
CHROMIX<sup>®</sup> G Admixtures for Color-Conditioned<sup>®</sup> Concrete are free-flowing concentrated pigment granules designed to permanently color concrete and other cementitious materials. They can be poured directly into concrete mixes, conveyed by gravity feed or pneumatic equipment, or pre-dispensed into pulpable bags.

# CHROMIX® G and L Admixtures

for Color-Conditioned® Concrete



**C-10** Cool Gray



**C-284** Landmarks Gray



**C-2436** Flint



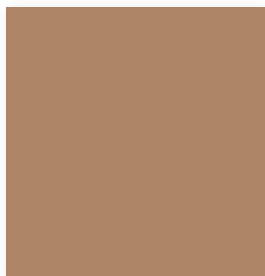
**C-24** Charcoal



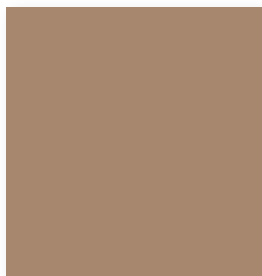
**C-34** Dark Gray



**C-2636** Pecan



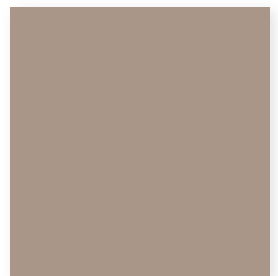
**C-21** Adobe Tan



**C-15** Coachella Sand



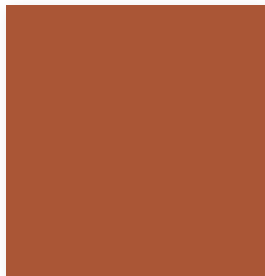
**C-11** Desert Sand



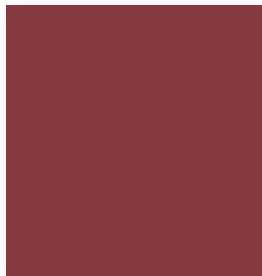
**C-16** Winter Beige



**C-36** Sorrento Red



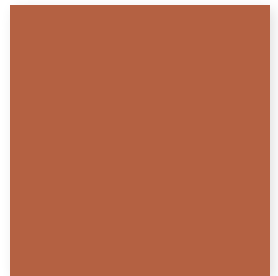
**C-3260** Etruscan Tile



**C-38** Burnt Red



**C-1530** Miami Beach Red



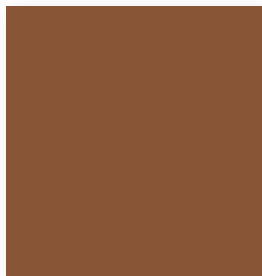
**C-37** Sunbaked Clay



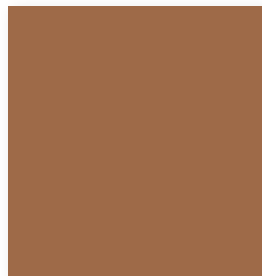
**C-27** Westwood Brown



**C-2136** Durango Brown



**C-30** Brownstone



**C-359** Barcelona Brown



**C-26** Antique Cork



**C-3150** Bark



**C-14** French Gray

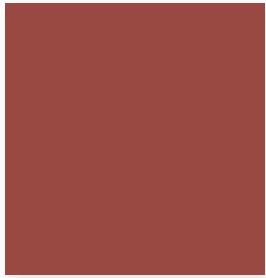
*Both CHROMIX® G and CHROMIX® L Admixtures for Color-Conditioned® Concrete add color that is weather resistant, UV stable, lightfast, and alkali resistant. They contain no materials that initiate, accelerate, or promote the corrosion of steel, coated metal, plastic, or rubber concrete reinforcements. CHROMIX® G and CHROMIX® L Admixtures for Color-Conditioned® Concrete will not migrate from standing water, and can safely color concrete fountains, pools, water features, or concrete that will be polished and encounter damp or wet environments. All pigments used conform to the requirements of ASTM C 979 Pigments for Integrally Colored Concrete.*

▲ Indicates High Dosage Color

Colors shown approximate the color of broom-finished concrete flatwork made with a medium-gray cement and cured with LITHOCHROME Colorwax in the matching color. If Colorwax is not used, the concrete color will not be as vibrant as shown.

Concrete should be batched and placed in accordance with Tech-Data Bulletins.

Concrete color is altered by many factors, including cement and aggregate color, slump, finishing practices, and curing method. Using the contemplated materials and construction techniques, representative samples should be cast for approval, especially when exact color matching is important.



**C-3650** Navajo Red



**C-3760** Roman Tile



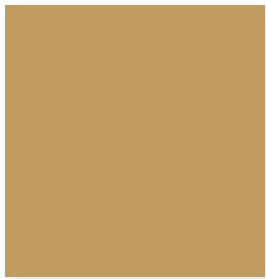
**C-3250** Chicory Spice



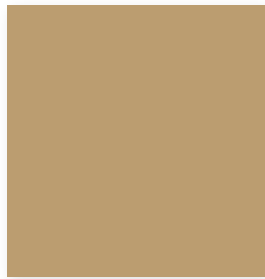
**C-3450** Musky Mulberry



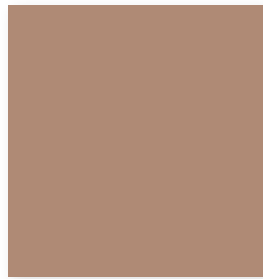
**C-2836** Smokey Plum



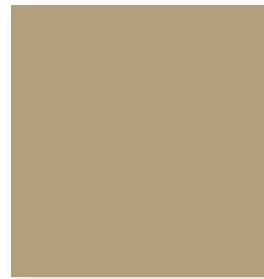
**C-3245** Golden Maize



**C-2536** Mesa Buff



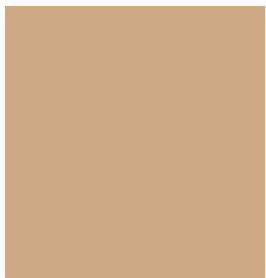
**C-2736** San Diego Buff



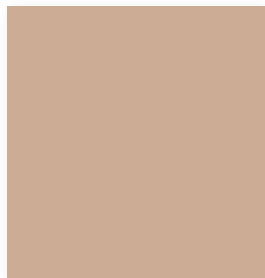
**C-2236** Fennel



**C-2934** Covert Green **Δ**



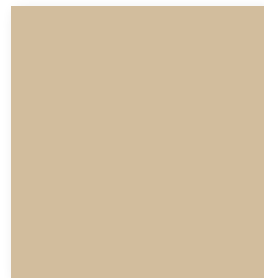
**C-25** Sombrero Buff



**C-135** Summer Beige



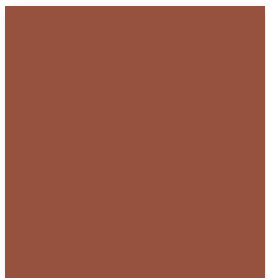
**C-18** Spring Beige



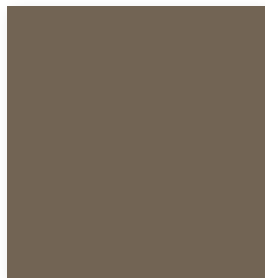
**C-235** Autumn Beige



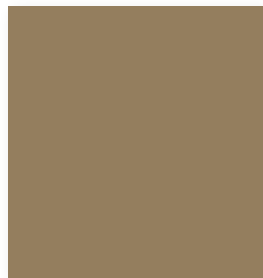
**C-4280** Shadow Gray **Δ**



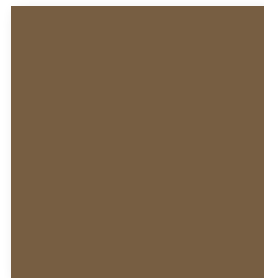
**C-3849** Carob Brown **Δ**



**C-4570** Sudan Brown **Δ**



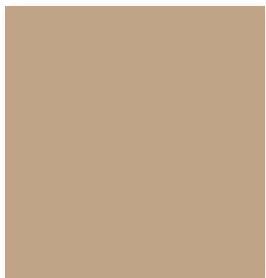
**C-3145** Carlsbad Canyon **Δ**



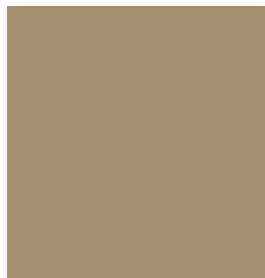
**C-6000** Shale Green **Δ**



**C-20** Limestone



**C-12** Mesa Beige



**C-17** Earth Stone



A SIKA BRAND

# CHROMIX® G and L Admixtures

for Color-Conditioned® Concrete

## Integral Concrete Color Chart A-350GL

Add beauty to both vertical and horizontal projects with CHROMIX® Admixtures. The reliable, nonfading and consistent admixtures for cast-in-place and precast concrete have been proven to stand the test of time.

Available in two convenient forms:

CHROMIX G (granular) available through select ready mix producers with the CHROMIX-It 404 Granular Color Dispenser. The simple, accurate and low maintenance solution to concrete color on demand.

CHROMIX L (liquid) available through selected ready-mix suppliers and distributors.

### Beauty, Durability and Value

CHROMIX Admixtures provide streak-free color-conditioning and performance characteristics superior to concrete colored with raw pigments. More than 550 color formulations are readily available.

Scofield provides free consultation and specification assistance to design and construction professionals to help achieve the required combination of high-performance characteristics.

LITHOCHROME® Colorwax™ is available in matching colors.

Review Tech-Data Sheets and SDS before use.  
Visit [www.scofield.com](http://www.scofield.com) for the most current versions.

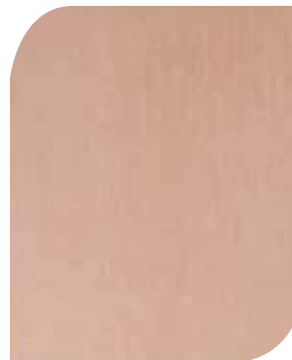
### Curing

LITHOCHROME® Colorwax™ is a premium quality, environmentally friendly, two-component color-matched system designed for curing exterior concrete flatwork that has been colored with CHROMIX® Admixtures or LITHOCHROME® Color Hardener. It is recommended for curing when a uniform appearance is desired and the concrete will be allowed to weather naturally.

LITHOCHROME® Colorwax™ applied as a curing membrane over freshly finished concrete will retain the moisture in the concrete, providing more complete cement hydration which results in higher strengths, lower shrinkage and better overall durability long term. It is recommended for use on surfaces that have broomed, swirl or sponge floated finishes.

### Benefits:

- Allows the concrete to develop its full color potential
- Increases concrete strength and abrasion resistance
- Increases water retention throughout the curing cycle
- Exceeds the requirements of ASTM C 309 (Liquid Membrane-Forming Compounds)



Untreated Quarry Red  
(air cured)



Treated Quarry Red  
(cured with LITHOCHROME  
Colorwax)