

SYSTEM DATA SHEET

Sikafloor® Merflex PS

FLEXIBLE POLYURETHANE WATERPROOFING SMOOTH FINISH FLOORING ENGINEERED WITH SIKAFLOOR®-330 AT 92 - 98 MILS (2.3 - 2.5 MM)

PRODUCT DESCRIPTION

Sikafloor® Merflex PS is a polyurethane-based, flexible flooring system designed for areas requiring a water protection membrane with a durable wear surface, such as mechanical rooms. This system has excellent waterproofing, flexibility and crack-bridging properties. Sikafloor® Merflex PS is typically installed at 92 - 98 mils (2.3 - 2.5 mm) thickness.

USES

Sikafloor® Merflex PS may only be used by experienced professionals.

- Mechanical equipment rooms
- Interior floor spaces where humidity & temperature are micro-controlled
- Access floor systems for computer rooms and offices where liquid lines are prevalent
- Areas requiring an elastomeric water protection surface

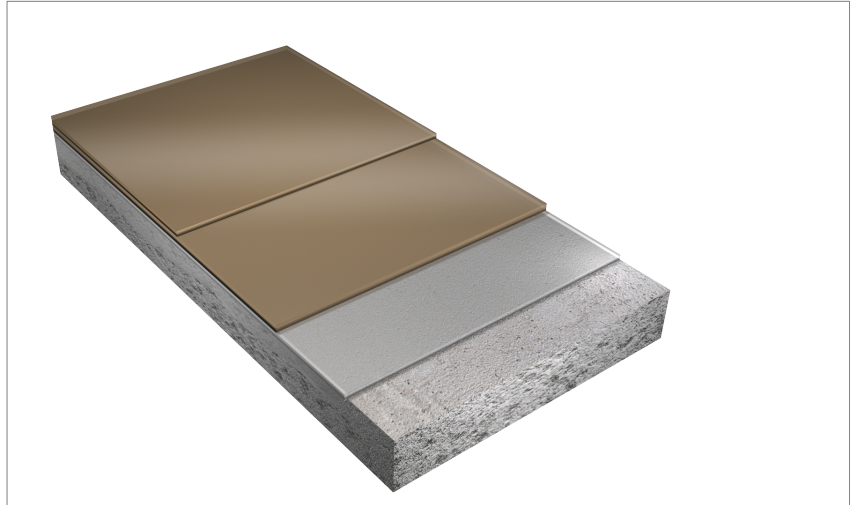
CHARACTERISTICS / ADVANTAGES

- Tough, durable and seamless floor
- Performance benefits of both an elastomeric membrane & a wearing surface combined in one system
- Excellent crack bridging capabilities
- Flammability ASTM E648 Class I with recommended finish coat

SYSTEM INFORMATION

System Structure

Sikafloor® Merflex PS System 92 - 98 mils (2.3 - 2.5 mm)



Description	Products	Thickness mils
1. Primer	Sikafloor®-160	8 - 12
2. Body Coat	Sikafloor®-330 + Sikafloor® Epoxy Pigment Pack	80
3. Top Coat	Sikafloor®-305 W NA	4 - 6

Options Description	Products	Thickness mils
Primers	Sikafloor®-2570 WB	3 - 10
	Sikafloor®-165 FS	8 - 10
	Sikafloor®-1620	12 - 15
Alternate Top Coats	Sikafloor®-510 LPL* + Sikafloor® Urethane Pigment Pack	12 - 15
	Sikafloor®-315** + Sikafloor® Urethane Pigment Pack	3 - 4
2 nd Top Coats	Sikafloor®-340** + Sikafloor® Urethane Pigment Pack	4 - 6

*Sikafloor®-510 LPL would be an alternate top coat to replace Sikafloor®-305 W NA for superior UV resistance, color stability, and increased chemical resistance

**Sikafloor®-315 and Sikafloor®-340 would be optional top coats on top of

Color	Refer to the Sika ComfortFloor Color Additives Selection Guide. The Sikafloor®-330 should be the same or close to the color of Sikafloor®-305 W NA top coat to ensure good hiding characteristics.
Nominal thickness	92 - 98 mils (2.3 - 2.5 mm)
Minimum thickness	92 mils (2.3 mm)

TECHNICAL INFORMATION

Shore A Hardness	>80 (14 days)	ASTM D2240 at 73°F (23°C) and 50% R.H
Impact Strength	160 in - lbs. (1.8 kg-m.) direct and reverse	ASTM D2794 at 73°F (23°C) and 50% R.H
Tensile Strength	1,142 psi.(~ 8.0 N/mm ²)	ASTM D412 at 73°F(23°C) and 50% R.H
Tensile Adhesion Strength	> 400 psi (concrete failure)	ASTM D4541 at 73°F (23°C) and 50% R.H
Tear Strength	142.75 lb./in.(~ 25 N/mm 14 days)	ASTM D624 at 73°F(23°C) and 50% R.H
Crack Bridging Ability	~180 % (14 days)	ASTM D412 at 73°F (23°C) and 50% R.H
Resistance to Thermal Shock	Self Extinguishing	ASTM D635 at 73°F (23°C) and 50% R.H
Chemical Resistance	Sikafloor®-330 must be sealed with Sikafloor®-305 W NA or another suitable Sikafloor® top coat. For chemical resistance of the system, please consult Sikafloor® Technical Services.	

APPLICATION INFORMATION

Coverage	Description	Products	Approximates Sq.Ft./kit
	1. Primer	Sikafloor®-160	3,000@8 mils
	2. Body Coat	Sikafloor®-330 + Sikafloor® Epoxy Pigment Pack	144@80 mils 2 quarts per 7.22 gallon kit
	3. Top Coat	Sikafloor®-305 W NA	653@5 mils
Options			
	Description	Products	Approximates Sq.Ft./kit
	Primers	Sikafloor®-2570 WB	2,667@3 mils
		Sikafloor®-165 FS	1,000@8 mils
		Sikafloor®-1620	533@12 mils
	Alternate Top Coats	Sikafloor®-510 LPL + Sikafloor® Urethane Pigment Pack	1,210@12 mils 3 quarts per 8.33 gallon kit
	2 nd Top Coats	Sikafloor®-315 + Sikafloor® Urethane Pigment Pack	2,340@4 mils 2 quarts per 5.34 gallon kit
		Sikafloor®-340 + Sikafloor® Urethane Pigment Pack	2,200@4 mils 2 quarts per 5 gallon kit
Ambient Air Temperature	Minimum/Maximum 50°/85°F (10°/30°C)		
Substrate Temperature	Minimum/Maximum 50°/85°F (10°/30°C).		
Pot Life	Please refer to the individual Product Data Sheets.		
Waiting / Recoat Times	Please refer to the individual Product Data Sheets.		

BASIS OF PRODUCT DATA

Results may differ based upon statistical variations depending upon mixing methods and equipment, temperature, application methods, test methods, actual site conditions and curing conditions.

LIMITATIONS

Please refer to the individual Product Data Sheets for Limitations

ENVIRONMENTAL, HEALTH AND SAFETY

For further information and advice regarding transportation, handling, storage and disposal of chemical products, user should refer to the actual Safety Data Sheets containing physical, environmental, toxicological and other safety related data. User must read the current actual Safety Data Sheets before using any products. In case of an emergency, call CHEMTREC at 1-800-424-9300, International 703-527-3887.

APPLICATION INSTRUCTIONS

SUBSTRATE PREPARATION

Concrete surfaces must be clean and sound. Remove all dust, dirt, existing paint films, efflorescence, exudates, laitance, form oils, hydraulic or fuel oils, brake fluid, grease, fungus, mildew, biological residues or any other contaminants that may prohibit a good bond.

Prepare the surface by any appropriate mechanical means, in order to achieve a profile equivalent to ICRI - CSP 3-6. The compressive strength of the concrete substrate should be at least 3,625 psi (25 MPa) at 28 days and a minimum of 218 psi (1.5 MPa) in tension at the time of application.

Repairs to cementitious substrates, filling of blowholes, leveling of irregularities, etc. should be carried out using an appropriate Sika profiling mortar. Contact Sika Technical Service for a recommendation.

Priming

Priming for concrete substrate is required. Prime with either Sikafloor®-160, Sikafloor®-161, Sikafloor®-1620, Sikafloor®-165 FS or Sikafloor®-2570 WB.

Allow the primer to cure (varies with temperature and humidity) until tack free before applying subsequent coats. Ensure that the primer is pore-free, pinhole-free and provides uniform and complete coverage over the entire substrate. Please refer to the individual most current and respective Product Data Sheet for specific and detailed information.

Please refer to the individual most current and respective Product Data Sheet for specific and detailed information.

MIXING

Please refer to the individual Product Data Sheets.

APPLICATION

Please refer to the individual Product Data Sheets.

OTHER RESTRICTIONS

See Legal Disclaimer.

LEGAL DISCLAIMER

- KEEP CONTAINER TIGHTLY CLOSED
- KEEP OUT OF REACH OF CHILDREN
- NOT FOR INTERNAL CONSUMPTION
- FOR INDUSTRIAL USE ONLY
- FOR PROFESSIONAL USE ONLY

Prior to each use of any product of Sika Corporation, its subsidiaries or affiliates ("SIKA"), the user must always read and follow the warnings and instructions on the product's most current product label, Product Data Sheet and Safety Data Sheet which are available at usa.sika.com or by calling SIKA's Technical Service Department at 1-800-933-7452. Nothing contained in any SIKA literature or materials relieves the user of the obligation to read and follow the warnings and instructions for each SIKA product as set forth in the current product label, Product Data Sheet and Safety Data Sheet prior to use of the SIKA product.

SIKA warrants this product for one year from date of installation to be free from manufacturing defects and to meet the technical properties on the current Product Data Sheet if used as directed within the product's shelf life. User determines suitability of product for intended use and assumes all risks. User's and/or buyer's sole remedy shall be limited to the purchase price or replacement of this product exclusive of any labor costs. **NO OTHER WARRANTIES EXPRESS OR IMPLIED SHALL APPLY INCLUDING ANY WARRANTY OF MERCHANTABILITY OR FITNESS FOR A PARTICULAR PURPOSE. SIKA SHALL NOT BE LIABLE UNDER ANY LEGAL THEORY FOR SPECIAL OR CONSEQUENTIAL DAMAGES. SIKA SHALL NOT BE RESPONSIBLE FOR THE USE OF THIS PRODUCT IN A MANNER TO INFRINGE ON ANY PATENT OR ANY OTHER INTELLECTUAL PROPERTY RIGHTS HELD**

BY OTHERS.

Sale of Sika products are subject to the Terms and Conditions of Sale which are available at <https://usa.sika.com/en/group/SikaCorp/termsandconditions.html> or by calling 1-800-933-7452.

Sika Corporation

201 Polito Avenue
Lyndhurst, NJ 07071
Phone: +1-800-933-7452
Fax: +1-201-933-6225
usa.sika.com



System Data Sheet
Sikafloor® Merflex PS
May 2024, Version 02.01
02081290000000100

SikafloorMerflexPS-en-US-(05-2024)-2-1.pdf

