

PRODUCT DATA SHEET

SikaWall®-4900 Antiquing Glaze CS

100% acrylic stain for textured finishes.

PRODUCT DESCRIPTION

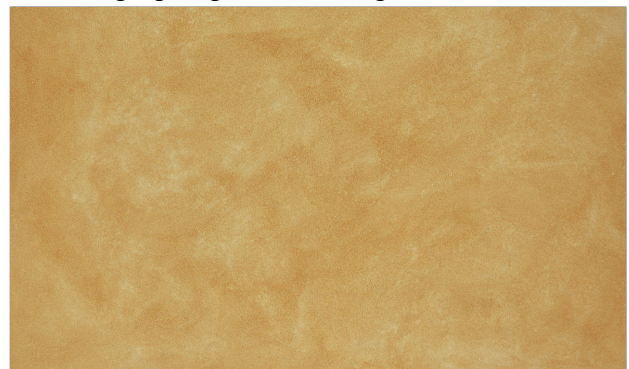
A convenient stain or glaze product consisting of a 100% acrylic polymer clear base that is distributor-tinted. SikaWall Antiquing Glaze produces beautiful aesthetics with varied degrees of mottling, coloration and glaze.

USES

An antiquing stain product used to impart an ‘old world’ mottled look to stucco and EIFS exterior wall systems that are surfaced with acrylic or elastomeric textured finish.

CHARACTERISTICS / ADVANTAGES

- Fast drying.
- Excellent weather resistance.
- Silicone enhanced.
- An optimized balance of base to pigment, allowing for color highlighting, but not hiding the substrate.



Color shown: Sicilian Sand

TECHNICAL INFORMATION

	METHOD	CRITERIA	RESULT
Permeability to Water Vapor	ASTM E96 Method B	Minimum 10 perms	14 Perms
Resistance to wind-driven rain	ASTM D6904	98 mph Wind Driven Rain	Pass

PRODUCT INFORMATION

Packaging	2 gallon pail (7.6 liter)
Shelf Life	Two (2) years, when properly stored in original container.
Storage Conditions	<ul style="list-style-type: none"> ▪ Store in a cool, dry place protected from freezing, extreme heat and

direct sun. Store at no less than 40°F (4.5°C) and not greater than 85°F (29°C).

- Do not stack pallets.

Color	Available in 8 standard colors: Venetian Red, Coral Siena, Desert Earth, Midnight Mist, Sunset Gold, Castillo Garden, Silver Lake and Sicilian Sand. <small>Variation of the final look can be achieved by using different colored finishes and textures.</small>
Volatile organic compound (VOC) content	ASTM D3960 (based in part on EPA Method 24) <100 g/L less water and exempt solvent
Ambient Air Temperature	<ul style="list-style-type: none">▪ Apply only when air and surface temperature is between 50-90°F (10-32°C).▪ Do not apply if surface or ambient temperature is expected to fall below 45°F (7°C) within 24 hours after application unless supplemental heat is provided during installation and drying period for at least 24 hours after installation and until dry.
Substrates	Acrylic and Elastomeric Textured Finishes
Drying Time	Under average conditions [70°F (21°C), 50% Relative Humidity] <ul style="list-style-type: none">▪ Approximately 3 hours. Drying time is dependent on humidity, air temperature, sun exposure, surface conditions and film thickness. Lower temperature, higher humidity and application in shaded areas will extend drying time.▪ Protect newly applied material from rain and temperatures less than 45°F (7°C) for at least 24 hours after application.

BASIS OF PRODUCT DATA

Results may differ based upon statistical variations depending upon mixing methods and equipment, temperature, application methods, test methods, actual site conditions and curing conditions.

MIXING

Mix the contents of the SikaWall Antiquing Glaze pail with a paddle and low-speed drill until thoroughly blended. Ensure all the pigment is well dispersed within the liquid. Periodic mixing with a gentle stirring action is recommended while using the product. If the product sits overnight, remix for one minute with the drill mixer before using.

- Do not over mix as this will create excessive air.
- Additives are not permitted.
- Close the container when not in use.
- Clean tools with soap and water immediately after use.

SURFACE PREPARATION AND CONSIDERATIONS

The finish surface must be clean, dry, sound and free of loose material, paint, efflorescence, contaminants and other coatings.

- Minimum application temperature is 50°F (10°C) and rising to a maximum of 90°F (32°C)
- Ensure that windows and surrounding areas are masked, if contact occurs on windows, remove immediately with a damp cloth before the glaze dries.
- SikaWall Antiquing Glaze is a freestyle product that produces a look that is greatly influenced by the application technique. It is best to apply the material

thinly and repeat the application if necessary to create depth rather than remove excess product.

- A mock-up is recommended to ensure a desired look is achieved based on the chosen application technique.

APPLICATION

Sponge

Dip a clean damp sponge into the SikaWall Antiquing Glaze product and apply the product to the wall in a random fashion, achieving a swirled or sponged-on look. Color, depth and contrast are achieved by distributing the product randomly with the final appearance in mind.

Spray

- Airless spray equipment recommendation: 1 GPM or 0.54 GPM airless sprayer with a .15 -.17 tip. Pump pressure and tip size based on applicator preference. Refer to the manufacturer's instructions and tip offering.
- Lightly and randomly spray the product on the wall with a low-pressure sprayer. Backfloat the product using a float as needed to remove or soften the look of the color application. Frequently squeeze or rinse with water any excess product from the sponge float.

LIMITATIONS

1. Not for use on damp surfaces, below-grade applications or on surfaces subject to water immersion.
2. Apply only when air and surface temperature is between 50-90°F (10-32°C). Do not apply if surface or ambient temperature is expected to fall below 45°F (7°C) within 24 hours after application unless supplemental heat is provided during installation and

drying period for at least 24 hours after installation and until dry.

3. Do not apply to frozen surfaces.
4. Not for application over hydrophobic finishes.
5. Samples of SikaWall Antiquing Glaze are available for color approval only. Samples for job approval must be made in the field by the applicator and approved prior to ordering. A jobsite mock-up is recommended to qualify color and workmanship.

Consult Sika Facades Technical Services Department at +1 (800) 589-1336 for specific recommendations concerning all other applications.

ENVIRONMENTAL, HEALTH AND SAFETY

For further information and advice regarding transportation, handling, storage and disposal of chemical products, user should refer to the actual Safety Data Sheets containing physical, environmental, toxicological and other safety related data. User must read the current actual Safety Data Sheets before using any products. In case of an emergency, call CHEMTREC at 1-800-424-9300, International 703-527-3887.

LEGAL DISCLAIMER

- KEEP CONTAINER TIGHTLY CLOSED
- KEEP OUT OF REACH OF CHILDREN
- NOT FOR INTERNAL CONSUMPTION
- FOR INDUSTRIAL USE ONLY
- FOR PROFESSIONAL USE ONLY

Prior to each use of any product of Sika Corporation, its subsidiaries or affiliates ("SIKA"), the user must always read and follow the warnings and instructions on the product's most current product label, Product Data Sheet and Safety Data Sheet which are available at usa.sika.com or by calling SIKA's Technical Service Department at 1-800-933-7452. Nothing contained in any SIKA literature or materials relieves the user of the obligation to read and follow the warnings and instructions for each SIKA product as set forth in the current product label, Product Data Sheet and Safety Data Sheet prior to use of the SIKA product.

SIKA warrants this product for one year from date of installation to be free from manufacturing defects and to meet the technical properties on the current Product Data Sheet if used as directed within the product's shelf life. User determines suitability of product for intended use and assumes all risks. User's and/or buyer's sole remedy shall be limited to the purchase price or replacement of this product exclusive of any labor costs. **NO OTHER WARRANTIES EXPRESS OR IMPLIED SHALL APPLY INCLUDING ANY WARRANTY OF MERCHANTABILITY OR FITNESS FOR A PARTICULAR PURPOSE. SIKA SHALL NOT BE LIABLE UNDER ANY LEGAL THEORY FOR SPECIAL OR CONSEQUENTIAL DAMAGES. SIKA SHALL NOT BE RESPONSIBLE FOR THE USE OF THIS PRODUCT IN A MANNER TO INFRINGE ON ANY PATENT OR ANY OTHER INTELLECTUAL PROPERTY RIGHTS HELD BY OTHERS.**

Sale of SIKA products are subject to the Terms and Conditions of Sale which are available at <https://usa.sika.com/en/group/SikaCorp/termsandconditions.html> or by calling 1-800-933-7452.

Sika Corporation

201 Polito Avenue
Lyndhurst, NJ 07071
Phone: +1-800-933-7452
Fax: +1-201-933-6225
usa.sika.com



Product Data Sheet

SikaWall®-4900 Antiquing Glaze CS
November 2024, Version 01.01
021830400100000166

SikaWall-4900AntiquingGlazeCS-en-US-(11-2024)-1-1.pdf

