

Senergy[®]



Senershield-R/-RS/-VB

Concrete / Masonry Incorporating Fluid-Applied Vapor
Permeable and Impermeable Air/Water-Resistive Barriers

Typical Details

BUILDING TRUST



Senershield-R/-RS/-VB

Typical Details

Concrete/Masonry Incorporating Fluid-Applied Vapor Permeable and Impermeable Air/Water-Resistive Barriers

Table of Contents

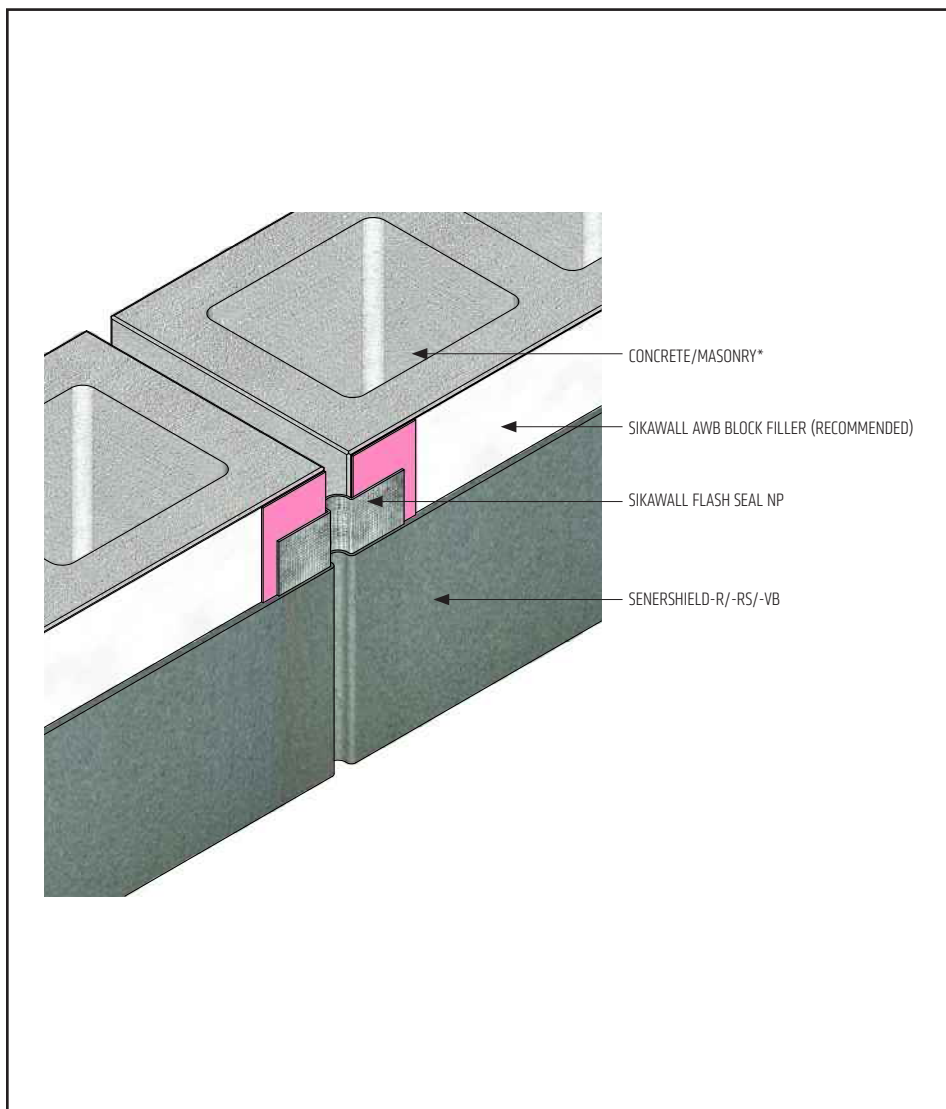
1. Control or Expansion Joint SikaWall Flash Seal NP Only
2. Control or Expansion Joint (Backer Rod & Sealant Only)
3. Control or Expansion Joint (SikaWall Flash Seal NP with Backer Rod & Sealant)
4. Rough Opening Treatment
5. Penetration through Wall Construction
6. Penetration through Wall Construction (with Fabric Only)
7. Rough Opening Treatment with Blocking and Sheathing Fabric
8. Rough Opening Treatment with Blocking and SikaWall Flash Seal NP
9. Termination at Grade - Masonry Veneer
10. EIFS Abutment to Brick with Continuous Insulation
11. Termination at Foundation with Brick incorporating Through Wall Flashing - Termination Bar
12. Termination at Foundation with Brick incorporating Through Wall Flashing - SikaWall Flash Seal NP
13. Inside Corner
14. Outside Corner
15. Inside Corner Change in Substrate
16. Termination at Floorline-Brick Shelf Angle
17. Through Wall Flashing at Head
18. Window Jamb
19. Window Head
20. Window Sill
21. Roof Edge or Parapet Cap Flashing

Notes:

- **The details within are the latest recommendations and are represent in good faith by Sika Corporation US (hereinafter Sika). The details are subject to change without notice. Sika accepts no liability for the end use of the details. For conditions not shown, consult Sika for review of specific details.**
- **Install Sika materials in accordance with current installation instructions.**
- **Unsatisfactory conditions shall be reported to the General Contractor and corrected before the application of Sika products.**

Senershield-R/-RS/-VB

TYPICAL CONTROL OR EXPANSION JOINT (SIKAWALL FLASH SEAL NP ONLY)



CMU-01 2401

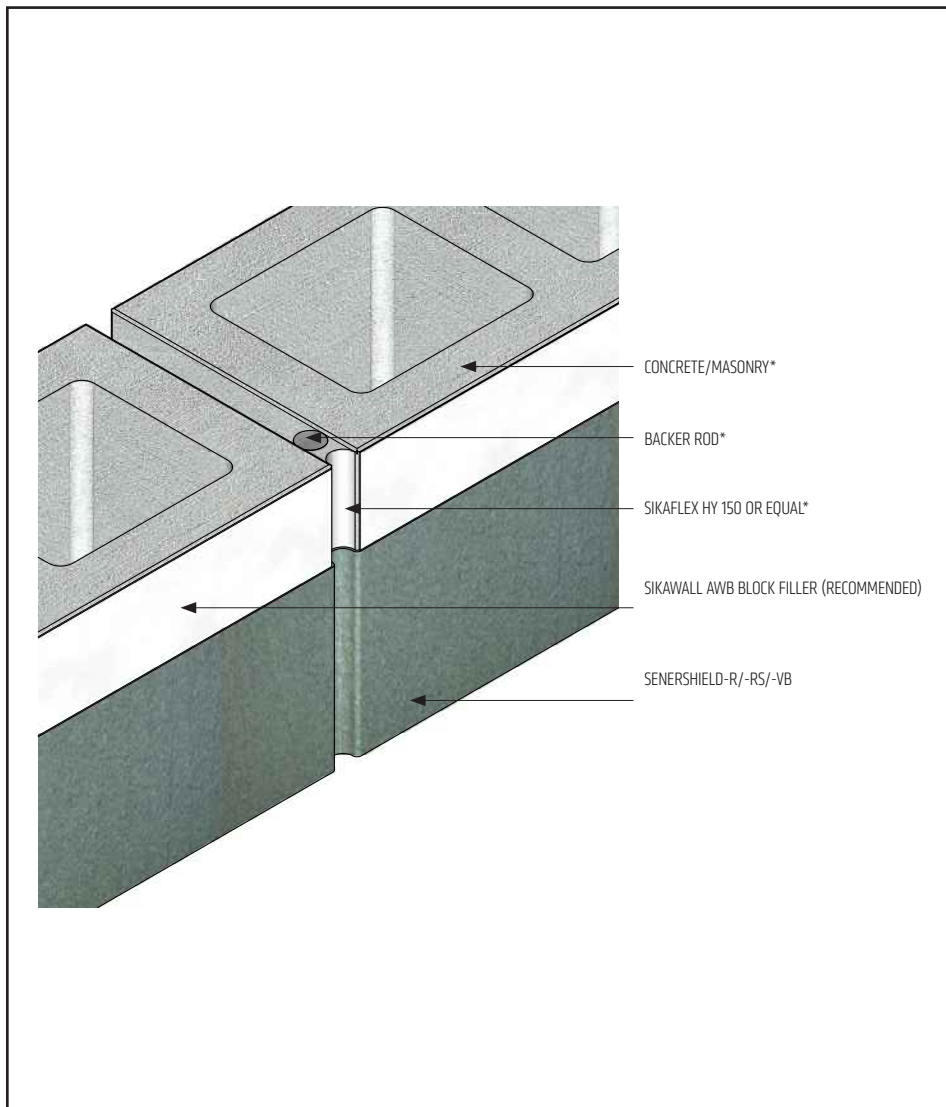
(*NOTE: BY OTHERS)

The details within are latest recommendations and are represent in good faith by Sika Corporation US (hereinafter Sika). The details are subject to change without notice. Sika accepts no liability for the end use of the details. For conditions not shown, consult Sika for review of specific details.

- Install Sika materials in accordance with current installation instructions.
- Unsatisfactory conditions shall be reported to the General Contractor and corrected before the application of Sika products.

Senershield-R/-RS/-VB

TYPICAL CONTROL OR EXPANSION JOINT (BACKER ROD & SEALANT ONLY)



- Senershield-R/-RS/-VB is not required on sealant joint.

CMU-02 2401

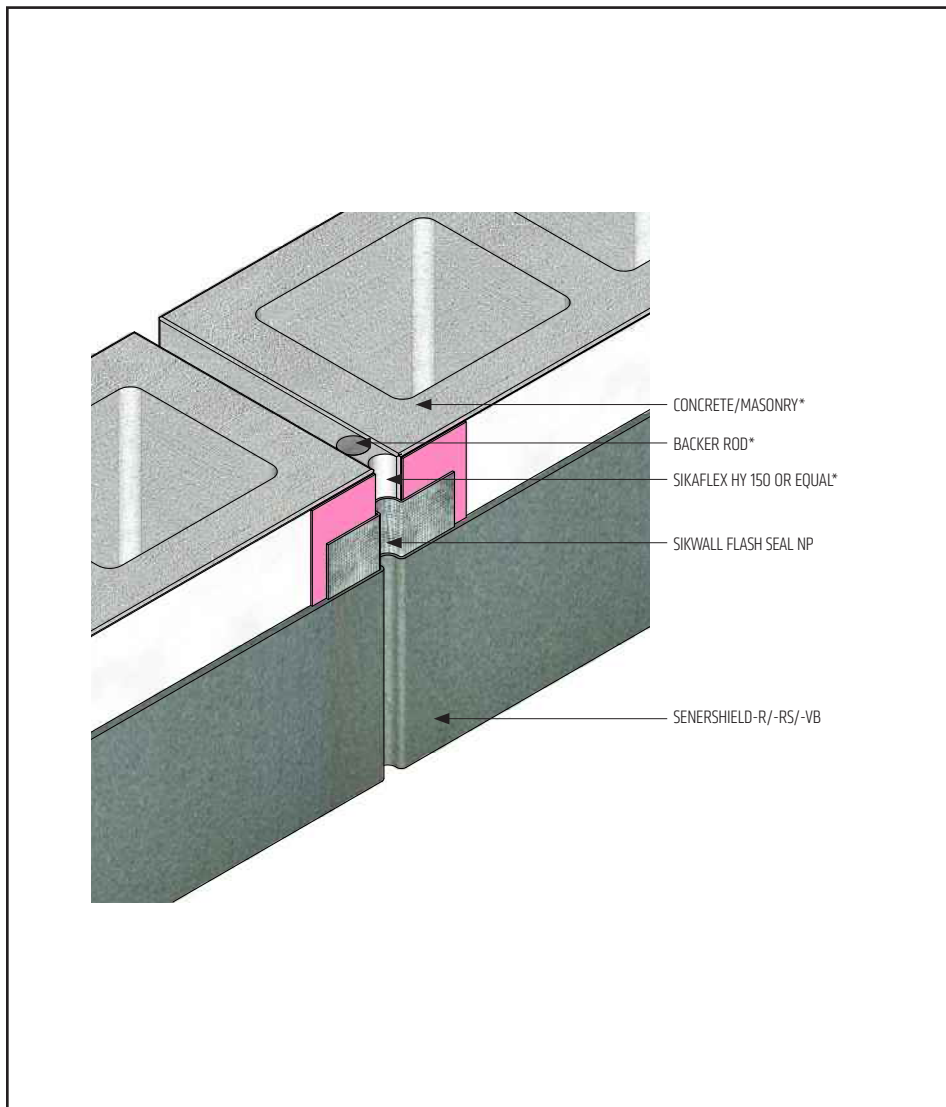
(*NOTE: BY OTHERS)

The details within are latest recommendations and are represent in good faith by Sika Corporation US (hereinafter Sika). The details are subject to change without notice. Sika accepts no liability for the end use of the details. For conditions not shown, consult Sika for review of specific details.

- Install Sika materials in accordance with current installation instructions.
- Unsatisfactory conditions shall be reported to the General Contractor and corrected before the application of Sika products.

Senershield-R/-RS/-VB

TYPICAL CONTROL OR EXPANSION JOINT (SIKAWALL FLASH SEAL NP WITH BACKER ROD & SEALANT)



CMU-03 2401

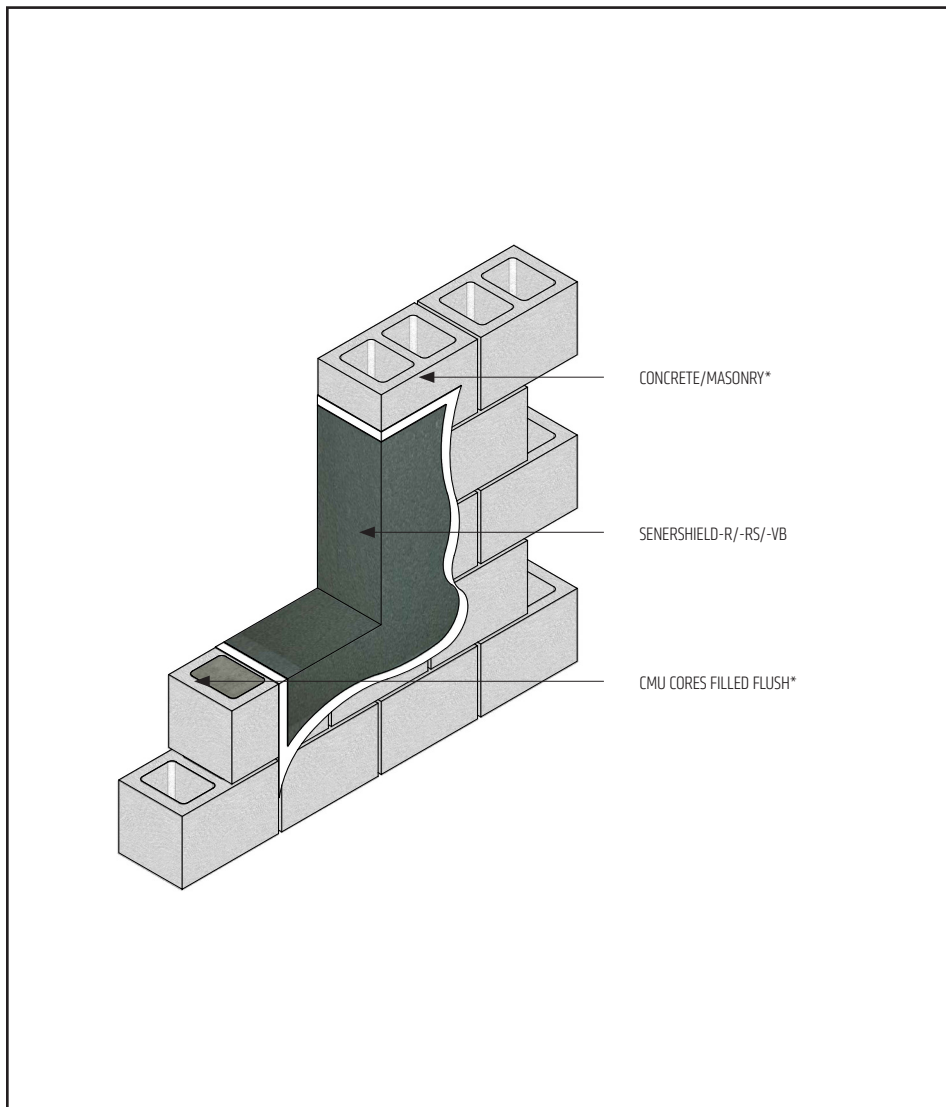
(*NOTE: BY OTHERS)

The details within are latest recommendations and are represent in good faith by Sika Corporation US (hereinafter Sika). The details are subject to change without notice. Sika accepts no liability for the end use of the details. For conditions not shown, consult Sika for review of specific details.

- Install Sika materials in accordance with current installation instructions.
- Unsatisfactory conditions shall be reported to the General Contractor and corrected before the application of Sika products.

Senershield-R/-RS/-VB

TYPICAL ROUGH OPENING TREATMENT



- Ensure continuity of air/water-resistive barrier is maintained.
- Ensure a pinhole-free application of Senershield-R/-RS/-VB is achieved.
- SikaWall Sheathing Fabric or SikaWall Flash Seal NP application is optional at rough opening.

CMU-04 2401

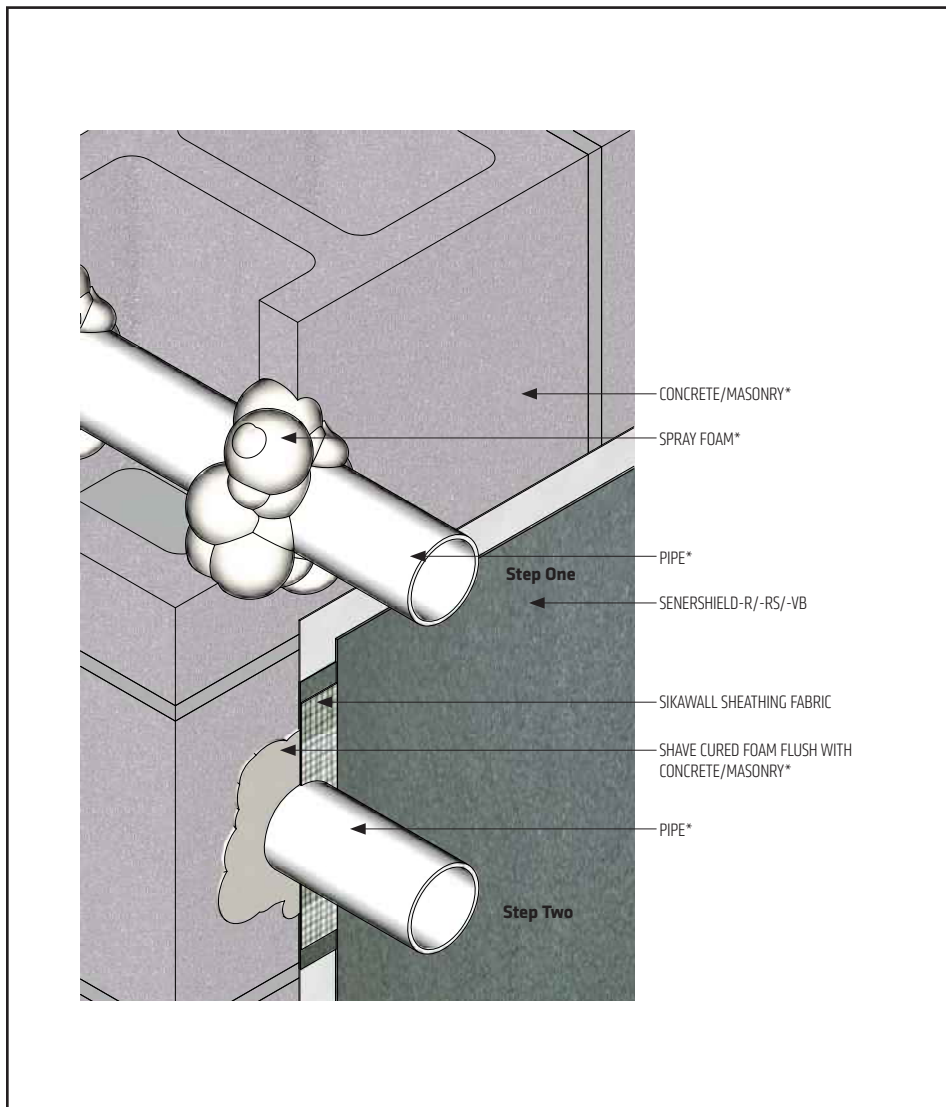
(*NOTE: BY OTHERS)

The details within are latest recommendations and are represent in good faith by Sika Corporation US (hereinafter Sika). The details are subject to change without notice. Sika accepts no liability for the end use of the details. For conditions not shown, consult Sika for review of specific details.

- Install Sika materials in accordance with current installation instructions.
- Unsatisfactory conditions shall be reported to the General Contractor and corrected before the application of Sika products.

Senershield-R/-RS/-VB

TYPICAL PENETRATION THROUGH WALL CONSTRUCTION



- Ensure spray foam is low expansion.
- Embed SikaWall Sheathing Fabric in Senershield-R/-RS/-VB.

CMU-05 2401

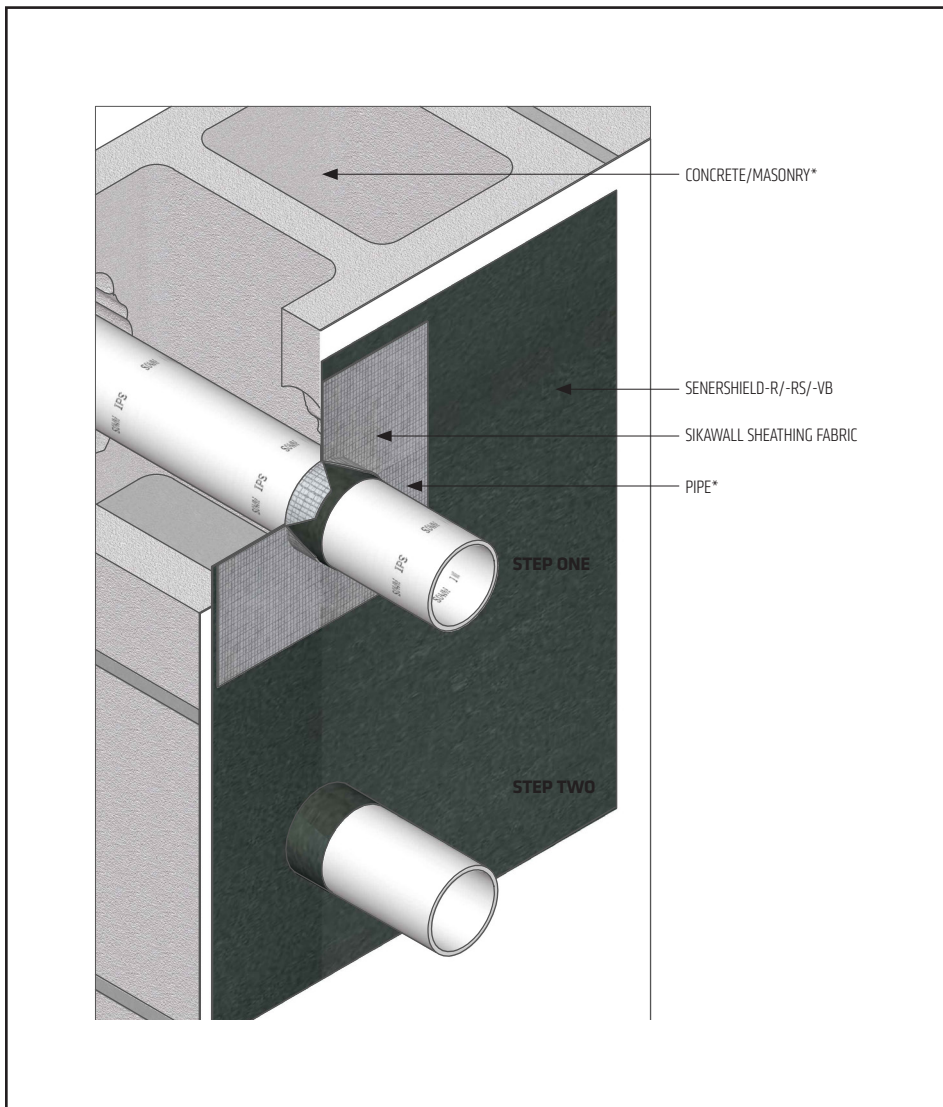
(*NOTE: BY OTHERS)

The details within are latest recommendations and are represent in good faith by Sika Corporation US (hereinafter Sika). The details are subject to change without notice. Sika accepts no liability for the end use of the details. For conditions not shown, consult Sika for review of specific details.

- Install Sika materials in accordance with current installation instructions.
- Unsatisfactory conditions shall be reported to the General Contractor and corrected before the application of Sika products.

Senershield-R/-RS/-VB

TYPICAL PENETRATION THROUGH WALL CONSTRUCTION (FABRIC ONLY)



- Cut a square piece of SikaWall Sheathing Fabric large enough to extend past the pipe by 2" in each direction.
- At the center of the square piece of SikaWall Sheathing Fabric, pierce a small hole with a blade or scissors.
- With a blade or scissors, cut an "X". Turn the square about 45° and cut another X. The center point of both "X"s will be the point you pierced previously.
- Insert the pipe through the newly cut square so it is centered with a minimum of 2" on each side with the cut flaps point outward. The square should be flush with the Concrete/Masonry, See Step 1.
- Embed the SikaWall Sheathing Fabric in Senershield-R/-RS/-VB and coat the flaps around the pipe, See Step 2.
- Wrap a 1" strip of SikaWall Sheathing Fabric embedded in Senershield-R/-RS/-VB around the flaps.

CMU-06 2401

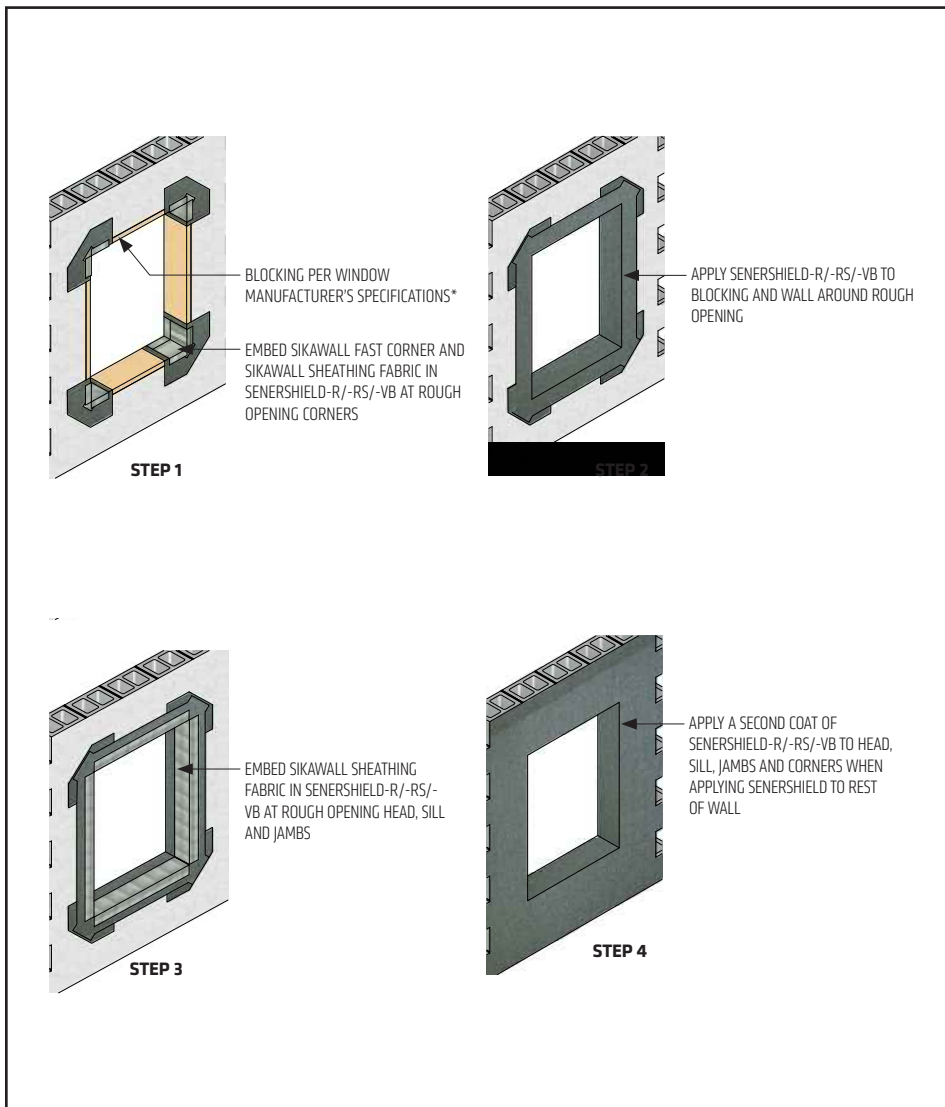
(*NOTE: BY OTHERS)

The details within are latest recommendations and are represent in good faith by Sika Corporation US (hereinafter Sika). The details are subject to change without notice. Sika accepts no liability for the end use of the details. For conditions not shown, consult Sika for review of specific details.

- Install Sika materials in accordance with current installation instructions.
- Unsatisfactory conditions shall be reported to the General Contractor and corrected before the application of Sika products.

Senershield-R/-RS/-VB

TYPICAL ROUGH OPENING TREATMENT WITH BLOCKING AND SHEATHING FABRIC



- Recessed or protruding wood bucks require special consideration.
- Ensure all blocking joints receive a full treatment of Senershield and SikaWall Sheathing Fabric.

CMU-09 2401

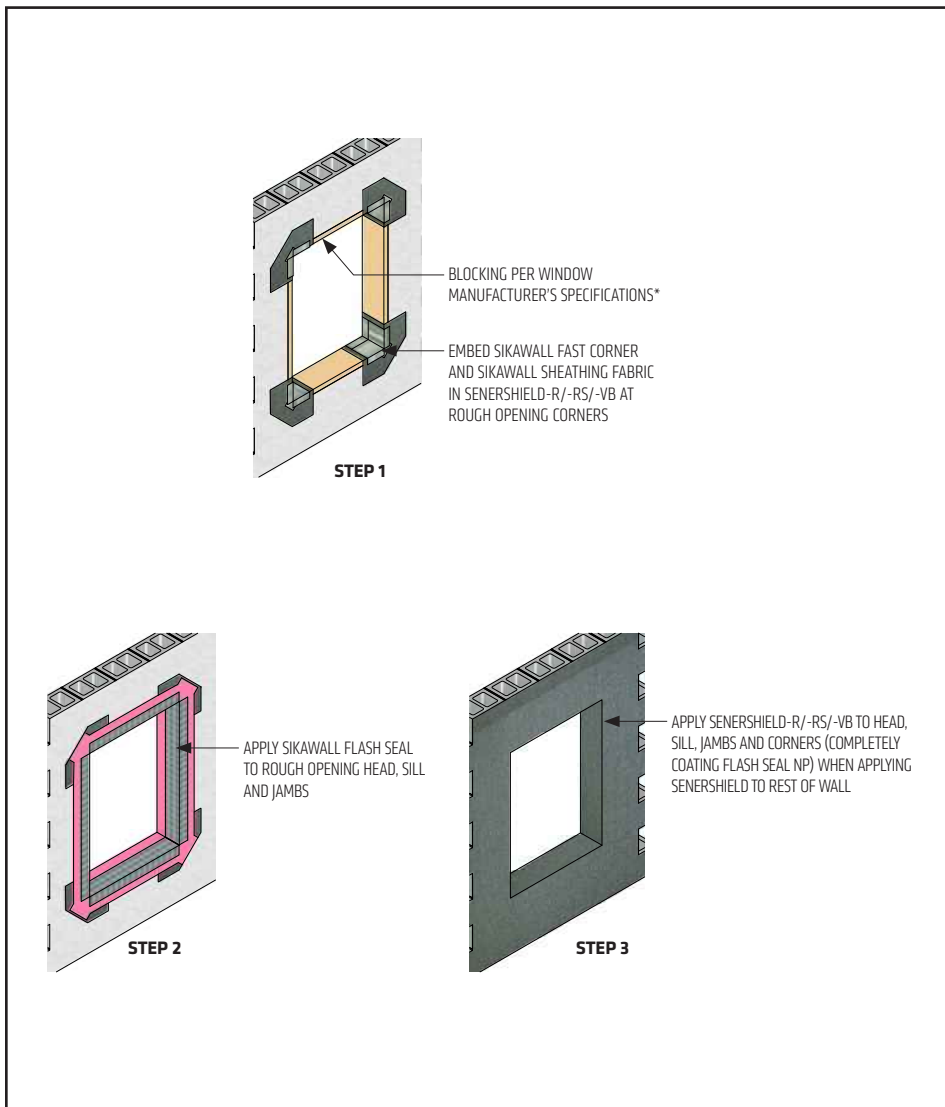
(*NOTE: BY OTHERS)

The details within are latest recommendations and are represent in good faith by Sika Corporation US (hereinafter Sika). The details are subject to change without notice. Sika accepts no liability for the end use of the details. For conditions not shown, consult Sika for review of specific details.

- Install Sika materials in accordance with current installation instructions.
- Unsatisfactory conditions shall be reported to the General Contractor and corrected before the application of Sika products.

Senershield-R/-RS/-VB

TYPICAL ROUGH OPENING TREATMENT WITH BLOCKING AND SIKAWALL FLASH SEAL NP



- Recessed or protruding wood bucks require special consideration.
- Ensure all blocking joints receive a full treatment of Senershield and SikaWall Sheathing Fabric.

CMU-10 2401

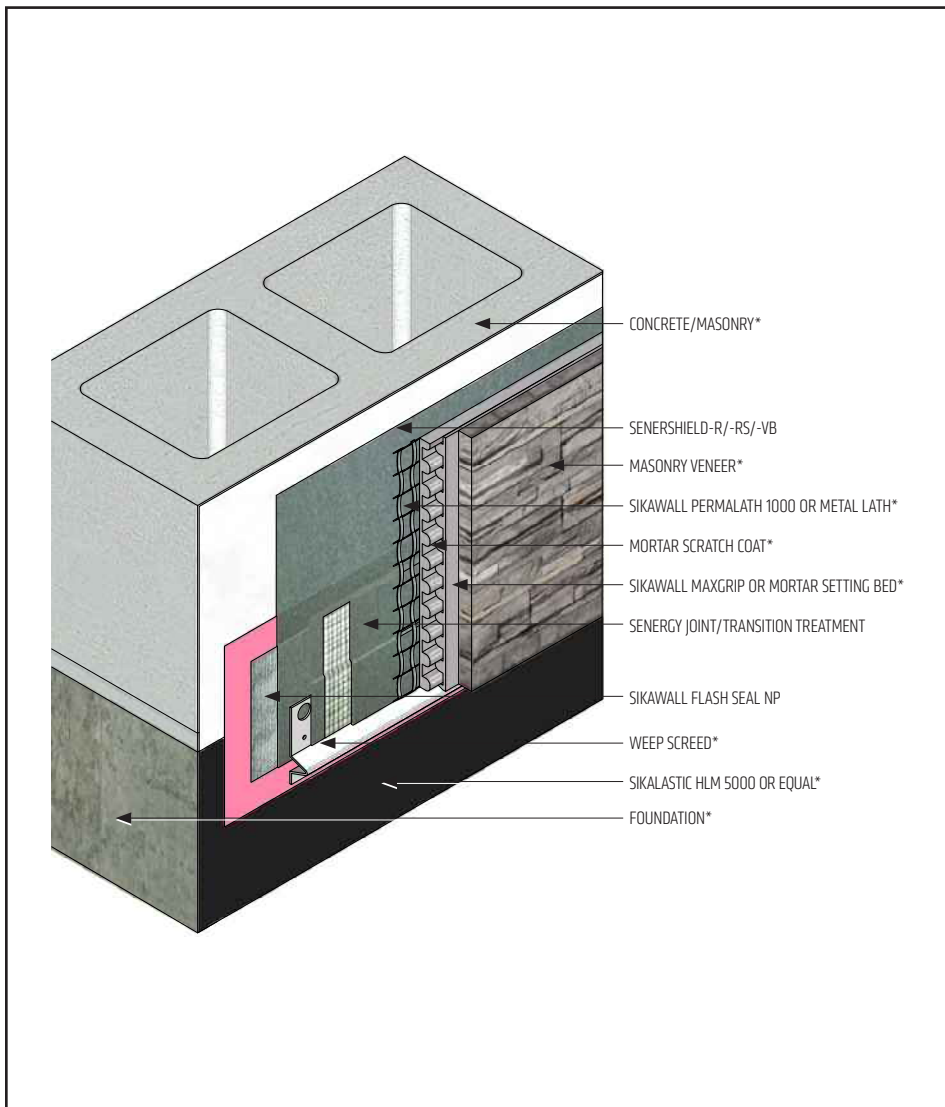
(*NOTE: BY OTHERS)

The details within are latest recommendations and are represent in good faith by Sika Corporation US (hereinafter Sika). The details are subject to change without notice. Sika accepts no liability for the end use of the details. For conditions not shown, consult Sika for review of specific details.

- Install Sika materials in accordance with current installation instructions.
- Unsatisfactory conditions shall be reported to the General Contractor and corrected before the application of Sika products.

Senershield-R/-RS/-VB

TYPICAL TERMINATION AT GRADE-MASONRY VENEER



- Embed SikaWall Sheathing Fabric in Senershield-R/-RS/-VB.
- Paper backed lath can be used in lieu of slip sheet.
- Senergy Joint/Transition Treatment Options: SikaWall MaxFlash, SikaWall Sheathing Fabric embedded in Senershield-R/-RS/-VB or SikaWall Flash Seal NP

CMU-11 2401

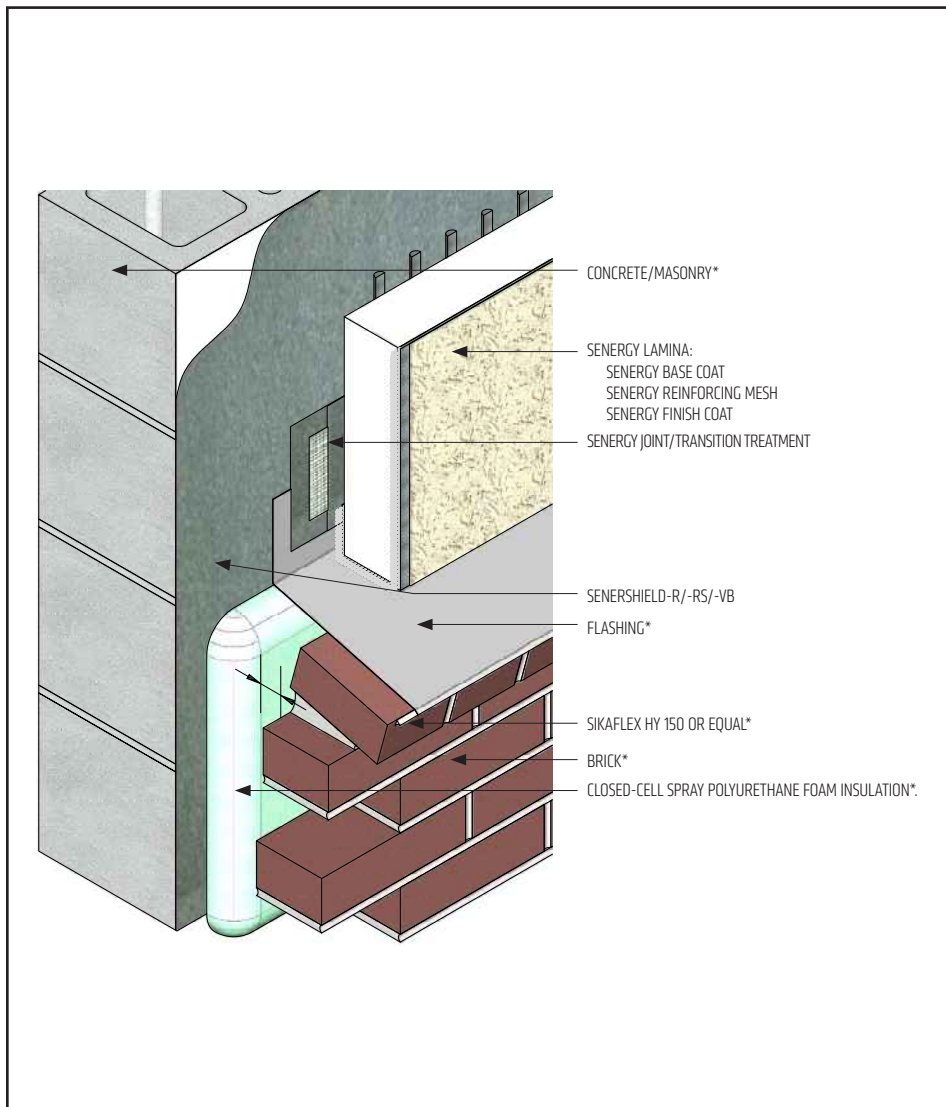
(*NOTE: BY OTHERS)

The details within are latest recommendations and are represent in good faith by Sika Corporation US (hereinafter Sika). The details are subject to change without notice. Sika accepts no liability for the end use of the details. For conditions not shown, consult Sika for review of specific details.

- Install Sika materials in accordance with current installation instructions.
- Unsatisfactory conditions shall be reported to the General Contractor and corrected before the application of Sika products.

Senershield-R/-RS/-VB

TYPICAL EIFS ABUTMENT TO BRICK WITH CONTINUOUS INSULATION



- Senergy Joint/Transition Treatment Options: SikaWall MaxFlash, SikaWall Sheathing Fabric embedded in Senershield-R/-RS/-VB or SikaWall Flash Seal NP
- Up to 12" of EPS thickness can be used with Sika Facades EIFS.

CMU-12 2401

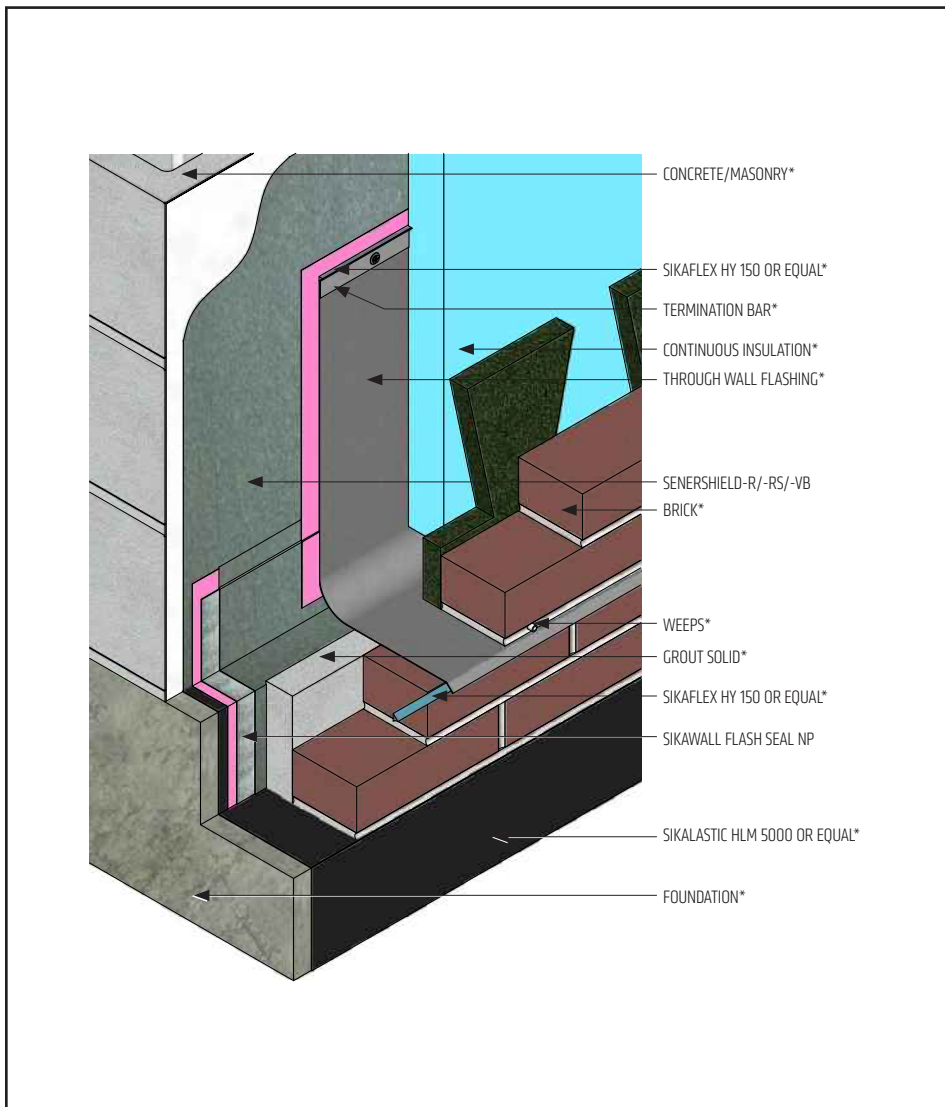
(*NOTE: BY OTHERS)

The details within are latest recommendations and are represent in good faith by Sika Corporation US (hereinafter Sika). The details are subject to change without notice. Sika accepts no liability for the end use of the details. For conditions not shown, consult Sika for review of specific details.

- Install Sika materials in accordance with current installation instructions.
- Unsatisfactory conditions shall be reported to the General Contractor and corrected before the application of Sika products.

Senershield-R/-RS/-VB

TYPICAL TERMINATION AT FOUNDATION WITH BRICK INCORPORATING TWF - TERMINATION BAR



- Air space between masonry /concrete and brick per design (not shown).
- Extend Through Wall Flashing vertically up the wall to 8" (203 mm) minimum height.

CMU-13 2401

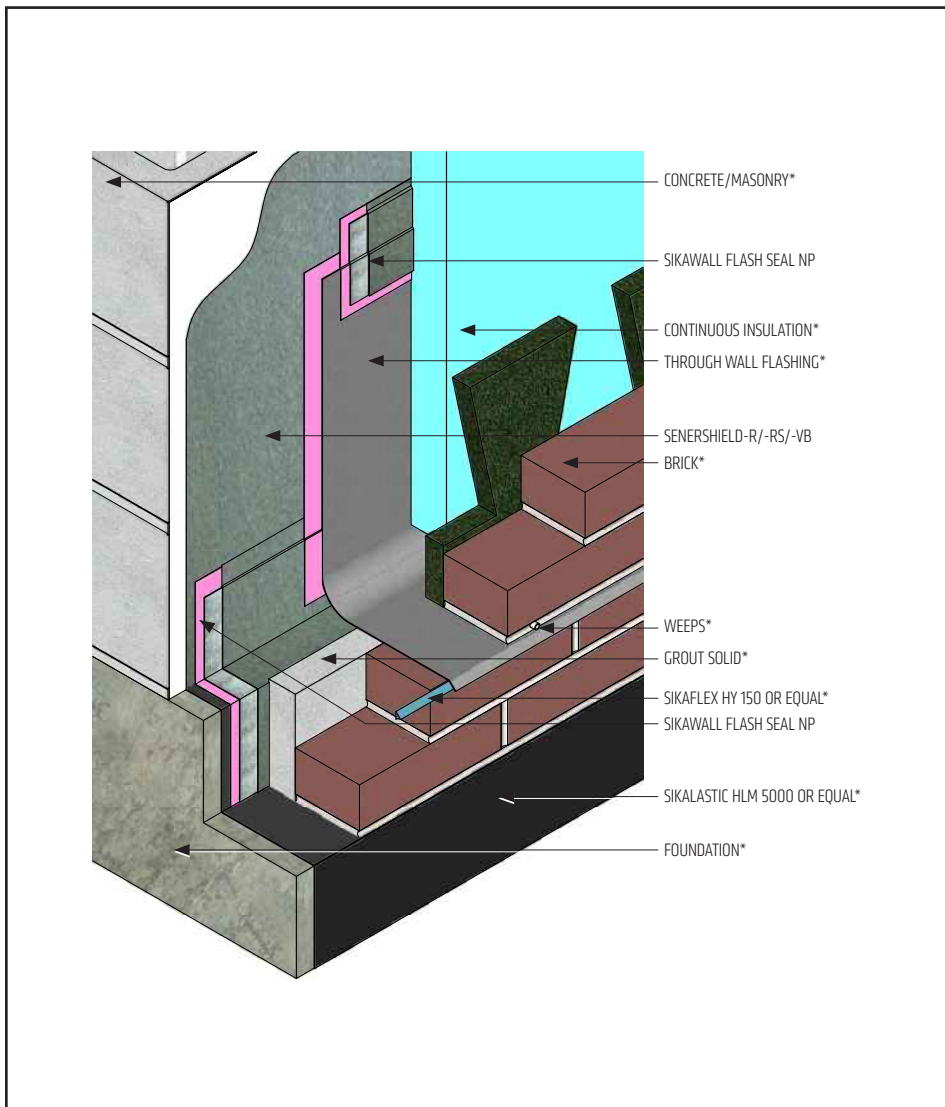
(*NOTE: BY OTHERS)

The details within are latest recommendations and are represent in good faith by Sika Corporation US (hereinafter Sika). The details are subject to change without notice. Sika accepts no liability for the end use of the details. For conditions not shown, consult Sika for review of specific details.

- Install Sika materials in accordance with current installation instructions.
- Unsatisfactory conditions shall be reported to the General Contractor and corrected before the application of Sika products.

Senershield-R/-RS/-VB

TYPICAL TERMINATION AT FOUNDATION WITH BRICK INCORPORATING TWF - SIKAWALL FLASH SEAL NP



- Air space between masonry /concrete and brick per design (not shown).
- Extend Through Wall Flashing vertically up the wall to 203 mm (8") minimum height.

CMU-14 2401

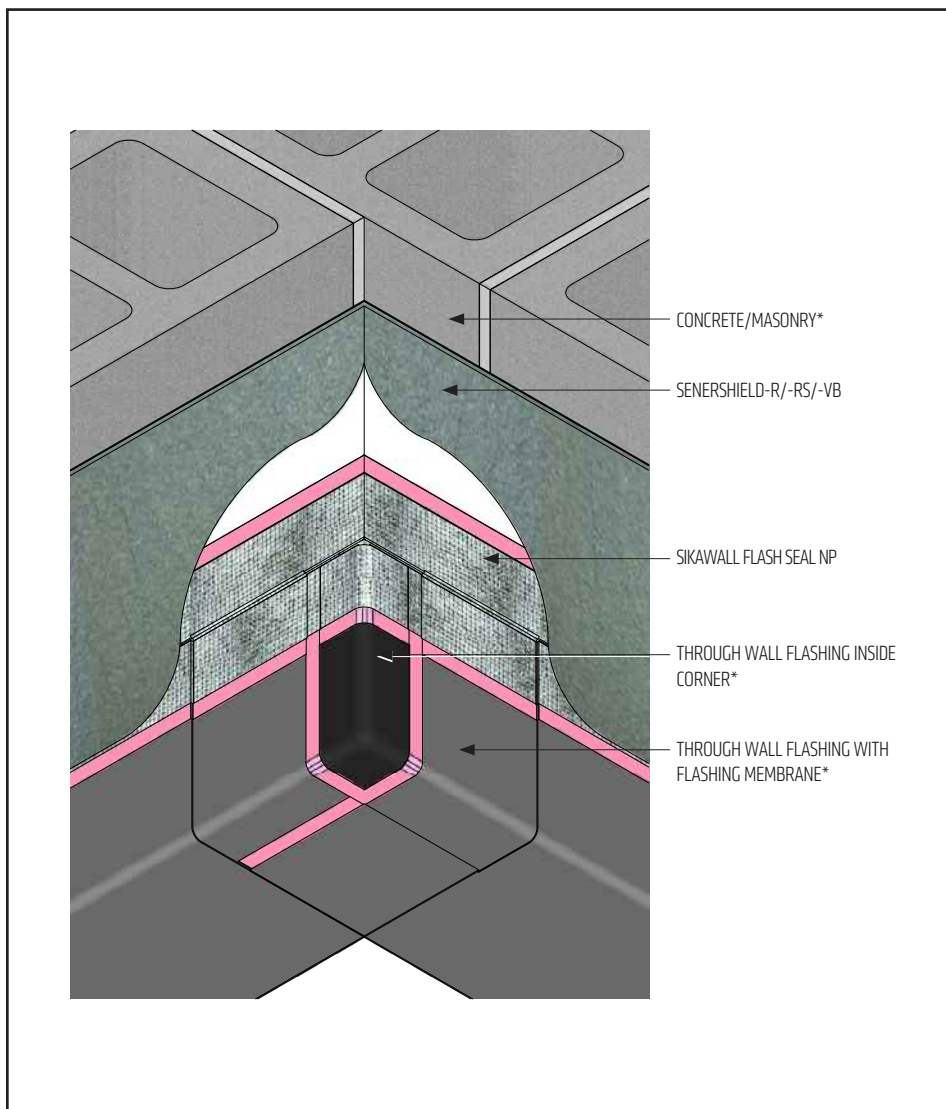
(*NOTE: BY OTHERS)

The details within are latest recommendations and are represent in good faith by Sika Corporation US (hereinafter Sika). The details are subject to change without notice. Sika accepts no liability for the end use of the details. For conditions not shown, consult Sika for review of specific details.

- Install Sika materials in accordance with current installation instructions.
- Unsatisfactory conditions shall be reported to the General Contractor and corrected before the application of Sika products.

Senershield-R/-RS/-VB

TYPICAL INSIDE CORNER



- Lap Through Wall Flashing at least 2" onto Inside Corner.
- Apply a bead of Sikaflex HY 150 sealant between Through Wall Flashing and Inside Corner to create an airtight and watertight seal.
- A termination bar and Sikaflex HY 150 sealant can be used instead of SikaWall Flash Seal NP (See AWRB-CMU-11).
- Center SikaWall Flash Seal NP so half of the width covers Through Wall Flashing and half covers the CMU substrate.

CMU-15 2401

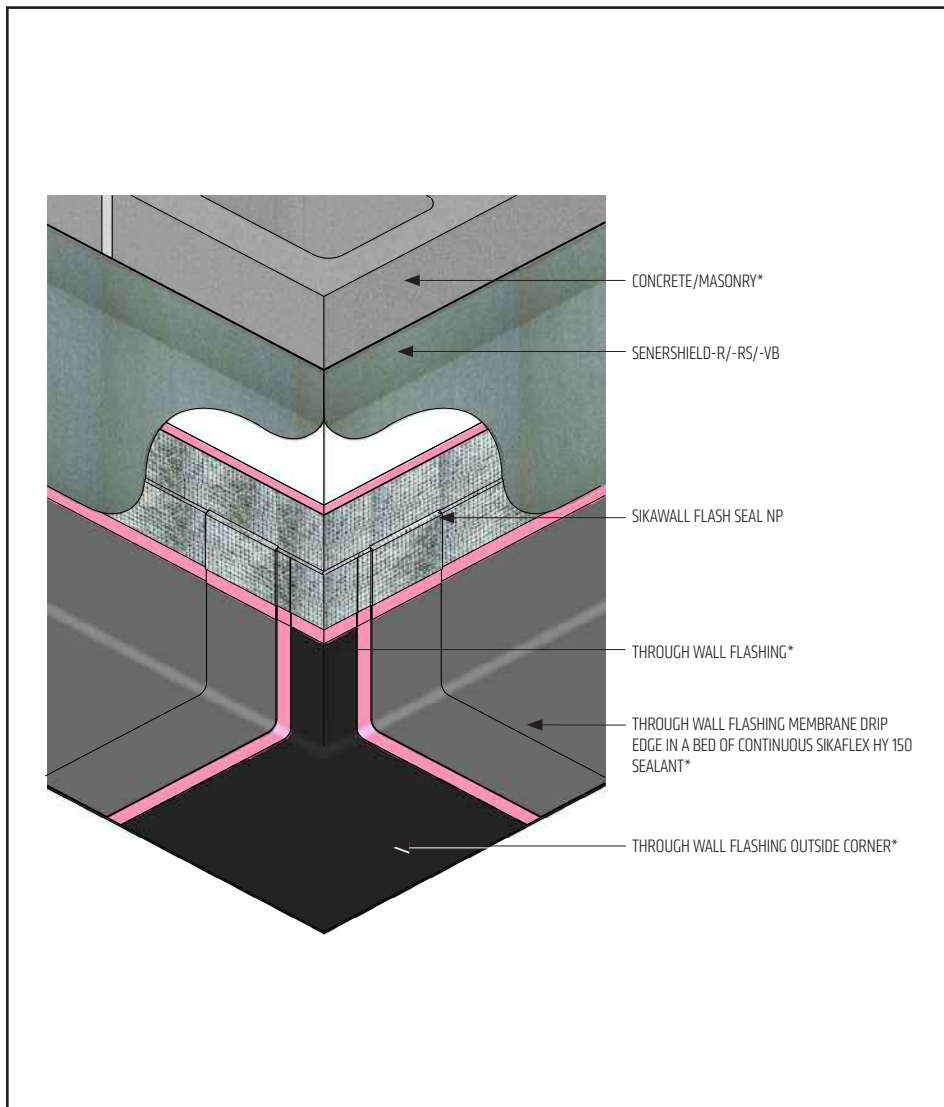
(*NOTE: BY OTHERS)

The details within are latest recommendations and are represent in good faith by Sika Corporation US (hereinafter Sika). The details are subject to change without notice. Sika accepts no liability for the end use of the details. For conditions not shown, consult Sika for review of specific details.

- Install Sika materials in accordance with current installation instructions.
- Unsatisfactory conditions shall be reported to the General Contractor and corrected before the application of Sika products.

Senershield-R/-RS/-VB

TYPICAL OUTSIDE CORNER



- Extend Through Wall Flashing vertically up the wall 8" (not to scale).
- Apply a bead of Sikaflex HY 150 sealant between Through Wall Flashing and Outside Corner to create an airtight and watertight seal.
- Through Wall Flashing can be installed over Senershield-R/-RS/-VB.
- Center SikaWall Flash Seal NP so half of the width covers Through Wall Flashing and half covers the CMU substrate.
- Lap Through Wall Flashing a minimum of 2" over Outside Corner.

CMU-16 2401

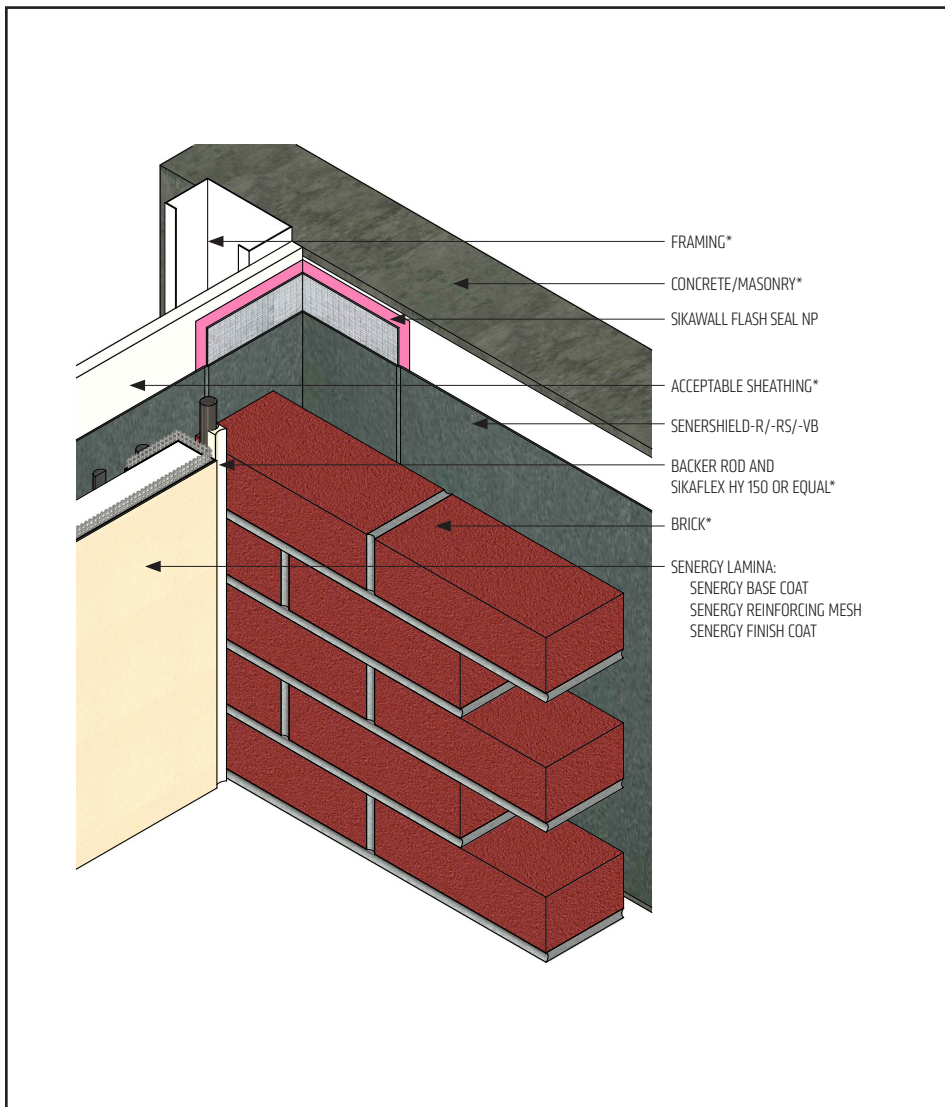
(*NOTE: BY OTHERS)

The details within are latest recommendations and are represent in good faith by Sika Corporation US (hereinafter Sika). The details are subject to change without notice. Sika accepts no liability for the end use of the details. For conditions not shown, consult Sika for review of specific details.

- Install Sika materials in accordance with current installation instructions.
- Unsatisfactory conditions shall be reported to the General Contractor and corrected before the application of Sika products.

Senershield-R/-RS/-VB

TYPICAL INSIDE CORNER CHANGE IN SUBSTRATE



CMU-17 2401

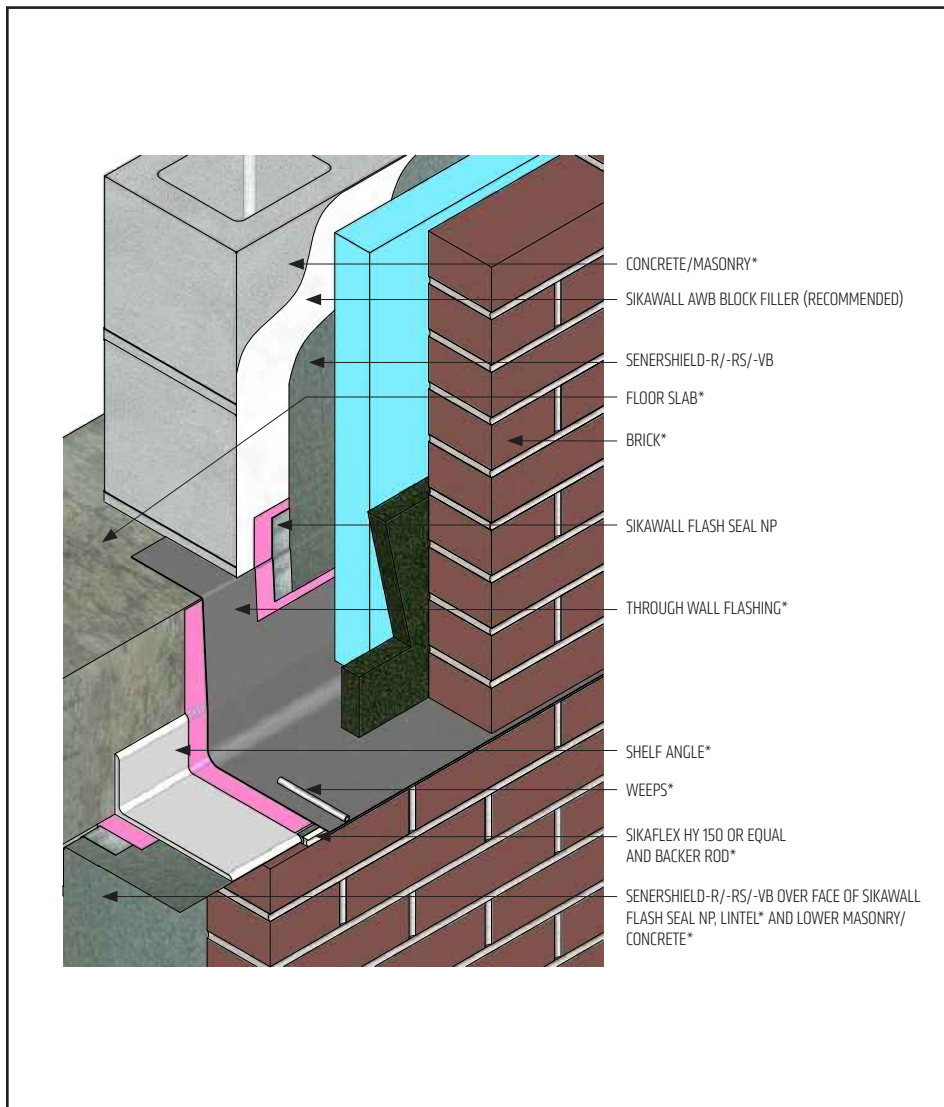
(*NOTE: BY OTHERS)

The details within are latest recommendations and are represent in good faith by Sika Corporation US (hereinafter Sika). The details are subject to change without notice. Sika accepts no liability for the end use of the details. For conditions not shown, consult Sika for review of specific details.

- Install Sika materials in accordance with current installation instructions.
- Unsatisfactory conditions shall be reported to the General Contractor and corrected before the application of Sika products.

Senershield-R/-RS/-VB

TYPICAL TERMINATION AT FLOORLINE- BRICK SHELF ANGLE



- Air space between masonry /concrete and brick per design (not shown).

CMU-18 2401

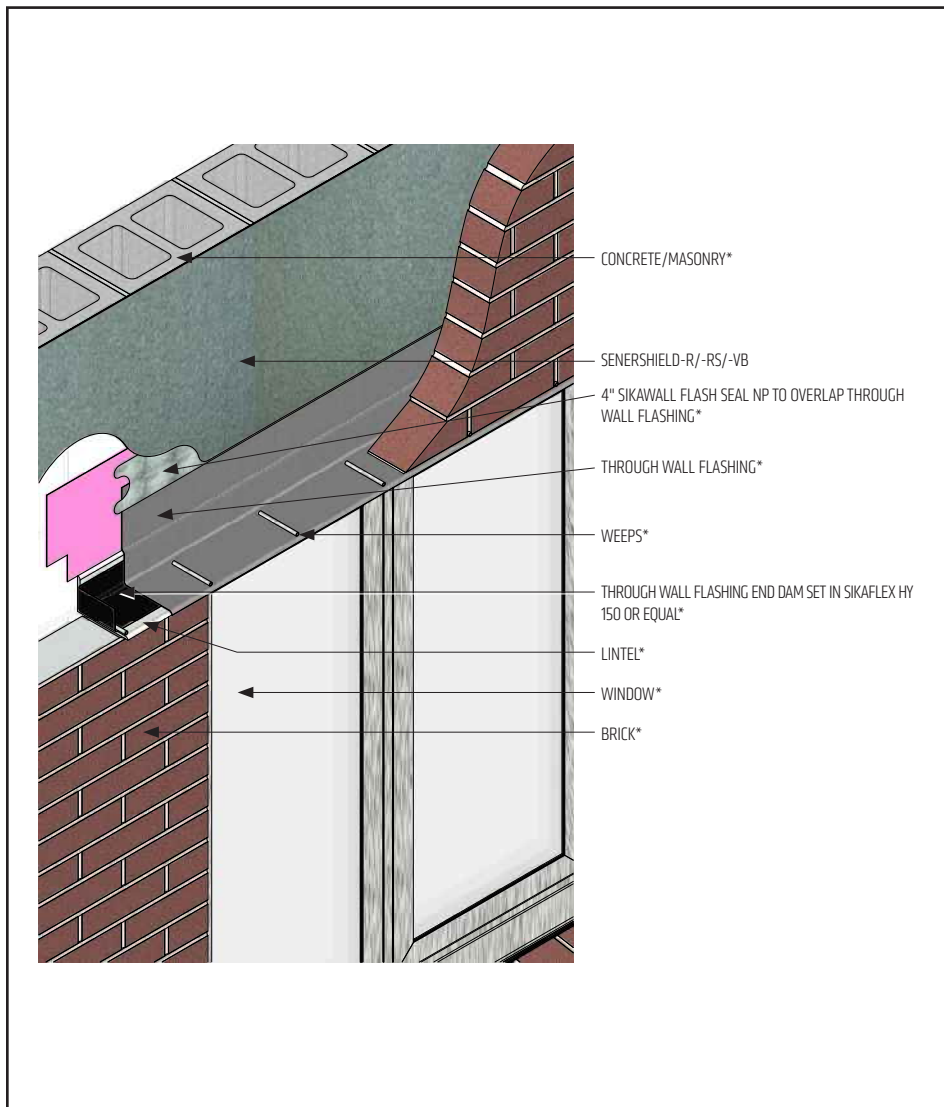
(*NOTE: BY OTHERS)

The details within are latest recommendations and are represent in good faith by Sika Corporation US (hereinafter Sika). The details are subject to change without notice. Sika accepts no liability for the end use of the details. For conditions not shown, consult Sika for review of specific details.

- Install Sika materials in accordance with current installation instructions.
- Unsatisfactory conditions shall be reported to the General Contractor and corrected before the application of Sika products.

Senershield-R/-RS/-VB

TYPICAL THROUGH WALL FLASHING AT HEAD



- Air space between masonry /concrete and brick per design.
- Center Sikawall Flash Seal NP so half of the width covers Through Wall Flashing and half covers the primed substrate.
- Through Wall Flashing can be folded to create an end dam. Ensure that seams are sealed with Sikaflex HY 150 or other method per design.
- If Senershield-R/-RS/-VB is applied before Through Wall Flashing, use SikaWall Flash Seal NP and Senershield-R/-RS/-VB to seal the top edge.

CMU-19 2401

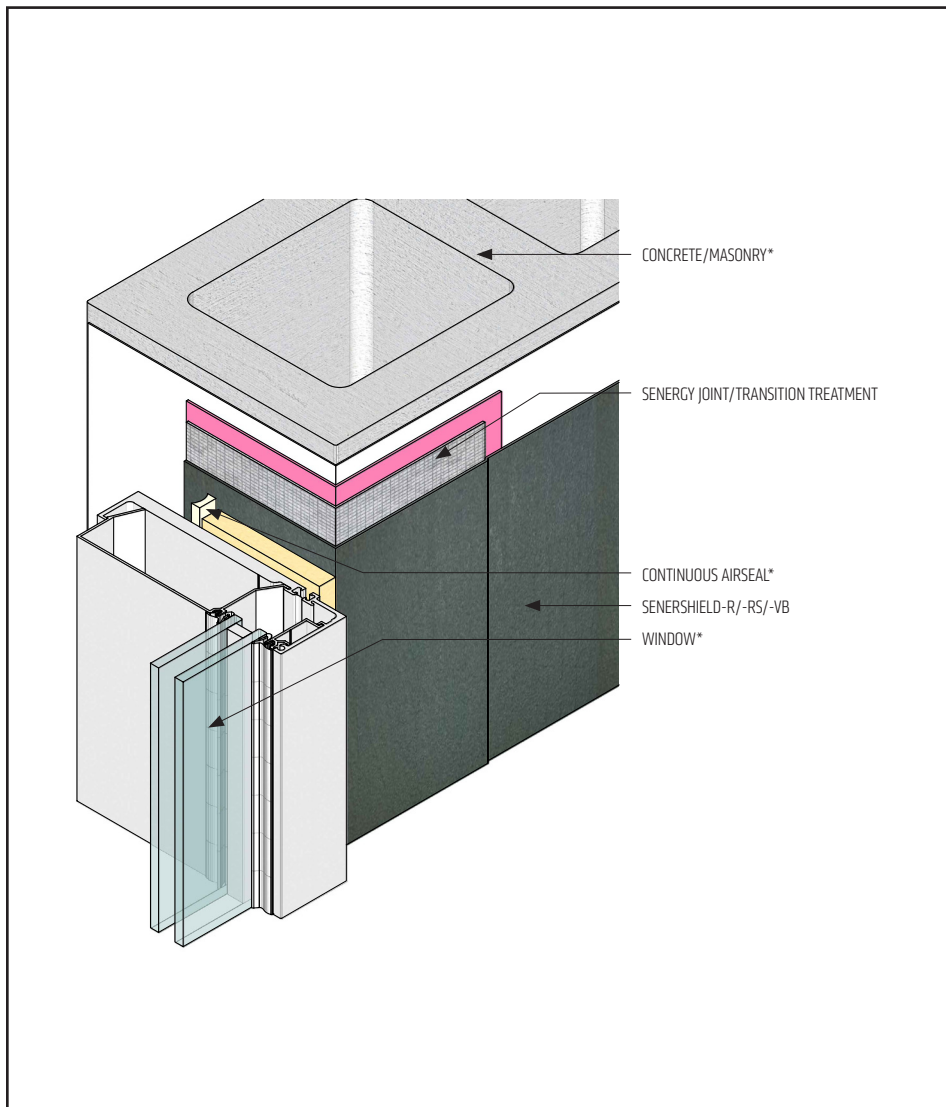
(*NOTE: BY OTHERS)

The details within are latest recommendations and are represent in good faith by Sika Corporation US (hereinafter Sika). The details are subject to change without notice. Sika accepts no liability for the end use of the details. For conditions not shown, consult Sika for review of specific details.

- Install Sika materials in accordance with current installation instructions.
- Unsatisfactory conditions shall be reported to the General Contractor and corrected before the application of Sika products.

Senershield-R/-RS/-VB

TYPICAL WINDOW JAMB



- If blocking is installed prior to Senershield application, it shall be treated as a rough opening; verify adhesion before proceeding. See AWRB-CMU-04, AWRB-CMU-07 and AWRB-CMU-08.
- Senergy Joint/Transition Treatment
Options: SikaWall MaxFlash, SikaWall Sheathing Fabric embedded in Senershield-R/-RS/-VB or SikaWall Flash Seal NP

CMU-20 2401

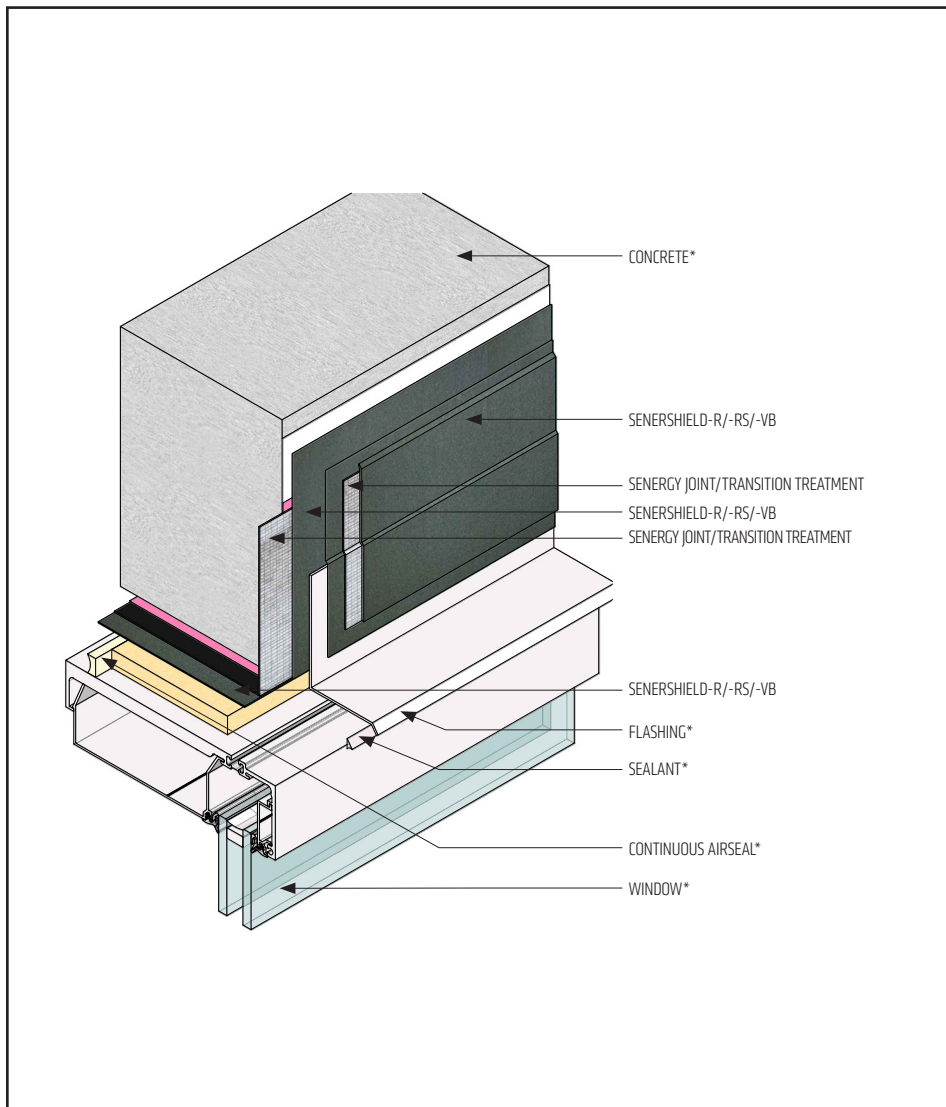
(*NOTE: BY OTHERS)

The details within are latest recommendations and are represent in good faith by Sika Corporation US (hereinafter Sika). The details are subject to change without notice. Sika accepts no liability for the end use of the details. For conditions not shown, consult Sika for review of specific details.

- Install Sika materials in accordance with current installation instructions.
- Unsatisfactory conditions shall be reported to the General Contractor and corrected before the application of Sika products.

Senershield-R/-RS/-VB

TYPICAL WINDOW HEAD



CMU-21 2401

(*NOTE: BY OTHERS)

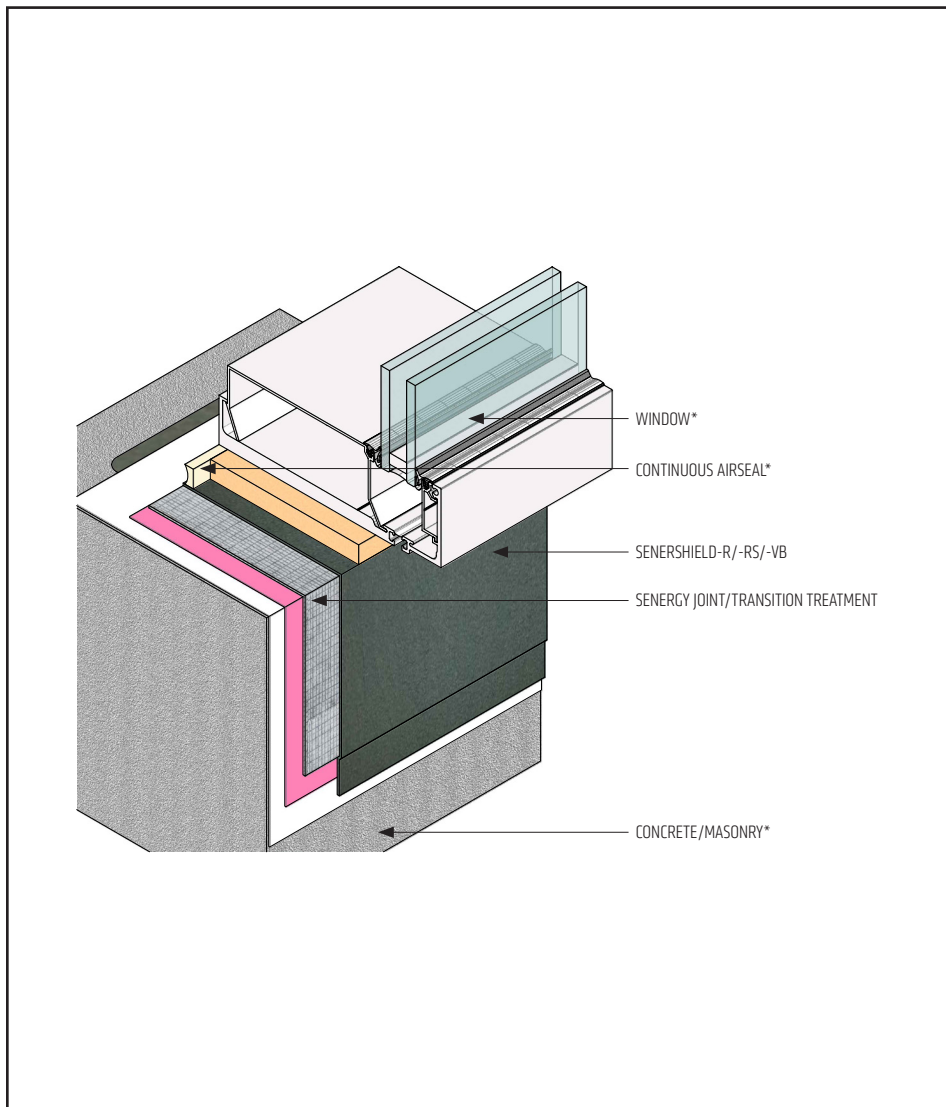
- Provide end dams at flashing terminations.
- If blocking is installed prior to Senershield-R/-RS/-VB application, it shall be treated as a rough opening; verify adhesion before proceeding. See AWRB-CMU-04, AWRB-CMU-07 and AWRB-CMU-08.
- Senergy Joint/Transition Treatment Options: SikaWall MaxFlash, SikaWall Sheathing Fabric embedded in Senershield-R/-RS/-VB or SikaWall Flash Seal NP

The details within are latest recommendations and are represent in good faith by Sika Corporation US (hereinafter Sika). The details are subject to change without notice. Sika accepts no liability for the end use of the details. For conditions not shown, consult Sika for review of specific details.

- Install Sika materials in accordance with current installation instructions.
- Unsatisfactory conditions shall be reported to the General Contractor and corrected before the application of Sika products.

Senershield-R/-RS/-VB

TYPICAL WINDOW SILL



- Install end/back dams as required.
- If blocking is installed prior to Senershield-R/-RS/-VB application, it shall be treated as a rough opening; verify adhesion before proceeding. See AWRB-CMU-04, AWRB-CMU-07 and AWRB-CMU-08.
- Fill CMU cores solid flush.
- Senergy Joint/Transition Treatment Options: SikaWall MaxFlash, SikaWall Sheathing Fabric embedded in Senershield-R/-RS/-VB or SikaWall Flash Seal NP

CMU-22 2401

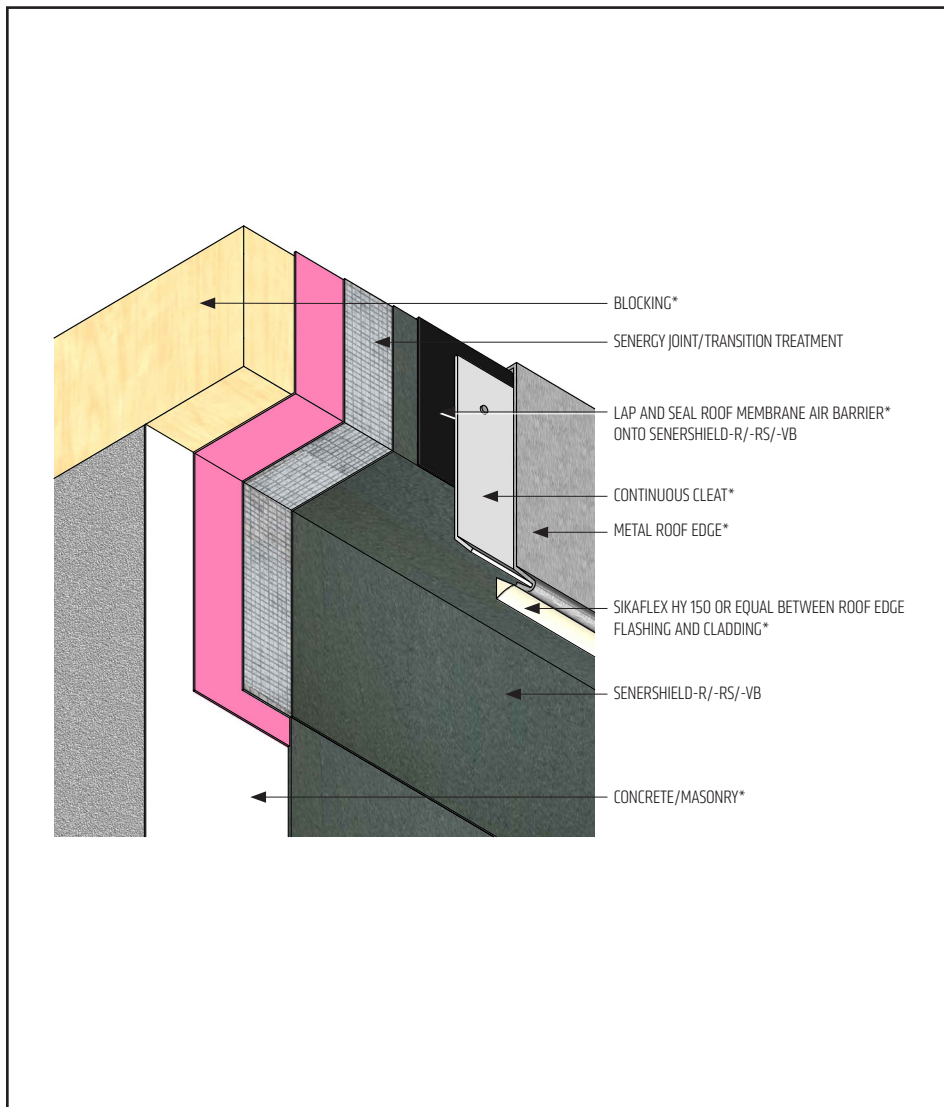
(*NOTE: BY OTHERS)

The details within are latest recommendations and are represent in good faith by Sika Corporation US (hereinafter Sika). The details are subject to change without notice. Sika accepts no liability for the end use of the details. For conditions not shown, consult Sika for review of specific details.

- Install Sika materials in accordance with current installation instructions.
- Unsatisfactory conditions shall be reported to the General Contractor and corrected before the application of Sika products.

Senershield-R/-RS/-VB

TYPICAL ROOF EDGE OR PARAPET CAP FLASHING



- Avoid solvent-based adhesives/primers where roofing laps Senergy.
- Senergy Joint/Transition Treatment Options: SikaWall MaxFlash, SikaWall Sheathing Fabric embedded in Senershield-R/-RS/-VB or SikaWall Flash Seal NP

CMU-23 2401

(*NOTE: BY OTHERS)

The details within are latest recommendations and are represent in good faith by Sika Corporation US (hereinafter Sika). The details are subject to change without notice. Sika accepts no liability for the end use of the details. For conditions not shown, consult Sika for review of specific details.

- Install Sika materials in accordance with current installation instructions.
- Unsatisfactory conditions shall be reported to the General Contractor and corrected before the application of Sika products.



LIMITED WARRANTY NOTICE

Prior to each use of any product of Sika Corporation, its subsidiaries or affiliates ("SIKA"), the user must always read and follow the warnings and instructions on the product's most current product label, Product Data Sheet and Safety Data Sheet which are available at usa.sika.com/senergy or by calling our Technical Service Department at **+1 (800) 589-1336**.

Nothing contained in any SIKA literature or materials relieves the user of the obligation to read and follow the warnings and instructions for each SIKA product as set forth in the current product label, Product Data Sheet and Safety Data Sheet prior to use of the SIKA product.

SIKA warrants this product for one year from date of installation to be free from manufacturing defects and to meet the technical properties on the current Product Data Sheet if used as directed within the product's shelf life. User determines suitability of product for intended use and assumes all risks. User's and/or buyer's sole remedy shall be limited to the purchase price or replacement of this product exclusive of any labor costs. NO OTHER WARRANTIES EXPRESS OR IMPLIED SHALL APPLY INCLUDING ANY WARRANTY OF MERCHANTABILITY OR FITNESS FOR A PARTICULAR PURPOSE. SIKA SHALL NOT BE LIABLE UNDER ANY LEGAL THEORY FOR SPECIAL OR CONSEQUENTIAL DAMAGES. SIKA SHALL NOT BE RESPONSIBLE FOR THE USE OF THIS PRODUCT IN A MANNER TO INFRINGE ON ANY PATENT OR ANY OTHER INTELLECTUAL PROPERTY RIGHTS HELD BY OTHERS. Sale of SIKA products are subject to the Terms and Conditions of Sale which are available at usa.sika.com.

For the most current version of this literature, please visit our website at usa.sika.com/senergy.

Sika Corporation

201 Polito Avenue
Lyndhurst, NJ 07071 USA
Customer Service +1 (800) 433-9517
Technical Service +1 (800) 589-1336
usa.sika.com/senergy

Rev April 2024

BUILDING TRUST

