

SikaColor®-430 Elements®

WATER-BASED STAIN

BUILDING TRUST



SikaColor®-430 Elements® must be applied with an HVLP or pneumatic airless sprayer.

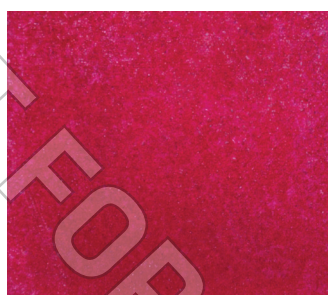
***INDICATES FOR INTERIOR USE ONLY**

COLOR CHART BEST VIEWED IN SUNLIGHT



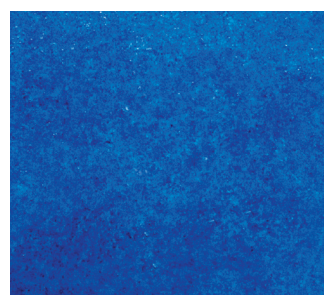
ELE123

Yellow



ELE124

Red*



ELE125

Blue



ELE126

Black



ELE127

Purple*



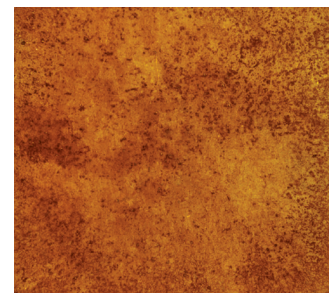
ELE128

Gray



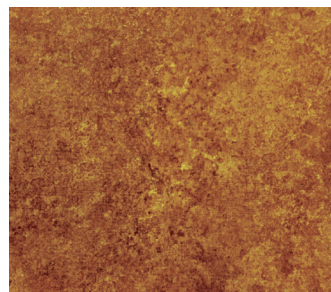
ELE113

Verdigris



ELE111

Tannin



ELE112

Balkan Amber



ELE116

Caribbean



ELE115

Stygian



ELE118

Weathered Bronze



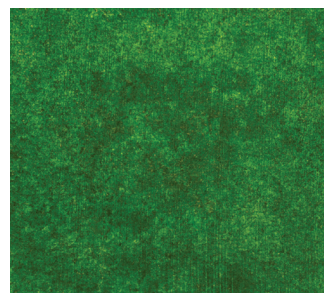
ELE114

Cordovan Leather



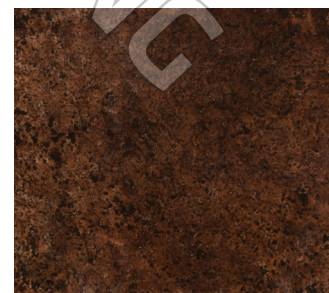
ELE122

Taupe



ELE117

Lichen



ELE119

Kona Brown

Colors shown on this chart approximate the color of the stain when applied to medium gray cement. Concrete color is altered by many factors, including cement and aggregate color, slump, finishing practices, and curing method. Using the contemplated materials and construction techniques, representative samples should be cast for approval, especially when exact color matching is important.

SikaColor®-430 Elements®

WATER-BASED STAIN

SikaColor®-430 Elements® is a low odor, water-based, environmentally and user-friendly concrete stain with low VOC. SikaColor®-430 Elements® represents the latest in nanopigment technology. It is formulated to readily permeate a properly prepared concrete surface and create translucent color variations similar to reactive acid stain. It is an excellent substitute for reactive chemical stains on substrates that are minimally reactive with acid stains or when a color is desired that cannot be produced by an acid stain.

- 18 standard colors
 - Must be applied with HVLP or pneumatic airless sprayer
 - Low VOC, low odor
 - Creates translucent mottled color
 - Expanded color range compared to chemical stain
- Soap and water clean-up
 - Does not contain acid
 - Multiple colors may be used for a more creative effect
 - Can be blended with other colors to create a unique color palette



SIKA CORPORATION
625 West Illinois Avenue
Aurora, IL 60506
Phone: 800 282 3388
usa.sika.com

Our most current General Sales Conditions shall apply.
Please consult the Product Data Sheets prior to any use
and processing.