

Senergy[®]



SYSTEM SELECTION GUIDE

A CODE-COMPLIANT, SYSTEM APPROACH TO EXTERIOR FACADES WITH UNLIMITED AESTHETIC OPTIONS.

BUILDING TRUST



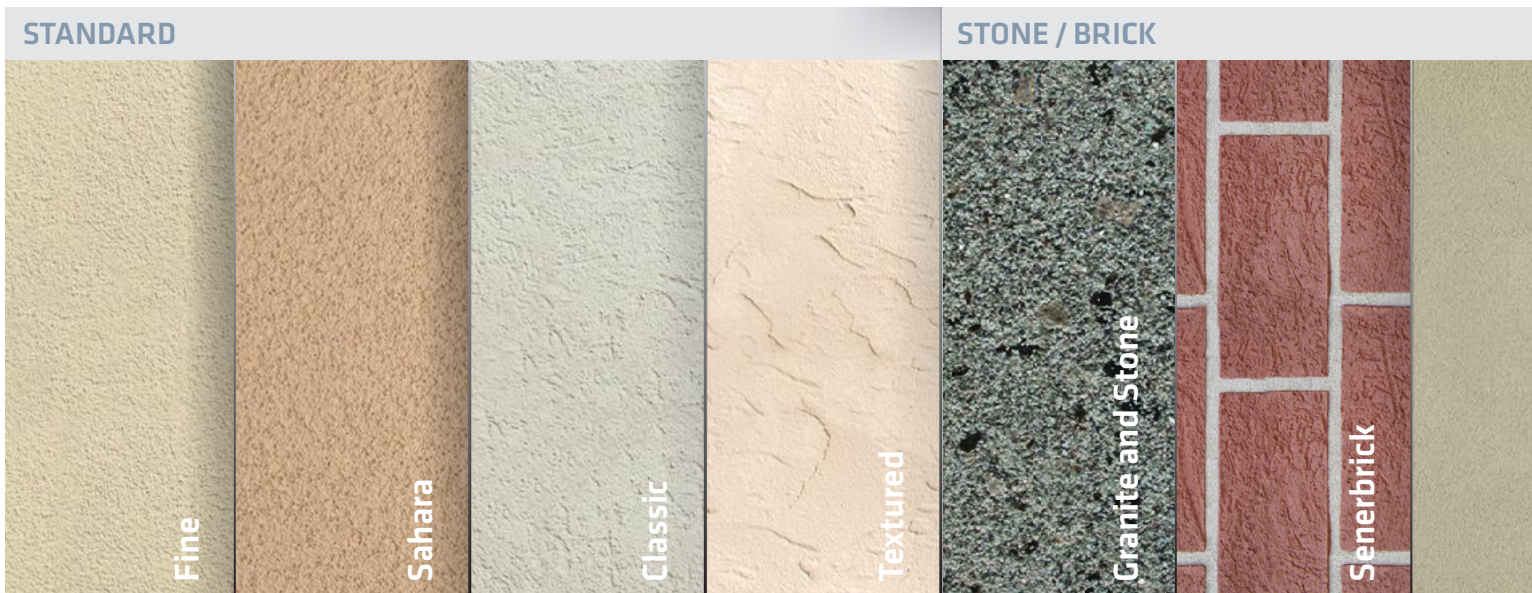
BUILD WITH CONFIDENCE

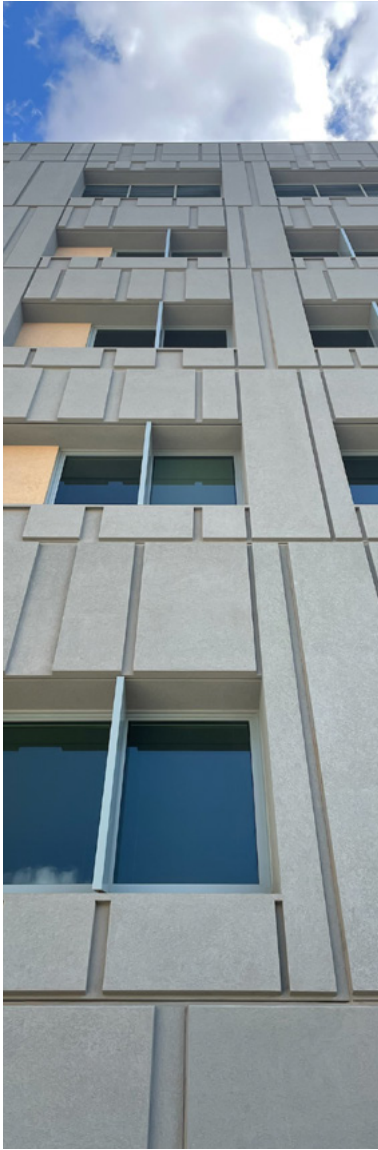
SIKA, IS A LEADING MANUFACTURER OF EIFS, STUCCO, MASONRY VENEER SYSTEMS, AIR AND WATER-RESISTIVE BARRIERS, SPECIALTY ACRYLIC FINISHES, AND COATINGS FOR THE BUILDING ENVELOPE IN NORTH AMERICA. For more than 50 years, we've been a trusted, go-to-resource for durable, code-compliant wall systems and building materials. Our highly knowledgeable team of engineers, scientists, technical and application specialists is dedicated to helping make your building project a success.

As a leading manufacturer of high-performing wall systems for the building enclosure, we offer a wide-range of fully integrated, code-compliant wall systems with a variety of finish options to meet your needs. EIFS systems meet the challenges of multi-cladding construction and sustainability goals, creating the look and feel owners and occupants want, with code compliance and building safety performance required, at a cost that facilitates success. Senergy systems are widely used in new construction and are an ideal choice for restoration or reuse.

SENERGY FINISHES

ACHIEVE THE LOOK AND FEEL YOU WANT





ENERGY EFFICIENCY: Insulated wall systems provide excellent insulation, reducing heating and cooling costs by improving the building's thermal performance. This can lead to significant energy savings over time.



CODE COMPLIANT: Fully tested and evaluated to ensure components work as a code-compliant system, Senergy's EIFS Wall Systems are listed by ICC Evaluation Service in ESR-1878 evaluation report and comply with NFPA 285 standard.



DURABILITY: Senergy wall systems are resistant to harsh weather conditions, impact, and fading from UV exposure. Basecoat and mesh can be used to create highly durable systems while acrylic finishes offer additional protection and longevity to the exterior cladding.



COST-EFFECTIVENESS: EIFS can mimic almost any desired look at a fraction of the cost due to its lighter weight, ease of installation, and potential energy savings. EIFS installation is often quicker compared to traditional masonry or other siding materials, helping to reduce construction time and associated costs.

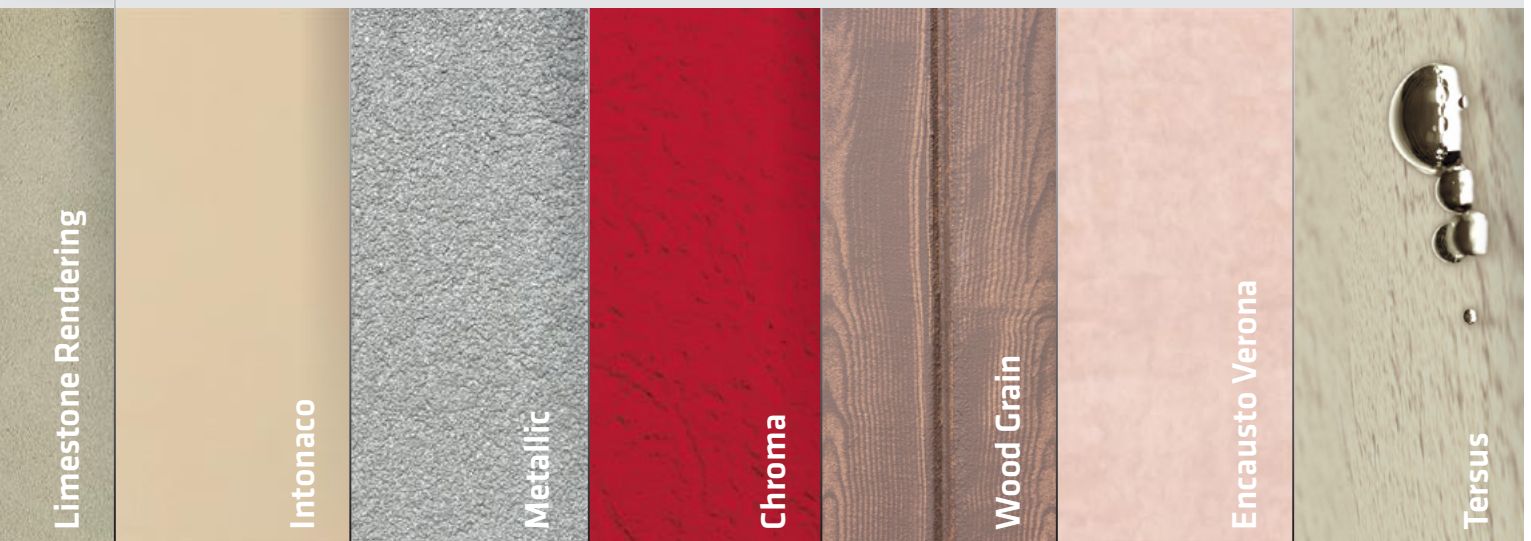


LIMITLESS DESIGN: Senergy systems offers a wide range of colors, textures, and finishes, allowing architects and designers the freedom to achieve virtually any aesthetic vision. It can mimic the appearance of other materials like granite, stone, brick, wood or metal panel.



SUSTAINABLE: Durable, lightweight and energy efficient, EIFS can contribute to LEED certification or other green building standards due to their energy efficiency and sustainability. Visit usa.sika.com/SENERGY for easy access to LEED certifications, Red List Free product lists, and HPDs.

SPECIALTY



Limestone Rendering

Intonaco

Metallic

Chroma

Wood Grain

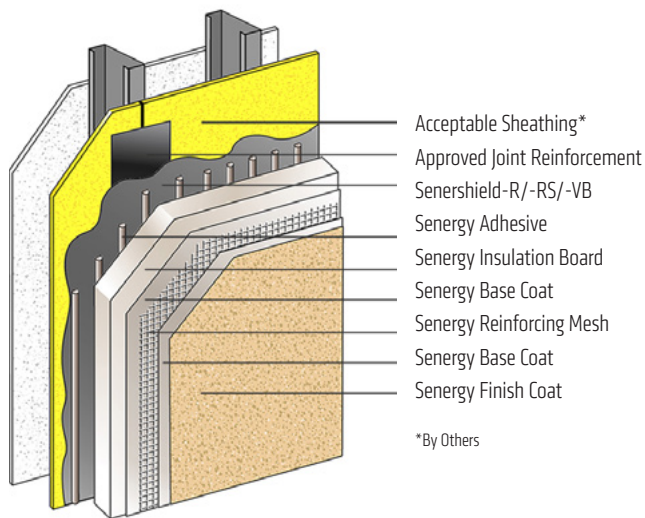
Encausto Verona

Tersus

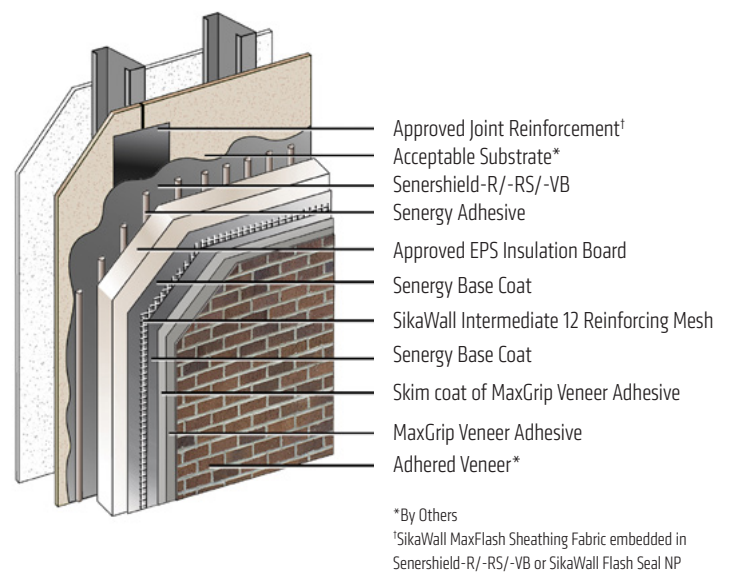
CI WALL SYSTEMS

SENERGY SYSTEMS ARE USED FOR EXTERIOR WALLS IN NEW AND RETROFIT COMMERCIAL AND RESIDENTIAL CONSTRUCTION. They provide a water-resistive barrier, crack resistance and reduced energy costs, where exterior continuous insulation and higher water management are design requirements.

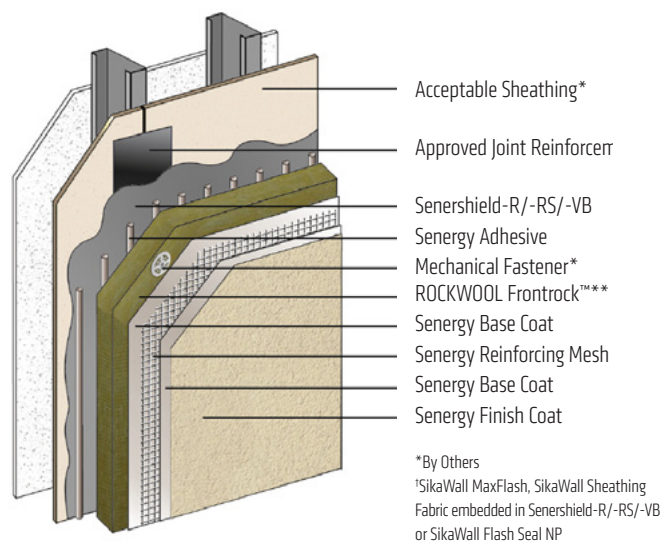
CHANNELED ADHESIVE CI DESIGN



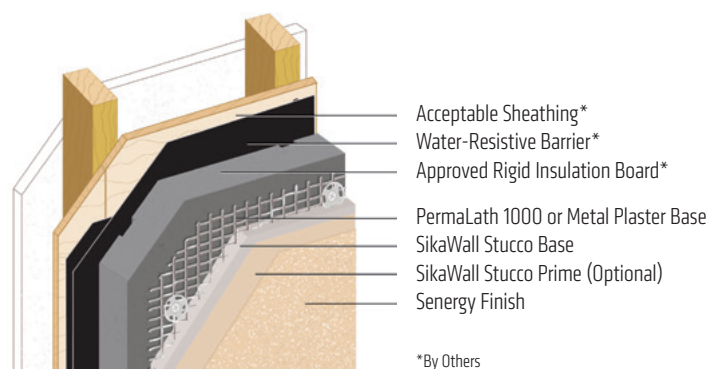
CHANNELED ADHESIVE CI DESIGN WITH MAXGRIP VENEER ADHESIVE



VULCAN NC

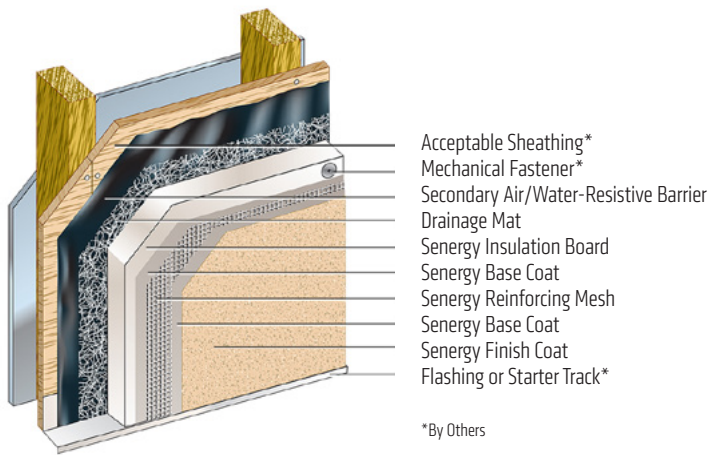


PLATINUM CI

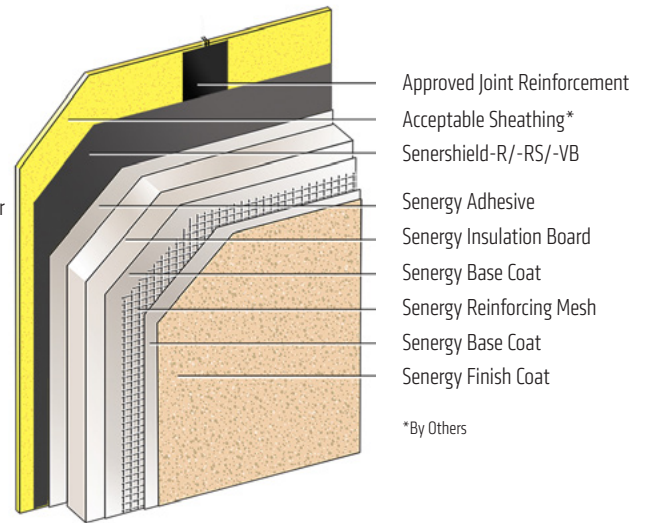




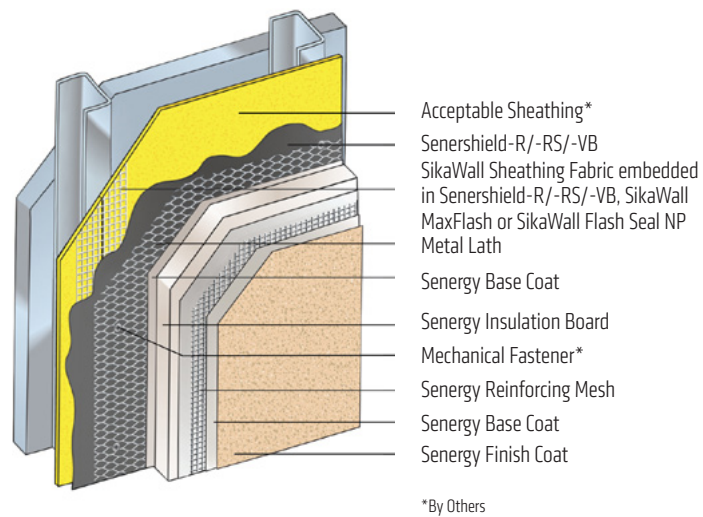
SENTURION III



SECONDARY WEATHER BARRIER



ADHERED MAT DESIGN



SOLUTIONS FOR MULTICLAD DESIGNS



Acceptable substrates*

Approved Joint Reinforcement**

Senershield-R/-RS/-VB

Senergy Adhesive

Approved EPS Insulation Board

Senergy Base Coat

SikaWall®-9000 Intermediate 12
Reinforcing Mesh

Senergy Base Coat

Senergy Senerflex Finish

Skim coat of SikaWall®-1000 MaxGrip Veneer Adhesive

SikaWall®-1000 MaxGrip Veneer Adhesive

Adhered Veneer*

***Acceptable Substrates:** Poured concrete/unit masonry, ASTM C1177 type sheathings, including DensGlass™ or DensElement exterior sheathing (sheathing only), eXP™ sheathing, GlasRoc® sheathing, Securock™ glass-mat sheathing, Weather Defense™ Platinum sheathing, GreenGlass® sheathing; cement-boards (ASTM C1325 Type A Exterior); including PermaBase™ cement-board, Untreated Exposure I or exterior plywood sheathing (grade C-D or better), Untreated Exposure I OSB, Zip Sheathing (sheathing only) Fire Treated wood sheathing; Pyro-Guard® and Dricon® plywood and FlameBlock® OSB; gypsum sheathing (ASTM C79/ASTM C1396).

**SikaWall®-80 MaxFlash, Sheathing Fabric Embedded in Senershield-R/-RS/-VB



SENERGY DESIGNED THE INSULATED MASONRY VENEER SYSTEM TO SPECIFICALLY MEET THE CHALLENGES OF MULTI-CLADDING CONSTRUCTION.

Achieve a multi-cladding aesthetic from masonry veneer to metal, wood, stone and so much more over a continuously insulated (CI), water managed wall system from one manufacturer.

Seamless integration of continuous insulation, weather barrier and drainage ensures optimum heat, air and moisture control. SikaWall®-1000 MaxGrip Veneer Adhesive is strong enough to adhere masonry veneer without the use of mechanical fasteners, keeping these critical control layers intact, which eliminates thermal bridging and reduces the risk of moisture intrusion. Using a Senergy system behind the entire facades eliminates extra work detailing complex transitions between multiple claddings and manufacturers.

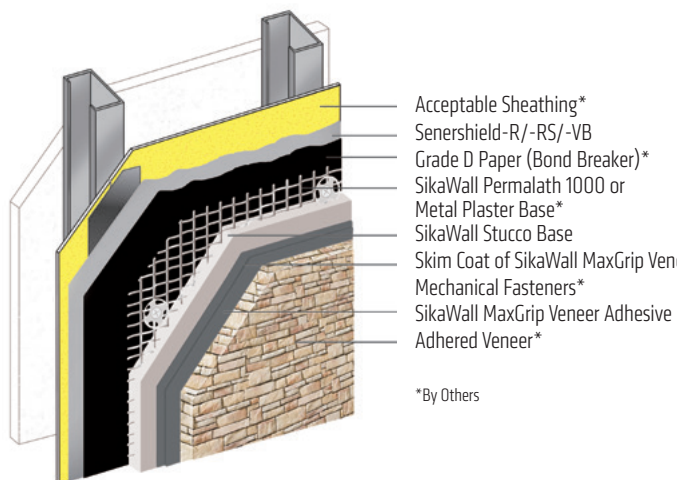


[View Our Projects](#)

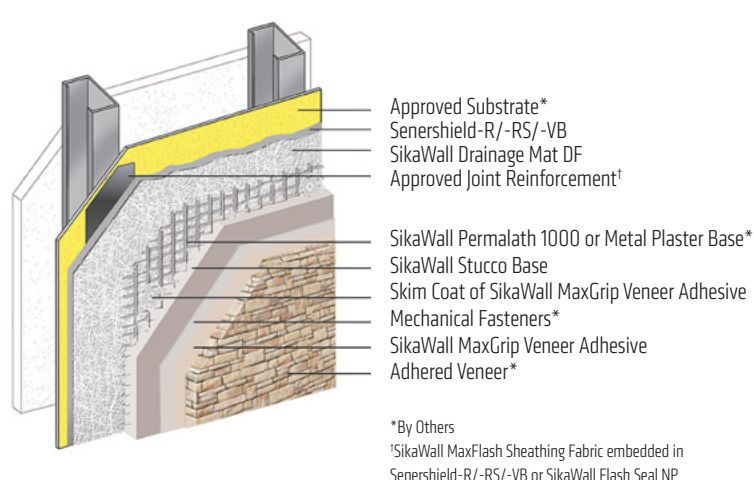
NON-INSULATED MASONRY VENEER SYSTEMS

SIKA'S COMPREHENSIVE PORTFOLIO OF MASONRY VENEER SYSTEMS EMPOWERS YOU to select the system that best meets your building enclosure and exterior finish objectives. SikaWall®-1000 MaxGrip Veneer Adhesive is compatible with a variety of substrates, including cement board, stucco, concrete, CMU, and over Senergy air/water-resistive barriers.

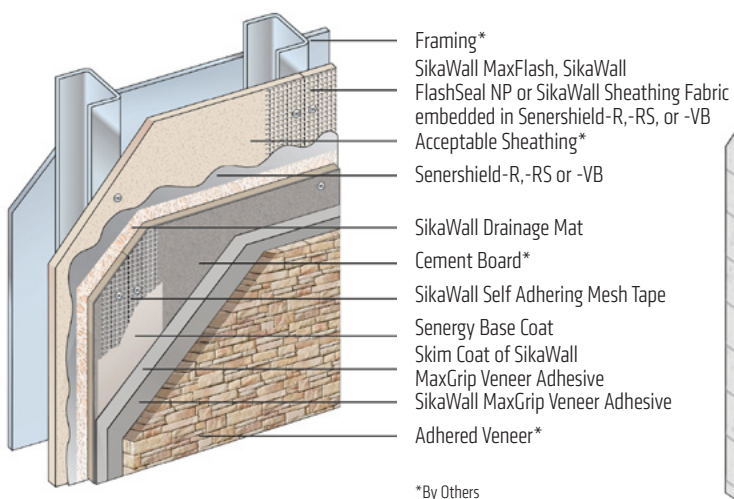
SENTRY STUCCO PLUS WITH MAXGRIP VENEER ADHESIVE



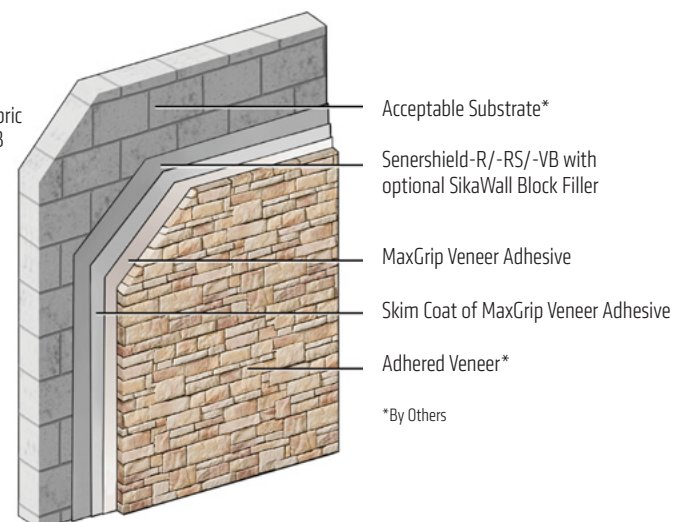
SENTRY STUCCO ULTRA WITH MAXGRIP VENEER ADHESIVE



SENERGY CEMENT BOARD 1000 WITH MAXGRIP VENEER ADHESIVE



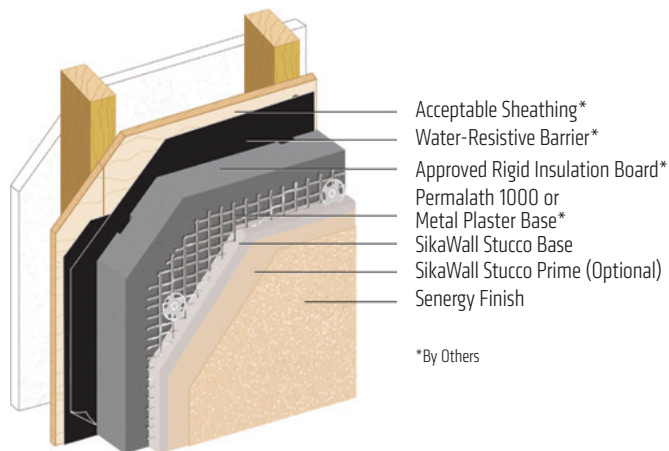
CONCRETE MASONRY UNIT WITH MAXGRIP VENEER ADHESIVE



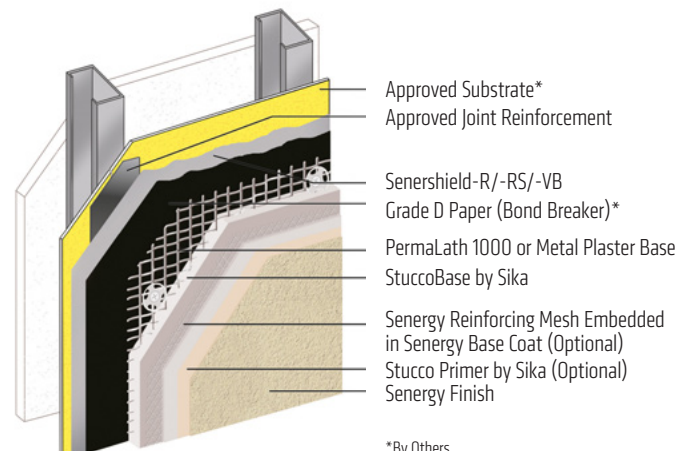
INSULATED STUCCO SYSTEMS

IMPACT AND PUNCTURE RESISTANT, cement plaster/stucco systems used in new or retrofit commercial, institutional and residential construction such as hotels, hospitals, retail centers, schools, multi-family apartments and condominiums, and government facilities.

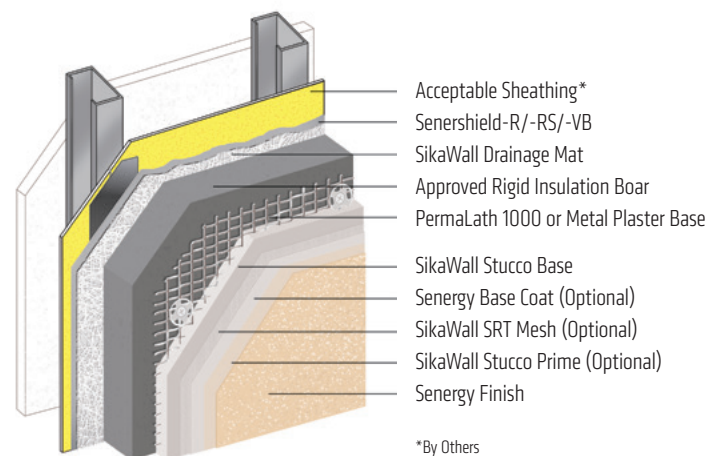
PLATINUM CI STUCCO



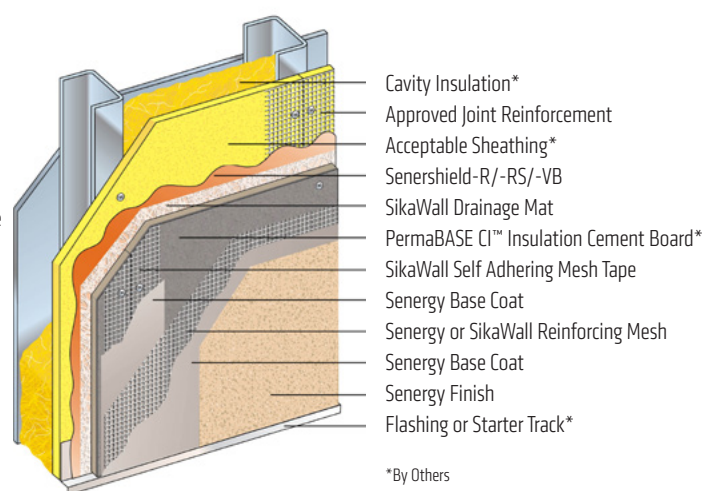
PLATINUM CI STUCCO PLUS



PLATINUM CI STUCCO ULTRA



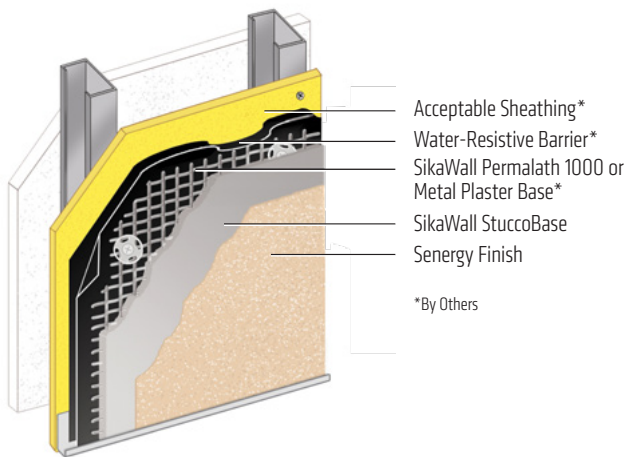
CEMENT BOARD STUCCO 1000 CI



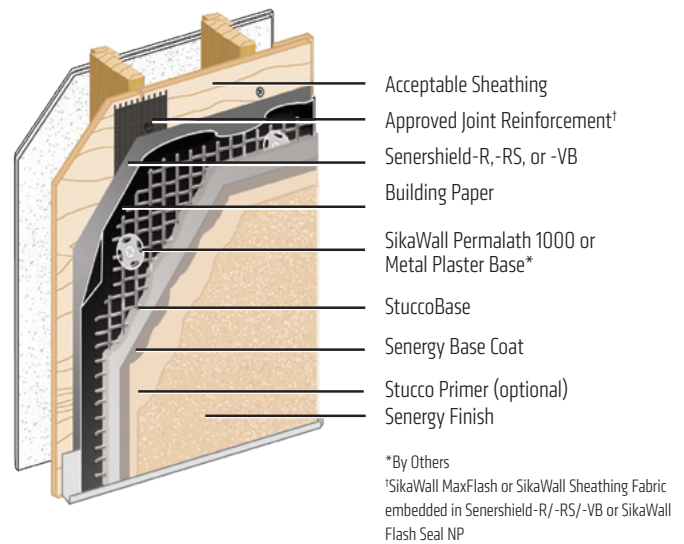
NON-INSULATED STUCCO SYSTEMS



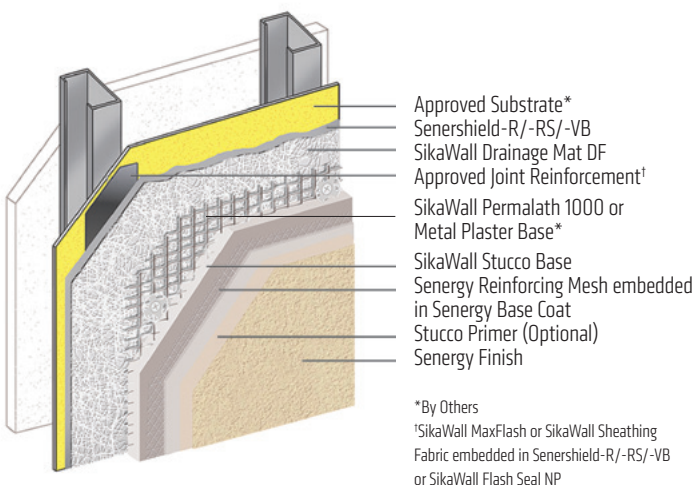
SENTRY STUCCO



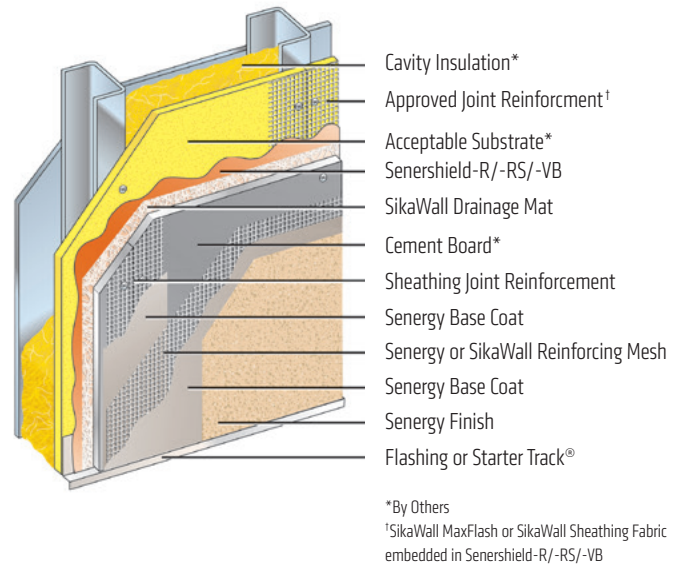
SENTRY STUCCO PLUS



SENTRY STUCCO ULTRA



CEMENT BOARD STUCCO 1000



REFERENCE CHARTS

SENERGY CONTINUOUSLY INSULATED SYSTEMS

DESIGN CRITERIA	Channeled Adhesive Design	Platinum CI	Channeled Adhesive CI Design with MaxGrip	Senerflex Vulcan NC	Senturion Wall Systems	Adhered Mat Design	Secondary Weather Barrier Design
Panelized- prefabricated off site	✓	✓	✓	✓	✓	NOT AVAILABLE	✓
Mechanical Fasteners required	-NO-	✓	-NO-	✓	✓	✓	-NO-
Water Management with Drainage	✓	✓	✓	✓	✓	✓	-NO-
Moisture Drainage Warranted	✓	✓	✓	✓	-NO-	✓*	-NO-
Continuous Insulation	✓	✓	✓	✓	✓	✓	✓
XPS insulation acceptable	-NO-	-NO-	-NO-	-NO-	-NO-	-NO-	NO-
Senergy Senershield AWB Required	✓	✓	✓	✓	-NO-	✓	✓
Control Joint Required	-NO-	-NO-	-NO-	-NO-	-NO-	-NO-	-NO-
Multiple Decorative Finish Options	✓	✓	✓	✓**	✓	✓	✓
MaxGrip Veneer Adhesive Compatible	✓	-NO-	✓	-NO-	-NO-	-NO-	-NO-

*yes, if Senershield is used

**Finish limitations, review system specification

SENERGY STUCCO SYSTEMS

SYSTEM	INSULATED STUCCO SYSTEMS			NON INSULATED STUCCO SYSTEMS			CEMENT BOARD STUCCO SYSTEMS	
	Platinum CI Stucco Ultra	Platinum CI Stucco Plus	Platinum CI Stucco	Sentry Stucco Ultra	Sentry Stucco Plus	Sentry Stucco	Cement Board Stucco 1000	Cement Board Stucco 1000 CI
Panelized- prefabricated off site	-NO-	-NO-	-NO-	-NO-	-NO-	-NO-	-NO-	-NO-
Mechanical Fasteners required	✓	✓	✓	✓	✓	✓	✓	✓
Water Management with Drainage	✓	✓	✓	✓	✓	✓	✓	✓
Moisture Drainage Warranted	✓	-NO-	-NO-	✓	-NO-	-NO-	-NO-	-NO-
Continuous Insulation	✓	✓	✓	-NO-	-NO-	-NO-	-NO-	✓
XPS insulation acceptable	✓	✓	✓	NOT APPLICABLE	NOT APPLICABLE	NOT APPLICABLE	NOT APPLICABLE	-NO-
Senergy Senershield AWB Required	✓	✓	-NO-	✓	✓	-NO-	✓	✓
Control Joint Required	✓	✓	✓	✓	✓	✓	✓	✓
Multiple Decorative Finish Options	✓	✓	✓	✓	✓	✓	✓	✓
MaxGrip Veneer Adhesive Compatible	-NO-	-NO-	-NO-	✓	✓	-NO-	✓	✓



Our most current General Sales Conditions shall apply.
Please consult the Data Sheet prior to any use and processing

© 2024 Sika Corporation, 45219857 rev 07/2024

Sika Corporation
201 Polito Avenue
Lyndhurst, NJ 07071 USA
Customer Service (800) 433-9517
Technical Service (800) 243-6739
usa.sika.com/senergy

BUILDING TRUST

