

Channeled Adhesive CI Design

Adhesively-applied, continuously insulated moisture drainage exterior wall cladding featuring a Senersshield fluid-applied air/water-resistive barrier.

SYSTEM DESCRIPTION

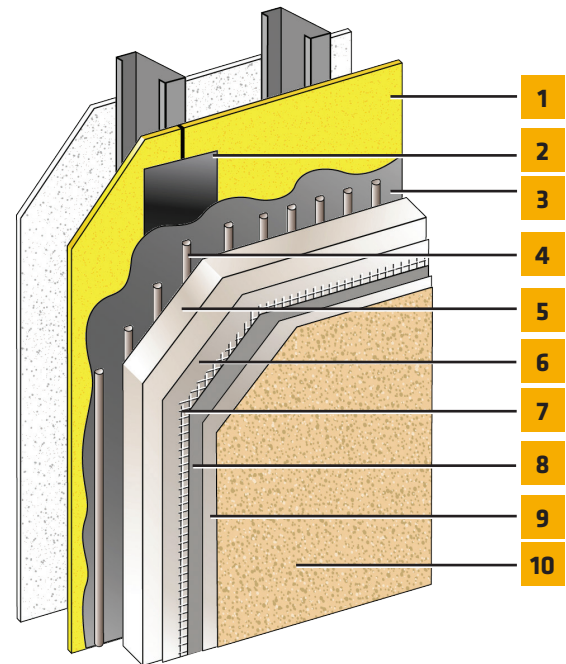
Channeled Adhesive CI Design is a continuously insulated moisture-drainage wall cladding system. It features a Senersshield fluid-applied air/water-resistive barrier, moisture drainage, up to R46 (12" Type I EPS) continuous exterior insulation, optional SikaWall Ultra HI 20 reinforcing mesh and a wide range of finish options.

USES

Channeled Adhesive CI Design may be used in fire-resistance-rated construction and in any construction type (IBC Types I through V), when installed in accordance with Sika instructions.

ACCEPTABLE SUBSTRATES

Poured concrete/unit masonry; ASTM C1177 type sheathings, including DensGlass™ exterior sheathing, DensElement™ (sheathing only), eXP™ sheathing, GlasRoc® sheathing, Securock™ glass-mat sheathing, Weather Defense™ Platinum sheathing, GreenGlass® sheathing; cement-boards (ASTM C1325 Type A Exterior) including PermaBase™ cement-board; untreated Exposure I or exterior plywood sheathing (grade C-D or better); untreated Exposure I OSB, Huber Zip (sheathing only); Fire Treated wood sheathing; Pyro-Guard® and Dricon® plywood and FlameBlock® OSB; gypsum sheathing (ASTM C79/ASTM C1396).



1. Acceptable substrate*
2. SikaWall Joint Treatment: Sheathing Fabric, MaxFlash or Flash Seal NP
3. Senersshield-R/-RS/-VB
4. Senergy Adhesive
5. Approved EPS Insulation Board*
6. Senergy Base Coat
7. Senergy or SikaWall Reinforcing Mesh
8. Senergy Base Coat
9. SikaWall Tinted Primer (optional)
10. Senergy Finish Coat

*By Others

CODE COMPLIANCE

Document	Description
ICC-ESR 1878	Complies with IBC and IRC
ASTM E2568 / AC 235	Complies with requirements
ASTM E119	Does not detract from fire rating of base wall
ICC-ESR 2986 (Senersshield-R/-RS)	Air/water-resistive barrier*
NFPA 285/268	Meets requirements for use on fire-resistance-rated construction and in any construction type, including IBC Types I through V
CCMC 13062-R	Complies with National Building Code of Canada
Miami Dade NOAS	Meets Miami Dade hurricane requirements
For testing results, please reference Senerflex Channeled Adhesive CI Design specification.	

*Senersshield-R/-RS/-VB can be used behind all claddings where more than one wall system is specified, creating one continuous AWRB system. This is appropriate whenever Senergy Senerflex Channeled Adhesive CI Design is used with other cladding types on a multi-clad building.

Channeled Adhesive CI Design

MATERIAL SUBSTITUTION

Material substitution will adversely affect system performance and will void all warranty coverage unless approved in writing by Sika Facades Technical Service Team.

DESIGN CONSIDERATIONS

- For use on above grade vertical walls. System must terminate a minimum of 6" (152 mm) above grade.
- Compatible with SikaWall MaxGrip Veneer Adhesive and adhered veneer. Reference Senerflex Channeled Adhesive CI Design with SikaWall MaxGrip Veneer Adhesive system literature.
- Use SikWall Strong 15 or Ultra HI 20 Reinforcing Mesh at ground floor and on other locations where high traffic is expected.
- All substrates must be clean, dry and sound without planar irregularities greater than 1/4" per 10' (6 mm per 3 m).

WARRANTY

Prior to each use of any product of Sika Corporation, its subsidiaries or affiliates ("SIKA"), the user must always read and follow the warnings and instructions on the product's most current product label, Product Data Sheet and Safety Data Sheet which are available at usa.sika.com/senergy or by calling SIKAFacades' Technical Service Department at 1-800-589-1336. Nothing contained in any SIKALiterature or materials relieves the user of the obligation to read and follow the warnings and instructions for each SIKAPRODUCT as set forth in the current product label, Product Data Sheet and Safety Data Sheet prior to use of the SIKAPRODUCT.

SIKA warrants this product for one year from date of installation to be free from manufacturing defects and to meet the technical properties on the current Product Data Sheet if used as directed within the product's shelf life. User determines suitability of product for intended use and assumes all risks. User's and/or buyer's sole remedy shall be limited to the purchase price or replacement of this product exclusive of any labor costs. NO OTHER WARRANTIES EXPRESS OR IMPLIED SHALL APPLY INCLUDING ANY WARRANTY OF MERCHANTABILITY OR FITNESS FOR A PARTICULAR PURPOSE. SIKA SHALL NOT BE LIABLE UNDER ANY LEGAL THEORY FOR SPECIAL OR CONSEQUENTIAL DAMAGES. SIKA SHALL NOT BE RESPONSIBLE FOR THE USE OF THIS PRODUCT IN A MANNER TO INFRINGE ON ANY PATENT OR ANY OTHER INTELLECTUAL PROPERTY RIGHTS HELD BY OTHERS. Sale of SIKAPRODUCTS are subject to the Terms and Conditions of Sale which are available at usa.sika.com.