



COMMERCIAL JOINT SEALING SOLUTIONS

POLYURETHANE, SILICONE, HYBRID AND SPECIALTY SEALANTS

BUILDING TRUST



INNOVATION

Sika is an innovative leader with over 100 years of experience developing and supplying products to the construction industry across a wide range of application areas. This includes Sika's sealant product line which boasts a full range of polyurethane, silicone, silyl-terminated hybrid, polyurea, and polysulfide.

These innovation efforts go beyond the products themselves and extend into all aspects of the business including production. Here they have the capability to increase quality and help deliver overall better products to the market. Sika continues to develop and invest in sealant production to find a solution for most projects.



LEADERSHIP



Sikaflex®-1a and Sikaflex® NP1 have long set the standard for one-component polyurethane sealants in the US. Our innovative base product line has laid the groundwork for the development of many new products. Sikaflex®-2c NS EZ Mix+ is a two-component sealant that offers a true +/-50% movement capability and is easier than ever to mix and tool. Sikaflex®-2c NS Arctic is the first sealant designed to perform in temperatures as low as 15°F. Sikaflex®-444 Rapid is a groundbreaking one-component polyurethane sealant that is traffic-ready in just 4 hours. Additionally,

Sika's proprietary hybrid pre-polymers serve as the foundation for a wide range of advanced hybrid sealants, including Sikaflex® HY 150, Sikaflex® HY 100, and Sikaflex® HY 35. Sika remains committed to developing innovative product solutions that help owners, specifiers, and contractors complete projects efficiently year-round.



Green Concrete 24h
Wet Concrete 1h

Another breakthrough innovation in many of our polyurethane products, is the ability to apply sealants to green concrete 24 hours after pouring the wet mix and damp concrete just 60 minutes after a rainfall - helping owners and contractors meet critical project deadlines!



PRODUCT APPLICATIONS

- | | | | | | |
|-----------------------|---------------------|-----------------------------|-------------------------|-----------------------------------|--|
| 1. Brick Joints | 6. EIFS Joints | 11. Store Front Window/Door | 16. Roof Top Joints | 21. Paver Joints | 26. Interior Warehouse Control Joints |
| 2. Metal Panel Joints | 7. Window Perimeter | 12. Highway Joints/Roadway | 17. Tarmac Joints | 22. Fully Immersed Joints | 27. Security Sealant for Institutions |
| 3. Natural Stone | 8. Wet Glazing | 13. Side Walk Joints | 18. Glass Facade Joints | 23. Butt Joint Glazing | 28. Roofing, Clay Roof, Metal Flashing |
| 4. Stucco | 9. Park Deck Joint | 14. Granite Facade Joints | 19. Tilt Wall Joints | 24. Cast-in-Place Concrete Joints | |
| 5. Curtain Wall | 10. Pre-Cast Joints | 15. Coping | 20. Bridge Joints | 25. Runway Joints | |

PRODUCT	APPLICATION
Sikaflex®-1a/ Sikaflex® NP 1	1 7 10 11 14 15 16 21 22 24
Sikaflex®-15 LM	1 3 4 6 7 10 11 12 15 14 19 24
Sikaflex® 1c SL Sikaflex® SL1	13 17 21
Sikaflex® TX1	1 4 7 10 11 24
Sikaflex®-11 FC	1 7 9 10 11 15 22
Sikaflex®-CR195	27
Sikaflex®-2c Ns EZ Mix+/ Sikaflex® NP2	1 3 4 7 9 10 11 12 13 14 15 16 19 21 22 24
Sikaflex®-2c SL/ Sikaflex® SL2	9 12 13 21 22 25
Sikaflex®-2c NS Arctic	1 3 7 9 10 11 14 15 16 24 11 19 24
Sikaflex®HY 35	1 7 10 11 14 15 16 21 22 24
Sikaflex® HY 100	1 3 7 10 11 19 24
Sikaflex® HY 150	1 3 4 6 7 10 11 19 24
Sikasil® WS-290/ 290 FPS	1 2 3 4 5 6 7 10 11 14 18 23 24
Sikasil® WS-295/ Sikasil® 295 FPS	1 2 3 4 5 6 7 8 10 11 14 15 16 18 23 24
Sikasil® WS-305	5 7 8 11 23
Sikasil® N-Plus	1 7 10 11 15 16 21 23 24
Sikasil®-728 SL	9 12 20 25
Sikasil®-728 NS	9 12 20 25
Sikasil®-728 RCS	12 20 25
Sikaflex®-NP125	28
Sikasil®-451	22
Sika® Loadflex-524 EZ	26
Sikadur®-58 CJR	26
Sika® Duoflex NS	1 10 22
Sika® Duoflex SL	22

ONE-COMPONENT POLYURETHANE

Sika's one-component polyurethane sealants are the foundation to our sealant product line. Sikaflex® 1a / Sikaflex® NP1 have been on the market for over 50 years with a strong, proven performance for a variety of applications. Sika's polyurethane sealants are the go-to products for contractors, specifiers, and owners who want a trusted product solution with outstanding performance.

KEY PRODUCTS:

Sikaflex®-1a/ Sikaflex® NP1

General purpose, Class 35 sealant for expansion joints, window perimeters, transitions, gaps, and cracks.

Sikaflex®-15 LM

Low-modulus, Class 100/50 sealant for high-movement joints.

Sikaflex®-1c SL/Sikaflex® SL1

Self-leveling, Class 25 sealant for horizontal pavement joints and cracks.

Sikaflex® TX1

General purpose, textured, Class 25 sealant for joints, perimeters, cracks, and gaps.

Sikaflex®-11 FC

General purpose, fast curing sealant / adhesive for bonding and filling cracks and gaps. Class 12.5.



TWO-COMPONENT POLYURETHANE

Sika's two-component polyurethane sealants are a staple of the parking garage and tilt-wall markets. With the ability to cure in cold temperatures and cure faster than standard one-component sealant, the Sikaflex® two-components offer a premier choice for contractors and specifiers.

KEY PRODUCTS:

Sikaflex®-2c NS EZ Mix+

Non-sag, true Class 50 sealant. Can be applied to green and wet concrete.

Sikaflex® NP2

Non-sag, class 25, highly flexible, non-priming, high-performance polyurethane sealant.

Sikaflex®-2c SL

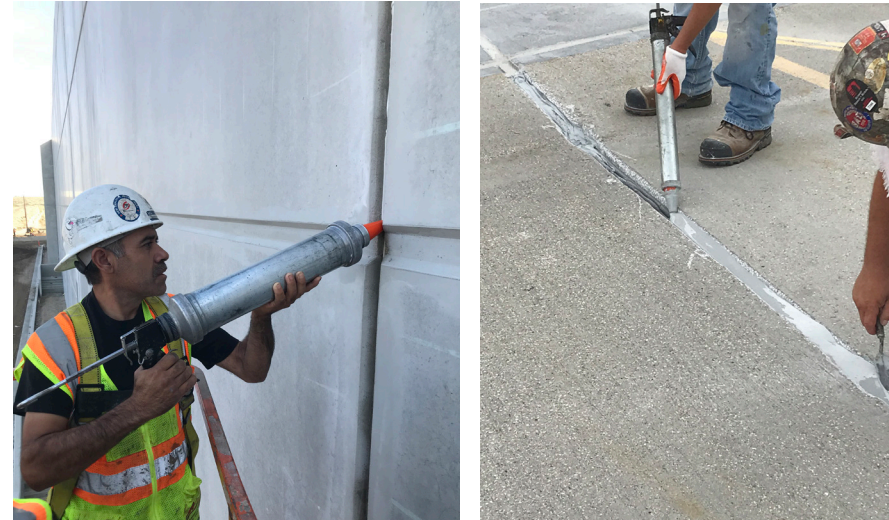
Self-leveling, Class 25 with capability of 50% movement when applied with hourglass shape and 2:1 width to depth ratio.

Sikaflex® SL2

Self-leveling, elastomeric polyurethane sealant. When cured, it forms a tough, resilient joint seal that resists penetration and abrasion and remains flexible.

Sikaflex®-2c NS Arctic

Non-sag, Class 25, for use in freezing conditions. It can be mixed, gunned, tooled and cured at temperatures down to 15°F.



	ASTM C920	Movement Capability	Consistency	Horizontal (H) Vertical (V)	Immersion Service	Potable Water NSF/ANSI 61 NSF 600	Fire Rated	Green/Damp Concrete	High Heel Traffic	Paintable	Custom Colors	Available Packaging
Sikaflex®-1a	■	+/-35%	Non-Sag	H,V	■ ¹	■	■	■	■	■	■	
Sikaflex® NP1	■	+/- 35%	Non-Sag	H,V	■ ¹		■ (2 hrs)	■	■	■	■	
Sikaflex®-15 LM	■	+100/-50%	Non-Sag	V			■ (3 hrs)			■	■	
Sikaflex®-1c SL	■	+/-25%	Self-Leveling	H				■	■			
Sikaflex® SL1	■	+/-25%	Self-Leveling	H								
Sikaflex® TX1	■	+/-25%	Non-Sag	H,V					■			
Sikaflex®-11 FC	■	+/-12.5%	Non-Sag	H,V	■ ¹	■						

-Cartridge -Sausage -Pail -Drum 1- Primer required

	ASTM C920	Movement Capability	Consistency	Horizontal (H) Vertical (V)	Immersion Service	Potable Water NSF/ANSI 61 NSF 600	Fire Rated	High Heel Traffic	Color Paks (available)	Available Packaging
Sikaflex®-2c NS EZ Mix+	■	+/-50%	Non-Sag	H,V	■ ¹	■	■ (2 hrs)	■ ²	■ ³	1.5 Gal 3.0 Gal
Sikaflex® NP2	■	+/- 25%	Non-Sag	H,V	■ ¹	■	■ (2 hrs)		■ ³	1.5 Gal 3.0 Gal
Sikaflex®-2c SL	■	+/-50%	Self-Leveling	H	■ ¹			■	■ ³	1.5 Gal 3.0 Gal
Sikaflex® SL2	■	+/- 25%	Self-Leveling	H					■ ³	1.5 Gal 3.0 Gal
Sikaflex®-2c NS Arctic	■	+/-25%	Non-Sag	H,V	■ ¹				■ ³	1.5 Gal

-Pail 1-Primer required 2-EZ Mix+ TG Additive 3-Custom color matching available

BUILDING SILICONE

The Sikasil® line of products represents the highest level of silicone sealant performance. The Sikasil® technology is built around achieving primerless adhesion to concrete along with outstanding adhesion to common non-porous surfaces. Sika's non-staining, high performance line of silicone sealants are used in applications from low-rise buildings to high-rise facade joints!

KEY PRODUCTS:

Sikasil® WS-295

Low modulus, Class 50, non-staining, neutral cure silicone building sealant.

Sikasil® WS-290

Ultra-low modulus, Class 100/50, non-staining, neutral cure silicone building sealant.

Sikasil® WS-305

Low modulus, Class 50, optimized, neutral cure silicone building sealant.

Sikasil®-N Plus

Class 25, mildew-resistant, neutral cure.

Sikasil®-GP

General purpose, mildew-resistant, acetoxy silicone sealant.



	ASTM C920	Movement Capability	Consistency	Horizontal (H) Vertical (V)	Non-Staining	Wet Glazing	Universal Color Paks (51 Colors)	Batch Produced Custom Colors	Available Packaging
Sikasil® WS-295	■	+/-50%	Non-Sag	V	■	■	■	■	
Sikasil® WS-295 FPS	■	+/-50%	Non-Sag	V	■	■	■	■	
Sikasil® WS-290	■	+100/-50%	Non-Sag	V	■		■	■	
Sikasil® WS-290 FPS	■	+100/-50%	Non-Sag	V	■		■	■	
Sikasil® WS-305	■	+/-50%	Non-Sag	V		■		■	
Sikasil®-N Plus	■	+/-25%	Non-Sag	V				■	
Sikasil®-GP			Non-Sag	V				■	

-Cartridge -Sausage -Pail -Drum 1- Custom color available

HIGHWAY & BRIDGE SILICONE

Sika also offers a range of silicone sealants for DOT applications which allow for performance in a variety of project types. Bridge joints that require fast turn around generally use Sikasil®-728 RCS, a rapid curing two-component silicone. While standard highway pavement applications typically require the self-leveling Sikasil®-728 SL for easy application and high production for miles of highway!



KEY PRODUCTS:

Sikasil®-728 SL

Self-leveling, Class 100/50, neutral cure silicone sealant.

Sikasil®-728 NS

Non-sag, Class 100/50, neutral cure silicone sealant.

Sikasil®-728 RCS

Self-leveling, Class 100/50, rapid curing sealant.

	ASTM C920	ASTM D5893	Movement Capability	Consistency	Horizontal (H) Vertical (V)	Rapid Cure	Colors	Available Packaging
Sikasil®-728 SL	■	■	+100/-50%	Self-Leveling	H		Limestone Charcoal	
Sikasil®-728 NS	■	■	+100/-50%	Non-Sag	V,H		Limestone Charcoal	
Sikasil®-728 RCS	■	■	+100/-50%	Self-Leveling	H	■	Limestone	

-Cartridge -Sausage -Pail -Drum

HYBRID

Sika's proprietary silyl-terminated hybrid sealants are unmatched in performance and quality. By creating our own pre-polymers, Sika has the advantage in performance capabilities that cannot be obtained by using off the shelf chemistry!

KEY PRODUCTS:

Sikaflex® HY 150
High performance, Class 100/50, ultra low-modulus, non-sag, and fast-curing hybrid sealant. High movement, ideal for stucco and EIFS.

Sikaflex® HY 100
High performance, Class 50, low-modulus, non-sag hybrid sealant. The workhorse of Sika's Silyl-Terminated sealant line with proven long-term performance when a lower modulus sealant is needed.

Sikaflex® HY 35
Fast skinning and very durable, Class 35, medium-modulus, non-sag hybrid sealant. Excellent for window perimeters and when a firmer sealant is desirable.

SikaHyflex®-407 EverFlash Universal
Non-sag, Class 12.5, silyl-terminated hybrid sealant with special adhesion to low-surface tension materials and compatibility with most peel and stick flashing.



	ASTM C920	Movement Capability	Consistency	Horizontal (H) Vertical (V)	Paintable (wet-on-wet)	TintBase (available)	EIFS suitable (ASTM C1382)	Available Packaging
Sikaflex® HY 150	■	+100%/-50%	Non-Sag	V	■	■ ²	■	
Sikaflex® HY 100	■	+/-50%	Non-Sag	V	■	■ ²	■	
Sikaflex® HY 35	■	+/-35%	Non-Sag	V	■			
SikaHyflex®-407 EverFlash Universal	■	+/-12.5%	Non-Sag	V				

-Cartridge -Sausage -Pail 1- Primer required 2- Custom Color Pack (available)

SPECIALTY

Sika's wide selection of specialty sealants include application areas such as control joints in vast warehouses or distribution center flooring which require the use of a polyurea fast cure control joint resin or epoxy control joint resin. Chemical facilities also need joint sealants for secondary containment areas which use polysulfide sealants for chemical resistance. Educational and penitentiary facilities are some other examples of environments that need specialty joint fillers that are hard enough to be pick proof. These specialty group of sealants are available to support a variety of application areas to meet most any project need!



KEY PRODUCTS:

Sika® Loadflex-524 EZ
Rapid curing, self-leveling, polyurea control joint resin. Can be shaved in under 5 minutes.

Sikadur®-58 CJR
Self-leveling, epoxy control joint resin.

Sika® Duoflex NS
Non-sag, chemical resistant polysulfide sealant.

Sika® Duoflex SL
Self-leveling, chemical resistant polysulfide sealant.

Sikadur®-31 Hi-Mod Gel
Non-sag, epoxy pick-proof joint resin.

Sikaflex® NP125
Class 12.5, Roofing adhesive, single-component, synthetic rubber based adhesive with fast tack-free time with tenacious bond to common roofing materials (including roof tiles, metal flashing, shingles, etc).

Sikaflex® CR195
Class 25 polyurethane, pick resistant excellent for security applications that require elasticity, abrasion and puncture resistance.

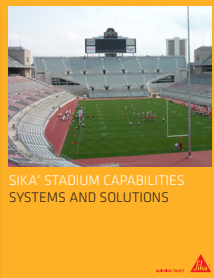
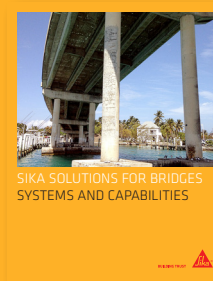
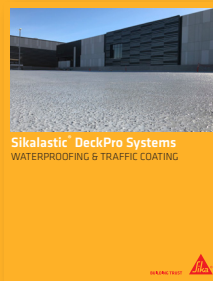
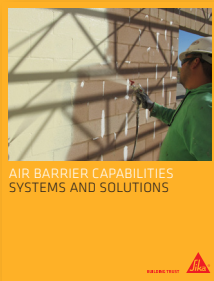
	ASTM C920	Movement Capability	Consistency	Horizontal (H) Vertical (V)	Chemical Resistant	Immersion Service	Control Joint	Pick Proof	Roof Applications	Available Packaging
Sika® Loadflex-524 EZ		-	Self-Leveling	H			■			
Sikadur®-58 CJR		-	Self-Leveling	H			■			
Sika® Duoflex NS	■	+/-25%	Non-Sag	V,H	■	■ ¹				
Sika® Duoflex SL	■	+/-25%	Self-Leveling	H	■	■ ¹				
Sikadur®-31 Hi-Mod Gel		-	Non-Sag	V			■			
Sikaflex® NP125	■	+/-12.5%	Non-Sag	H,V					■	
Sikaflex® CR195	■	+/-25%	Non-Sag	H,V				■		

- Cartridge -Sausage - Pail 1- Primer required

WE ARE SIKA

Sika is a specialty chemicals company with a leading position in the development and production of systems and products for bonding, sealing, damping, reinforcing and protecting in the building sector and the motor vehicle industry. Sika's product lines feature concrete admixtures, mortars, sealants and adhesives, structural strengthening systems, industrial flooring as well as roofing and waterproofing systems.

RELATED BROCHURES



Our most current General Sales Conditions shall apply. Please consult the Product Data Sheets prior to any use and processing.

©Sika Corporation / 09.2934.5 /09/2024

SIKA CORPORATION
201 Polito Avenue
Lyndhurst, NJ 07071
USA

CONTACT
Phone 201-933-8800
Fax 201-933-6225
usa.sika.com

