

SYSTEM DATA SHEET

PAREX® Armourwall WaterMaster DM CI Stucco

A continuously insulated portland cement plaster stucco system with enhanced water management featuring a Parex air/water-resistive barrier and a SikaWall Drainage Mat

PRODUCT DESCRIPTION

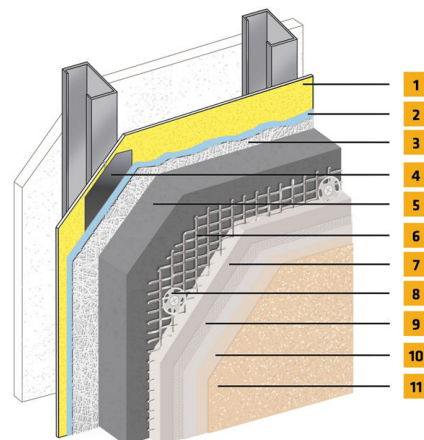
PAREX® Armourwall WaterMaster DM CI Stucco incorporates continuous insulation (CI), helping designers meet today's code requirements and provides a durable exterior stucco façade with unique, refined aesthetic appeal. These 3/4" thick assemblies can be installed at greater thicknesses in accordance with ASTM C926 as required for fire resistance rated assemblies or STC ratings. Enhanced Krak-Shield crack-resistance is available for all configurations by incorporating a reinforced leveling coat prior to application of the finish. As a WaterMaster system it incorporates a liquid-applied air & water-resistive barrier membrane, used for both joint treatment and field surface area application, that significantly reduces air leakage, maximizes energy efficiency and eliminates the potential of rips and tears in the membrane during construction.

USES

For exterior walls in new and retrofit commercial, institutional and residential construction when a continuous high effective R-value is needed to meet energy or eco-efficiency standards, and/or when a rainscreen is desired or required to satisfy code issues related to drainage.

CHARACTERISTICS / ADVANTAGES

- For use on non-combustible construction types
- For use in fire resistance rated walls
- Air/Water Resistant Barrier
- Code Compliant Drainage Mat



1. Acceptable Substrate*
2. Parex WeatherSeal
3. SikaWall Drainage Mat
4. SikaWall Joint Treatment
5. Approved Rigid Insulation Board*
6. SikaWall Permalath 1000 or Metal Plaster Base*
7. SikaWall Stucco Base
8. Mechanical Fastener*
9. SikaWall Reinforcing Mesh embedded in Parex Base Coat (Optional)
10. SikaWall Stucco Prime (Optional)
11. Parex Finish

*By Others

System Data Sheet

PAREX® Armourwall WaterMaster DM CI Stucco

September 2025, Version 02.01

021830950000242583

SYSTEM INFORMATION

Compatibility

Material substitution will adversely affect system performance and will void all warranty coverage unless approved in writing by Sika Facades Technical Service.

System Performance

TEST	METHOD	RESULTS
Accelerated weathering	ASTM G153	No deleterious effects after 2000 hours viewed under 5x magnification.
Water Resistance	ASTM D2247	No deleterious effects at 14 day exposure.
Intermediate Scale Multi-story Fire Test	UBC Standard 26-9/NFPA 285	Met test criteria
Radiant heat exposure	NFPA 268	Met test criteria
Surface burning	ASTM E 84	System Components Flame spread <25; Smoke developed <450
Methods for fire tests of building construction and materials	ASTM E119	1 hour rating
Behavior of materials in a vertical tube furnace at 750° C	ASTM E136	SikaWall Stucco Base with SikaWall Permalath 1000 specimens met the weight loss criteria for passing the test.
Drainage efficiency	ASTM E2273	Exceeds 90% minimum
Salt spray resistance	ASTM B117	No deleterious effects at 300 hours exposure period.
Freeze-thaw resistance	AC11	No deleterious effects after 10 cycles viewed under 5x magnification.

TECHNICAL INFORMATION

Test Results

- **Users must read the most current Product Data Sheets for each system component before using any products and follow all application instructions and cautions.**
- Maximum allowable deflection L/360, based on structural properties only.
- The design wind load shall not exceed the system's allowable wind load as stated in applicable code reports.
- Details shall conform with Sika Facades recommendations and shall be consistent with the project requirements.
- Control joints and trim accessories required. Control joint placement is required in the PAREX® Armourwall WaterMaster DM CI wall system every 144 ft² per ASTM C1063.
- Consult the framing and sheathing manufacturer for design and application considerations.
- Expansion joints are required in the system where they exist in the substrate, where the system adjoins dissimilar construction, at changes in substrates and at floor lines in multilevel wood frame construction.
- System shall terminate at expansion joints.
- Sealant joints shall be detailed and installed per sealant manufacturer's

recommendations.

- A minimum 6:12 slope is required on all horizontal surfaces greater than 1".
- Backer rod, sealant and flashing are required at door and window openings.
- Contact Sika Facades' Technical Service Department at 1-800-226-2424 for additional information.

APPLICATION INFORMATION

Substrates

Acceptable Substrates:

Glass mat Gypsum Sheathing
Gypsum sheathing
Exposure 1 OSB
Cement board sheathing
Concrete & concrete masonry
Exposure 1 exterior plywood
Huber Zip Sheathing (Sheathing Only)

BASIS OF PRODUCT DATA

Results may differ based upon statistical variations depending upon mixing methods and equipment, temperature, application methods, test methods, actual site conditions and curing conditions.

ENVIRONMENTAL, HEALTH AND SAFETY

For further information and advice regarding transportation, handling, storage and disposal of chemical products, user should refer to the actual Safety Data Sheets containing physical, environmental, toxicological and other safety related data. User must read the current actual Safety Data Sheets before using any products. In case of an emergency, call CHEMTREC at 1-800-424-9300, International 703-527-3887.

LEGAL DISCLAIMER

- KEEP CONTAINER TIGHTLY CLOSED
- KEEP OUT OF REACH OF CHILDREN
- NOT FOR INTERNAL CONSUMPTION
- FOR INDUSTRIAL USE ONLY
- FOR PROFESSIONAL USE ONLY

Prior to each use of any product of Sika Corporation, its subsidiaries or affiliates ("SIKA"), the user must always read and follow the warnings and instructions on the product's most current product label, Product Data Sheet and Safety Data Sheet which are available at usa.sika.com or by calling Sika's Technical Service Department at 1-800-933-7452. Nothing contained in any Sika literature or materials relieves the user of the obligation to read and follow the warnings and instructions for each Sika product as set forth in the current product label, Product Data Sheet and Safety Data Sheet prior to use of the Sika product.

usa.sika.com
Sika warrants this product for one year from date of installation to be free from manufacturing defects and

to meet the technical properties on the current Product Data Sheet if used as directed within the product's shelf life. User determines suitability of product for intended use and assumes all risks. User's and/or buyer's sole remedy shall be limited to the purchase price or replacement of this product exclusive of any labor costs.

NO OTHER WARRANTIES EXPRESS OR IMPLIED SHALL APPLY INCLUDING ANY WARRANTY OF MERCHANTABILITY OR FITNESS FOR A PARTICULAR PURPOSE. SIKA SHALL NOT BE LIABLE UNDER ANY LEGAL THEORY FOR SPECIAL OR CONSEQUENTIAL DAMAGES. SIKA SHALL NOT BE RESPONSIBLE FOR THE USE OF THIS PRODUCT IN A MANNER TO INFRINGE ON ANY PATENT OR ANY OTHER INTELLECTUAL PROPERTY RIGHTS HELD BY OTHERS.

Sale of Sika products are subject to the Terms and Conditions of Sale which are available at <https://usa.sika.com/en/about-us/terms-conditions-of-sale.html> or by calling 1-800-933-7452.

Users must read the most current Product Data Sheets for each system component before using any products and follow all application instructions and cautions. Sika warrants this product for one year from date of installation to be free from manufacturing defects and to meet the technical properties on the current Product Data Sheet if used as directed within the product's shelf life. User determines suitability of product for intended use and assumes all risks. User's and/or buyer's sole remedy shall be limited to the purchase price or replacement of this product exclusive of any labor costs. **NO OTHER WARRANTIES EXPRESS OR IMPLIED SHALL APPLY INCLUDING ANY WARRANTY OF MERCHANTABILITY OR FITNESS FOR A PARTICULAR PURPOSE. SIKA SHALL NOT BE LIABLE UNDER ANY LEGAL THEORY FOR SPECIAL OR CONSEQUENTIAL DAMAGES. SIKA SHALL NOT BE RESPONSIBLE FOR THE USE OF THIS PRODUCT IN A MANNER TO INFRINGE ON ANY PATENT OR ANY OTHER INTELLECTUAL PROPERTY RIGHTS HELD BY OTHERS.** Sale of Sika products are subject to the Terms and Conditions of Sale which are available at usa.sika.com.



System Data Sheet

PAREX® Armourwall WaterMaster DM CI Stucco
September 2025, Version 02.01
021830950000242583

PAREXArmourwallWaterMasterDMCIStucco-en-US-(09-2025)-2-1.pdf

