

## Finescreen 1000

Highly impact and puncture resistant, water-drainage wall system incorporating a cement board core, reinforced base coat and 100% acrylic polymer exterior finish.

### SYSTEM DESCRIPTION

LaHabra Finescreen 1000 is a high-impact, water-drainage wall cladding system that incorporates a water-resistive barrier and features a cement board (ASTM C1325) core installed with a polymer-modified base coat, fiberglass reinforcing mesh, and finishes. Finescreen 1000 provides extremely high impact and puncture resistance and increased dimensional stability without sacrificing design freedom.

### ACCEPTABLE SHEATHING

ASTM C1177 type sheathings, including, Weather Defense™ Platinum sheathing, GreenGlass® sheathing, eXP™ sheathing, GlasRoc® sheathing, Securock™ glass-mat sheathing and DensGlass® exterior sheathing, gypsum sheathing (ASTM C79/C1396); Exposure I or exterior plywood (Grade C/D or better); or Exposure I OSB.

### DESIGN CONSIDERATION

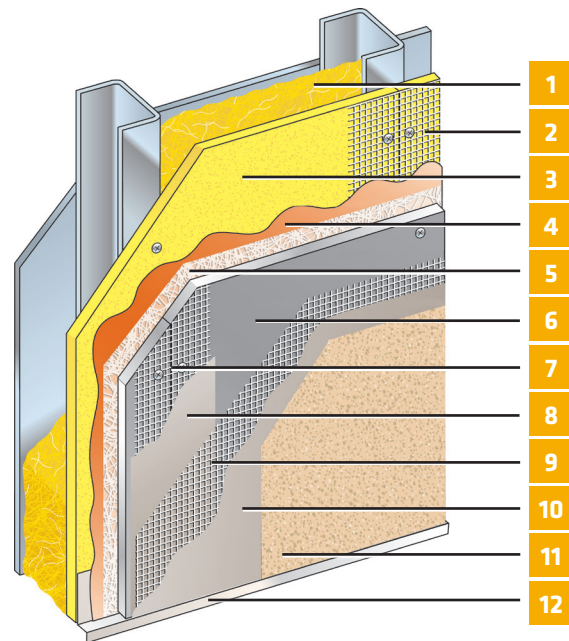
- Maximum substrate design deflection is L/360. Substrate must be level within 1/4" in 10' (6 mm in 3 m)
- Locate control joints approximately every 600 ft<sup>2</sup> (56 m<sup>2</sup>) of wall surface area with maximum uncontrolled length or width of 24 lin. ft. (7 m) and a maximum uncontrolled length-to-width ratio of 2 1/2:1
- Cement board must satisfy ASTM C1325 Type A Exterior, minimum 1/2"
- Expansion joints are required in the system where they exist in the substrate, where the system adjoins dissimilar construction, at changes in substrates, at floor lines in multilevel wood frame construction, and where movement is anticipated
- Use only for above grade vertical walls.

### USES

For exterior walls in new or retrofit commercial, institutional and residential construction such as hotels, hospitals, retail, schools, multi-family apartments and condominiums, and government facilities.

### MATERIAL SUBSTITUTION

Material substitution will adversely affect system performance and will void all warranty coverage unless approved in writing by Sika Facades.



1. Cavity Insulation\*
2. Approved Joint Reinforcement: SikaWall MaxFlash or SikaWall Sheathing Fabric embedded in Finestop RA/RS/VB
3. Acceptable Sheathing\*
4. Finestop RA/RS/VB
5. SikaWall Drainage Mat
6. Cement Board\*
7. Sheathing Joint Reinforcement
8. LaHabra Base Coat
9. LaHabra or SikaWall Reinforcing Mesh
10. LaHabra Base Coat
11. LaHabra Finish
12. Flashing or Starter Track\*  
(\*By Others)

# Finescreen 1000

CODE COMPLIANCE			
TEST	METHOD	CRITERIA	RESULTS
Direct-Applied Exterior Finish Systems (DEFS)	ICC-ES AC59		Meets all performance requirements
Transverse Wind-load	ASTM E330	Steel stud framing (16 gauge, 3 <sup>5</sup> / <sub>8</sub> " ) @ 16"o.c	Average ultimate loads <sup>1</sup> : - 2585 Pa (- 54 psf) + 1053 Pa (+ 22 psf) not taken to failure
Transverse Wind-load	ASTM E330	Steel stud framing (20 gauge, 3 <sup>5</sup> / <sub>8</sub> " ) @ 16"o.c.	Average ultimate loads <sup>1</sup> : - 1676 Pa (- 35 psf) + 862 Pa (+ 18 psf) not taken to failure
Transverse Wind-load	ASTM E330	Wood assembly (2" x 4") @ 16"o.c.	Average ultimate loads <sup>1</sup> : - 2681 Pa (- 56 psf) + 1197 Pa (+ 25 psf) not taken to failure
Bond Strength after Accelerated Weathering and Freeze-thaw Test	AC59	Minimum 34.3 kPa (5 psi)	Pass
Racking Test	ASTM E72	No failure of finish at substrate joints before failure of substrate OR no failure at 1" net deflection	Pass
Restrained Environmental Cycling Test	AC59	No cracking of finish or other distress after 5 cycles of water spray (24 hrs.) and radiant heat (72 hrs.)	Pass
Water Penetration	ASTM E 331	No water penetration after 15 minutes @ 137 Pa (2.86 psf)	Pass
Radiant Heat Exposure	NFPA 268	No ignition at 20 minutes	Met test criteria.
Fire Endurance	ASTM E119	Maintain fire resistance of existing rated assembly	2-hour rating
Intermediate Scale Multi-story Fire Test	NFPA 285 / UBC Standard 26-9	1. Resist flame propagation over the exterior surface 2. Resist vertical spread of flame within combustible core/ component of panel from one story to the next 3. Resist vertical spread of flame over the interior surface from one story to the next 4. Resist lateral spread of flame from the compartment of fire origin to adjacent spaces	Met test criteria
Surface Burning	ASTM E84 / UL 723	Flame spread < 25 Smoke developed < 450	All components of the system meet Class A performance (FS < 25; SD < 450)
Abrasion Resistance	ASTM D968	No Cracking or loss of film integrity at 528 qt. (500L) of sand	Finish Coat not worn through after 686 liters of falling sand
Accelerated Weathering	ASTM G 153 (formerly G23)	No deleterious effects after 2000 hours.	Pass
Freeze-Thaw	AC59	No deleterious effects after 10 cycles	Pass 60 cycles
Mildew Resistance	Mil Std 810B Method 508	No fungus growth after 28 days	Pass
Salt Fog Resistance	ASTM B117	No deleterious effects after 300 hours	Pass
Water Resistance	ASTM D 2247	No deleterious effects after 14 days exposure	Pass

# Finescreen 1000

## WARRANTY STATEMENT

Prior to each use of any product of Sika Corporation, its subsidiaries or affiliates ("SIKA"), the user must always read and follow the warnings and instructions on the product's most current product label, Product Data Sheet and Safety Data Sheet which are available at [usa.sika.com/lahabra](http://usa.sika.com/lahabra) or by calling SIKAFACEDS' Technical Service Department at 1-800-589-1336. Nothing contained in any SIKAFACEDS literature or materials relieves the user of the obligation to read and follow the warnings and instructions for each SIKAFACEDS product as set forth in the current product label, Product Data Sheet and Safety Data Sheet prior to use of the SIKAFACEDS product.

SIKAFACEDS warrants this product for one year from date of installation to be free from manufacturing defects and to meet the technical properties on the current Product Data Sheet if used as directed within the product's shelf life. User determines suitability of product for intended use and assumes all risks. User's and/or buyer's sole remedy shall be limited to the purchase price or replacement of this product exclusive of any labor costs. NO OTHER WARRANTIES EXPRESS OR IMPLIED SHALL APPLY INCLUDING ANY WARRANTY OF MERCHANTABILITY OR FITNESS FOR A PARTICULAR PURPOSE. SIKAFACEDS SHALL NOT BE LIABLE UNDER ANY LEGAL THEORY FOR SPECIAL OR CONSEQUENTIAL DAMAGES. SIKAFACEDS SHALL NOT BE RESPONSIBLE FOR THE USE OF THIS PRODUCT IN A MANNER TO INFRINGE ON ANY PATENT OR ANY OTHER INTELLECTUAL PROPERTY RIGHTS HELD BY OTHERS. Sale of SIKAFACEDS products are subject to the Terms and Conditions of Sale which are available at [usa.sika.com](http://usa.sika.com).