

# Pebbletex CI-DCA with SikaWall-1000 MaxGrip Veneer Adhesive

An exterior cladding system with a continuous Finestop air/water-resistive barrier and continues insulation, featuring SikaWall-1000 MaxGrip Veneer Adhesive, a high-strength, specially formulated setting bed mortar used to adhere natural and manufactured stone, tile, and thin brick veneer.

## SYSTEM DESCRIPTION

Pebbletex CI-DCA with SikaWall MaxGrip Veneer Adhesive is a continuously insulated drainage wall cladding system. It features a Finestop fluid-applied air/water-resistive barrier, moisture drainage, continuous exterior insulation up to R15 (4" Type I EPS), and SikaWall MaxGrip Veneer Adhesive used to adhere natural and manufactured stone, tile, and thin brick veneer.

## USES

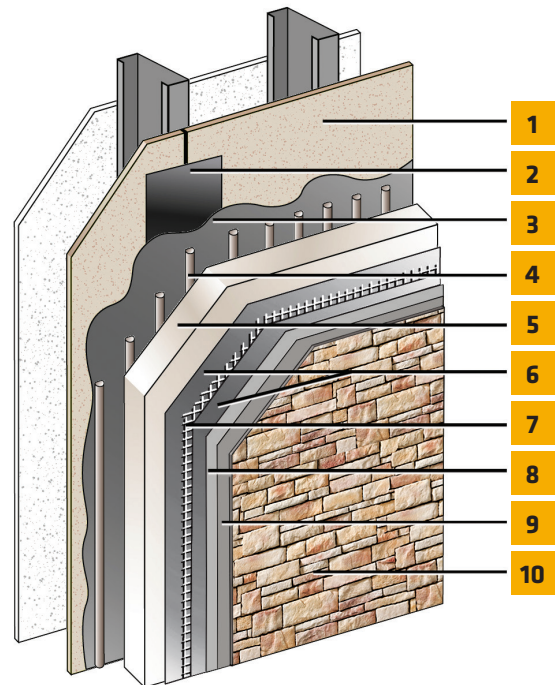
Pebbletex CI-DCA with SikaWall MaxGrip Veneer Adhesive may be used in fire-resistance-rated construction and in any construction type (IBC Types I through V), when installed in accordance with Sika Facades System instructions.

## ACCEPTABLE SUBSTRATES

Poured concrete/unit masonry; ASTM C1177 type sheathings, including DensGlass® exterior sheathing, DensElement (sheathing only), eXP® sheathing, GlasRoc® sheathing, Securock® glass-mat sheathing, Weather Defense™ Platinum sheathing, GreenGlass® sheathing; cement-boards (ASTM C1325 Type A Exterior) including PermaBase™ cement-board; untreated Exposure I or exterior plywood sheathing (grade C-D or better); untreated Exposure I OSB, Huber Zip (sheathing only); Fire Treated wood sheathing: Pyro-Guard® and Dricon® plywood and FlameBlock® OSB; gypsum sheathing (ASTM C79/ASTM C1396).

## CODE COMPLIANCE

Document	Code Description
ICC-ESR 2186	Complies with IBC and IRC
ASTM E2568 / AC 235	Complies with requirements
ASTM E119	Does not detract from fire rating of base wall
NFPA 285 and 268	Meets requirements for use on fire-resistance-rated construction and in any construction type, including IBC Types I through V
ICC-ESR 2986 (Finestop RA/RS)	Air/water-resistive barrier*
Air Barrier Association of America recognized	Can be used on projects where ABAA recognized air barriers are specified



1. Acceptable Substrate\*
2. SikaWall Joint Treatment: Sheathing Fabric, MaxFlash or Flash Seal NP
3. Finestop RA/RS/VB
4. LaHabra Adhesive/Base Coat
5. Approved EPS Insulation Board\*
6. LaHabra Base Coat
7. SikaWall Intermediate 12 Reinforcing Mesh
8. Skim Coat of SikaWall MaxGrip Veneer Adhesive
9. SikaWall MaxGrip Veneer Adhesive
10. Adhered Veneer\*

\*By Others

For testing results, please reference Pebbletex CI-DCA with SikaWall MaxGrip Veneer Adhesive specification  
 \*Finestop RA/RS/VB can be used behind all claddings where more than one wall system is specified, creating one continuous AWRB system. This is appropriate whenever LaHabra Pebbletex CI-DCA with SikaWall MaxGrip Veneer Adhesive is used with other cladding types on a multi-clad building.

# Pebbletex CI-DCA with SikaWall-1000 MaxGrip Veneer Adhesive

## MATERIAL SUBSTITUTION

Material substitution will adversely affect system performance and will void all warranty coverage unless approved in writing by Sika Facades Technical Service Team.

## DESIGN CONSIDERATIONS

- Use only for above grade vertical walls. Not for use below grade or on surfaces subject to continuous or intermittent immersion in water or hydrostatic pressure. System must terminate a minimum of 6" (152 mm) above grade.
- The International Building Code and TMS 402/602 Building Code Requirements and Specifications for Masonry Structures do not place a specific height limit on this application. However local building code may impose certain restrictions that would limit the height that the system can be placed. Consult the authority having jurisdiction (AHJ) for the project to ensure local requirements are satisfied.
- Substrate deflection should be limited based on recommendations of the veneer manufacturer or local building codes but in no case shall deflection be more than L/360 under positive and negative design wind loads.
- Typical locations for system expansion joints are at building expansion joints, at prefabricated panel joints, floor lines of wood frame construction or where slip tracks are used in steel frame construction, where substrates change and where structural movement is anticipated. It is the sole responsibility of the project design team, including the architect, engineer, etc., to ultimately determine specific expansion joint placement, width and design. Detail specific locations in construction drawings.
- Per code veneer unit shall not exceed 2 5/8" (66.7 mm) in specified thickness, 36" (914 mm) in longest dimension not more than 5 ft<sup>2</sup> (0.46 m<sup>2</sup>) in total face area and shall not weigh more than 15 lbs/ft<sup>2</sup> (718 Pa).
- All substrates must be clean, dry and sound without planar irregularities greater than 1/4" per 10' (6 mm per 3 m).

## WARRANTY

Prior to each use of any product of Sika Corporation, its subsidiaries or affiliates ("SIKA"), the user must always read and follow the warnings and instructions on the product's most current product label, Product Data Sheet and Safety Data Sheet which are available at [usa.sika.com/lahabra](http://usa.sika.com/lahabra) or by calling SIKAFacades' Technical Service Department at 1-800-589-1336. Nothing contained in any SIKAliterature or materials relieves the user of the obligation to read and follow the warnings and instructions for each SIKAPRODUCT as set forth in the current product label, Product Data Sheet and Safety Data Sheet prior to use of the SIKAPRODUCT.

SIKA warrants this product for one year from date of installation to be free from manufacturing defects and to meet the technical properties on the current Product Data Sheet if used as directed within the product's shelf life. User determines suitability of product for intended use and assumes all risks. User's and/or buyer's sole remedy shall be limited to the purchase price or replacement of this product exclusive of any labor costs. NO OTHER WARRANTIES EXPRESS OR IMPLIED SHALL APPLY INCLUDING ANY WARRANTY OF MERCHANTABILITY OR FITNESS FOR A PARTICULAR PURPOSE. SIKASHALL NOT BE LIABLE UNDER ANY LEGAL THEORY FOR SPECIAL OR CONSEQUENTIAL DAMAGES. SIKASHALL NOT BE RESPONSIBLE FOR THE USE OF THIS PRODUCT IN A MANNER TO INFRINGE ON ANY PATENT OR ANY OTHER INTELLECTUAL PROPERTY RIGHTS HELD BY OTHERS. Sale of SIKAPRODUCTS are subject to the Terms and Conditions of Sale which are available at [usa.sika.com](http://usa.sika.com).

### Sika Corporation

201 Polito Avenue  
Lyndhurst, NJ 07071 USA  
Customer Service +1 (800) 433-9517  
Technical Service +1 (800) 589-1336  
[usa.sika.com/lahabra](http://usa.sika.com/lahabra)

Rev December 2024

**BUILDING TRUST**

