

Senergy[®]



Platinum CI Stucco Plus

Continuously Insulated Cement Plaster Stucco System
Featuring Senershield-R/-RS/-VB Air/Water-Resistive Barrier
Typical Details

BUILDING TRUST



Platinum CI Stucco Plus

Typical Details

Table of Contents

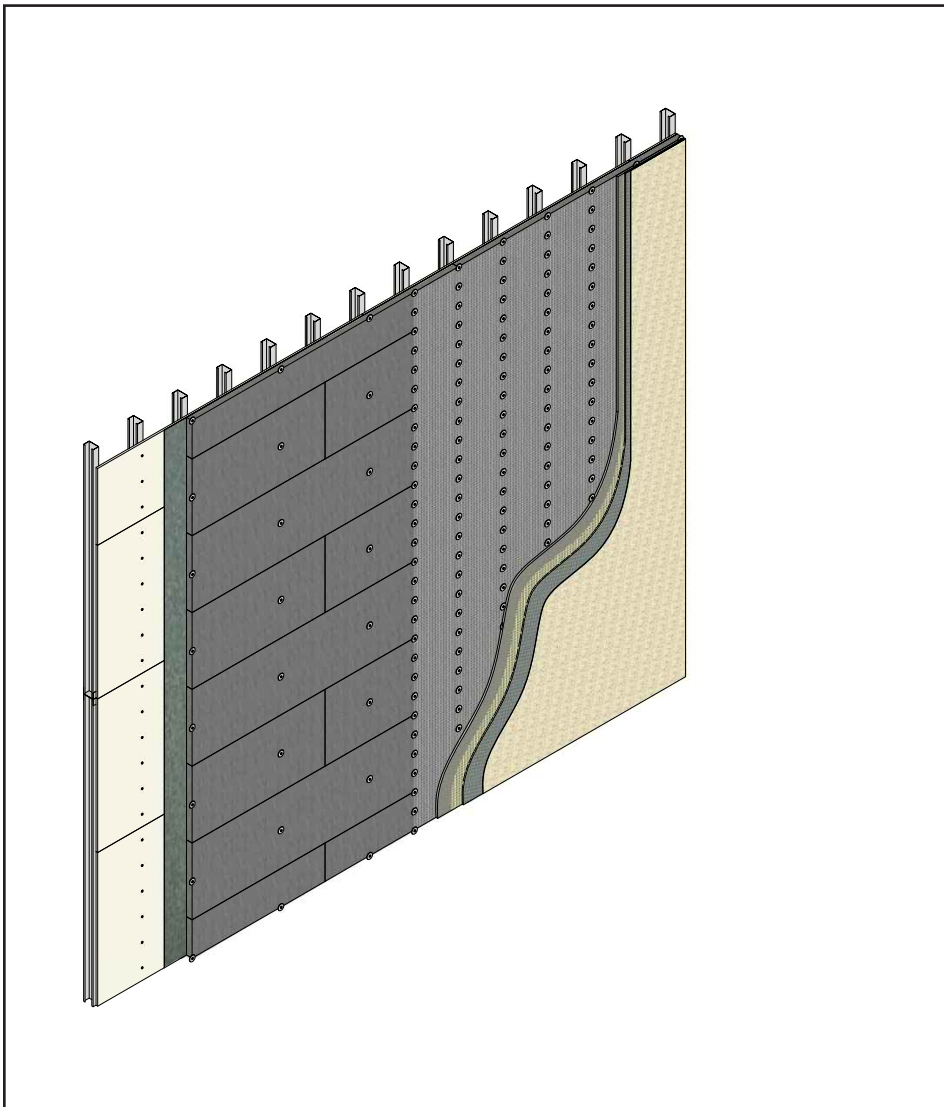
- | | |
|--|--|
| 1. Fastening Pattern | 16. Flanged Window Head |
| 2. Framed / Sheathed Construction | 17. Window Jamb (Flush) |
| 3. Masonry / Concrete Construction | 18. Window Jamb (Recessed) |
| 4. Termination at Foundation – Flush with Casing / Stop Bead | 19. Flanged Window Jamb |
| 5. Termination at Foundation with Casing / Stop Bead | 20. Window Sill (Flush) |
| 6. Termination at Foundation with CI Weep Track | 21. Window Sill (Recessed) |
| 7. Change in Substrate | 22. Flanged Window Sill |
| 8. Trim Junction | 23. Pipe Penetration |
| 9. Surface Control Joint | 24. Dryer Vent |
| 10. Inside Corner Control Joint – Framed / Sheathed Construction | 25. Downspout |
| 11. EPS Shape Application | 26. Light Fixture |
| 12. Corner Bead | 27. Termination at Metal Coping / Roof Edge Flashing – Option 01 |
| 13. Decorative Shape | 28. Termination at Metal Coping / Roof Edge Flashing – Option 02 |
| 14. Window Head (Flush) | 29. Flashing / Termination at Roof |
| 15. Window Head (Recessed) | 30. Kick-Out Flashing |

Notes:

- **The details within are the latest recommendations and are represent in good faith by Sika Corporation US (hereinafter Sika). The details are subject to change without notice. Sika accepts no liability for the end use of the details. For conditions not shown, consult Sika for review of specific details.**
- **Install Sika materials in accordance with current installation instructions.**
- **Unsatisfactory conditions shall be reported to the General Contractor and corrected before the application of Sika products.**

Platinum CI Stucco Plus

TYPICAL FASTENING PATTERN



PCISP-01 2401

(*NOTE: BY OTHERS)

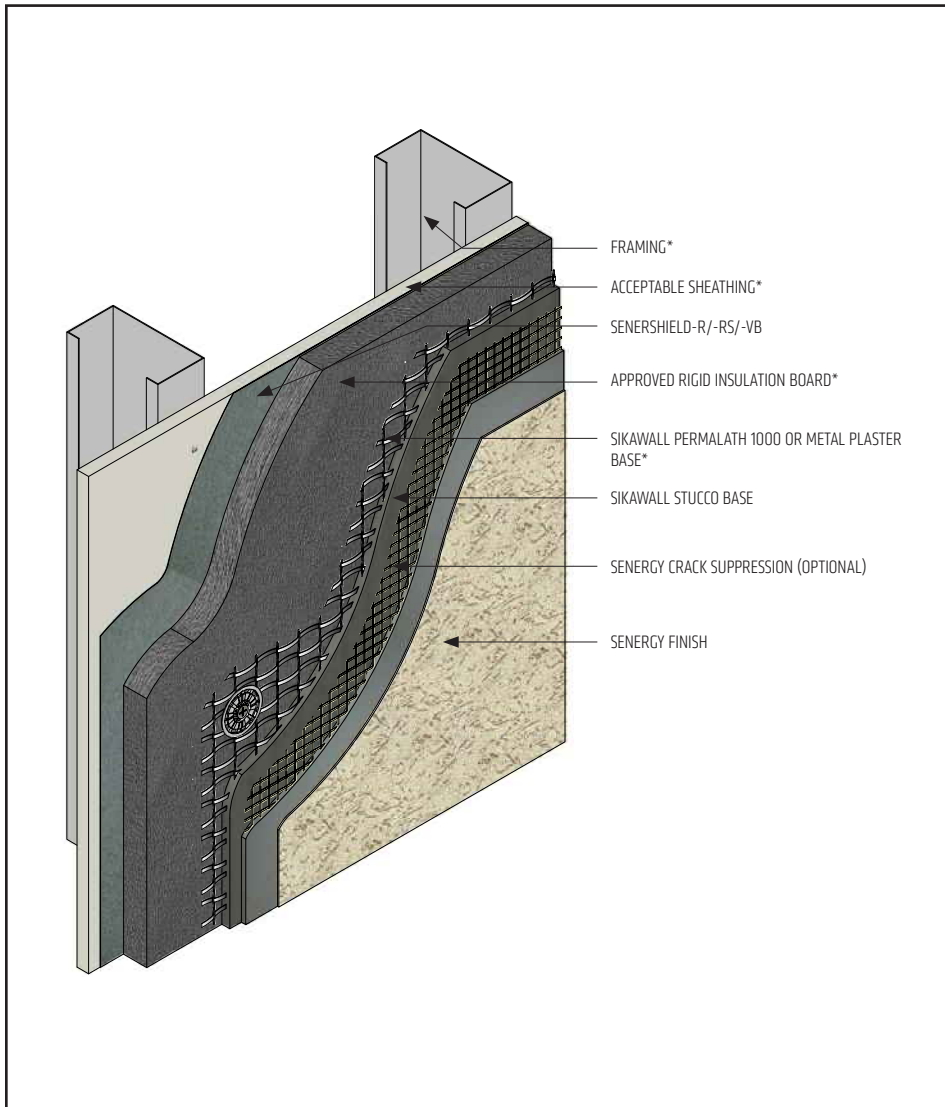
- Sheathing:
Fasten per sheathing manufacturer's recommendations or project design requirements.
- Approved Rigid Insulation Board:
Secure with 2 to 3 fasteners per board to hold in place until lath is installed.
- Lath – SikaWall PermaLath 1000: use appropriate fasteners spaced not more than 6" (152 mm) o.c. vertically, 16" (406 mm) o.c. horizontally; metal or wire lath: use appropriate fasteners spaced not more than 7" (178 mm) o.c. vertically, 16" (406 mm) or 24" (610 mm) o.c. horizontally, per requirements of ASTM C1063. Refer to Senergy Platinum CI Stucco Plus specifications.

The details within are the latest recommendations and are represented in good faith by Sika Corporation US (hereinafter Sika). The details are subject to change without notice. Sika accepts no liability for the end use of the details. For conditions not shown, consult Sika for review of specific details.

- Install Sika materials in accordance with current installation instructions.
- Unsatisfactory conditions shall be reported to the General Contractor and corrected before the application of Sika products.

Platinum CI Stucco Plus

TYPICAL FRAMED/SHEATHED CONSTRUCTION



PCISP-02 2401

(*NOTE: BY OTHERS)

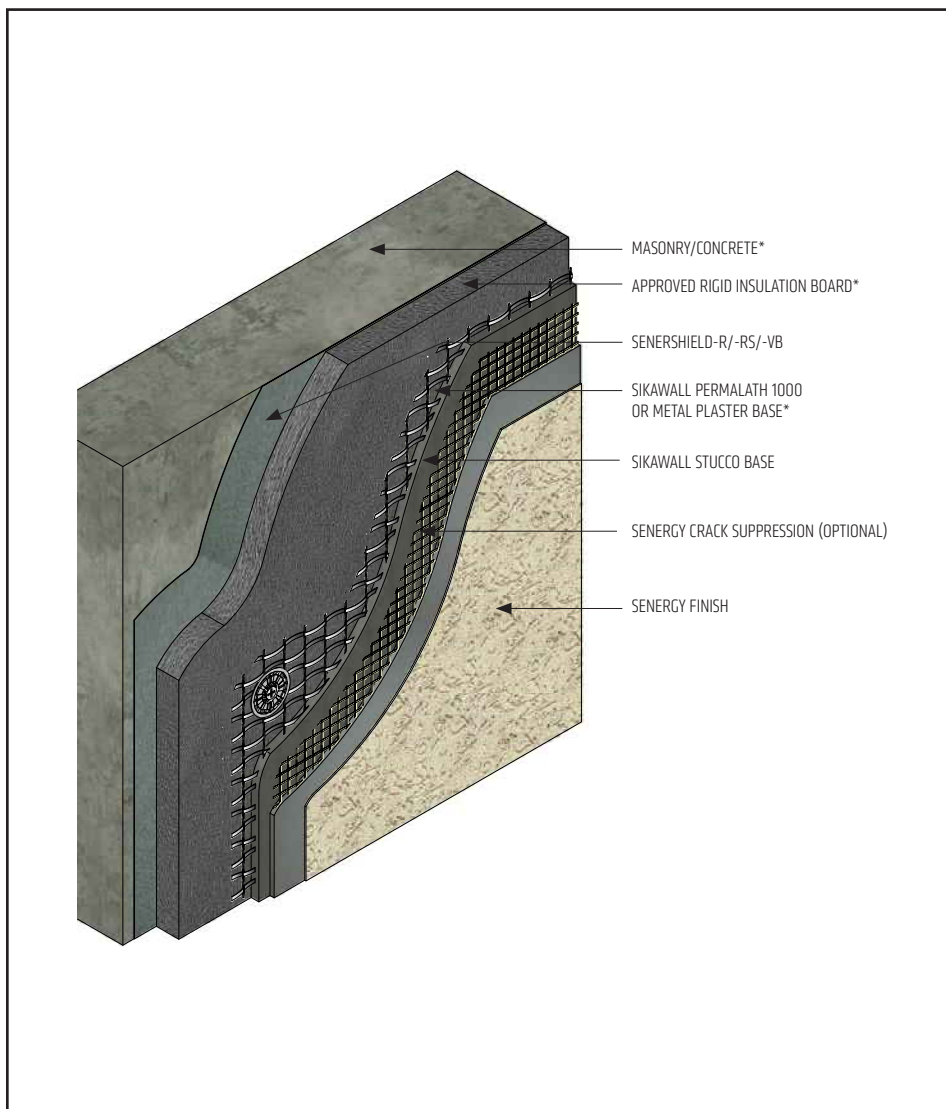
- Ensure Senershield-R/-RS/-VB is dry prior to Rigid Insulation Board installation.
- Basic requirements for Plaster Base:
 - SikaWall Stucco Base $\frac{3}{8}$ " to $\frac{1}{2}$ " thickness: Min. 1" 20 ga. wire, min. 2.5 lb/sq.yd. metal lath or acceptable alternative.
 - SikaWall Stucco Base equal to or greater than $\frac{1}{2}$ " thickness: SikaWall PermaLath 1000 or min. 1 $\frac{1}{2}$ " 17 ga. wire, min. 2.5 lb/sq. yd. metal lath or acceptable alternative.
- Senergy Crack Suppression: Flexguard 4 or SikaWall SRT Mesh embedded in Senergy Base Coat or SikaWall Stucco Surface Leveler

The details within are the latest recommendations and are represented in good faith by Sika Corporation US (hereinafter Sika). The details are subject to change without notice. Sika accepts no liability for the end use of the details. For conditions not shown, consult Sika for review of specific details.

- Install Sika materials in accordance with current installation instructions.
- Unsatisfactory conditions shall be reported to the General Contractor and corrected before the application of Sika products.

Platinum CI Stucco Plus

TYPICAL MASONRY/CONCRETE CONSTRUCTION



- Multiple coats of Senersshield-R/-RS/-VB may be required to achieve a pin-hole free application.
- Ensure Senersshield-R/-RS/-VB is dry prior to Rigid Insulation Board installation.
- Basic requirements for Plaster Base:
 - SikaWall Stucco Base $\frac{3}{8}$ " to $\frac{1}{2}$ " thickness: Min. 1" 20 ga. wire, min. 2.5 lb/sq.yd. metal lath or acceptable alternative.
 - SikaWall Stucco Base equal to or greater than $\frac{1}{2}$ " thickness: SikaWall PermaLath 1000 or min. $1\frac{1}{2}$ " 17 ga. wire, min. 2.5 lb/sq. yd. metal lath or acceptable alternative.
- Senergy Crack Suppression: Flexguard 4 or SikaWall SRT Mesh embedded in Senergy Base Coat or SikaWall Stucco Surface Leveler

PCISP-03 2401

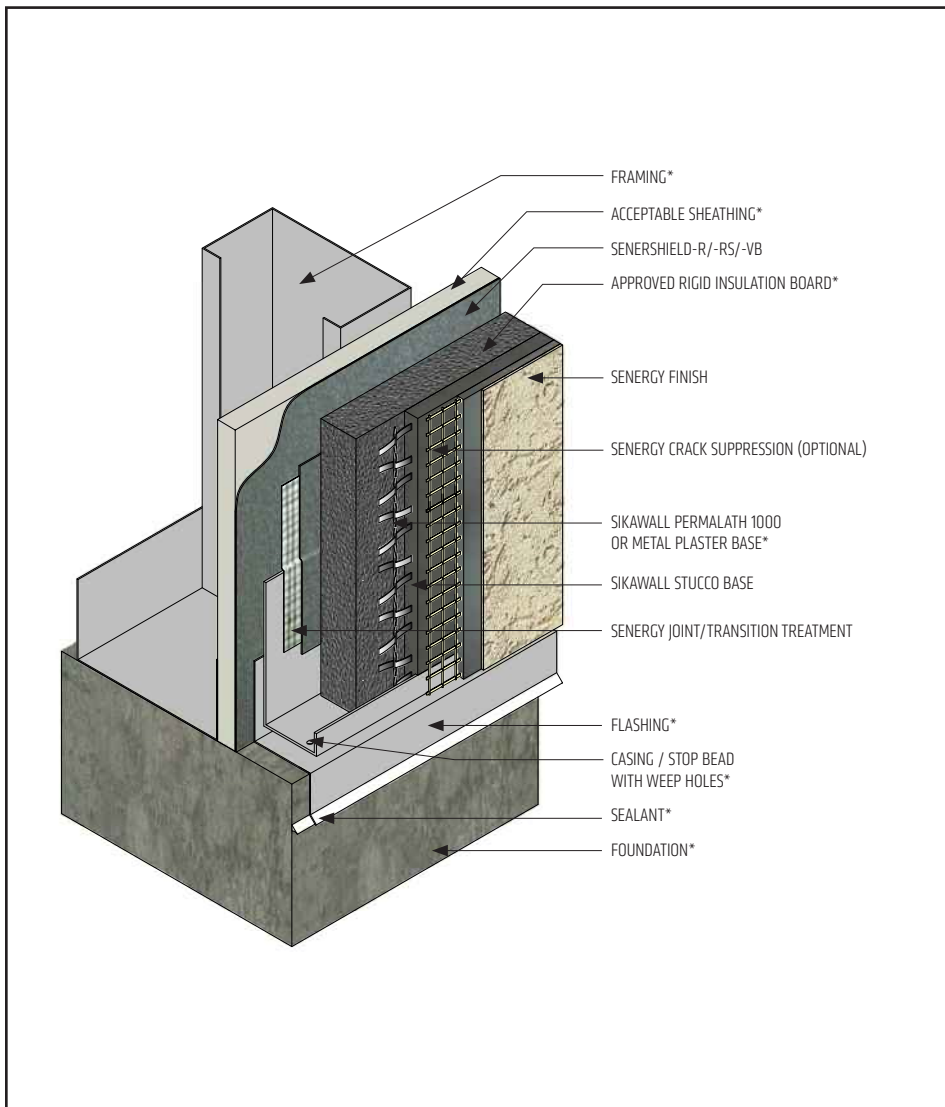
(*NOTE: BY OTHERS)

The details within are the latest recommendations and are represented in good faith by Sika Corporation US (hereinafter Sika). The details are subject to change without notice. Sika accepts no liability for the end use of the details. For conditions not shown, consult Sika for review of specific details.

- Install Sika materials in accordance with current installation instructions.
- Unsatisfactory conditions shall be reported to the General Contractor and corrected before the application of Sika products.

Platinum CI Stucco Plus

TYPICAL TERMINATION AT FOUNDATION – FLUSH WITH CASING / STOP BEAD



PCISP-04 2401

(*NOTE: BY OTHERS)

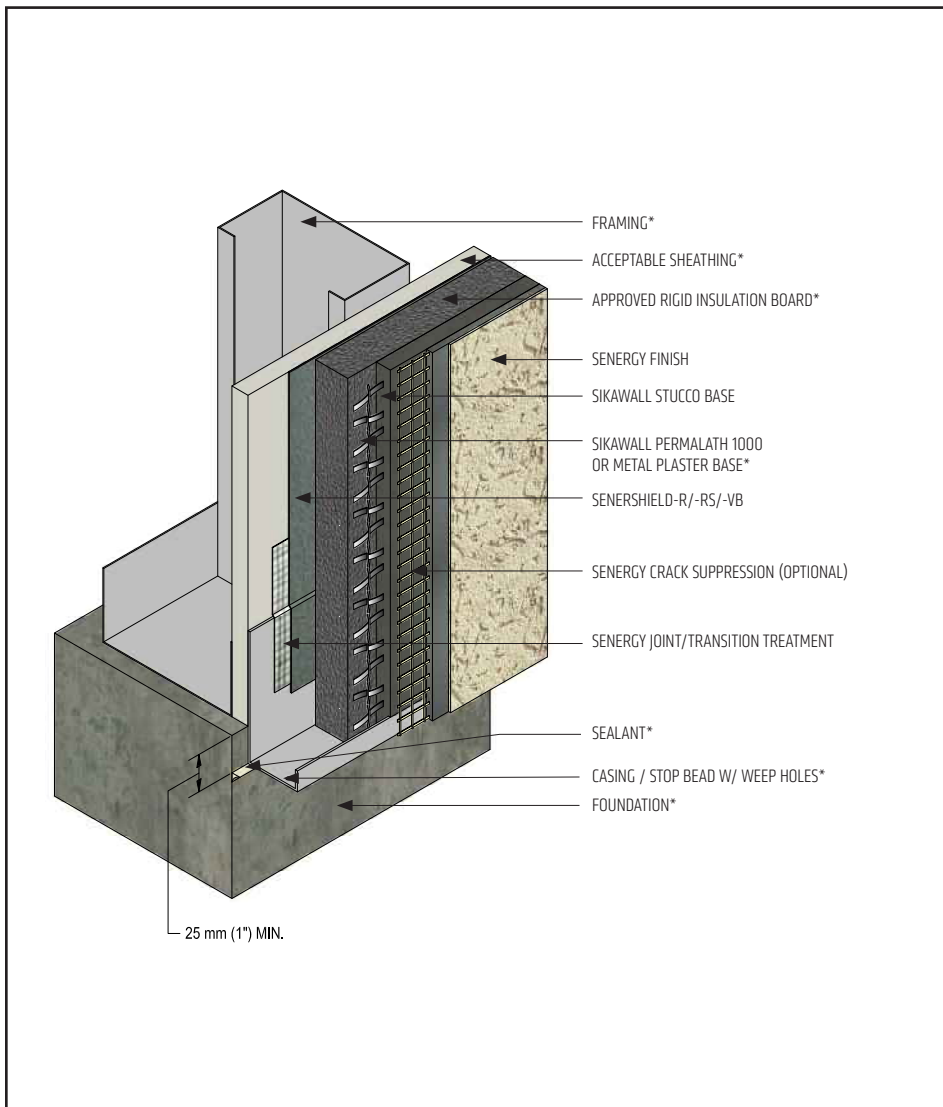
- Terminate the Platinum CI Stucco Plus system a minimum of 6" (152 mm) above raw earth and 2" (50 mm) above paved surface.
- Use Senergy Transition Treatment to lap on to the casing/stop bead flange.
- Ensure casing/stop bead includes weep holes to facilitate drainage.
- Senergy Joint/Transition Treatment Options: SikaWall MaxFlash, SikaWall Sheathing Fabric embedded in Senershield-R/-RS/-VB or SikaWall Flash Seal NP.
- Senergy Crack Suppression: Flexguard 4 or SikaWall SRT Mesh embedded in Senergy Base Coat or SikaWall Stucco Surface Leveler.
- Senergy Crack Suppression: Flexguard 4 or SikaWall SRT Mesh embedded in Senergy Base Coat or SikaWall Stucco Surface Leveler.

The details within are the latest recommendations and are represented in good faith by Sika Corporation US (hereinafter Sika). The details are subject to change without notice. Sika accepts no liability for the end use of the details. For conditions not shown, consult Sika for review of specific details.

- Install Sika materials in accordance with current installation instructions.
- Unsatisfactory conditions shall be reported to the General Contractor and corrected before the application of Sika products.

Platinum CI Stucco Plus

TYPICAL TERMINATION AT FOUNDATION WITH CASING / STOP BEAD



- Terminate the Platinum CI Stucco Plus system a minimum of 6" (152 mm) above raw earth and 2" (50 mm) above paved surface.
- Provide minimum 1" (25 mm) overlap at framing/foundation transition.
- Use Senergy Transition Treatment to lap on to the casing/stop bead flange.
- Ensure casing/stop bead includes weep holes to facilitate drainage.
- Senergy Joint/Transition Treatment Options: SikaWall MaxFlash, SikaWall Sheathing Fabric embedded in Senershield-R/-RS/-VB or SikaWall Flash Seal NP.
- Senergy Crack Suppression: Flexguard 4 or SikaWall SRT Mesh embedded in Senergy Base Coat or SikaWall Stucco Surface Leveler.

PCISP-05 2401

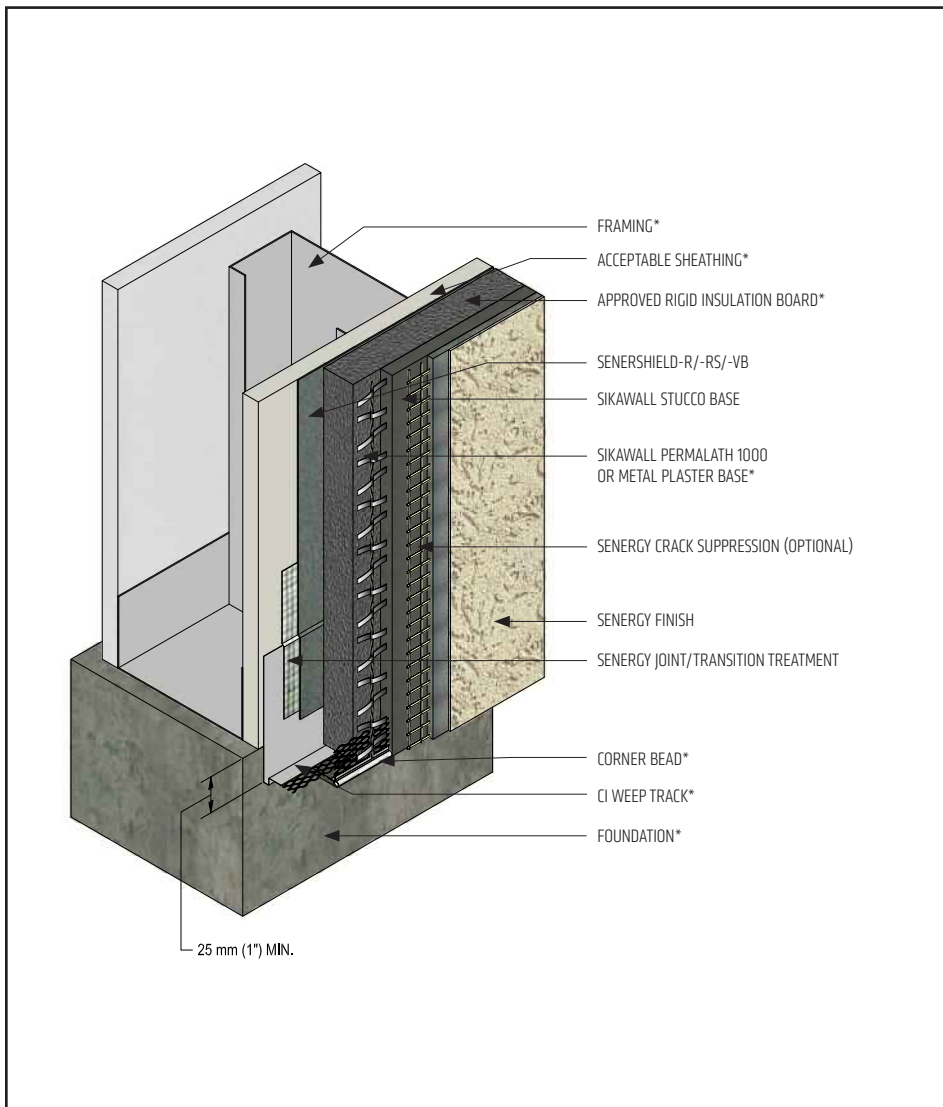
(*NOTE: BY OTHERS)

The details within are the latest recommendations and are represented in good faith by Sika Corporation US (hereinafter Sika). The details are subject to change without notice. Sika accepts no liability for the end use of the details. For conditions not shown, consult Sika for review of specific details.

- Install Sika materials in accordance with current installation instructions.
- Unsatisfactory conditions shall be reported to the General Contractor and corrected before the application of Sika products.

Platinum CI Stucco Plus

TYPICAL TERMINATION AT FOUNDATION WITH CI WEEP TRACK



- Terminate the Platinum CI Stucco Plus system a minimum of 6" (152 mm) above raw earth and 2" (50 mm) above paved surface.
- Provide minimum 1" (25 mm) overlap at framing/foundation transition.
- Use Senergy Transition Treatment to lap on to the CI Weep Track flange.
- Senergy Joint/Transition Treatment Options: SikaWall MaxFlash, SikaWall Sheathing Fabric embedded in Senershield-R/-RS/-VB or SikaWall Flash Seal NP.
- Senergy Crack Suppression: Flexguard 4 or SikaWall SRT Mesh embedded in Senergy Base Coat or SikaWall Stucco Surface Leveler.

PCISP-06 2401

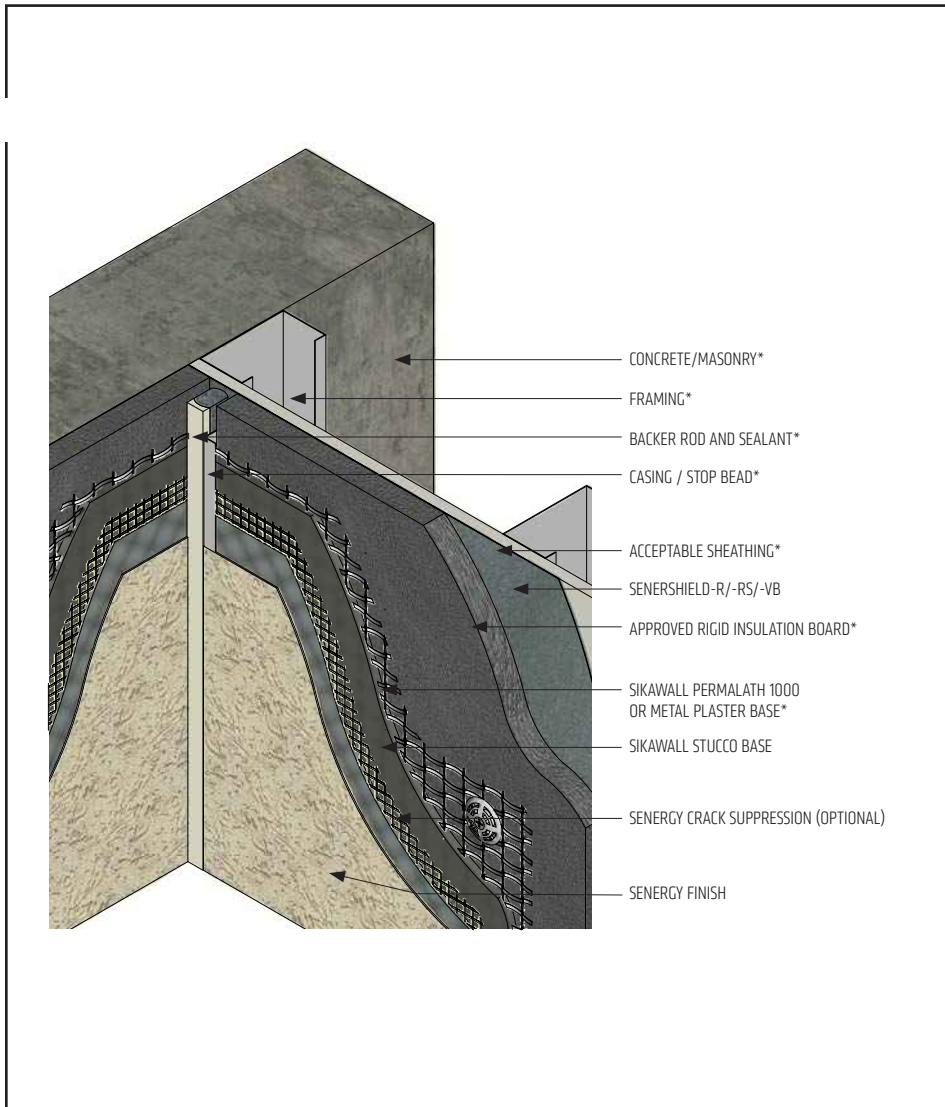
(*NOTE: BY OTHERS)

The details within are the latest recommendations and are represented in good faith by Sika Corporation US (hereinafter Sika). The details are subject to change without notice. Sika accepts no liability for the end use of the details. For conditions not shown, consult Sika for review of specific details.

- Install Sika materials in accordance with current installation instructions.
- Unsatisfactory conditions shall be reported to the General Contractor and corrected before the application of Sika products.

Platinum CI Stucco Plus

TYPICAL CHANGE IN SUBSTRATE



- Ensure Senersshield-R/-RS/-VB application is continuous behind the Platinum CI Stucco Plus system at change in substrate – apply SikaWall Flash Seal NP at change in substrate followed by fully coating with Senersshield-R/-RS/-VB.
- Do not apply finish into joint to receive sealant.
- Senergy Crack Suppression: Flexguard 4 or SikaWall SRT Mesh embedded in Senergy Base Coat or SikaWall Stucco Surface Leveler.
- Reference "Acceptable Sealants for use with Senergy Wall Systems" Technical Bulletin for a list of sealants.

PCISP-07 2401

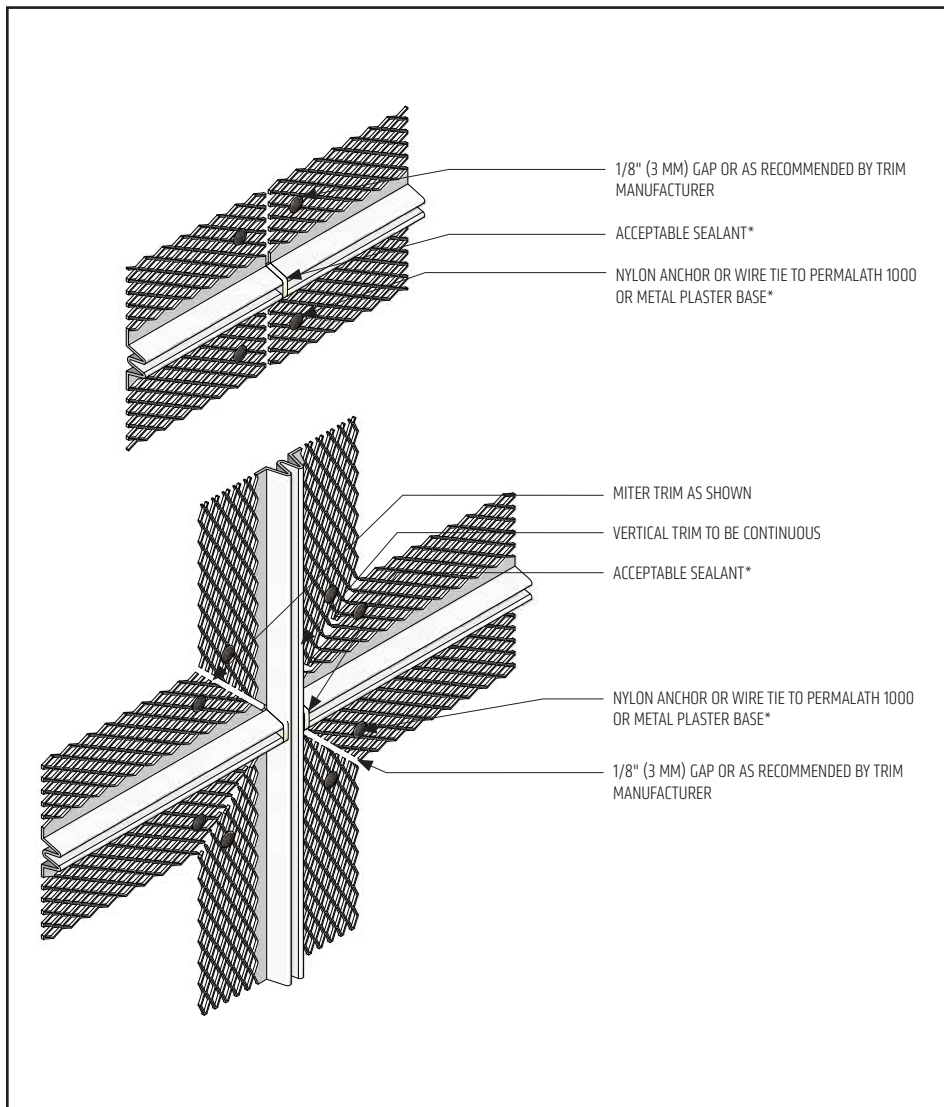
(*NOTE: BY OTHERS)

The details within are the latest recommendations and are represented in good faith by Sika Corporation US (hereinafter Sika). The details are subject to change without notice. Sika accepts no liability for the end use of the details. For conditions not shown, consult Sika for review of specific details.

- Install Sika materials in accordance with current installation instructions.
- Unsatisfactory conditions shall be reported to the General Contractor and corrected before the application of Sika products.

Platinum CI Stucco Plus

TYPICAL TRIM JUNCTION



- At trim intersection it is recommended that the vertical trim be continuous.

PCISP-08 2401

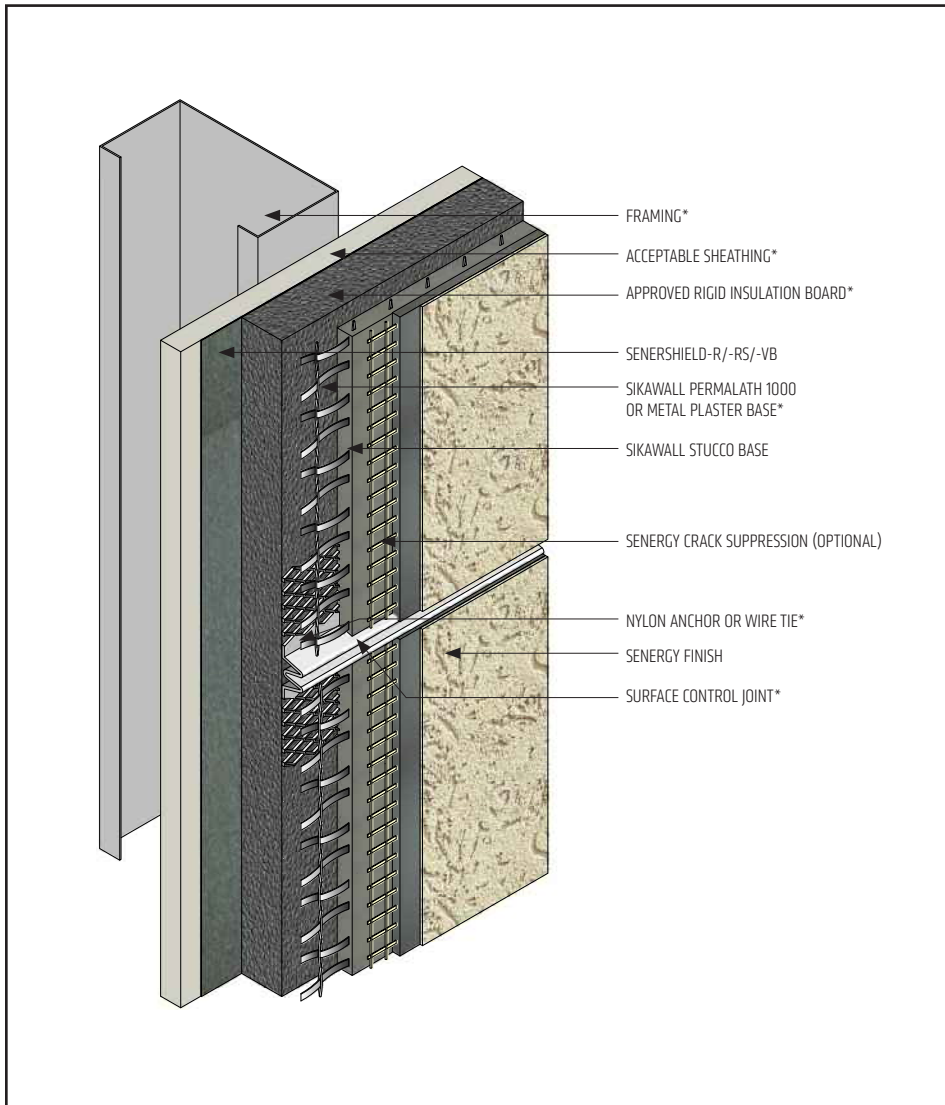
(*NOTE: BY OTHERS)

The details within are the latest recommendations and are represented in good faith by Sika Corporation US (hereinafter Sika). The details are subject to change without notice. Sika accepts no liability for the end use of the details. For conditions not shown, consult Sika for review of specific details.

- Install Sika materials in accordance with current installation instructions.
- Unsatisfactory conditions shall be reported to the General Contractor and corrected before the application of Sika products.

Platinum CI Stucco Plus

TYPICAL SURFACE CONTROL JOINT



- Provide control joints every 144 ft² (13 m²) and placement as determined by the Design Professional. Maximum recommended uncontrolled length or width is 18 ft (5.5 m) and a maximum uncontrolled length to width ratio of 2-1/2 to 1.
- Lath must be broken at the control joint accessory.
- Senergy Crack Suppression: Flexguard 4 or SikaWall SRT Mesh embedded in Senergy Base Coat or SikaWall Stucco Surface Leveler.

PCISP-09 2401

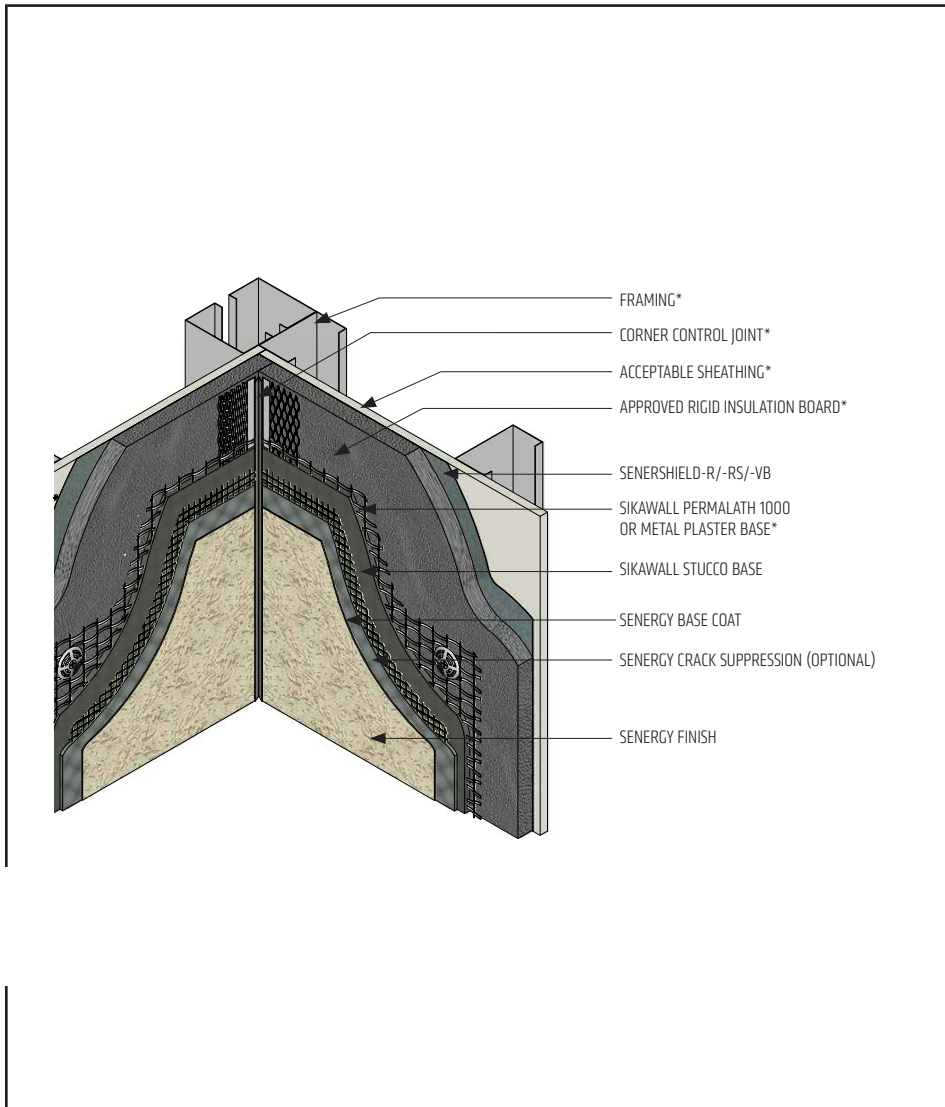
(*NOTE: BY OTHERS)

The details within are the latest recommendations and are represented in good faith by Sika Corporation US (hereinafter Sika). The details are subject to change without notice. Sika accepts no liability for the end use of the details. For conditions not shown, consult Sika for review of specific details.

- Install Sika materials in accordance with current installation instructions.
- Unsatisfactory conditions shall be reported to the General Contractor and corrected before the application of Sika products.

Platinum CI Stucco Plus

TYPICAL INSIDE CORNER CONTROL JOINT - FRAMED / SHEATHED CONSTRUCTION



- Ensure Senershield-R/-RS/-VB application is continuous behind the Platinum CI Stucco Plus system – apply Senergy Transition Treatment at inside corner.
- Senergy Crack Suppression: Flexguard 4 or SikaWall SRT Mesh embedded in Senergy Base Coat or SikaWall Stucco Surface Leveler.
- Senergy Joint/Transition Treatment Options: SikaWall MaxFlash, SikaWall Sheathing Fabric embedded in Senershield-R/-RS/-VB or SikaWall Flash Seal NP.

PCISP-10 2401

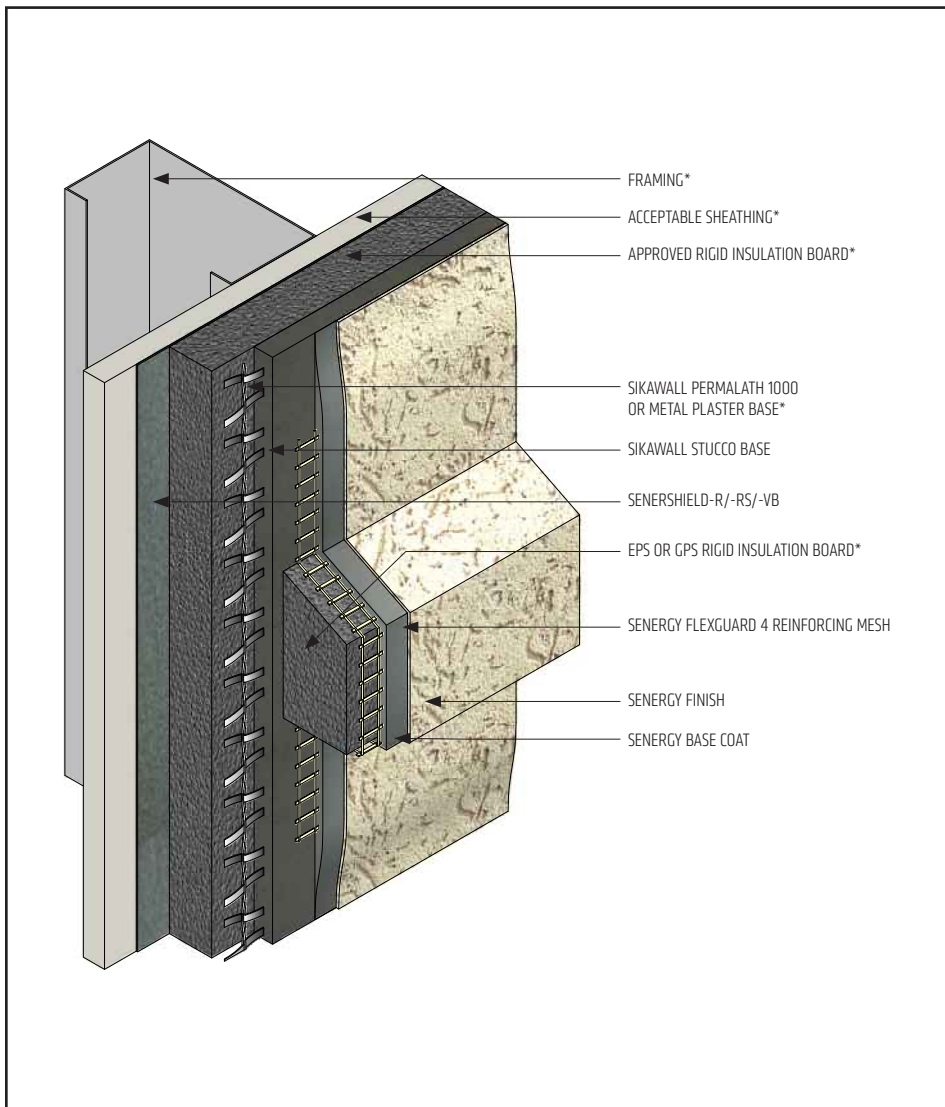
(*NOTE: BY OTHERS)

The details within are the latest recommendations and are represented in good faith by Sika Corporation US (hereinafter Sika). The details are subject to change without notice. Sika accepts no liability for the end use of the details. For conditions not shown, consult Sika for review of specific details.

- Install Sika materials in accordance with current installation instructions.
- Unsatisfactory conditions shall be reported to the General Contractor and corrected before the application of Sika products.

Platinum CI Stucco Plus

TYPICAL EPS OR GPS SHAPE APPLICATION



- Extend Senergy Flexguard 4 Reinforcing Mesh and Senergy Base Coat from band or shape onto SikaWall Stucco Base a minimum of 3" (76 mm).
- Provide a 6:12 slope on horizontal applications greater than 1".
- Adhere EPS or GPS Rigid Insulation band/ shape with Senergy Base Coat to SikaWall Stucco Base surface.

PCISP-11 2401

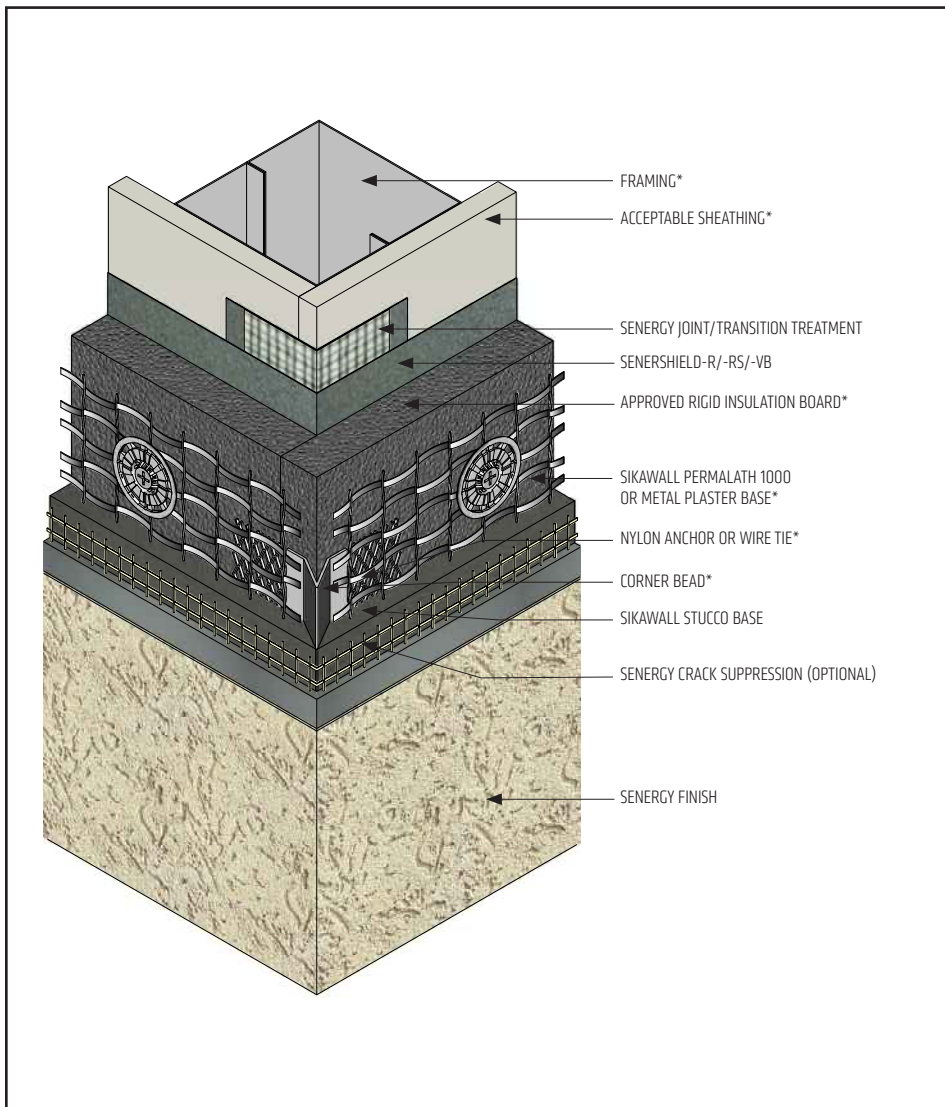
(*NOTE: BY OTHERS)

The details within are the latest recommendations and are represented in good faith by Sika Corporation US (hereinafter Sika). The details are subject to change without notice. Sika accepts no liability for the end use of the details. For conditions not shown, consult Sika for review of specific details.

- Install Sika materials in accordance with current installation instructions.
- Unsatisfactory conditions shall be reported to the General Contractor and corrected before the application of Sika products.

Platinum CI Stucco Plus

TYPICAL CORNER BEAD



- Attach corner bead with wire ties, anchors or fasteners to resist movement during application of SikaWall Stucco Base.
- Fill corner bead solid with SikaWall Stucco Base.
- Senergy Joint/Transition Treatment Options: SikaWall MaxFlash, SikaWall Sheathing Fabric embedded in Senersshield-R/-RS/-VB or SikaWall Flash Seal NP.
- Senergy Crack Suppression: Flexguard 4 or SikaWall SRT Mesh embedded in Senergy Base Coat or SikaWall Stucco Surface Leveler.

PCISP-12 2401

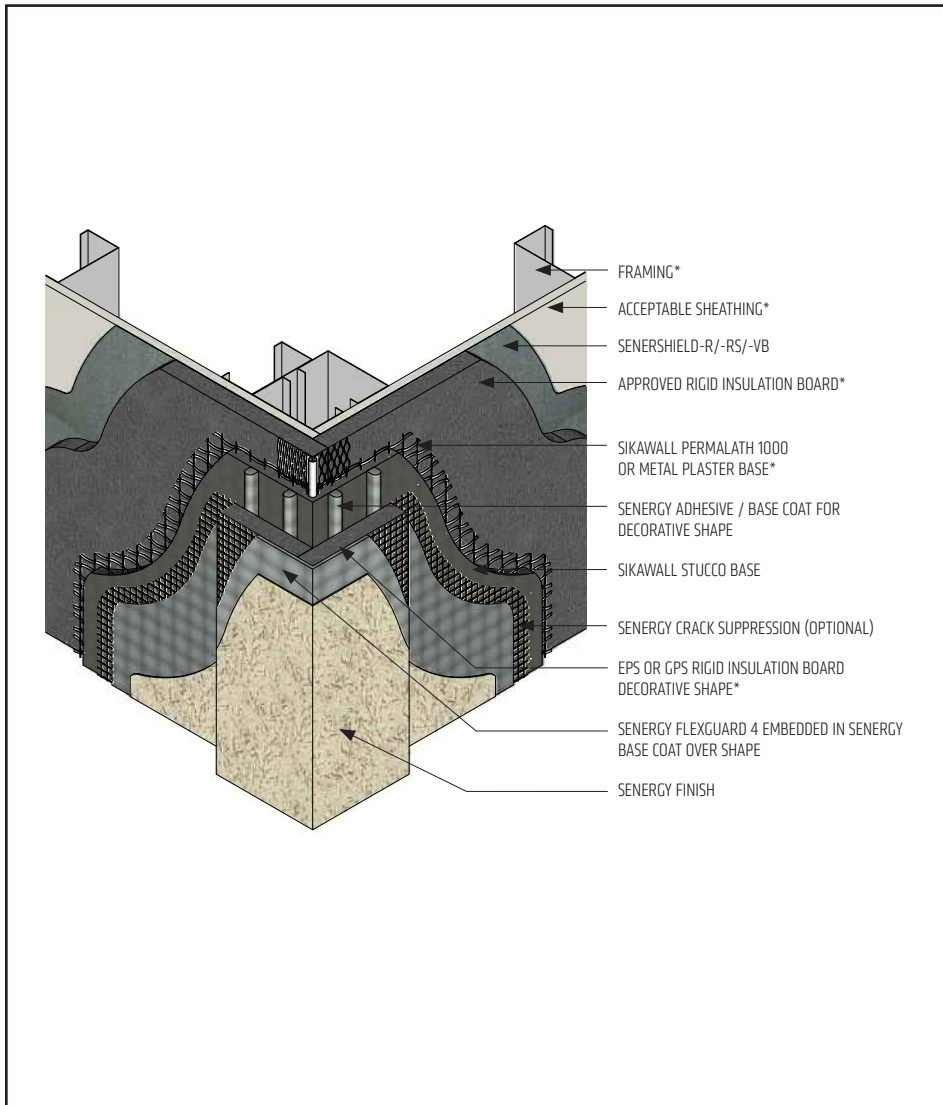
(*NOTE: BY OTHERS)

The details within are the latest recommendations and are represented in good faith by Sika Corporation US (hereinafter Sika). The details are subject to change without notice. Sika accepts no liability for the end use of the details. For conditions not shown, consult Sika for review of specific details.

- Install Sika materials in accordance with current installation instructions.
- Unsatisfactory conditions shall be reported to the General Contractor and corrected before the application of Sika products.

Platinum CI Stucco Plus

TYPICAL DECORATIVE SHAPE



- Extend Senergy Fleguard 4 Reinforcing Mesh and Senergy Base Coat from band or shape onto SikaWall Stucco Base a minimum of 3" (76 mm).
- Adhere EPS or GPS Rigid Insulation band/ shape with Senergy Base Coat to SikaWall Stucco Base surface.
- Senergy Crack Suppression: Flexguard 4 or SikaWall SRT Mesh embedded in Senergy Base Coat or SikaWall Stucco Surface Leveler.

PCISP-13 2401

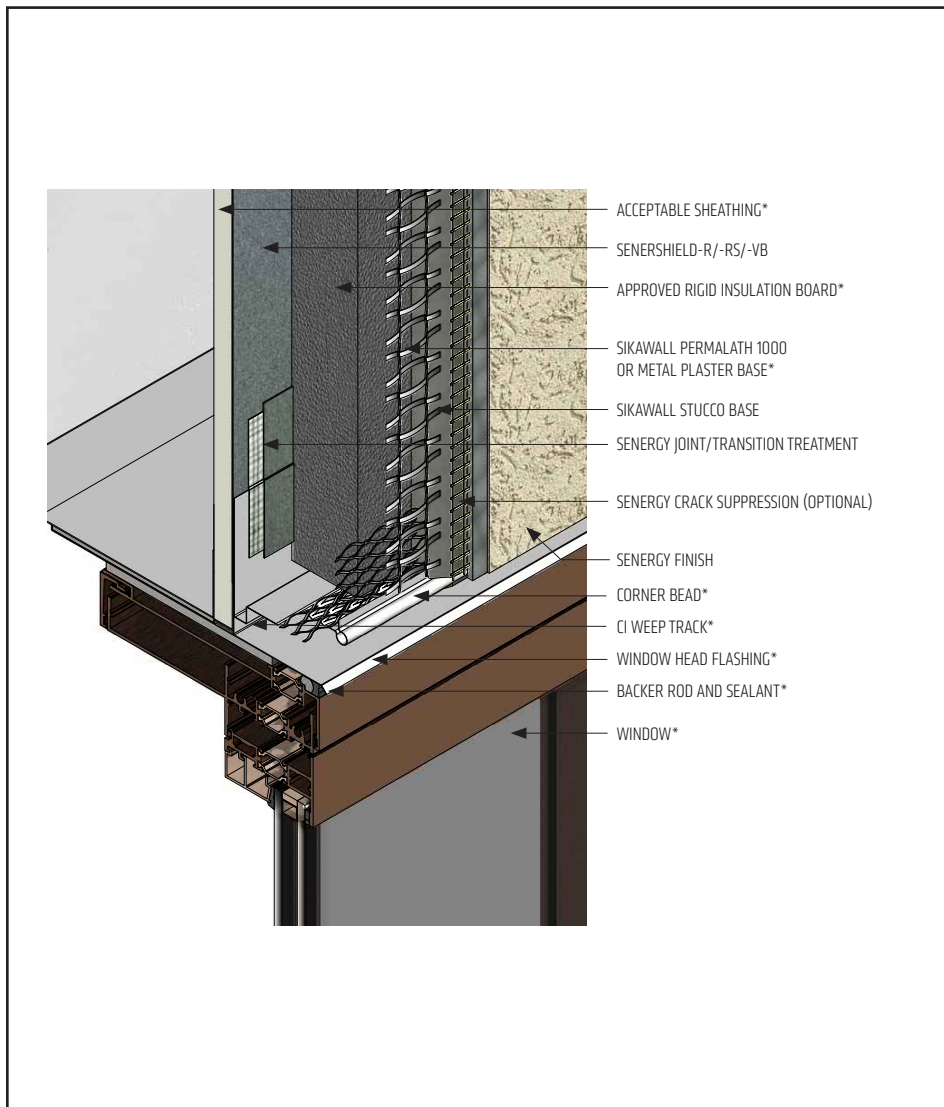
(*NOTE: BY OTHERS)

The details within are the latest recommendations and are represented in good faith by Sika Corporation US (hereinafter Sika). The details are subject to change without notice. Sika accepts no liability for the end use of the details. For conditions not shown, consult Sika for review of specific details.

- Install Sika materials in accordance with current installation instructions.
- Unsatisfactory conditions shall be reported to the General Contractor and corrected before the application of Sika products.

Platinum CI Stucco Plus

TYPICAL WINDOW HEAD (FLUSH)



- Use Senergy Transition Treatment to lap on to the CI Weep Track flange.
- Provide end-dams at flashing terminations.
- Seal flashing drip edge to window frame.
- Senergy Joint/Transition Treatment Options: SikaWall MaxFlash, SikaWall Sheathing Fabric embedded in Senershield-R/-RS/-VB or SikaWall Flash Seal NP.
- Senergy Crack Suppression: Flexguard 4 or SikaWall SRT Mesh embedded in Senergy Base Coat or SikaWall Stucco Surface Leveler.

PCISP-14 2401

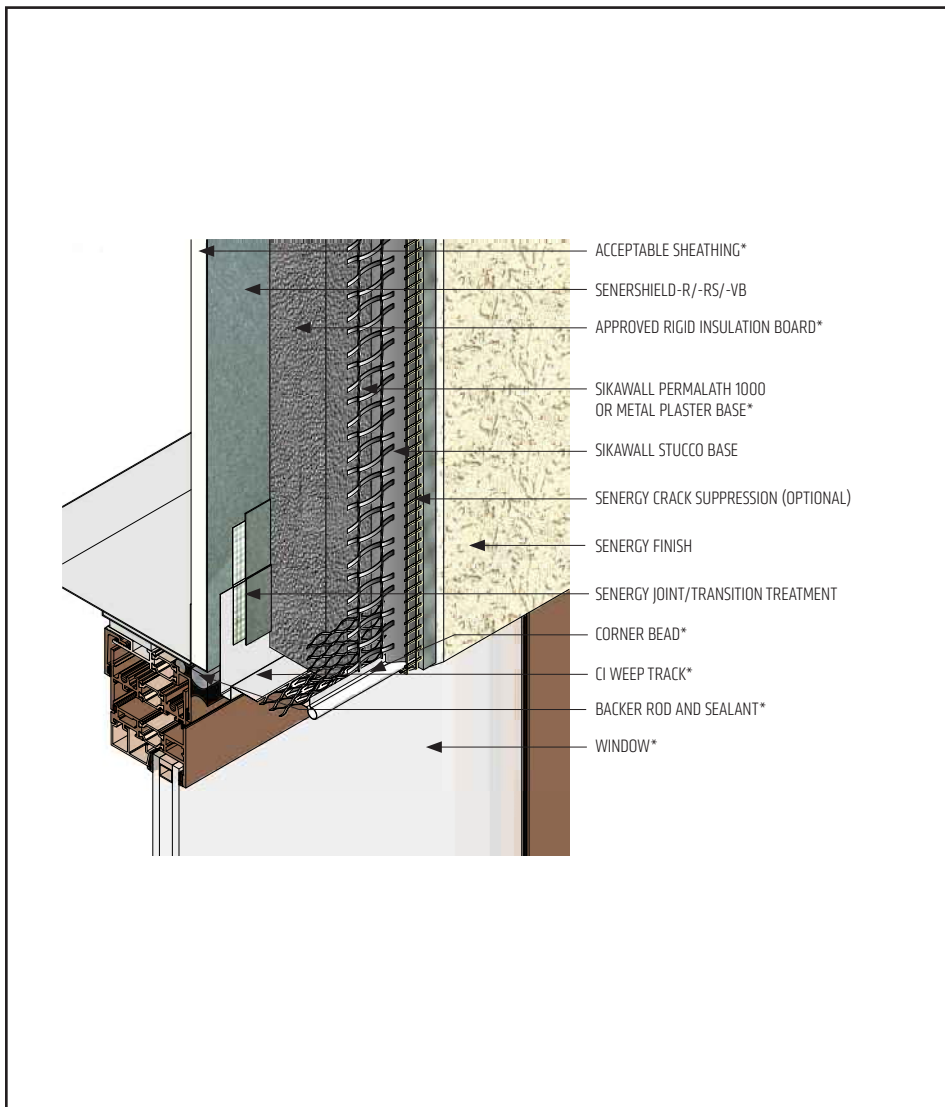
(*NOTE: BY OTHERS)

The details within are the latest recommendations and are represented in good faith by Sika Corporation US (hereinafter Sika). The details are subject to change without notice. Sika accepts no liability for the end use of the details. For conditions not shown, consult Sika for review of specific details.

- Install Sika materials in accordance with current installation instructions.
- Unsatisfactory conditions shall be reported to the General Contractor and corrected before the application of Sika products.

Platinum CI Stucco Plus

TYPICAL WINDOW HEAD (RECESSED)



- Use Senergy Transition Treatment to lap on to the CI Weep Track flange.
- Senergy Joint/Transition Treatment Options: SikaWall MaxFlash, SikaWall Sheathing Fabric embedded in Senershield-R/-RS/-VB or SikaWall Flash Seal NP.
- Senergy Crack Suppression: Flexguard 4 or SikaWall SRT Mesh embedded in Senergy Base Coat or SikaWall Stucco Surface Leveler.

PCISP-15 2401

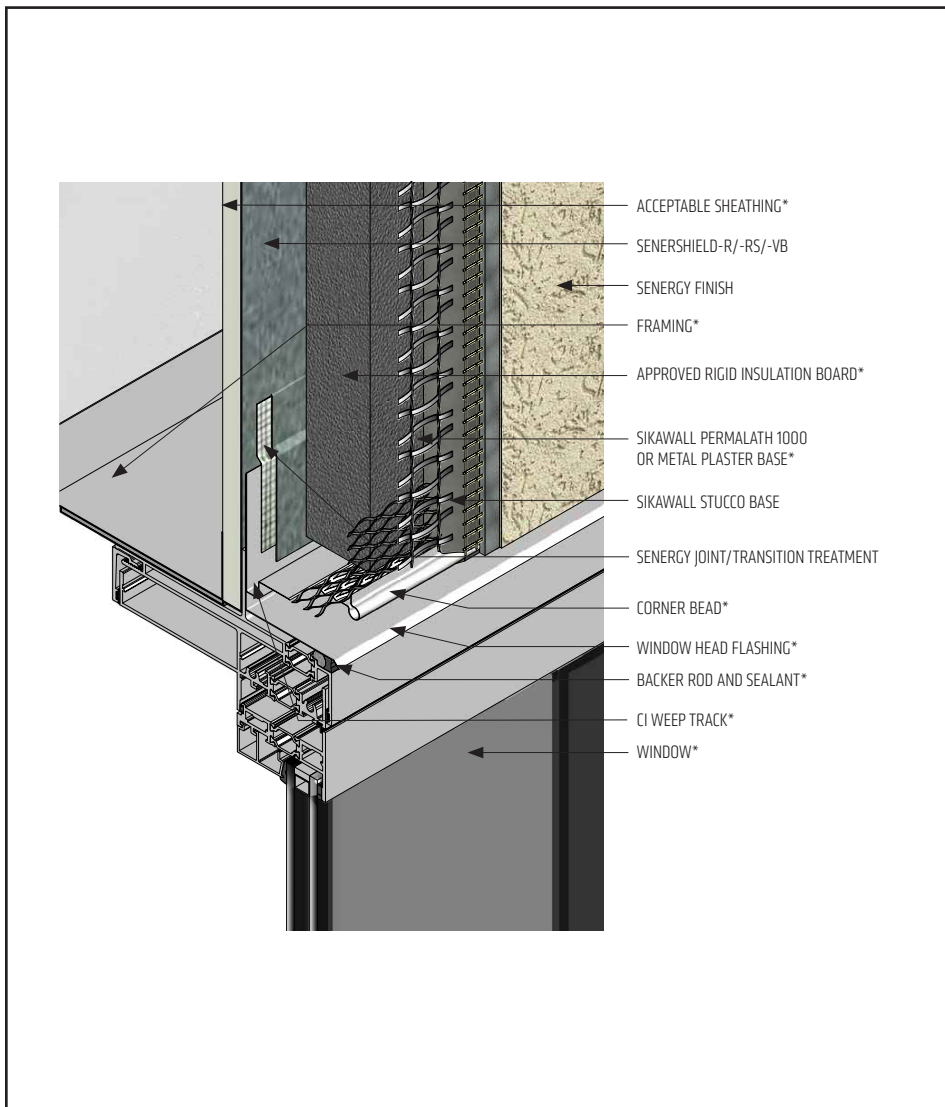
(*NOTE: BY OTHERS)

The details within are the latest recommendations and are represented in good faith by Sika Corporation US (hereinafter Sika). The details are subject to change without notice. Sika accepts no liability for the end use of the details. For conditions not shown, consult Sika for review of specific details.

- Install Sika materials in accordance with current installation instructions.
- Unsatisfactory conditions shall be reported to the General Contractor and corrected before the application of Sika products.

Platinum CI Stucco Plus

TYPICAL FLANGED WINDOW HEAD



- As recommended by window manufacturer, apply sealant to back of window flange at head prior to installation of window.
- Use Senergy Transition Treatment to lap on to the CI Weep Track flange.
- Provide end-dams at flashing terminations.
- Seal flashing drip edge to window frame.
- Senergy Joint/Transition Treatment Options: SikaWall MaxFlash, SikaWall Sheathing Fabric embedded in Senershield-R/-RS/-VB or SikaWall Flash Seal NP.
- Senergy Crack Suppression: Flexguard 4 or SikaWall SRT Mesh embedded in Senergy Base Coat or SikaWall Stucco Surface Leveler.

PCISP-16 2401

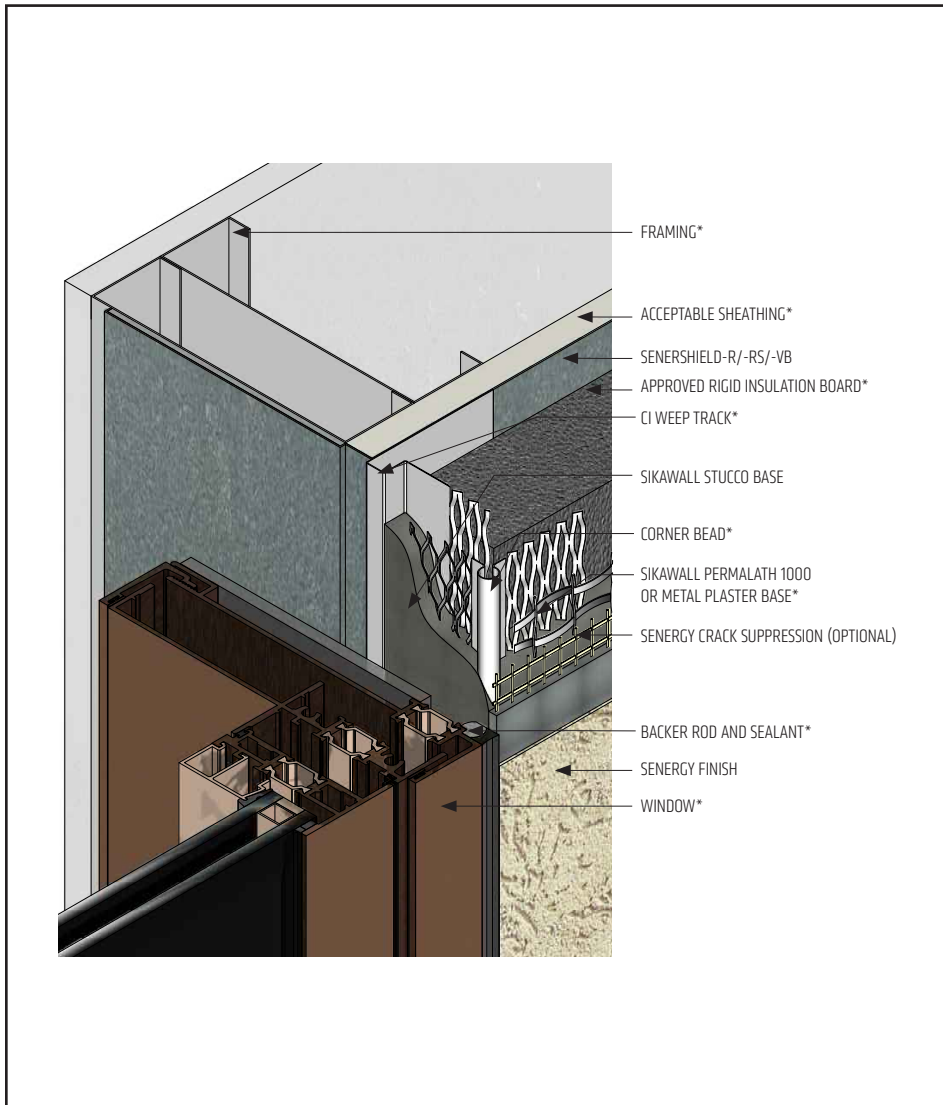
(*NOTE: BY OTHERS)

The details within are the latest recommendations and are represented in good faith by Sika Corporation US (hereinafter Sika). The details are subject to change without notice. Sika accepts no liability for the end use of the details. For conditions not shown, consult Sika for review of specific details.

- Install Sika materials in accordance with current installation instructions.
- Unsatisfactory conditions shall be reported to the General Contractor and corrected before the application of Sika products.

Platinum CI Stucco Plus

TYPICAL WINDOW JAMB (FLUSH)



- Ensure Senersshield-R/-RS/-VB and using Senergy Joint/Transition Treatment are properly applied into rough opening in accordance with application guidelines. Reference Senersshield air/water-resistive barrier details.
- Do not apply finish into joint to receive sealant.
- Use non-hole punched version of CI Weep Track on jambs.
- Senergy Joint/Transition Treatment Options: SikaWall MaxFlash, SikaWall Sheathing Fabric embedded in Senersshield-R/-RS/-VB or SikaWall Flash Seal NP.
- Senergy Crack Suppression: Flexguard 4 or SikaWall SRT Mesh embedded in Senergy Base Coat or SikaWall Stucco Surface Leveler.

PCISP-17 2401

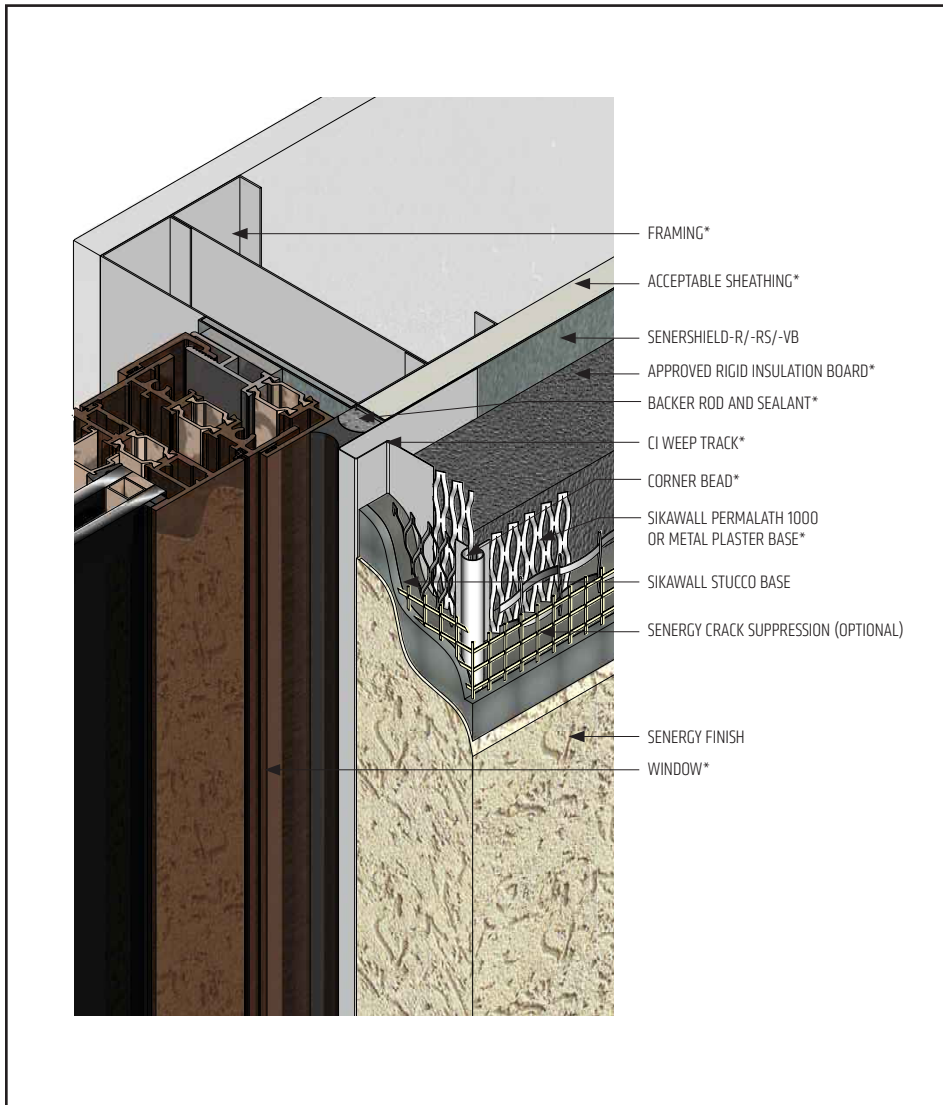
(*NOTE: BY OTHERS)

The details within are the latest recommendations and are represented in good faith by Sika Corporation US (hereinafter Sika). The details are subject to change without notice. Sika accepts no liability for the end use of the details. For conditions not shown, consult Sika for review of specific details.

- Install Sika materials in accordance with current installation instructions.
- Unsatisfactory conditions shall be reported to the General Contractor and corrected before the application of Sika products.

Platinum CI Stucco Plus

TYPICAL WINDOW JAMB (RECESSED)



- Ensure Senersshield-R/-RS/-VB and using Senergy Joint/Transition Treatment are properly applied into rough opening in accordance with application guidelines. Reference Senersshield air/water-resistive barrier details.
- Use non-hole punched version CI Weep Track on jambs.
- Senergy Crack Suppression: Flexguard 4 or SikaWall SRT Mesh embedded in Senergy Base Coat or SikaWall Stucco Surface Leveler.
- Senergy Joint/Transition Treatment Options: SikaWall MaxFlash, SikaWall Sheathing Fabric embedded in Senersshield-R/-RS/-VB or SikaWall Flash Seal NP.

PCISP-18 2401

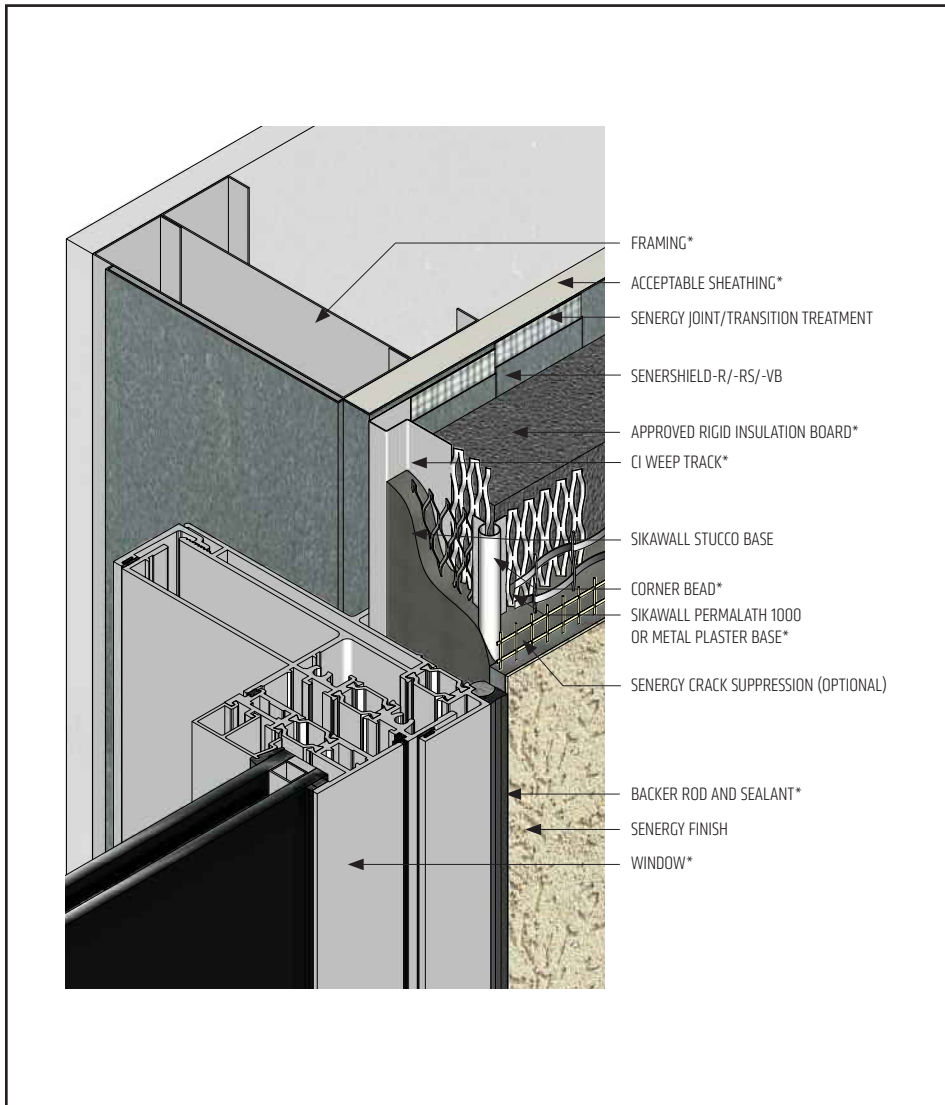
(*NOTE: BY OTHERS)

The details within are the latest recommendations and are represented in good faith by Sika Corporation US (hereinafter Sika). The details are subject to change without notice. Sika accepts no liability for the end use of the details. For conditions not shown, consult Sika for review of specific details.

- Install Sika materials in accordance with current installation instructions.
- Unsatisfactory conditions shall be reported to the General Contractor and corrected before the application of Sika products.

Platinum CI Stucco Plus

TYPICAL FLANGED WINDOW JAMB



PCISP-19 2401

(*NOTE: BY OTHERS)

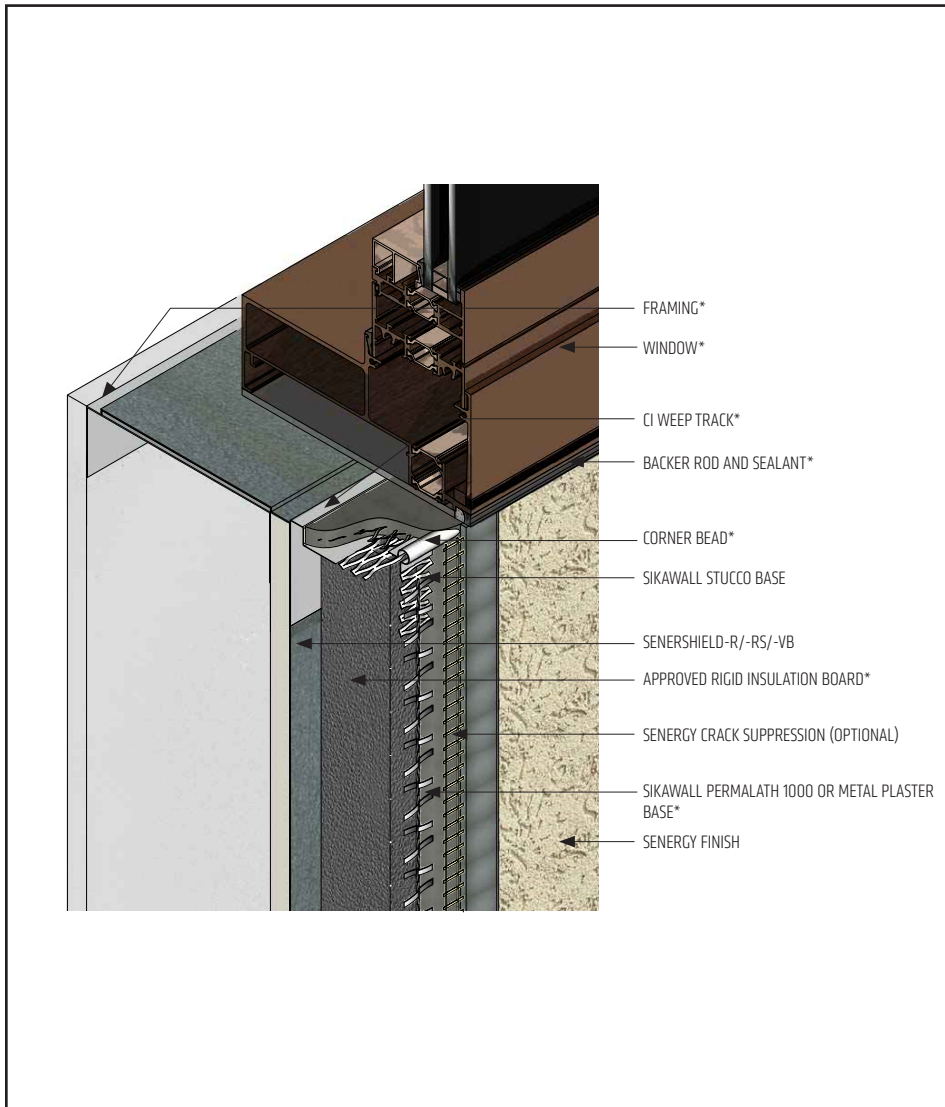
- Ensure Senergy air/water-resistive barrier is properly applied into rough openings in accordance with application guidelines. Reference Senershield air/water-resistive barrier details.
- As recommended by window manufacturer, apply sealant to back of window flange at jamb prior to installation of window.
- Use non-hole punched version of CI Weep Track on jambs.
- Use Senergy Transition Treatment to lap on to the CI Weep Track flange.
- Senergy Joint/Transition Treatment Options: SikaWall MaxFlash, SikaWall Sheathing Fabric embedded in Senershield-R/-RS/-VB or SikaWall Flash Seal NP.
- Senergy Crack Suppression: Flexguard 4 or SikaWall SRT Mesh embedded in Senergy Base Coat or SikaWall Stucco Surface Leveler.
- Reference "Acceptable Sealants for use with Senergy Wall Systems" Technical Bulletin for a list of sealants.

The details within are the latest recommendations and are represented in good faith by Sika Corporation US (hereinafter Sika). The details are subject to change without notice. Sika accepts no liability for the end use of the details. For conditions not shown, consult Sika for review of specific details.

- Install Sika materials in accordance with current installation instructions.
- Unsatisfactory conditions shall be reported to the General Contractor and corrected before the application of Sika products.

Platinum CI Stucco Plus

TYPICAL WINDOW SILL (FLUSH)



- Ensure Senergy air/water-resistive barrier is properly applied into rough opening in accordance with application guidelines. Reference Senershield air/water-resistive barrier details.
- Do not apply finish into joint to receive sealant.
- Use non-hole punched version of CI Weep Track on sill.
- Senergy Joint/Transition Treatment Options: SikaWall MaxFlash, SikaWall Sheathing Fabric embedded in Senershield-R/-RS/-VB or SikaWall Flash Seal NP.
- Senergy Crack Suppression: Flexguard 4 or SikaWall SRT Mesh embedded in Senergy Base Coat or SikaWall Stucco Surface Leveler.

PCISP-20 2401

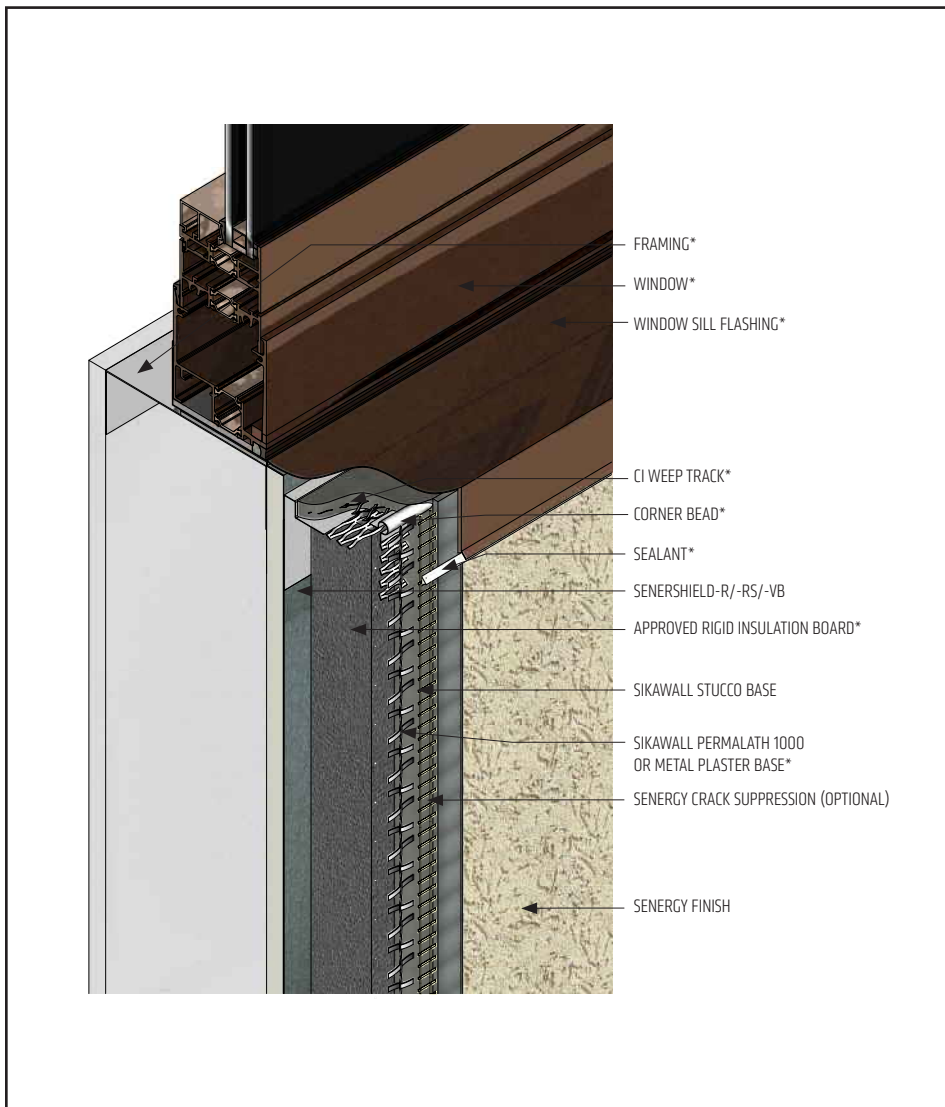
(*NOTE: BY OTHERS)

The details within are the latest recommendations and are represented in good faith by Sika Corporation US (hereinafter Sika). The details are subject to change without notice. Sika accepts no liability for the end use of the details. For conditions not shown, consult Sika for review of specific details.

- Install Sika materials in accordance with current installation instructions.
- Unsatisfactory conditions shall be reported to the General Contractor and corrected before the application of Sika products.

Platinum CI Stucco Plus

TYPICAL WINDOW SILL (RECESSED)



- Ensure Senergy air/water-resistive barrier is properly applied into rough opening in accordance with application guidelines. Reference Senershield air/water-resistive barrier details.
- Use non-hole punched version of CI Weep Track on sill.
- Senergy Crack Suppression: Flexguard 4 or SikaWall SRT Mesh embedded in Senergy Base Coat or SikaWall Stucco Surface Leveler.

PCISP-21 2401

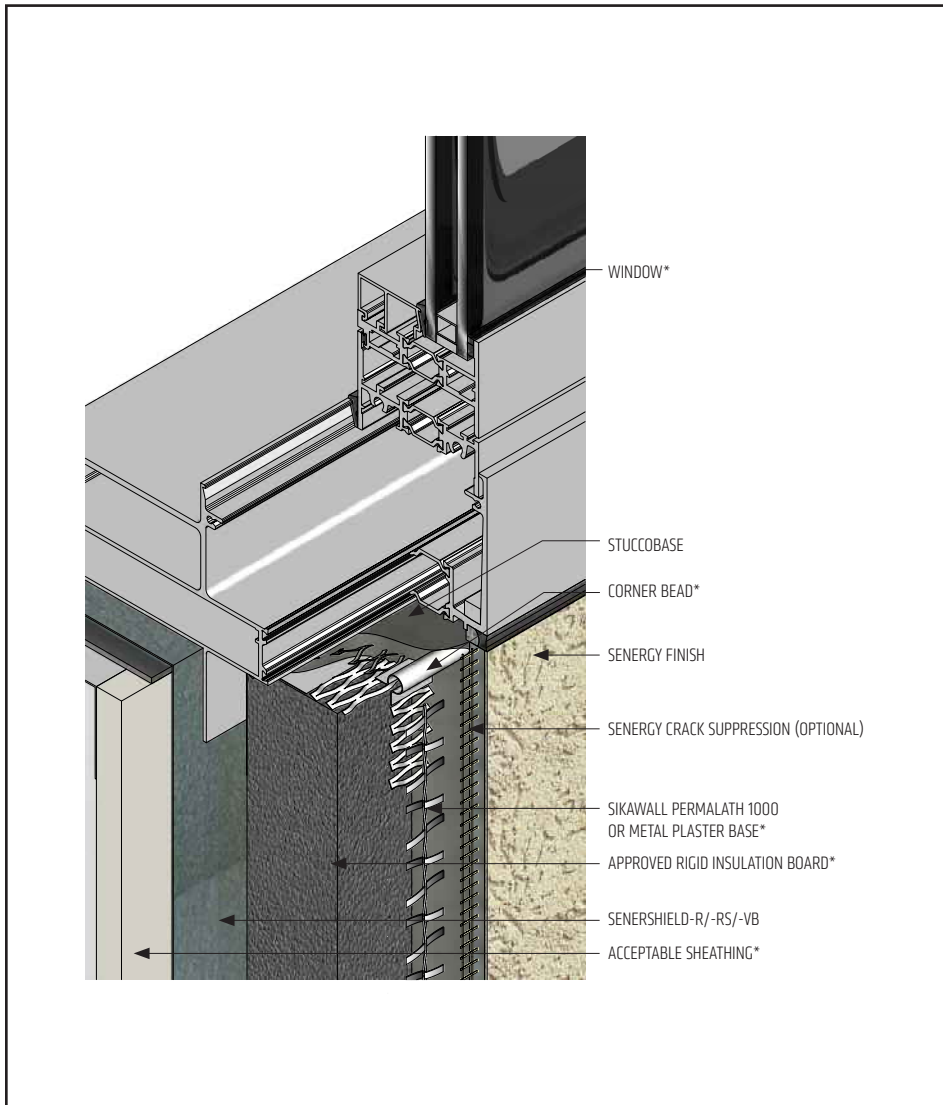
(*NOTE: BY OTHERS)

The details within are the latest recommendations and are represented in good faith by Sika Corporation US (hereinafter Sika). The details are subject to change without notice. Sika accepts no liability for the end use of the details. For conditions not shown, consult Sika for review of specific details.

- Install Sika materials in accordance with current installation instructions.
- Unsatisfactory conditions shall be reported to the General Contractor and corrected before the application of Sika products.

Platinum CI Stucco Plus

TYPICAL FLANGED WINDOW SILL



- Ensure Senergy air/water-resistive barrier is properly applied into rough opening in accordance with application guidelines. Reference Senershield air/water-resistive barrier details.
- Do not seal window sill flange unless recommended by window manufacturer.
- Use non-hole punched version of CI Weep Track on sill.
- Senergy Crack Suppression: Flexguard 4 or SikaWall SRT Mesh embedded in Senergy Base Coat or SikaWall Stucco Surface Leveler.

PCISP-22 2401

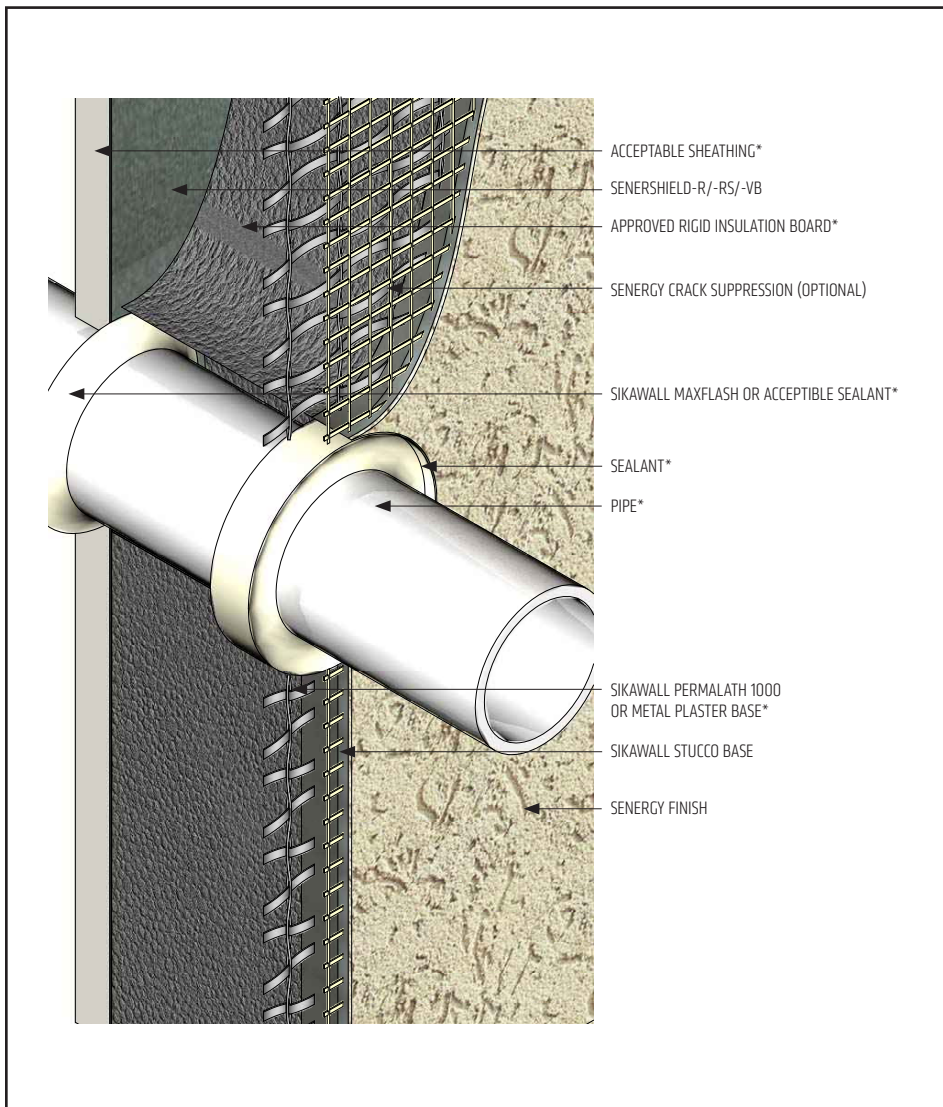
(*NOTE: BY OTHERS)

The details within are the latest recommendations and are represented in good faith by Sika Corporation US (hereinafter Sika). The details are subject to change without notice. Sika accepts no liability for the end use of the details. For conditions not shown, consult Sika for review of specific details.

- Install Sika materials in accordance with current installation instructions.
- Unsatisfactory conditions shall be reported to the General Contractor and corrected before the application of Sika products.

Platinum CI Stucco Plus

TYPICAL PIPE PENETRATION



- Senergy Transition Treatment can be applied from sheathing onto pipe in lieu of the secondary seal.
- Ensure all penetrations through the Platinum CI Stucco Plus system are properly sealed.
- Provide continuous air seal around perimeter of penetration prior to rigid insulation application.
- Senergy Crack Suppression: Flexguard 4 or SikaWall SRT Mesh embedded in Senergy Base Coat or SikaWall Stucco Surface Leveler.
- Senergy Joint/Transition Treatment Options: SikaWall MaxFlash, SikaWall Sheathing Fabric embedded in Senershield-R/-RS/-VB or SikaWall Flash Seal NP.
- Reference "Acceptable Sealants for use with Senergy Wall Systems" Technical Bulletin for a list of sealants.

PCISP-23 2401

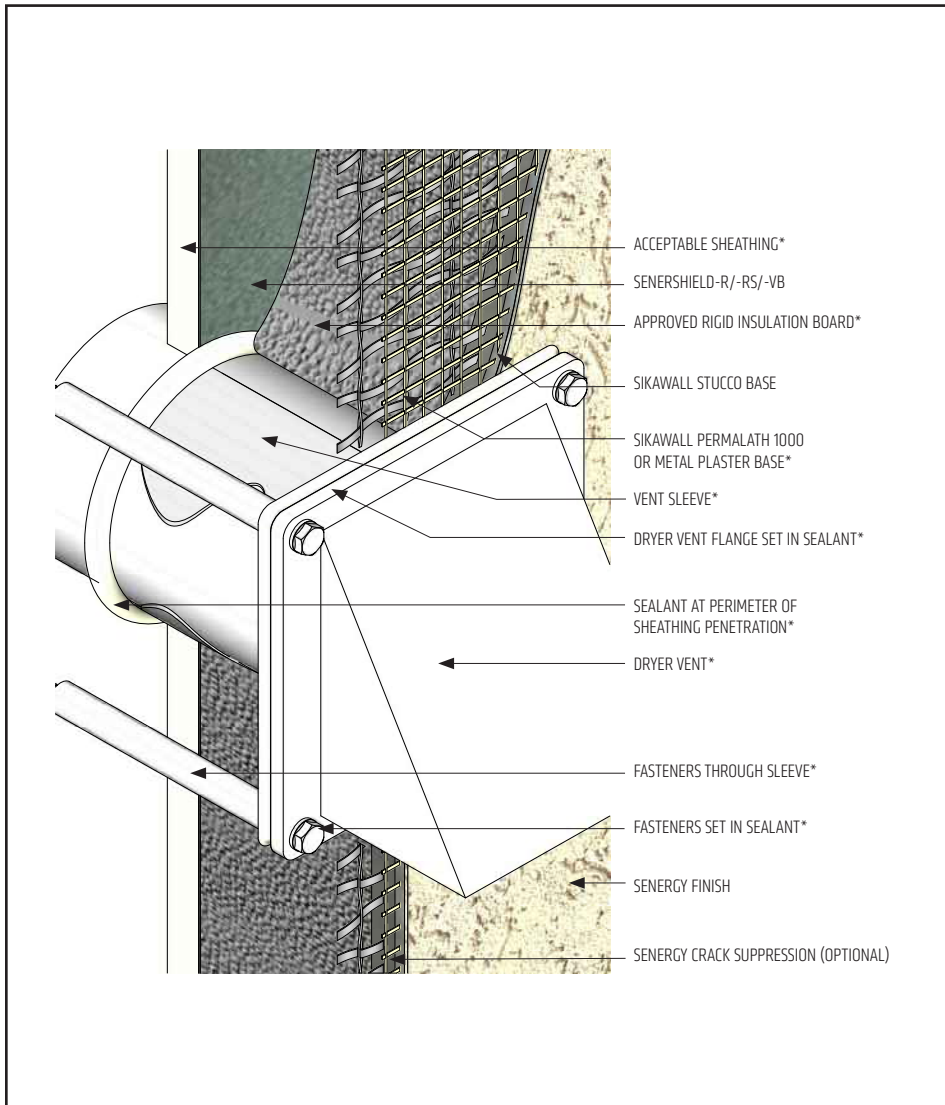
(*NOTE: BY OTHERS)

The details within are the latest recommendations and are represented in good faith by Sika Corporation US (hereinafter Sika). The details are subject to change without notice. Sika accepts no liability for the end use of the details. For conditions not shown, consult Sika for review of specific details.

- Install Sika materials in accordance with current installation instructions.
- Unsatisfactory conditions shall be reported to the General Contractor and corrected before the application of Sika products.

Platinum CI Stucco Plus

TYPICAL DRYER VENT



- Senergy Transition Treatment can be applied from sheathing onto pipe in lieu of the secondary seal.
- Ensure all fastener penetrations through the Platinum CI Stucco Plus system are properly sealed.
- Senergy Joint/Transition Treatment Options: SikaWall MaxFlash, SikaWall Sheathing Fabric embedded in Senershield-R/-RS/-VB or SikaWall Flash Seal NP.
- Senergy Crack Suppression: Flexguard 4 or SikaWall SRT Mesh embedded in Senergy Base Coat or SikaWall Stucco Surface Leveler.

PCISP-24 2401

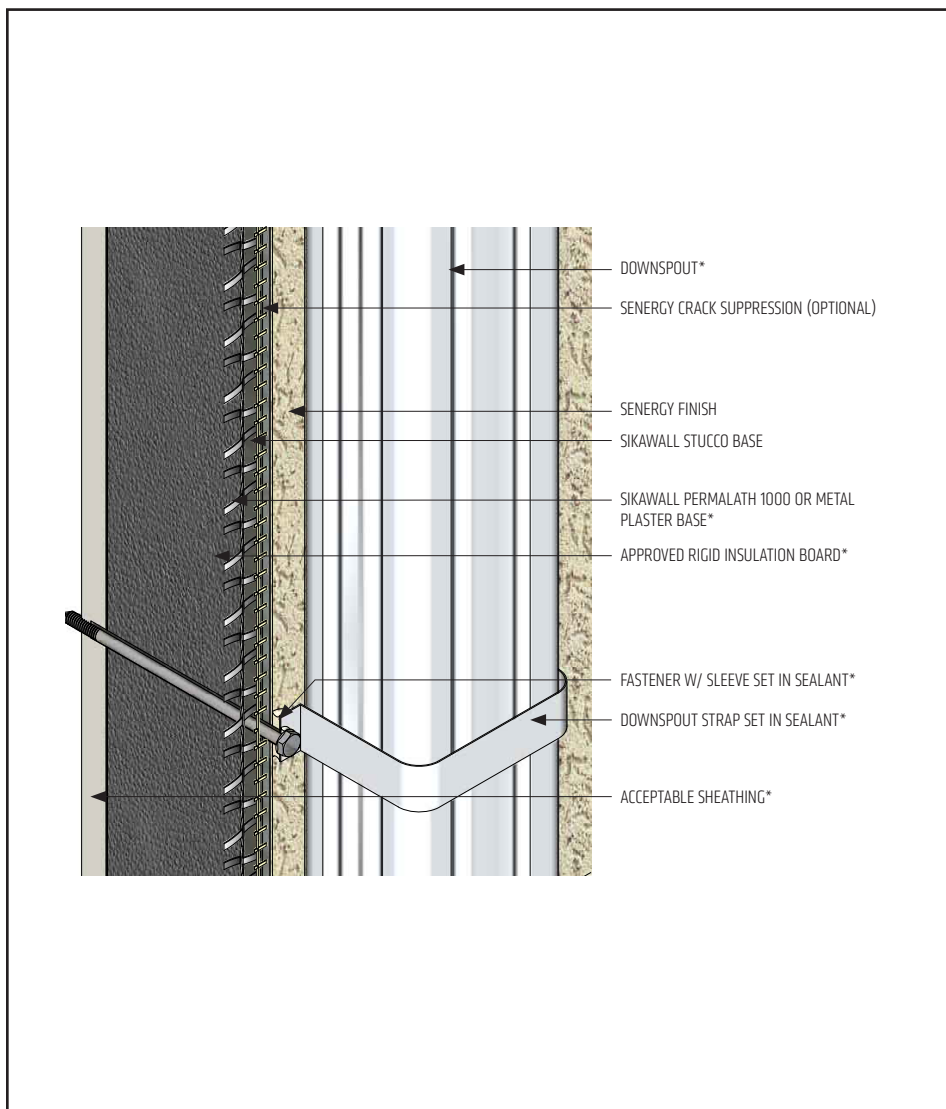
(*NOTE: BY OTHERS)

The details within are the latest recommendations and are represented in good faith by Sika Corporation US (hereinafter Sika). The details are subject to change without notice. Sika accepts no liability for the end use of the details. For conditions not shown, consult Sika for review of specific details.

- Install Sika materials in accordance with current installation instructions.
- Unsatisfactory conditions shall be reported to the General Contractor and corrected before the application of Sika products.

Platinum CI Stucco Plus

TYPICAL DOWNSPOUT



- Ensure all fastener penetrations through the Platinum CI Stucco Plus system are properly sealed.
- Senergy Crack Suppression: Flexguard 4 or SikaWall SRT Mesh embedded in Senergy Base Coat or SikaWall Stucco Surface Leveler.

PCISP-25 2401

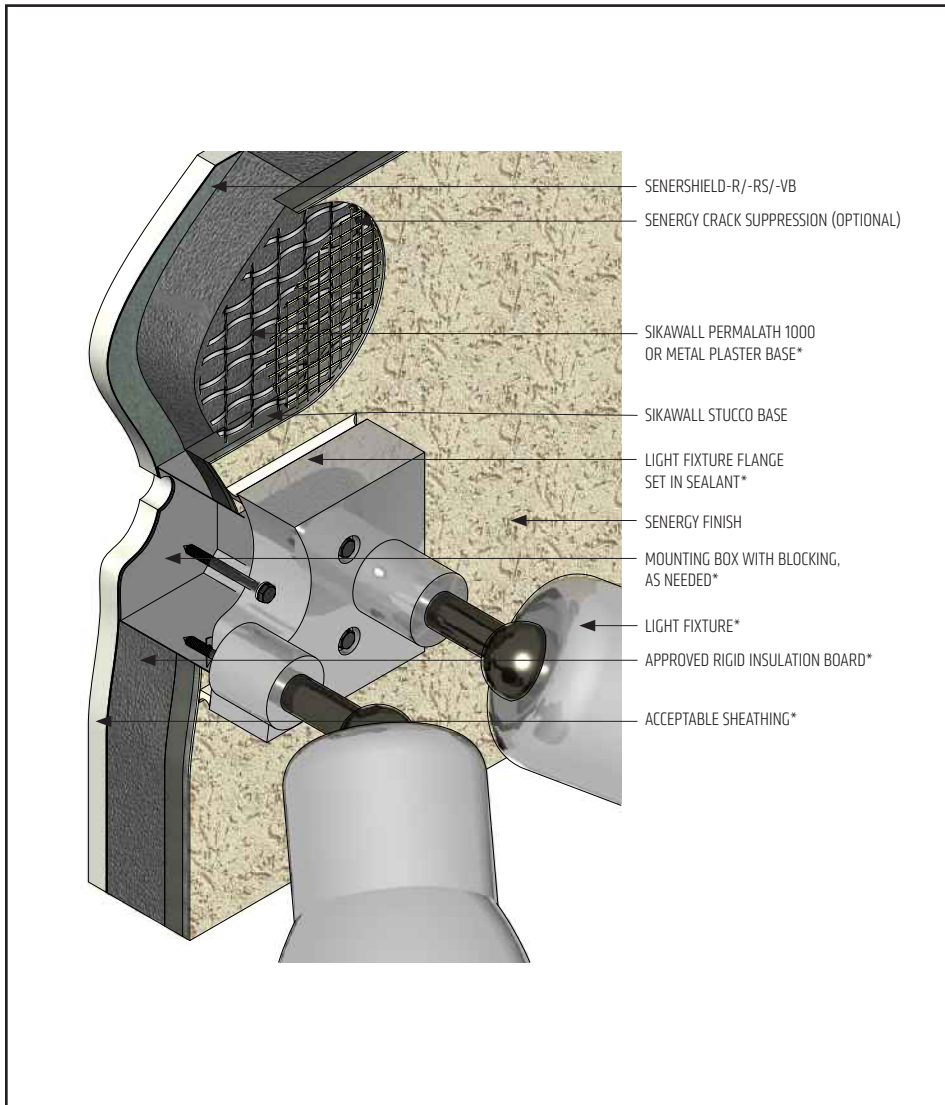
(*NOTE: BY OTHERS)

The details within are the latest recommendations and are represented in good faith by Sika Corporation US (hereinafter Sika). The details are subject to change without notice. Sika accepts no liability for the end use of the details. For conditions not shown, consult Sika for review of specific details.

- Install Sika materials in accordance with current installation instructions.
- Unsatisfactory conditions shall be reported to the General Contractor and corrected before the application of Sika products.

Platinum CI Stucco Plus

TYPICAL LIGHT FIXTURE



- Ensure all penetrations through the Platinum CI Stucco Plus system are properly sealed.
- Senergy Crack Suppression: Flexguard 4 or SikaWall SRT Mesh embedded in Senergy Base Coat or SikaWall Stucco Surface Leveler.

PCISP-26 2401

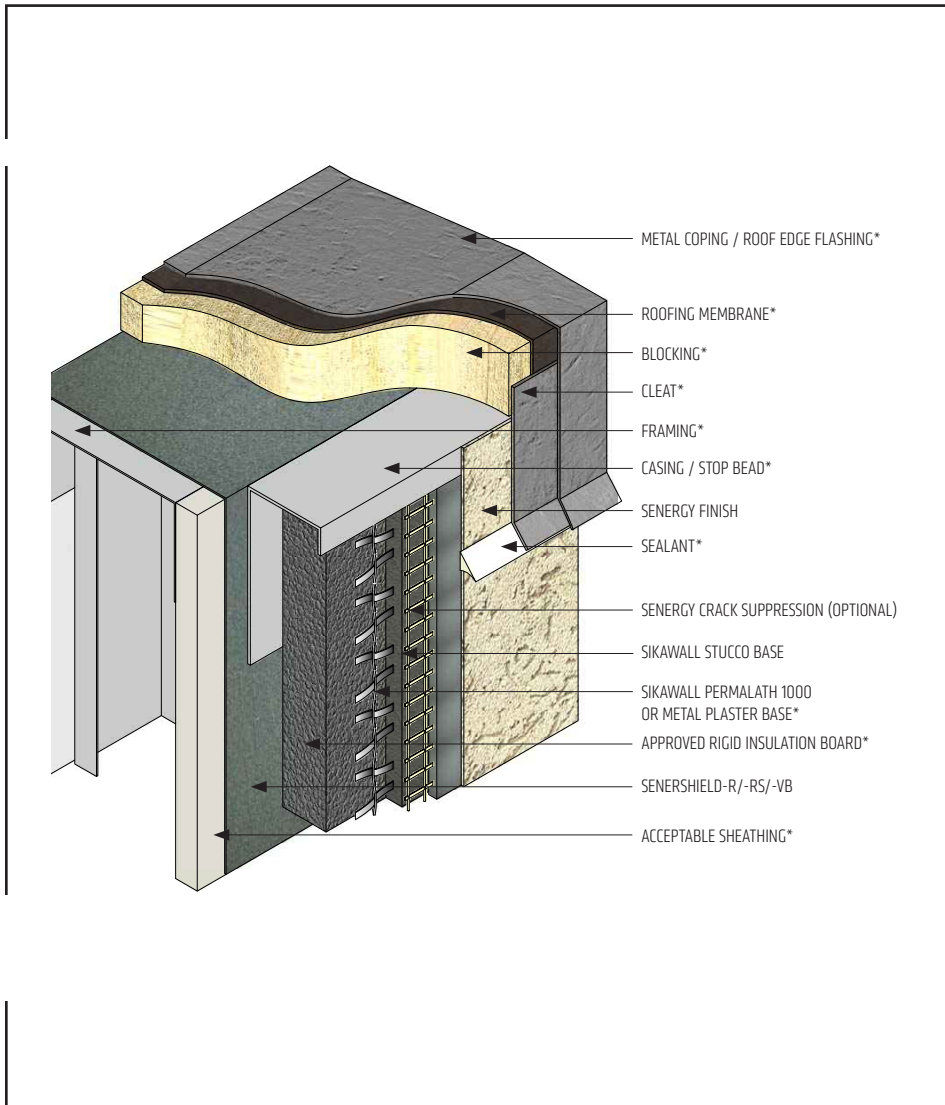
(*NOTE: BY OTHERS)

The details within are the latest recommendations and are represented in good faith by Sika Corporation US (hereinafter Sika). The details are subject to change without notice. Sika accepts no liability for the end use of the details. For conditions not shown, consult Sika for review of specific details.

- Install Sika materials in accordance with current installation instructions.
- Unsatisfactory conditions shall be reported to the General Contractor and corrected before the application of Sika products.

Platinum CI Stucco Plus

TYPICAL TERMINATION AT METAL COPING / ROOF EDGE FLASHING – OPTION 01



- Lap coping or roof edge flashing over the Platinum CI Stucco Plus system a minimum of 2" (50 mm) with drip edge sealed.
- Senergy Crack Suppression: Flexguard 4 or SikaWall SRT Mesh embedded in Senergy Base Coat or SikaWall Stucco Surface Leveler.
- Extend Senershield-R/-RS/-VB or SikaWall MaxFlash onto bottom of blocking or provide alternate air seal at sheathing termination to blocking.
- Reference "Acceptable Sealants for use with Senergy Wall Systems" Technical Bulletin for a list of sealants.

PCISP-27 2401

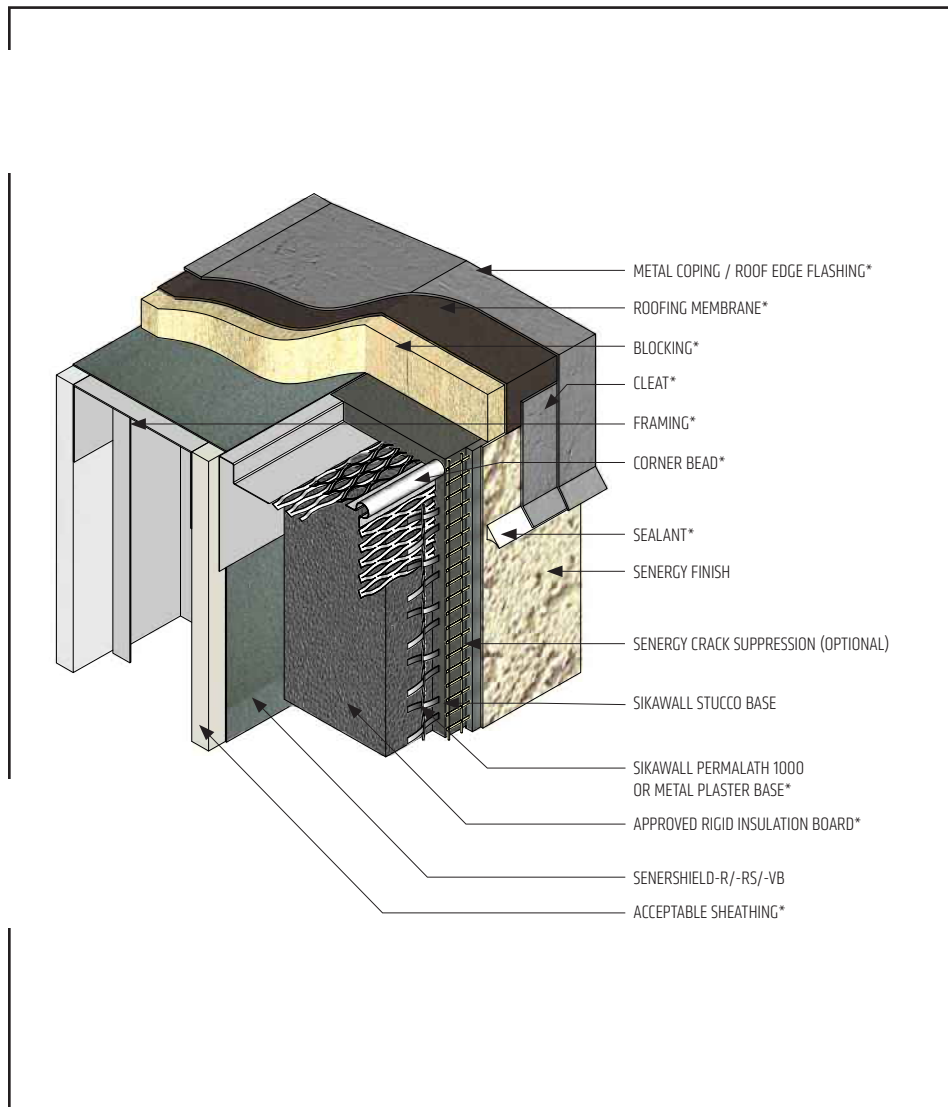
(*NOTE: BY OTHERS)

The details within are the latest recommendations and are represented in good faith by Sika Corporation US (hereinafter Sika). The details are subject to change without notice. Sika accepts no liability for the end use of the details. For conditions not shown, consult Sika for review of specific details.

- Install Sika materials in accordance with current installation instructions.
- Unsatisfactory conditions shall be reported to the General Contractor and corrected before the application of Sika products.

Platinum CI Stucco Plus

TYPICAL TERMINATION AT METAL COPING / ROOF EDGE FLASHING – OPTION 02



- Lap coping or roof edge flashing over the Platinum CI Stucco Plus system a minimum of 2" (50 mm) with drip edge sealed.
- Senergy Crack Suppression: Flexguard 4 or SikaWall SRT Mesh embedded in Senergy Base Coat or SikaWall Stucco Surface Leveler.
- Extend Senersshield-R/-RS/-VB or MaxFlash onto bottom of blocking or provide alternate air seal at sheathing termination to blocking.
- Reference "Acceptable Sealants for use with Senergy Wall Systems" Technical Bulletin for a list of sealants.

PCISP-28 2401

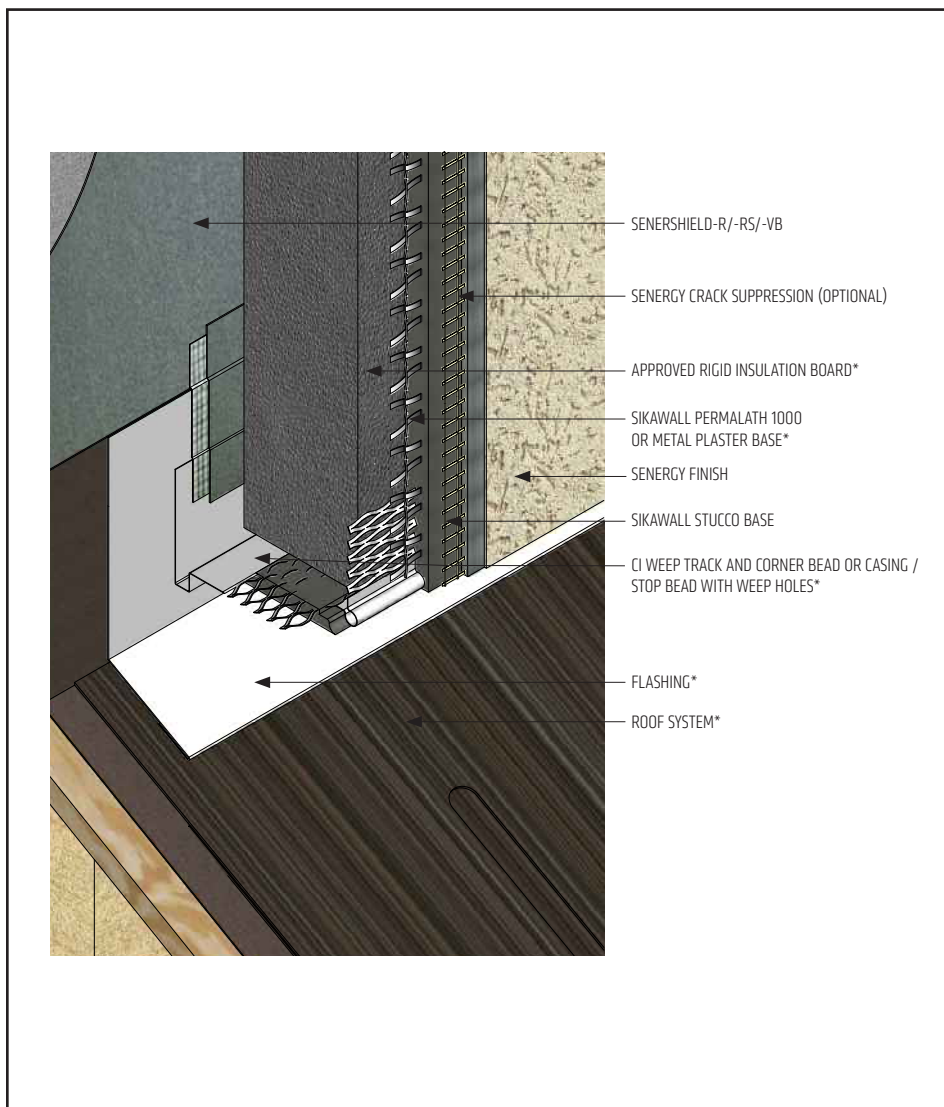
(*NOTE: BY OTHERS)

The details within are the latest recommendations and are represented in good faith by Sika Corporation US (hereinafter Sika). The details are subject to change without notice. Sika accepts no liability for the end use of the details. For conditions not shown, consult Sika for review of specific details.

- Install Sika materials in accordance with current installation instructions.
- Unsatisfactory conditions shall be reported to the General Contractor and corrected before the application of Sika products.

Platinum CI Stucco Plus

TYPICAL FASTENING / TERMINATION AT ROOF



- Use Senergy Transition Treatment to lap on to the CI Weep Track flange.
- Terminate Platinum CI Stucco Plus system a minimum of 2" (50 mm) above sloped roof.
- Senergy Crack Suppression: Flexguard 4 or SikaWall SRT Mesh embedded in Senergy Base Coat or SikaWall Stucco Surface Leveler.
- Senergy Joint/Transition Treatment Options: SikaWall MaxFlash, SikaWall Sheathing Fabric embedded in Senershield-R/-RS/-VB or SikaWall Flash Seal NP.

PCISP-29 2401

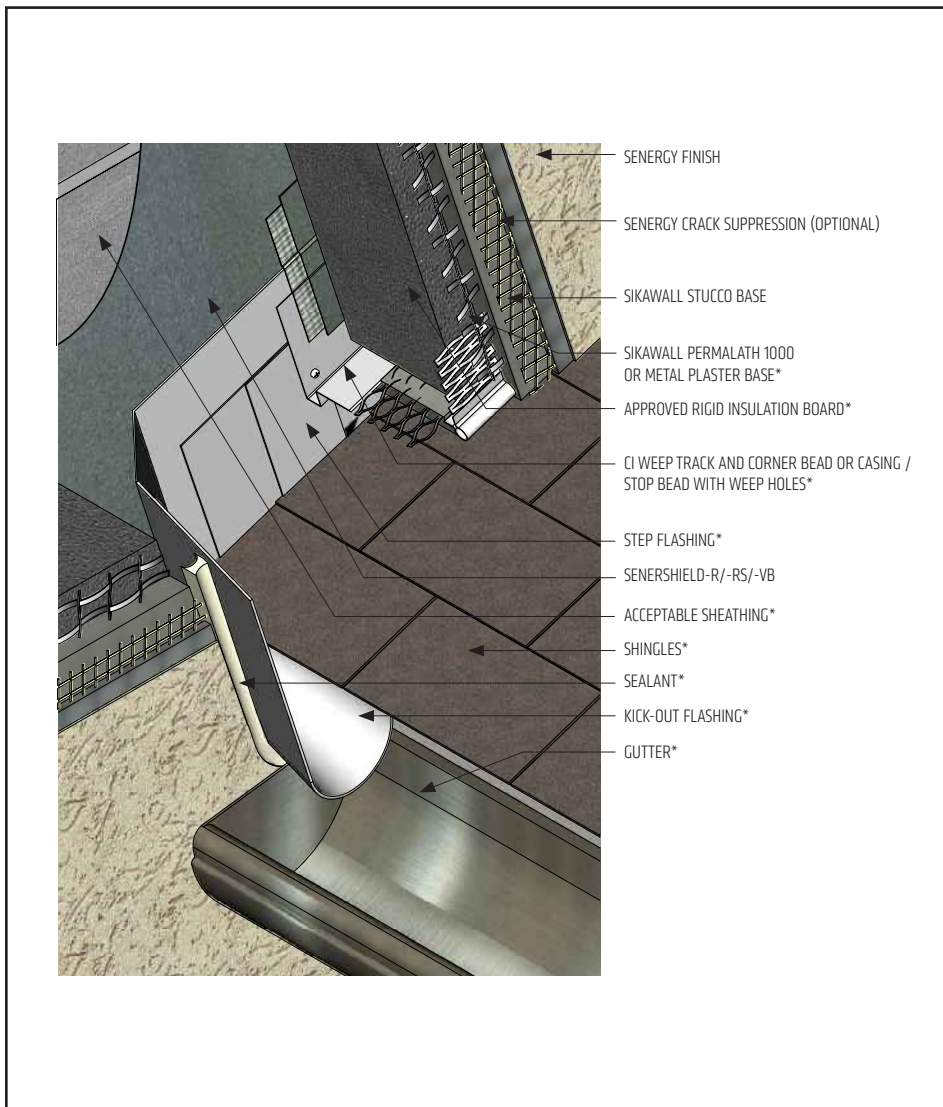
(*NOTE: BY OTHERS)

The details within are the latest recommendations and are represented in good faith by Sika Corporation US (hereinafter Sika). The details are subject to change without notice. Sika accepts no liability for the end use of the details. For conditions not shown, consult Sika for review of specific details.

- Install Sika materials in accordance with current installation instructions.
- Unsatisfactory conditions shall be reported to the General Contractor and corrected before the application of Sika products.

Platinum CI Stucco Plus

TYPICAL KICK-OUT FLASHING



- Use Senergy Transition Treatment to lap on to the CI Weep Track flange.
- Terminate Platinum CI Stucco Plus system a minimum of 2" (50 mm) above sloped roof.
- Extend step flashing 2" (50 mm) behind Platinum CI Stucco Plus system.
- Kickout flashing: sealed or soldered seams, recommended minimum 4" (100 mm) in height, extend 2" (50 mm) from wall and angled to direct water into gutter/away from wall surface.
- Senergy Joint/Transition Treatment Options: SikaWall MaxFlash, SikaWall Sheathing Fabric embedded in Senershield-R/-RS/-VB or SikaWall Flash Seal NP.
- Senergy Crack Suppression: Flexguard 4 or SikaWall SRT Mesh embedded in Senergy Base Coat or SikaWall Stucco Surface Leveler.

PCISP-30 2401

(*NOTE: BY OTHERS)

The details within are the latest recommendations and are represented in good faith by Sika Corporation US (hereinafter Sika). The details are subject to change without notice. Sika accepts no liability for the end use of the details. For conditions not shown, consult Sika for review of specific details.

- Install Sika materials in accordance with current installation instructions.
- Unsatisfactory conditions shall be reported to the General Contractor and corrected before the application of Sika products.



LIMITED WARRANTY NOTICE

Prior to each use of any product of Sika Corporation, its subsidiaries or affiliates ("SIKA"), the user must always read and follow the warnings and instructions on the product's most current product label, Product Data Sheet and Safety Data Sheet which are available at usa.sika.com/senenergy or by calling our Technical Service Department at +1 (800) 589-1336.

Nothing contained in any SIKA literature or materials relieves the user of the obligation to read and follow the warnings and instructions for each SIKA product as set forth in the current product label, Product Data Sheet and Safety Data Sheet prior to use of the SIKA product.

SIKA warrants this product for one year from date of installation to be free from manufacturing defects and to meet the technical properties on the current Product Data Sheet if used as directed within the product's shelf life. User determines suitability of product for intended use and assumes all risks. User's and/or buyer's sole remedy shall be limited to the purchase price or replacement of this product exclusive of any labor costs. NO OTHER WARRANTIES EXPRESS OR IMPLIED SHALL APPLY INCLUDING ANY WARRANTY OF MERCHANTABILITY OR FITNESS FOR A PARTICULAR PURPOSE. SIKA SHALL NOT BE LIABLE UNDER ANY LEGAL THEORY FOR SPECIAL OR CONSEQUENTIAL DAMAGES. SIKA SHALL NOT BE RESPONSIBLE FOR THE USE OF THIS PRODUCT IN A MANNER TO INFRINGE ON ANY PATENT OR ANY OTHER INTELLECTUAL PROPERTY RIGHTS HELD BY OTHERS. Sale of SIKA products are subject to the Terms and Conditions of Sale which are available at usa.sika.com.

For the most current version of this literature, please visit our website at usa.sika.com/senergy.

Sika Corporation

201 Polito Avenue
Lyndhurst, NJ 07071 USA
Customer Service +1 (800) 433-9517
Technical Service +1 (800) 589-1336
usa.sika.com/senergy

Rev April 2024

BUILDING TRUST

