

LaHabra®



FinePanel Secondary Weather Barrier Design

Typical 2D Details

BUILDING TRUST



FinePanel Secondary Weather Barrier Design

Typical 2D Details

Table of Contents

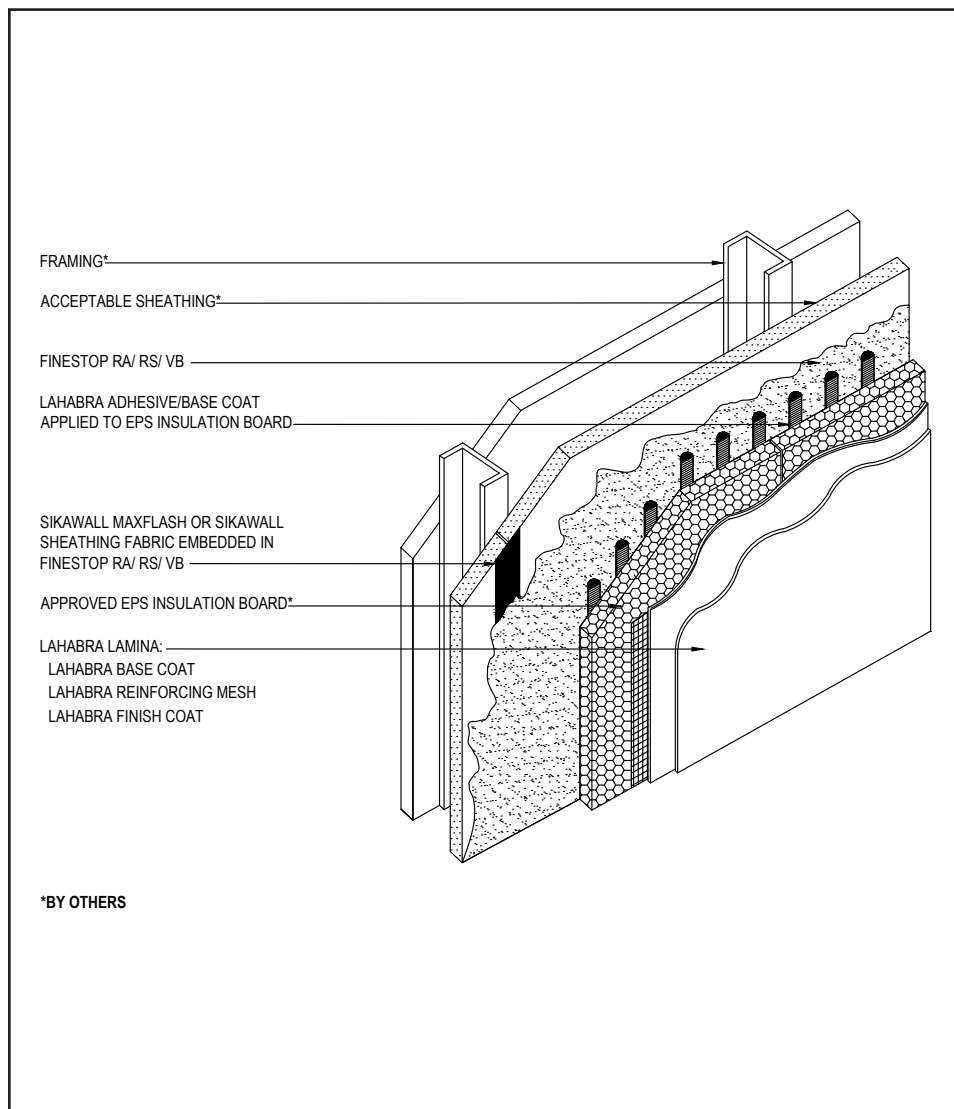
1. Typical Application (Isometric)
2. Horizontal Panel to Panel Joint
3. Vertical Panel to Panel Joint
4. Inside Corner
5. Outside Corner
6. Aesthetic Reveal
7. Pipe Penetration
8. Light Fixture
9. Window Head (Flush)
10. Window Head (Recessed)
11. Window Jamb (Flush)
12. Window Sill (Flush)
13. Window Jamb (Recessed)
14. Window Sill (Recessed)
15. Sign Attachment

Notes:

- **The details within are the latest recommendations and are represented in good faith by Sika Corporation US (hereinafter Sika). The details are subject to change without notice. Sika accepts no liability for the end use of the details. For conditions not shown, consult Sika for review of specific detail.**
- **Install Sika materials in accordance with current installation instructions.**
- **Unsatisfactory conditions shall be reported to the General Contractor and corrected before the application of Sika products.**

FinePanel Secondary Weather Barrier Design

TYPICAL APPLICATION (ISOMETRIC)



- All terminations must be fully encapsulated with mesh reinforced base coat.
- Ensure Finestop air/water-resistive barrier is applied per product application guidelines published details.

01 0524

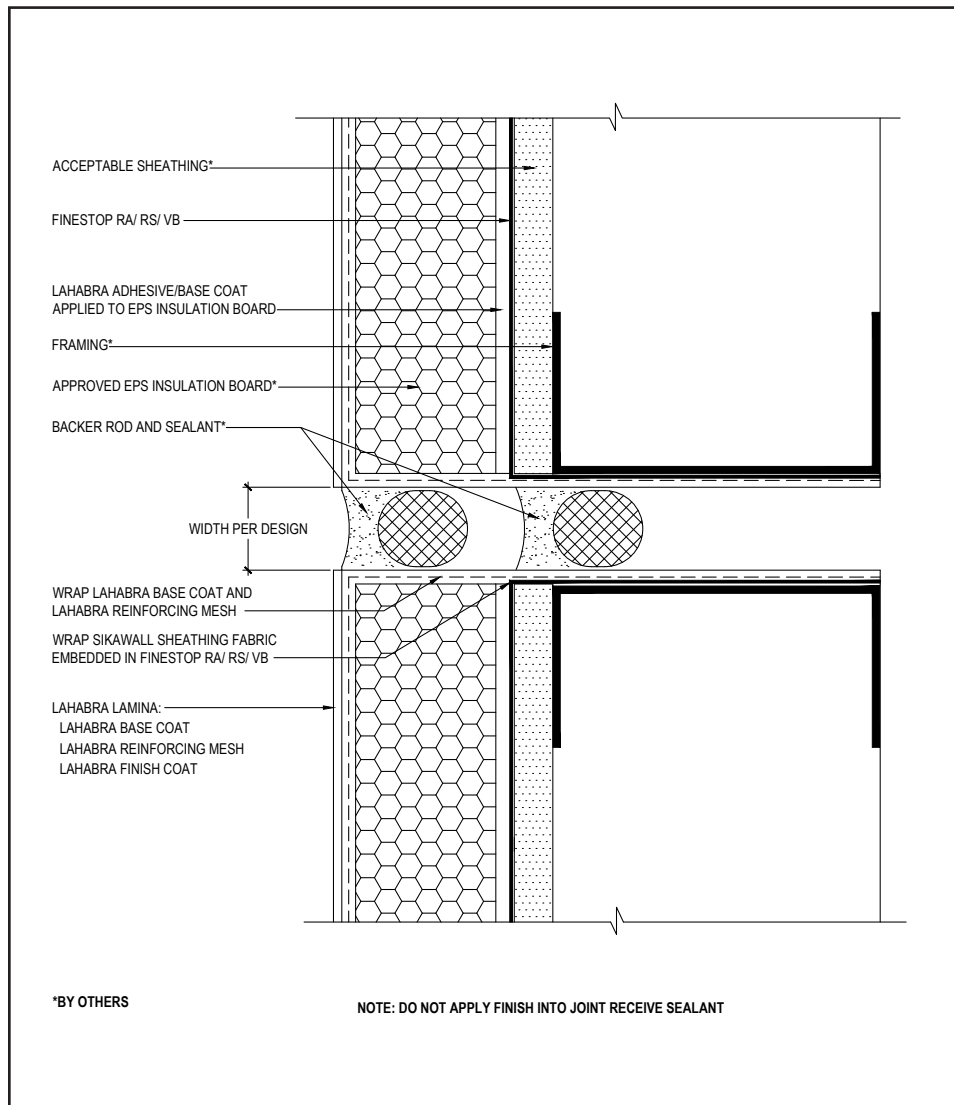
(*NOTE: BY OTHERS)

The details within are the latest recommendations and are represented in good faith by Sika Corporation US (hereinafter Sika). The details are subject to change without notice. Sika accepts no liability for the end use of the details. For conditions not shown, consult Sika for review of specific details.

- Install Sika materials in accordance with current installation instructions.
- Unsatisfactory conditions shall be reported to the General Contractor and corrected before the application of Sika products.

FinePanel Secondary Weather Barrier Design

TYPICAL HORIZONTAL PANEL TO PANEL JOINT



- Edge wrap LaHabra air/water-resistive barrier on to the stud using SikaWall Sheathing Fabric. If punched studs are used, ensure the punchout is treated with SikaWall Flash Seal NP.
- Edge wrap LaHabra base coat and reinforcing mesh on to the stud.
- Do not apply finish in to joint that will receive sealant.
- Install backer rod and sealant at panel to panel connection ensuring a watertight seal is achieved (width per design).
- Reference *Acceptable Sealants for use with LaHabra Wall Systems* Technical Bulletin for a list of sealants.

02 0524

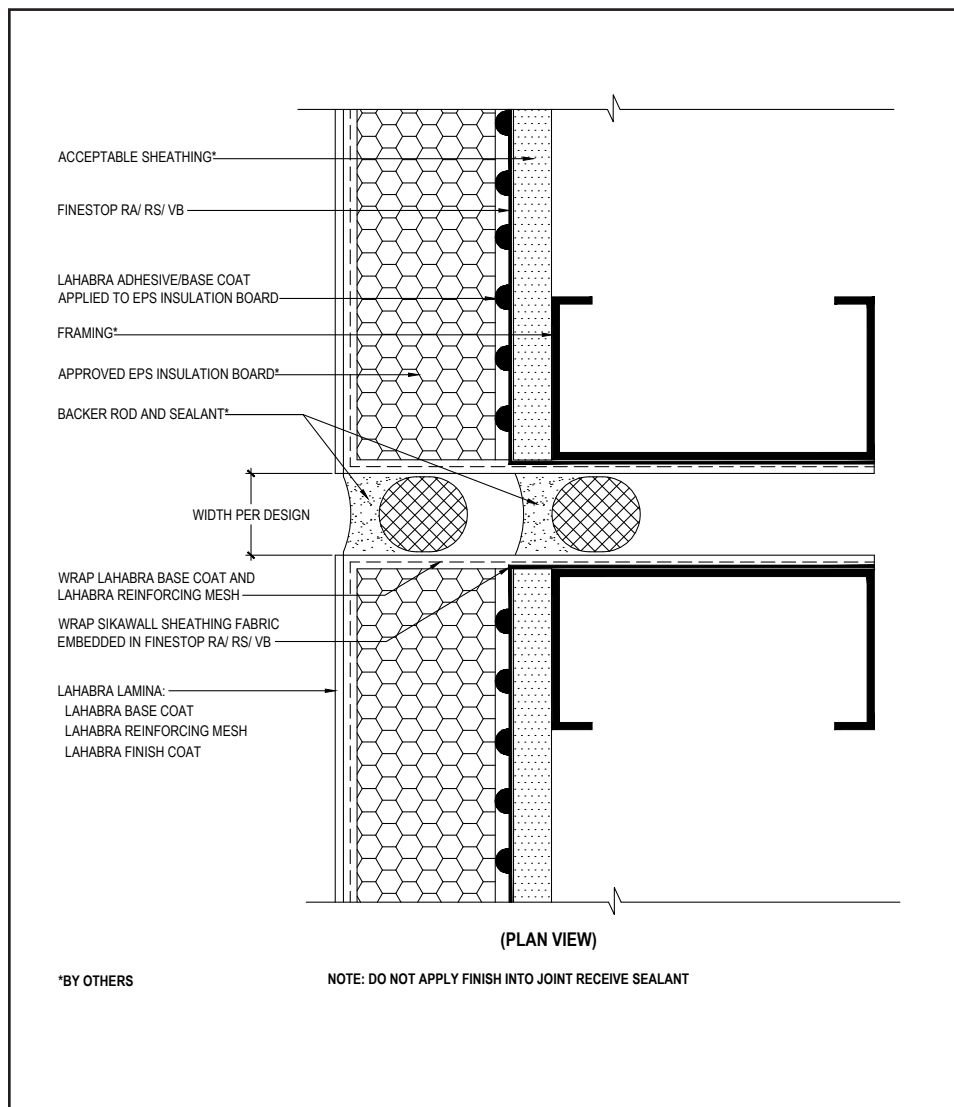
(*NOTE: BY OTHERS)

The details within are the latest recommendations and are represented in good faith by Sika Corporation US (hereinafter Sika). The details are subject to change without notice. Sika accepts no liability for the end use of the details. For conditions not shown, consult Sika for review of specific details.

- Install Sika materials in accordance with current installation instructions.
- Unsatisfactory conditions shall be reported to the General Contractor and corrected before the application of Sika products.

FinePanel Secondary Weather Barrier Design

TYPICAL VERTICAL PANEL TO PANEL JOINT



- Edge wrap LaHabra air/water-resistive barrier on to the stud using SikaWall Sheathing Fabric. If punched studs are used, ensure the punchout is treated with SikaWall Flash Seal NP.
- Edge wrap LaHabra base coat and reinforcing mesh on to the stud.
- Do not apply finish in to joint that will receive sealant.
- Install backer rod and sealant at panel to panel connection ensuring a watertight seal is achieved (width per design).
- Reference *Acceptable Sealants for use with LaHabra Wall Systems* Technical Bulletin for a list of sealants.

03 0524

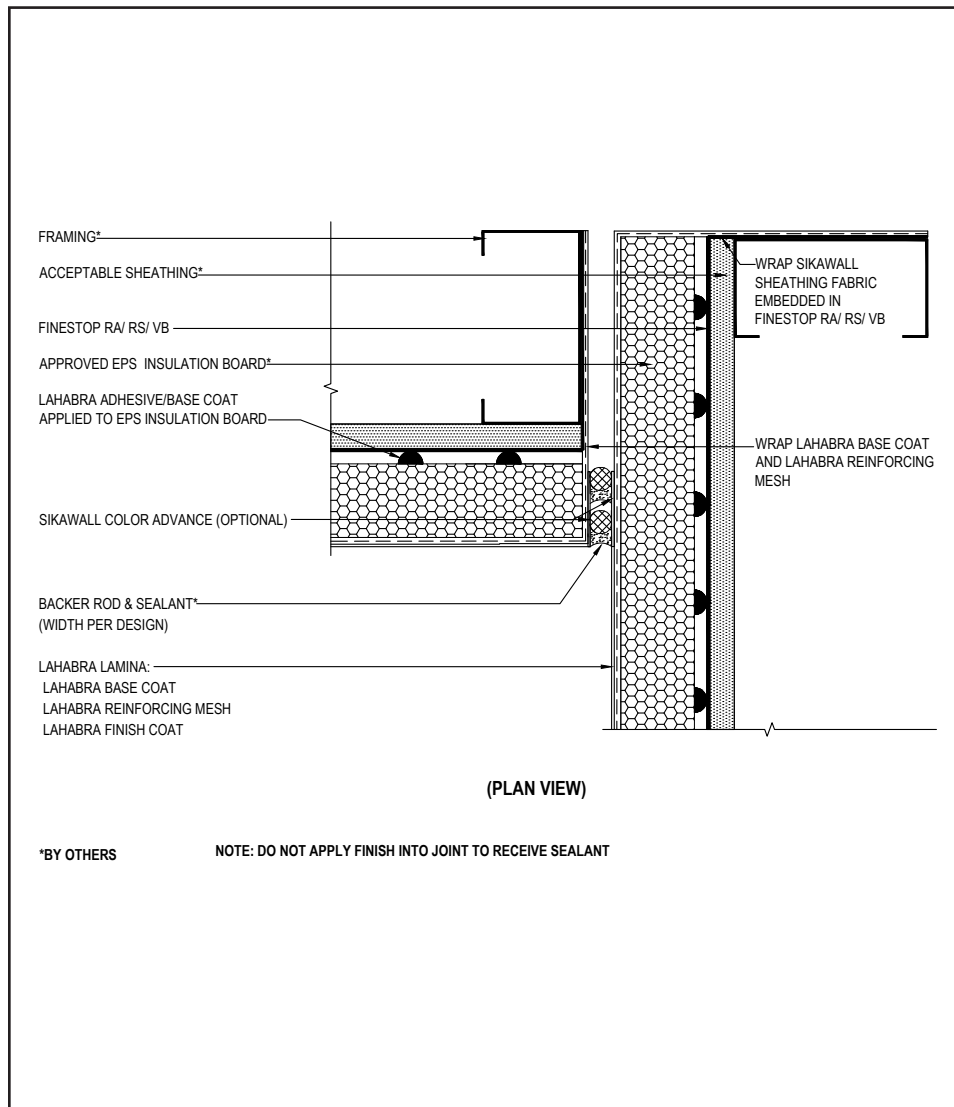
(*NOTE: BY OTHERS)

The details within are the latest recommendations and are represented in good faith by Sika Corporation US (hereinafter Sika). The details are subject to change without notice. Sika accepts no liability for the end use of the details. For conditions not shown, consult Sika for review of specific details.

- Install Sika materials in accordance with current installation instructions.
- Unsatisfactory conditions shall be reported to the General Contractor and corrected before the application of Sika products.

FinePanel Secondary Weather Barrier Design

TYPICAL INSIDE CORNER



- Edge wrap LaHabra air/water-resistant barrier on to the stud using SikaWall Sheathing Fabric.
- Edge wrap LaHabra base coat and reinforcing mesh on to the stud.
- Do not apply finish in to joint that will receive sealant.
- Install backer rod and sealant at panel to panel connection ensuring a watertight seal is achieved (width per design).
- Reference *Acceptable Sealants for use with LaHabra Wall Systems* Technical Bulletin for a list of sealants.

04 0524

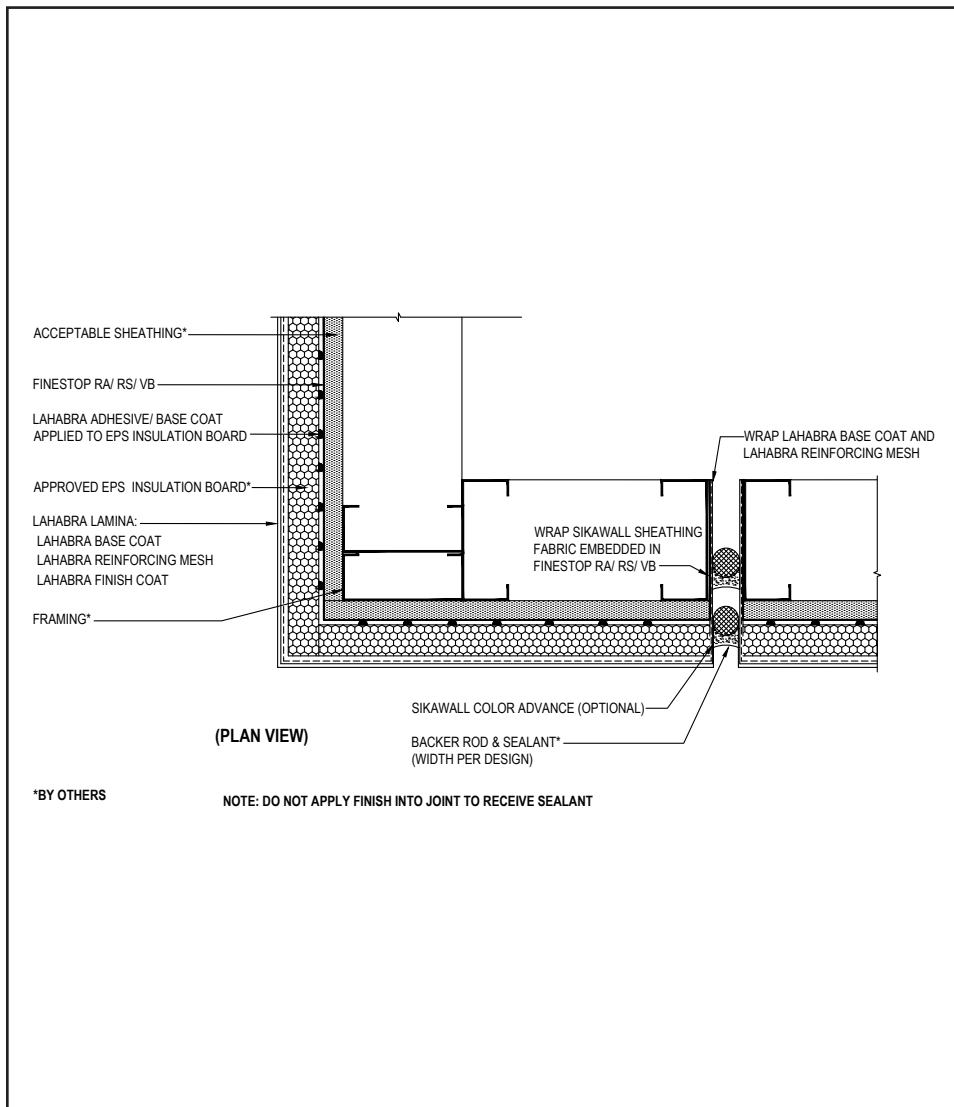
(*NOTE: BY OTHERS)

The details within are the latest recommendations and are represented in good faith by Sika Corporation US (hereinafter Sika). The details are subject to change without notice. Sika accepts no liability for the end use of the details. For conditions not shown, consult Sika for review of specific details.

- Install Sika materials in accordance with current installation instructions.
- Unsatisfactory conditions shall be reported to the General Contractor and corrected before the application of Sika products.

FinePanel Secondary Weather Barrier Design

TYPICAL OUTSIDE CORNER



- Ensure SikaWall Corner Mesh is used or LaHabra Standard, SikaWall Intermediate 6 or 12 reinforcing mesh is lapped a minimum of 8" (203mm) around corners from both sides (creating double layer of mesh at corners).
- Edge wrap LaHabra air/water-resistant barrier on to the stud using SikaWall Sheathing Fabric.
- Edge wrap LaHabra base coat and reinforcing mesh on to the stud.
- Do not apply finish in to joint that will receive sealant.
- Install backer rod and sealant at panel to panel connection ensuring a watertight seal is achieved (width per design).
- Reference *Acceptable Sealants for use with LaHabra Wall Systems* Technical Bulletin for a list of sealants.

05 0524

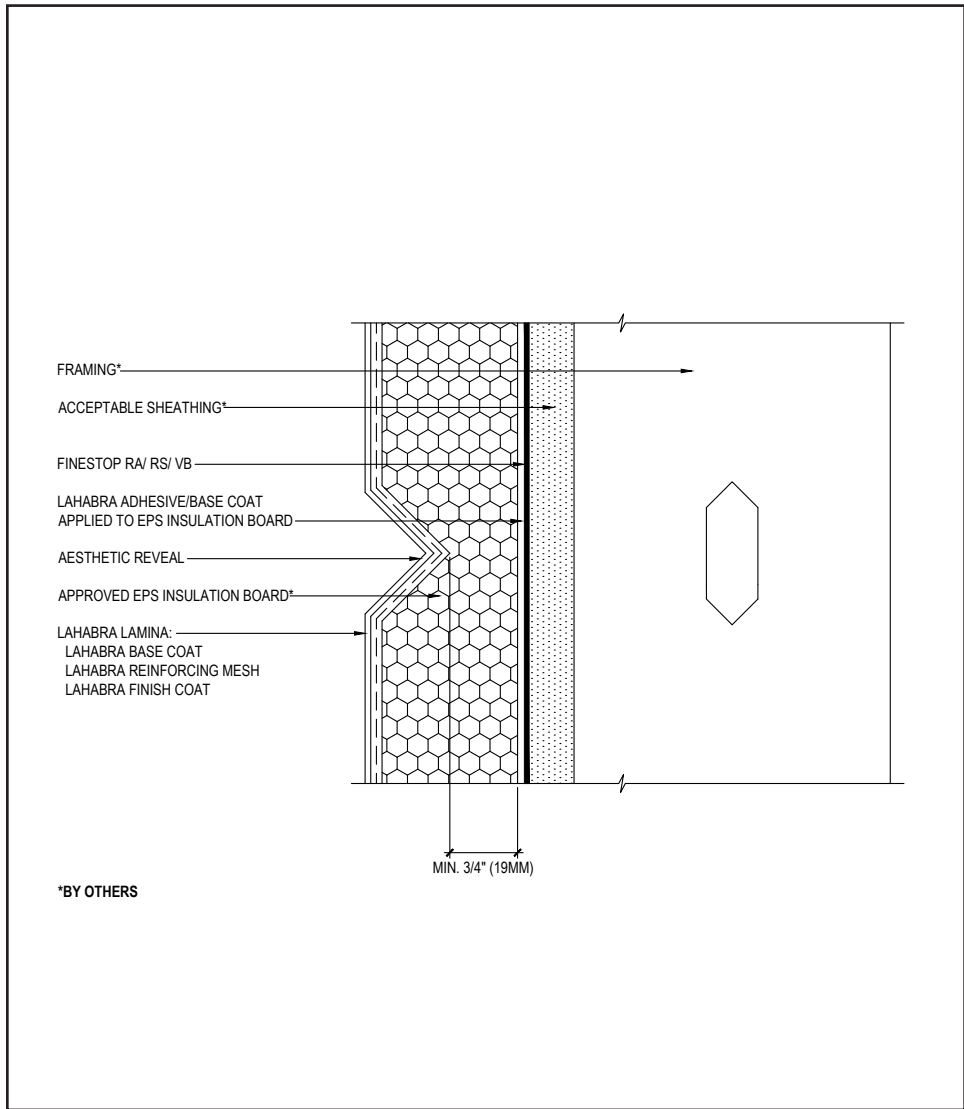
(*NOTE: BY OTHERS)

The details within are the latest recommendations and are represented in good faith by Sika Corporation US (hereinafter Sika). The details are subject to change without notice. Sika accepts no liability for the end use of the details. For conditions not shown, consult Sika for review of specific details.

- Install Sika materials in accordance with current installation instructions.
- Unsatisfactory conditions shall be reported to the General Contractor and corrected before the application of Sika products.

FinePanel Secondary Weather Barrier Design

TYPICAL AESTHETIC REVEAL



- Maintain a minimum continuous ¾" (19mm) thick EPS insulation board behind all reveals and aesthetic groves.
- Reveals shall not occur at the abutment of two pieces of EPS insulation board.
- Reinforcing mesh shall be continuous and care shall be taken to ensure reinforcing mesh is not cut during base coat application.
- Horizontal reveals shall provide for outward positive drainage.

*BY OTHERS

(*NOTE: BY OTHERS)

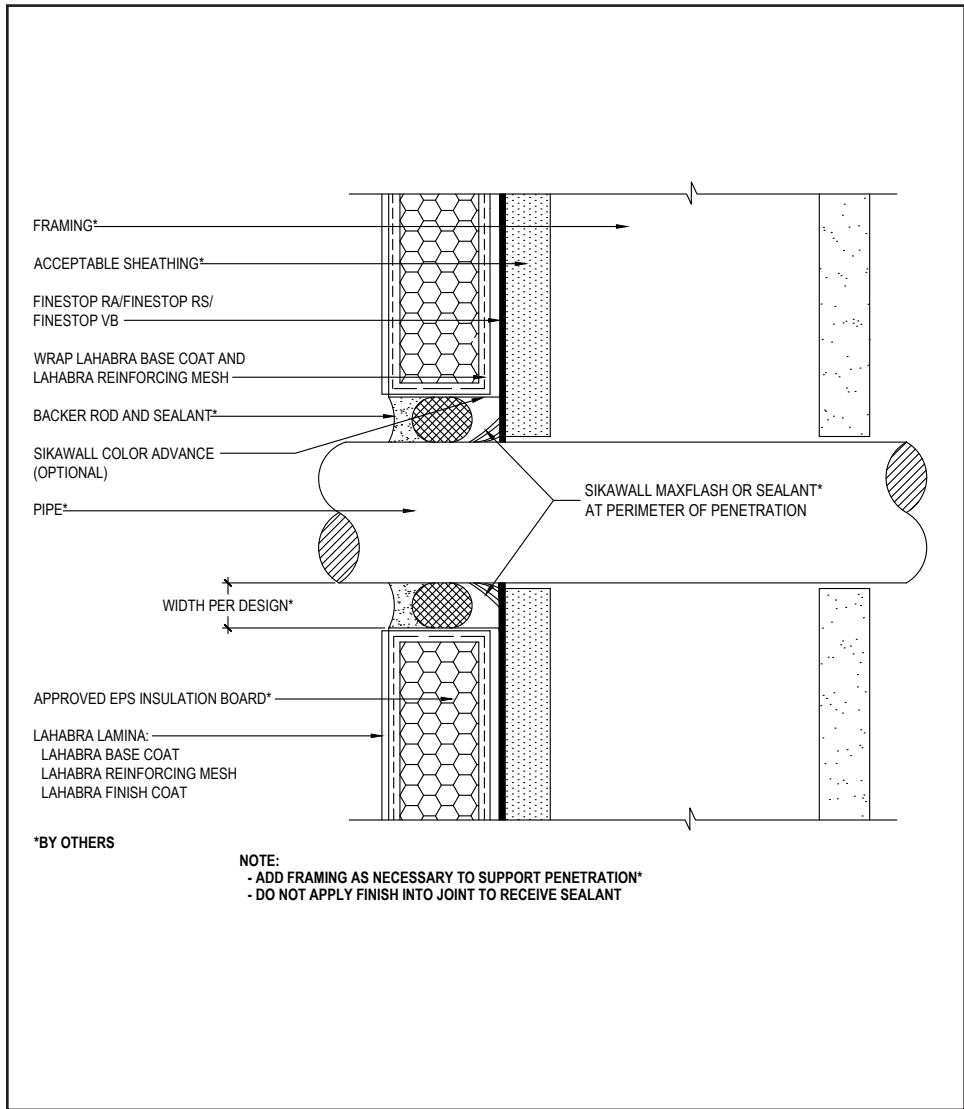
06 0524

The details within are the latest recommendations and are represented in good faith by Sika Corporation US (hereinafter Sika). The details are subject to change without notice. Sika accepts no liability for the end use of the details. For conditions not shown, consult Sika for review of specific details.

- Install Sika materials in accordance with current installation instructions.
- Unsatisfactory conditions shall be reported to the General Contractor and corrected before the application of Sika products.

FinePanel Secondary Weather Barrier Design

TYPICAL PIPE PENETRATION



- All terminations must be encapsulated with mesh reinforced base coat.
- Provide a continuous air seal around perimeter of penetration prior to EPS insulation board application.
- Ensure all penetrations into the system are properly sealed. Reference *Acceptable Sealants for use with LaHabra Wall Systems* Technical Bulletin for a list of sealants.
- Do not apply finish in to joint that will receive sealant.

07 0524

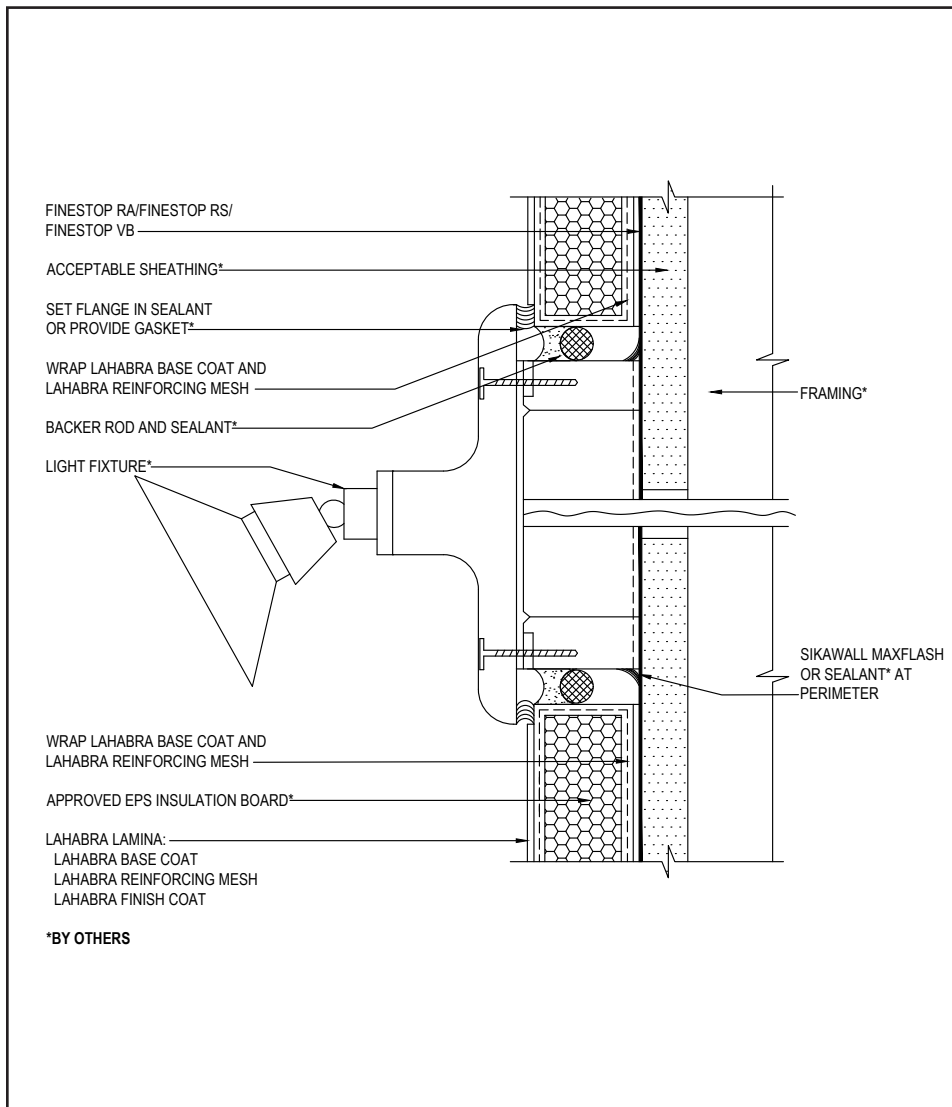
(*NOTE: BY OTHERS)

The details within are the latest recommendations and are represented in good faith by Sika Corporation US (hereinafter Sika). The details are subject to change without notice. Sika accepts no liability for the end use of the details. For conditions not shown, consult Sika for review of specific details.

- Install Sika materials in accordance with current installation instructions.
- Unsatisfactory conditions shall be reported to the General Contractor and corrected before the application of Sika products.

FinePanel Secondary Weather Barrier Design

TYPICAL LIGHT FIXTURE



- All terminations must be encapsulated with mesh reinforced base coat.
- Provide a continuous air seal around perimeter of penetration prior to EPS insulation board application.
- Ensure all penetrations into the system are properly sealed. Reference *Acceptable Sealants for use with LaHabra Wall Systems* Technical Bulletin for a list of sealants.
- Do not apply finish in to joint that will receive sealant.

08 0524

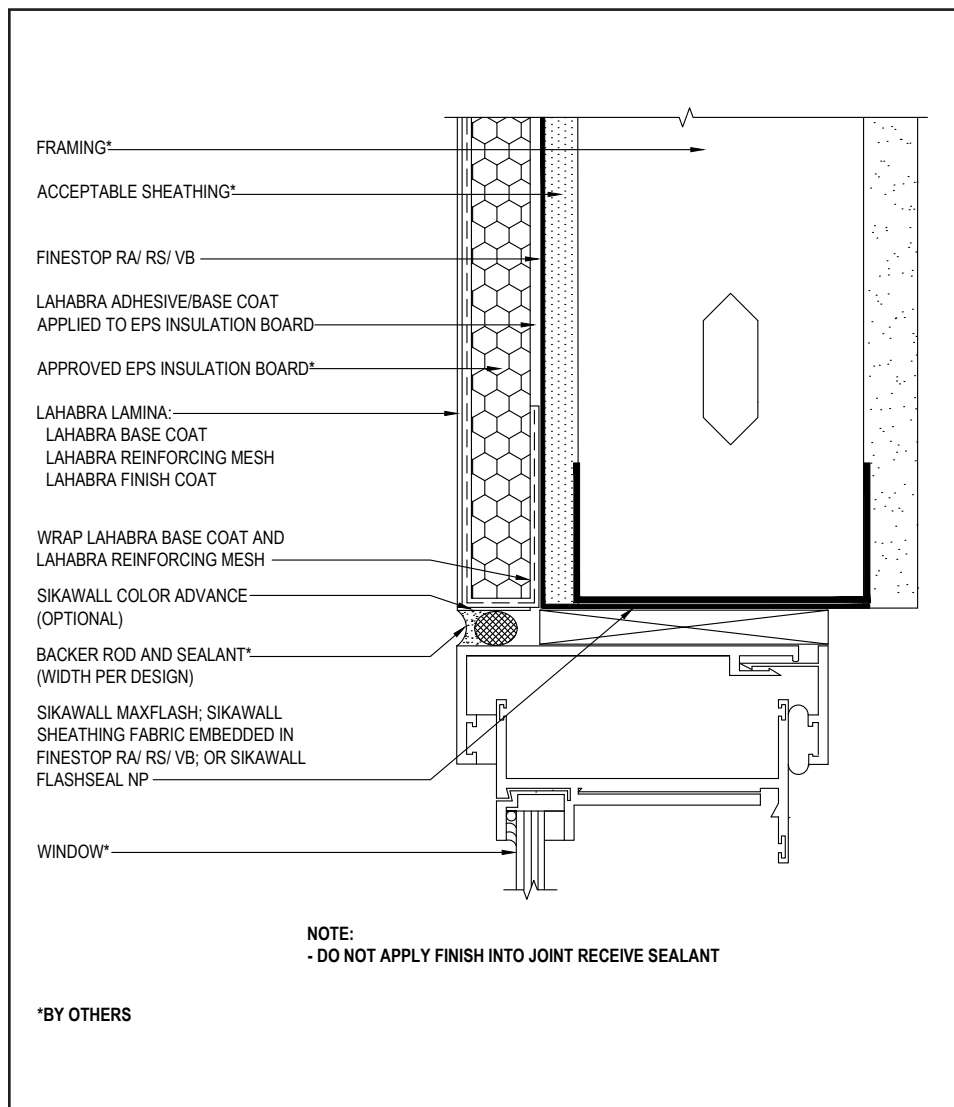
(*NOTE: BY OTHERS)

The details within are the latest recommendations and are represented in good faith by Sika Corporation US (hereinafter Sika). The details are subject to change without notice. Sika accepts no liability for the end use of the details. For conditions not shown, consult Sika for review of specific details.

- Install Sika materials in accordance with current installation instructions.
- Unsatisfactory conditions shall be reported to the General Contractor and corrected before the application of Sika products.

FinePanel Secondary Weather Barrier Design

TYPICAL WINDOW HEAD (FLUSH)



- Prior to window and EPS installation, ensure water-resistive barrier is properly applied into the rough openings in accordance with LaHabra application guidelines and code requirements. Reference LaHabra Finestop RA/RS/VB published typical details.
- Edge wrap LaHabra base coat and reinforcing mesh on to the stud or extend reinforcing mesh a minimum of 2 1/2" onto back of insulation board.
- Do not apply finish in to joint that will receive sealant.
- Provide a back wrapped or edge wrapped type joint with backer rod and sealant at system terminations to dissimilar materials, ensuring that a watertight seal is achieved (width per design).
- Reference *Acceptable Sealants for use with LaHabra Wall Systems* Technical Bulletin for a list of sealants.
- Consult window and sealant manufacturers to verify window installation, detailing and to ensure no water leakage into the wall assembly.

09 0524

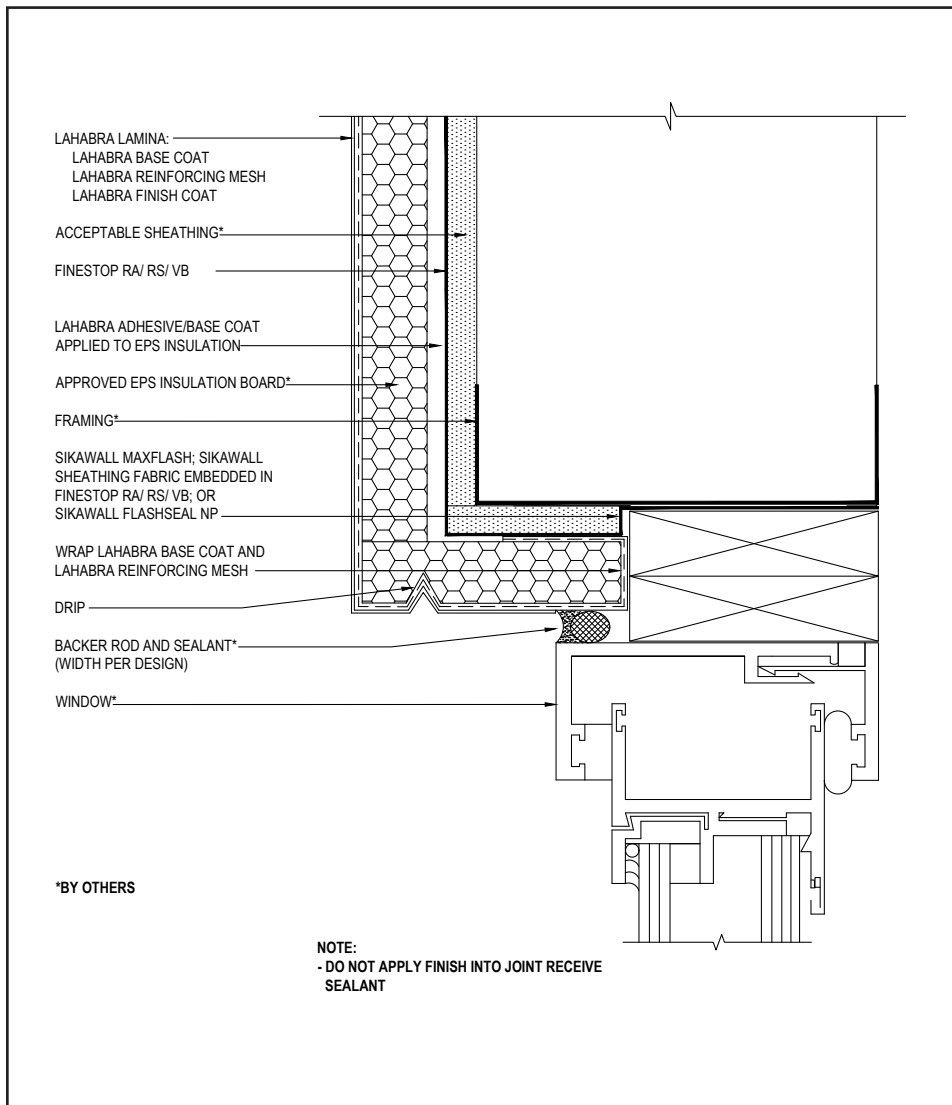
(*NOTE: BY OTHERS)

The details within are the latest recommendations and are represented in good faith by Sika Corporation US (hereinafter Sika). The details are subject to change without notice. Sika accepts no liability for the end use of the details. For conditions not shown, consult Sika for review of specific details.

- Install Sika materials in accordance with current installation instructions.
- Unsatisfactory conditions shall be reported to the General Contractor and corrected before the application of Sika products.

FinePanel Secondary Weather Barrier Design

TYPICAL WINDOW HEAD (RECESSED)



- Prior to window and EPS installation, ensure water-resistive barrier is properly applied into the rough openings in accordance with LaHabra application guidelines and code requirements. Reference LaHabra Finestop RA/RS/VB published typical details.
- All terminations must be fully encapsulated with mesh reinforced base coat. Edge wrap onto track or extend reinforcing mesh a minimum of 2 1/2" onto back of insulation board.
- Do not apply finish in to joint that will receive sealant.
- Provide a back wrapped type joint with backer rod and sealant at system terminations to dissimilar materials, ensuring that a watertight seal is achieved (width per design).
- Reference *Acceptable Sealants for use with LaHabra Wall Systems* Technical Bulletin for a list of sealants.
- Consult window and sealant manufacturers to verify window installation, detailing and to ensure no water leakage into the wall assembly.

10 0524

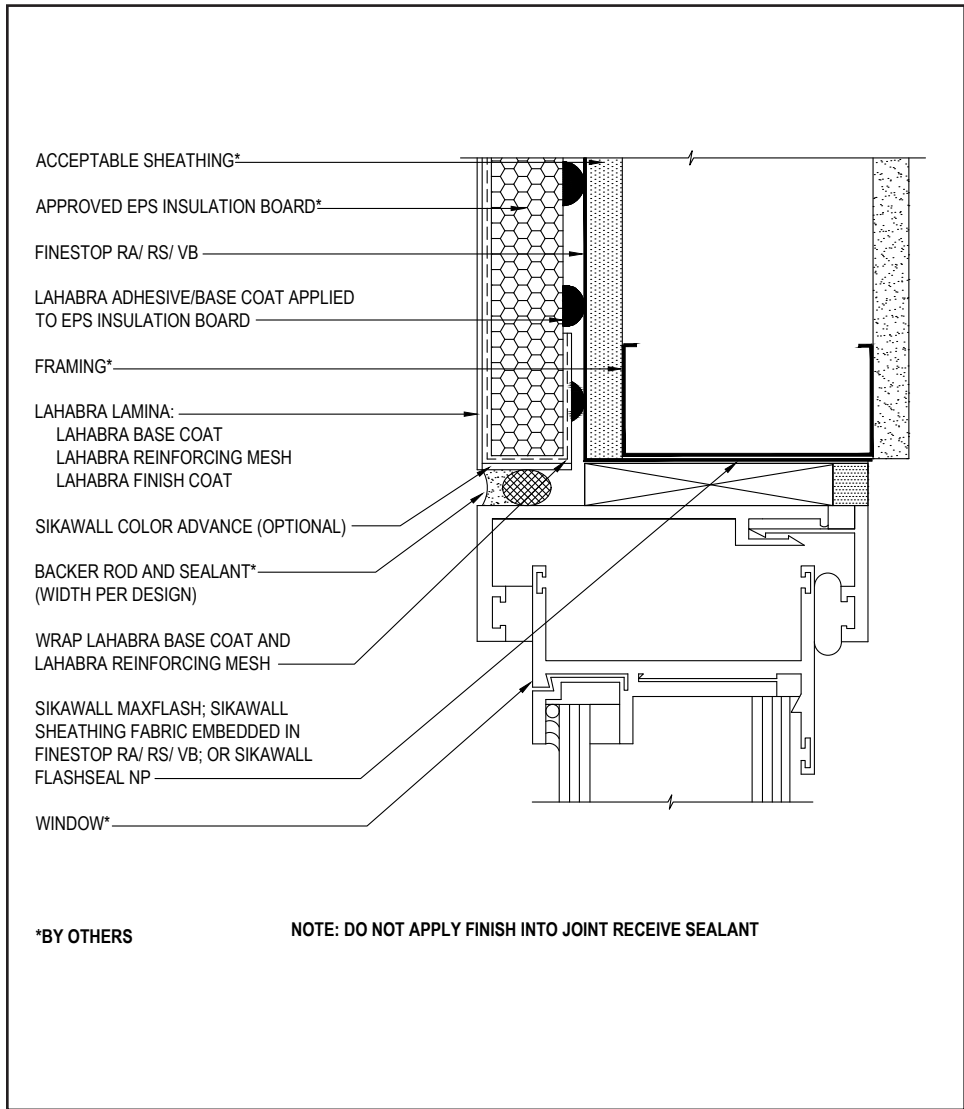
(*NOTE: BY OTHERS)

The details within are the latest recommendations and are represented in good faith by Sika Corporation US (hereinafter Sika). The details are subject to change without notice. Sika accepts no liability for the end use of the details. For conditions not shown, consult Sika for review of specific details.

- Install Sika materials in accordance with current installation instructions.
- Unsatisfactory conditions shall be reported to the General Contractor and corrected before the application of Sika products.

FinePanel Secondary Weather Barrier Design

TYPICAL WINDOW JAMB (FLUSH)



- Prior to window and EPS installation, ensure water-resistive barrier is properly applied into the rough openings in accordance with LaHabra application guidelines and code requirements. Reference LaHabra Finestop RA/RS/ VB published typical details. If punched studs are used, ensure the punchout is treated with SikaWall Flash Seal NP.
- All terminations must be fully encapsulated with mesh reinforced base coat. Edge wrap onto stud or extend reinforcing mesh a minimum of 2 1/2" onto back of insulation board.
- Provide a back wrapped or edge wrapped type joint with backer rod and sealant at system terminations to dissimilar materials, ensuring that a watertight seal is achieved (width per design).
- Reference *Acceptable Sealants for use with LaHabra Wall Systems* Technical Bulletin for a list of sealants.
- Consult window and sealant manufacturers to verify window installation, detailing and to ensure no water leakage into the wall assembly.

11 0524

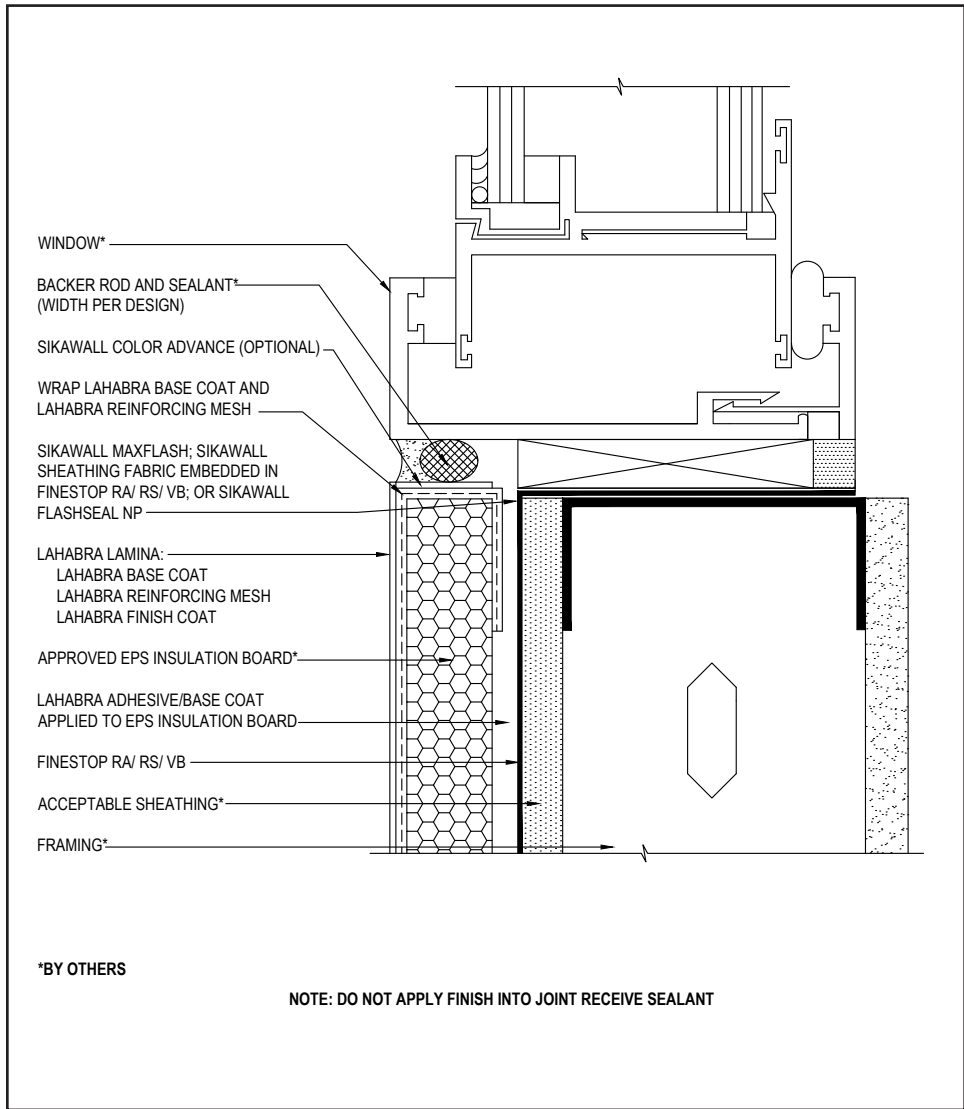
(*NOTE: BY OTHERS)

The details within are the latest recommendations and are represented in good faith by Sika Corporation US (hereinafter Sika). The details are subject to change without notice. Sika accepts no liability for the end use of the details. For conditions not shown, consult Sika for review of specific details.

- Install Sika materials in accordance with current installation instructions.
- Unsatisfactory conditions shall be reported to the General Contractor and corrected before the application of Sika products.

FinePanel Secondary Weather Barrier Design

TYPICAL WINDOW SILL (FLUSH)



- Prior to window and EPS installation, ensure water-resistive barrier is properly applied into the rough openings in accordance with LaHabra application guidelines and code requirements. Reference LaHabra Finestop RA/RS/VB published typical details.
- All terminations must be fully encapsulated with mesh reinforced base coat. Edge wrap onto track or extend reinforcing mesh a minimum of 2 1/2" onto back of insulation board.
- Do not apply finish in to joint that will receive sealant.
- Provide a back wrapped or edge wrapped type joint with backer rod and sealant at system terminations to dissimilar materials, ensuring that a watertight seal is achieved (width per design).
- Reference *Acceptable Sealants for use with LaHabra Wall Systems* Technical Bulletin for a list of sealants.
- Consult window and sealant manufacturers to verify window installation, detailing and to ensure no water leakage into the wall assembly.

12 0524

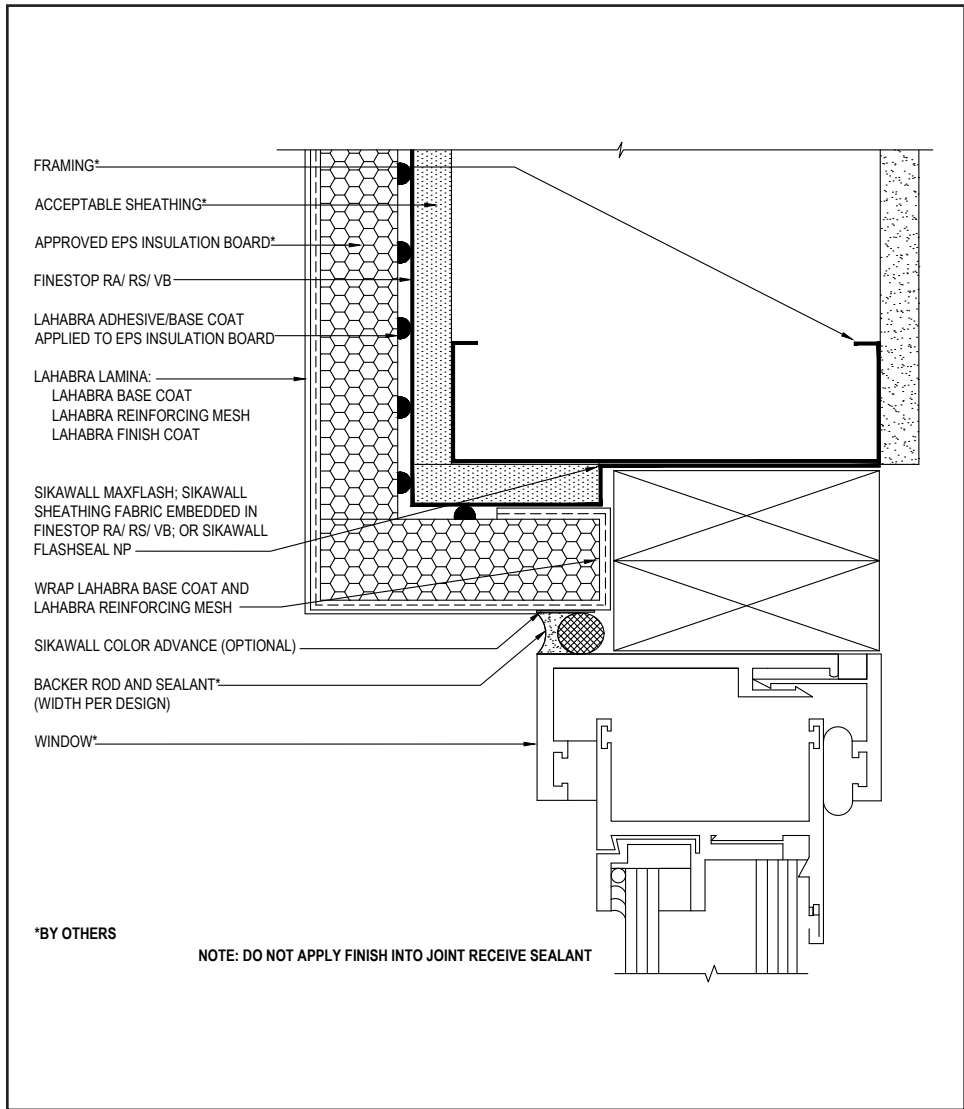
(*NOTE: BY OTHERS)

The details within are the latest recommendations and are represented in good faith by Sika Corporation US (hereinafter Sika). The details are subject to change without notice. Sika accepts no liability for the end use of the details. For conditions not shown, consult Sika for review of specific details.

- Install Sika materials in accordance with current installation instructions.
- Unsatisfactory conditions shall be reported to the General Contractor and corrected before the application of Sika products.

FinePanel Secondary Weather Barrier Design

TYPICAL WINDOW JAMB (RECESSED)



- Prior to window and EPS installation, ensure water-resistive barrier is properly applied into the rough openings in accordance with LaHabra application guidelines and code requirements. Reference LaHabra Finstop RA/RS/VB published typical details. If punched studs are used, ensure the punchout is treated with SikaWall Flash Seal NP.
- All terminations must be fully encapsulated with mesh reinforced base coat. Edge wrap onto stud or extend reinforcing mesh a minimum of 2 1/2" onto back of insulation board
- Do not apply finish in to joint that will receive sealant.
- Provide a back wrapped or edge wrapped type joint with backer rod and sealant at system terminations to dissimilar materials, ensuring that a watertight seal is achieved (width per design).
- Reference *Acceptable Sealants for use with LaHabra Wall Systems* Technical Bulletin for a list of sealants.
- Consult window and sealant manufacturers to verify window installation, detailing and to ensure no water leakage into the wall assembly.

13 0524

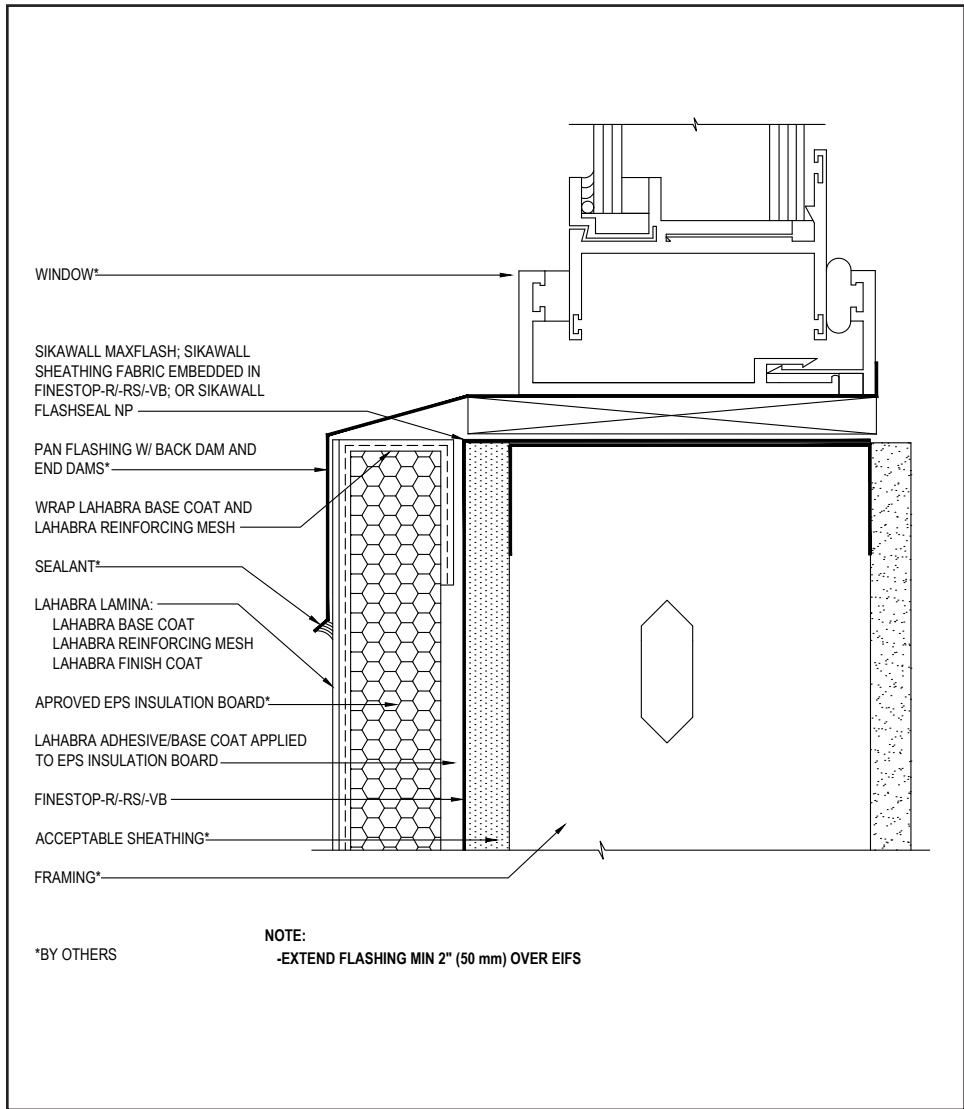
(*NOTE: BY OTHERS)

The details within are the latest recommendations and are represented in good faith by Sika Corporation US (hereinafter Sika). The details are subject to change without notice. Sika accepts no liability for the end use of the details. For conditions not shown, consult Sika for review of specific details.

- Install Sika materials in accordance with current installation instructions.
- Unsatisfactory conditions shall be reported to the General Contractor and corrected before the application of Sika products.

FinePanel Secondary Weather Barrier Design

TYPICAL WINDOW SILL (RECESSED)



- Prior to window and EPS installation, ensure water-resistive barrier is properly applied into the rough openings in accordance with LaHabra application guidelines and code requirements. Reference LaHabra Finestop RA/RS/VB published typical details.
- All terminations must be fully encapsulated with mesh reinforced base coat. Edge wrap onto track or extend reinforcing mesh a minimum of 2 1/2" onto back of insulation board.
- Metal pan flashing shall extend over the system a minimum of 2" (50 mm) down the face. Pan flashing shall include back and end dams. End dams shall be treated with LaHabra A/WRB products at interface with jamb framing.
- Reference *Acceptable Sealants for use with LaHabra Wall Systems* Technical Bulletin for a list of sealants.
- Consult window and sealant manufacturers to verify window installation, detailing and to ensure no water leakage into the wall assembly.

14 0524

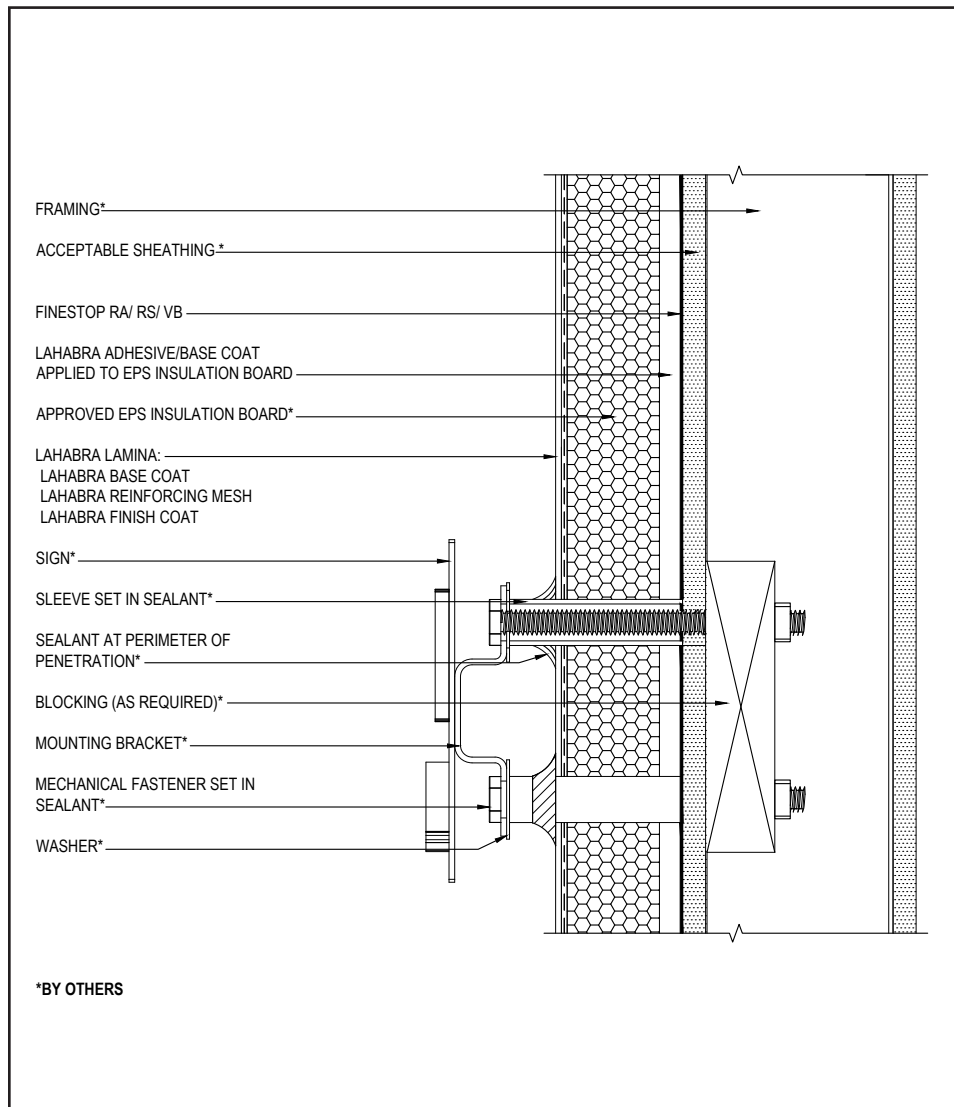
(*NOTE: BY OTHERS)

The details within are the latest recommendations and are represented in good faith by Sika Corporation US (hereinafter Sika). The details are subject to change without notice. Sika accepts no liability for the end use of the details. For conditions not shown, consult Sika for review of specific details.

- Install Sika materials in accordance with current installation instructions.
- Unsatisfactory conditions shall be reported to the General Contractor and corrected before the application of Sika products.

FinePanel Secondary Weather Barrier Design

TYPICAL SIGN ATTACHMENT



- Ensure all penetrations into the system are properly sealed. Reference *Acceptable Sealants for use with LaHabra Wall Systems* Technical Bulletin for a list of sealants.
- Blocking or other structural support required for sign attachment.

*BY OTHERS

15 0524

(*NOTE: BY OTHERS)

The details within are the latest recommendations and are represented in good faith by Sika Corporation US (hereinafter Sika). The details are subject to change without notice. Sika accepts no liability for the end use of the details. For conditions not shown, consult Sika for review of specific details.

- Install Sika materials in accordance with current installation instructions.
- Unsatisfactory conditions shall be reported to the General Contractor and corrected before the application of Sika products.

LIMITED WARRANTY NOTICE

Prior to each use of any product of Sika Corporation, its subsidiaries or affiliates ("SIKA"), the user must always read and follow the warnings and instructions on the product's most current product label, Product Data Sheet and Safety Data Sheet which are available at usa.sika.com/lahabra or by calling our Technical Service Department at +1 (800) 589-1336.

Nothing contained in any SIKA literature or materials relieves the user of the obligation to read and follow the warnings and instructions for each SIKA product as set forth in the current product label, Product Data Sheet and Safety Data Sheet prior to use of the SIKA product.

SIKA warrants this product for one year from date of installation to be free from manufacturing defects and to meet the technical properties on the current Product Data Sheet if used as directed within the product's shelf life. User determines suitability of product for intended use and assumes all risks. User's and/or buyer's sole remedy shall be limited to the purchase price or replacement of this product exclusive of any labor costs. NO OTHER WARRANTIES EXPRESS OR IMPLIED SHALL APPLY INCLUDING ANY WARRANTY OF MERCHANTABILITY OR FITNESS FOR A PARTICULAR PURPOSE. SIKA SHALL NOT BE LIABLE UNDER ANY LEGAL THEORY FOR SPECIAL OR CONSEQUENTIAL DAMAGES. SIKA SHALL NOT BE RESPONSIBLE FOR THE USE OF THIS PRODUCT IN A MANNER TO INFRINGE ON ANY PATENT OR ANY OTHER INTELLECTUAL PROPERTY RIGHTS HELD BY OTHERS. Sale of SIKA products are subject to the Terms and Conditions of Sale which are available at usa.sika.com.

For the most current version of this literature, please visit our website at usa.sika.com/lahabra.

Sika Corporation

201 Polito Avenue
Lyndhurst, NJ 07071 USA
Customer Service +1 (800) 433-9517
Technical Service +1 (800) 589-1336
usa.sika.com/lahabra

Rev May 2024

BUILDING TRUST

