

Senergy[®]



Sentry Stucco Wall System

Cement Plaster Stucco

Typical Details

BUILDING TRUST



Sentry Stucco Wall System

Typical Details

Table of Contents

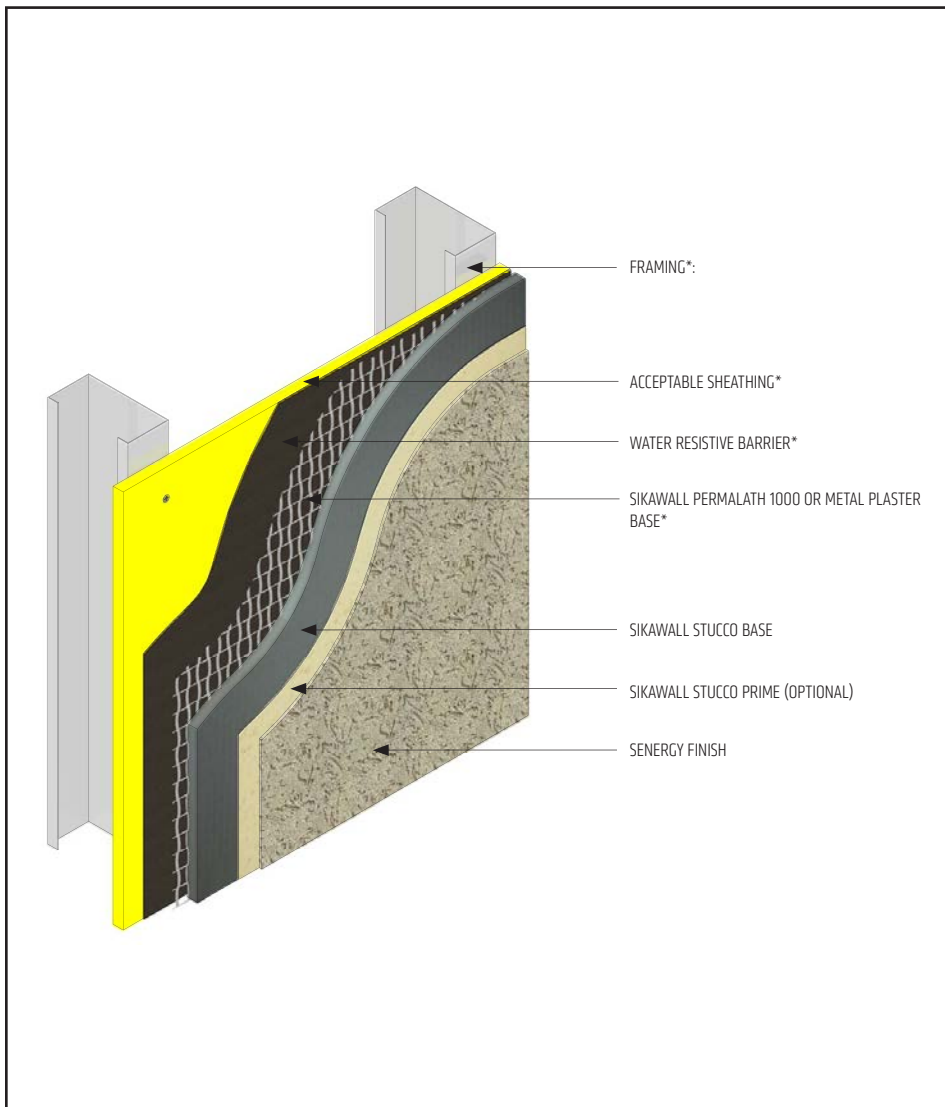
- | | |
|--|---------------------------------------|
| 1. Sentry Stucco Wall System with Steel Framing | 13. Primed Window Sill |
| 2. Sentry Stucco Wall System with Wood Framing | 14. EPS Shape Application |
| 3. Sentry Stucco Wall System with CMU | 15. Termination at Soffit / Gable End |
| 4. Sentry Stucco Wall System with CMU and Plaster Base | 16. Termination at Foundation |
| 5. Surface Control Joint | 17. Kick-out Flashing |
| 6. Expansion Joint | 18. Termination at Deck |
| 7. Drainage at Floorline | 19. Coping |
| 8. Clad Window Jamb | 20. Corner Bead |
| 9. Clad Window Head | 21. Downspout Application |
| 10. Clad Window Sill | 22. Pipe Penetration |
| 11. Primed Window Head | 23. Light Fixture |
| 12. Primed Window Jamb | 24. Dryer Vent |

Notes:

- **The details within are latest recommendations and are represent in good faith by Sika Corporation US (hereinafter Sika). The details are subject to change without notice. Sika accepts no liability for the end use of the details. For conditions not shown, consult Sika for review of specific details.**
- **Install Sika materials in accordance with current installation instructions.**
- **Unsatisfactory conditions shall be reported to the General Contractor and corrected before the application of Sika products.**

Sentry Stucco Wall System

TYPICAL SENTRY STUCCO WALL SYSTEM WITH STEEL FRAMING



SSWS-01 0424

(*NOTE: BY OTHERS)

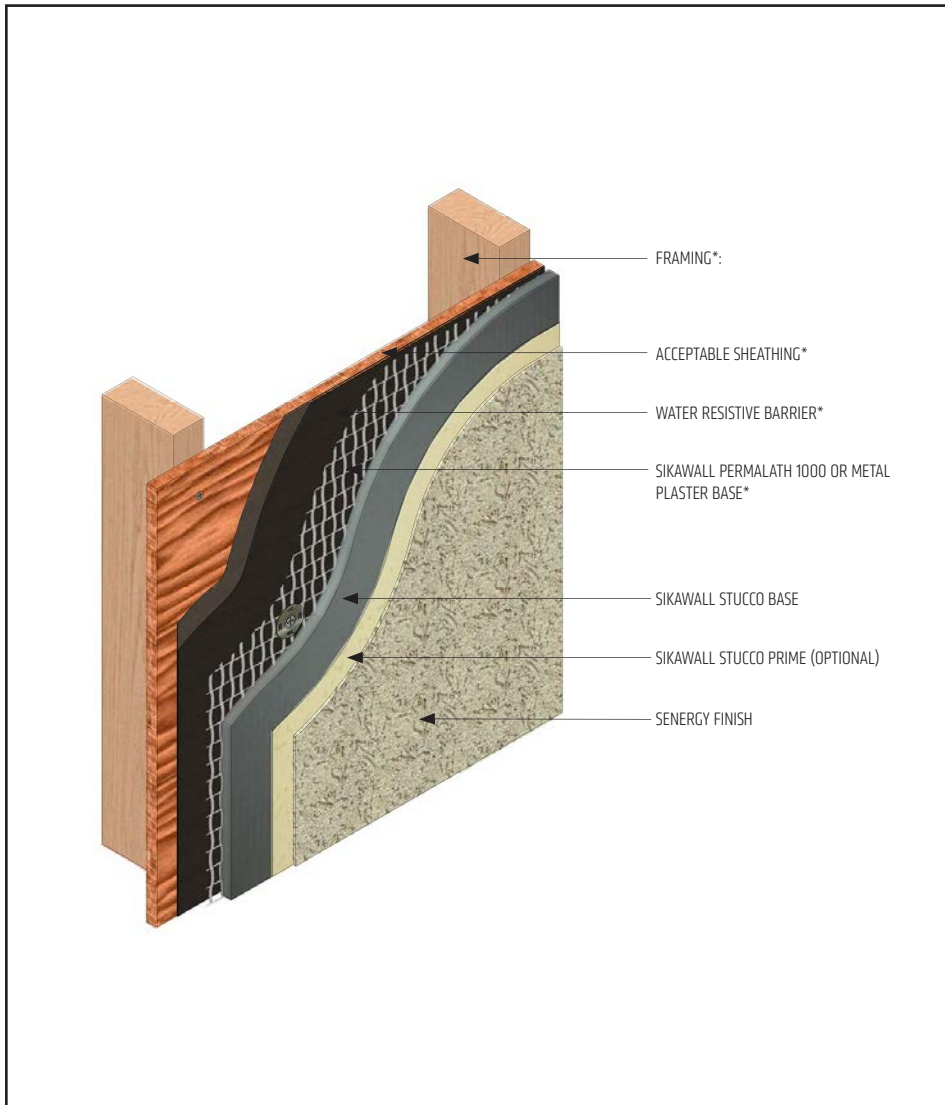
- Basic requirements for water-resistive barrier:
 - One layer minimum No.15 felt on non-wood based sheathing.
 - Two layers minimum Grade D on wood based sheathing.
 - For systems with Senersshield-R/-RS/-VB please see Sentry Stucco Plus and Ultra
 - Comply with applicable local building code.
- Basic requirements for Plaster Base:
 - 3/8" to 1/2" thickness: min. 1" 20 ga. wire, min. 2.5 lb/sq.yd. metal lath or acceptable alternative.
 - Minimum 1/2" to nominal 7/8" thickness: SikaWall PermaLath 1000 or min. 1 1/2" 17 ga. wire, min. 2.5 lb/sq.yd. metal lath or acceptable alternative.

This detail represents Sika Corporation Construction Systems US, LLC (hereinafter Sika Corporation) latest recommendations. It is presented in good faith by Sika Corporation. The detail is subject to change without notice. Sika Corporation accepts no liability for the end use of the detail. For conditions not shown, consult Sika Corporation for review of specific detail.

- Install Sika materials in accordance with current installation instructions.
- Unsatisfactory conditions shall be reported to the General Contractor and corrected before the application of Sika products.

Sentry Stucco Wall System

TYPICAL SENTRY STUCCO WALL SYSTEM WITH WOOD FRAMING



SSWS-02 0424

(*NOTE: BY OTHERS)

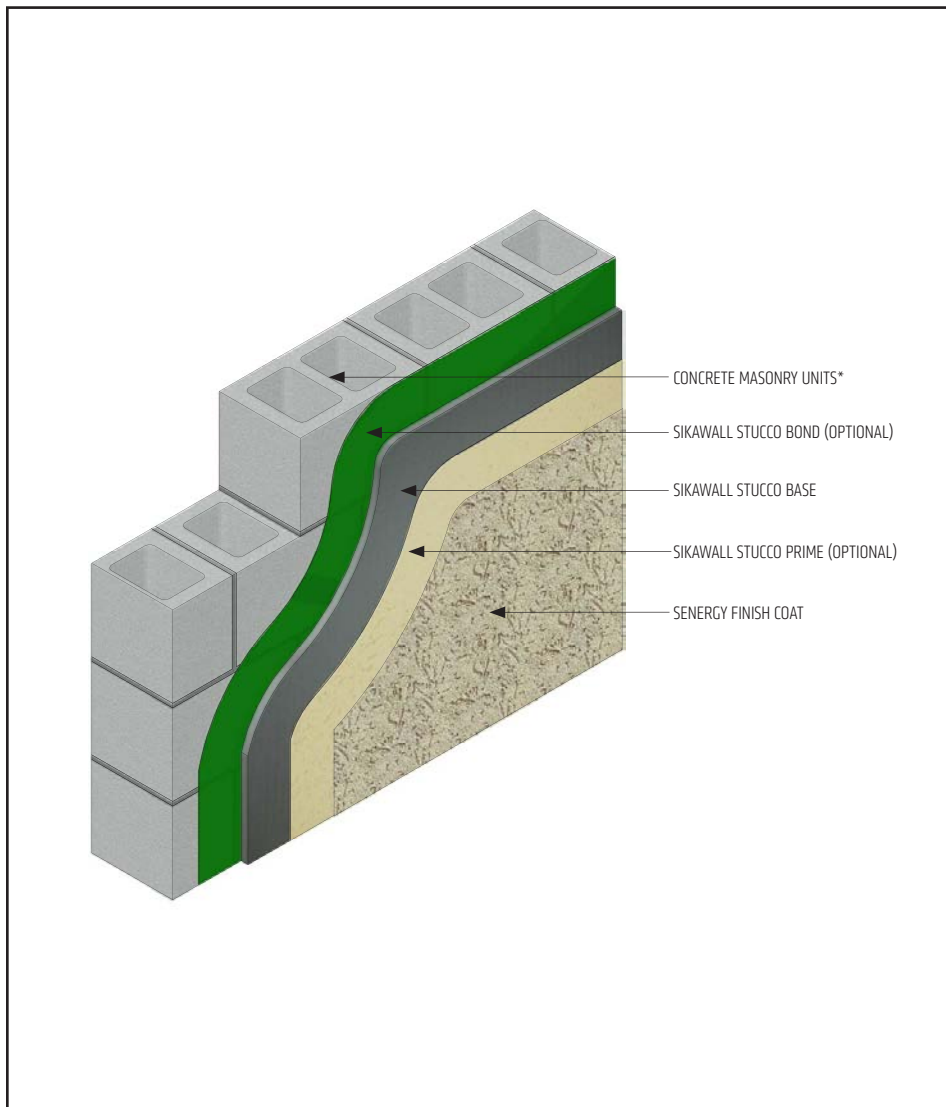
- Basic requirements for water-resistive Barrier:
 - Two layers minimum Grade D on wood based sheathing.
 - One layer minimum No.15 felt on non-wood based sheathing.
 - For systems with Senershield-R/-RS/-VB please see Sentry Stucco Plus and Ultra
 - Comply with applicable local building code.
- Basic requirements for Plaster Base:
 - 3/8" to 1/2" thickness: min. 1" 20 ga. wire, min. 2.5 lb/sq.yd. metal lath or acceptable alternative.
 - Minimum 1/2" to nominal 7/8" thickness: SikaWall PermaLath 1000 or min. 1 1/2" 17 ga. wire, min. 2.5 lb/sq.yd. metal lath or acceptable alternative.

This detail represents Sika Corporation Construction Systems US, LLC (hereinafter Sika Corporation) latest recommendations. It is presented in good faith by Sika Corporation. The detail is subject to change without notice. Sika Corporation accepts no liability for the end use of the detail. For conditions not shown, consult Sika Corporation for review of specific detail.

- Install Sika materials in accordance with current installation instructions.
- Unsatisfactory conditions shall be reported to the General Contractor and corrected before the application of Sika products.

Sentry Stucco Wall System

TYPICAL SENTRY STUCCO WALL SYSTEM WITH CMU OR CONCRETE



- Direct applied stucco minimum 3/8" / maximum 5/8".

SSWS-03 0424

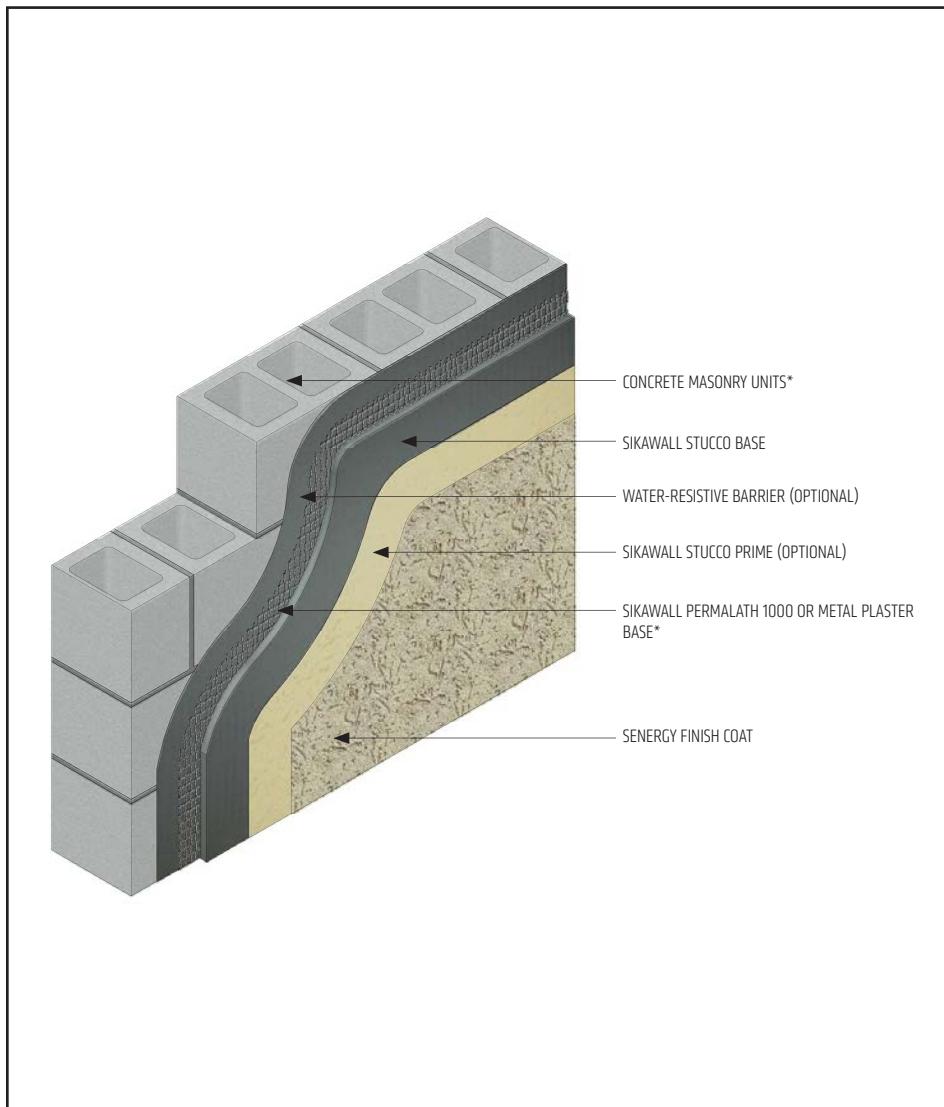
(*NOTE: BY OTHERS)

This detail represents Sika Corporation Construction Systems US, LLC (hereinafter Sika Corporation) latest recommendations. It is presented in good faith by Sika Corporation. The detail is subject to change without notice. Sika Corporation accepts no liability for the end use of the detail. For conditions not shown, consult Sika Corporation for review of specific detail.

- Install Sika materials in accordance with current installation instructions.
- Unsatisfactory conditions shall be reported to the General Contractor and corrected before the application of Sika products.

Sentry Stucco Wall System

TYPICAL SENTRY STUCCO WALL SYSTEM WITH CMU AND PLASTER BASE



- Basic requirements for Plaster Base:
 - 3/8" to 1/2" thickness: min. 1" 20 ga. wire, min. 2.5 lb/sq.yd. metal lath or acceptable alternative.
 - Minimum 1/2" to nominal 7/8" thickness: SikaWall PermaLath 1000 or min. 1 1/2" 17 ga. wire, min. 2.5 lb/sq.yd. metal lath or acceptable alternative.

SSWS-04 0424

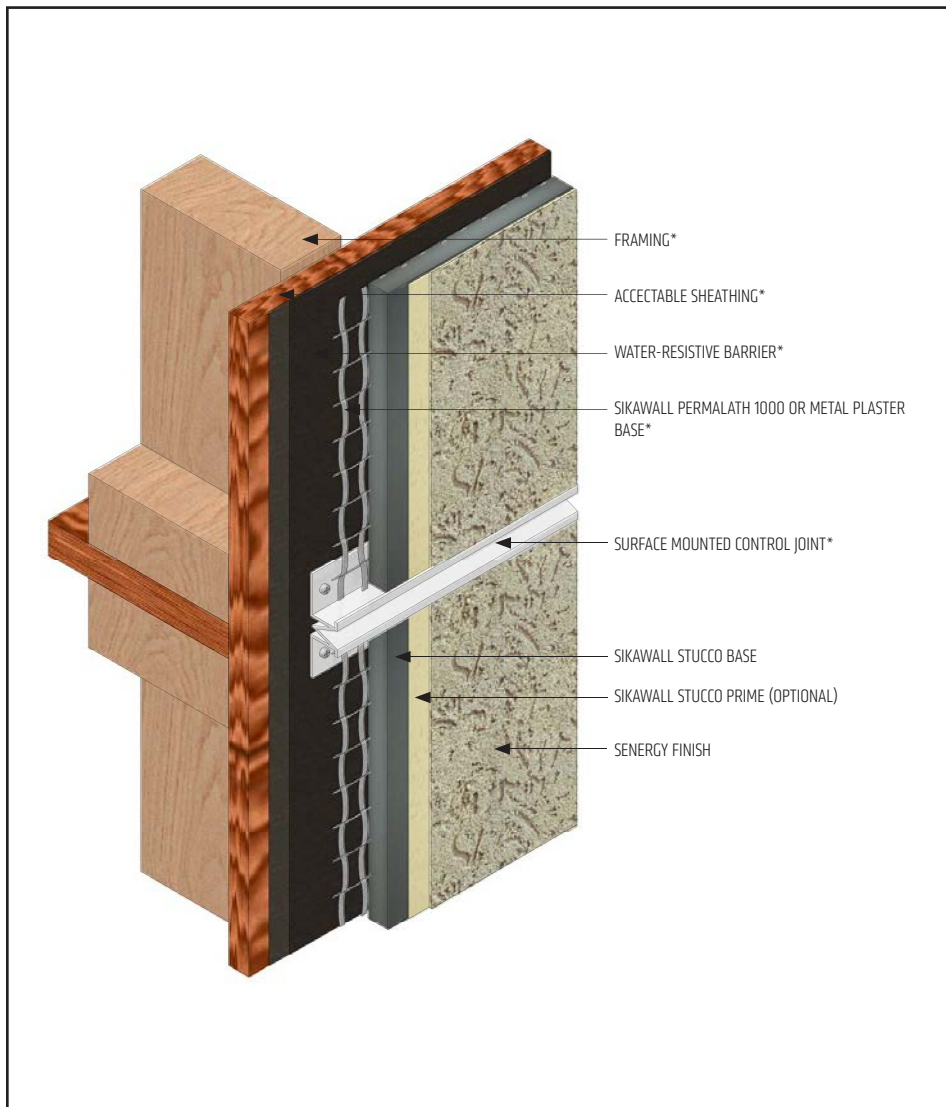
(*NOTE: BY OTHERS)

This detail represents Sika Corporation Construction Systems US, LLC (hereinafter Sika Corporation) latest recommendations. It is presented in good faith by Sika Corporation. The detail is subject to change without notice. Sika Corporation accepts no liability for the end use of the detail. For conditions not shown, consult Sika Corporation for review of specific detail.

- Install Sika materials in accordance with current installation instructions.
- Unsatisfactory conditions shall be reported to the General Contractor and corrected before the application of Sika products.

Sentry Stucco Wall System

TYPICAL SURFACE CONTROL JOINT



- Provide control joints at a maximum 144 sq. ft. and placement as determined by the design professional.
- Install per requirements of ASTM C1063.
- Lath must be broken at the joint accessory.

SSWS-05 0424

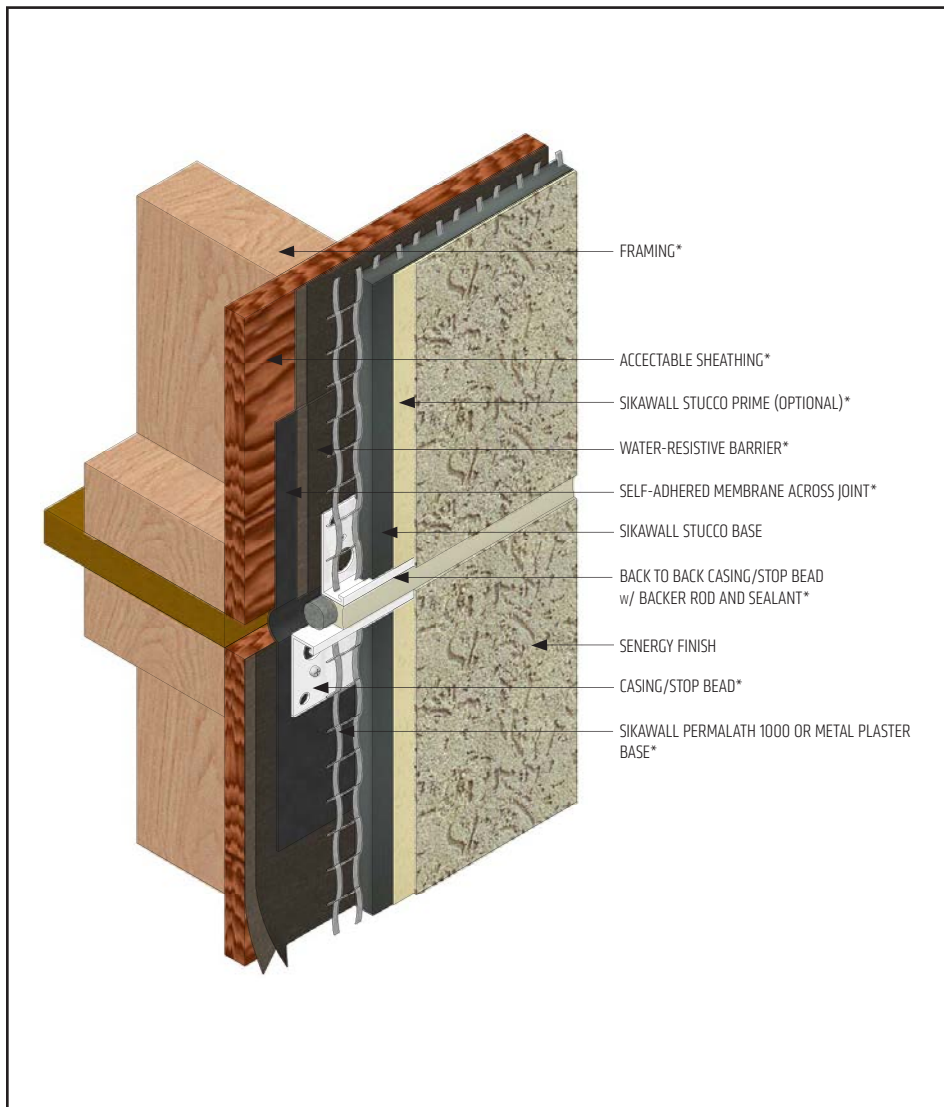
(*NOTE: BY OTHERS)

This detail represents Sika Corporation Construction Systems US, LLC (hereinafter Sika Corporation) latest recommendations. It is presented in good faith by Sika Corporation. The detail is subject to change without notice. Sika Corporation accepts no liability for the end use of the detail. For conditions not shown, consult Sika Corporation for review of specific detail.

- Install Sika materials in accordance with current installation instructions.
- Unsatisfactory conditions shall be reported to the General Contractor and corrected before the application of Sika products.

Sentry Stucco Wall System

TYPICAL EXPANSION JOINT



- Install expansion joints in the system at all changes in substrate, through existing expansion joints, and where movement is anticipated. It is the sole responsibility of the design professional to determine specific expansion joint location, placement and design.
- Install per requirements of ASTM C1063.
- Lath must be broken at the joint accessory.

SSWS-06 0424

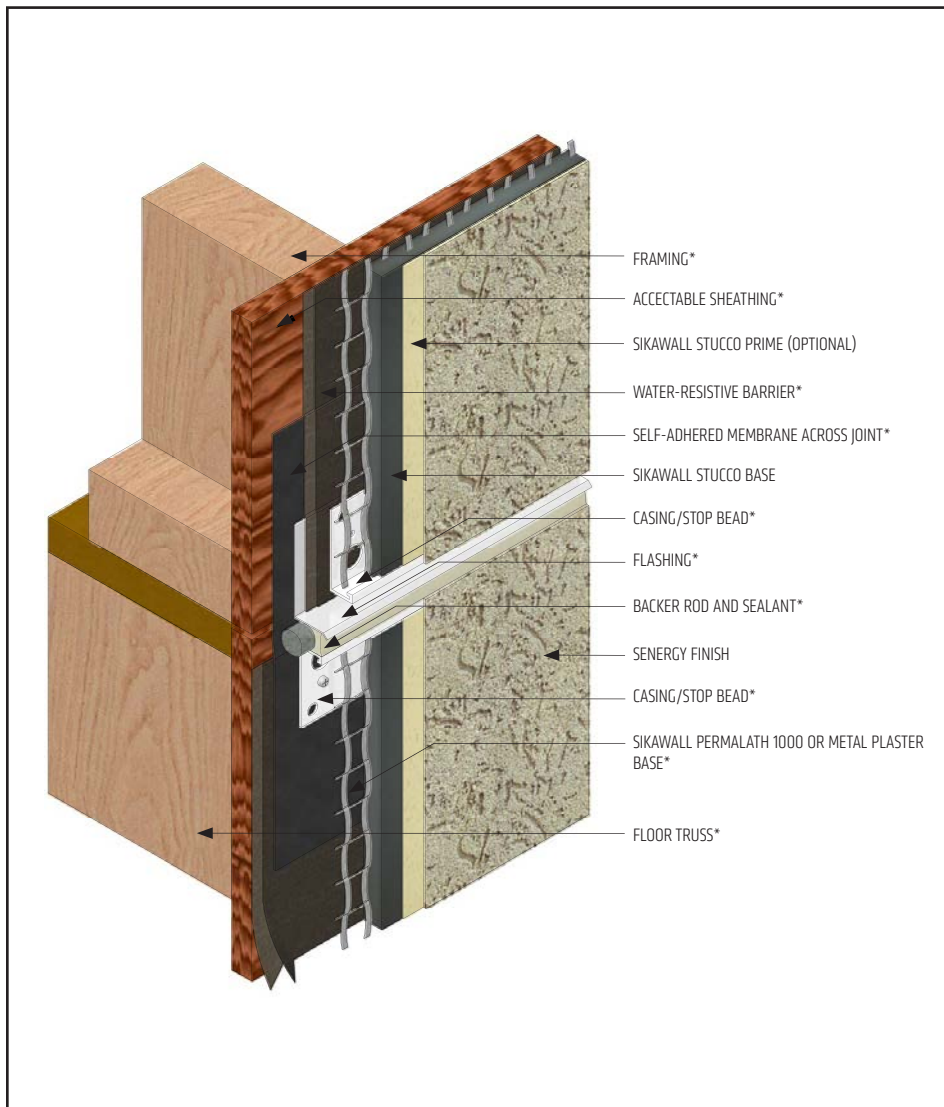
(*NOTE: BY OTHERS)

This detail represents Sika Corporation Construction Systems US, LLC (hereinafter Sika Corporation) latest recommendations. It is presented in good faith by Sika Corporation. The detail is subject to change without notice. Sika Corporation accepts no liability for the end use of the detail. For conditions not shown, consult Sika Corporation for review of specific detail.

- Install Sika materials in accordance with current installation instructions.
- Unsatisfactory conditions shall be reported to the General Contractor and corrected before the application of Sika products.

Sentry Stucco Wall System

TYPICAL DRAINAGE AT FLOORLINE



- Water-resistive barrier shall be installed over flashing.
- Water-resistive barrier shall be installed up and behind flashing before terminating.
- Install per requirements of ASTM C1063.
- Lath must be broken at the joint accessory.
- It is recommended that a means for drainage is provided at every floor.

SSWS-07 0424

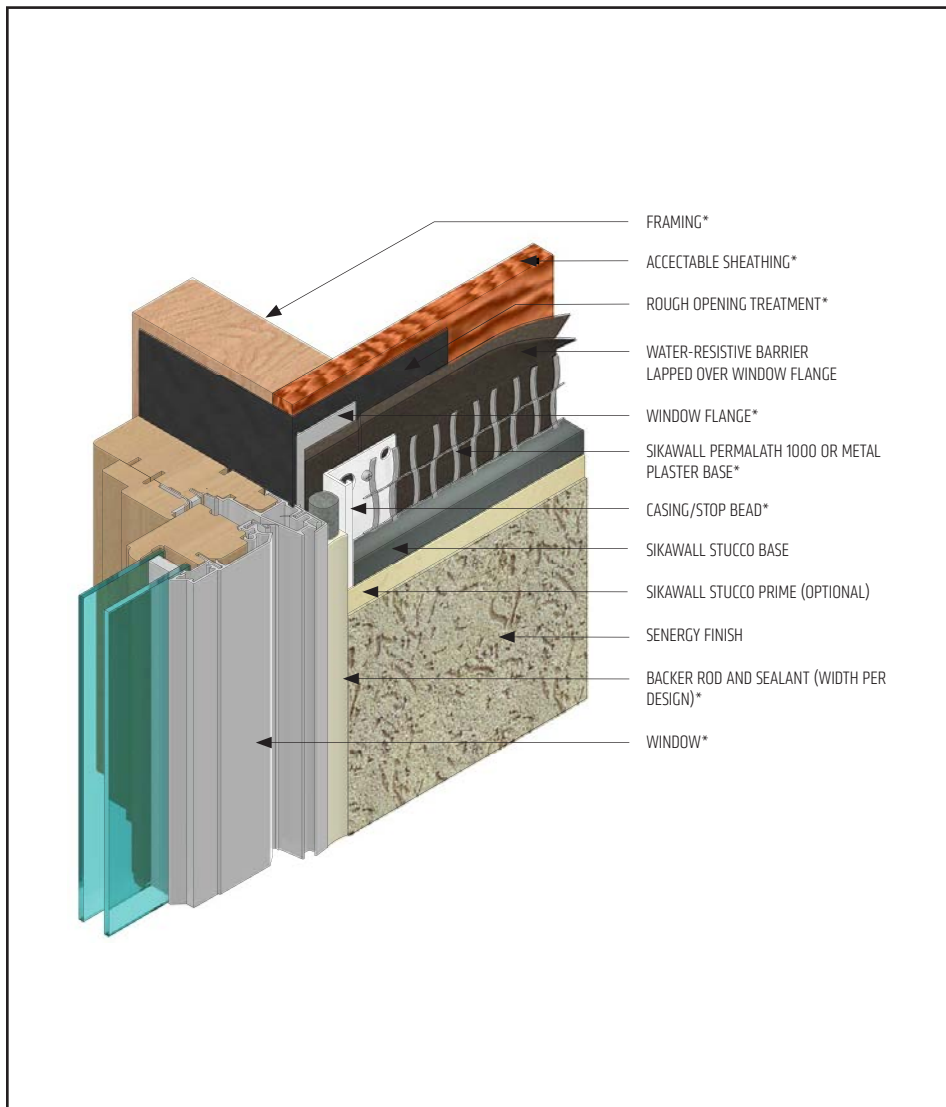
(*NOTE: BY OTHERS)

This detail represents Sika Corporation Construction Systems US, LLC (hereinafter Sika Corporation) latest recommendations. It is presented in good faith by Sika Corporation. The detail is subject to change without notice. Sika Corporation accepts no liability for the end use of the detail. For conditions not shown, consult Sika Corporation for review of specific detail.

- Install Sika materials in accordance with current installation instructions.
- Unsatisfactory conditions shall be reported to the General Contractor and corrected before the application of Sika products.

Sentry Stucco Wall System

TYPICAL CLAD WINDOW - JAMB



- Ensure water-resistive barrier is properly applied into the rough openings in accordance with application guidelines.

SSWS-08 0424

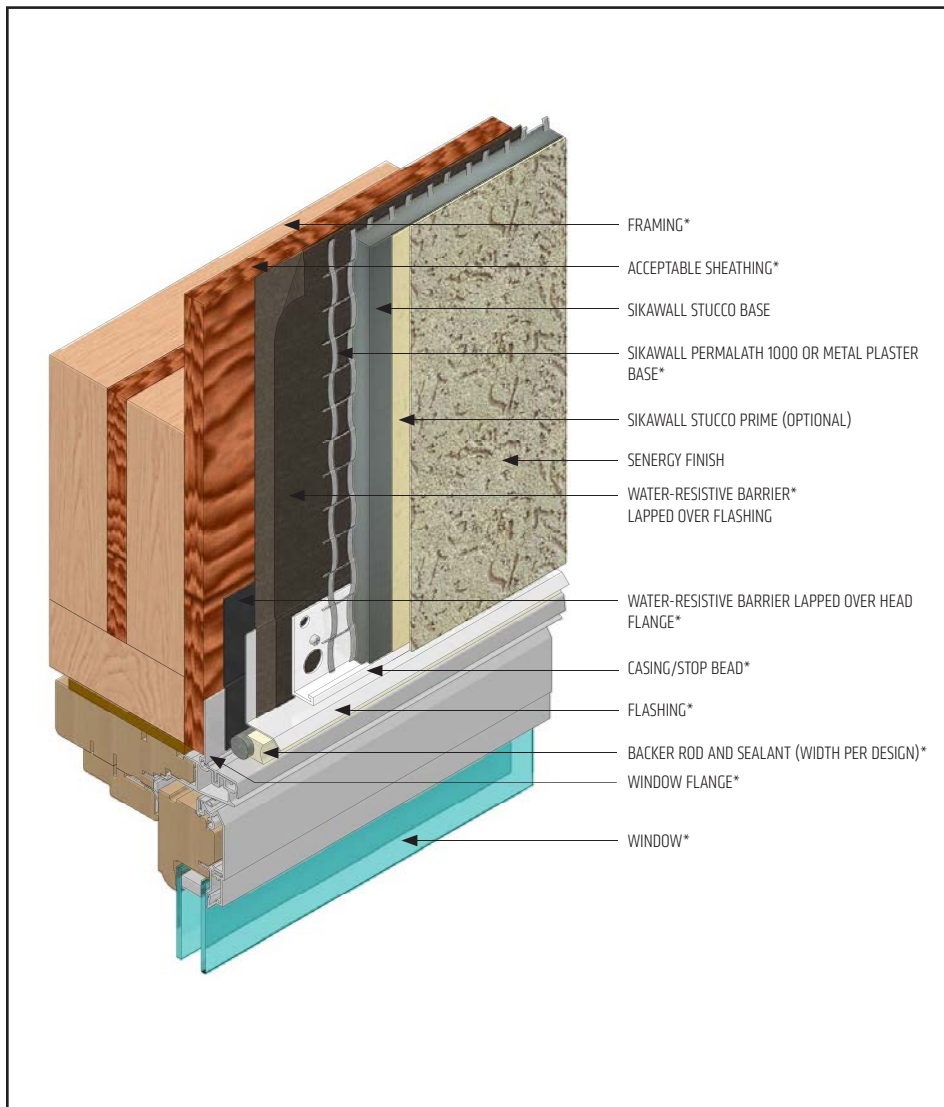
(*NOTE: BY OTHERS)

This detail represents Sika Corporation Construction Systems US, LLC (hereinafter Sika Corporation) latest recommendations. It is presented in good faith by Sika Corporation. The detail is subject to change without notice. Sika Corporation accepts no liability for the end use of the detail. For conditions not shown, consult Sika Corporation for review of specific detail.

- Install Sika materials in accordance with current installation instructions.
- Unsatisfactory conditions shall be reported to the General Contractor and corrected before the application of Sika products.

Sentry Stucco Wall System

TYPICAL CLAD WINDOW - HEAD



- Ensure water-resistive barrier is properly applied over the head flashing.
- Provide end-dams at flashing terminations.

SSWS-09 0424

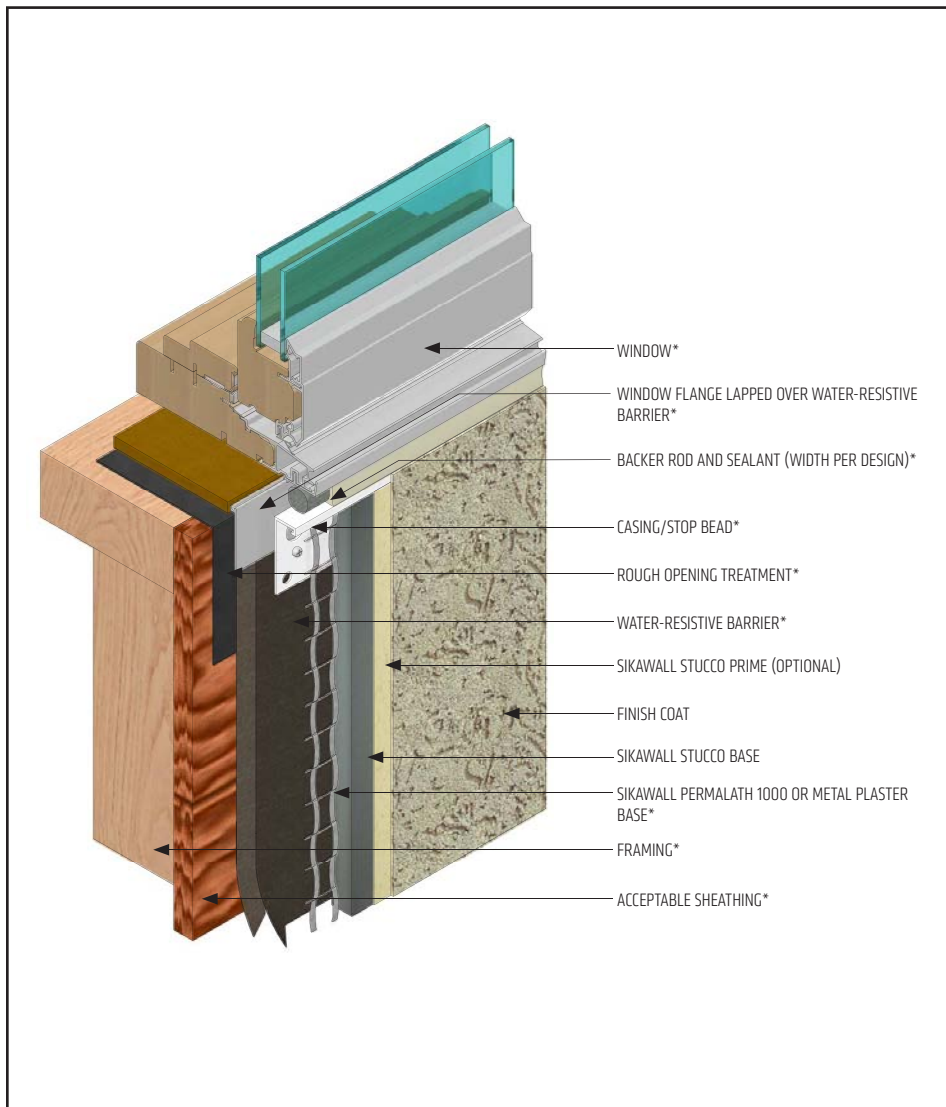
(*NOTE: BY OTHERS)

This detail represents Sika Corporation Construction Systems US, LLC (hereinafter Sika Corporation) latest recommendations. It is presented in good faith by Sika Corporation. The detail is subject to change without notice. Sika Corporation accepts no liability for the end use of the detail. For conditions not shown, consult Sika Corporation for review of specific detail.

- Install Sika materials in accordance with current installation instructions.
- Unsatisfactory conditions shall be reported to the General Contractor and corrected before the application of Sika products.

Sentry Stucco Wall System

TYPICAL CLAD WINDOW – SILL



- Ensure water-resistive barrier is properly applied into the rough openings in accordance with application guidelines.

SSWS-10 0424

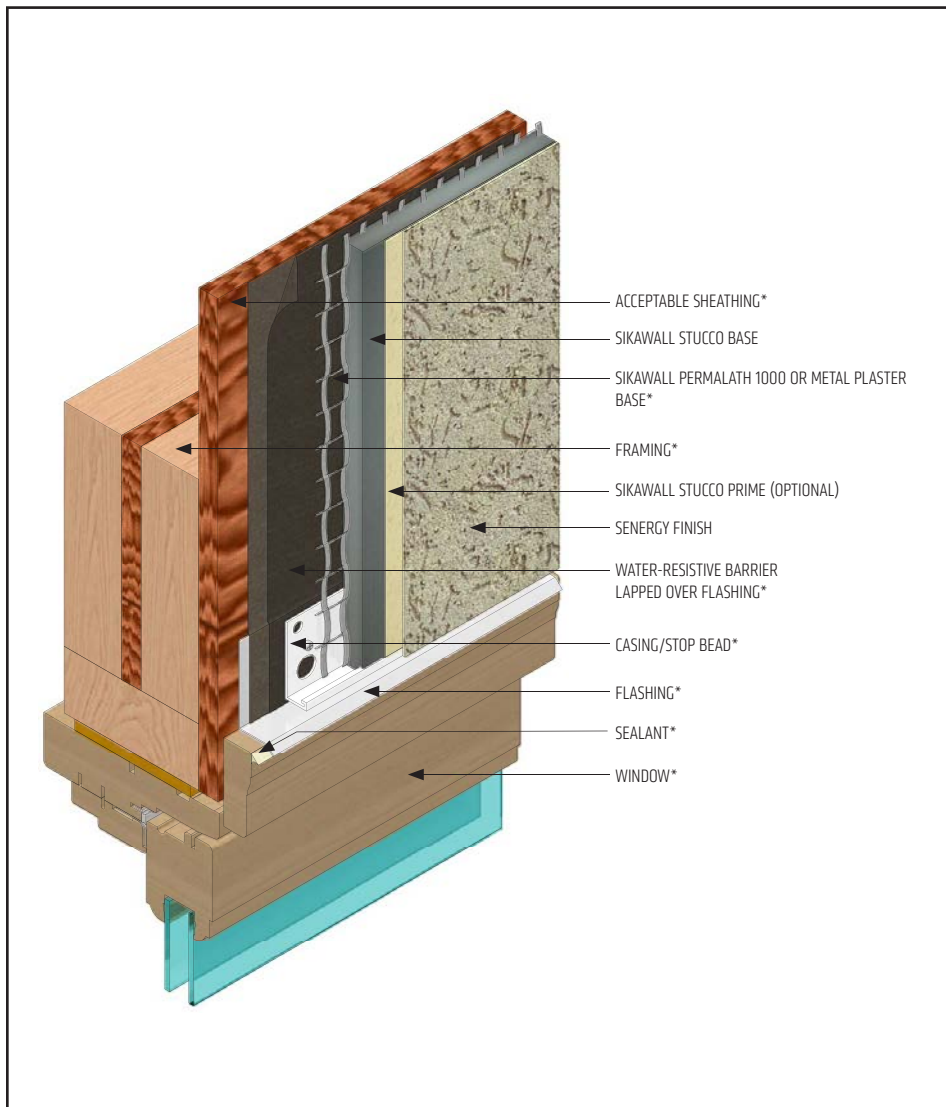
(*NOTE: BY OTHERS)

This detail represents Sika Corporation Construction Systems US, LLC (hereinafter Sika Corporation) latest recommendations. It is presented in good faith by Sika Corporation. The detail is subject to change without notice. Sika Corporation accepts no liability for the end use of the detail. For conditions not shown, consult Sika Corporation for review of specific detail.

- Install Sika materials in accordance with current installation instructions.
- Unsatisfactory conditions shall be reported to the General Contractor and corrected before the application of Sika products.

Sentry Stucco Wall System

TYPICAL PRIMED WINDOW - HEAD



- Ensure water-resistive barrier is properly applied over the head flashing.
- Provide end-dams at flashing terminations.

SSWS-11 0424

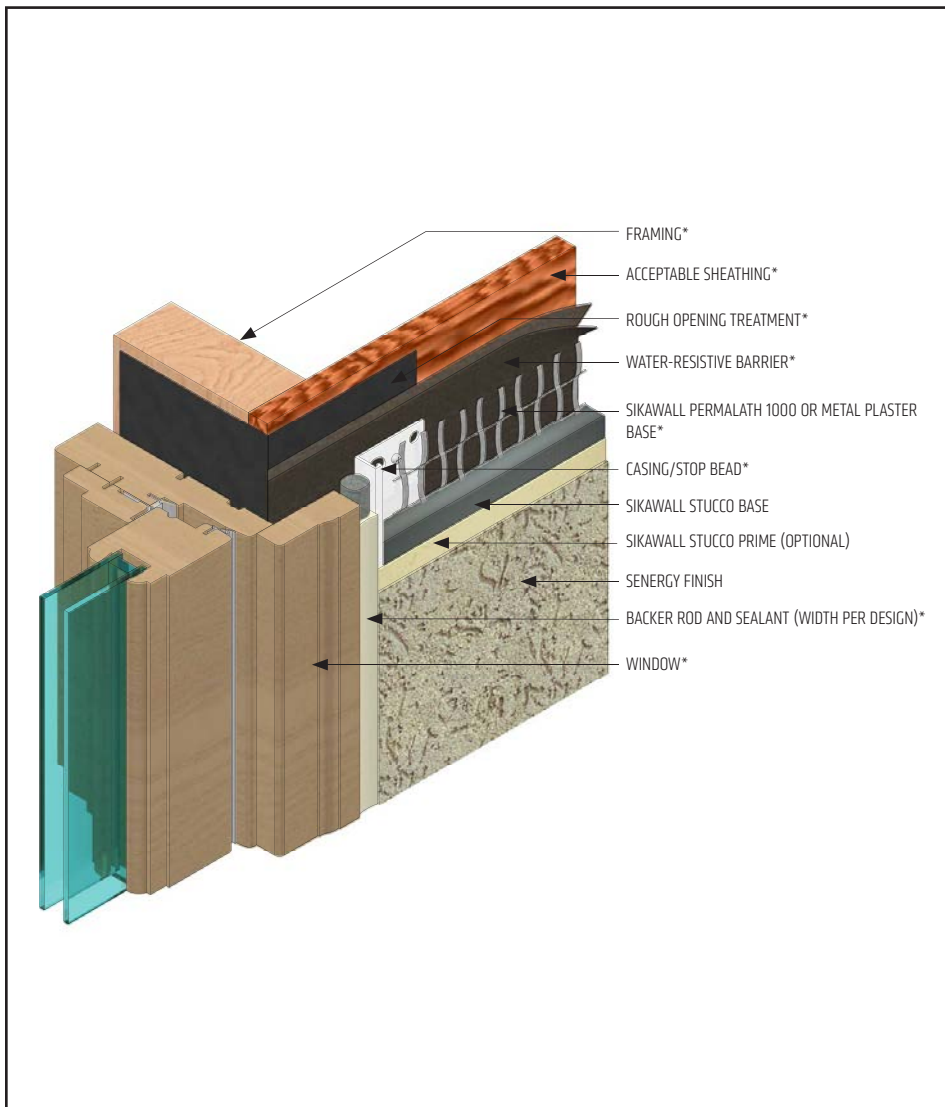
(*NOTE: BY OTHERS)

This detail represents Sika Corporation Construction Systems US, LLC (hereinafter Sika Corporation) latest recommendations. It is presented in good faith by Sika Corporation. The detail is subject to change without notice. Sika Corporation accepts no liability for the end use of the detail. For conditions not shown, consult Sika Corporation for review of specific detail.

- Install Sika materials in accordance with current installation instructions.
- Unsatisfactory conditions shall be reported to the General Contractor and corrected before the application of Sika products.

Sentry Stucco Wall System

TYPICAL PRIMED WINDOW - JAMB



- Ensure water-resistive barrier is properly applied into the rough openings.

SSWS-12 0424

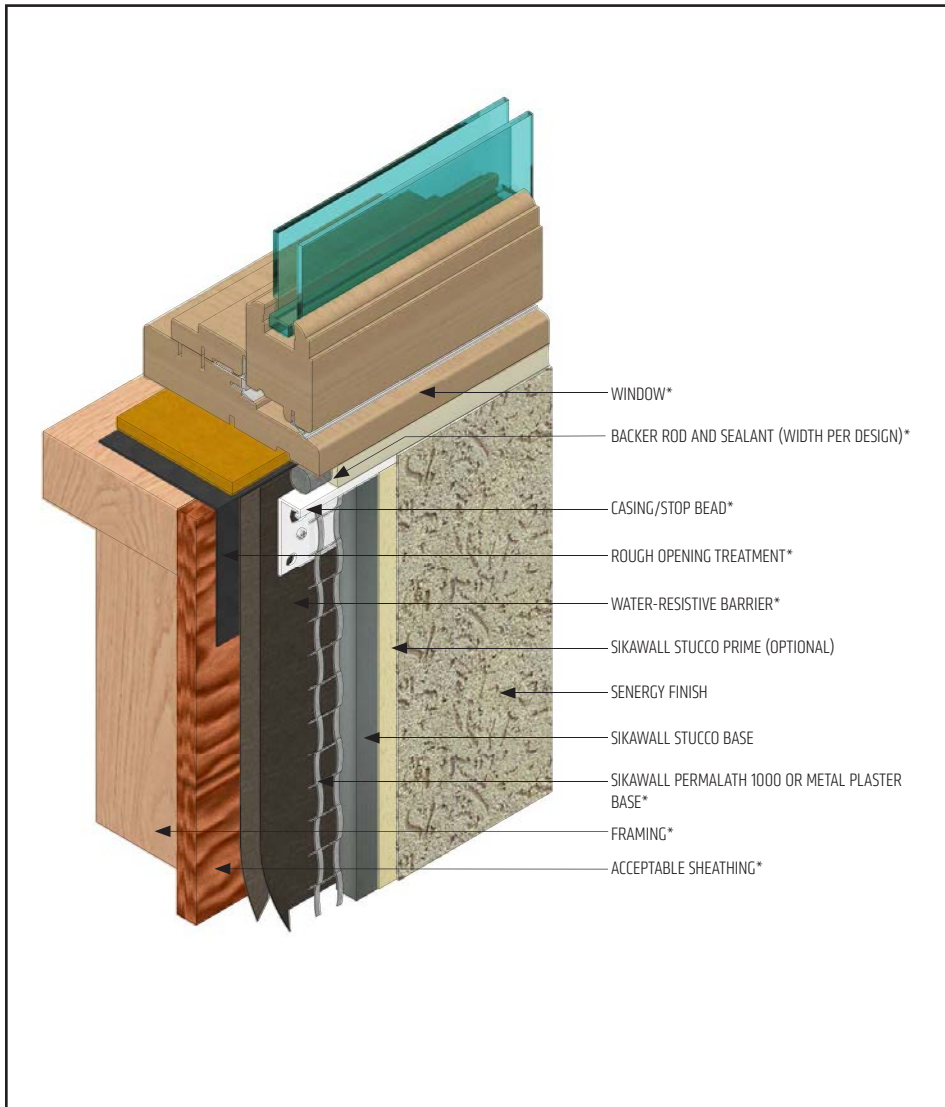
(*NOTE: BY OTHERS)

This detail represents Sika Corporation Construction Systems US, LLC (hereinafter Sika Corporation) latest recommendations. It is presented in good faith by Sika Corporation. The detail is subject to change without notice. Sika Corporation accepts no liability for the end use of the detail. For conditions not shown, consult Sika Corporation for review of specific detail.

- Install Sika materials in accordance with current installation instructions.
- Unsatisfactory conditions shall be reported to the General Contractor and corrected before the application of Sika products.

Sentry Stucco Wall System

TYPICAL PRIMED WINDOW - SILL



- Ensure water-resistive barrier is properly applied into the rough openings.

SSWS-13 0424

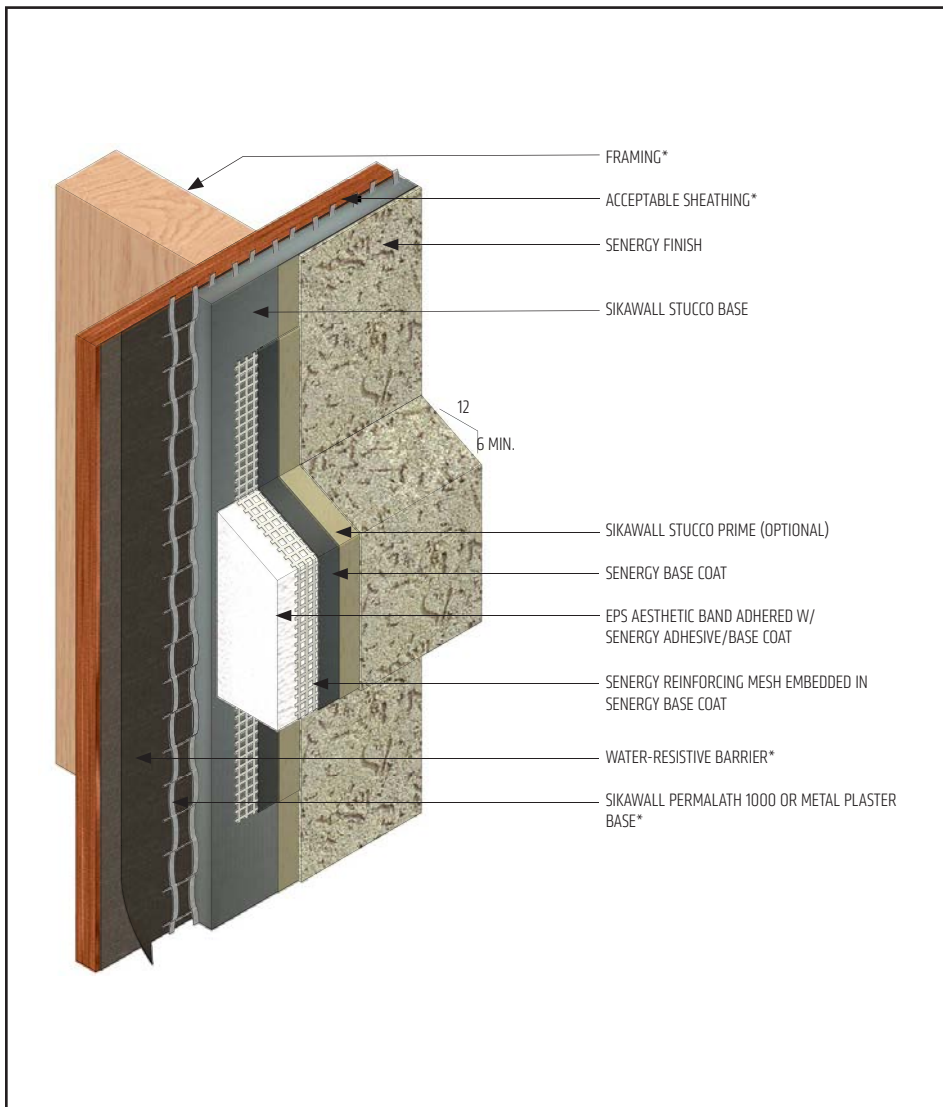
(*NOTE: BY OTHERS)

This detail represents Sika Corporation Construction Systems US, LLC (hereinafter Sika Corporation) latest recommendations. It is presented in good faith by Sika Corporation. The detail is subject to change without notice. Sika Corporation accepts no liability for the end use of the detail. For conditions not shown, consult Sika Corporation for review of specific detail.

- Install Sika materials in accordance with current installation instructions.
- Unsatisfactory conditions shall be reported to the General Contractor and corrected before the application of Sika products.

Sentry Stucco Wall System

TYPICAL EPS SHAPE APPLICATION



- Overlap reinforced base coat onto SikaWall Stucco Base minimum of 3" (76 mm).
- On horizontal projections greater than one inch maintain a minimum 6:12 slope.

SSWS-14 0424

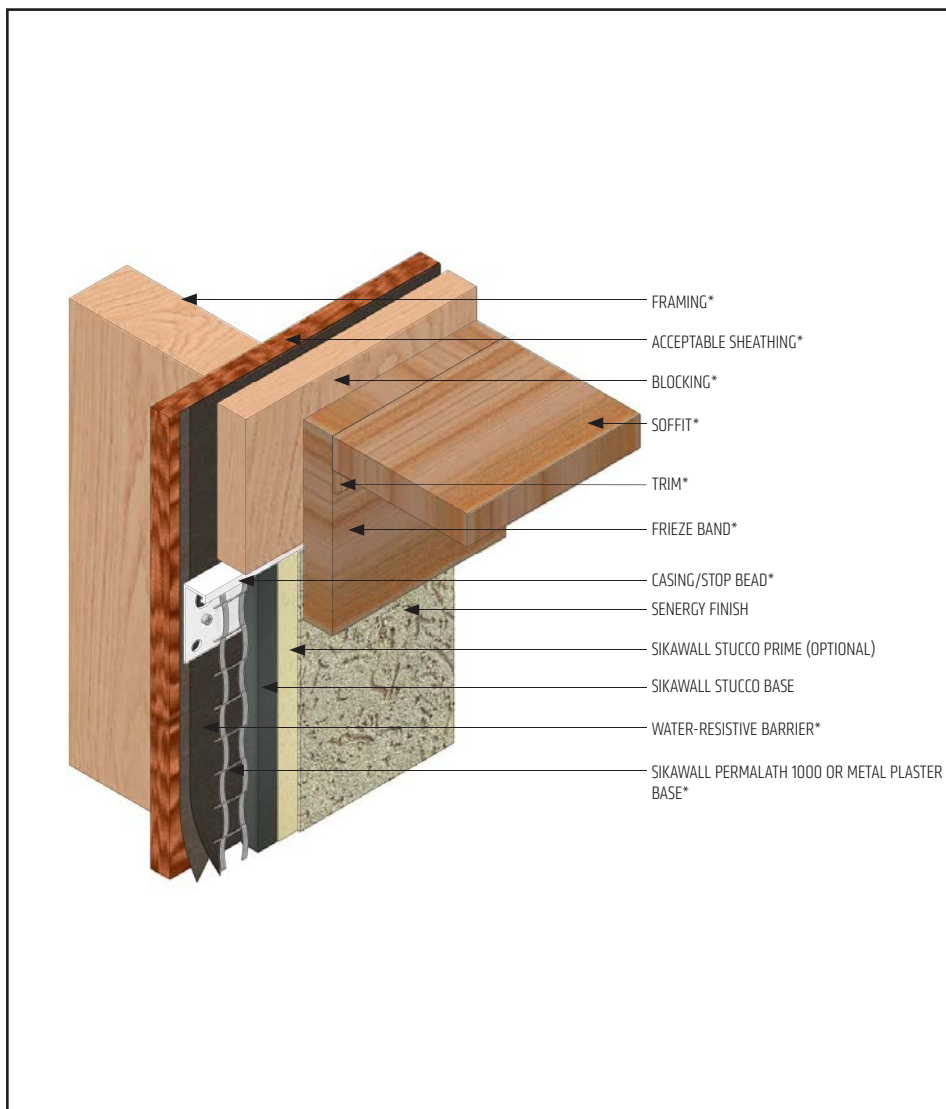
(*NOTE: BY OTHERS)

This detail represents Sika Corporation Construction Systems US, LLC (hereinafter Sika Corporation) latest recommendations. It is presented in good faith by Sika Corporation. The detail is subject to change without notice. Sika Corporation accepts no liability for the end use of the detail. For conditions not shown, consult Sika Corporation for review of specific detail.

- Install Sika materials in accordance with current installation instructions.
- Unsatisfactory conditions shall be reported to the General Contractor and corrected before the application of Sika products.

Sentry Stucco Wall System

TYPICAL TERMINATION AT SOFFIT/GABLE END



SSWS-15 0424

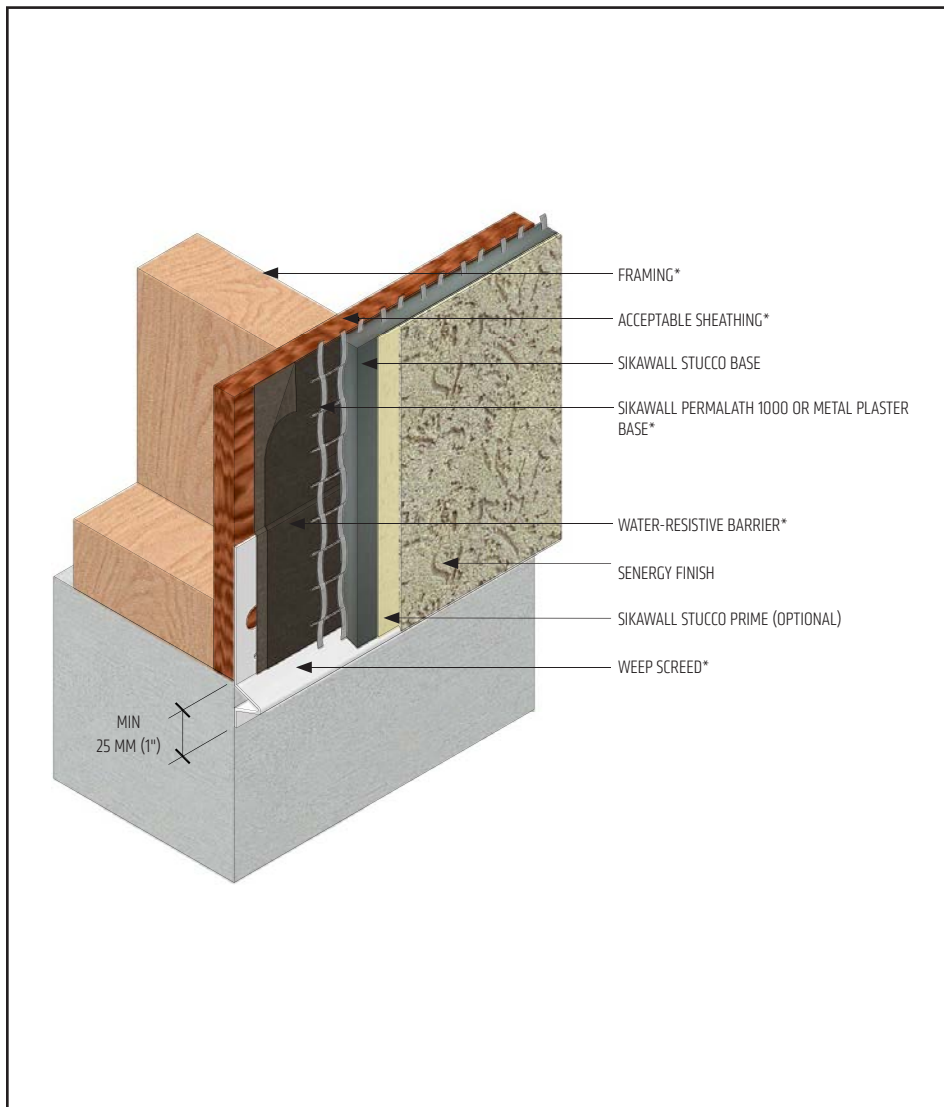
(*NOTE: BY OTHERS)

This detail represents Sika Corporation Construction Systems US, LLC (hereinafter Sika Corporation) latest recommendations. It is presented in good faith by Sika Corporation. The detail is subject to change without notice. Sika Corporation accepts no liability for the end use of the detail. For conditions not shown, consult Sika Corporation for review of specific detail.

- Install Sika materials in accordance with current installation instructions.
- Unsatisfactory conditions shall be reported to the General Contractor and corrected before the application of Sika products.

Sentry Stucco Wall System

TYPICAL TERMINATION AT FOUNDATION



- Per ASTM C1063 terminate the stucco wall system a minimum of 4" (102 mm) above raw earth and 2" (51 mm) above paved surface.
- Water-resistive barrier shall be installed over weep screed flange.

SSWS-16 0424

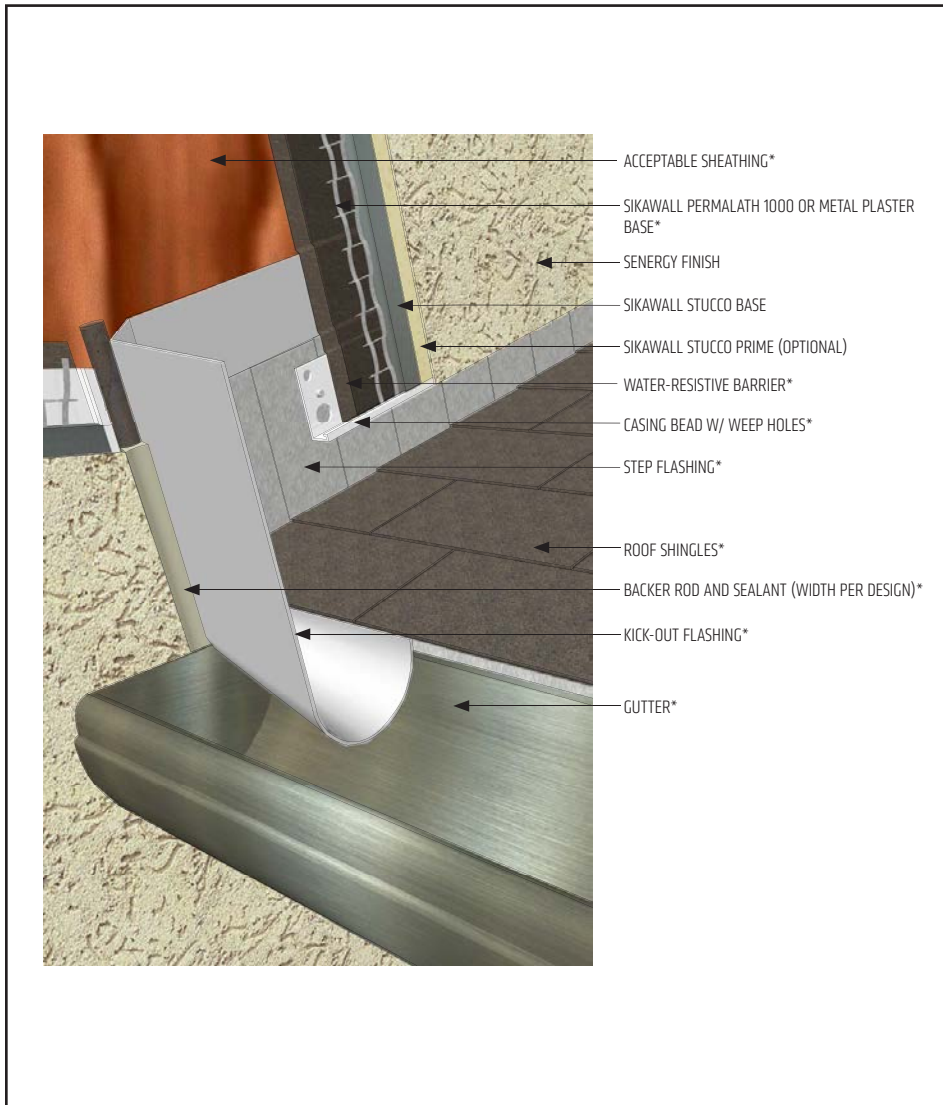
(*NOTE: BY OTHERS)

This detail represents Sika Corporation Construction Systems US, LLC (hereinafter Sika Corporation) latest recommendations. It is presented in good faith by Sika Corporation. The detail is subject to change without notice. Sika Corporation accepts no liability for the end use of the detail. For conditions not shown, consult Sika Corporation for review of specific detail.

- Install Sika materials in accordance with current installation instructions.
- Unsatisfactory conditions shall be reported to the General Contractor and corrected before the application of Sika products.

Sentry Stucco Wall System

TYPICAL KICK-OUT FLASHING



- Terminate Stucco Wall System a minimum of 2" (50 mm) above sloped roof.
- Ensure step flashing is a minimum 2" (50 mm) behind Sentry Stucco Wall System.
- Kick-out flashing shall be a minimum 4" (100 mm) in height.
- Kick-out flashing shall be angled a minimum 100° with seams sealed or soldered.
- Ensure a means for drainage is provided at system termination at roof.

SSWS-17 0424

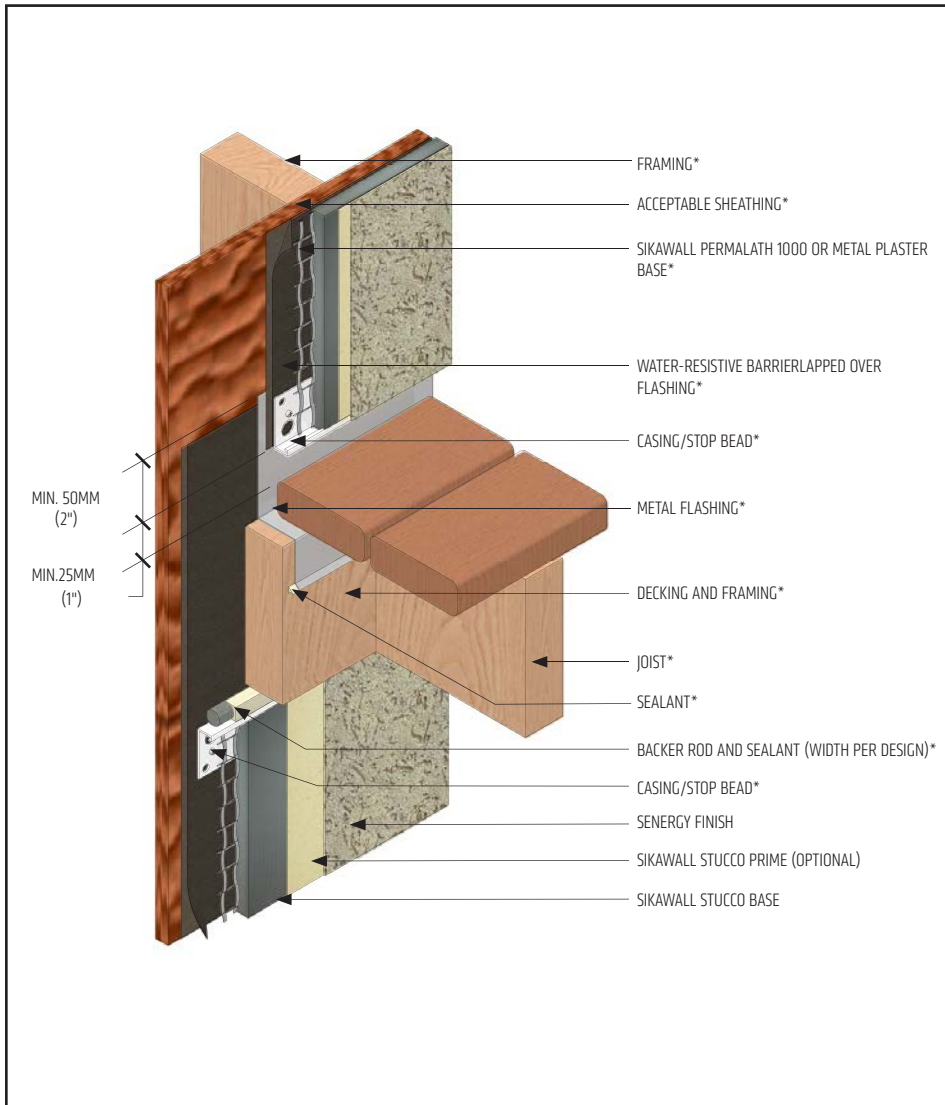
(*NOTE: BY OTHERS)

This detail represents Sika Corporation Construction Systems US, LLC (hereinafter Sika Corporation) latest recommendations. It is presented in good faith by Sika Corporation. The detail is subject to change without notice. Sika Corporation accepts no liability for the end use of the detail. For conditions not shown, consult Sika Corporation for review of specific detail.

- Install Sika materials in accordance with current installation instructions.
- Unsatisfactory conditions shall be reported to the General Contractor and corrected before the application of Sika products.

Sentry Stucco Wall System

TYPICAL TERMINATION AT DECK



- Water-resistive barrier shall be installed over flashing.
- Water-resistive barrier shall be installed up and behind metal flashing before terminating.

SSWS-18 0424

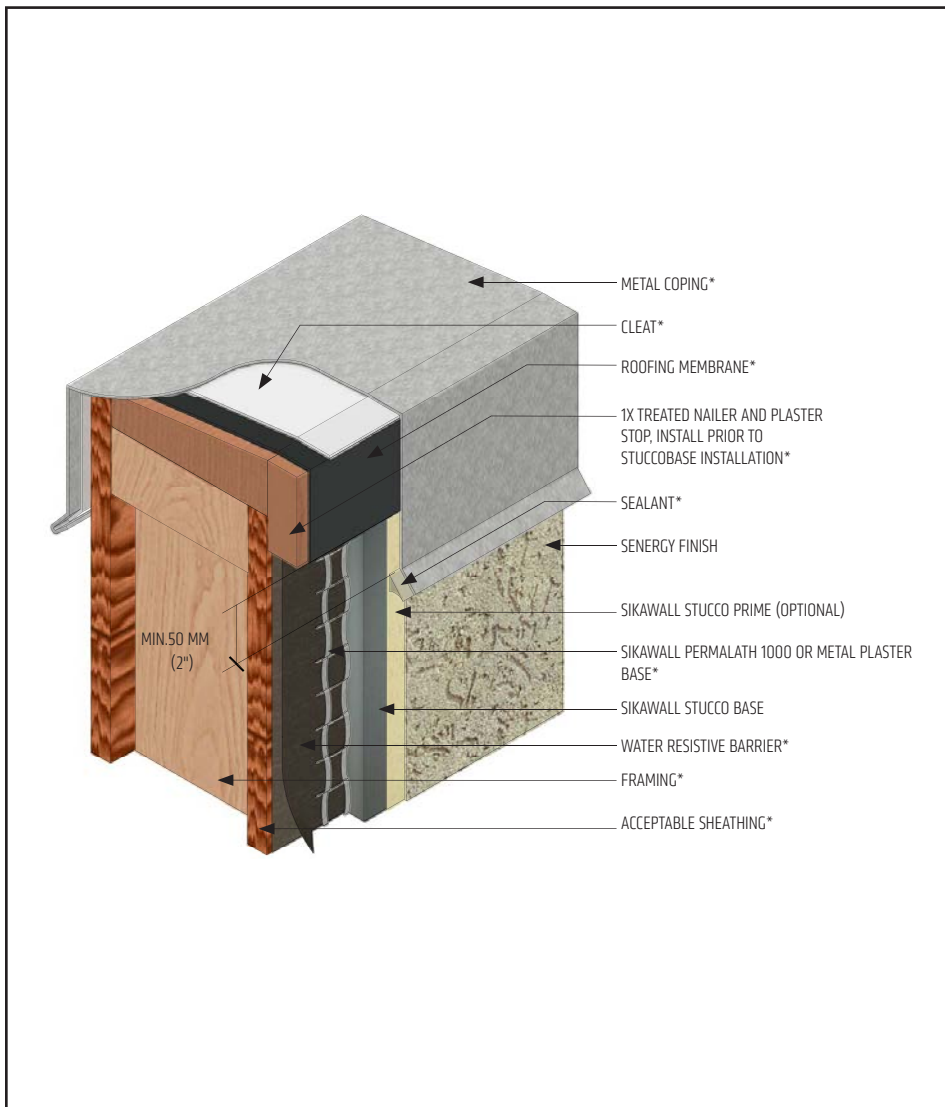
(*NOTE: BY OTHERS)

This detail represents Sika Corporation Construction Systems US, LLC (hereinafter Sika Corporation) latest recommendations. It is presented in good faith by Sika Corporation. The detail is subject to change without notice. Sika Corporation accepts no liability for the end use of the detail. For conditions not shown, consult Sika Corporation for review of specific detail.

- Install Sika materials in accordance with current installation instructions.
- Unsatisfactory conditions shall be reported to the General Contractor and corrected before the application of Sika products.

Sentry Stucco Wall System

TYPICAL COPING



- Extend coping a minimum of 2" (51 mm) on to face of Sentry Stucco Wall System and seal drip edge.

SSWS-19 0424

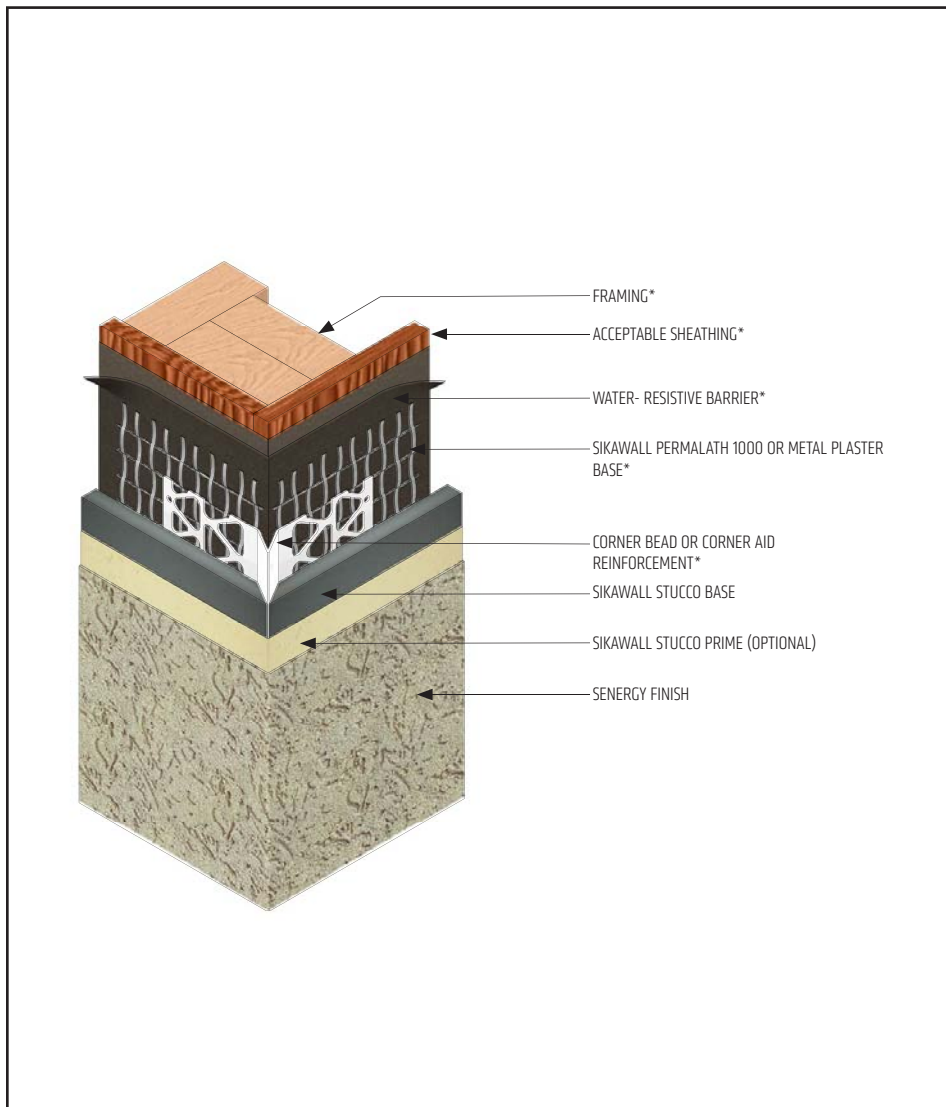
(*NOTE: BY OTHERS)

This detail represents Sika Corporation Construction Systems US, LLC (hereinafter Sika Corporation) latest recommendations. It is presented in good faith by Sika Corporation. The detail is subject to change without notice. Sika Corporation accepts no liability for the end use of the detail. For conditions not shown, consult Sika Corporation for review of specific detail.

- Install Sika materials in accordance with current installation instructions.
- Unsatisfactory conditions shall be reported to the General Contractor and corrected before the application of Sika products.

Sentry Stucco Wall System

TYPICAL CORNER BEAD



- Attach corner bead over plaster base.
- Water-resistive barrier shall be installed continuous around corner a minimum of 12" (305 mm).
- Corner bead shall be filled solid with StuccoBase.

SSWS-20 0424

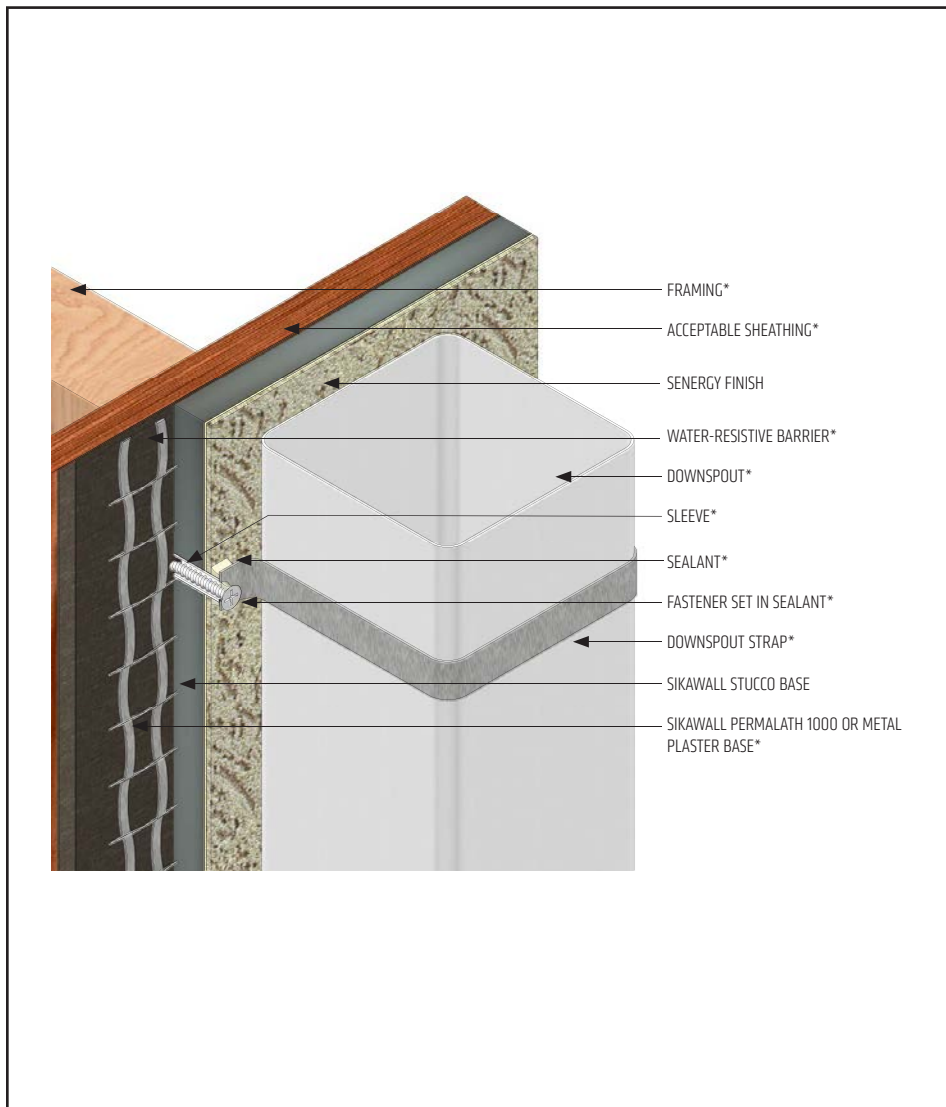
(*NOTE: BY OTHERS)

This detail represents Sika Corporation Construction Systems US, LLC (hereinafter Sika Corporation) latest recommendations. It is presented in good faith by Sika Corporation. The detail is subject to change without notice. Sika Corporation accepts no liability for the end use of the detail. For conditions not shown, consult Sika Corporation for review of specific detail.

- Install Sika materials in accordance with current installation instructions.
- Unsatisfactory conditions shall be reported to the General Contractor and corrected before the application of Sika products.

Sentry Stucco Wall System

TYPICAL DOWNSPOUT APPLICATION



- Properly seal all penetrations through the Sentry Stucco Wall System.

SSWS-21 0424

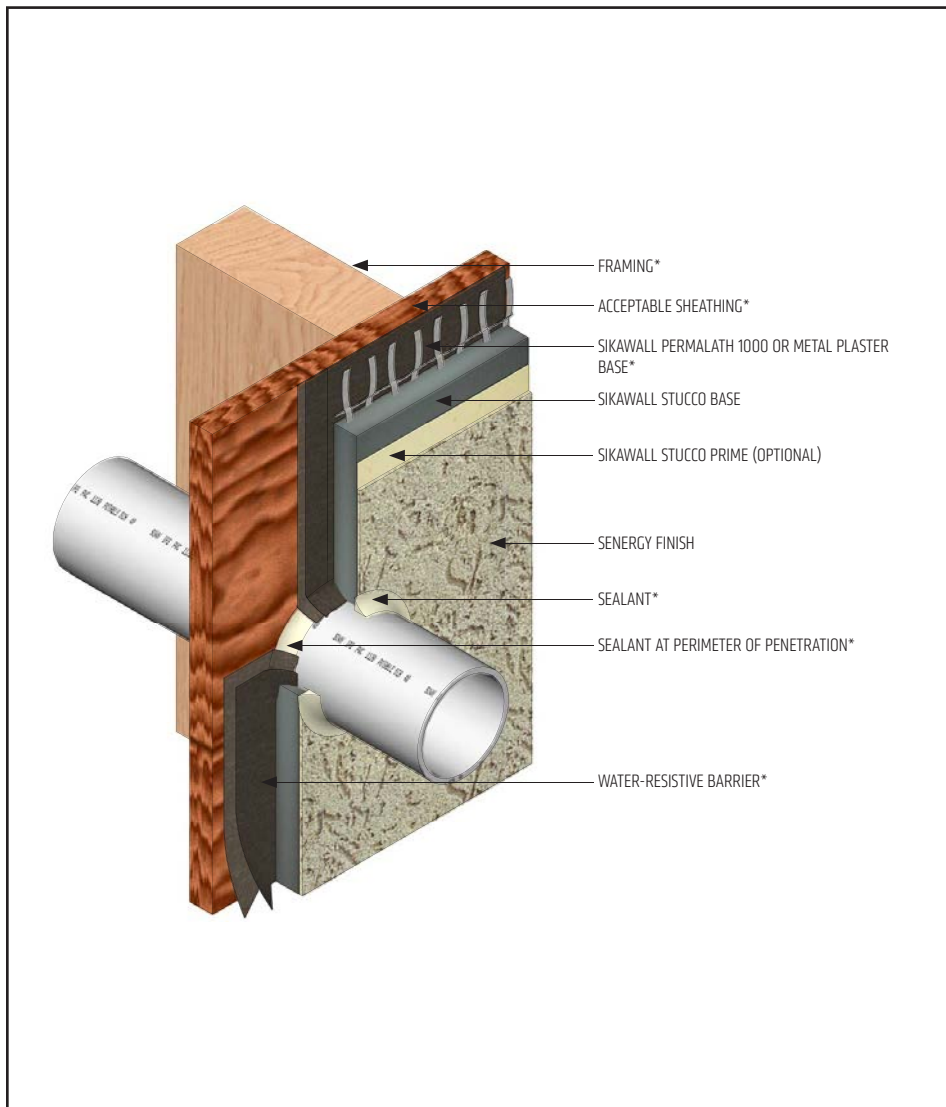
(*NOTE: BY OTHERS)

This detail represents Sika Corporation Construction Systems US, LLC (hereinafter Sika Corporation) latest recommendations. It is presented in good faith by Sika Corporation. The detail is subject to change without notice. Sika Corporation accepts no liability for the end use of the detail. For conditions not shown, consult Sika Corporation for review of specific detail.

- Install Sika materials in accordance with current installation instructions.
- Unsatisfactory conditions shall be reported to the General Contractor and corrected before the application of Sika products.

Sentry Stucco Wall System

TYPICAL PIPE PENETRATION



- Properly seal all penetrations through the Sentry Stucco Wall System.

SSWS-22 0424

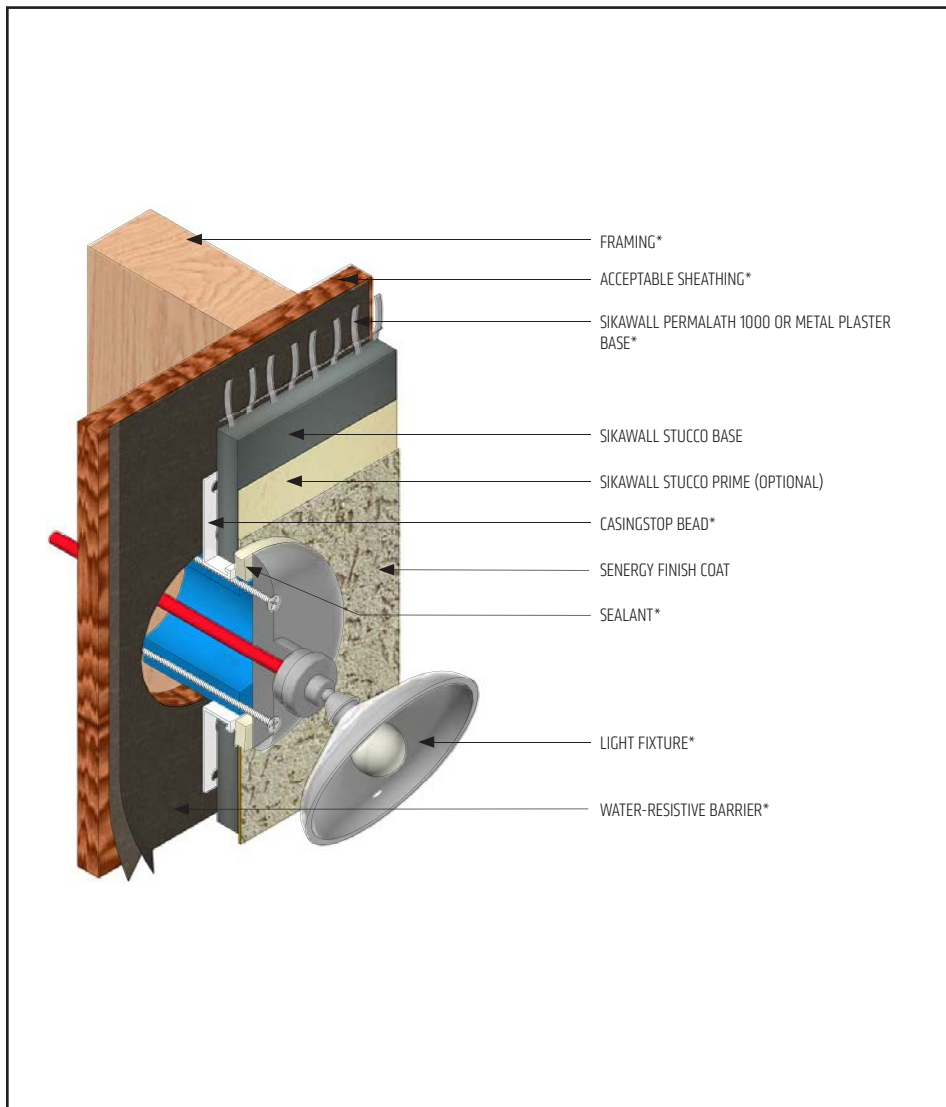
(*NOTE: BY OTHERS)

This detail represents Sika Corporation Construction Systems US, LLC (hereinafter Sika Corporation) latest recommendations. It is presented in good faith by Sika Corporation. The detail is subject to change without notice. Sika Corporation accepts no liability for the end use of the detail. For conditions not shown, consult Sika Corporation for review of specific detail.

- Install Sika materials in accordance with current installation instructions.
- Unsatisfactory conditions shall be reported to the General Contractor and corrected before the application of Sika products.

Sentry Stucco Wall System

TYPICAL LIGHT FIXTURE



- Properly seal all penetrations through the Sentry Stucco Wall System.

SSWS-23 0424

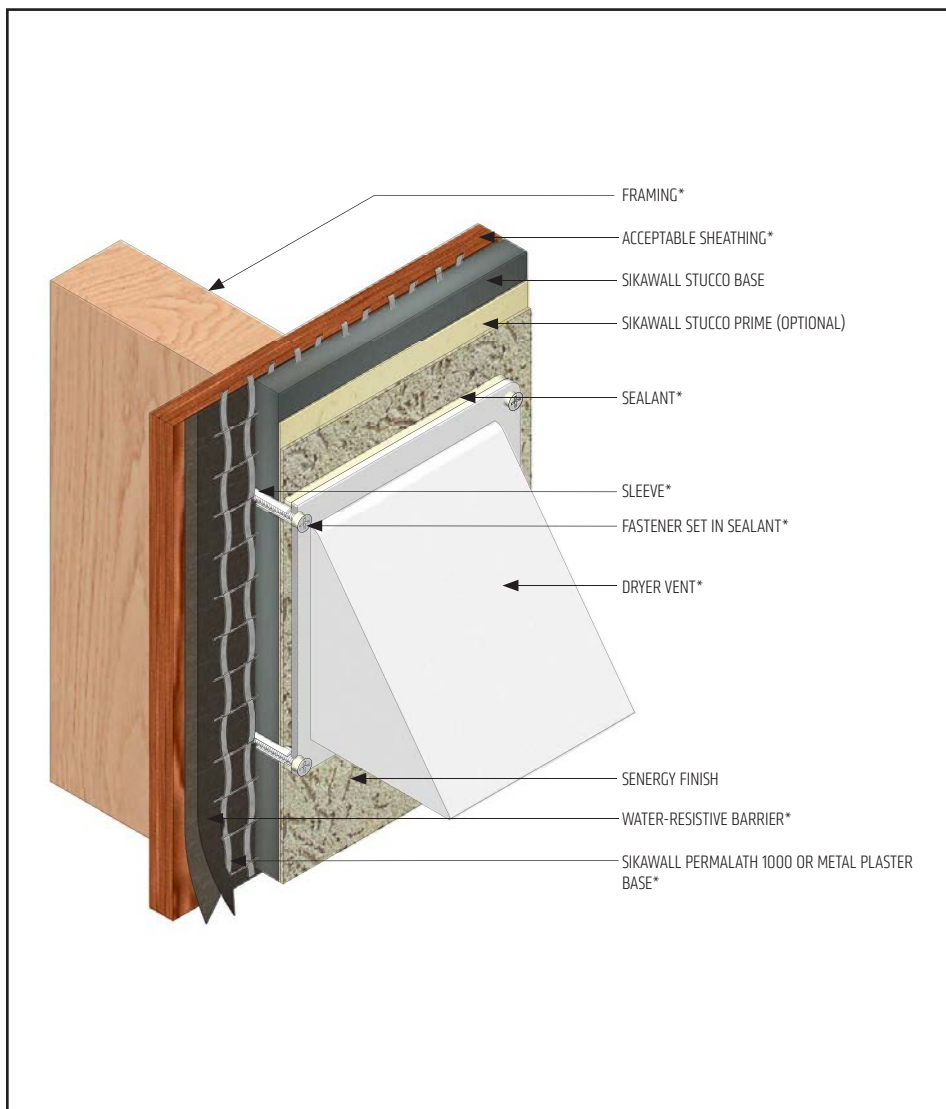
(*NOTE: BY OTHERS)

This detail represents Sika Corporation Construction Systems US, LLC (hereinafter Sika Corporation) latest recommendations. It is presented in good faith by Sika Corporation. The detail is subject to change without notice. Sika Corporation accepts no liability for the end use of the detail. For conditions not shown, consult Sika Corporation for review of specific detail.

- Install Sika materials in accordance with current installation instructions.
- Unsatisfactory conditions shall be reported to the General Contractor and corrected before the application of Sika products.

Sentry Stucco Wall System

TYPICAL DRYER VENT



- Properly seal all penetrations through the Sentry Stucco Wall System.

SSWS-24 0424

(*NOTE: BY OTHERS)

This detail represents Sika Corporation Construction Systems US, LLC (hereinafter Sika Corporation) latest recommendations. It is presented in good faith by Sika Corporation. The detail is subject to change without notice. Sika Corporation accepts no liability for the end use of the detail. For conditions not shown, consult Sika Corporation for review of specific detail.

- Install Sika materials in accordance with current installation instructions.
- Unsatisfactory conditions shall be reported to the General Contractor and corrected before the application of Sika products.



LIMITED WARRANTY NOTICE

Prior to each use of any product of Sika Corporation, its subsidiaries or affiliates ("SIKA"), the user must always read and follow the warnings and instructions on the product's most current product label, Product Data Sheet and Safety Data Sheet which are available at usa.sika.com/senenergy or by calling our Technical Service Department at +1 (800) 589-1336.

Nothing contained in any SIKA literature or materials relieves the user of the obligation to read and follow the warnings and instructions for each SIKA product as set forth in the current product label, Product Data Sheet and Safety Data Sheet prior to use of the SIKA product.

SIKA warrants this product for one year from date of installation to be free from manufacturing defects and to meet the technical properties on the current Product Data Sheet if used as directed within the product's shelf life. User determines suitability of product for intended use and assumes all risks. User's and/or buyer's sole remedy shall be limited to the purchase price or replacement of this product exclusive of any labor costs. NO OTHER WARRANTIES EXPRESS OR IMPLIED SHALL APPLY INCLUDING ANY WARRANTY OF MERCHANTABILITY OR FITNESS FOR A PARTICULAR PURPOSE. SIKA SHALL NOT BE LIABLE UNDER ANY LEGAL THEORY FOR SPECIAL OR CONSEQUENTIAL DAMAGES. SIKA SHALL NOT BE RESPONSIBLE FOR THE USE OF THIS PRODUCT IN A MANNER TO INFRINGE ON ANY PATENT OR ANY OTHER INTELLECTUAL PROPERTY RIGHTS HELD BY OTHERS. Sale of SIKA products are subject to the Terms and Conditions of Sale which are available at usa.sika.com.

For the most current version of this literature, please visit our website at usa.sika.com/senergy.

Sika Corporation

201 Polito Avenue
Lyndhurst, NJ 07071 USA
Customer Service +1 (800) 433-9517
Technical Service +1 (800) 589-1336
usa.sika.com/senergy

Rev April 2024

BUILDING TRUST

