

## Channeled Insulation Design

Water Drainage Class PB Exterior Insulation and Finish System incorporating a channeled EPS insulation board and air/water-resistive barrier.

### SYSTEM DESCRIPTION

Channeled Insulation Design is a continuously insulated rainscreen wall cladding system. It features a Senershield fluid-applied air/water-resistive barrier, vertical beads of adhesive and channeled insulation board up to R46 continuous exterior insulation, mechanically attached strip of Drainage Mat at horizontal drainage terminations optional Hi-Impact mesh and a wide range of finish options.

### USES

Channeled Insulation Design may be used in fire-resistance-rated construction and in any construction type (IBC Types I through V), when installed in accordance with Sika Facades instructions.

### CODE COMPLIANCE

Document	Code Description
ICC-ESR 1878	2015 IBC, 2015 IRC
CCMC 13062-R	National Building Code of Canada 2015
Miami Dade NOAs	Meets Miami Dade hurricane requirements
ICC-ESR 2986 (Senershield-R)	Air/water-resistive barrier*
Air Barrier Association of America recognized (Senershield-R/-VB)	Can be used on projects where ABAA recognized air barriers are specified

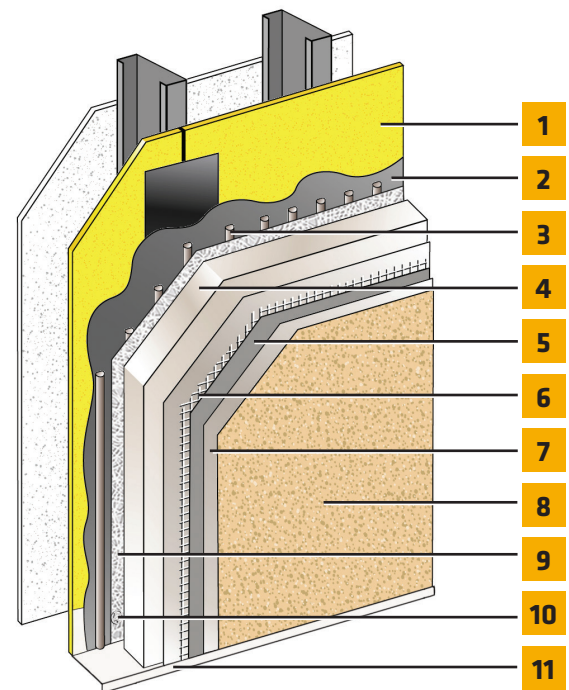
\*Senershield-R/-RS/-VB can be used behind all claddings where more than one wall system is specified, creating one continuous AWRB system. This is appropriate whenever Senergy Channeled Insulation Design is used with other cladding types on a multi-clad building.

### MATERIAL SUBSTITUTION

Material substitution will adversely affect system performance and will void all warranty coverage unless approved in writing by Sika Facades.

### TEST RESULTS

For testing, please see Channeled Insulation Design Test Results Technical Bulletin on our website at [senergy-mbcc.sika.com/en](http://senergy-mbcc.sika.com/en).



- 1.** Acceptable substrates:  
Poured concrete/unit masonry, ASTM C1177 type sheathings, including DensGlass™ or DensElement exterior sheathing (sheathing only), eXP™ sheathing, GlasRoc® sheathing, Securock™ glass-mat sheathing, Weather Defense™ Platinum sheathing, GreenGlass® sheathing; PermaBase™ cement-board and other cement-boards (ASTM C1325 Type A Exterior); Untreated Exposure I or exterior plywood sheathing (grade C-D or better), Untreated Exposure I OSB, Zip Sheathing (sheathing only) Fire Treated wood sheathing; Pyro-Guard® and Dricon® plywood and FlameBlock® OSB; gypsum sheathing (ASTM C79/ASTM C1396).
- 2.** Senershield-R/-RS/-VB
- 3.** Senergy Adhesive
- 4.** Approved Channeled EPS Insulation Board\*
- 5.** Senergy Base Coat
- 6.** Senergy Reinforcing Mesh
- 7.** SikaWall Tinted Primer (optional)
- 8.** Senergy Finish Coat
- 9.** SikaWall Drainage Mat DF
- 10.** Fastener\*
- 11.** Flashing\*

\*By Other

# Channeled Insulation Design

## DESIGN CONSIDERATIONS

- For use on above grade vertical walls. System must terminate a minimum of 6" (152 mm) above grade.
- Additives are not permitted for any product unless approved in writing by Sika Facades Technical Service Team.
- All products must be installed at minimum 40 °F (4 °C) ambient and substrate temperatures unless otherwise noted on specific Product Data Sheets.
- Protect all work from precipitation for at least 24-hours after application.
- This system is not designed for horizontal applications. Always maintain a minimum slope of 1:2 up to a maximum width of 12".
- All substrates must be clean, dry and sound without planar irregularities greater than 1/4" per 10' (6 mm per 3 m).

## WARRANTY

Prior to each use of any product of Sika Corporation, its subsidiaries or affiliates ("SIKA"), the user must always read and follow the warnings and instructions on the product's most current product label, Product Data Sheet and Safety Data Sheet which are available at [usa.sika.com/senergy](http://usa.sika.com/senergy) or by calling SIKAFACADES' Technical Service Department at 1-800-589-1336. Nothing contained in any SIKAFACADES literature or materials relieves the user of the obligation to read and follow the warnings and instructions for each SIKAFACADES product as set forth in the current product label, Product Data Sheet and Safety Data Sheet prior to use of the SIKAFACADES product.

SIKAFACADES warrants this product for one year from date of installation to be free from manufacturing defects and to meet the technical properties on the current Product Data Sheet if used as directed within the product's shelf life. User determines suitability of product for intended use and assumes all risks. User's and/or buyer's sole remedy shall be limited to the purchase price or replacement of this product exclusive of any labor costs. NO OTHER WARRANTIES EXPRESS OR IMPLIED SHALL APPLY INCLUDING ANY WARRANTY OF MERCHANTABILITY OR FITNESS FOR A PARTICULAR PURPOSE. SIKAFACADES SHALL NOT BE LIABLE UNDER ANY LEGAL THEORY FOR SPECIAL OR CONSEQUENTIAL DAMAGES. SIKAFACADES SHALL NOT BE RESPONSIBLE FOR THE USE OF THIS PRODUCT IN A MANNER TO INFRINGE ON ANY PATENT OR ANY OTHER INTELLECTUAL PROPERTY RIGHTS HELD BY OTHERS. Sale of SIKAFACADES products are subject to the Terms and Conditions of Sale which are available at [usa.sika.com](http://usa.sika.com).