



# SikaTile®-815 Secure Grout

## HIGH PERFORMANCE, RAPID-SETTING, POLYMER MODIFIED, DUSTLESS GROUT

- Polymer modified for hard, durable, high performing results
- Stain-resistant, color consistent, and efflorescence free
- Dustless formula – provides significantly less dust than ordinary grouts
- Promotes cleaner working conditions by minimizing dust
- Creamier and easier to spread
- Uses less water for consistent hydration and quicker drying
- For grout joints from 1/16" to 1/2" (1.5 to 13 mm)
- Colors: 32 colors - see back for details
- Packaging: 25 lb. bags and 10 lb. bags (3 per carton)

### Standards

- Exceeds ANSI A118.7

### Attributes Include:



**BUILDING TRUST**



# SikaTile®-815 Secure Grout

HIGH PERFORMANCE, RAPID-SETTING, POLYMER MODIFIED, DUSTLESS GROUT

## WHERE TO USE

- For interior and exterior applications in both residential and commercial applications in dry or wet conditions.
- For floors, walls, countertops, and submerged conditions.
- For joint widths from 1/16" (1.5 mm) to 1/2" (13 mm).
- For application in submerged conditions (swimming pools, spas, water features, and fountains), once fully cured (after 21 days).

## SUITABLE TILE TYPES:

- Brick and thin brick
- Cement-based precast terrazzo
- Impervious porcelain and glass tile
- Natural stone tile, granite and slate
- Vitreous, semi-vitreous or non-vitreous tile:
  - Ceramic, mosaic, quarry, cement body tile

## FEATURES AND BENEFITS

- Polymer modified for hard, durable, high performing results
  - Stain-resistant, color consistent, and efflorescence free
  - For 1/16" (1.5 mm) to 1/2" (13 mm) grout joints
  - Easy mixing – just add water, no additives required
  - Rapid-Setting
  - For interior and exterior floors, walls, and countertops
  - Dustless formula – provides significantly less dust than ordinary grouts
  - Promotes cleaner working conditions by minimizing dust
  - Creamier and easier to spread
  - Uses less water for consistent hydration and quicker drying
  - Mold and mildew resistant
- NOTE:** Always refer to Current Product data Sheet and SDS for detailed performance specifications prior to use.

## COLORS AVAILABLE

00525 Black Sapphire



00162 True Taupe



00038 Gray



00340 Shark Fin



00034 River Rock



00035 Natural Gray



00330 Dolphin



00325 Vintage Pewter



00320 Dove Gray



00032 Light Taupe



00030 Silver



00312 Classic Silver



00310 Cloudy Gray



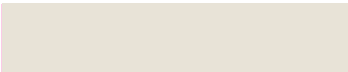
00125 Glacier



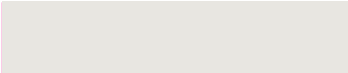
00010 Bright White



00120 Pearl



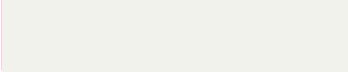
00111 Polar White



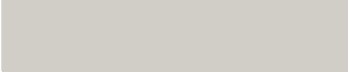
00121 Vanilla



00011 Snow White



00112 Pure White



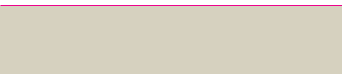
00012 Navajo White



00210 Blanched Almond



00017 Bone



00220 Sand Drift



00018 Cream



00021 Canvas



00230 Baja



00025 Tumbleweed



00153 Buckskin



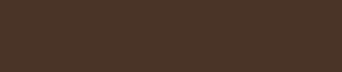
00150 Santa Fe



00191 Terracotta



00175 Dark Chocolate



## COVERAGE

SCAN QR CODE FOR  
SIKATILE® COVERAGE  
CALCULATOR FOR CON-  
SUMPTION INFORMATION  
OF MORE GROUT SOLUTION  
PRODUCTS.



## FOR MORE INFORMATION:

Contact Sika:

Phone 800.933.SIKA(7452)

Website: [www.SikaTile.com](http://www.SikaTile.com)

**Sika Corporation**

201 Polito Avenue

Lyndhurst, NJ 07071

Phone: 201-933-8800

Fax: 201-933-6225

**BUILDING TRUST**

