

Senergy Platinum CI Stucco Ultra

A continuously insulated premium cement plaster stucco system with enhanced water management featuring Senershield air/water-resistive barrier

SYSTEM DESCRIPTION

Senergy Platinum CI Stucco Ultra is an enhanced water management and continuously insulated stucco system offering a variety of rigid insulation board options to optimize thermal performance.

ACCEPTABLE SUBSTRATES

ASTM C1177 type sheathings, including DensGlass™ exterior sheathing, eXP™ sheathing, GlasRoc® sheathing, Securock™ glass-mat sheathing, Weather Defense™ Platinum sheathing, and GreenGlass® sheathing, PermaBase™ cement-board by National Gypsum and other cement-boards (ASTM C1325 Type A Exterior), untreated Exposure I or exterior plywood sheathing (grade C-D or better), Untreated Exposure I OSB, Huber Zip Sheathing (sheathing only), Gypsum sheathing (ASTM C79/ASTM C1396), Poured concrete/unit masonry.

USES

For exterior walls in new and retrofit commercial, institutional and residential construction when a continuous high effective R-value is needed to meet energy or eco-efficiency standards, and/or when a rainscreen is desired or required to satisfy code issues related to drainage.

MATERIAL SUBSTITUTION

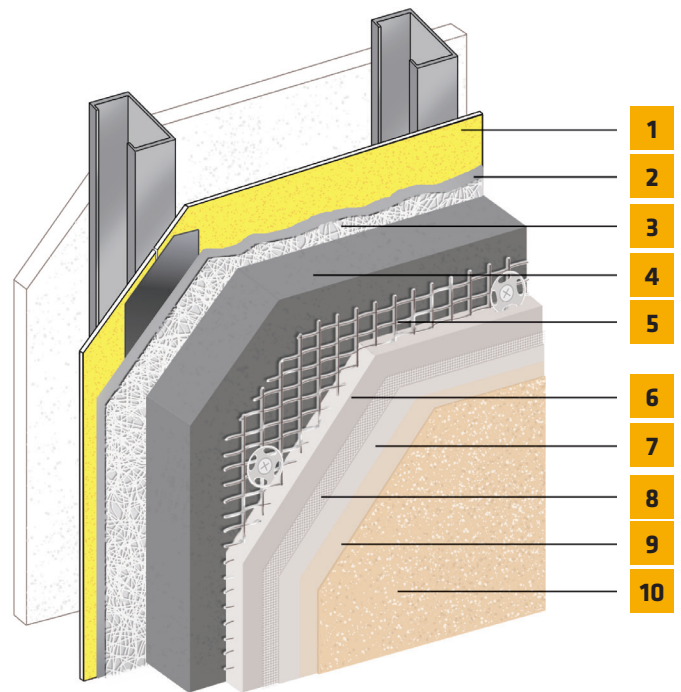
Material substitution will adversely affect system performance and will void all warranty coverage unless approved in writing by Sika Facades.

ENHANCED CRACK RESISTANCE OPTIONS

Good: SikaWall Maxlastic Finish

Better: SikaWall SRT Mesh with Senergy base coat or SikaWall Stucco Surface Leveler

Best: SikaWall SRT Mesh with Senergy base coat or SikaWall Stucco Surface Leveler and SikaWall Maxlastic Finish



1. Acceptable Sheathing*
2. Senershield-R/-RS/-VB
3. SikaWall Drainage Mat
4. Approved Rigid Insulation Board*
5. SikaWall Permalath 1000 or Metal Plaster Base*
6. SikaWall Stucco Base Concentrate or Sanded
7. Senergy Base Coat (Optional)
8. SikaWall SRT Mesh
9. SikaWall Stucco Prime (Optional)
10. Senergy Finish

*By Others

Senergy Platinum CI Stucco Ultra

TEST RESULTS:		
TEST	METHOD	RESULTS
Accelerated weathering	ASTM G153	No deleterious effects after 2000 hours viewed under 5x magnification.
Water Resistance	ASTM D2247	No deleterious effects at 14 day exposure.
Intermediate Scale Multi-story Fire Test	UBC Standard 26-9/NFPA 285	Met test criteria
Radiant heat exposure	NFPA 268	Met test criteria
Surface burning	ASTM E 84	System Components Flame spread <25; Smoke developed <450
Methods for fire tests of building construction and materials	ASTM E119	1 hour rating
Behavior of materials in a vertical tube furnace at 750° C	ASTM E136	SikaWall Stucco Base with SikaWall Permalath 1000 specimens met the weight loss criteria for passing the test.
Drainage efficiency	ASTM E2273	Exceeds 90% minimum
Salt spray resistance	ASTM B117	No deleterious effects at 300 hours exposure period.
Freeze-thaw resistance	AC11	No deleterious effects after 10 cycles viewed under 5x magnification.

ADVANTAGES

- Highly energy efficient, easy to specify design that meets ASHRAE design standards and IGCC/IECC code requirements for the use of continuous insulation.
- Provides a drainage plane for directing incidental moisture out of the wall assembly.
- Fluid applied air/water-resistive barrier provides a durable, seamless secondary moisture protection.
- Three-dimensional SikaWall Drainage Mat provides a drainage plane for maximum drainage and drying performance.
- Seamless wall surface provides high resistance to potential water intrusion from rain and other environmental sources.
- Available SikaWall Permalath 1000 self-furred glass fiber reinforcing lath that will not rust.
- Resistant to impact and punctures; good for high traffic areas.
- Provides design flexibility with numerous design options.

Senergy Platinum CI Stucco Ultra

DESIGN CONSIDERATIONS

- Maximum allowable deflection $L/360$, based on structural properties only.
- The design wind load shall not exceed the system's allowable wind load as stated in applicable code reports.
- Details shall conform with Sika Facades recommendations and shall be consistent with the project requirements.
- Control joints and trim accessories required. Control joint placement is required in the Senergy Platinum CI Stucco Ultra wall system every 144 ft² per ASTM C1063.
- Consult the framing and sheathing manufacturer for design and application considerations.
- Expansion joints are required in the system where they exist in the substrate, where the system adjoins dissimilar construction, at changes in substrates and at floor lines in multilevel wood frame construction.
- System shall terminate at expansion joints.
- Sealant joints shall be detailed and installed per sealant manufacturer's recommendations.
- A minimum 6:12 slope is required on all horizontal surfaces greater than 1".
- Backer rod, sealant and flashing are required at door and window openings.

WARRANTY

Prior to each use of any product of Sika Corporation, its subsidiaries or affiliates ("SIKA"), the user must always read and follow the warnings and instructions on the product's most current product label, Product Data Sheet and Safety Data Sheet which are available at usa.sika.com/senergy or by calling Sika Facades' Technical Service Department at 1-800-589-1336. Nothing contained in any Sika literature or materials relieves the user of the obligation to read and follow the warnings and instructions for each Sika product as set forth in the current product label, Product Data Sheet and Safety Data Sheet prior to use of the Sika product.

SIKA warrants this product for one year from date of installation to be free from manufacturing defects and to meet the technical properties on the current Product Data Sheet if used as directed within the product's shelf life. User determines suitability of product for intended use and assumes all risks. User's and/or buyer's sole remedy shall be limited to the purchase price or replacement of this product exclusive of any labor costs. NO OTHER WARRANTIES EXPRESS OR IMPLIED SHALL APPLY INCLUDING ANY WARRANTY OF MERCHANTABILITY OR FITNESS FOR A PARTICULAR PURPOSE. SIKA SHALL NOT BE LIABLE UNDER ANY LEGAL THEORY FOR SPECIAL OR CONSEQUENTIAL DAMAGES. SIKA SHALL NOT BE RESPONSIBLE FOR THE USE OF THIS PRODUCT IN A MANNER TO INFRINGE ON ANY PATENT OR ANY OTHER INTELLECTUAL PROPERTY RIGHTS HELD BY OTHERS. Sale of Sika products are subject to the Terms and Conditions of Sale which are available at usa.sika.com.