



INDUSTRIAL FLOORING

Sika[®] Ucrete[®]

THE WORLD'S TOUGHEST FLOOR
SINCE 1969

BUILDING TRUST



Sika URETHANE CEMENT SYSTEMS

Why Choose Sika Seamless Flooring?

Sika Ucrete has been performing at the highest levels for over 50 years through its innovative, sustainable, and practical solutions. Sika Ucrete floor systems provide the reassurance of proven performance and a reputation acquired over decades of use in aggressive process environments throughout the food and beverage, pharmaceutical, chemical and engineering industries.

Sika Ucrete sets the benchmark for attractive, heavy-duty industrial flooring. It is quick and straight forward to install, meeting all the needs of the modern processing industry for safety and performance. It is a unique suite of products that enjoys an unequalled reputation for performance, built over five decades of use in some of the processing industry's harshest environments.

The Sika Ucrete Advantage

LONG-TERM PERFORMANCE

There are thousands of 20 - 30 year old Sika Ucrete floors in aggressive environments still in active service.

AESTHETICS

Color-stable and stain-resistant systems are available for applications where appearance, as well as performance, is required.

FAST APPLICATION AND CURING

Even at low temperatures specifications are available that are fully serviceable after only four hours at 50°F, making it ideally suited for refurbishment work.

THERMAL SHOCK RESISTANCE

Withstands spillages up to 302°F depending upon specification.

NON-TAINING

Even during application in food handling areas. Water dispersed formulations are phthalate-free.

MOISTURE TOLERANT

Can be installed onto 7-day-old concrete without the need for special primers, helping to keep fast-track projects on schedule. Specifications are available to enhance to 1-day-old concrete with high-performance polymer modified Sika Ucrete systems.

When used as a base coat or layer for a MVT system, the minimum thickness the Sika Ucrete is 125 mils, prior to the broadcast of any aggregate.

CHEMICAL RESISTANCE

Resistant to strong acids, alkalis, fats, oils and solvents which can rapidly degrade other types of resinous flooring.

CLEAN AND SAFE

For your workers, products and the environment. Certified by LEED and GreenCircle to meet indoor air quality and emissions standards.

HYGIENE

Cleanable to the same standards as stainless steel and does not support biological growth to maintain high sanitation standards.

Not sure which high performing Sika Ucrete floor system is right for your unique inenvironment? Connect with a Sika flooring expert and pick the perfect floor by visiting:

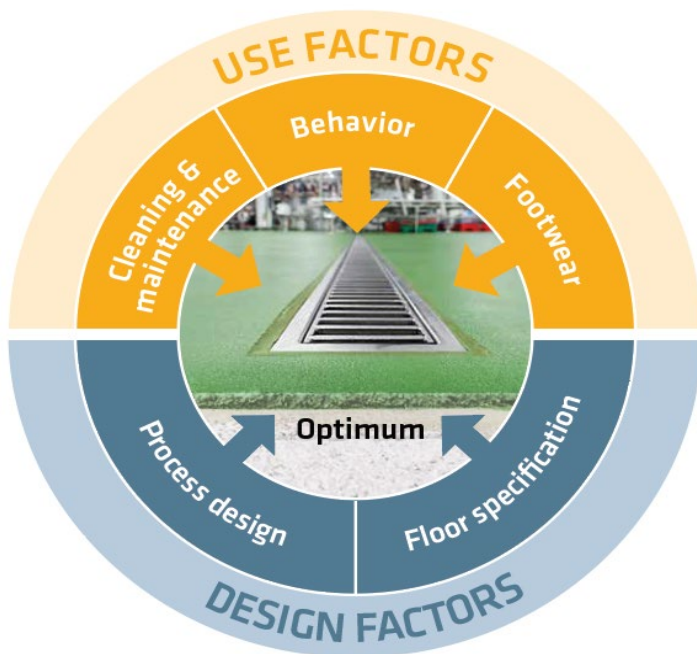


Sika Ucrete Slip-Resistant Flooring

In wet and greasy environments, the correct surface profile is essential to provide a safe and efficient working environment. Sika Ucrete flooring offers a range of surface profiles, from smooth to highly textured surfaces.

ANSI 137.1-2017 and ANSI A326.3 require that floors wet with water have a minimum slip resistance of 0.42 DCOF (Dynamic Coefficient of Friction). Keep in mind that this is a minimum level of slip resistance for level interior floors. Other situations, such as standing water, oil, grease, or other slippery substances, may require higher DCOF numbers which is the decision of the owner. It is also important to point out that a DCOF of 0.42 doesn't necessarily equate to a safe floor; nor does a DCOF below 0.42 indicate a dangerous floor. For instance, A326.3 points out that hard surfaces with a DCOF of less than 0.42 are often used in shopping malls and hotel lobbies, but the materials are kept dry and safe cleaning procedures are used.

SLIP RESISTANCE IS A BALANCE



FLOOR SLOPES

Often, floors will be laid with slopes to allow water and liquid spillages to flow to drains. Free-draining floors require slopes needing a good profile to be safe. Where personnel are required to push bins and racks over a floor with steep or complex slope, the need to try and prevent the load rolling downhill increases.

SLIPS, TRIPS AND FALLS

A holistic approach is required to minimize slips, trips and falls. Engineering solutions to avoid floor contamination, or a change of working practices and procedures, can help as much as cleaning and footwear. A compromise between cleaning and slip resistance is required; smoother floors may call for more frequent cleaning, while rougher floors need more aggressive cleaning.

HYGIENE

There is no need to compromise on aesthetics or hygiene when looking for slip-resistant flooring, Sika Ucrete systems offer profiled floors that can be cleaned to the same standard as stainless steel, with Sika Ucrete color-stable top coat options.

PLANNED CLEANING

A formal cleaning plan should be in place detailing the frequency and type of cleaning required in each location. Floor cleaning should be coordinated with that of plant and equipment, so that residues from plant cleaning are removed promptly and not left to evaporate to dryness on the floor.

CUSTOM TAILORED SOLUTIONS

Not every location will need the same degree of slip resistance. This is why we offer Sika Ucrete with a range of surface profiles to enable the floor to be tailored to meet your needs. For specific advice as to the most appropriate grade of Sika Ucrete for your floors, please contact your local Sika expert for guidance.



Sika Ucrete Chemical-Resistant Flooring

Sika Ucrete floors have excellent resistance to a broad spectrum of chemicals, including many that will rapidly degrade other types of resinous flooring. Sika Ucrete floors are unaffected by those compounds marked 'R' in the table, even after continuous long-term immersion. There are very few chemicals that will degrade Sika Ucrete flooring. These are marked with 'NR' in the table. Sika Ucrete is suitable for use on floors in wet process areas, where chemicals marked 'L' in the table are employed, provided that reasonable standards of cleaning are maintained. Note that if valves or pump seals start to leak they should be addressed, as the leakage results in a continuous immersion environment and surface erosion may occur. Solvents may soften Sika Ucrete on long-term immersion, but Sika Ucrete will often recover when the solvent is removed and the floor is allowed to dry. In practice, most solvents evaporate before they do any damage. A more extensive chemical resistance chart is available upon request.

Discoloration may occur due to salt deposits, contaminants in solvents, strong dyes and strong acids. This does not affect the performance of the floor. Such effects are minimized by good housekeeping, especially if ponding is avoided and spillages are not allowed to evaporate to dryness on the floor. Effective cleaning regimes will enhance the life and appearance of your floor. The use of Sika Ucrete floors with the color-stable top coat, such as Sika Ucrete TCCS, will significantly reduce the amount of staining observed.

Chemical	Concentration %	Rating
Acetaldehyde	100	R
Acetic Acid	10	R
	20	R
	40	R
Acetone	100	L
Adipic Acid	Saturated	R
Amonium Hydroxide	28	R
Aniline	100	R
Antifreeze (Ethylene Glycol)	100	R
Aqua Regina	-	L
Benzene	100	L
Benzoic Acid	100	R
Benzoyl Chloride	100	R
Blood	-	R
Brake Fluid	-	R
Brine	Saturated	R
Butanol	100	R
Calcium Chloride	50	R
Calcium Hypochlorite	Saturated	R
Caprolactam	100	R
Carbon Disulfide	100	L

Chemical	Concentration %	Rating
Carbon Tetrachloride	100	R
Chlorine Water	Saturated	R
Chloroacetic Acid	10	R
Chloroform	100	L
Chromic Acid	20	R
	30	R
Citric Acid	60	R
Copper Sulfate	Saturated	R
Cresols	100	L
Crude Oil	-	R
Cyclohexane	100	R
Decanoic (Capric) Acid	100	R
Diethylene Glycol	100	R
Dimethyl Formamide	100	NR
Ethanol	100	R
Ethyl Acetate	100	L
Ethyl Glycol	100	R
Fats	-	R
	-	R
Formic Acid	40	R
	70	R
Gasoline	-	R
Heptanoic Acid	100	R

Note: Ratings in these tables are at 68°F

Chemical	Concentration %	Rating
Hydrogen Peroxide	30	R
Isopropanol	100	R
Jet Fuel	-	R
Kerosene	-	R
Lactic Acid	25	R
	85	R
	100	R
Lauric Acid	100	R
Maleic Acid	30	R
Maleic Anhydride	100	R
Methacrylic Acid	100	R
Methanol	100	R
Menthylated Spirits	-	R
Methylene Chloride	100	L
Methyl Ethyl Ketone	100	L
Methyl Methacrylate	100	R
Milk	-	R
Mineral Oils	-	R
Motor Oil	-	R
N N-dimethyl Acetamide	100	NR
N-methyl Pyrrolidone	100	NR
Nitric Acid	5	R
	30	R
	65	L
Oleic Acid	100	R
Oleum	-	L
Parafin	-	R
Perchloroethylene	100	R
Phenol	5	L
Phenyl Sulfuric Acid	10	R



Chemical	Concentration %	Rating
Phosphoric Acid	40	R
	50	R
	85	R
Picric Acid	50	R
Propylene Glycol	100	R
Potassium Hydroxide	50	R
Skydol® 500B4	-	R
Skydol® LD4	-	R
Sodium Hydroxide	20	R
	50	R
Sodium Hypochlorite	15	R
Styrene	100	R
Sugar	50	R
Sulfuric Acid	50	R
	98	R
Tetrahydrofuran	100	L
Toluene	100	R
Toluene Sulfonic Acid	100	R
Trichloroacetic Acid	100	L
Turpentine	100	R
Vegetable Oils	-	R
Water (Distilled)	-	R
White Spirit	-	R
Xylene	100	R

For information on a specific chemical or concentration contact Sika Floor Technical Services or your local Sika Floor Sales Representative.

The Right Sika Ucrete System for the Right Environment

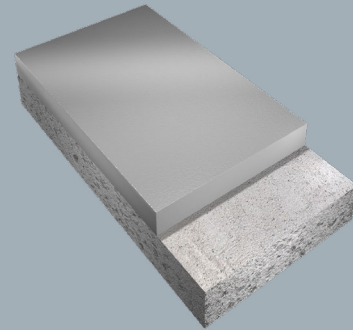
When facility owners, architects and engineers who specified and installed Sika Ucrete in the 1970s and 1980s find that their floors are still in service well into the 21st century, you can understand why they want to specify Sika Ucrete again.

But you don't have to have used Sika Ucrete in the past to be convinced of its performance. You can trust the Sika Ucrete reputation, built up over fifty years and millions of square feet of floors installed for companies large and small in over one hundred countries around the world.

Sika Ucrete TG - HEAVY DUTY, TROWEL GRADE SCREED, 1/4" - 1/2" THICK

Based on Sika Ucrete UD200, a polyurethane cementitious screed with excellent abrasion, impact, chemical attack and thermal shock resistance. It has a smooth, solid color surface.

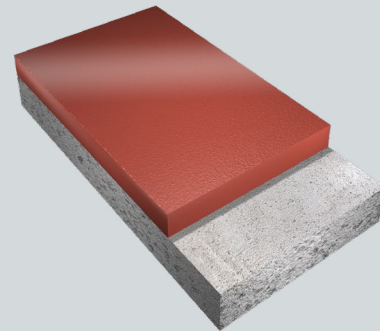
Optional primer and scratch coats are available along with chemical resistant and color-stable top coats.



Sika Ucrete TG SR - SLIP-RESISTANT, TROWEL GRADE SCREED, 1/4" - 1/2" THICK

Based on Sika Ucrete UD200 SR, a polyurethane cementitious screed designed to provide excellent slip resistance and protection from abrasion, impact, chemical attack and thermal shock.

Optional primer and scratch coats are available along with chemical resistant and color-stable top coats.

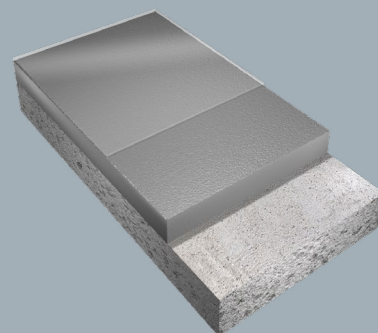


Sika Ucrete SLB+ - SELF-LEVELING BROADCAST URETHANE SLURRY, 3/16" - 1/4" THICK

Based on Sika Ucrete HS22, a heavy duty, solid color, urethane slurry designed to provide excellent resistance to abrasion, impact, chemical attack and thermal shock.

Solid or multi-color quartz blends are broadcast onto the wet screed to provide a decorative finish.

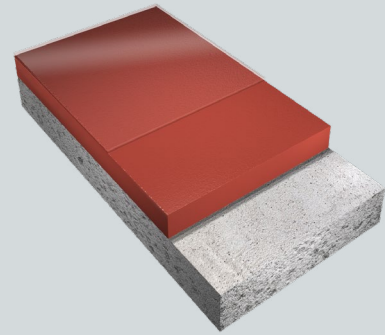
Optional water-based primer and color-stable top coat available.



Sika Ucrete SL+ - GENERAL USE, SELF-LEVELING URETHANE CEMENT SLURRY, 3/16 - 1/4" THICK

Based on Sika Ucrete HS22, a solid color, self-leveling, urethane slurry primarily used to protect concrete substrates in aggressive environments, such as food processing plants, freezers and coolers, chemical process plants and pharmaceutical facilities. It has excellent resistance to abrasion, chemical attack, impact and thermal shock.

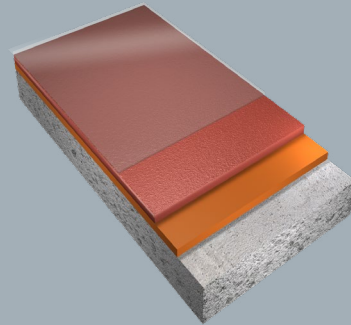
Optional high build primer coat available.



Sika Ucrete SLB - SELF-LEVELING BROADCAST URETHANE MORTAR, 80 - 120 MILS THICK

Based on Sika Ucrete HS24, a state of the art, phthalate-free, water dispersed polyurethane based/cement and aggregate screed with a textured, slip-resistant surface using a urethane top coat for general industrial applications. Solid or multi-color quartz blends are broadcast onto the wet screed to provide a decorative finish.

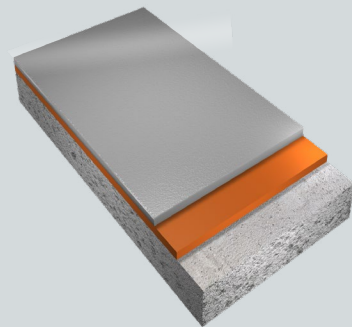
Optional primer and scratch coats are available along with an alternative rapid curing polyaspartic top coat.



Sika Ucrete SL - SELF-LEVELING URETHANE SLURRY, 80 - 160 MILS THICK

Based on Sika Ucrete HS24, a phthalate-free, water dispersed polyurethane cementitious screed designed to be installed as a self-leveling floor topping with an easy to clean smooth surface for general industrial applications. It provides medium slip resistance values and is available in a variety of standard colors.

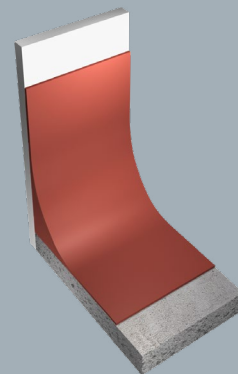
Optional primer and scratch coats are available.



Sika Ucrete RG29 - HIGH STRENGTH CEMENTITIOUS COVING MORTAR

Sika Ucrete RG29 is a vertical grade, solid color, water dispersed polyurethane cementitious mortar used for detailing work and coving. It has a finely textured smooth appearance with excellent resistance to impact, chemical attack and other physical aggression.

It is primarily used for vertical application of coves and cantos on concrete substrates.



SIKA UCRETE COLOR OPTIONS



BLUE



CREAM



GRAY



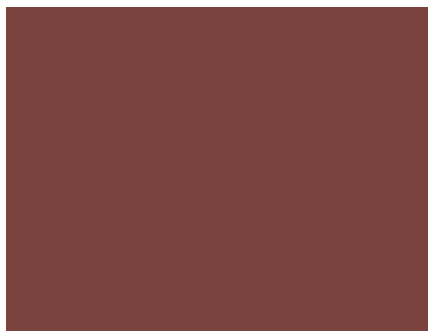
GREEN



GREEN BROWN (CHARCOAL)



LIGHT GRAY



RED

Colors show approximate tone without any texture. The color of the actual products may vary. Make final approval from job site mockup. Gloss level will vary depending on product used. Custom colors available with adequate lead time and minimum batch quantities. Please consult Sika Industrial Flooring for further information and pricing.

WE ARE SIKA

Sika is a specialty chemicals company with a leading position in the development and production of systems and products for bonding, sealing, damping, reinforcing and protecting in the building sector and the motor vehicle industry. Sika's product lines feature concrete admixtures, mortars, sealants and adhesives, structural strengthening systems, industrial flooring as well as roofing and waterproofing systems.



Sika Corporation • Flooring

201 Polito Avenue
Lyndhurst NJ 07071
Tel: 800 933 7452
www.SikaFloorUSA.com

BUILDING TRUST

