

Senergy[®]



SENERFLEX VULCAN NC
CONTINUOUSLY INSULATED
MINERAL WOOL SYSTEM

BUILDING TRUST



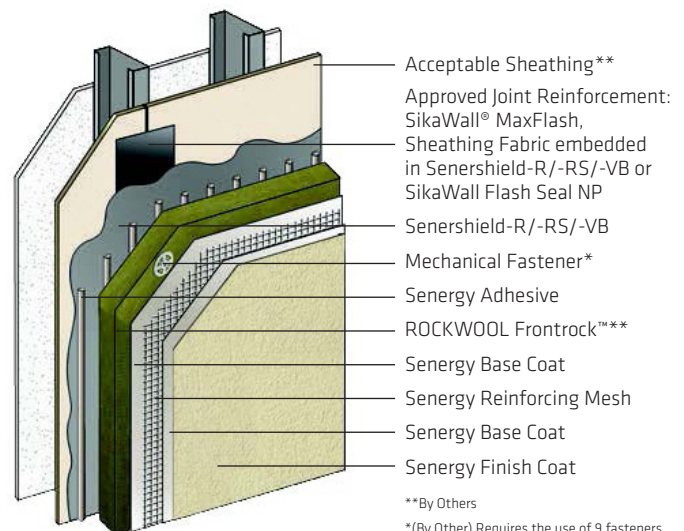
SENERFLEX VULCAN NC

SENERFLEX® VULCAN NC is a continuously insulated, water-drainage wall cladding. The system utilizes ROCKWOOL Frontrock™ insulation and Senergy Senershield® fluid-applied air/water-resistive barrier that provides continuous air and moisture protection.

| CODE COMPLIANCE | |
|---------------------------------|---|
| Document | Code Description |
| ICC-ESR 1878 | Complies with IBC and IRC |
| ASTM E2568 / AC 235 | Complies with requirements |
| ASTM E119 | Does not detract from fire rating of base wall |
| ICC-ESR 2986 (Senershield-R/RS) | Air/water-resistive barrier* |
| NFPA 285/268 | Meets requirements for use on fire-resistance-rated construction type, including IBC Types I through VC |
| ASTM E136 | Insulation defined as non-combustible |
| ASTM C612 | ROCKWOOL insulation is compliant for mineral fiber block and board thermal insulation |

For testing results, please reference Senerflex Vulcan NC specification

*Senershield-R/-RS/-VB can be used behind all claddings where more than one wall system is specified, creating one continuous AWRB system. This is appropriate whenever Senergy Senerflex Vulcan NC is used with other cladding types on a multi-clad building.



**By Others

*(By Other) Requires the use of 9 fasteners per board; 4 through the insulation, 5 through the reinforced base coat. Refer to the Technical Bulletin; Senerflex Vulcan NC Installation Guide for full installation details.



SENERFLEX VULCAN NC ADVANTAGES

SENERFLEX VULCAN NC wall system incorporates ROCKWOOL Frontrock™ continuous insulation, air/water-resistive barrier and drainage for optimum heat, air and moisture control with virtually unlimited aesthetic versatility, all covered under a single-source manufacturer warranty.

By featuring **ROCKWOOL FRONTROCK™** insulation –engineered for EIFS applications – the system delivers superior fire performance, and contributes toward improved energy efficiency, thermal comfort, moisture control, and acoustic performance.



FIRE RESISTANCE

Noncombustible, Class A per ASTM E84, stone wool EIFS permits use in non-loadbearing fire-resistance-rated construction and IBC Type I through V, without height or setback limitations



THERMAL PERFORMANCE

ROCKWOOL Frontrock™ provides a stable R4 per inch and maintains its thermal performance over the lifetime of the building, with system designs up to R16 continuous insulation



MOISTURE MANAGEMENT

Water repellent and vapor open, contributes toward EIFS that allow for a high degree of drying potential and meets industry standard for drainage efficiency (ASTM E2273)



ACOUSTICS

Improved acoustic dampening for a quieter environment, particularly for new and retrofit construction in urban environments, tested in accordance with ASTM E1332



DURABILITY

Provides a stable substrate without causing undesirable stress on the EIFS lamina and impact resistance that meets or exceeds industry standards (ASTM E2486)

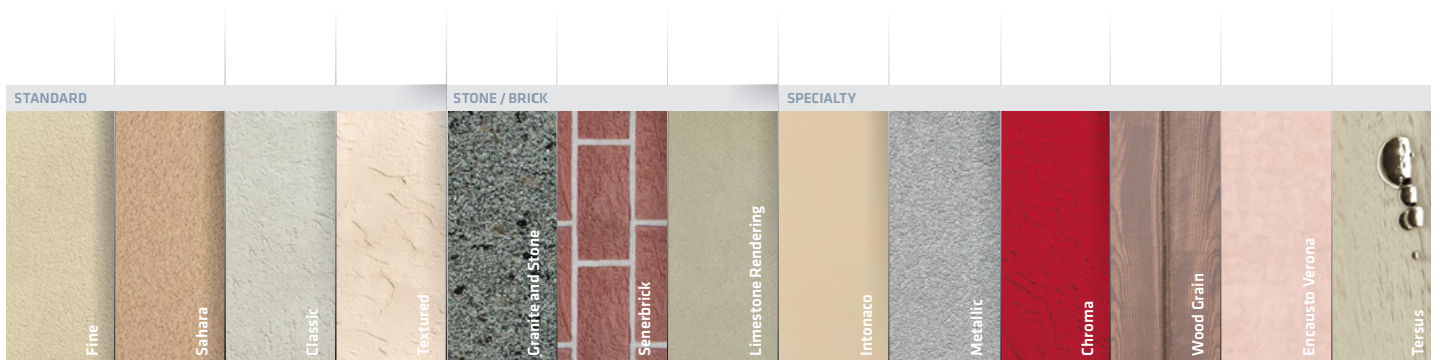


BY NATURE

Manufactured from one of the world's most abundant raw materials without the use of blowing agents or toxic flame retardants, EIFS with stone wool contributes toward LEED credits for your project

DESIGN FLEXIBILITY

- ✓ Access to Senergy's portfolio of standard and specialty finishes
- ✓ Senergy Senerflex Vulcan NC offers a non-combustible alternative to foam plastic insulation-based systems





Our most current General Sales Conditions shall apply.
Please consult the Data Sheet prior to any use and processing

© 2024 Sika Corporation, 14000831 rev 09/2024

Sika Corporation

201 Polito Avenue
Lyndhurst, NJ 07071 USA
Customer Service (800) 433-9517
Technical Service (800) 243-6739
usa.sika.com/senergy

BUILDING TRUST

