

SYSTEM DATA SHEET

PAREX® ACF CMU

Architectural Coatings & Finish System for Masonry

PRODUCT DESCRIPTION

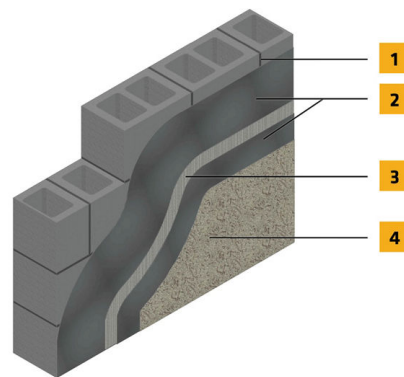
PAREX® ACF CMU is for buildings that make use of CMU or other forms of block construction ACF Masonry is an assembly to enhance the aesthetic appeal of concrete masonry.

USES

PAREX® ACF CMU application of the Parex Architectural Finish System over concrete, brick and concrete masonry units (CMU) walls.

CHARACTERISTICS / ADVANTAGES

- Add aesthetics to masonry walls
- Simple system composition
- High Traffic resistance options



1. Acceptable Substrate*
2. Parex Base Coat
3. Parex Reinforcing Mesh (Optional)
4. Parex Finish

*By Others

SYSTEM INFORMATION

Compatibility

Material substitution will adversely affect system performance and will void all warranty coverage unless approved in writing by Sika Facades Technical Service Team.

APPLICATION INFORMATION

Substrates

Acceptable Substrates:
Concrete & Concrete Masonry

BASIS OF PRODUCT DATA

Results may differ based upon statistical variations depending upon mixing methods and equipment, temperature, application methods, test methods, actual site conditions and curing conditions.

LIMITATIONS

- **Users must read the most current Product Data Sheets for each system component before using any products and follow all application instructions and cautions.**
- For use on above grade vertical walls. System must terminate a minimum of 6" (152 mm) above grade.
- Additives are not permitted for any product unless approved in writing by Sika Facades Technical Service Team.
- All products must be installed at minimum 40 °F (4 °C) ambient and substrate temperatures unless otherwise noted on specific Product Data Sheets.
- Protect all work from precipitation for at least 24-hours after application.
- This system is not designed for horizontal applications. Always maintain a minimum slope of 1:2 up to a maximum width of 12".
- All substrates must be clean, dry and sound without planar irregularities greater than 1/4" per 10' (6 mm per 3 m).
- Contact Sika Facades' Technical Service Department at 1-800-226-2424 for additional information.

ENVIRONMENTAL, HEALTH AND SAFETY

For further information and advice regarding transportation, handling, storage and disposal of chemical products, user should refer to the actual Safety Data Sheets containing physical, environmental, toxicological and other safety related data. User must read the current actual Safety Data Sheets before using any products. In case of an emergency, call CHEMTREC at 1-800-424-9300, International 703-527-3887.

LEGAL DISCLAIMER

- **KEEP CONTAINER TIGHTLY CLOSED**
- **KEEP OUT OF REACH OF CHILDREN**
- **NOT FOR INTERNAL CONSUMPTION**

- **FOR INDUSTRIAL USE ONLY**
- **FOR PROFESSIONAL USE ONLY**

Prior to each use of any product of Sika Corporation, its subsidiaries or affiliates ("SIKA"), the user must always read and follow the warnings and instructions on the product's most current product label, Product Data Sheet and Safety Data Sheet which are available at usa.sika.com or by calling Sika's Technical Service Department at 1-800-933-7452. Nothing contained in any SIKA literature or materials relieves the user of the obligation to read and follow the warnings and instructions for each SIKA product as set forth in the current product label, Product Data Sheet and Safety Data Sheet prior to use of the SIKA product.

SIKA warrants this product for one year from date of installation to be free from manufacturing defects and to meet the technical properties on the current Product Data Sheet if used as directed within the product's shelf life. User determines suitability of product for intended use and assumes all risks. User's and/or buyer's sole remedy shall be limited to the purchase price or replacement of this product exclusive of any labor costs. **NO OTHER WARRANTIES EXPRESS OR IMPLIED SHALL APPLY INCLUDING ANY WARRANTY OF MERCHANTABILITY OR FITNESS FOR A PARTICULAR PURPOSE. SIKA SHALL NOT BE LIABLE UNDER ANY LEGAL THEORY FOR SPECIAL OR CONSEQUENTIAL DAMAGES. SIKA SHALL NOT BE RESPONSIBLE FOR THE USE OF THIS PRODUCT IN A MANNER TO INFRINGE ON ANY PATENT OR ANY OTHER INTELLECTUAL PROPERTY RIGHTS HELD BY OTHERS.**

Sale of SIKA products are subject to the Terms and Conditions of Sale which are available at <https://usa.sika.com/en/group/SikaCorp/termsandconditions.html> or by calling 1-800-933-7452.

SIKA warrants this product for one year from date of installation to be free from manufacturing defects and to meet the technical properties on the current Product Data Sheet if used as directed within the product's shelf life. User determines suitability of product for intended use and assumes all risks. User's and/or buyer's sole remedy shall be limited to the purchase price or

replacement of this product exclusive of any labor costs.
NO OTHER WARRANTIES EXPRESS OR IMPLIED SHALL
APPLY INCLUDING ANY WARRANTY OF
MERCHANTABILITY OR FITNESS FOR A PARTICULAR
PURPOSE. SIKA SHALL NOT BE LIABLE UNDER ANY LEGAL
THEORY FOR SPECIAL OR CONSEQUENTIAL DAMAGES.
SIKA SHALL NOT BE RESPONSIBLE FOR THE USE OF THIS
PRODUCT IN A MANNER TO INFRINGE ON ANY PATENT
OR ANY OTHER INTELLECTUAL PROPERTY RIGHTS HELD
BY OTHERS. Sale of SIKA products are subject to the
Terms and Conditions of Sale which are available at
usa.sika.com.

Sika Corporation

201 Polito Avenue
Lyndhurst, NJ 07071
Phone: +1-800-933-7452
Fax: +1-201-933-6225
usa.sika.com



System Data Sheet

PAREX® ACF CMU
June 2025, Version 01.01
021830950000242580

PAREXACFCMU-en-US-(06-2025)-1-1.pdf

