

SYSTEM DATA SHEET

PAREX® MVS CMU

Masonry Veneer System for Concrete and Masonry

PRODUCT DESCRIPTION

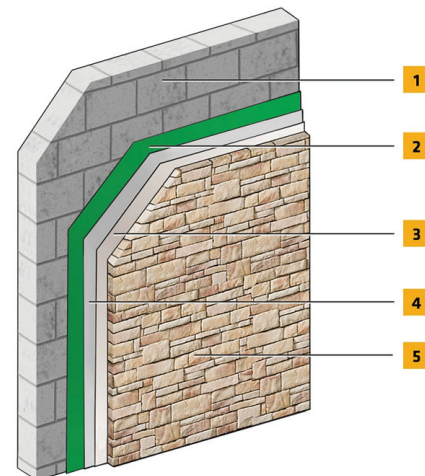
PAREX® MVS CMU for Concrete and Masonry Units is a weather resistant surfacing system incorporating Parex Weatherblock VB AB fluid applied air/water-resistive barrier and Parex Masonry Veneer Adhesive - a specially formulated high-strength setting bed mortar used to adhere natural and manufactured stone, tile, and thin brick veneer.

USES

For exterior walls in new or retrofit commercial, institutional and residential construction such as hotels, hospitals, retail, schools, multifamily apartments and condominiums, and government facilities.

CHARACTERISTICS / ADVANTAGES

- Non-combustible construction types
- Fire resistance rated wall
- Replicate look of stone



1. Acceptable Substrate*
2. Parex WeatherBlock VB AB (optional)
3. Parex Masonry Veneer Adhesive
4. Skim Coat of Parex Masonry Veneer Adhesive
5. Adhered Veneer*

*By Others

SYSTEM INFORMATION

Compatibility

Material substitution will adversely affect system performance and will void all warranty coverage unless approved in writing by Sika Facades Technical Service Team.

APPLICATION INFORMATION

Substrates

Acceptable Substrates

Concrete Masonry Units (excluding fluted block; split faced block should be assessed on project by project basis)
Brick
Concrete walls

BASIS OF PRODUCT DATA

Results may differ based upon statistical variations depending upon mixing methods and equipment, temperature, application methods, test methods, actual site conditions and curing conditions.

LIMITATIONS

- **Users must read the most current Product Data Sheets for each system component before using any products and follow all application instructions and cautions.**
- Painted and otherwise coated surfaces should be inspected and prepared as approved by Sika Facades before application.
- Ensure substrate is free of all form releasing agents or other residue. The applicator shall verify that the proposed substrate is acceptable prior to the PAREX® MVS CMU installation.
- Reference system specification for testing information.
- When used on retention wall or areas where moisture may accumulate or enter the opposite side of the wall, a waterproofing material is required on the opposite side of the wall to eliminate negative hydrostatic pressure.
- Ensure tops of walls are capped or otherwise properly protected.
- Locate joints in adhered veneer above joints in CMU or concrete substrates and where indicated by design professional.
- Contact Sika Facades' Technical Service Department at 1-800-226-2424 for additional information.

ENVIRONMENTAL, HEALTH AND SAFETY

For further information and advice regarding transportation, handling, storage and disposal of Sika Corporation products, user should refer to the actual Safety Data Sheets containing physical, environmental, toxicological and other safety related data. User must read the current actual Safety Data Sheets before using any products. In case of an emergency, call CHEMTREC at 1-800-424-9300, International 703-527-3887.



System Data Sheet
PAREX® MVS CMU
June 2025, Version 01.01
021830950000242569

LEGAL DISCLAIMER

- **KEEP CONTAINER TIGHTLY CLOSED**
- **KEEP OUT OF REACH OF CHILDREN**
- **NOT FOR INTERNAL CONSUMPTION**
- **FOR INDUSTRIAL USE ONLY**
- **FOR PROFESSIONAL USE ONLY**

Prior to each use of any product of Sika Corporation, its subsidiaries or affiliates ("SIKA"), the user must always read and follow the warnings and instructions on the product's most current product label, Product Data Sheet and Safety Data Sheet which are available at usa.sika.com or by calling Sika's Technical Service Department at 1-800-933-7452. Nothing contained in any SIKA literature or materials relieves the user of the obligation to read and follow the warnings and instructions for each SIKA product as set forth in the current product label, Product Data Sheet and Safety Data Sheet prior to use of the SIKA product.

SIKA warrants this product for one year from date of installation to be free from manufacturing defects and to meet the technical properties on the current Product Data Sheet if used as directed within the product's shelf life. User determines suitability of product for intended use and assumes all risks. User's and/or buyer's sole remedy shall be limited to the purchase price or replacement of this product exclusive of any labor costs. **NO OTHER WARRANTIES EXPRESS OR IMPLIED SHALL APPLY INCLUDING ANY WARRANTY OF MERCHANTABILITY OR FITNESS FOR A PARTICULAR PURPOSE. SIKA SHALL NOT BE LIABLE UNDER ANY LEGAL THEORY FOR SPECIAL OR CONSEQUENTIAL DAMAGES. SIKA SHALL NOT BE RESPONSIBLE FOR THE USE OF THIS PRODUCT IN A MANNER TO INFRINGE ON ANY PATENT OR ANY OTHER INTELLECTUAL PROPERTY RIGHTS HELD BY OTHERS.**

Sale of SIKA products are subject to the Terms and Conditions of Sale which are available at <https://usa.sika.com/en/group/SikaCorp/termsandconditions.html> or by calling 1-800-933-7452.

PAREXMVSCMU-en-US-(06-2025)-1-1.pdf

