

## Sentry Stucco Ultra Wall System

A premium cement plaster stucco system with enhanced water management featuring Senersshield-R/-RS/-VB air/water-resistive barrier.

### SYSTEM DESCRIPTION

Senergy Sentry Stucco Ultra is an enhanced water management stucco system that offers design flexibility and aesthetic appeal. It utilizes Senergy Senersshield liquid applied air/water-resistive barriers and SikaWall Drainage Mat DF to provide a premium level of protection of the sheathing and cavity against moisture and air intrusion. Optional Senergy base coat and reinforcing mesh and/or elastomeric finish are available for superior crack suppression.

### USES

New or retrofit residential, institutional and commercial construction such as hotels, hospitals, retail centers, schools, multi-family apartments and condominiums, and government facilities. May be used in fire-resistance-rated construction and in any construction type, including IBC Types I through V, when installed in accordance with Senergy's instructions.

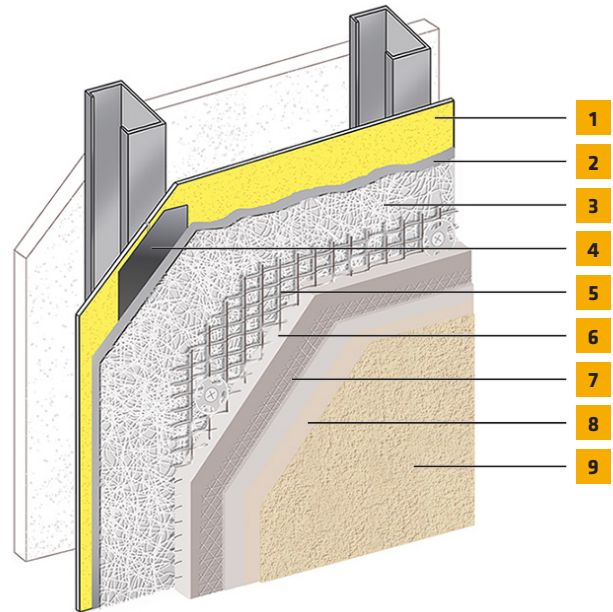
### ACCEPTABLE SUBSTRATES

Poured concrete/unit masonry; ASTM C1177 type sheathings, including DensGlass™ exterior sheathing, DensElement (sheathing only), eXP™ sheathing, GlasRoc® sheathing, Securock™ glass-mat sheathing, Weather Defense™ Platinum sheathing, GreenGlass® sheathing; cement-boards (ASTM C1325 Type A Exterior) including PermaBase™ cement-board; untreated Exposure I or exterior plywood sheathing (grade C-D or better); untreated Exposure I OSB, Huber Zip (sheathing only); Fire Treated wood sheathing; Pyro-Guard® and Dricon® plywood and FlameBlock® OSB; gypsum sheathing (ASTM C79/ASTM C1396).

### CODE COMPLIANCE

Document	Description
CCRR-0230 - System Report	Complies with IBC, IRC and Florida Building Code.
CCRR-0249 - Permalath 1000 Report	Complies with IBC, IRC and Florida Building Code.
ICC-ESR 2986 (Senersshield-R/-RS)	Air/water-resistive barrier*
Air Barrier Association of America recognized (Senersshield-R/-VB)	Can be used on projects where ABAA recognized air barriers are specified

\*Senersshield-R/-RS/-VB can be used behind all claddings where more than one wall system is specified, creating one continuous AWRB system. This is appropriate whenever Senergy Sentry Stucco Ultra is used with other cladding types on a multi-clad building.



1. Acceptable substrate\*
2. Senersshield-R/-RS/-VB
3. SikaWall Drainage Mat DF
4. Approved Joint Reinforcement: SikaWall MaxFlash, SikaWall Sheathing Fabric embedded in Senersshield-R/-RS/-VB or SikaWall Flash Seal NP
5. SikaWall Permalath 1000 or Metal Plaster Base\*
6. SikaWall Stucco Base
7. Senergy Crack Suppression: Flexguard 4 or SikaWall SRT Mesh embedded in Senergy Base Coat or SikaWall Stucco Surface Leveler (Optional)
8. SikaWall Stucco Primer (Optional)
9. Senergy Finish

\*By Others

### ENHANCED CRACK RESISTANCE OPTIONS

Good: SikaWall Maxlastic Finish

Better: SikaWall SRT Mesh with Senergy base coat or SikaWall Stucco Surface Leveler

Best: SikaWall SRT Mesh with Senergy base coat or SikaWall Stucco Surface Leveler and SikaWall Maxlastic Finish.

# Sentry Stucco Ultra Wall System

## DESIGN CONSIDERATIONS

- Fluid applied air/water-resistive barrier provides a durable, seamless secondary moisture protection.
- Three-dimensional SikaWall Drainage Mat DF provides a drainage plane for maximum drainage and drying performance.
- SikaWall PermaLath 1000 self-furred glass fiber reinforcing lath that will not rust.
- Factory prepared SikaWall Stucco Base minimizes potential site mixing errors; improves quality control and provides a single source warranty.
- Senergy acrylic modified base coat over StuccoBase enhances water resistance performance and finish coat aesthetics.
- Elastomeric finish coat bridges hairline cracks and reinforcing mesh option further enhances crack suppression.
- Resistant to impact and punctures; good for high traffic areas.
- Use only for above grade vertical walls. Not for use below grade or on surfaces subject to continuous or intermittent immersion in water or hydrostatic pressure. System must terminate a minimum of 4" above raw earth and 2" above paved surfaces.
- Wide selection of finish textures, standard and unlimited custom color provides design flexibility with numerous design options.

## MATERIAL SUBSTITUTION

Material substitution will adversely affect system performance and will void all warranty coverage unless approved in writing by Sika Facades' Technical Service.

## System and Component Performance

Test	Method	Criteria	Results
Freeze-thaw Resistance	Per ICC-ES acceptance criteria AC-11	No sign of deleterious effects after 10 cycles.	SikaWall Stucco Base passed with no visible evidence of deterioration when examined under 5x magnification.
Water Vapor Transmission	ASTM E96-Wet Cup	Report Value	SikaWall Stucco Base 20.4 perms
Racking Load Test	ASTM E72	Report Value	Maximum load resistance 530 pounds (250 kg)
Compressive Strength	ASTM C109	Report Value	3245 psi (22.4 MPa) average for SikaWall Stucco Base
Flexural Strength	ASTM C348	Report Value	663 psi (4.57 MPa) average for SikaWall Stucco Base
Surface Burning	ASTM E84	Report Value	<25 Flame Spread <450 Smoke Developed Includes SikaWall Permalath 1000, SikaWall Stucco Base and Senergy Finishes
Non-Combustibility	ASTM E136	No flaming, excess temperature rise or weight loss when exposed to 1382°F (750°C)	Pass SikaWall Stucco Base with Permalath 1000 or metal plaster base
Fire Resistance Rated Assemblies	ASTM E119	No transmission of heat greater than 250°F above ambient; no passage of flame or hot gasses; no passage of water from hose stream test; for load bearing walls – ability to withstand load under test conditions.	1 Hour Rated Assemblies <sup>1</sup> : <ul style="list-style-type: none"> <li>• Load bearing wood stud wall with 7/16" (10.9 mm) OSB and 3/8" (9.5 mm) SikaWall Stucco Base</li> <li>• Load bearing wood stud wall with 5/8" (16 mm) Type X gypsum sheathing and 3/8" (9.5 mm) SikaWall Stucco Base</li> <li>• Load bearing wood stud wall with 7/16" (10.9 mm) OSB, SikaWall Permalath 1000 &amp; 1/2" (12.7 mm) Stucco Base (from inside only)</li> <li>• Non-load bearing steel framed wall with 5/8" (16 mm) Type X gypsum sheathing, SikaWall Permalath 1000 &amp; 1/2" (12.7 mm) Stucco Base</li> </ul>

Reference Intertek Evaluation Reports CCRR-0230 and CCRR-0249.  
For additional testing reference Sentry Stucco Ultra Specification.

# Sentry Stucco Ultra Wall System

## WARRANTY

Prior to each use of any product of Sika Corporation, its subsidiaries or affiliates ("SIKA"), the user must always read and follow the warnings and instructions on the product's most current product label, Product Data Sheet and Safety Data Sheet which are available at [usa.sika.com/senergy](http://usa.sika.com/senergy) or by calling SIKAFacades' Technical Service Department at 1-800-589-1336. Nothing contained in any SIKAliterature or materials relieves the user of the obligation to read and follow the warnings and instructions for each SIKAPRODUCT as set forth in the current product label, Product Data Sheet and Safety Data Sheet prior to use of the SIKAPRODUCT.

SIKA warrants this product for one year from date of installation to be free from manufacturing defects and to meet the technical properties on the current Product Data Sheet if used as directed within the product's shelf life. User determines suitability of product for intended use and assumes all risks. User's and/or buyer's sole remedy shall be limited to the purchase price or replacement of this product exclusive of any labor costs. NO OTHER WARRANTIES EXPRESS OR IMPLIED SHALL APPLY INCLUDING ANY WARRANTY OF MERCHANTABILITY OR FITNESS FOR A PARTICULAR PURPOSE. SIKASHALL NOT BE LIABLE UNDER ANY LEGAL THEORY FOR SPECIAL OR CONSEQUENTIAL DAMAGES. SIKASHALL NOT BE RESPONSIBLE FOR THE USE OF THIS PRODUCT IN A MANNER TO INFRINGE ON ANY PATENT OR ANY OTHER INTELLECTUAL PROPERTY RIGHTS HELD BY OTHERS. Sale of SIKAPRODUCTS are subject to the Terms and Conditions of Sale which are available at [usa.sika.com](http://usa.sika.com).