



Sikafloor[®] Pronto[®]

MMA Floor Systems

BUILDING TRUST



SIKAFLOOR® PRONTO® SYSTEMS

Why Choose Sika Pronto MMA Flooring?

With over 100 years experience in high performance technology, Sika is the world's leading manufacturers of industrial and commercial MMA resin flooring systems. We have engineered an extensive range of MMA (methyl-methacrylate) based floor coatings that are designed for use on cementitious substrates as a patching and repair mortar. MMA resins produce a wide range of hardnesses and flexibility and offer superior leveling properties. Offering protection against chemical, mechanical and slip resistance, Sikafloor MMA systems provide the ideal finish for your next industrial, commercial or decorative project.



The Sikafloor Pronto Advantage

- Full cure in less than one hour to minimize downtime and associated expenses
- Ultra-hygienic, NSF registered
- Permanently bonds to the concrete substrate
- Multiple levels of slip resistance available
- Wide range of color, quartz or flake options
- Low temperature cure down to -20°F (-29°C)
- Thermal expansion properties similar to concrete
- Solvent-free, VOC compliant

What Is MMA?

Methyl-Methacrylate (MMA) reactive resins are based on acrylic and methacrylic acid esters, which enable fast and efficient curing. Acrylic chemistry is commonly used to create products like house paints, eyeglass lenses, dental materials, even medical implants.

When used in flooring, the cured resins are inherently UV stable and resistant to a variety of chemicals and caustic materials. MMA resinous flooring chemistry produces systems and products that meet a wide variety of technical and design criteria: durability, time savings, reduced life cycle costs, ease of maintenance, versatility and aesthetics.

Sikafloor Pronto flooring systems offer many different degrees of slip resistance for protection against slips and falls. Many color options are available in tintable binders, quartz or flake systems. Broadcast, roll-on or trowel-on systems are also available, depending on the unique needs of each facility.

MMA has a distinct odor that is present even at extremely low concentrations that are well below OSHA limits. MMA can be an irritant, but is not a sensitizer, so worker health and safety issues are greatly reduced compared with other flooring technologies. The odor quickly dissipates when the curing process is complete. MMA resins are VOC compliant to indoor air quality regulations such as CDPH v1.2.

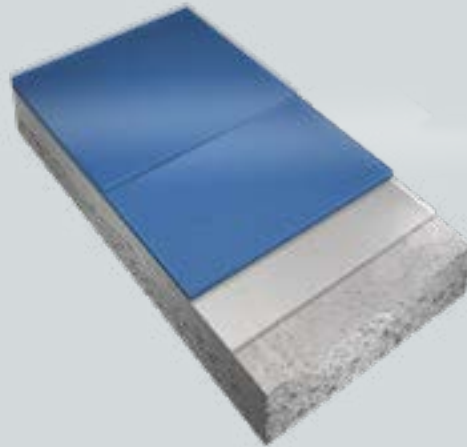
Where this odor is a concern, our factory-trained applicators have the necessary equipment to ventilate areas and remove vapors to contain this odor. Sikafloor Pronto MMA systems have been installed everywhere from hospital operating rooms, commercial kitchens and 24-hour grocery chains by employing these techniques.



Sikafloor Pronto RB-1820 CP - PIGMENTED MMA COATING SYSTEM

Sikafloor® Pronto RB-1820 CP is a roll-applied coating system with a pigmented smooth or slip-resistant surface. It has excellent chemical and UV resistance for long-lasting color performance. Use examples include Industrial/warehouse, grocery stores and high pedestrian traffic areas.

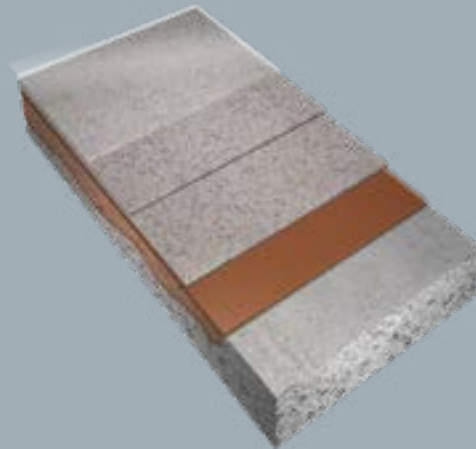
- Sikafloor-41 P Pronto primer with Sikafloor -131 IN Pronto additive
- Sikafloor-61 BC Pronto body coat with Sikafloor PGM 155 Pronto pigment with Sikadur aggregate random broadcast
- Sikafloor-53 TC Pronto top coat



Sikafloor Pronto RB-1823 CQ - QUARTZ BROADCAST MMA COATING SYSTEM

Sikafloor Pronto RB-1823 CQ is a self-leveling flooring system for use in areas that require a flexible system able to withstand operating temperatures found in freezers, coolers and cold warehousing. It can be installed at temperatures down to -20° F (-29° C).

- Sikafloor-51 P Pronto primer with Sikafloor-101 AC Pronto additive
- Sikafloor-40 BC Pronto body coat with Sikafloor PGM 155 Pronto pigment and Sikafloor Pronto Decorative Quartz
- Sikafloor-40 BC Pronto grout coat
- Sikafloor-40 BC Pronto top coat



Sikafloor Pronto RB-1841 CF - FLAKE BROADCAST MMA COATING SYSTEM

Sikafloor Pronto RB-1841 CF is a self-leveling, flexible flooring system for use in areas that require a quick curing, decorative floor. This is an impervious, seamless flooring system, where dirt and spills will remain on the surface and are easily removed by most regular cleaning procedures.

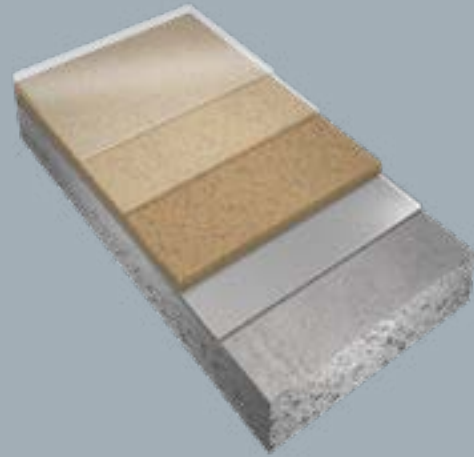
- Sikafloor-41 P Pronto primer with Sikafloor-103 IN Pronto additive
- Sikafloor-40 BC Pronto body coat with Sikafloor PGM 155 Pronto pigment and Sikafloor Pronto Decorative Flake broadcast
- Sikafloor-40 BC Pronto grout coat
- Sikafloor-71 TC Pronto top coat



Sikafloor Pronto RB-1843 CQ - QUARTZ BROADCAST MMA COATING SYSTEM

Sikafloor Pronto RB-1843 CQ is a self-leveling, flexible flooring system for use in areas that require a quick curing, decorative floor. The quick installation process makes this flooring system ideal for restaurants, public assembly facilities or processing facilities.

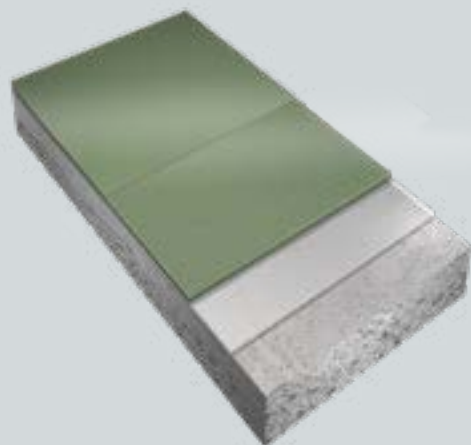
- Sikafloor-41 P Pronto primer with Sikafloor -103 IN Pronto additive
- Sikafloor-40 BC Pronto body coat with Sikafloor PGM 155 Pronto pigment and Sikafloor Pronto Decorative Quartz aggregate
- Sikafloor-71TC Pronto grout coat
- Sikafloor-71TC Pronto top coat



Sikafloor Pronto RB-1845 CP - PIGMENTED, SELF-LEVELING MMA COATING

Sikafloor Pronto RB-1845 CP is a pigmented, self-leveling, flexible flooring system with a smooth or slip-resistant surface. It has excellent chemical and UV resistance for long-lasting color retention. It is a seamless, impervious floor system that is easy to clean and maintain.

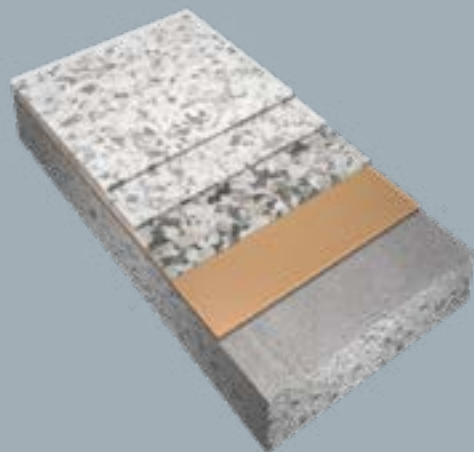
- Sikafloor-41 P Pronto Primer with Sikafloor-103 IN Pronto Additive
- Sikafloor-40BC Pronto body coat with Sikafloor PGM 155 Pronto pigment and Sikadur 509 coarse broadcast aggregate
- Sikafloor-53TC Pronto top coat



Sikafloor Pronto RB-1851 CF - FLAKE BROADCAST MMA COATING SYSTEM

Sikafloor Pronto RB-1851 CF is a flexible self-leveling system with a decorative flake broadcast. It is a seamless, impervious floor system that is easy to clean and maintain. It is also UV-resistant for long term color performance.

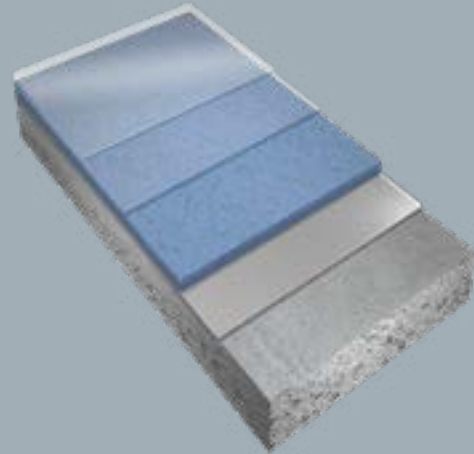
- Sikafloor-41 P Pronto primer with Sikafloor-103 IN Pronto additive
- Sikafloor-61 BC Pronto body coat with Sikafloor PGM 155 Pronto pigment and Sikafloor Pronto Decorative Flake
- Sikafloor-71 TC Pronto grout coat
- Sikafloor-71 TC Pronto top coat



Sikafloor Pronto RB-1853 CQ - QUARTZ BROADCAST MMA COATING SYSTEM

Sikafloor Pronto RB-1853 CQ is a self-leveling floor system with decorative quartz broadcast. Its unique chemistry provides a full cure in one hour or less for each component and provides a permanent chemical bond between each coat. It has a slip-resistant surface to meet ADA requirements.

- Sikafloor-41 P Pronto primer with Sikafloor-103 IN additive
- Sikafloor-61 BC Pronto body coat with Sikafloor PGM 155 Pronto pigment and Sikafloor Pronto Decorative Quartz aggregate
- Sikafloor-71 TC Pronto grout coat
- Sikafloor-71 TC Pronto top coat



Sikafloor Pronto RB-1855 CP - PIGMENTED, SELF-LEVELING MMA COATING

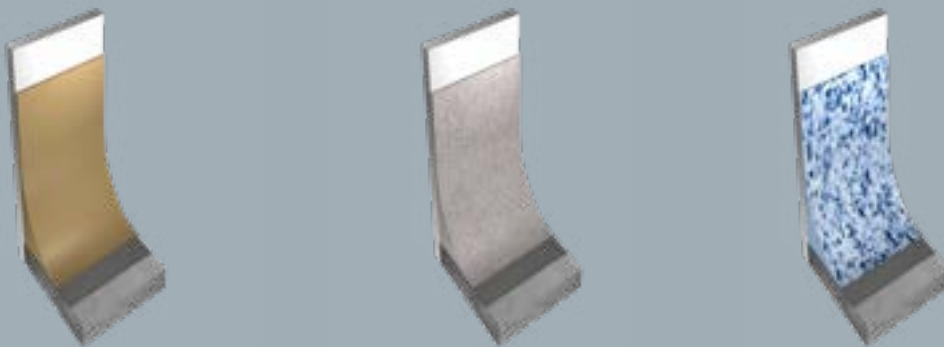
Sikafloor Pronto RB-1855 CP is a pigmented, self-leveling, flexible flooring system with a smooth or slip-resistant surface. It has excellent chemical and UV resistance for long-lasting color retention. It is a seamless, impervious floor system that is easy to clean and maintain.

- Sikafloor-41 P Pronto primer with Sikafloor-103 IN Pronto additive
- Sikafloor 61BC Pronto body coat with Sikafloor PGM 155 Pronto pigment and Sikadur 509 coarse broadcast aggregate
- Sikafloor-53 TC Pronto top coat



Sikafloor Pronto Cove Systems - PIGMENTED, QUARTZ AND FLAKE MMA COVE

Sikafloor Pronto cove systems provide a seamless, uniform appearance throughout the flooring, cove and wall surfaces for improved aesthetics and ease of cleaning. They are available in pigmented, quartz and flake finishes.



SIKAFLOOR® PRONTO® MMA PATCHING AND OVERLAY SYSTEM

Sikafloor Pronto 1817 PC is a methyl-methacrylate polymer concrete system designed for a wide range of applications that require a fast-curing, high-strength material. Sikafloor Pronto 1817 PC consists of two components – Sikafloor-17 RS Pronto Part A, a liquid methacrylate-based resin and Sikafloor-17 RS Part B, the powder component consisting of sand, inert fillers, polymers, pigments, and powder hardener.

Sikafloor Pronto 1817 PC system is used for thin patches, overlays and grouting, or filled with coarse aggregate and used for deep patches in slabs. The unique fast cure and outstanding durability make the Sikafloor 1817PC suitable for concrete restoration projects, including repairing and rebuilding deteriorated concrete surfaces.

Unique Characteristics

- Fully cures in one hour
- High strength, durable
- Variable installation thicknesses
- Can be applied at 20°F (-29°C)

Commonly Used Applications

- Industrial flooring overlays and patches
- Repair of cracked, spalled and eroded concrete
- Rebuild joints and deteriorated concrete surfaces
- Shimming, sloping and high strength grouting



WE ARE SIKA

Sika is a specialty chemicals company with a leading position in the development and production of systems and products for bonding, sealing, damping, reinforcing and protecting in the building sector and the motor vehicle industry. Sika's product lines feature concrete admixtures, mortars, sealants and adhesives, structural strengthening systems, industrial flooring as well as roofing and waterproofing systems.



Sika Corporation • Flooring

201 Polito Avenue
Lyndhurst NJ 07071
Tel: 800 933 7452

www.SikaFloorUSA.com

BUILDING TRUST

