

LaHabra®



Pebbletex Secondary Weather Barrier Design

Typical 2D Details

BUILDING TRUST



Pebbletex Secondary Weather Barrier Design

Typical 2D Details

Table of Contents

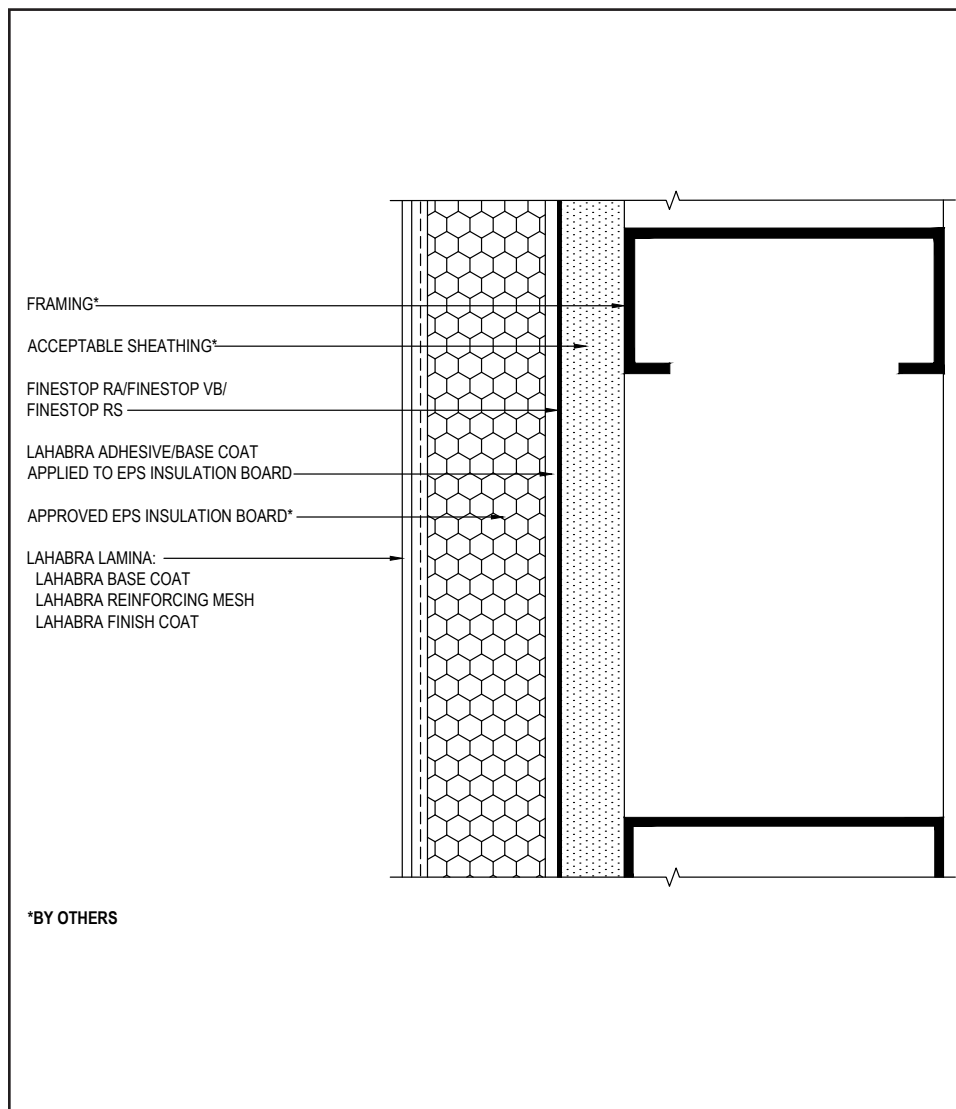
1. Secondary Weather Barrier Application
2. Secondary Weather Barrier Application (Isometric)
3. Aesthetic Reveal
4. Insulation Board & Reinforcing Mesh at Openings
5. Window Head (Flush)
6. Window Head (Recessed)
7. Window Jamb (Flush)
8. Window Jamb (Recessed)
9. Window Sill (Flush)
10. Window Sill (Recessed)
11. Roof Edge Flashing
12. Metal Coping
13. EPS Parapet Cap at Flat Roof
14. Expansion Joint at Floor Line
15. Expansion Joint at Change in Substrate
16. Section at Fascia - Soffit
17. Vertical Expansion Joint
18. Pipe Penetration
19. Corner Mesh Application with Strong 15 or Ultra HI 20
20. Corner Mesh Application with Standard 4, Intermediate 6 or 12
21. Light Fixture
22. Termination at Foundation
23. Termination at Foundation (Flush)
24. Kick-Out Flashing at Sloped Roof

Notes:

- **The details within are the latest recommendations and are represent in good faith by Sika Corporation US (hereinafter Sika). The details are subject to change without notice. Sika accepts no liability for the end use of the details. For conditions not shown, consult Sika for review of specific details.**
- **Install Sika materials in accordance with current installation instructions.**
- **Unsatisfactory conditions shall be reported to the General Contractor and corrected before the application of Sika products.**

Pebbletex Secondary Weather Barrier Design

TYPICAL SECONDARY WEATHER BARRIER APPLICATION



- Use of SikaWall Ultra HI 20 reinforcing mesh is recommend at the ground floor in high traffic areas and in areas exposed to potential for high impact.
- All terminations must be fully encapsulated with mesh reinforced base coat.

01 0524

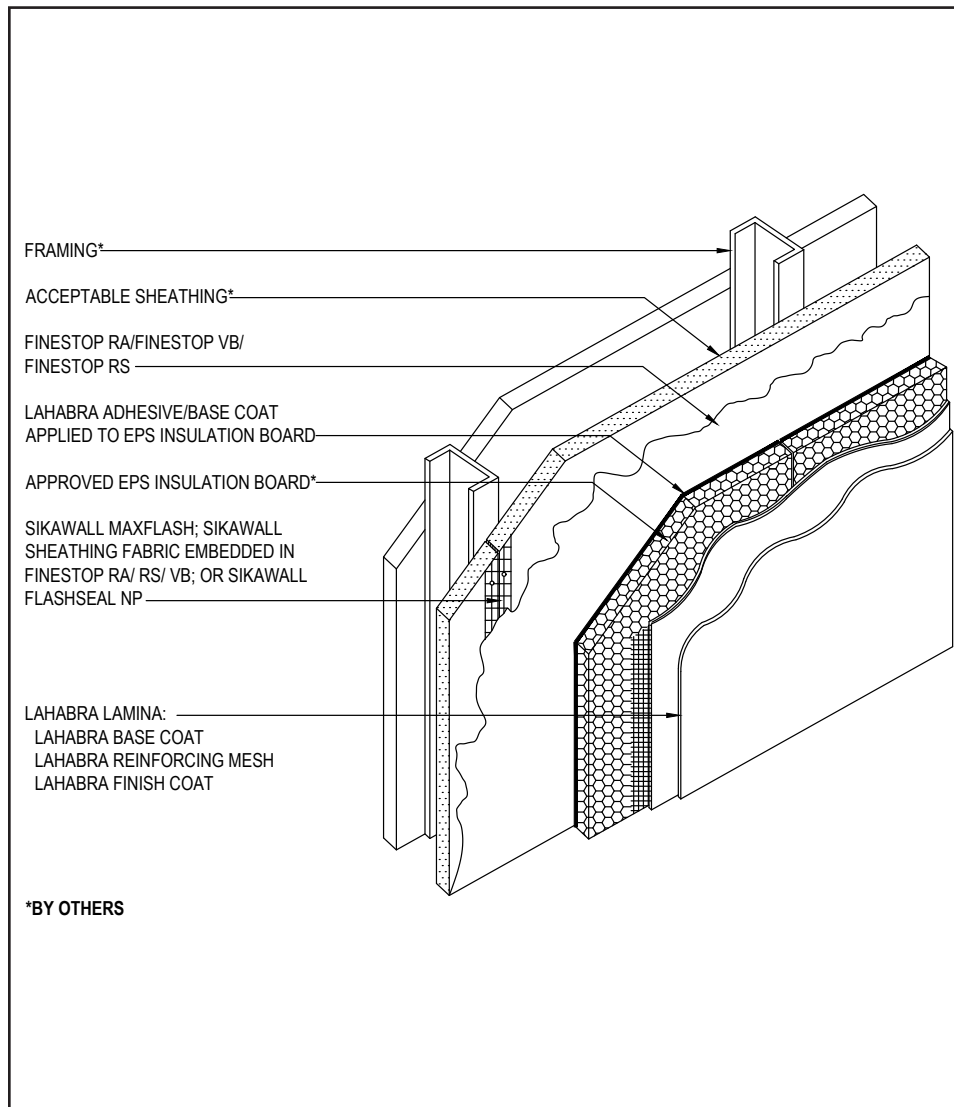
(*NOTE: BY OTHERS)

The details within are the latest recommendations and are represented in good faith by Sika Corporation US (hereinafter Sika). The details are subject to change without notice. Sika accepts no liability for the end use of the details. For conditions not shown, consult Sika for review of specific details.

- Install Sika materials in accordance with current installation instructions.
- Unsatisfactory conditions shall be reported to the General Contractor and corrected before the application of Sika products.

Pebbletex Secondary Weather Barrier Design

TYPICAL SECONDARY WEATHER BARRIER APPLICATION (ISOMETRIC)



- Use of SikaWall Ultra HI 20 reinforcing mesh is recommend at the ground floor in high traffic areas and in areas exposed to potential for high impact.
- All terminations must be fully encapsulated with mesh reinforced base coat.

02 0524

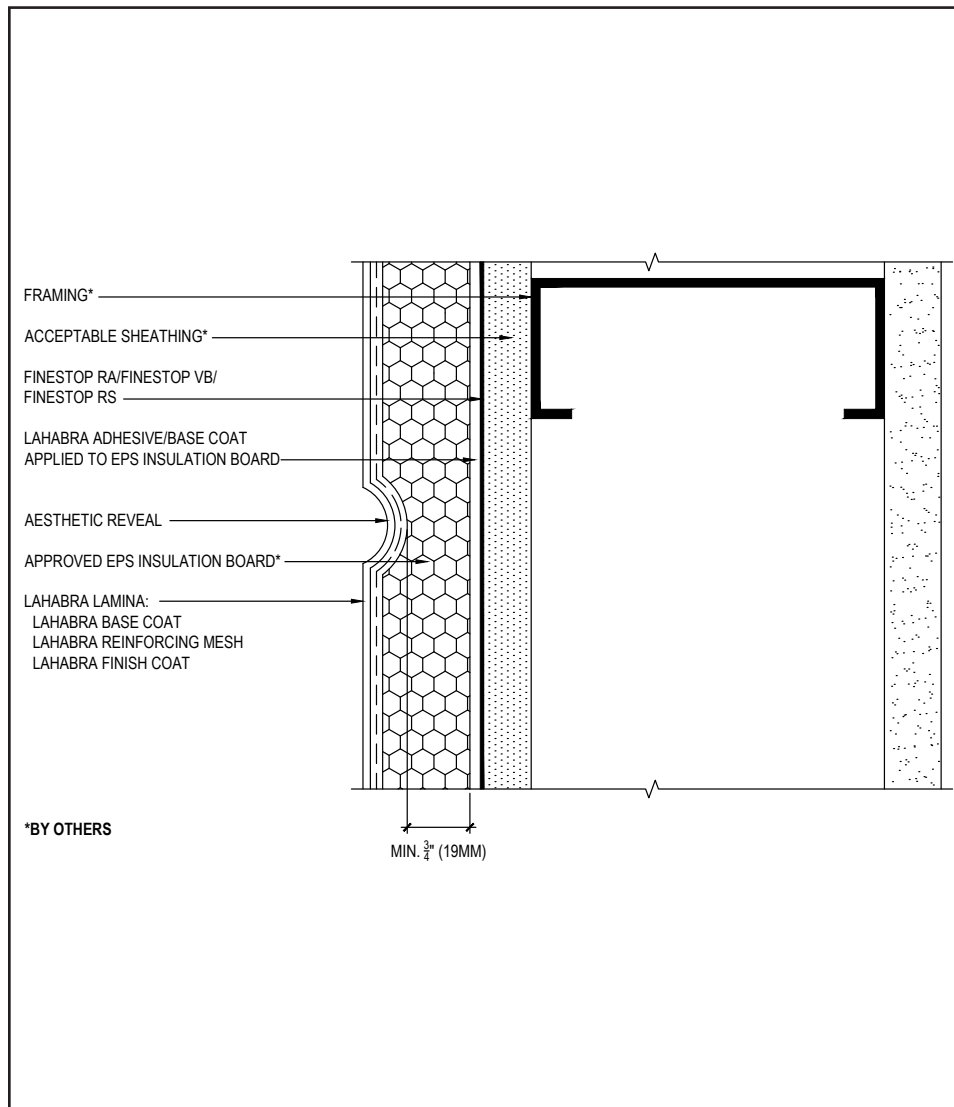
(*NOTE: BY OTHERS)

The details within are the latest recommendations and are represented in good faith by Sika Corporation US (hereinafter Sika). The details are subject to change without notice. Sika accepts no liability for the end use of the details. For conditions not shown, consult Sika for review of specific details.

- Install Sika materials in accordance with current installation instructions.
- Unsatisfactory conditions shall be reported to the General Contractor and corrected before the application of Sika products.

Pebbletex Secondary Weather Barrier Design

TYPICAL AESTHETIC REVEAL



- Maintain a continuous layer of EPS insulation board, at a minimum 3/4" (19 mm) thickness, behind all reveals and aesthetic grooves.
- Reinforcing mesh shall be continuous and care shall be taken to ensure reinforcing mesh is not cut during base coat application.
- Horizontal reveals shall provide for outward positive drainage.
- Reveals must not occur at the abutment of two pieces of EPS insulation board.

03 0524

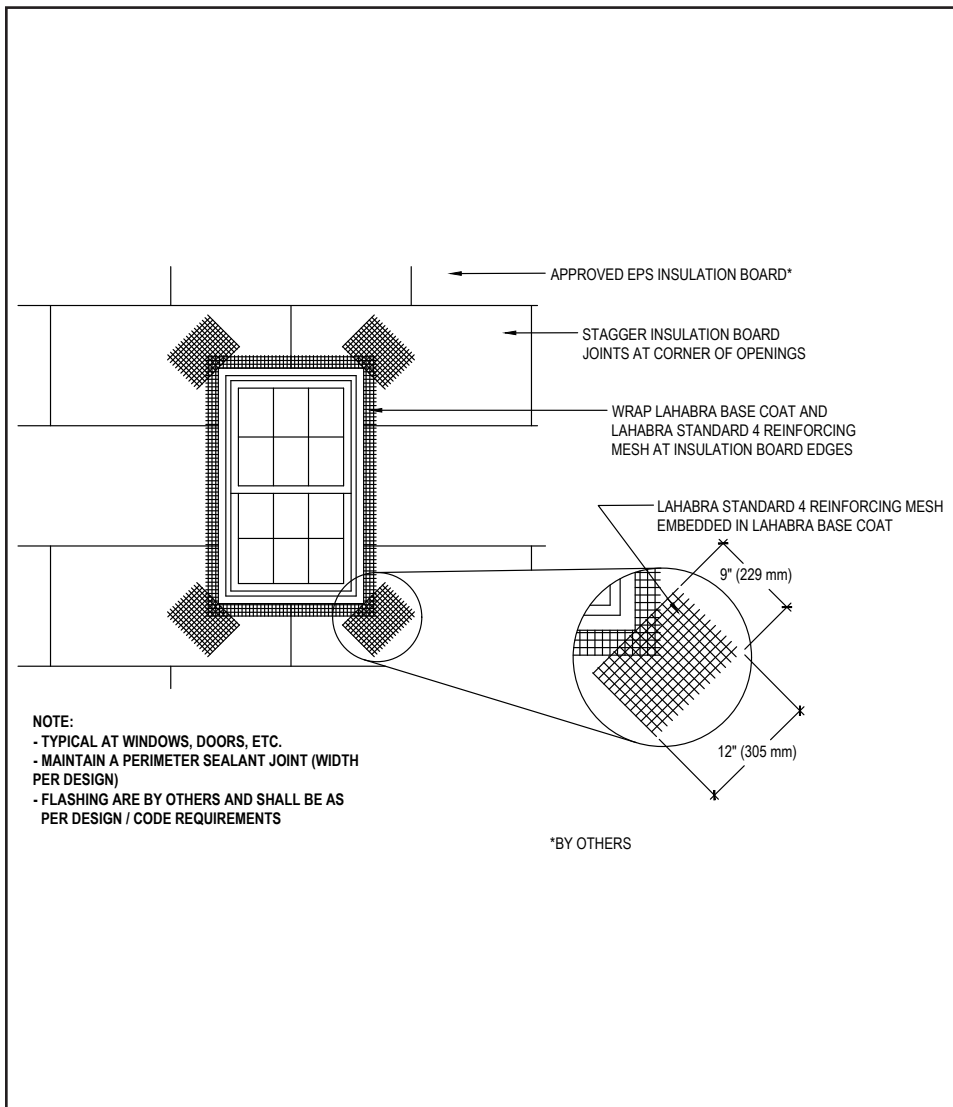
(*NOTE: BY OTHERS)

The details within are the latest recommendations and are represented in good faith by Sika Corporation US (hereinafter Sika). The details are subject to change without notice. Sika accepts no liability for the end use of the details. For conditions not shown, consult Sika for review of specific details.

- Install Sika materials in accordance with current installation instructions.
- Unsatisfactory conditions shall be reported to the General Contractor and corrected before the application of Sika products.

Pebbletex Secondary Weather Barrier Design

TYPICAL INSULATION BOARD & REINFORCING MESH AT OPENINGS



- Stagger joints horizontally in a running bond pattern offset a minimum of 6".
- Pre-cut insulation board to fit openings and projections. Insulation board must be a single piece around corners of openings.
- Stagger vertical joints and corners. Stagger insulation and sheathing board joints.
- Offset insulation board joints from sheathing joints by a minimum of 16".

04 0524

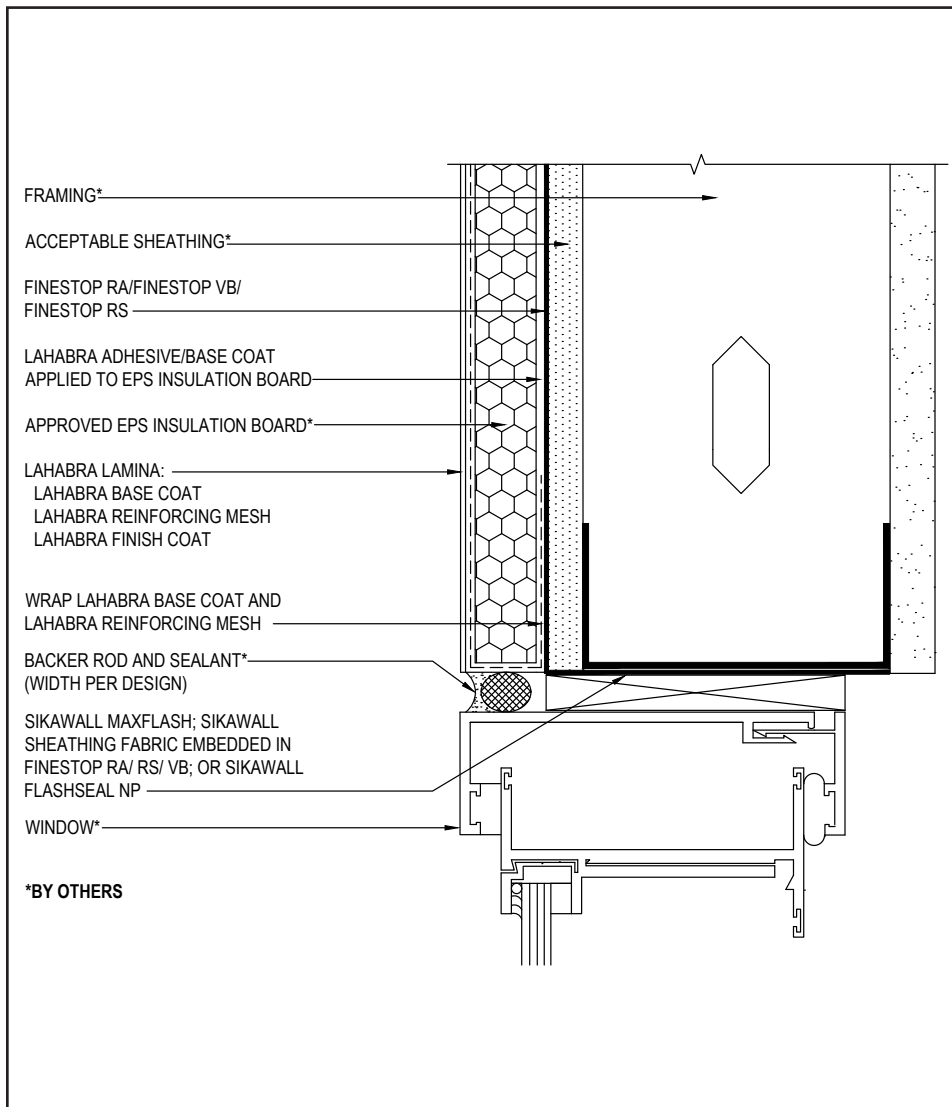
(*NOTE: BY OTHERS)

The details within are the latest recommendations and are represented in good faith by Sika Corporation US (hereinafter Sika). The details are subject to change without notice. Sika accepts no liability for the end use of the details. For conditions not shown, consult Sika for review of specific details.

- Install Sika materials in accordance with current installation instructions.
- Unsatisfactory conditions shall be reported to the General Contractor and corrected before the application of Sika products.

Pebbletex Secondary Weather Barrier Design

TYPICAL WINDOW HEAD (FLUSH)



05 0524

(*NOTE: BY OTHERS)

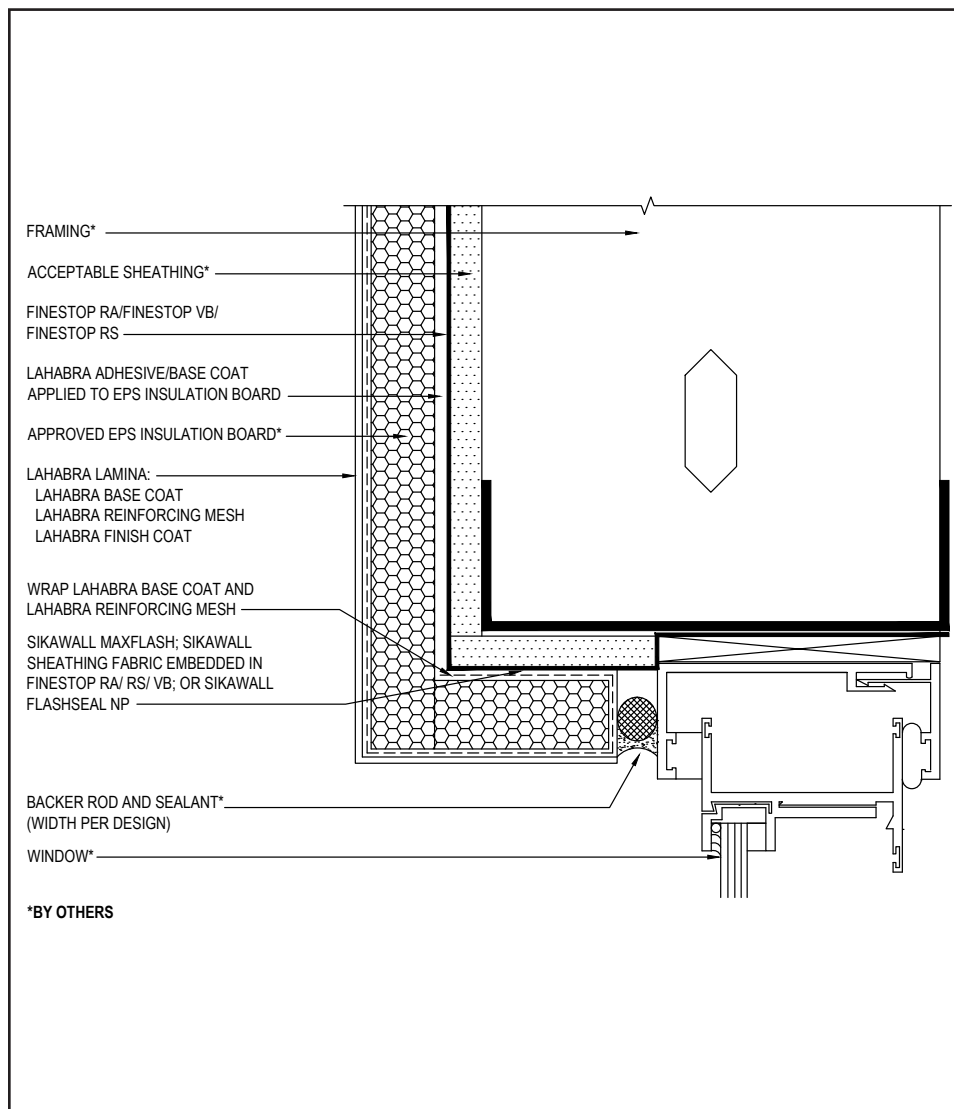
- All terminations must be fully encapsulated with mesh reinforced base coat. Extend reinforcing mesh a minimum of 2½" onto back of insulation board.
- Prior to window and EPS installation, ensure water-resistive barrier is properly applied into the rough openings in accordance with LaHabra application guidelines and code requirements. Reference LaHabra Finestop published typical details for further information.
- Do not apply finish to areas that will receive sealant.
- Provide a back wrapped type joint with backer rod and sealant at system terminations to dissimilar materials, ensuring that a water tight seal is achieved (width per design).
- Reference *Acceptable Sealants for use with LaHabra Wall Systems* Technical Bulletin for a list of sealants.
- Consult window and sealant manufacturers to verify window installation, detailing and to ensure no water leakage into the wall assembly.

The details within are the latest recommendations and are represented in good faith by Sika Corporation US (hereinafter Sika). The details are subject to change without notice. Sika accepts no liability for the end use of the details. For conditions not shown, consult Sika for review of specific details.

- Install Sika materials in accordance with current installation instructions.
- Unsatisfactory conditions shall be reported to the General Contractor and corrected before the application of Sika products.

Pebbletex Secondary Weather Barrier Design

TYPICAL WINDOW HEAD (RECESSED)



06 0524

(*NOTE: BY OTHERS)

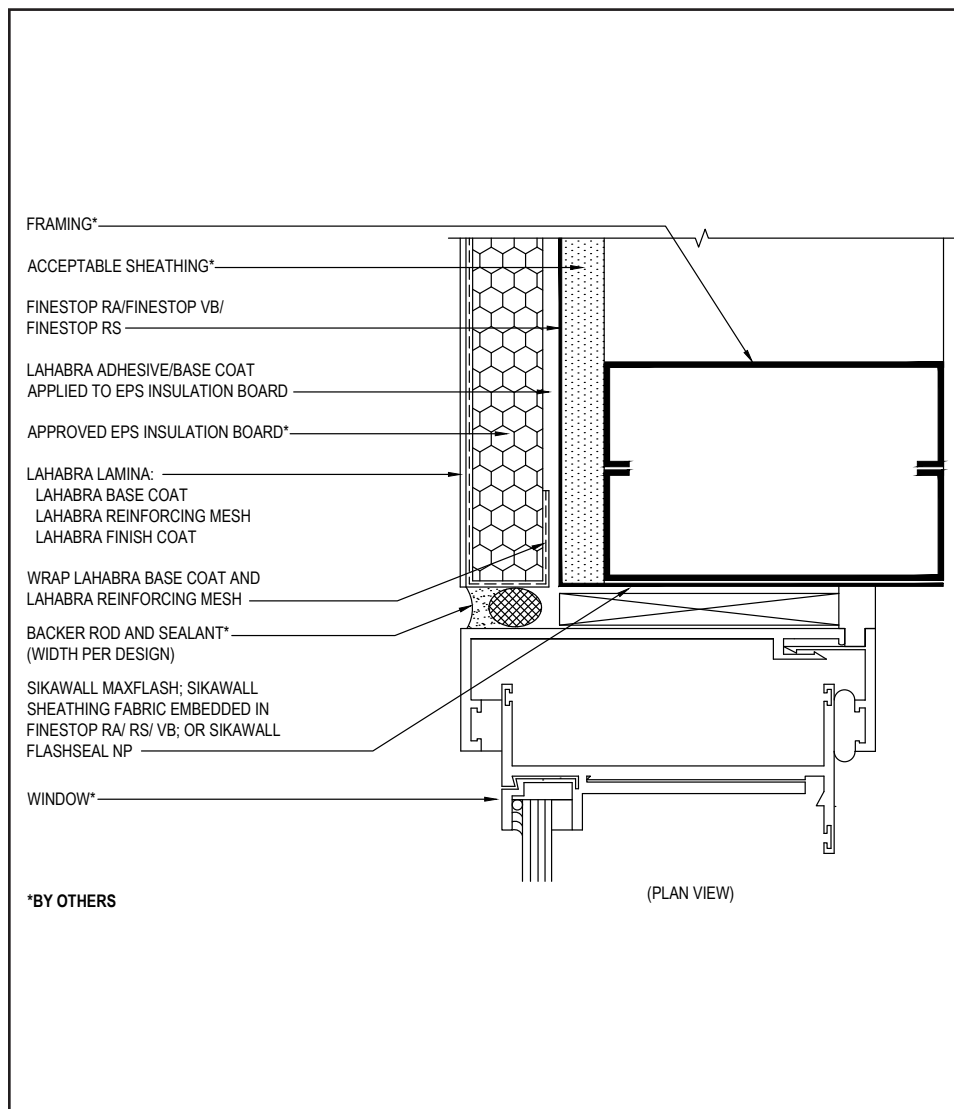
- All terminations must be fully encapsulated with mesh reinforced base coat. Extend reinforcing mesh a minimum of 2½" onto back of insulation board.
- Prior to window and EPS installation, ensure water-resistant barrier is properly applied into the rough openings in accordance with LaHabra application guidelines and code requirements. Reference LaHabra Finestop published typical details for further information.
- Do not apply finish to areas that will receive sealant.
- Provide a back wrapped type joint with backer rod and sealant at system terminations to dissimilar materials, ensuring that a water tight seal is achieved (width per design).
- Reference *Acceptable Sealants for use with LaHabra Wall Systems Technical Bulletin* for a list of sealants.
- Consult window and sealant manufacturers to verify window installation, detailing and to ensure no water leakage into the wall assembly.

The details within are the latest recommendations and are represented in good faith by Sika Corporation US (hereinafter Sika). The details are subject to change without notice. Sika accepts no liability for the end use of the details. For conditions not shown, consult Sika for review of specific details.

- Install Sika materials in accordance with current installation instructions.
- Unsatisfactory conditions shall be reported to the General Contractor and corrected before the application of Sika products.

Pebbletex Secondary Weather Barrier Design

TYPICAL WINDOW JAMB (FLUSH)



07 0524

(*NOTE: BY OTHERS)

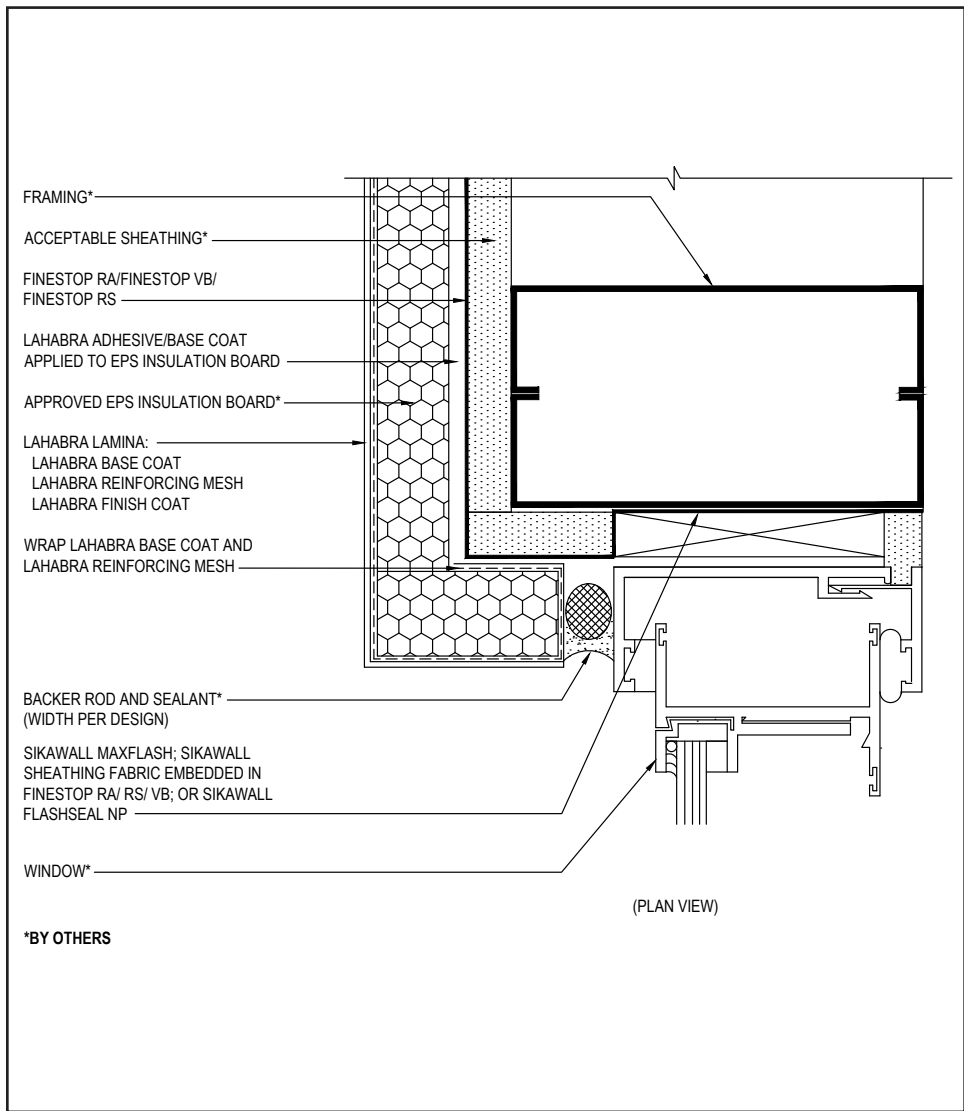
- All terminations must be fully encapsulated with mesh reinforced base coat. Extend reinforcing mesh a minimum of 2½" onto back of insulation board.
- Prior to window and EPS installation, ensure water-resistive barrier is properly applied into the rough openings in accordance with LaHabra application guidelines and code requirements. Reference LaHabra Finestop published typical details for further information.
- Do not apply finish to areas that will receive sealant.
- Provide a back wrapped type joint with backer rod and sealant at system terminations to dissimilar materials, ensuring that a water tight seal is achieved (width per design).
- Reference *Acceptable Sealants for use with LaHabra Wall Systems* Technical Bulletin for a list of sealants.
- Consult window and sealant manufacturers to verify window installation, detailing and to ensure no water leakage into the wall assembly.

The details within are the latest recommendations and are represented in good faith by Sika Corporation US (hereinafter Sika). The details are subject to change without notice. Sika accepts no liability for the end use of the details. For conditions not shown, consult Sika for review of specific details.

- Install Sika materials in accordance with current installation instructions.
- Unsatisfactory conditions shall be reported to the General Contractor and corrected before the application of Sika products.

Pebbletex Secondary Weather Barrier Design

TYPICAL WINDOW JAMB (RECESSED)



*BY OTHERS

(PLAN VIEW)

- All terminations must be fully encapsulated with mesh reinforced base coat. Extend reinforcing mesh a minimum of 2½" onto back of insulation board.
- Prior to window and EPS installation, ensure water-resistive barrier is properly applied into the rough openings in accordance with LaHabra application guidelines and code requirements. Reference LaHabra Finestop published typical details for further information.
- Do not apply finish to areas that will receive sealant.
- Provide a back wrapped type joint with backer rod and sealant at system terminations to dissimilar materials, ensuring that a water tight seal is achieved (width per design).
- Reference *Acceptable Sealants for use with LaHabraWall Systems* Technical Bulletin for a list of sealants.
- Consult window and sealant manufacturers to verify window installation, detailing and to ensure no water leakage into the wall assembly.

08 0524

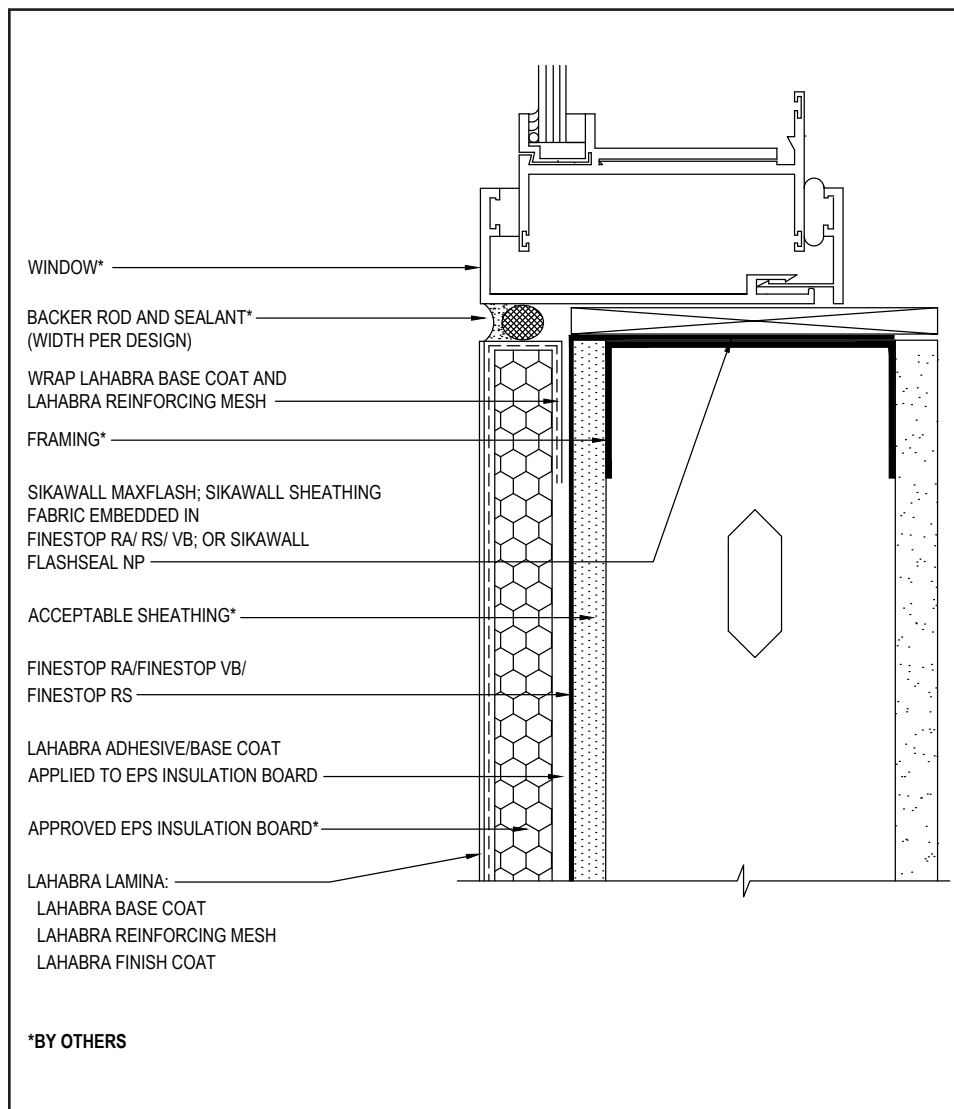
(*NOTE: BY OTHERS)

The details within are the latest recommendations and are represented in good faith by Sika Corporation US (hereinafter Sika). The details are subject to change without notice. Sika accepts no liability for the end use of the details. For conditions not shown, consult Sika for review of specific details.

- Install Sika materials in accordance with current installation instructions.
- Unsatisfactory conditions shall be reported to the General Contractor and corrected before the application of Sika products.

Pebbletex Secondary Weather Barrier Design

TYPICAL WINDOW SILL (FLUSH)



09 0524

(*NOTE: BY OTHERS)

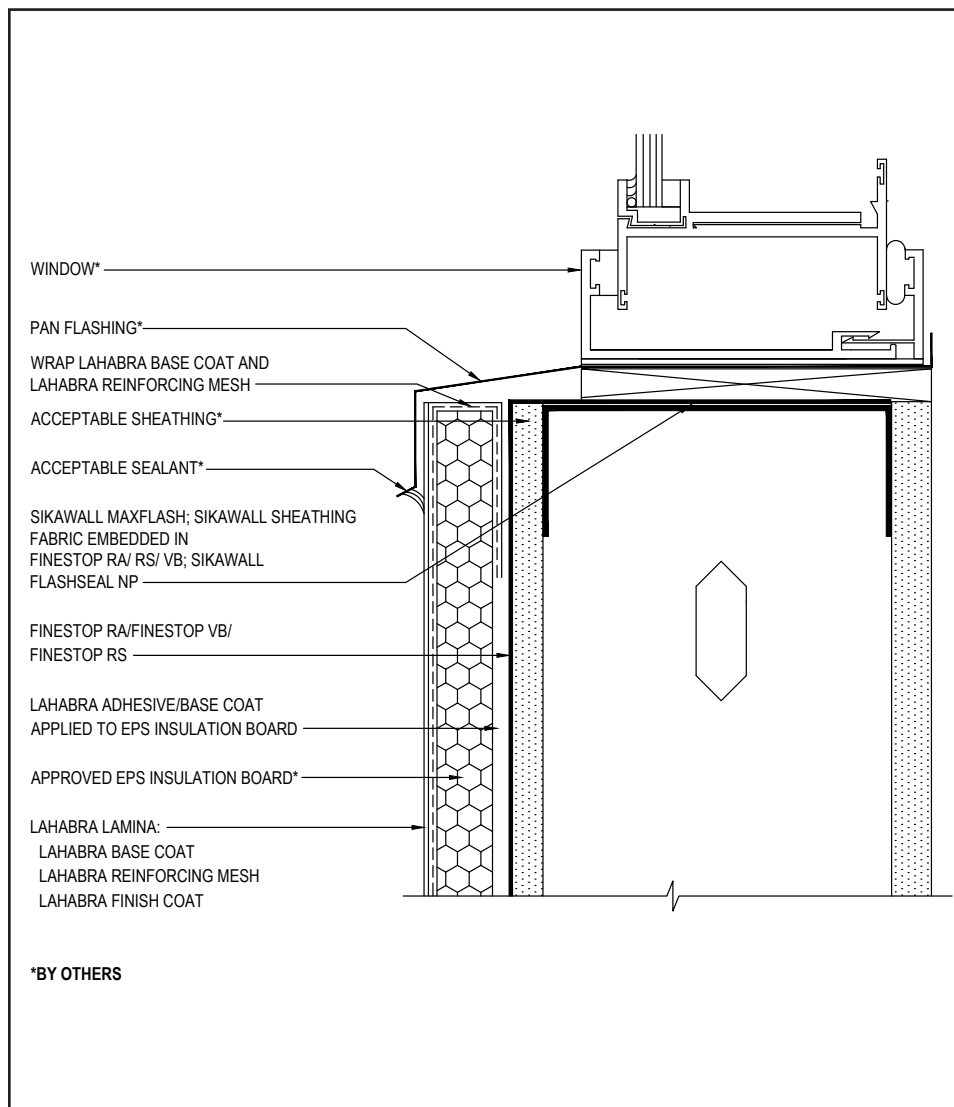
- All terminations must be fully encapsulated with mesh reinforced base coat. Extend reinforcing mesh a minimum of 2½" onto back of insulation board.
- Prior to window and EPS installation, ensure water-resistive barrier is properly applied into the rough openings in accordance with LaHabra application guidelines and code requirements. Reference LaHabra Finestop published typical details for further information.
- Do not apply finish to areas that will receive sealant.
- Provide a back wrapped type joint with backer rod and sealant at system terminations to dissimilar materials, ensuring that a water tight seal is achieved (width per design).
- Reference *Acceptable Sealants for use with LaHabra Wall Systems* Technical Bulletin for a list of sealants.
- Consult window and sealant manufacturers to verify window installation, detailing and to ensure no water leakage into the wall assembly.

The details within are the latest recommendations and are represented in good faith by Sika Corporation US (hereinafter Sika). The details are subject to change without notice. Sika accepts no liability for the end use of the details. For conditions not shown, consult Sika for review of specific details.

- Install Sika materials in accordance with current installation instructions.
- Unsatisfactory conditions shall be reported to the General Contractor and corrected before the application of Sika products.

Pebbletex Secondary Weather Barrier Design

TYPICAL WINDOW SILL (RECESSED)



- All terminations must be fully encapsulated with mesh reinforced base coat. Extend reinforcing mesh a minimum of 2½" onto back of insulation board.
- Ensure water-resistive barrier is properly applied into the rough openings in accordance with application guidelines and code requirements prior to EPS insulation board application.
- Ensure that metal pan flashing extends onto the system a minimum of 2" (50 mm) down the face and that end dams are provided.
- Consult window and sealant manufacturers to verify window installation, detailing and to ensure no water leakage into the wall assembly.

10 0524

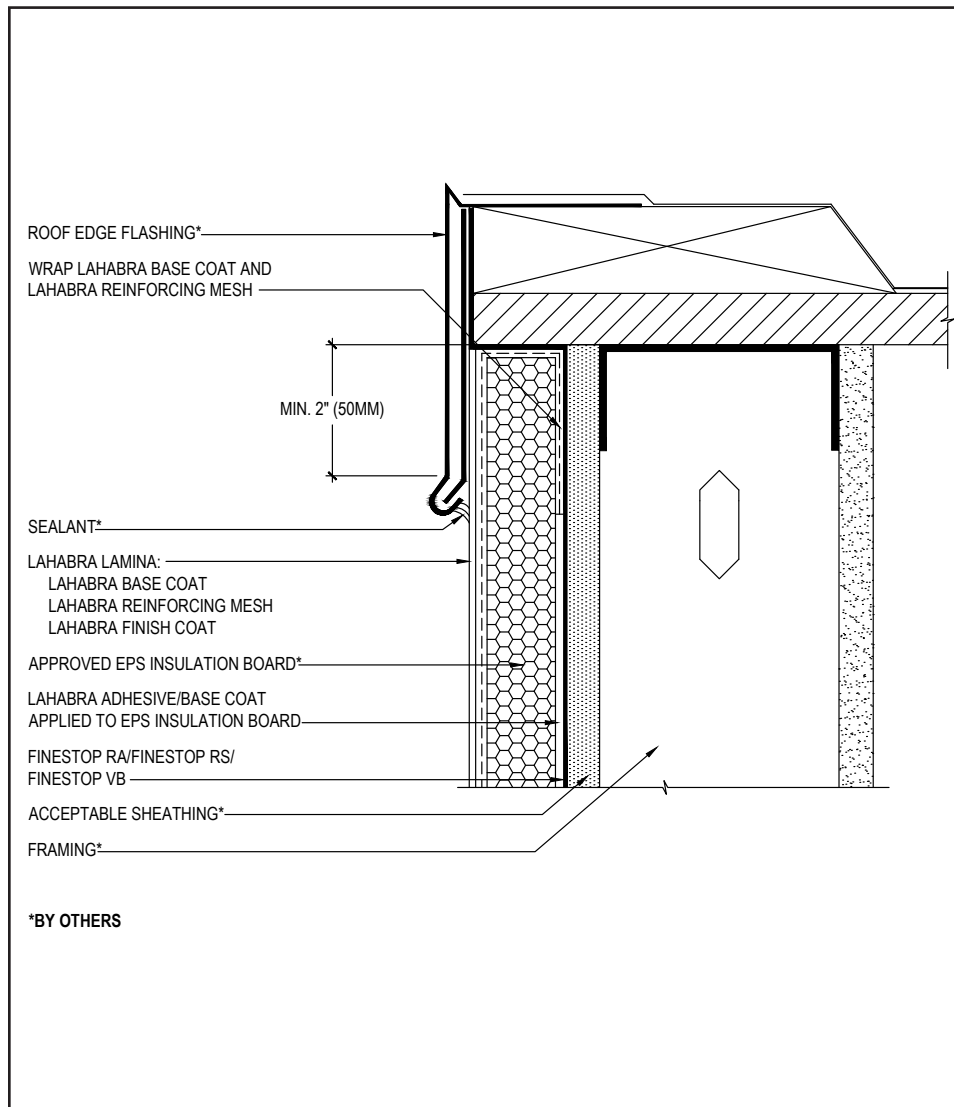
(*NOTE: BY OTHERS)

The details within are the latest recommendations and are represented in good faith by Sika Corporation US (hereinafter Sika). The details are subject to change without notice. Sika accepts no liability for the end use of the details. For conditions not shown, consult Sika for review of specific details.

- Install Sika materials in accordance with current installation instructions.
- Unsatisfactory conditions shall be reported to the General Contractor and corrected before the application of Sika products.

Pebbletex Secondary Weather Barrier Design

TYPICAL ROOF EDGE FLASHING



- All terminations must be fully encapsulated with mesh reinforced base coat. Extend reinforcing mesh a minimum of 2½" onto back of insulation board.
- Ensure that metal coping/flashing extends onto the system a minimum of 2" (50 mm) down the face.
- Extend Finestop RA/RS/VB or SikaWall MaxFlash onto bottom of blocking or provide alternate air seal at sheathing termination to blocking.
- Reference *Acceptable Sealants for use with LaHabra Wall Systems* Technical Bulletin for a list of sealants.

11 0524

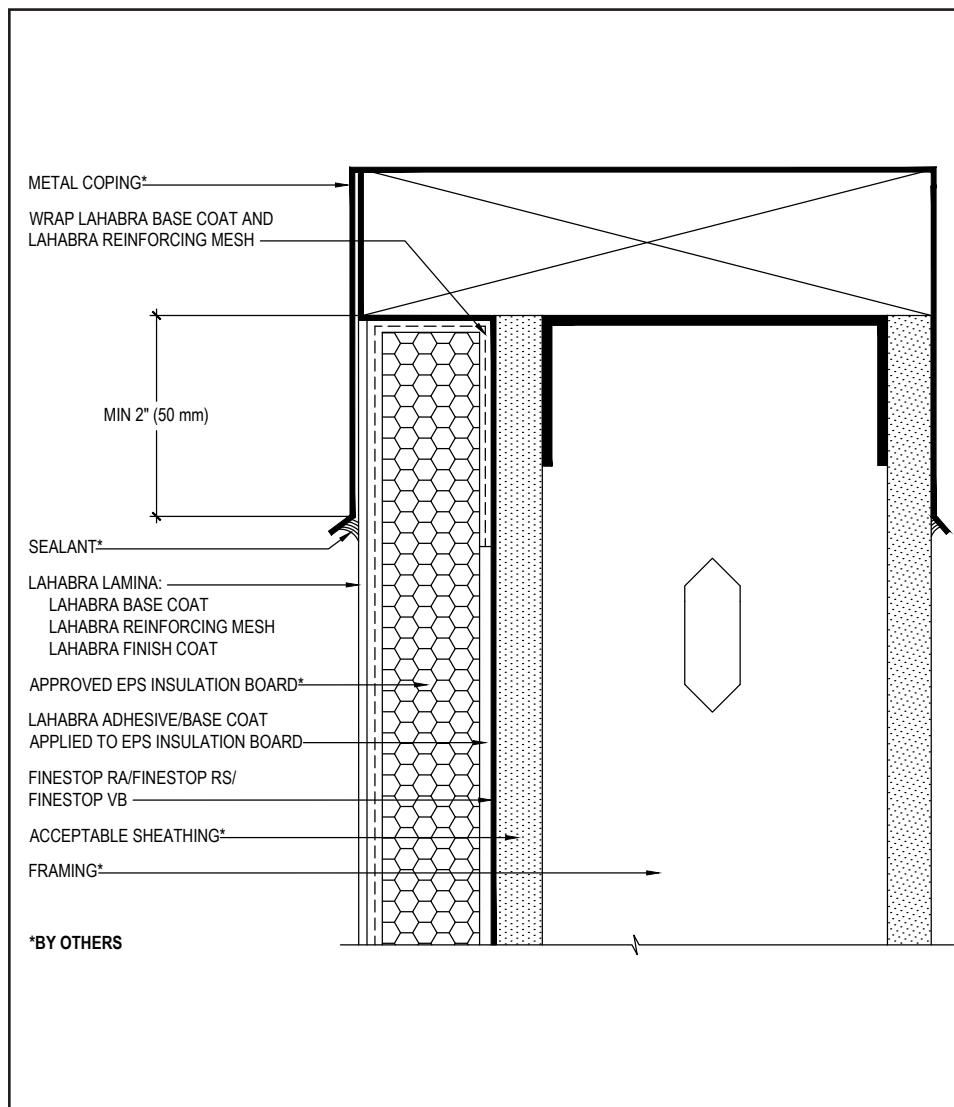
(*NOTE: BY OTHERS)

The details within are the latest recommendations and are represented in good faith by Sika Corporation US (hereinafter Sika). The details are subject to change without notice. Sika accepts no liability for the end use of the details. For conditions not shown, consult Sika for review of specific details.

- Install Sika materials in accordance with current installation instructions.
- Unsatisfactory conditions shall be reported to the General Contractor and corrected before the application of Sika products.

Pebbletex Secondary Weather Barrier Design

TYPICAL METAL COPING



- All terminations must be fully encapsulated with mesh reinforced base coat. Extend reinforcing mesh a minimum of 2½" onto back of insulation board.
- Ensure that metal coping/flashing extends onto the system a minimum of 2" (50 mm) down the face.
- Extend Finestop RA/RS/VB or SikaWall MaxFlash onto bottom of blocking or provide alternate air seal at sheathing termination to blocking.
- Reference *Acceptable Sealants for use with LaHabra Wall Systems* Technical Bulletin for a list of sealants.

12 0524

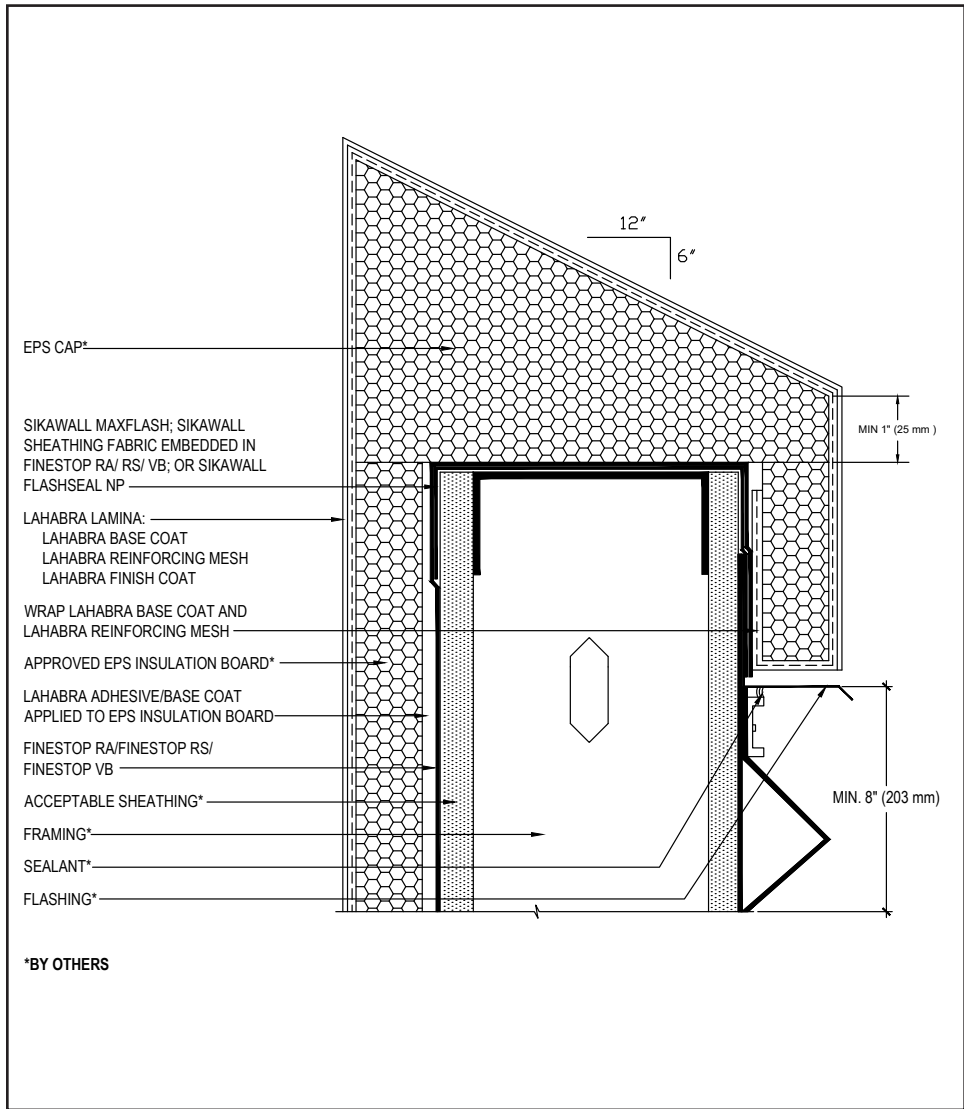
(*NOTE: BY OTHERS)

The details within are the latest recommendations and are represented in good faith by Sika Corporation US (hereinafter Sika). The details are subject to change without notice. Sika accepts no liability for the end use of the details. For conditions not shown, consult Sika for review of specific details.

- Install Sika materials in accordance with current installation instructions.
- Unsatisfactory conditions shall be reported to the General Contractor and corrected before the application of Sika products.

Pebbletex Secondary Weather Barrier Design

TYPICAL EPS PARAPET CAP



- All terminations must be fully encapsulated with mesh reinforced base coat. Extend reinforcing mesh a minimum of 2½" onto back of insulation board.
- Provide a minimum 6:12 slope for all horizontal surfaces. LaHabra requires the use of a roofing system or metal cap flashing for sloped surfaces over 24" (610 mm).
- Additional layers of mesh reinforced base coat is recommended when sloped surfaces exceed 12" (305 mm).
- Terminate system a minimum of 8" (203 mm) above flat roof.
- Roofing material shall not extend above the flashing flange.
- Maintain a minimum 1" (25 mm) thick EPS insulation board.

13 0524

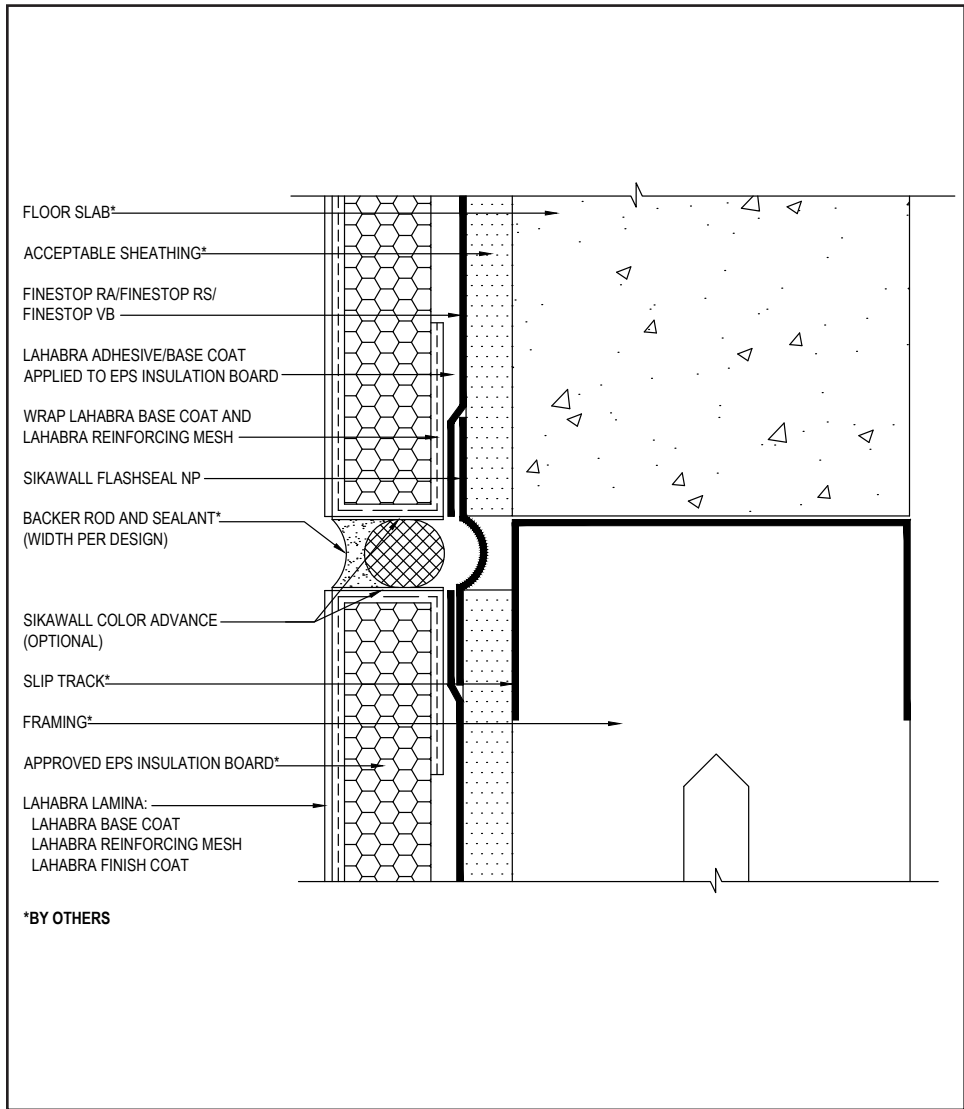
(*NOTE: BY OTHERS)

The details within are the latest recommendations and are represented in good faith by Sika Corporation US (hereinafter Sika). The details are subject to change without notice. Sika accepts no liability for the end use of the details. For conditions not shown, consult Sika for review of specific details.

- Install Sika materials in accordance with current installation instructions.
- Unsatisfactory conditions shall be reported to the General Contractor and corrected before the application of Sika products.

Pebbletex Secondary Weather Barrier Design

TYPICAL EXPANSION JOINT AT FLOOR LINE



- All terminations must be fully encapsulated with mesh reinforced base coat. Extend reinforcing mesh a minimum of 2½" onto back of insulation board.
- Do not apply finish to areas that will receive sealant.
- Provide sufficient slack in the SikaWall Flash Seal NP at expansion joint to allow for movement.
- Typical locations for system expansion joints are at building expansion joints, at prefabricated panel joints, floor lines of wood frame construction or where slip tracks are used in steel frame construction, where substrates change and where structural movement is anticipated. It is the sole responsibility of the project design team, including the architect, engineer, etc., to ultimately determine specific expansion joint placement, width and design. Detail specific locations in construction drawings.
- Reference *Acceptable Sealants for use with LaHabra Wall Systems* Technical Bulletin for a list of sealants.

14 0524

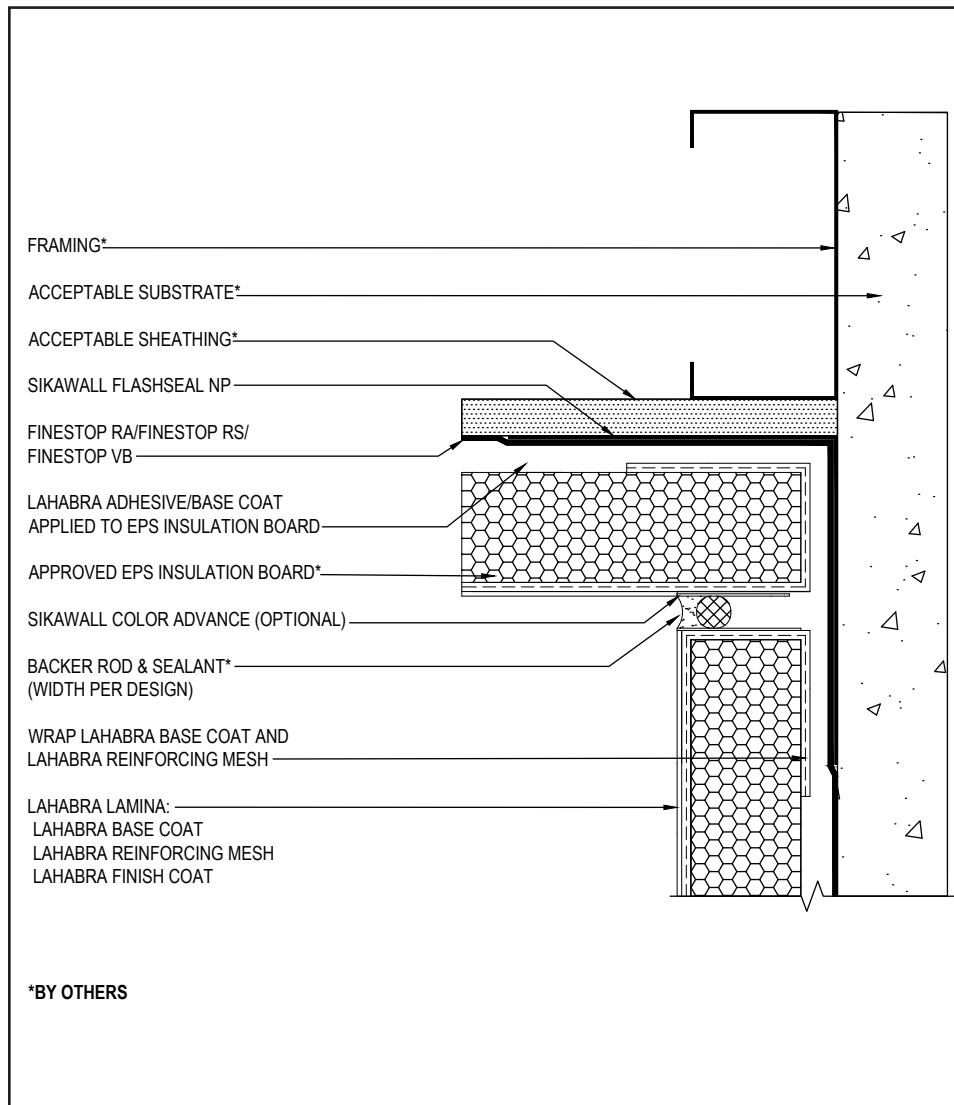
(*NOTE: BY OTHERS)

The details within are the latest recommendations and are represented in good faith by Sika Corporation US (hereinafter Sika). The details are subject to change without notice. Sika accepts no liability for the end use of the details. For conditions not shown, consult Sika for review of specific details.

- Install Sika materials in accordance with current installation instructions.
- Unsatisfactory conditions shall be reported to the General Contractor and corrected before the application of Sika products.

Pebbletex Secondary Weather Barrier Design

TYPICAL EXPANSION JOINT AT CHANGE IN SUBSTRATE



- All terminations must be fully encapsulated with mesh reinforced base coat. Extend reinforcing mesh a minimum of 2½" onto back of insulation board.
- Do not apply finish to areas that will receive sealant.
- Typical locations for system expansion joints are at building expansion joints, at prefabricated panel joints, floor lines of wood frame construction or where slip tracks are used in steel frame construction, where substrates change and where structural movement is anticipated. It is the sole responsibility of the project design team, including the architect, engineer, etc., to ultimately determine specific expansion joint placement, width and design. Detail specific locations in construction drawings.
- Provide sufficient slack in SikaWall Flash Seal NP at expansion joint to allow for movement.
- Reference *Acceptable Sealants for use with LaHabra Wall Systems* Technical Bulletin for a list of sealants.

15 0524

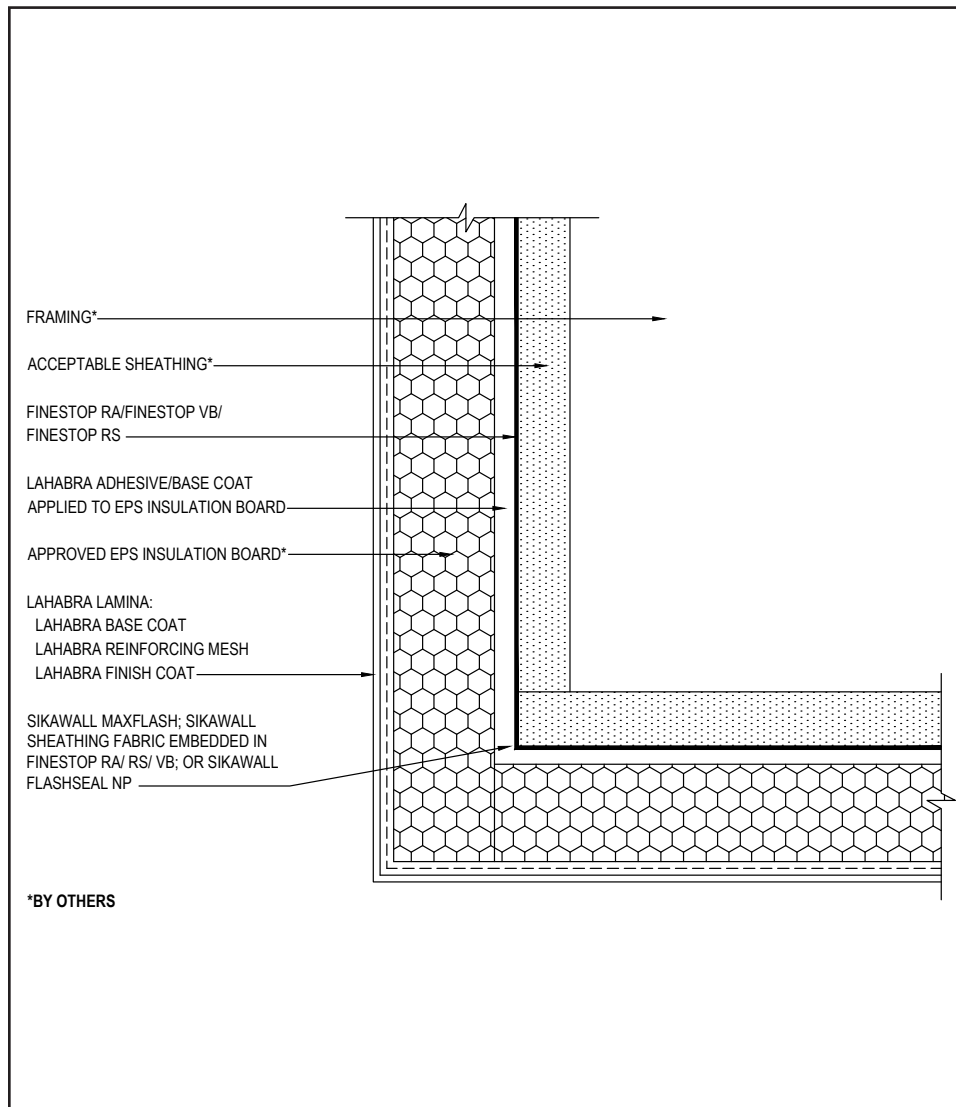
(*NOTE: BY OTHERS)

The details within are the latest recommendations and are represented in good faith by Sika Corporation US (hereinafter Sika). The details are subject to change without notice. Sika accepts no liability for the end use of the details. For conditions not shown, consult Sika for review of specific details.

- Install Sika materials in accordance with current installation instructions.
- Unsatisfactory conditions shall be reported to the General Contractor and corrected before the application of Sika products.

Pebbletex Secondary Weather Barrier Design

TYPICAL SECTION AT FASCIA - SOFFIT



- Ensure Standard, SikaWall Intermediate 6 or SikaWall Intermediate 12 Reinforcing Mesh is lapped a minimum of 8" (203 mm) around corners.

16 0524

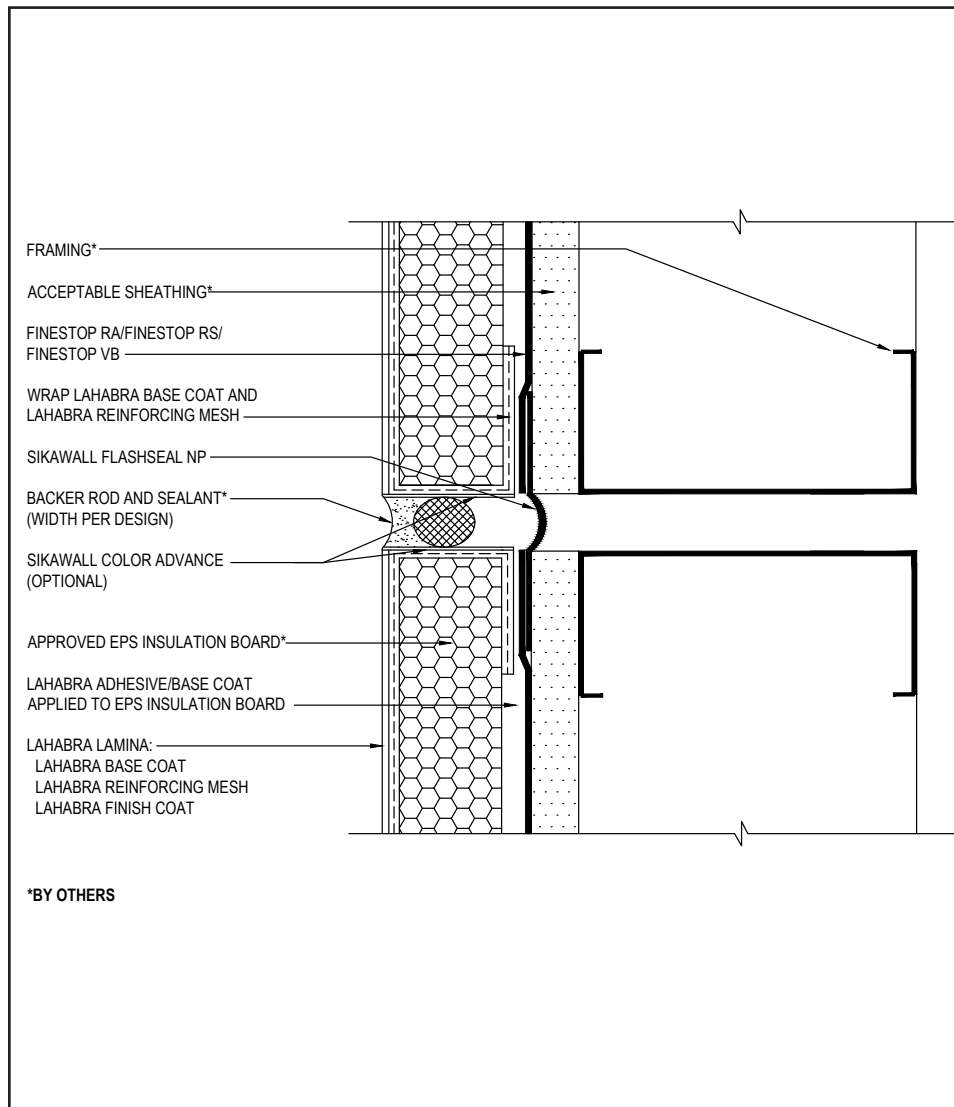
(*NOTE: BY OTHERS)

The details within are the latest recommendations and are represented in good faith by Sika Corporation US (hereinafter Sika). The details are subject to change without notice. Sika accepts no liability for the end use of the details. For conditions not shown, consult Sika for review of specific details.

- Install Sika materials in accordance with current installation instructions.
- Unsatisfactory conditions shall be reported to the General Contractor and corrected before the application of Sika products.

Pebbletex Secondary Weather Barrier Design

TYPICAL VERTICAL EXPANSION JOINT



*BY OTHERS

(*NOTE: BY OTHERS)

- All terminations must be fully encapsulated with mesh reinforced base coat. Extend reinforcing mesh a minimum of 2½" onto back of insulation board.
- Do not apply finish to areas that will receive sealant.
- Typical locations for system expansion joints are at building expansion joints, at prefabricated panel joints, floor lines of wood frame construction or where slip tracks are used in steel frame construction, where substrates change and where structural movement is anticipated. It is the sole responsibility of the project design team, including the architect, engineer, etc., to ultimately determine specific expansion joint placement, width and design. Detail specific locations in construction drawings
- Provide sufficient slack in SikaWall Flash Seal NP at expansion joint to allow for movement.
- Reference *Acceptable Sealants for use with LaHabra Wall Systems* Technical Bulletin for a list of sealants.

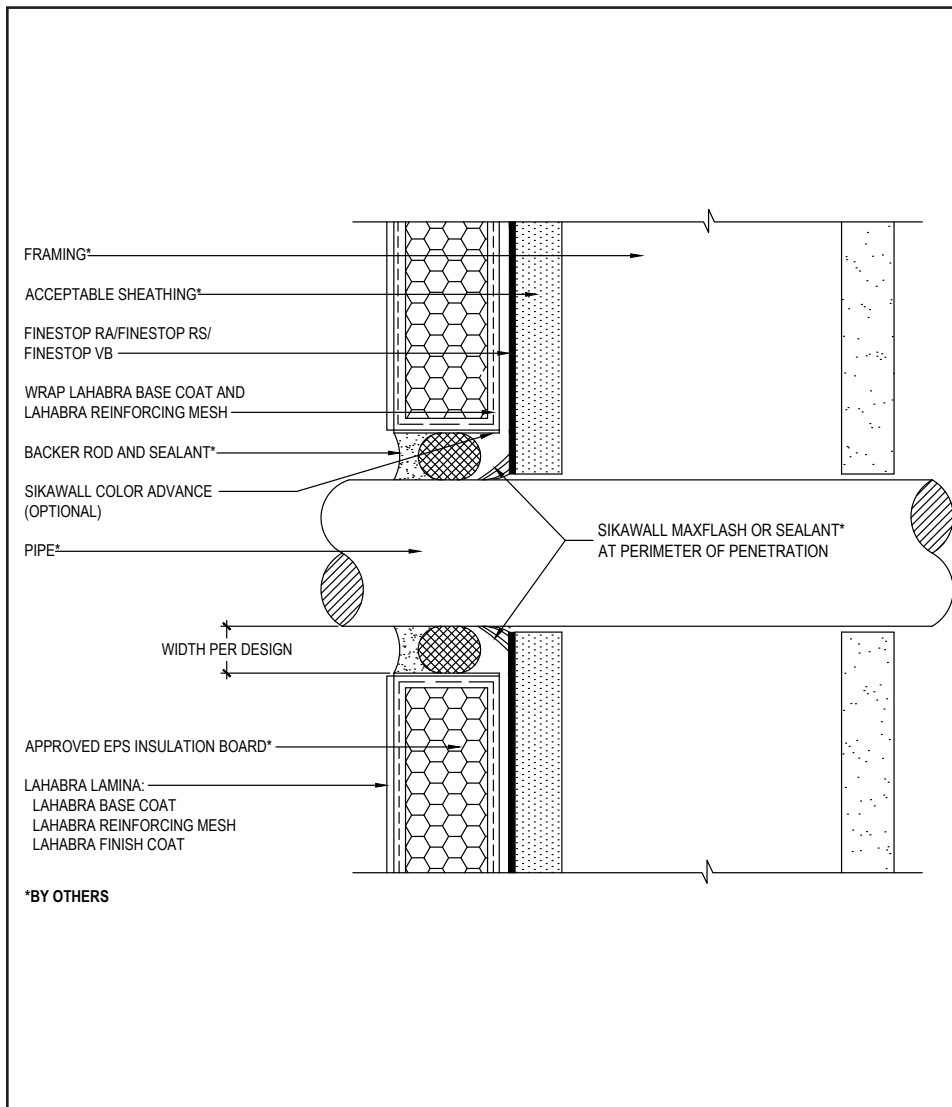
17 0524

The details within are the latest recommendations and are represented in good faith by Sika Corporation US (hereinafter Sika). The details are subject to change without notice. Sika accepts no liability for the end use of the details. For conditions not shown, consult Sika for review of specific details.

- Install Sika materials in accordance with current installation instructions.
- Unsatisfactory conditions shall be reported to the General Contractor and corrected before the application of Sika products.

Pebbletex Secondary Weather Barrier Design

TYPICAL PIPE PENETRATION



- All terminations must be fully encapsulated with mesh reinforced base coat. Extend reinforcing mesh a minimum of 2½" onto back of insulation board.
- Ensure all penetrations into the system are properly sealed. Reference *Acceptable Sealants to use with LaHabra Wall Systems* Technical Bulletin for a list of sealants.
- Provide continuous air seal around perimeter of penetration prior to EPS insulation board application. Reference *Acceptable Sealants for use with Finestop RA/RS/ VB* Technical Bulletin for a list of sealants.
- Do not apply finish to areas that will receive sealant.

18 0524

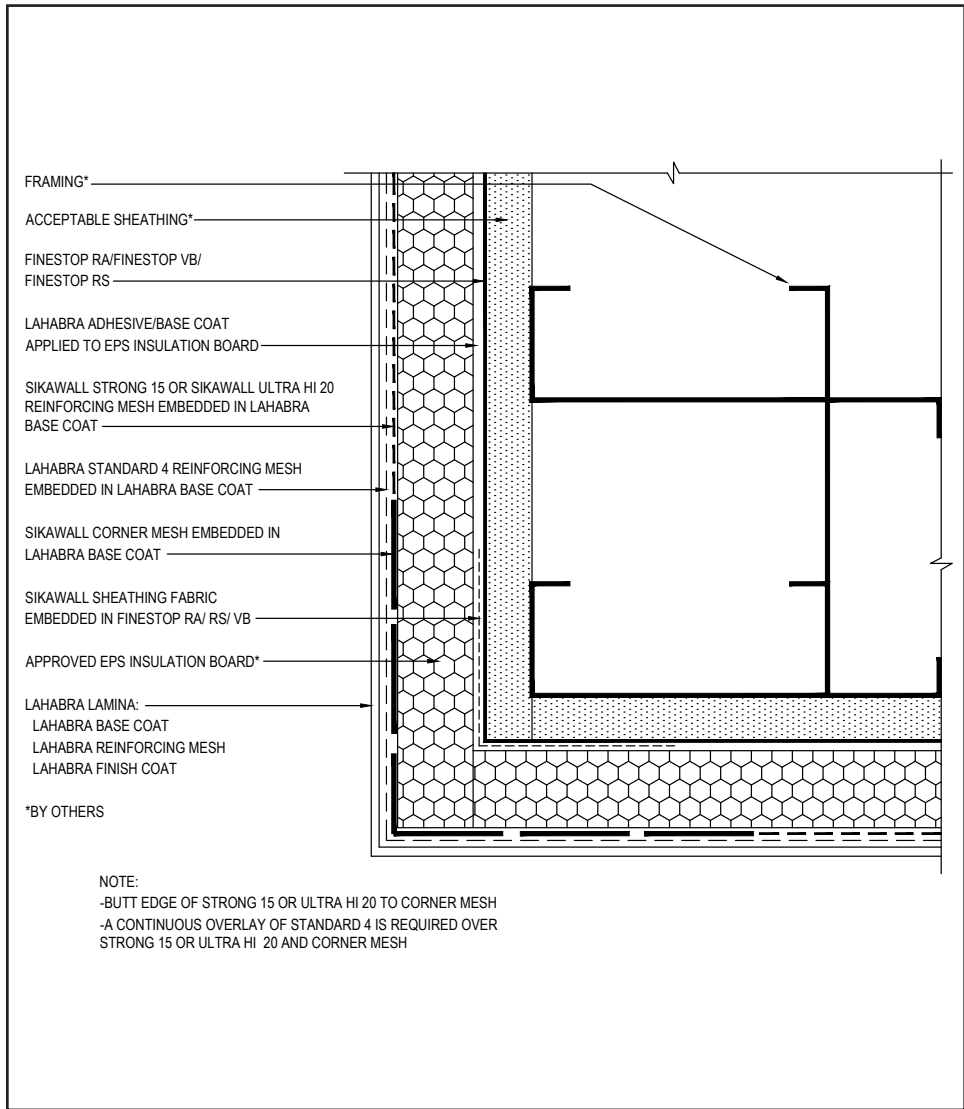
(*NOTE: BY OTHERS)

The details within are the latest recommendations and are represented in good faith by Sika Corporation US (hereinafter Sika). The details are subject to change without notice. Sika accepts no liability for the end use of the details. For conditions not shown, consult Sika for review of specific details.

- Install Sika materials in accordance with current installation instructions.
- Unsatisfactory conditions shall be reported to the General Contractor and corrected before the application of Sika products.

Pebbletex Secondary Weather Barrier Design

TYPICAL CORNER MESH APPLICATION WITH STRONG 15 OR ULTRA HI 20



- Butt SikaWall Ultra HI 20 reinforcing mesh at all adjoining edges including corners, do n
- SikaWall Ultra HI 20 and Standard reinforcing mesh are embedded in two separate layers of base coat. Allow the first base coat layer with Ultra HI 20 Reinforcing Mesh to dry prior to application of the second base coat layer with Standard Reinforcing Mesh.

19 0524

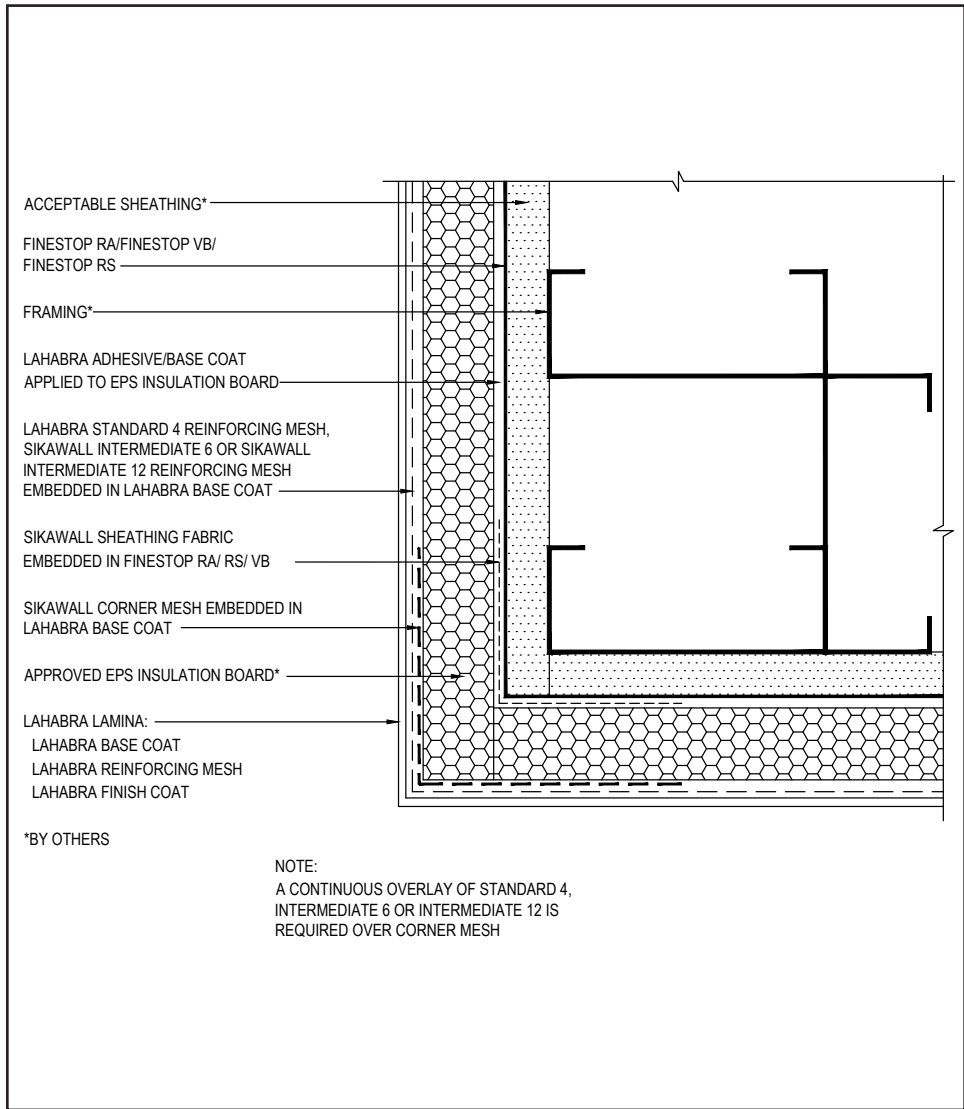
(*NOTE: BY OTHERS)

The details within are the latest recommendations and are represented in good faith by Sika Corporation US (hereinafter Sika). The details are subject to change without notice. Sika accepts no liability for the end use of the details. For conditions not shown, consult Sika for review of specific details.

- Install Sika materials in accordance with current installation instructions.
- Unsatisfactory conditions shall be reported to the General Contractor and corrected before the application of Sika products.

Pebbletex Secondary Weather Barrier Design

TYPICAL CORNER MESH APPLICATION WITH STANDARD 4, INTERMEDIATE 6 OR 12



- Ensure Standard, SikaWall Intermediate 6 or SikaWall Intermediate 12 Reinforcing Mesh is lapped a minimum of 8" (203 mm) around corners.
- SikaWall Corner Mesh on outside corner can be replaced, with Standard, SikaWall Intermediate 6 or SikaWall Intermediate 12, extended a minimum of 8" (203 mm) around corner from both sides (creating double layer of mesh at corner).

20 0524

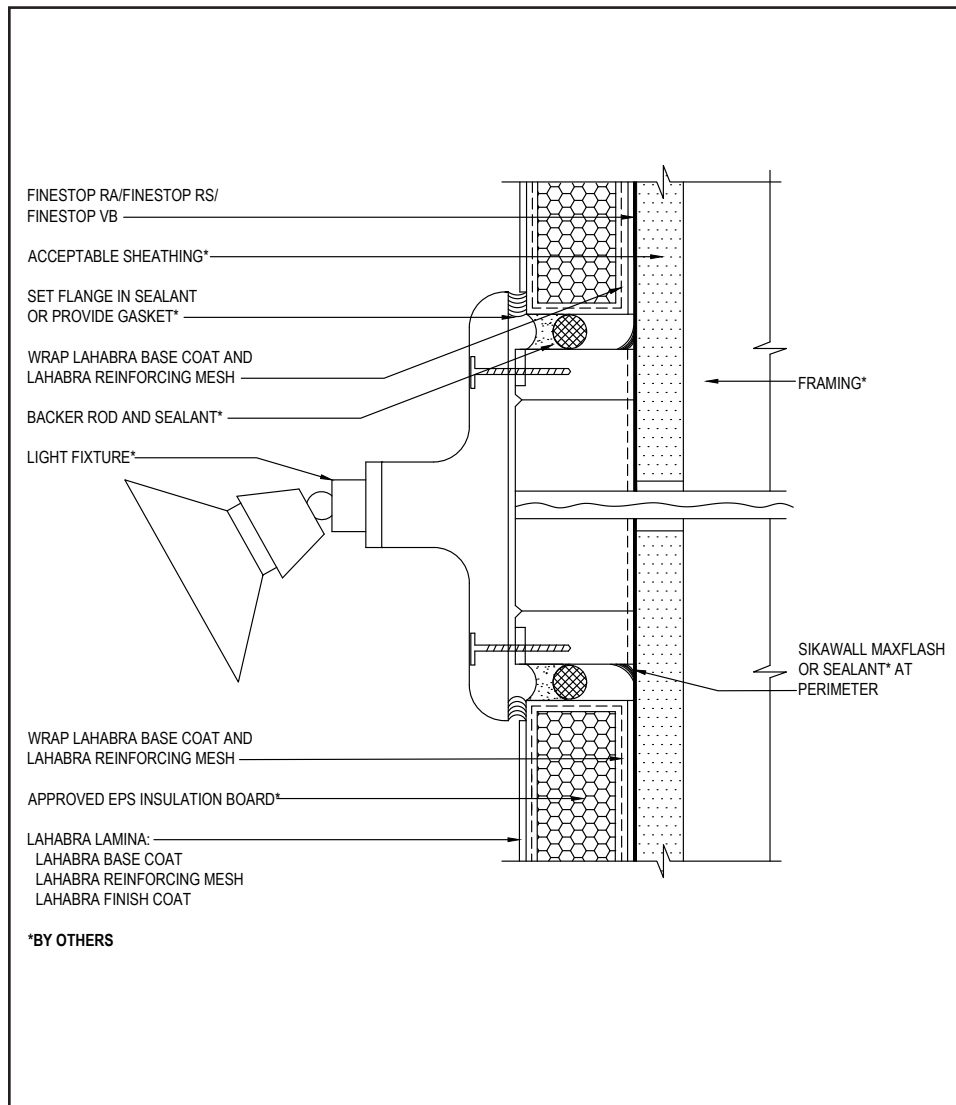
(*NOTE: BY OTHERS)

The details within are the latest recommendations and are represented in good faith by Sika Corporation US (hereinafter Sika). The details are subject to change without notice. Sika accepts no liability for the end use of the details. For conditions not shown, consult Sika for review of specific details.

- Install Sika materials in accordance with current installation instructions.
- Unsatisfactory conditions shall be reported to the General Contractor and corrected before the application of Sika products.

Pebbletex Secondary Weather Barrier Design

TYPICAL LIGHT FIXTURE



21 0524

(*NOTE: BY OTHERS)

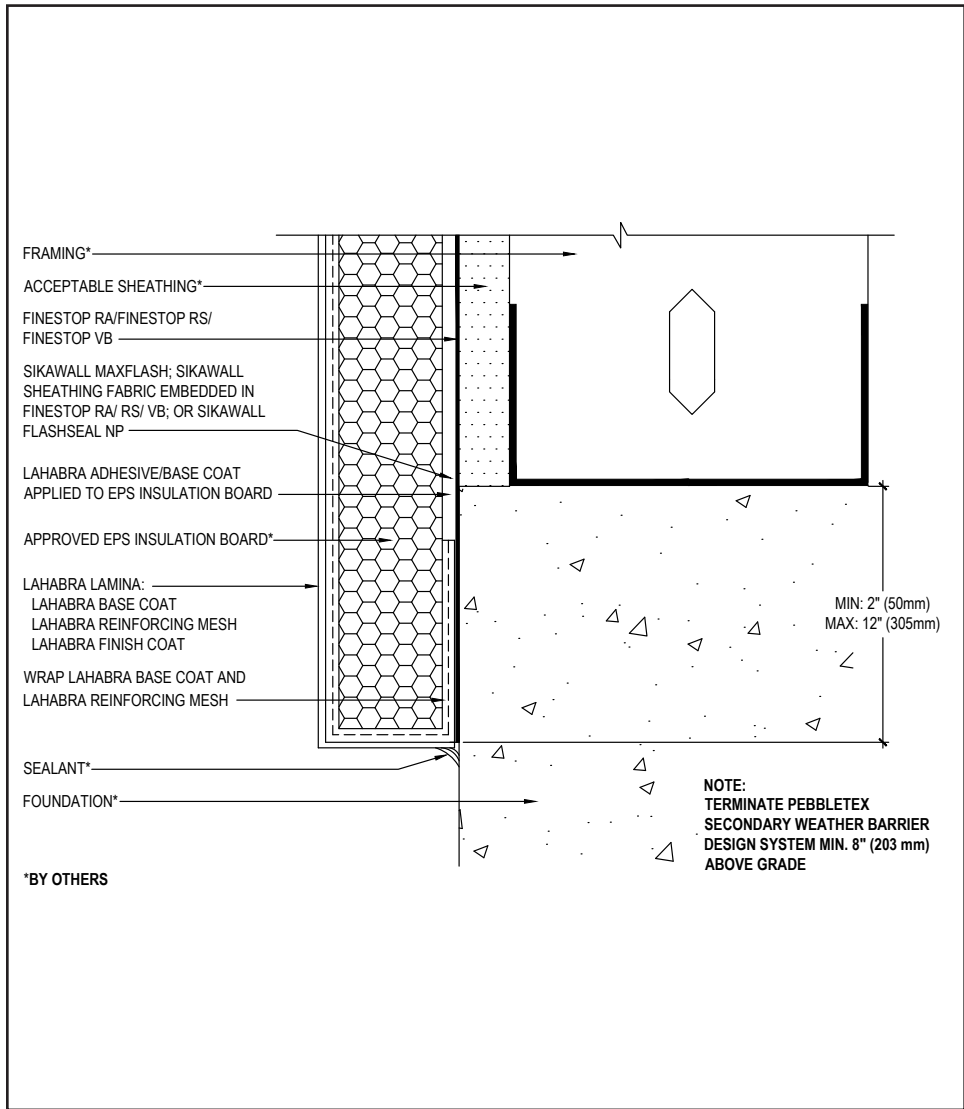
- All terminations must be fully encapsulated with mesh reinforced base coat. Extend reinforcing mesh a minimum of 2½" onto back of insulation board.
- Ensure all penetrations into the system are properly sealed.
- Reference *Acceptable Sealants to use with LaHabra Wall Systems* Technical Bulletin for a list of sealants.
- Provide continuous air seal around perimeter of penetration prior to EPS insulation board application. Reference *Acceptable Sealants for use with Finestop RA/RS/VB* Technical Bulletin for a list of sealants.

The details within are the latest recommendations and are represented in good faith by Sika Corporation US (hereinafter Sika). The details are subject to change without notice. Sika accepts no liability for the end use of the details. For conditions not shown, consult Sika for review of specific details.

- Install Sika materials in accordance with current installation instructions.
- Unsatisfactory conditions shall be reported to the General Contractor and corrected before the application of Sika products.

Pebbletex Secondary Weather Barrier Design

TYPICAL TERMINATION AT FOUNDATION



- All terminations must be fully encapsulated with mesh reinforced base coat. Extend reinforcing mesh a minimum of 2½" onto back of insulation board.
- Terminate system a minimum of 6" (152 mm) above grade.
- Extend system a minimum of 2" (50 mm) and a maximum of 12" (305 mm) at the sole plate foundation transition.
- Apply SikaWall MaxFlash, Flash Seal NP or Sheathing Fabric embedded in Finestop at transition from sheathing to concrete.

22 0524

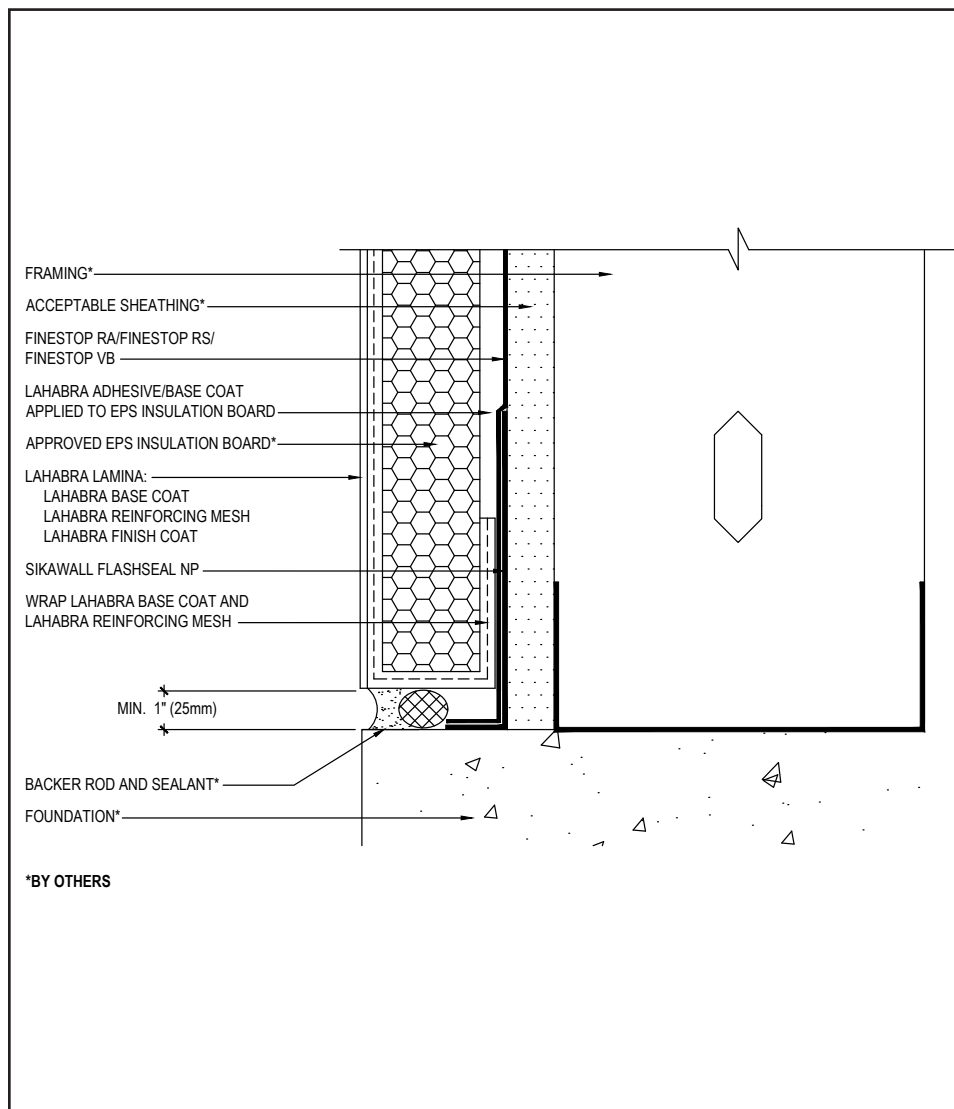
(*NOTE: BY OTHERS)

The details within are the latest recommendations and are represented in good faith by Sika Corporation US (hereinafter Sika). The details are subject to change without notice. Sika accepts no liability for the end use of the details. For conditions not shown, consult Sika for review of specific details.

- Install Sika materials in accordance with current installation instructions.
- Unsatisfactory conditions shall be reported to the General Contractor and corrected before the application of Sika products.

Pebbletex Secondary Weather Barrier Design

TYPICAL TERMINATION AT FOUNDATION (FLUSH)



- All terminations must be fully encapsulated with mesh reinforced base coat. Extend reinforcing mesh a minimum of 2½" onto back of insulation board.
- Do not apply finish to areas that will receive sealant.
- Reference *Acceptable Sealants for use with LaHabra Wall System* Technical Bulletin for a list of sealants.

23 0524

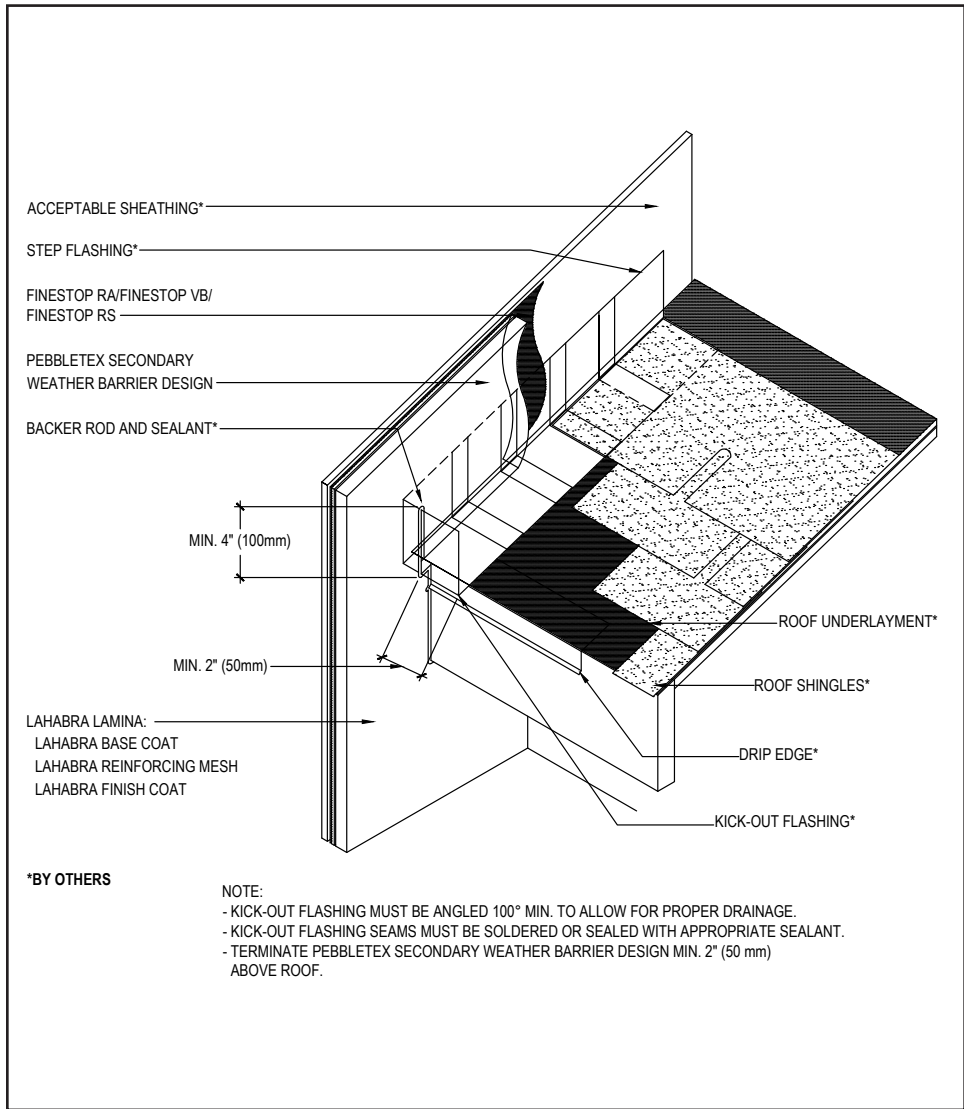
(*NOTE: BY OTHERS)

The details within are the latest recommendations and are represented in good faith by Sika Corporation US (hereinafter Sika). The details are subject to change without notice. Sika accepts no liability for the end use of the details. For conditions not shown, consult Sika for review of specific details.

- Install Sika materials in accordance with current installation instructions.
- Unsatisfactory conditions shall be reported to the General Contractor and corrected before the application of Sika products.

Pebbletex Secondary Weather Barrier Design

TYPICAL KICK-OUT FLASHING AT SLOPED ROOF



- All terminations must be fully encapsulated with mesh reinforced base coat. Extend reinforcing mesh a minimum of 2½" onto back of insulation board.
- Terminate system a minimum of 2" (50 mm) above sloped roof.
- Ensure step flashing is a minimum of 2" (50 mm) behind system.
- Kick-out flashing shall be a minimum of 4" (102 mm) in height.
- Do not apply finish to areas that will receive sealant.
- Reference *Acceptable Sealants for use with LaHabra Wall Systems* Technical Bulletin for a list of sealants.

24 0524

(*NOTE: BY OTHERS)

The details within are the latest recommendations and are represented in good faith by Sika Corporation US (hereinafter Sika). The details are subject to change without notice. Sika accepts no liability for the end use of the details. For conditions not shown, consult Sika for review of specific details.

- Install Sika materials in accordance with current installation instructions.
- Unsatisfactory conditions shall be reported to the General Contractor and corrected before the application of Sika products.

LIMITED WARRANTY NOTICE

Prior to each use of any product of Sika Corporation, its subsidiaries or affiliates ("SIKA"), the user must always read and follow the warnings and instructions on the product's most current product label, Product Data Sheet and Safety Data Sheet which are available at usa.sika.com/lahabra or by calling our Technical Service Department at +1 (800) 589-1336.

Nothing contained in any SIKA literature or materials relieves the user of the obligation to read and follow the warnings and instructions for each SIKA product as set forth in the current product label, Product Data Sheet and Safety Data Sheet prior to use of the SIKA product.

SIKA warrants this product for one year from date of installation to be free from manufacturing defects and to meet the technical properties on the current Product Data Sheet if used as directed within the product's shelf life. User determines suitability of product for intended use and assumes all risks. User's and/or buyer's sole remedy shall be limited to the purchase price or replacement of this product exclusive of any labor costs. NO OTHER WARRANTIES EXPRESS OR IMPLIED SHALL APPLY INCLUDING ANY WARRANTY OF MERCHANTABILITY OR FITNESS FOR A PARTICULAR PURPOSE. SIKA SHALL NOT BE LIABLE UNDER ANY LEGAL THEORY FOR SPECIAL OR CONSEQUENTIAL DAMAGES. SIKA SHALL NOT BE RESPONSIBLE FOR THE USE OF THIS PRODUCT IN A MANNER TO INFRINGE ON ANY PATENT OR ANY OTHER INTELLECTUAL PROPERTY RIGHTS HELD BY OTHERS. Sale of SIKA products are subject to the Terms and Conditions of Sale which are available at usa.sika.com.

For the most current version of this literature, please visit our website at usa.sika.com/lahabra.

Sika Corporation

201 Polito Avenue
Lyndhurst, NJ 07071 USA
Customer Service +1 (800) 433-9517
Technical Service +1 (800) 589-1336
usa.sika.com/lahabra

Rev May 2024

BUILDING TRUST

