

# Fastwall WaterMaster with Drain Mat Stucco System

A premium cement plaster stucco system with enhanced water management featuring Finestop air/water-resistive barrier.

## SYSTEM DESCRIPTION

LaHabra Fastwall WaterMaster with Drain Mat Stucco is an enhanced water management stucco system that offers design flexibility and aesthetic appeal. It utilizes LaHabra Finestop liquid applied air/water-resistive barriers and SikaWall Drainage Mat DF to provide a premium level of protection of the sheathing and cavity against moisture and air intrusion. Optional LaHabra base coat and reinforcing mesh and/or elastomeric finish are available for superior crack suppression.

## USES

New or retrofit residential, institutional and commercial construction such as hotels, hospitals, retail centers, schools, multi-family apartments and condominiums, and government facilities. May be used in fire-resistance-rated construction and in any construction type, including IBC Types I through V, when installed in accordance with LaHabra's instructions.

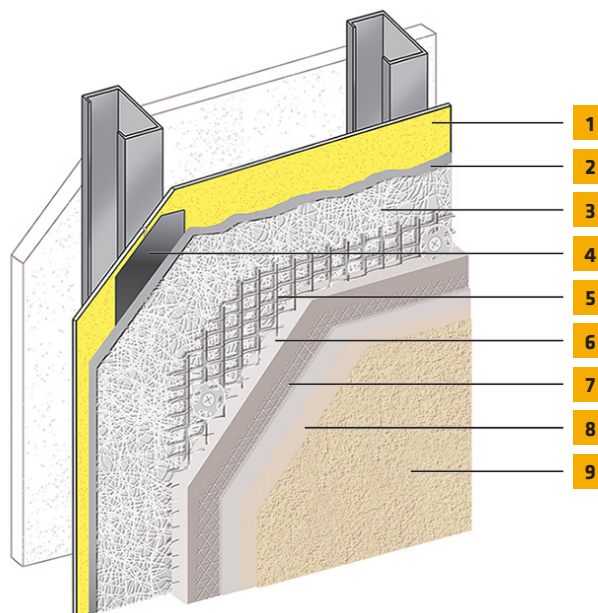
## ACCEPTABLE SUBSTRATES

Poured concrete/unit masonry; ASTM C1177 type sheathings, including DensGlass™ exterior sheathing, DensElement (sheathing only), eXP™ sheathing, GlasRoc™ sheathing, Securock™ glass-mat sheathing, Weather Defense™ Platinum sheathing, GreenGlass™ sheathing; cement-boards (ASTM C1325 Type A Exterior) including PermaBase™ cement-board; untreated Exposure I or exterior plywood sheathing (grade C-D or better); untreated Exposure I OSB, Huber Zip (sheathing only); Fire Treated wood sheathing; Pyro-Guard® and Dricon® plywood and FlameBlock® OSB; gypsum sheathing (ASTM C79/ASTM C1396).

## CODE COMPLIANCE

Document	Description
ESR-2564 - System Report	Complies with IBC, IRC and Florida Building Code.
CCRR-0249 - Permalath 1000 Report	Complies with IBC, IRC and Florida Building Code.
ICC-ESR 2986 (Finestop RA/VB)	Air/water-resistive barrier*
Air Barrier Association of America recognized (Finestop RA/VB)	Can be used on projects where ABAA recognized air barriers are specified

\*Finestop RA/RS/VB can be used behind all claddings where more than one wall system is specified, creating one continuous AWRB system. This is appropriate whenever Fastwall WaterMaster with Drain Mat Stucco is used with other cladding types on a multi-clad building.



1. Acceptable substrate\*
2. Finestop RA/RS/VB
3. SikaWall Drainage Mat DF
4. Approved SikaWall Joint Reinforcement: MaxFlash, Sheathing Fabric embedded in Finestop RA/RS/VB or Flash Seal NP
5. SikaWall Permalath 1000 or Metal Plaster Base\*
6. Sika Stucco Base
7. LaHabra Crack Suppression: Standard Mesh 4 or SikaWall SRT Mesh embedded in LaHabra Base Coat or SikaWall Stucco Surface Leveler (Optional)
8. SikaWall Stucco Primer (Optional)
9. LaHabra Finish

\*By Others

## ENHANCED CRACK RESISTANCE OPTIONS

Good: SikaWall Maxlastic Finish

Better: SikaWall SRT Mesh with LaHabra base coat or SikaWall Stucco Surface Leveler

Best: SikaWall SRT Mesh with LaHabra base coat or SikaWall Stucco Surface Leveler and SikaWall Maxlastic Finish.

# Fastwall WaterMaster Drain Mat Stucco System

## DESIGN CONSIDERATIONS

- Fluid applied air/water-resistive barrier provides a durable, seamless secondary moisture protection.
- Three-dimensional SikaWall Drainage Mat DF provides a drainage plane for maximum drainage and drying performance.
- SikaWall PermaLath 1000 self-furred glass fiber reinforcing lath that will not rust.
- Factory prepared SikaWall Stucco Base minimizes potential site mixing errors; improves quality control and provides a single source warranty.
- LaHabra acrylic modified base coat over StuccoBase enhances water resistance performance and finish coat aesthetics.
- Elastomeric finish coat bridges hairline cracks and reinforcing mesh option further enhances crack suppression.
- Resistant to impact and punctures; good for high traffic areas.
- Use only for above grade vertical walls. Not for use below grade or on surfaces subject to continuous or intermittent immersion in water or hydrostatic pressure. System must terminate a minimum of 4" above raw earth and 2" above paved surfaces.
- Wide selection of finish textures, standard and unlimited custom color provides design flexibility with numerous design options.

## MATERIAL SUBSTITUTION

Material substitution will adversely affect system performance and will void all warranty coverage unless approved in writing by Sika Facades' Technical Service.

## WARRANTY

Prior to each use of any product of Sika Corporation, its subsidiaries or affiliates ("SIKA"), the user must always read and follow the warnings and instructions on the product's most current product label, Product Data Sheet and Safety Data Sheet which are available at [usa.sika.com/lahabra](http://usa.sika.com/lahabra) or by calling SIKA Facades' Technical Service Department at 1-800-226-2424. Nothing contained in any SIKA literature or materials relieves the user of the obligation to read and follow the warnings and instructions for each SIKA product as set forth in the current product label, Product Data Sheet and Safety Data Sheet prior to use of the SIKA product.

SIKA warrants this product for one year from date of installation to be free from manufacturing defects and to meet the technical properties on the current Product Data Sheet if used as directed within the product's shelf life. User determines suitability of product for intended use and assumes all risks. User's and/or buyer's sole remedy shall be limited to the purchase price or replacement of this product exclusive of any labor costs. NO OTHER WARRANTIES EXPRESS OR IMPLIED SHALL APPLY INCLUDING ANY WARRANTY OF MERCHANTABILITY OR FITNESS FOR A PARTICULAR PURPOSE. SIKA SHALL NOT BE LIABLE UNDER ANY LEGAL THEORY FOR SPECIAL OR CONSEQUENTIAL DAMAGES. SIKA SHALL NOT BE RESPONSIBLE FOR THE USE OF THIS PRODUCT IN A MANNER TO INFRINGE ON ANY PATENT OR ANY OTHER INTELLECTUAL PROPERTY RIGHTS HELD BY OTHERS. Sale of SIKA products are subject to the Terms and Conditions of Sale which are available at [usa.sika.com](http://usa.sika.com).