

Senergy Platinum CI Stucco Plus

A continuously insulated stucco system featuring Senershield-R/-RS/-VB air/water-resistive barrier

SYSTEM DESCRIPTION

Senergy Platinum CI Stucco Plus is a continuously insulated stucco system providing a variety of rigid insulation board options to optimize thermal performance. The system uses Senergy liquid applied air/water-resistive barriers provide a premium level of protection of the sheathing and cavity against moisture and air intrusion. Optional Senergy Base Coat and SikaWall SRT reinforcing mesh are available for superior crack suppression.

USES

For exterior walls in new and retrofit commercial, institutional and residential construction when a continuous high effective R-value is needed to meet energy or eco-efficiency standards, and/or when a rainscreen is desired or required to satisfy code issues related to drainage.

ACCEPTABLE SUBSTRATES

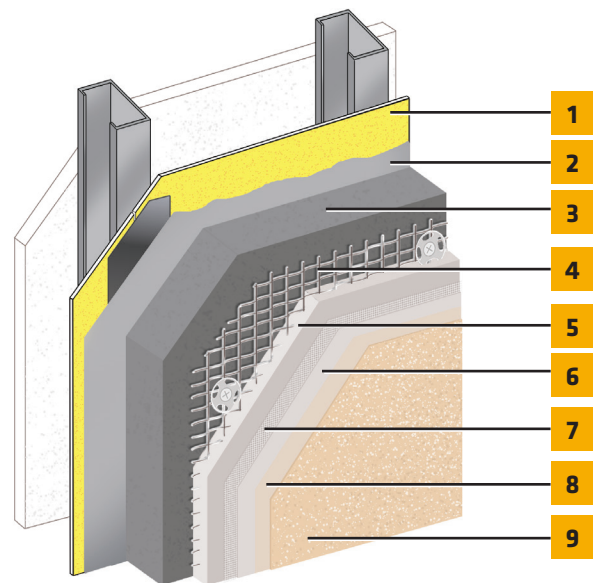
ASTM C1177 type sheathings, including DensGlass™ exterior sheathing, eXP™ sheathing, GlasRoc® sheathing, Securock™ glass-mat sheathing, Weather Defense™ Platinum sheathing, and GreenGlass® sheathing. PermaBase™ cement-board by National Gypsum and other cement-boards (ASTM C1325 Type A Exterior). Untreated Exposure I or exterior plywood sheathing (grade C-D or better). Untreated Exposure I OSB. Huber Zip Sheathing (sheathing only). Gypsum sheathing (ASTM C79/ASTM C1396). Poured concrete/unit masonry.

ADVANTAGES

- Highly energy efficient, easy to specify design that meets ASHRAE design standards and IGCC/IECC code requirements for the use of continuous insulation.
- Provides a drainage plane for directing incidental moisture out of the wall assembly.
- Fluid applied air/water-resistive barrier provides a durable, seamless secondary moisture protection.
- Seamless wall surface provides high resistance to potential water intrusion from rain and other environmental sources.
- Available SikaWall Permalath 1000 self-furred glass fiber reinforcing lath that will not rust.
- Resistant to impact and punctures; good for high traffic areas.
- Provides design flexibility with numerous design options.

MATERIAL SUBSTITUTION

Material substitution will adversely affect system performance and will void all warranty coverage unless approved in writing by Sika Facades.



1. Acceptable Sheathing*
2. Senershield-R/-RS/-VB
3. Approved Rigid Insulation Board*
4. SikaWall Permalath 1000 or Metal Plaster Base*
5. SikaWall Stucco Base
6. Senergy Base Coat (Optional)
7. SikaWall SRT Mesh (Optional)
8. SikaWall Stucco Prime (Optional)
9. Senergy Finish

*By Others

ENHANCED CRACK RESISTANCE OPTIONS

Good: Sikalall® Maxlastic Finish

Better: SikaWall® SRT Mesh with Senergy base coat or SikaWall Stucco Surface Leveler

Best: SikaWall® SAT Mesh with Senergy base coat or SikaWall Stucco Surface Leveler and SikaWall Maxlastic Finish

Senergy Platinum CI Stucco Plus

Senergy Platinum CI Stucco Plus Test Results Complies with AC 11

TEST	METHOD	RESULT
Accelerated weathering	ASTM G153	No deleterious effects after 2000 hours viewed under 5x magnification.
Water Resistance	ASTM D2247	No deleterious effects at 14 day exposure.
Intermediate Scale Multi-story Fire Test	UBC Standard 26-9/NFPA 285	Met test criteria
Radiant heat exposure	NFPA 268	Met test criteria
Surface burning	ASTM E 84	System Components. Flame spread <25; Smoke developed <450
Methods for fire tests of building construction and materials	ASTM E119	1 hour rating with maximum R10 NEOPOR insulation
Behavior of materials in a vertical tube furnace at 750° C	ASTM E136	SikaWall Stucco Base with SikaWall Permalath 1000 specimens met the weight loss criteria for passing the test.
Drainage efficiency	ASTM E2273	Exceeds 90% minimum
Salt spray resistance	ASTM B117	No deleterious effects at 300 hours exposure period.
Freeze-thaw resistance	AC11	No deleterious effects after 10 cycles viewed under 5x magnification.

DESIGN CONSIDERATIONS

- Maximum allowable deflection L/360, based on structural properties only.
- The design wind load shall not exceed the system's allowable wind load as stated in applicable code reports.
- Details shall conform with Sika Facades recommendations and shall be consistent with the project requirements.
- Control joints and trim accessories required. Control joint placement is required in the Senergy Platinum CI Stucco Plus wall system every 144 ft² per ASTM C1063.
- Consult the framing and sheathing manufacturer for design and application considerations.
- Expansion joints are required in the system where they exist in the substrate, where the system adjoins dissimilar construction, at changes in substrates and at floor lines in multilevel wood frame construction.
- System shall terminate at expansion joints.
- Sealant joints shall be detailed and installed per sealant manufacturer's recommendations.
- A minimum 6:12 slope is required on all horizontal surfaces greater than 1".
- Backer rod, sealant and flashing are required at door and window openings.

WARRANTY

Prior to each use of any product of Sika Corporation, its subsidiaries or affiliates ("SIKA"), the user must always read and follow the warnings and instructions on the product's most current product label, Product Data Sheet and Safety Data Sheet which are available at usa.sika.com/senergy or by calling Sika Facades' Technical Service Department at 1-800-589-1336. Nothing contained in any SIKA literature or materials relieves the user of the obligation to read and follow the warnings and instructions for each SIKA product as set forth in the current product label, Product Data Sheet and Safety Data Sheet prior to use of the SIKA product.

SIKA warrants this product for one year from date of installation to be free from manufacturing defects and to meet the technical properties on the current Product Data Sheet if used as directed within the product's shelf life. User determines suitability of product for intended use and assumes all risks. User's and/or buyer's sole remedy shall be limited to the purchase price or replacement of this product exclusive of any labor costs. NO OTHER WARRANTIES EXPRESS OR IMPLIED SHALL APPLY INCLUDING ANY WARRANTY OF MERCHANTABILITY OR FITNESS FOR A PARTICULAR PURPOSE. SIKA SHALL NOT BE LIABLE UNDER ANY LEGAL THEORY FOR SPECIAL OR CONSEQUENTIAL DAMAGES. SIKA SHALL NOT BE RESPONSIBLE FOR THE USE OF THIS PRODUCT IN A MANNER TO INFRINGE ON ANY PATENT OR ANY OTHER INTELLECTUAL PROPERTY RIGHTS HELD BY OTHERS. Sale of SIKA products are subject to the Terms and Conditions of Sale which are available at usa.sika.com.

Sika Corporation
 201 Polito Avenue
 Lyndhurst, NJ 07071 USA
 Customer Service +1 (800) 433-9517
 Technical Service +1 (800) 589-1336
usa.sika.com/senergy

Rev April 2024

