

## SYSTEM DATA SHEET

# PAREX® NuTech Stucco MVS

## Cement Board Stucco System with Masonry Veneer Adhesive

### PRODUCT DESCRIPTION

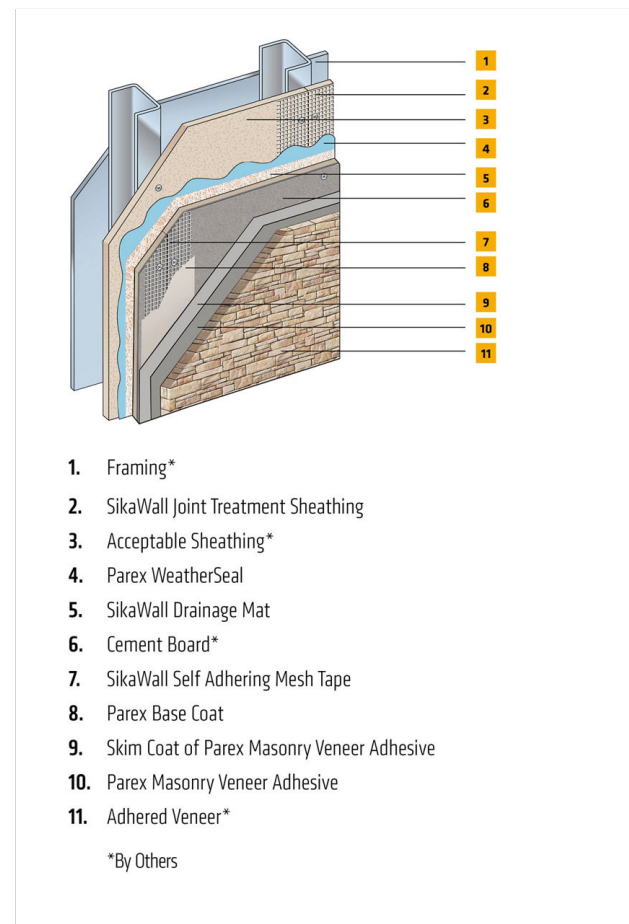
PAREX® NuTech Stucco MVS is a high-impact, water-drainage wall cladding system that incorporates Parex WeatherSeal liquid applied air water-resistive barrier and features a cement board (ASTM C1325) core installed with a polymer-modified base coat, fiberglass reinforcing mesh, and Parex Masonry Veneer Adhesive used to adhere natural and manufactured stone, tile, and thin brick veneer.

### USES

Vertical exterior walls in new or retrofit commercial, institutional and residential construction such as hotels, hospitals, retail, schools, multifamily apartments and condominiums, and government facilities.

### CHARACTERISTICS / ADVANTAGES

- For use on non-combustible construction types
- For use with fire resistance rated walls
- Continuous Insulation
- Built in drainage



## SYSTEM INFORMATION

### Compatibility

Material substitution will adversely affect system performance and will void all warranty coverage unless approved in writing by Sika Facades Technical Service Team.

## APPLICATION INFORMATION

### Substrates

**Acceptable Substrates:**  
Cement Board (ASTM C1325)

## BASIS OF PRODUCT DATA

Results may differ based upon statistical variations depending upon mixing methods and equipment, temperature, application methods, test methods, actual site conditions and curing conditions.

## LIMITATIONS

- **Users must read the most current Product Data Sheets for each system component before using any products and follow all application instructions and cautions**
- Use only for above grade vertical walls.
- Additives are not permitted for any product unless approved in writing by Sika Facades Technical Service Team.
- All products must be installed at minimum 40 °F (4 °C) ambient and substrate temperatures unless otherwise noted on specific Product Data Sheets.
- Protect all work from precipitation for at least 24-hours after application.
- All products must be stored in accordance with specific instructions on relevant Product Data Sheets.
- All substrates must be clean, dry and sound.
- Maximum substrate design deflection is L/360. Substrate must be level within ¼" in 10' (6 mm in 3 m) Locate control joints approximately every 600 ft<sup>2</sup> (56 m<sup>2</sup>) of wall surface area with maximum uncontrolled length or width of 24 lin. ft. (7 m) and a maximum uncontrolled length-to-width ratio of 2 1/2:1 Cement board must satisfy ASTM C1325 Type A Exterior, minimum ½" Expansion joints are required in the system where they exist in the substrate, where the system adjoins dissimilar construction, at changes in substrates, at floor lines in multilevel wood frame construction, and where movement is anticipate
- Contact Sika Facades' Technical Service Department at 1-800-226-2424 for additional information.

## ENVIRONMENTAL, HEALTH AND SAFETY

For further information and advice regarding transportation, handling, storage and disposal of chemical products, user should refer to the actual Safety Data Sheets containing physical, environmental, toxicological and other safety related data. User must read the current actual Safety Data Sheets before using

any products. In case of an emergency, call CHEMTREC at 1-800-424-9300, International 703-527-3887.

## LEGAL DISCLAIMER

- KEEP CONTAINER TIGHTLY CLOSED
- KEEP OUT OF REACH OF CHILDREN
- NOT FOR INTERNAL CONSUMPTION
- FOR INDUSTRIAL USE ONLY
- FOR PROFESSIONAL USE ONLY

Prior to each use of any product of Sika Corporation, its subsidiaries or affiliates ("SIKA"), the user must always read and follow the warnings and instructions on the product's most current product label, Product Data Sheet and Safety Data Sheet which are available at [usa.sika.com](http://usa.sika.com) or by calling Sika's Technical Service Department at 1-800-933-7452. Nothing contained in any Sika literature or materials relieves the user of the obligation to read and follow the warnings and instructions for each Sika product as set forth in the current product label, Product Data Sheet and Safety Data Sheet prior to use of the Sika product.

Sika warrants this product for one year from date of installation to be free from manufacturing defects and to meet the technical properties on the current Product Data Sheet if used as directed within the product's shelf life. User determines suitability of product for intended use and assumes all risks. User's and/or buyer's sole remedy shall be limited to the purchase price or replacement of this product exclusive of any labor costs. **NO OTHER WARRANTIES EXPRESS OR IMPLIED SHALL APPLY INCLUDING ANY WARRANTY OF MERCHANTABILITY OR FITNESS FOR A PARTICULAR PURPOSE. SIKA SHALL NOT BE LIABLE UNDER ANY LEGAL THEORY FOR SPECIAL OR CONSEQUENTIAL DAMAGES. SIKA SHALL NOT BE RESPONSIBLE FOR THE USE OF THIS PRODUCT IN A MANNER TO INFRINGE ON ANY PATENT OR ANY OTHER INTELLECTUAL PROPERTY RIGHTS HELD BY OTHERS.**

Sale of Sika products are subject to the Terms and Conditions of Sale which are available at <https://usa.sika.com/en/group/SikaCorp/termsandconditions.html> or by calling 1-800-933-7452. Sika warrants this product for one year from date of

installation to be free from manufacturing defects and to meet the technical properties on the current Product Data Sheet if used as directed within the product's shelf life. User determines suitability of product for intended use and assumes all risks. User's and/or buyer's sole remedy shall be limited to the purchase price or replacement of this product exclusive of any labor costs. NO OTHER WARRANTIES EXPRESS OR IMPLIED SHALL APPLY INCLUDING ANY WARRANTY OF MERCHANTABILITY OR FITNESS FOR A PARTICULAR PURPOSE. SIKA SHALL NOT BE LIABLE UNDER ANY LEGAL THEORY FOR SPECIAL OR CONSEQUENTIAL DAMAGES. SIKA SHALL NOT BE RESPONSIBLE FOR THE USE OF THIS PRODUCT IN A MANNER TO INFRINGE ON ANY PATENT OR ANY OTHER INTELLECTUAL PROPERTY RIGHTS HELD BY OTHERS. Sale of SIKA products are subject to the Terms and Conditions of Sale which are available at [usa.sika.com](http://usa.sika.com).

**Sika Corporation**

201 Polito Avenue  
Lyndhurst, NJ 07071  
Phone: +1-800-933-7452  
Fax: +1-201-933-6225  
[usa.sika.com](http://usa.sika.com)



**System Data Sheet**

PAREX® NuTech Stucco MVS  
June 2025, Version 01.01  
021830950000242837

PAREXNuTechStuccoMVS-en-US-(06-2025)-1-1.pdf

