

SYSTEM DATA SHEET

PAREX® Panel System CI

Panelized CI Adhesively Adhered with Weather Barrier

PRODUCT DESCRIPTION

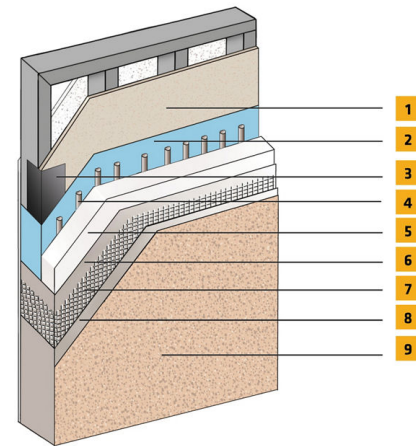
PAREX® Panel System CI is a continuously insulated moisture drainage wall cladding system. It features a Parex fluid-applied air/water resistive barrier, moisture drainage, optional SikaWall Ultra HI 20 reinforcing mesh and a wide range of finish options.

USES

PAREX® Panel System CI may be used in fire-resistance rated construction and in any construction type (IBC Types I through V), when installed in accordance with Sika instructions.

CHARACTERISTICS / ADVANTAGES

- For use with non-combustible construction types
- For use on fire resistance rated walls
- Continuous Insulation
- Unlimited building height



1. Acceptable Substrate*
2. Parex WeatherSeal
3. SikaWall Joint Treatment
4. Parex Adhesive
5. Approved EPS Insulation Board*
6. Parex Base Coat
7. Parex Reinforcing Mesh
8. Parex Base Coat
9. Parex Finish Coat

*(By Others)

APPROVALS / STANDARDS

Document	Code Description
ICC-ESR 1878	Complies with IBC and IRC
ASTM E2568 / AC 235	Complies with requirements
ASTM E119	Meets requirements for use on fire-resistance rated construction. Does not detract from fire rating of base wall
NFPA 285 and 268	Meets requirements for use on fire-resistance-rated construction and in any construction type, including IBC Types I through V
ICC-ESR 2045 (Parex WeatherSeal Spray and Roll-On)	Complies with IBC, IRC and IECC as an Air/water-resistive barrier*
Miami Dade NOAs	Meets Miami Dade hurricane requirements
ICC-ESR 2562	Complies with requirements

For testing results, please reference PAREX® Panel System CI

* Parex WeatherSeal Spray and Roll-On can be used behind all claddings where more than one wall system is specified, creating one continuous AWRB system. This is appropriate whenever PAREX® Panel System CI is used with other cladding types on a multi-clad building.

SYSTEM INFORMATION

Compatibility	Material substitution will adversely affect system performance and will void all warranty coverage unless approved in writing by Sika Facades Technical Service Team.
----------------------	---

APPLICATION INFORMATION

Substrates	Acceptable Substrates: Glass mat Gypsum Sheathing Gypsum Sheathing Exposure 1 OSB Cement Fiber Sheathing Concrete & Concrete Masonry CDX Plywood
-------------------	--

BASIS OF PRODUCT DATA

Results may differ based upon statistical variations depending upon mixing methods and equipment, temperature, application methods, test methods, actual site conditions and curing conditions.

LIMITATIONS

- Users must read the most current Product Data Sheets for each system component before using any products and follow all application instructions and cautions.
- For use on above grade vertical walls. System must terminate a minimum of 6" (152 mm) above grade.
- Compatible with SikaWall-1000 MaxGrip Veneer

System Data Sheet
PAREX® Panel System CI
June 2025, Version 01.01
021830950000242563

BUILDING TRUST



Adhesive and adhered veneer. Reference SenerPanel Channeled Adhesive CI Design with SikaWall-1000 MaxGrip Veneer Adhesive.

- Use SikaWall Strong 15 or Ultra HI 20 Reinforcing Mesh at ground floor and on other locations where high traffic is expected.
- All substrates must be clean, dry and sound without planar irregularities greater than 1/4" per 10' (6 mm per 3 m).
- Maximum deflection not to exceed L/240 under positive or negative design loads.
- Select a finish coat color with a light reflectance value (LRV) of 20% or higher. The use of dark colors (LRV less than 20%) is not recommended with EIFS that incorporate expanded polystyrene (EPS). EPS has a sustained service temperature limitation of approximately 165°F (74°C).
- Minimum slope for horizontal projections shall be 6:12 (27%) with a maximum length of 12" (30.5 cm)
- Contact Sika Facades' Technical Service Department at 1-800-226-2424 for additional information.

remedy shall be limited to the purchase price or replacement of this product exclusive of any labor costs. **NO OTHER WARRANTIES EXPRESS OR IMPLIED SHALL APPLY INCLUDING ANY WARRANTY OF MERCHANTABILITY OR FITNESS FOR A PARTICULAR PURPOSE. Sika SHALL NOT BE LIABLE UNDER ANY LEGAL THEORY FOR SPECIAL OR CONSEQUENTIAL DAMAGES. Sika SHALL NOT BE RESPONSIBLE FOR THE USE OF THIS PRODUCT IN A MANNER TO INFRINGE ON ANY PATENT OR ANY OTHER INTELLECTUAL PROPERTY RIGHTS HELD BY OTHERS.**

Sale of Sika products are subject to the Terms and Conditions of Sale which are available at <https://usa.sika.com/en/group/SikaCorp/termsandconditions.html> or by calling 1-800-933-7452.

ENVIRONMENTAL, HEALTH AND SAFETY

For further information and advice regarding transportation, handling, storage and disposal of chemical products, user should refer to the actual Safety Data Sheets containing physical, environmental, toxicological and other safety related data. User must read the current actual Safety Data Sheets before using any products. In case of an emergency, call CHEMTREC at 1-800-424-9300, International 703-527-3887.

LEGAL DISCLAIMER

- KEEP CONTAINER TIGHTLY CLOSED
- KEEP OUT OF REACH OF CHILDREN
- NOT FOR INTERNAL CONSUMPTION
- FOR INDUSTRIAL USE ONLY
- FOR PROFESSIONAL USE ONLY

Prior to each use of any product of Sika Corporation, its subsidiaries or affiliates ("SIKA"), the user must always read and follow the warnings and instructions on the product's most current product label, Product Data Sheet and Safety Data Sheet which are available at usa.sika.com or by calling SIKA's Technical Service Department at 1-800-933-7452. Nothing contained in any SIKA literature or materials relieves the user of the obligation to read and follow the warnings and instructions for each SIKA product as set forth in the current product label, Product Data Sheet and Safety Data Sheet prior to use of the SIKA product.

Sika Corporation

Sika warrants this product for one year from date of installation to be free from manufacturing defects and to meet the technical properties on the current Product Data Sheet if used as directed within the product's shelf life. User determines suitability of product for intended use and assumes all risks. User's and/or buyer's sole



System Data Sheet
PAREX® Panel System CI
June 2025, Version 01.01
021830950000242563

PAREXPanelSystemCI-en-US-(06-2025)-1-1.pdf

