

Surfacing Systems for Insulating Concrete Forms

Weather resistant surfacing system using a mesh-reinforced base coat and 100% acrylic polymer exterior finish.

SYSTEM DESCRIPTION

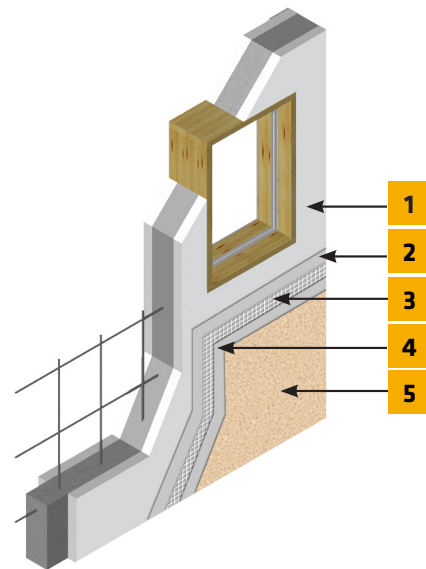
LaHabra Surfacing Systems for ICFs provide the desirable stucco look and aesthetic appeal over a variety of expanded polystyrene (EPS) insulating forms. The LaHabra Surfacing Systems are comprised of a reinforced base coat, optional primer and a 100% acrylic polymer finish. Depending upon the construction and composition of the form, the surfacing system might include additional EPS insulation boards and LaHabra adhesive/base coat.

USES

For exterior walls in residential, commercial and institutional ICF construction when a weather resistant, low maintenance “Stucco Look” wall finish is desired.

DESIGN CONSIDERATIONS

- Density of the forms shall not exceed 2 lbs per cubic ft.
- Surfacing Systems shall not serve as the foundation damp-proofing.
- Use high impact mesh for ground floor applications in high traffic areas.
- EPS special shapes such as moldings, cornices, quoins, ogees, etc. can be used to enhance design aesthetics. These can be integrated into the Surfacing System. They must be reinforced with LaHabra base coat and reinforcing mesh prior to application of the SikaWall Tinted Primer and LaHabra finish.
- (Optional) EPS board size is limited to 2' x 4'. The minimum thickness of EPS at any point on the wall can not be less than 3/4". Consider this when designing and installing reveals.
- Flashing at windows, doors, chimneys, transitions between walls and roof and at other points specified shall be installed in accordance with the component manufacturer's instructions.
- Do not run Surfacing Systems below grade; Surfacing Systems must terminate a minimum of 6" above grade.
- Repair any dings, dents and damaged form areas with the appropriate expanded insulation prior to the application of the Surfacing Systems. Do not fill damaged areas with base coat or cementitious products.
- Do not apply the Surfacing Systems directly to dimensional framing lumber/ blocking which might occur at window and door bucks, etc.
- Install the Surfacing Systems after the concrete has been cured for a minimum of seven (7) days.



1. ICF EPS Insulation Board*
2. LaHabra Base Coat
3. LaHabra Reinforcing Mesh
4. LaHabra Base Coat
5. LaHabra Finish Coat

* By Others

Surfacing Systems for Insulating Concrete Forms

INSULATION BOARDS

Adhesion Valuation: If EPS insulation board is required over forms, evaluate adhesion prior to start of project as follows:

- Using the appropriate Finestone adhesive/base coat, apply a 3/4" thick x 3" x 3" sample of expanded polystyrene insulation board to the ICF on the representative area(s) of forms including ties/furring strips.
- Allow the sample(s) to cure for a minimum of three (3) days prior to evaluation.
- Commercially available tensile test equipment such as the Comten Model 302N (813-823-7806) is available to remove and determine adhesion of the sample to the substrate. Remove the insulation board from the ICF and observe failure mode.
- The failure must occur cohesively within the expanded polystyrene insulation board sample for adhesion to be deemed acceptable.

WARRANTY

Prior to each use of any product of Sika Corporation, its subsidiaries or affiliates ("SIKA"), the user must always read and follow the warnings and instructions on the product's most current product label, Product Data Sheet and Safety Data Sheet which are available at usa.sika.com/lahabra or by calling SIKAFACADES' Technical Service Department at 1-800-589-1336. Nothing contained in any SIKAFACADES literature or materials relieves the user of the obligation to read and follow the warnings and instructions for each SIKAFACADES product as set forth in the current product label, Product Data Sheet and Safety Data Sheet prior to use of the SIKAFACADES product.

SIKAFACADES warrants this product for one year from date of installation to be free from manufacturing defects and to meet the technical properties on the current Product Data Sheet if used as directed within the product's shelf life. User determines suitability of product for intended use and assumes all risks. User's and/or buyer's sole remedy shall be limited to the purchase price or replacement of this product exclusive of any labor costs. NO OTHER WARRANTIES EXPRESS OR IMPLIED SHALL APPLY INCLUDING ANY WARRANTY OF MERCHANTABILITY OR FITNESS FOR A PARTICULAR PURPOSE. SIKAFACADES SHALL NOT BE LIABLE UNDER ANY LEGAL THEORY FOR SPECIAL OR CONSEQUENTIAL DAMAGES. SIKAFACADES SHALL NOT BE RESPONSIBLE FOR THE USE OF THIS PRODUCT IN A MANNER TO INFRINGE ON ANY PATENT OR ANY OTHER INTELLECTUAL PROPERTY RIGHTS HELD BY OTHERS. Sale of SIKAFACADES products are subject to the Terms and Conditions of Sale which are available at usa.sika.com.