

WE ARE SIKA

Sika is a specialty chemicals company with a leading position in the development and production of systems and products for bonding, sealing, damping, reinforcing and protecting in the building sector and the motor vehicle industry. Sika's product lines feature concrete admixtures, mortars, sealants and adhesives, structural strengthening systems, industrial flooring as well as roofing and waterproofing systems.

Our most current General Sales Conditions shall apply. Please consult the Product Data Sheets prior to any use and processing.

©Sika Corporation / 06.2298.5 / 12/2018

SIKA CORPORATION

201 Polito Avenue
Lyndhurst, NJ 07071
USA

CONTACT

Phone 201-933-8800
Fax 201-933-6225
usa.sika.com

BUILDING TRUST





SIKA COLD TEMPERATURE CAPABILITIES SYSTEMS AND SOLUTIONS

BUILDING TRUST



COLD TEMPERATURE CONSIDERATIONS

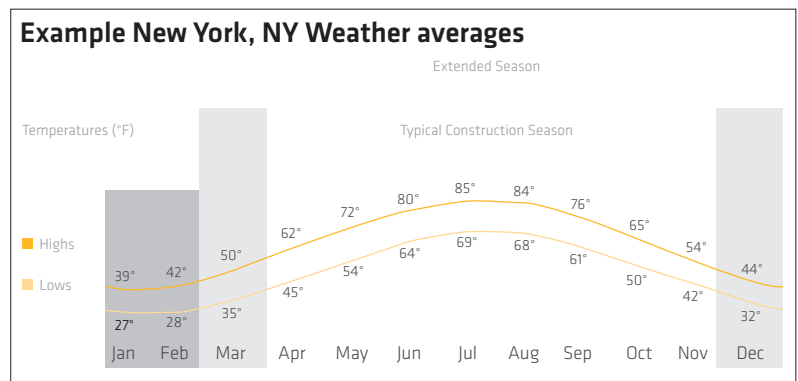
Challenges faced in many northern US cities each winter:

- Rush to complete projects before winter
- Projects must stop once the weather turns cold and restart once temperatures are warmer
- Project starts are delayed until the 'next construction season starts' (i.e. next spring)
- There is significant loss of productivity as contractors must retain key personnel despite having no active projects in order to have them available for the next construction season

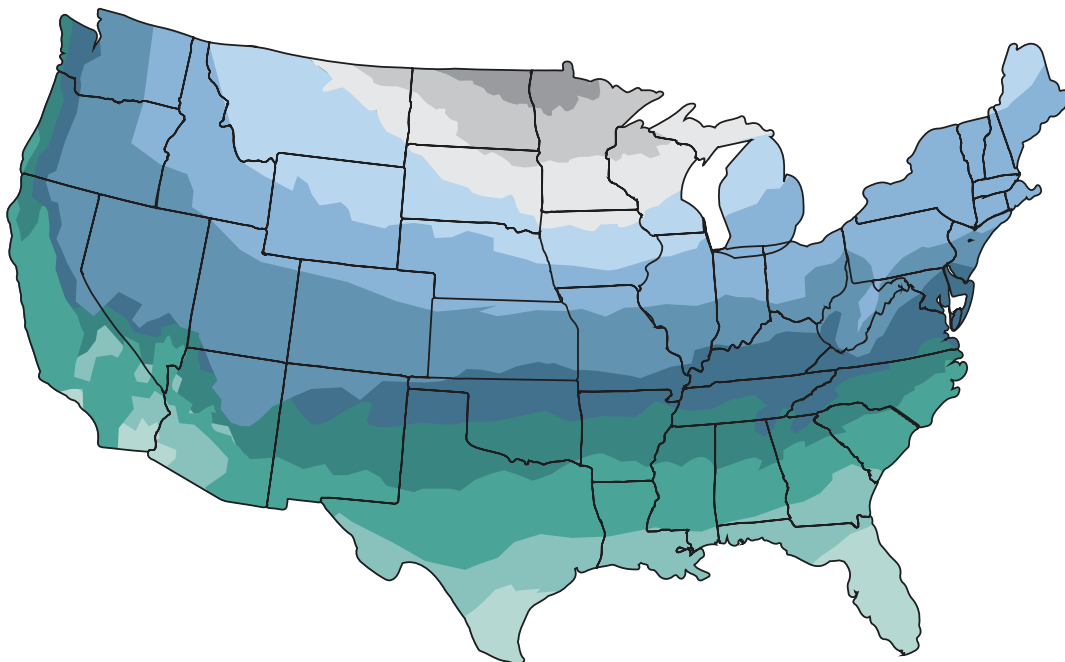
IMAGINE A REPAIR LINE OF PRODUCTS THAT ENABLE YOU TO KEEP WORKING THROUGHOUT THE WINTER

- Projects can continue, allowing for an earlier completion date
- Projects can start when the owner is ready, no need to wait until next spring
- Keep your key people working!

In many cities, the construction season starts April 1 and ends November 30. With Sika's line of winter grade products the season can be extended another 25% (8 months to 10 months) and even further if necessary!



USA Average Winter Temperatures



< 0.4°F
5°F – 10.4°F
10.4°F – 15.8°F
15.8°F – 21.2°F
21.2°F – 26.6°F
26.6°F – 32°F
32°F – 37.4°F
37.4°F – 42.8°F
42.8°F – 48.2°F
48.2°F – 53.6°F
> 53.6°F

CONCRETE REPAIR



SikaQuick® Winter Boost

- Additive for: SikaQuick-2500, SikaQuick VOH, SikaQuick-1000, SikaQuick-800, Sikacrete- 421 CI Rapid, SikaGrout 428 FS, SikaQuick EZ Patch, and SikaQuick FNP
- Easy to use, simply add to water then mix
- Good strength development at cold temperatures
- Allows repairs on colder substrates and in colder ambient air temperatures



Sika® AnchorFix®-2020

- Low temperature adhesive anchor system
- Fixing close to free edges
- Versatile range of embedment depths
- Anchoring without expansion forces
- Component volume ratio of 1:1
- Extended working time



Sika® Armatec® - 10 ZR

- Zinc-modified polyurethane reinforcing steel coating
- Significantly reduces corrosion
- One coat application, tack-free time is 1.5 hours at 75°F
- Easy to apply by roller, brush or spray
- Additive allows application down to 20°F



RESINS



Build and protect your civil and commercial projects year round with Sikagard and Sikadur materials. Sika's high performance epoxy Segmental Bridge Adhesives (SBA) are high-modulus, high-strength and low creep even at low temperatures. Sikagard protects the surface from chloride intrusion and corrosion from de-icing salts used heavily in winter months as well as increasing longevity of marine structures.

Sikadur®-31 SBA Cold Weather

- Easy handling, fast cure at temperatures below freezing
- High-modulus, high-strength, structural paste adhesive
- Easy to apply, non-sag paste for vertical applications
- Excellent adhesion to concrete, steel and most construction materials



Sikagard® SN-40

- 40% silane sealer for high penetration in cold weather
- Solvent based emulsion
- Economic and easy to use
- Reduces capillary water absorption, protection against driving rain and splashing on vertical areas



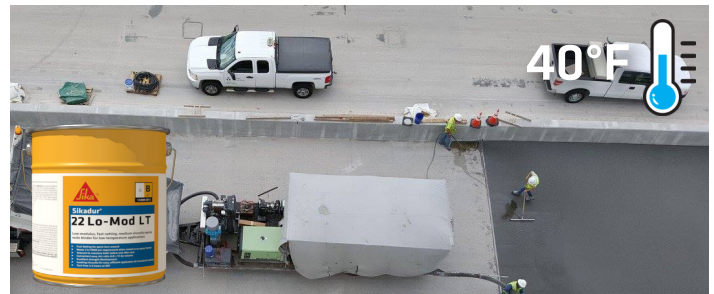
RESINS



Sikadur and SikaPronto resins can be applied at lower temperatures for both Bridge Deck Overlay (BDO) and High Friction Surface Treatment (HFST) applications. The ability to cure faster down to 40°F allows for more productivity and faster turn around for high speed projects on both concrete and asphalt. Extend the application season or accelerate projects with resins designed for low temperatures.

Sikadur®-22 Lo-Mod LT

- Epoxy resin binder for low-temperature applications
- Fast setting for quick turn around
- Meets 3 hr/1000 psi when mixed as an epoxy mortar
- Tolerant to moisture both before and after cure
- Tack-free in less than 3 hours at 50°F



SikaPronto®-500 PPC

- Polyester polymer concrete for bridge deck overlay, concrete patching and joint headers.
- Product provides rapid cure for faster return to service
- May be utilized across a wide temperature range
- Use with accelerator for greater control over traffic time



SEALANTS



Sikaflex® sealants are a complete range of one component moisture-cure and two component chemical-cure polyurethane sealants for overhead, vertical and horizontal joints. They offer long term thermal and dynamic movement capability for most joints with elastic durability of up to +100/ -50% joint movement.

Sikaflex®-2c NS Arctic

- Two-component polyurethane for extreme cold
- No pre-heating required before use
- Get projects done in extreme cold conditions
- Easy to mix, gun, and tool down to 15°F - material will not stiffen after mixed



TRAFFIC COATINGS



Sika provides comprehensive solutions to waterproofing problems with maximum protection. Sika's wide range of traffic coatings are designed to make concrete and masonry impermeable to water, while offering flexibility to handle all of your park deck waterproofing needs.

Sikalastic®-2900 (formerly known as MasterSeal®-2900)

- Allows you to work in FREEZING conditions - cures at 20°F
- SUPER FAST project turnaround time - 5 hours start to finish
- No waiting - trafficable 45 minutes after topcoat is applied
- EXTREME DURABILITY - use on helix and other high traffic areas

