

**PAREX<sup>®</sup>**



# WATERMASTER NC & FB CONTINUOUSLY INSULATED MINERAL WOOL SYSTEMS

**BUILDING TRUST**

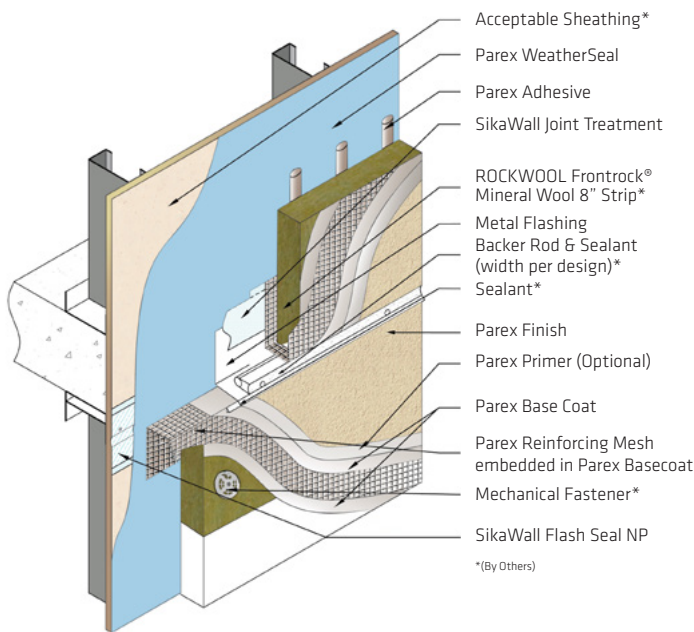


# PAREX WATERMASTER NC AND FB

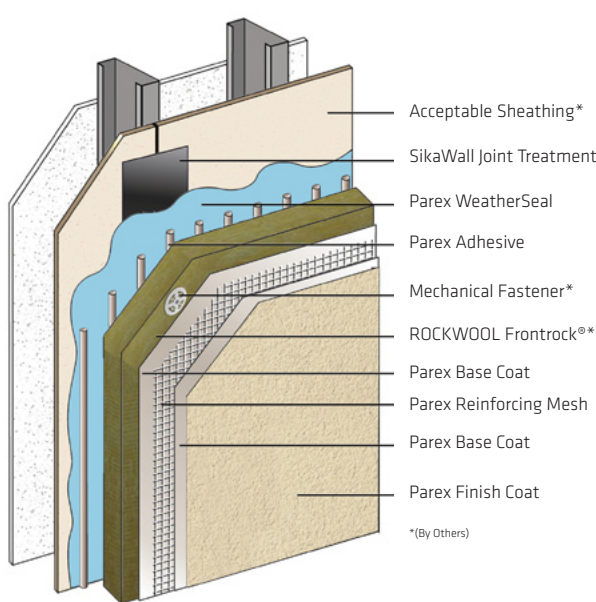
**WATERMASTER FB** is a drainage EIFS systems that incorporates fireblocking strips of ROCKWOOL Frontrock® insulation board within and around EPS insulation board in a single code compliant, water-drainage exterior cladding.

**WATERMASTER NC** is a continuously insulated, water-drainage wall cladding. The system utilizes ROCKWOOL Frontrock® insulation and Parex WeatherSeal fluid-applied air/water-resistive barrier that provides continuous air and moisture protection.

WaterMaster FB



WaterMaster NC



\*WeatherSeal can be used behind all claddings where more than one wall system is specified, creating one continuous AWRB system. This is appropriate whenever Parex WaterMaster NC is used with other cladding types on a multi-clad building.

## CODE COMPLIANCE (WATERMASTER NC & FB)

Document	Code Description
ICC-ESR 2562	Complies with IBC and IRC
ASTM E2568 / AC 235	Complies with requirements
ASTM E119	Does not detract from fire rating of base wall
ICC-ESR 2045 (WeatherSeal)	Air/water-resistive barrier*
NFPA 285/268	Meets requirements for use on fire-resistance-rated construction type, including IBC Types I through VC
ASTM E136	Insulation defined as non-combustible
ASTM C612	ROCKWOOL insulation is compliant for mineral fiber block and board thermal insulation

For testing results, please reference WaterMaster NC and FB specifications



# PAREX WATERMASTER NC AND FB ADVANTAGES

**PAREX WATERMASTER NC AND FB** wall systems incorporate ROCKWOOL Frontrock® continuous insulation, Parex air/water-resistive barrier and drainage for optimum heat, air and moisture control with virtually unlimited aesthetic versatility, all covered under a single-source manufacturer warranty.

By featuring **ROCKWOOL FRONTROCK®** insulation –engineered for EIFS applications – the system delivers superior fire performance, and contributes toward improved energy efficiency, thermal comfort, moisture control, and acoustic performance.



## FIRE RESISTANCE

Noncombustible, Class A per ASTM E84, stone wool EIFS permits use in non-loadbearing fire-resistance-rated construction and IBC Type I through V, without height or setback limitations



## THERMAL PERFORMANCE

ROCKWOOL Frontrock® provides a stable R4 per inch and maintains its thermal performance over the lifetime of the building, with system designs up to R16 continuous insulation



## MOISTURE MANAGEMENT

Water repellent and vapor open, contributes toward EIFS that allow for a high degree of drying potential and meets industry standard for drainage efficiency (ASTM E2273)



## ACOUSTICS

Improved acoustic dampening for a quieter environment, particularly for new and retrofit construction in urban environments, tested in accordance with ASTM E1332



## DURABILITY

Provides a stable substrate without causing undesirable stress on the EIFS lamina and impact resistance that meets or exceeds industry standards (ASTM E2486)

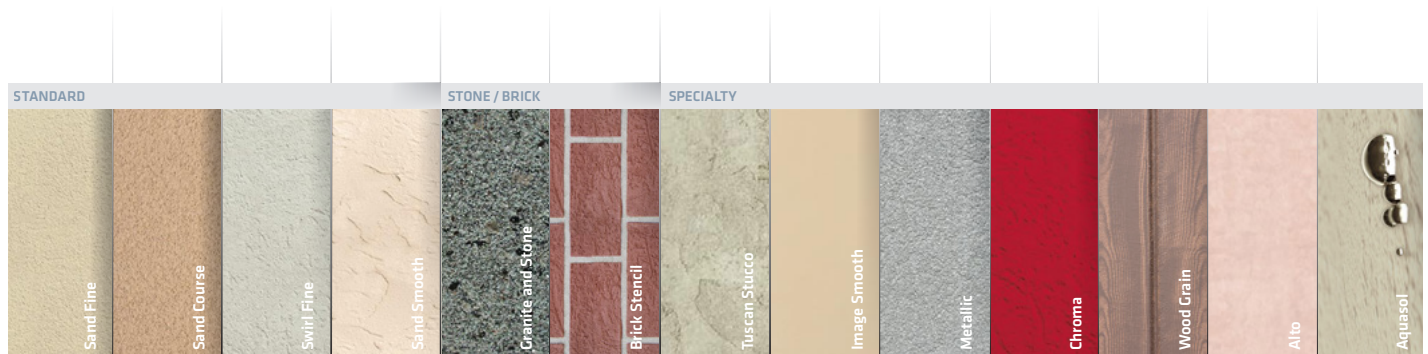


## BY NATURE

Manufactured from one of the world's most abundant raw materials without the use of blowing agents or toxic flame retardants, EIFS with stone wool contributes toward LEED credits for your project

## DESIGN FLEXIBILITY

- ✓ Access to Parex's portfolio of standard and specialty finishes
- ✓ Parex WaterMaster NC and FB offer a non-combustible alternative to foam plastic insulation-based systems





Our most current General Sales Conditions shall apply.  
Please consult the Data Sheet prior to any use and processing

© 2025 Sika Corporation, 14001014 rev 06/2025

**Sika Corporation**

201 Polito Avenue  
Lyndhurst, NJ 07071 USA  
Customer Service (800) 433-9517  
Technical Service (800) 243-6739  
[usa.sika.com/parex](http://usa.sika.com/parex)

**BUILDING TRUST**

