

LaHabra®



Finescreen 1000 with MaxGrip Veneer Adhesive

Cement Board System with Adhered Veneer

Typical 2D Details

BUILDING TRUST



Finescreen 1000 with MaxGrip Veneer Adhesive

Typical 2D Details

Table of Contents

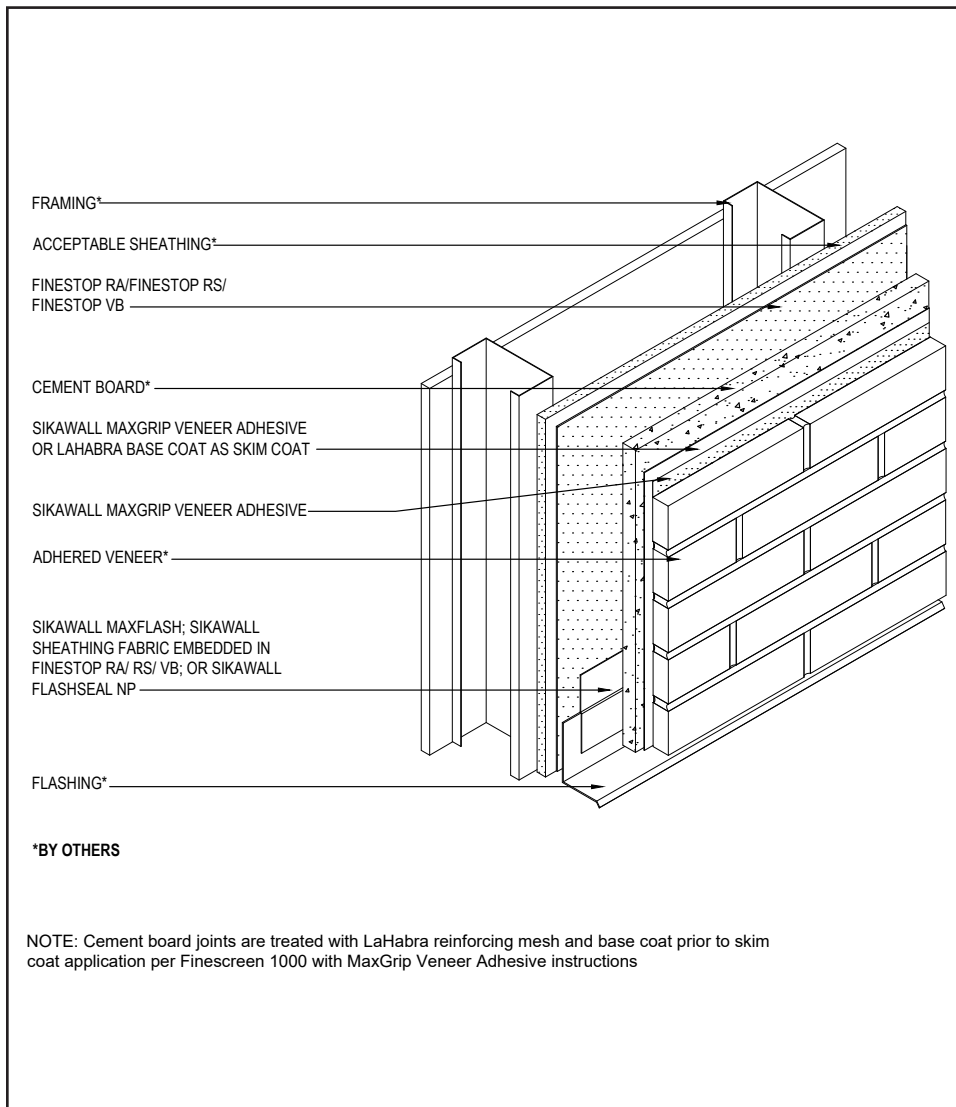
1. Typical Finescreen 1000 with MaxGrip Veneer Adhesive System (Isometric)
2. Typical Termination at Foundation
3. Typical EIFS Abutment
4. Typical Outside Corner
5. Typical Inside Corner
6. Typical Window Jamb (Flush)
7. Typical Window Head (Flush)
8. Typical Window Sill (Flush)
9. Typical Roof Edge Flashing
10. Typical Column Base
11. Typical Light Fixture
12. Typical Pipe Penetration
13. Typical Termination at Dissimilar Material

Notes:

- **The details within are the latest recommendations and are represent in good faith by Sika Corporation US (hereinafter Sika). The details are subject to change without notice. Sika accepts no liability for the end use of the details. For conditions not shown, consult Sika for review of specific details.**
- **Install Sika materials in accordance with current installation instructions.**
- **Unsatisfactory conditions shall be reported to the General Contractor and corrected before the application of Sika products.**

Finescreen 1000 with MaxGrip Veneer Adhesive

TYPICAL FINESCREEN 1000 WITH MAXGRIP VENEER ADHESIVE SYSTEM (ISOMETRIC)



- Adhered veneer shall not exceed 15 lbs. (6.8 kg) per sq. ft.

01 0724

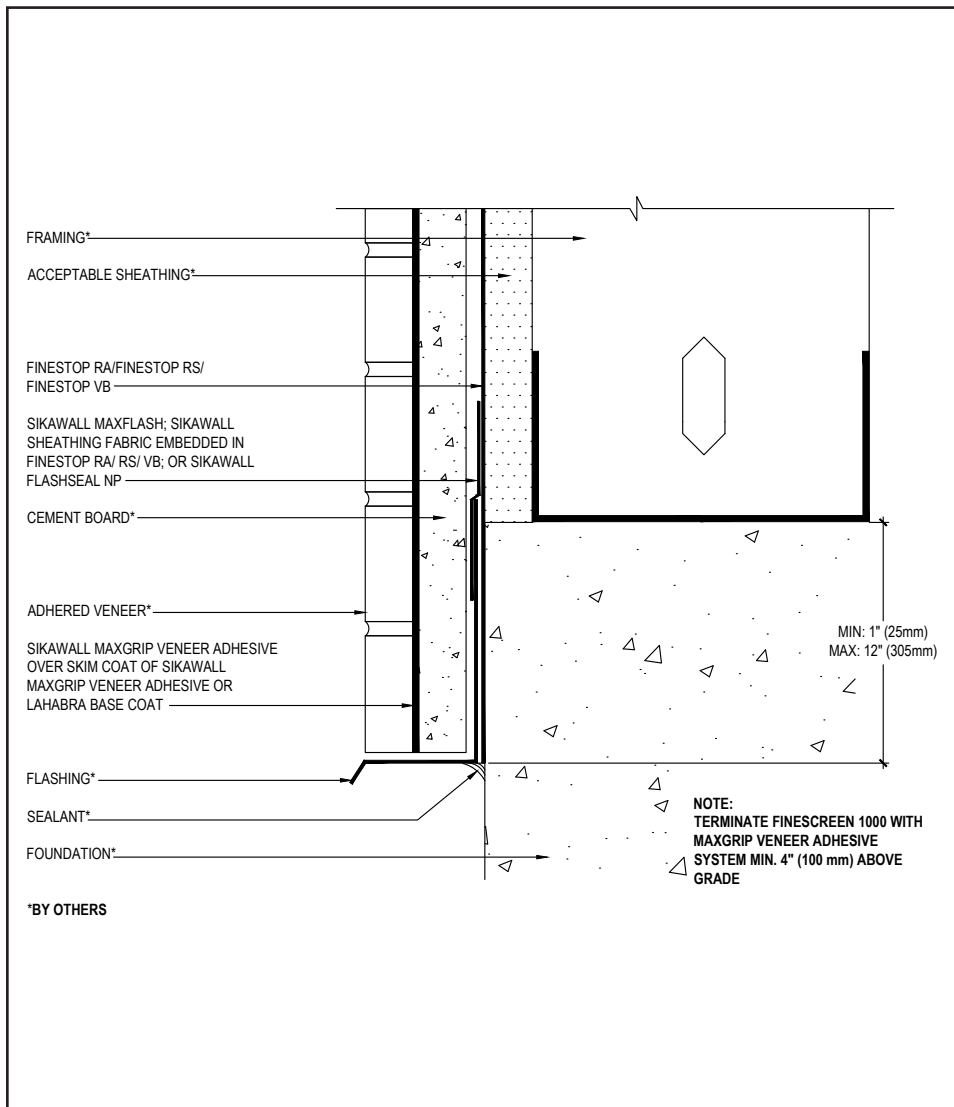
(*NOTE: BY OTHERS)

The details within are the latest recommendations and are represented in good faith by Sika Corporation US (hereinafter Sika). The details are subject to change without notice. Sika accepts no liability for the end use of the details. For conditions not shown, consult Sika for review of specific details.

- Install Sika materials in accordance with current installation instructions.
- Unsatisfactory conditions shall be reported to the General Contractor and corrected before the application of Sika products.

Finescreen 1000 with MaxGrip Veneer Adhesive

TYPICAL TERMINATION AT FOUNDATION



- Terminate the Finescreen 1000 with MaxGrip system a minimum of 4" (152 mm) above raw earth and 2" (50 mm) above paved surface.
- Provide a minimum 2" (50 mm) overlap at framing/foundation transition.

02 0724

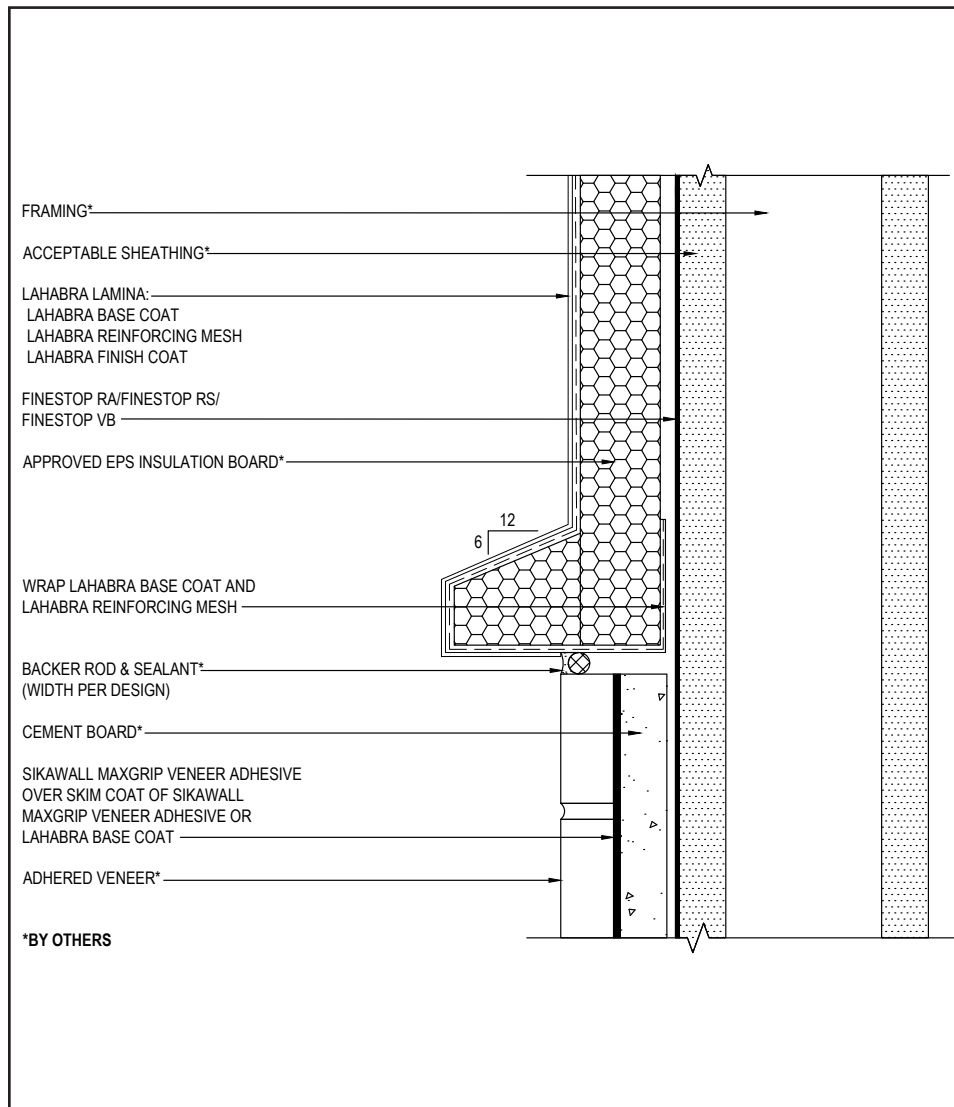
(*NOTE: BY OTHERS)

The details within are the latest recommendations and are represented in good faith by Sika Corporation US (hereinafter Sika). The details are subject to change without notice. Sika accepts no liability for the end use of the details. For conditions not shown, consult Sika for review of specific details.

- Install Sika materials in accordance with current installation instructions.
- Unsatisfactory conditions shall be reported to the General Contractor and corrected before the application of Sika products.

Finescreen 1000 with MaxGrip Veneer Adhesive

TYPICAL EIFS ABUTMENT



- Ensure EIFS termination is fully encapsulated with mesh reinforced base coat. Pre-backwrap both the vertical and horizontal terminations. Extend reinforcing mesh a minimum of 2 1/2" onto back of insulation board.

03 0724

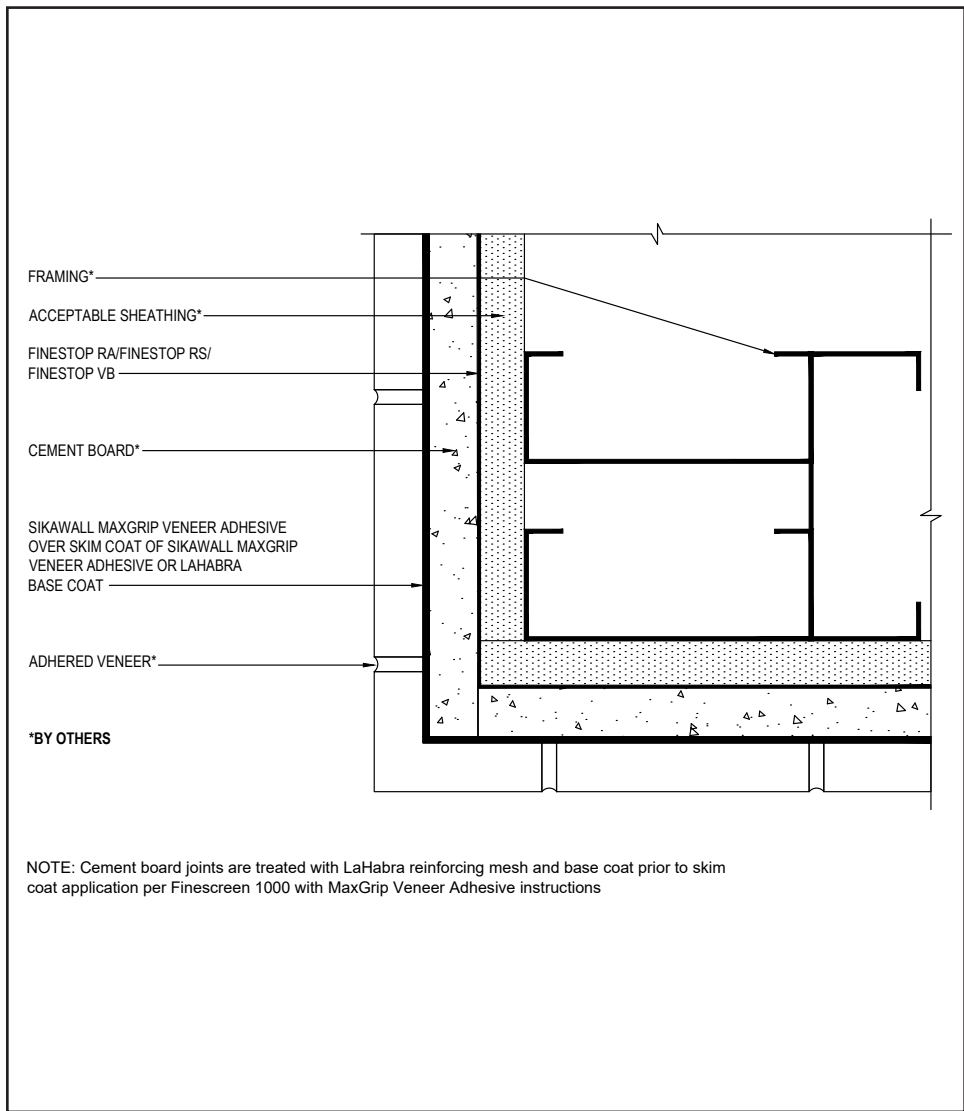
(*NOTE: BY OTHERS)

The details within are the latest recommendations and are represented in good faith by Sika Corporation US (hereinafter Sika). The details are subject to change without notice. Sika accepts no liability for the end use of the details. For conditions not shown, consult Sika for review of specific details.

- Install Sika materials in accordance with current installation instructions.
- Unsatisfactory conditions shall be reported to the General Contractor and corrected before the application of Sika products.

Finescreen 1000 with MaxGrip Veneer Adhesive

TYPICAL OUTSIDE CORNER



- Cement board sheathing joints must be treated with LaHabra reinforcing mesh and base coat prior to skim coat application of SikaWall MaxGrip Veneer Adhesive.

04 0724

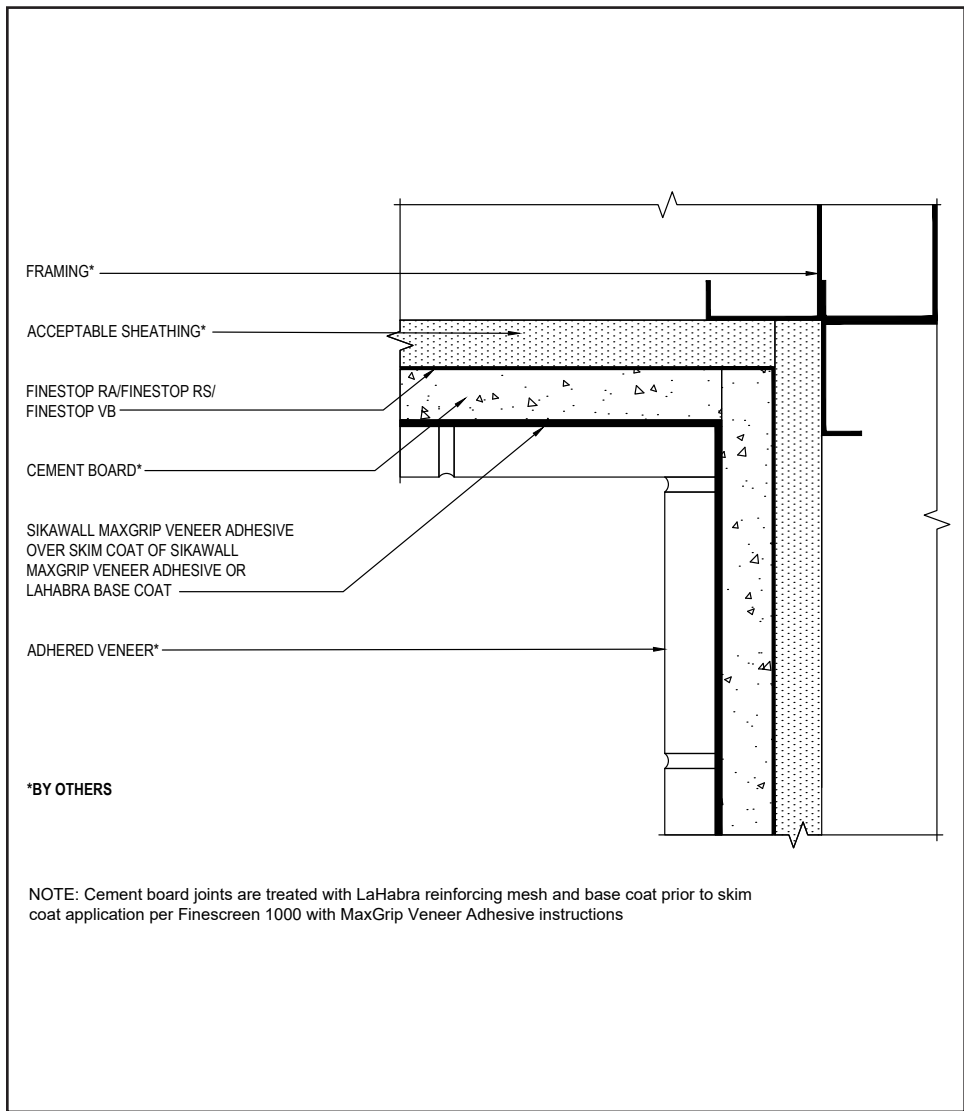
(*NOTE: BY OTHERS)

The details within are the latest recommendations and are represented in good faith by Sika Corporation US (hereinafter Sika). The details are subject to change without notice. Sika accepts no liability for the end use of the details. For conditions not shown, consult Sika for review of specific details.

- Install Sika materials in accordance with current installation instructions.
- Unsatisfactory conditions shall be reported to the General Contractor and corrected before the application of Sika products.

Finescreen 1000 with MaxGrip Veneer Adhesive

TYPICAL INSIDE CORNER



- Cement board sheathing joints must be treated with LaHabra reinforcing mesh and base coat prior to skim coat application of SikaWall MaxGrip Veneer Adhesive.

05 0724

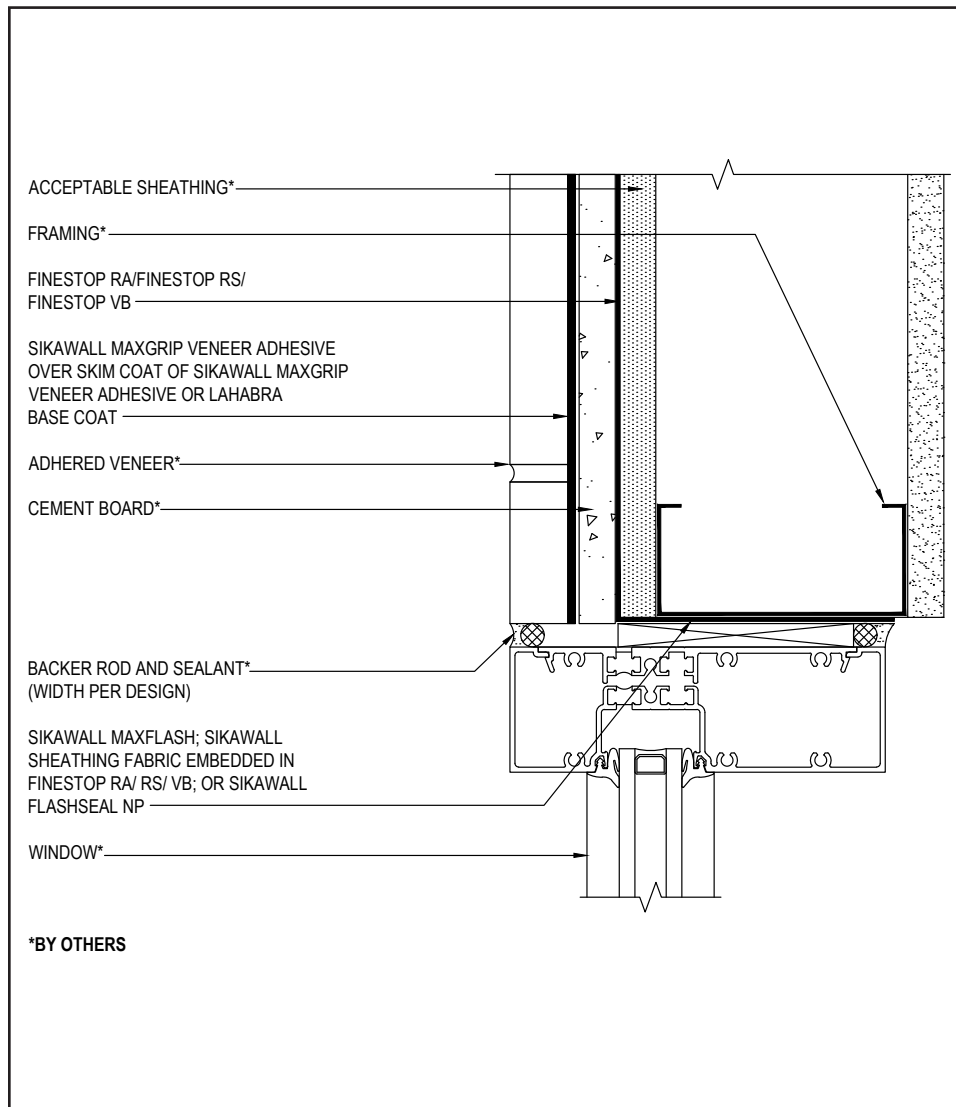
(*NOTE: BY OTHERS)

The details within are the latest recommendations and are represented in good faith by Sika Corporation US (hereinafter Sika). The details are subject to change without notice. Sika accepts no liability for the end use of the details. For conditions not shown, consult Sika for review of specific details.

- Install Sika materials in accordance with current installation instructions.
- Unsatisfactory conditions shall be reported to the General Contractor and corrected before the application of Sika products.

Finescreen 1000 with MaxGrip Veneer Adhesive

TYPICAL WINDOW JAMB (FLUSH)



06 0724

(*NOTE: BY OTHERS)

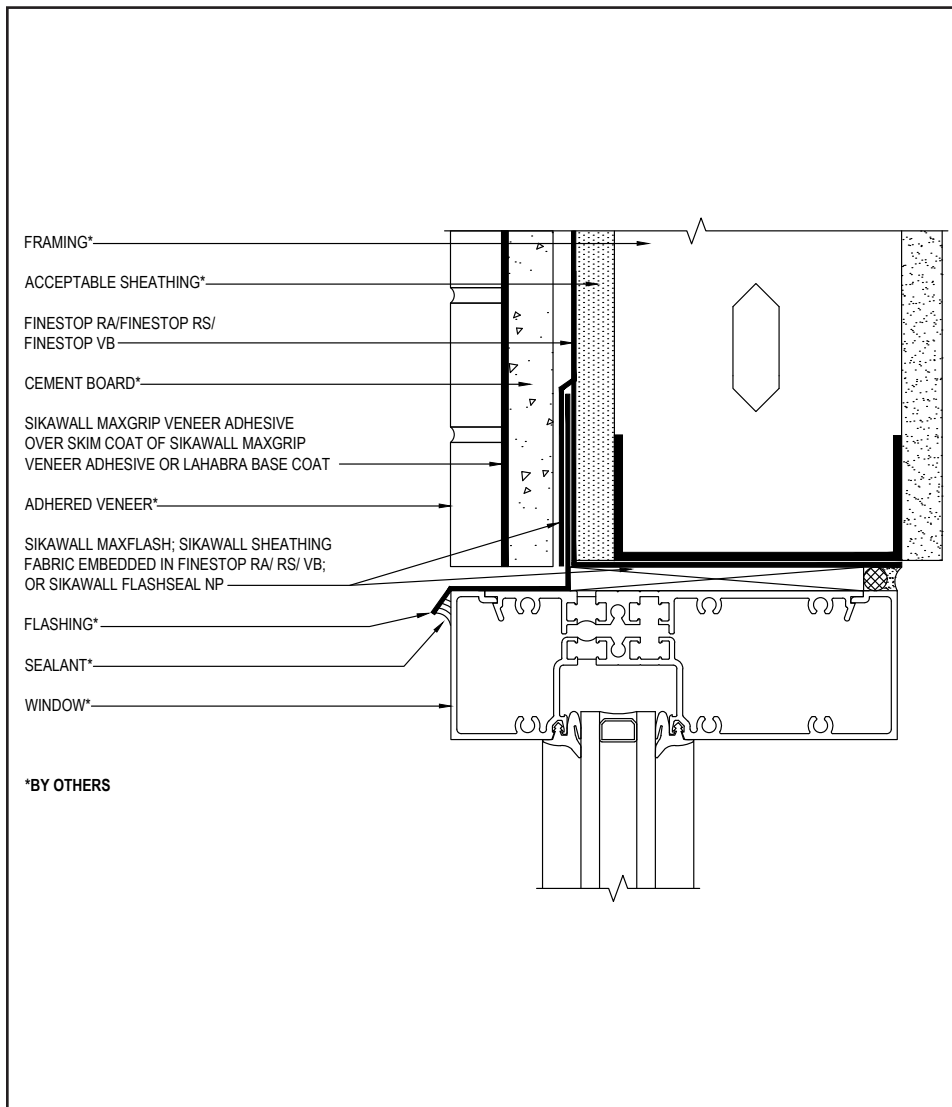
- Prior to window and SikaWall Drainage Mat installation, ensure water-resistive barrier is properly applied into the rough openings in accordance with LaHabra application guidelines and code requirements. Reference LaHabra Finestop published typical details for further information.
- Reference *Acceptable Sealants for use with LaHabra Wall Systems* Technical Bulletin for a list of sealants.
- Consult window and sealant manufacturers to verify window installation, detailing and to ensure no water leakage into the wall assembly.

The details within are the latest recommendations and are represented in good faith by Sika Corporation US (hereinafter Sika). The details are subject to change without notice. Sika accepts no liability for the end use of the details. For conditions not shown, consult Sika for review of specific details.

- Install Sika materials in accordance with current installation instructions.
- Unsatisfactory conditions shall be reported to the General Contractor and corrected before the application of Sika products.

Finescreen 1000 with MaxGrip Veneer Adhesive

TYPICAL WINDOW HEAD (FLUSH)



- Prior to window and SikaWall Drainage Mat installation, ensure water-resistive barrier is properly applied into the rough openings in accordance with LaHabra application guidelines and code requirements. Reference LaHabra Finestop published typical details for further information.
- Ensure a means for drainage is provided at system termination at window head.
- Provide end-dams at flashing terminations.
- Consult window and sealant manufacturers to verify window installation, detailing and to ensure no water leakage into the wall assembly.

07 0724

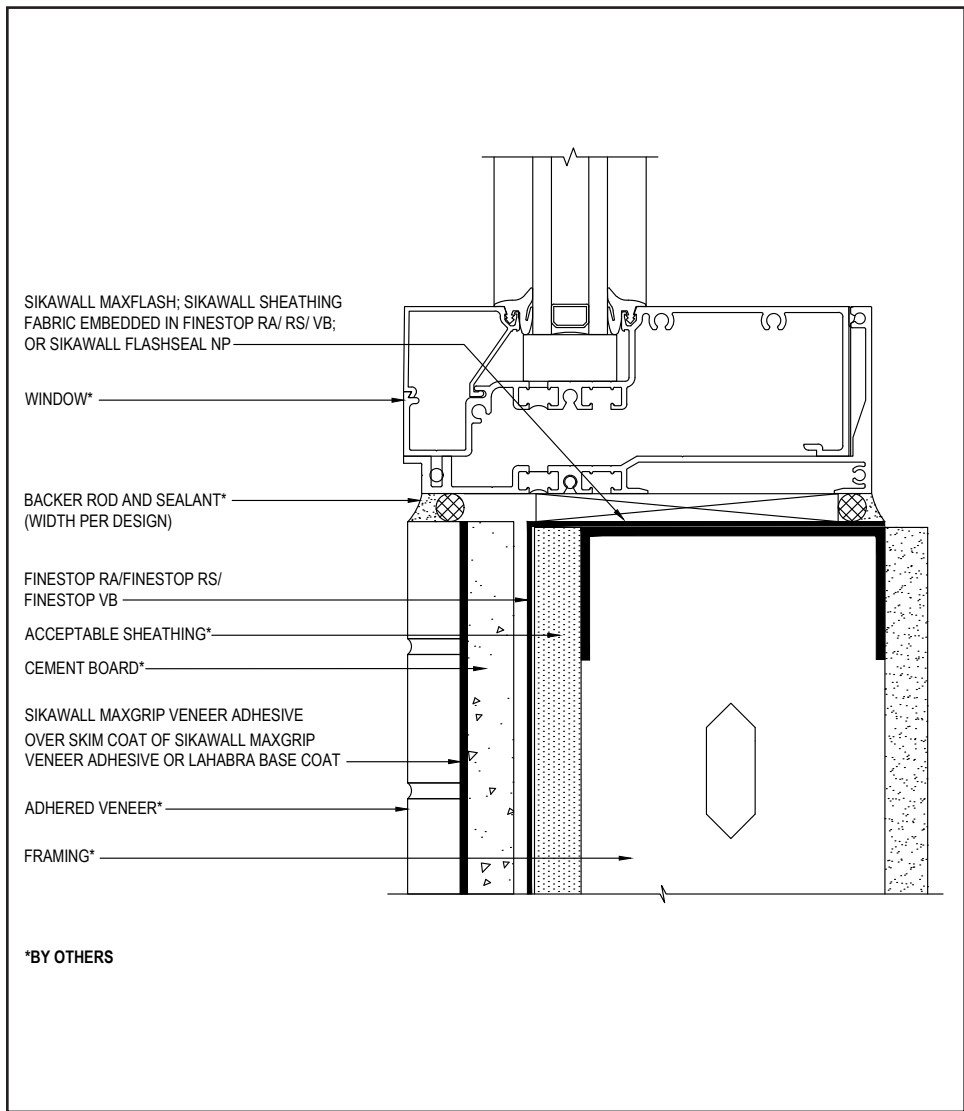
(*NOTE: BY OTHERS)

The details within are the latest recommendations and are represented in good faith by Sika Corporation US (hereinafter Sika). The details are subject to change without notice. Sika accepts no liability for the end use of the details. For conditions not shown, consult Sika for review of specific details.

- Install Sika materials in accordance with current installation instructions.
- Unsatisfactory conditions shall be reported to the General Contractor and corrected before the application of Sika products.

Finescreen 1000 with MaxGrip Veneer Adhesive

TYPICAL WINDOW SILL (FLUSH)



- Prior to window and SikaWall Drainage Mat installation, ensure water-resistive barrier is properly applied into the rough openings in accordance with LaHabra application guidelines and code requirements. Reference LaHabra Finestop published typical details for further information.
- Consult window and sealant manufacturers to verify window installation, detailing and to ensure no water leakage into the wall assembly.

*BY OTHERS

08 0724

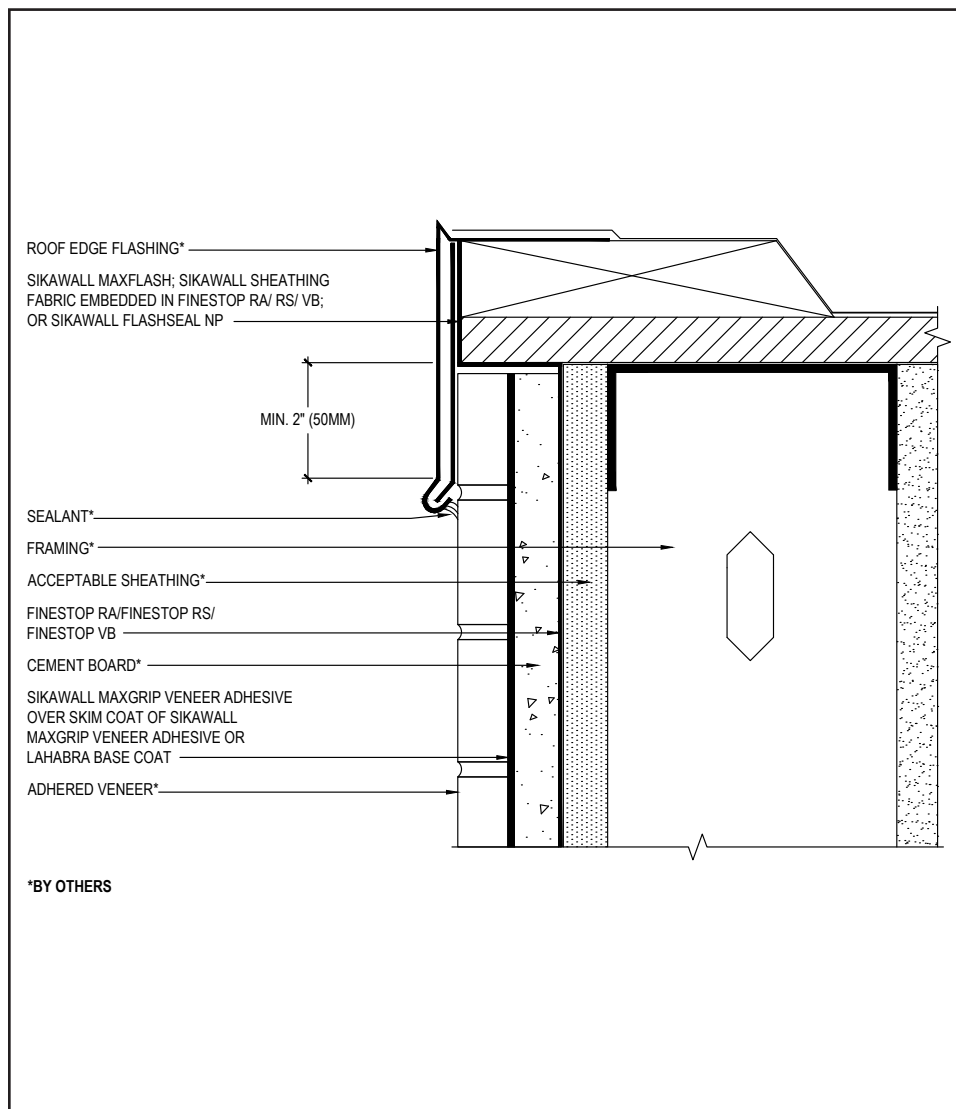
(*NOTE: BY OTHERS)

The details within are the latest recommendations and are represented in good faith by Sika Corporation US (hereinafter Sika). The details are subject to change without notice. Sika accepts no liability for the end use of the details. For conditions not shown, consult Sika for review of specific details.

- Install Sika materials in accordance with current installation instructions.
- Unsatisfactory conditions shall be reported to the General Contractor and corrected before the application of Sika products.

Finescreen 1000 with MaxGrip Veneer Adhesive

TYPICAL ROOF EDGE FLASHING



- Ensure that metal coping/flashing extends onto the system a minimum of 2" (50 mm) down the face.
- Extend Finestop RA/RS/VB or SikaWall MaxFlash onto bottom of blocking or provide alternate air seal at sheathing termination to blocking.

09 0724

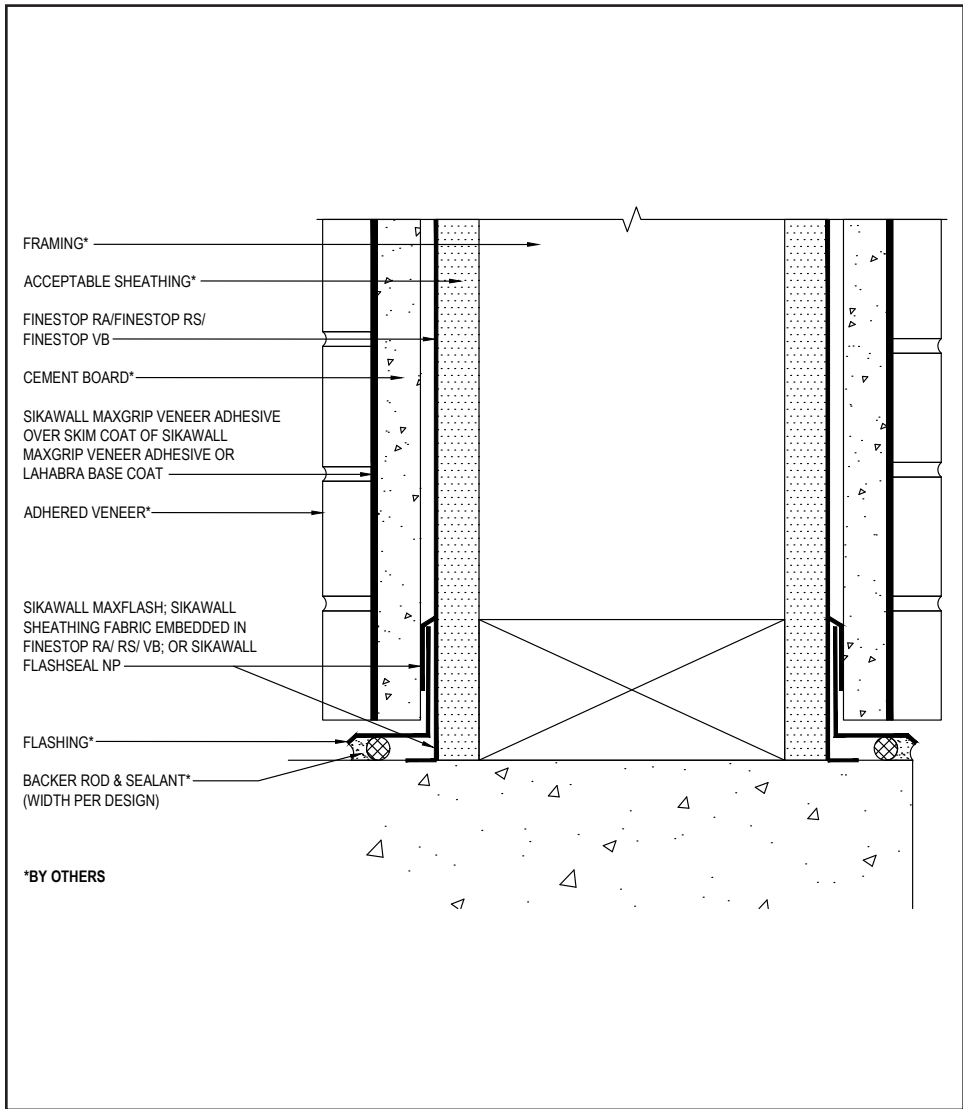
(*NOTE: BY OTHERS)

The details within are the latest recommendations and are represented in good faith by Sika Corporation US (hereinafter Sika). The details are subject to change without notice. Sika accepts no liability for the end use of the details. For conditions not shown, consult Sika for review of specific details.

- Install Sika materials in accordance with current installation instructions.
- Unsatisfactory conditions shall be reported to the General Contractor and corrected before the application of Sika products.

Finescreen 1000 with MaxGrip Veneer Adhesive

TYPICAL COLUMN BASE



- Terminate the Finescreen 1000 CI with MaxGrip system a minimum of 4" (101 mm) above raw earth and 1" (25 mm) above paved surface.

10 0724

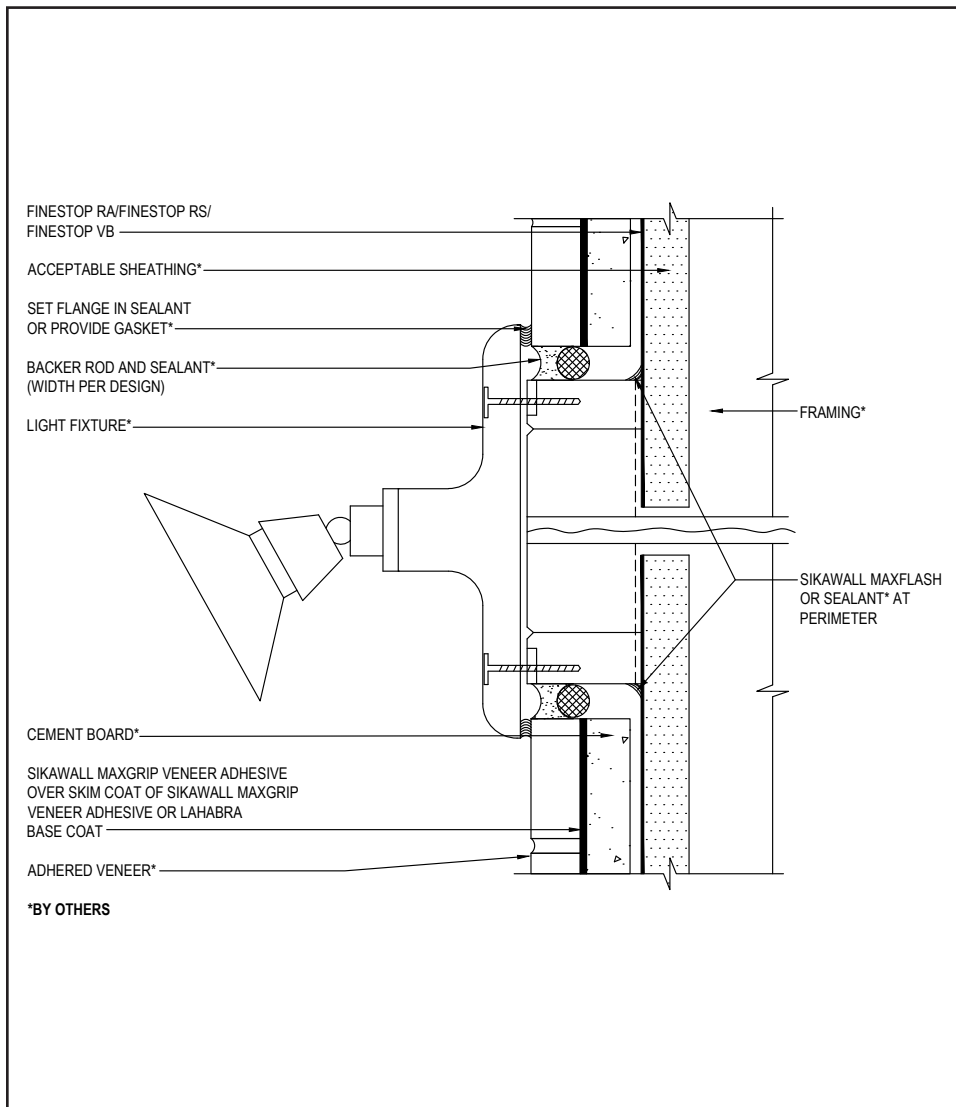
(*NOTE: BY OTHERS)

The details within are the latest recommendations and are represented in good faith by Sika Corporation US (hereinafter Sika). The details are subject to change without notice. Sika accepts no liability for the end use of the details. For conditions not shown, consult Sika for review of specific details.

- Install Sika materials in accordance with current installation instructions.
- Unsatisfactory conditions shall be reported to the General Contractor and corrected before the application of Sika products.

Finescreen 1000 with MaxGrip Veneer Adhesive

TYPICAL LIGHT FIXTURE



- Ensure all penetrations into the system are properly sealed.
- Provide continuous air seal around perimeter of penetration prior to SikaWall Drainage Mat application. Reference *Acceptable Sealants for use with Finestop RA/RS/VB* Technical Bulletin for a list of sealants.

11 0724

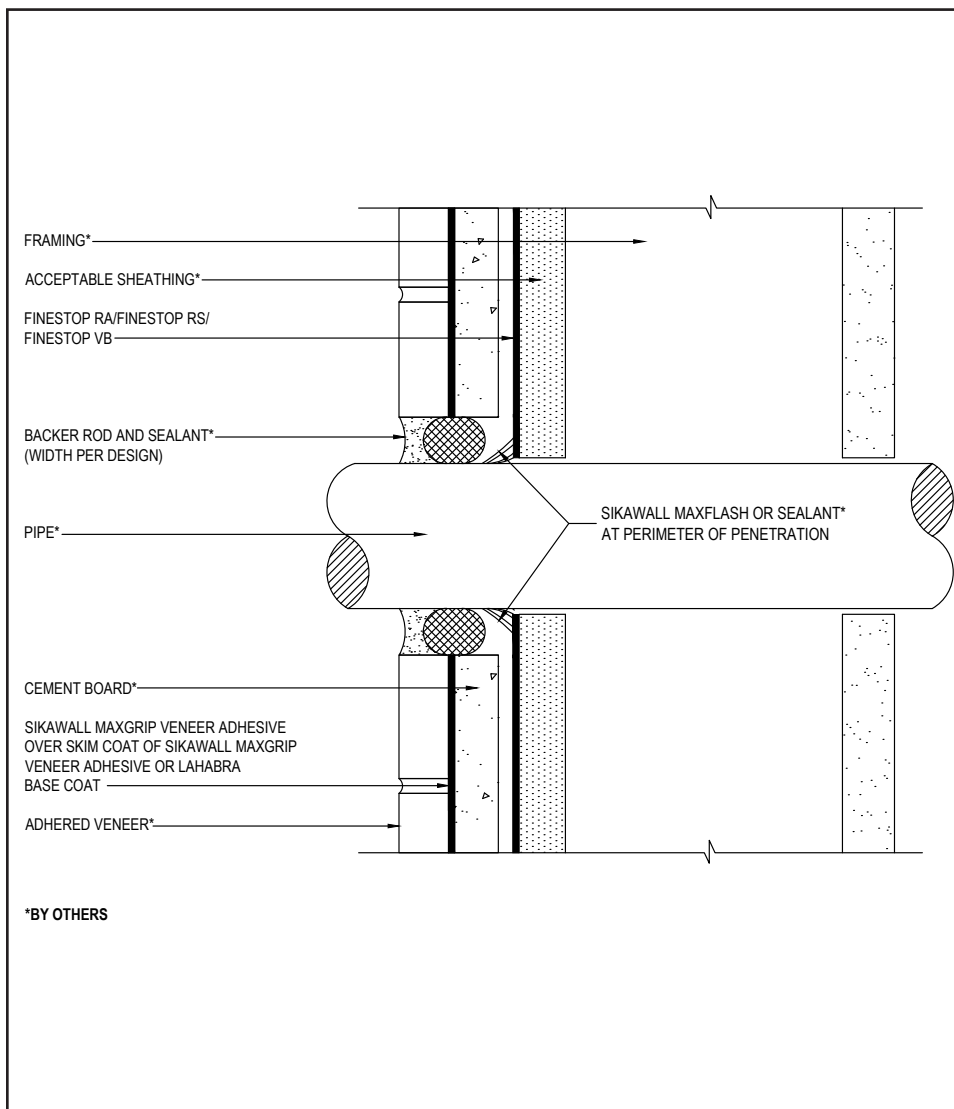
(*NOTE: BY OTHERS)

The details within are the latest recommendations and are represented in good faith by Sika Corporation US (hereinafter Sika). The details are subject to change without notice. Sika accepts no liability for the end use of the details. For conditions not shown, consult Sika for review of specific details.

- Install Sika materials in accordance with current installation instructions.
- Unsatisfactory conditions shall be reported to the General Contractor and corrected before the application of Sika products.

Finescreen 1000 with MaxGrip Veneer Adhesive

TYPICAL PIPE PENETRATION



- Ensure all penetrations into the system are properly sealed.
- Provide continuous air seal around perimeter of penetration prior to SikaWall Drainage Mat application.

12 0724

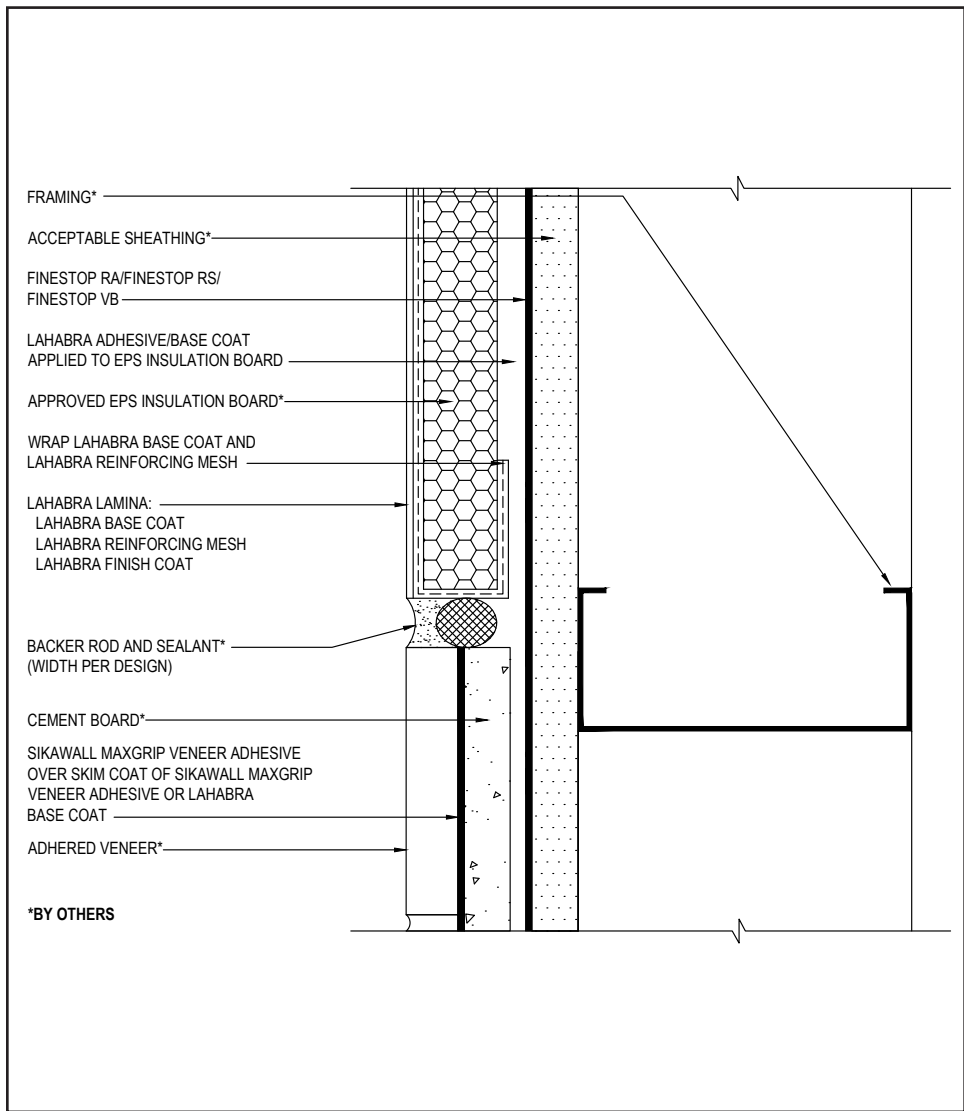
(*NOTE: BY OTHERS)

The details within are the latest recommendations and are represented in good faith by Sika Corporation US (hereinafter Sika). The details are subject to change without notice. Sika accepts no liability for the end use of the details. For conditions not shown, consult Sika for review of specific details.

- Install Sika materials in accordance with current installation instructions.
- Unsatisfactory conditions shall be reported to the General Contractor and corrected before the application of Sika products.

Finescreen 1000 with MaxGrip Veneer Adhesive

TYPICAL TERMINATION AT DISSIMILAR MATERIAL



• Reference *Acceptable Sealants for use with LaHabra Wall Systems* Technical Bulletin for a list of sealants.

13 0724

(*NOTE: BY OTHERS)

The details within are the latest recommendations and are represented in good faith by Sika Corporation US (hereinafter Sika). The details are subject to change without notice. Sika accepts no liability for the end use of the details. For conditions not shown, consult Sika for review of specific details.

- Install Sika materials in accordance with current installation instructions.
- Unsatisfactory conditions shall be reported to the General Contractor and corrected before the application of Sika products.

LIMITED WARRANTY NOTICE

Prior to each use of any product of Sika Corporation, its subsidiaries or affiliates ("SIKA"), the user must always read and follow the warnings and instructions on the product's most current product label, Product Data Sheet and Safety Data Sheet which are available at usa.sika.com/lahabra or by calling our Technical Service Department at +1 (800) 589-1336.

Nothing contained in any SIKA literature or materials relieves the user of the obligation to read and follow the warnings and instructions for each SIKA product as set forth in the current product label, Product Data Sheet and Safety Data Sheet prior to use of the SIKA product.

SIKA warrants this product for one year from date of installation to be free from manufacturing defects and to meet the technical properties on the current Product Data Sheet if used as directed within the product's shelf life. User determines suitability of product for intended use and assumes all risks. User's and/or buyer's sole remedy shall be limited to the purchase price or replacement of this product exclusive of any labor costs. NO OTHER WARRANTIES EXPRESS OR IMPLIED SHALL APPLY INCLUDING ANY WARRANTY OF MERCHANTABILITY OR FITNESS FOR A PARTICULAR PURPOSE. SIKA SHALL NOT BE LIABLE UNDER ANY LEGAL THEORY FOR SPECIAL OR CONSEQUENTIAL DAMAGES. SIKA SHALL NOT BE RESPONSIBLE FOR THE USE OF THIS PRODUCT IN A MANNER TO INFRINGE ON ANY PATENT OR ANY OTHER INTELLECTUAL PROPERTY RIGHTS HELD BY OTHERS. Sale of SIKA products are subject to the Terms and Conditions of Sale which are available at usa.sika.com.

For the most current version of this literature, please visit our website at usa.sika.com/lahabra.

Sika Corporation

201 Polito Avenue
Lyndhurst, NJ 07071 USA
Customer Service +1 (800) 433-9517
Technical Service +1 (800) 589-1336
usa.sika.com/lahabra

Rev July 2024

BUILDING TRUST

