

Senerflex Classic PB Wall System

Class PB Exterior Insulation and Finish System providing a primary moisture barrier and optional secondary air/weather barrier

DESCRIPTION

Senerflex Classic PB is an Exterior Insulation and Finish System (EIFS) that provides a durable weather-resistant primary barrier. The system offers design flexibility, aesthetic appeal and energy savings. Integrated system components include adhesive, EPS insulation board, reinforced system components include adhesive, EPS insulation board, reinforced base coat and 100% acrylic polymer finish. Senerflex Classic PB complies with ASTM E 2568 and has passed rigorous tests including Full-Scale Fire, Wind-Load, Wind-Driven Rain, and Large and Small Missiles.

ACCEPTABLE SUBSTRATES

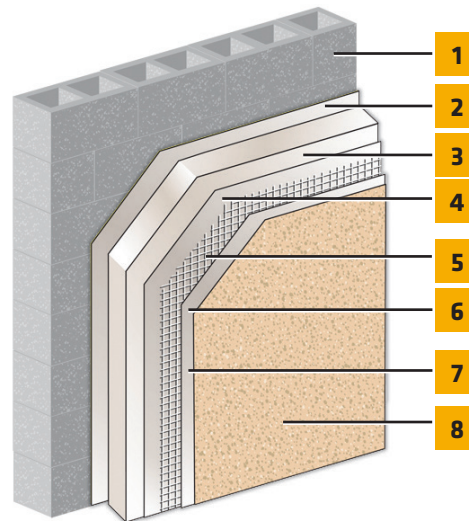
PermaBase® Cement Board and other cement boards conforming with ASTM C1325 (Type A - exterior); poured concrete/unit masonry; ASTM C1177 type sheathings, including Weather Defense™ Platinum sheathing, GreenGlass® sheathing, e2XP™ sheathing, GlasRoc® sheathing, Securock™ glass-mat sheathing, and DensGlass® exterior sheathing; gypsum sheathing (ASTM C79/C1396); Exposure I or exterior plywood (Grade C/D or better); or Exposure I OSB.

USES

For new or retrofit commercial and institutional construction such as hotels, hospitals, retail, schools, multi-family apartments and condominiums, and government facilities. Senerflex Classic PB can be panelized to expedite year-round construction. Use over mass walls where drainage is not required.

ADVANTAGES

- Cost-effective.
- Ability to achieve any architectural style with unlimited design options.
- Economical architectural detailing.
- Seamless exterior blanket of insulation provides high R values, lowers heating and cooling costs.
- Multiple options for impact resistance improve functional design, ease of maintenance.
- Plaster trims/accessories are not required for installation.
- Wide selection of standard colors, custom colors, and finish textures.



1. Concrete / Masonry*
2. Senergy Adhesive
3. Approved EPS Insulation Board*
4. Senergy Base Coat
5. Senergy Reinforcing Mesh
6. Senergy Base Coat
7. SikaWall® Tinted Primer (optional)
8. Senergy Finish Coat

DESIGN CONSIDERATIONS

- The design wind-load shall not exceed the system's allowable wind-load as stated in applicable code reports.
- System is not designed for horizontal applications.
- Use high impact mesh for ground floor applications in high traffic areas.
- Consult the framing and sheathing manufacturer for design and application considerations.
- Limit the use of dark colors. Heat build up behind dark colors can adversely affect the performance of EPS insulation. Use of colors with a light reflectance value of less than 20% require the approval of the Sika Facades Technical Department.
- Do not use below grade; system must terminate a minimum of 203 mm (8") inches above grade.
- Maximum substrate design deflection is L/240.

Senerflex Classic PB Wall System

WARRANTY

Prior to each use of any product of Sika Corporation, its subsidiaries or affiliates ("SIKA"), the user must always read and follow the warnings and instructions on the product's most current product label, Product Data Sheet and Safety Data Sheet which are available at usa.sika.com/senergy or by calling SIKAFACADES' Technical Service Department at 1-800-589-1336. Nothing contained in any SIKALITERATURE or materials relieves the user of the obligation to read and follow the warnings and instructions for each SIKAPRODUCT as set forth in the current product label, Product Data Sheet and Safety Data Sheet prior to use of the SIKAPRODUCT.

SIKA warrants this product for one year from date of installation to be free from manufacturing defects and to meet the technical properties on the current Product Data Sheet if used as directed within the product's shelf life. User determines suitability of product for intended use and assumes all risks. User's and/or buyer's sole remedy shall be limited to the purchase price or replacement of this product exclusive of any labor costs. NO OTHER WARRANTIES EXPRESS OR IMPLIED SHALL APPLY INCLUDING ANY WARRANTY OF MERCHANTABILITY OR FITNESS FOR A PARTICULAR PURPOSE. SIKASHALL NOT BE LIABLE UNDER ANY LEGAL THEORY FOR SPECIAL OR CONSEQUENTIAL DAMAGES. SIKASHALL NOT BE RESPONSIBLE FOR THE USE OF THIS PRODUCT IN A MANNER TO INFRINGE ON ANY PATENT OR ANY OTHER INTELLECTUAL PROPERTY RIGHTS HELD BY OTHERS. Sale of SIKAPRODUCTS are subject to the Terms and Conditions of Sale which are available at usa.sika.com.

Sika Corporation
201 Polito Avenue
Lyndhurst, NJ 07071 USA
Customer Service +1 (800) 433-9517
Technical Service +1 (800) 589-1336
usa.sika.com/senergy

Rev May 2024

BUILDING TRUST

