

SIKAGARD 535 VAPOR PERMEABLE AIR BARRIER

TERMINATION BAR IN BED OF SIKAFLEX 11 FC

SIKA TAPE 540 6" SELF-ADHERED TRANSITION SEAM TAPE

METAL THROUGH WALL FLASHING

SIKA MULTISEAL 500 SELF-ADHERED TAPE

PRIMER UNDER SIKAFLEX 11 FC SIKADUR 22 FS

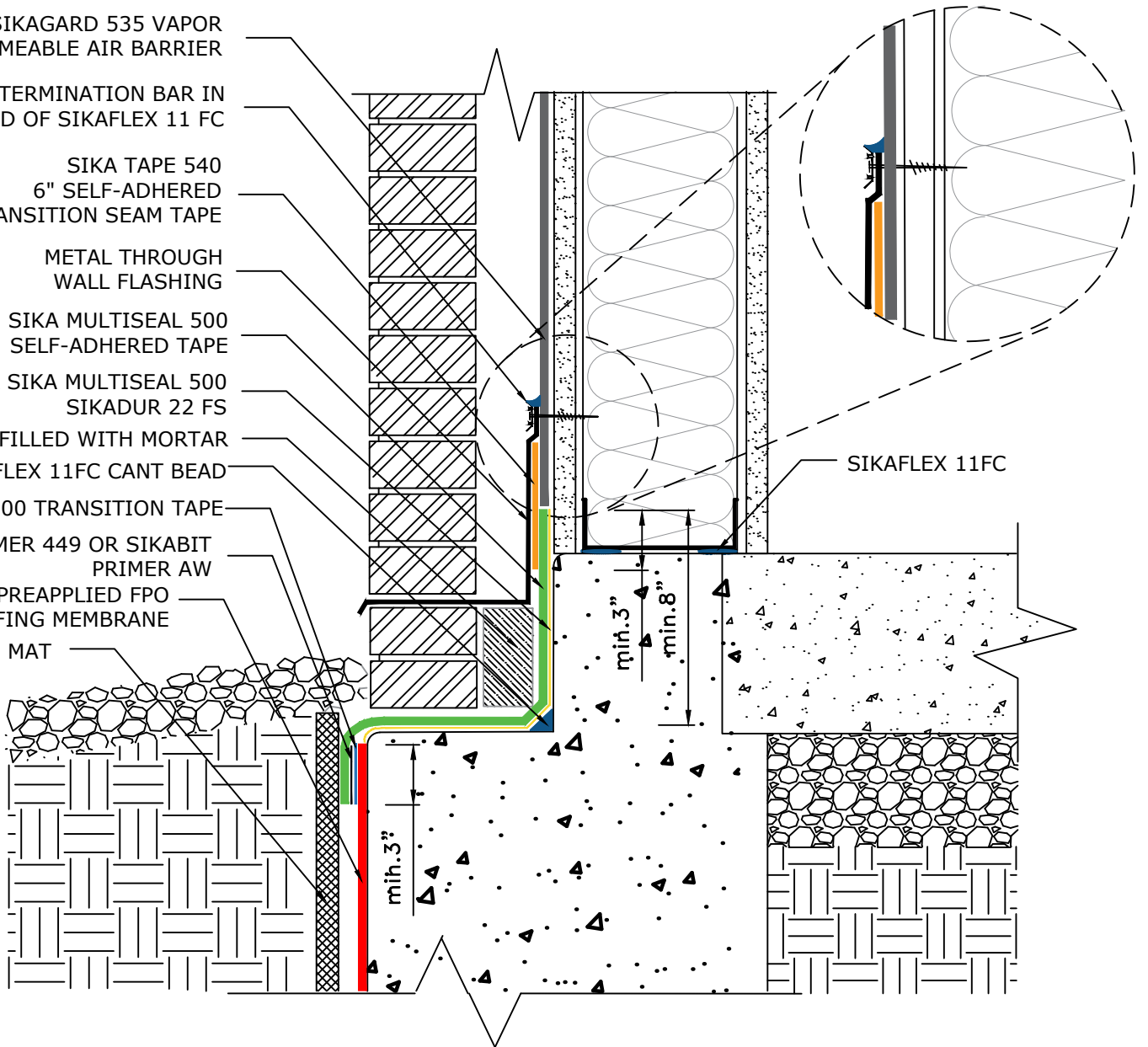
COLLAR JOINT FILLED WITH MORTAR SIKAFLEX 11FC CANT BEAD

SARNATAPE 200 TRANSITION TAPE

SIKA PRIMER 449 OR SIKABIT PRIMER AW

SIKAPROOF A+ PREAPPLIED FPO WATERPROOFING MEMBRANE

SIKA DRAINAGE MAT



Air Barrier Notes:

1. TREAT CONNECTIONS BETWEEN DISSIMILAR MATERIALS WITH SELF-ADHERED TRANSITION SEAM TAPE SIKATAPE 540.
2. PRODUCTS SHOULD BE INSTALLED IN THE ORDER SHOWN ON DETAIL.
3. PENETRATIONS OF THE AIR BARRIER SYSTEM SHALL BE SEALED WITH SIKAFLEX 11FC SEALANT TO MAINTAIN THE INTEGRITY OF THE AIR BARRIER SYSTEM OVER THE ENTIRE SURFACE
4. REFER TO SIKA TECHNICAL DATA SHEETS AND GUIDE SPECIFICATIONS FOR RECOMMENDED INSTALLATION PROCEDURES AND COMPATIBLE SEALANTS
5. AIR BARRIERS ARE NOT DESIGNED FOR STANDING WATER. PROPER PITCH AND DRAINAGE ARE REQUIRED AND THE METAL PANEL SYSTEM SHOULD BE WATER TIGHT
6. TREAT FASTENERS BY DIPPING THEM INTO SIKAGARD 535 OR APPLYING SIKAFLEX 11FC TO THE FASTENER PRIOR TO INSTALLATION
7. SIKAMEMBRAN 540 PLUS MAY BE USED IN LIEU OF SIKAMEMBRAN 540 ESPECIALLY WHEN THE SUBSTRATE IS CMU OR CONCRETE. TEST ON SITE TO VERIFY ADEQUATE ADHESION.
8. SIKADetail IS NOT INTENDED TO SHOW EXACT CONSTRUCTION DETAILING, BUT IS SIMPLY SHOWN HERE AS A REPRESENTATIVE TYPE DETAIL TO HIGHLIGHT THE AIR BARRIER AND TRANSITION MATERIALS.



SIKAPROOF A+ PRE-APPLIED BELOW GRADE WATERPROOFING TO SIKAGARD 535 AIR BARRIER TRANSITION

SCALE: N.T.S.

DATE: 3/31/2022

FILE NO.:

DRW. NO.: AB-15

AS A MANUFACTURER OF CONSTRUCTION PRODUCTS, SIKA CORPORATION PROVIDES GENERIC DETAILS AS A GENERAL GUIDE FOR INFORMATION PURPOSES ONLY. THESE DETAILS ARE NOT INTENDED TO REPLACE SOUND ENGINEERING AND ARCHITECTURAL PRACTICES AND SHOULD NOT BE RELIED UPON FOR THAT PURPOSE. SIKA CORPORATION ASSUMES NO LIABILITY WITH RESPECT TO THE DESIGN OF THE SYSTEM. THE ARCHITECT, CONSULTANT AND/OR ENGINEER OR DESIGN PROFESSIONAL FOR A PARTICULAR PROJECT BEARS THE SOLE RESPONSIBILITY FOR THE DESIGN OF THE SYSTEM, FOR THE PREPARATION AND APPROVAL OF THE PROJECT SPECIFICATIONS, DETAILS AND SHOP DRAWINGS, AND FOR DETERMINING THEIR SUITABILITY FOR A PARTICULAR PROJECT OR APPLICATION. WHILE SIKA PROVIDES GENERAL INSTRUCTIONS FOR THE INSTALLATION OF ITS MATERIALS, THE MEANS AND METHODS USED BY THE CONTRACTOR FOR MATERIAL STORAGE, SUBSTRATE EVALUATION, SURFACE PREPARATION, AND THE INSTALLATION OF BOTH SIKA AND NON-SIKA MATERIALS ARE THE RESPONSIBILITY OF THE CONTRACTOR. THE CONTRACTOR MUST ALWAYS READ AND FOLLOW THE WARNINGS AND INSTRUCTIONS ON SIKA PRODUCT LABELS, TECHNICAL DATA SHEETS, AND MATERIAL SAFETY DATA SHEETS AVAILABLE AT WWW.SIKAUSA.COM. SIKA CORPORATION MAKES NO WARRANTY OF ANY KIND, EITHER EXPRESS OR IMPLIED, AS TO THE CONTENT OF THIS GUIDE DETAIL. SIKA SHALL NOT BE RESPONSIBLE UNDER ANY LEGAL THEORY TO ANY THIRD PARTY FOR ANY DIRECT OR CONSEQUENTIAL DAMAGES OF ANY KIND ARISING FROM THE USE OF THIS GUIDE DETAIL. ALL PRODUCTS AND SERVICES PROVIDED BY SIKA CORPORATION ARE SUBJECT TO ITS TERMS AND CONDITIONS OF SALE AVAILABLE AT WWW.SIKAUSA.COM.