

SYSTEM DATA SHEET

PAREX® NuTech Stucco MVS CI

Cement Board Stucco with Continous Insulation and Masonry Veneer Adhesive

PRODUCT DESCRIPTION

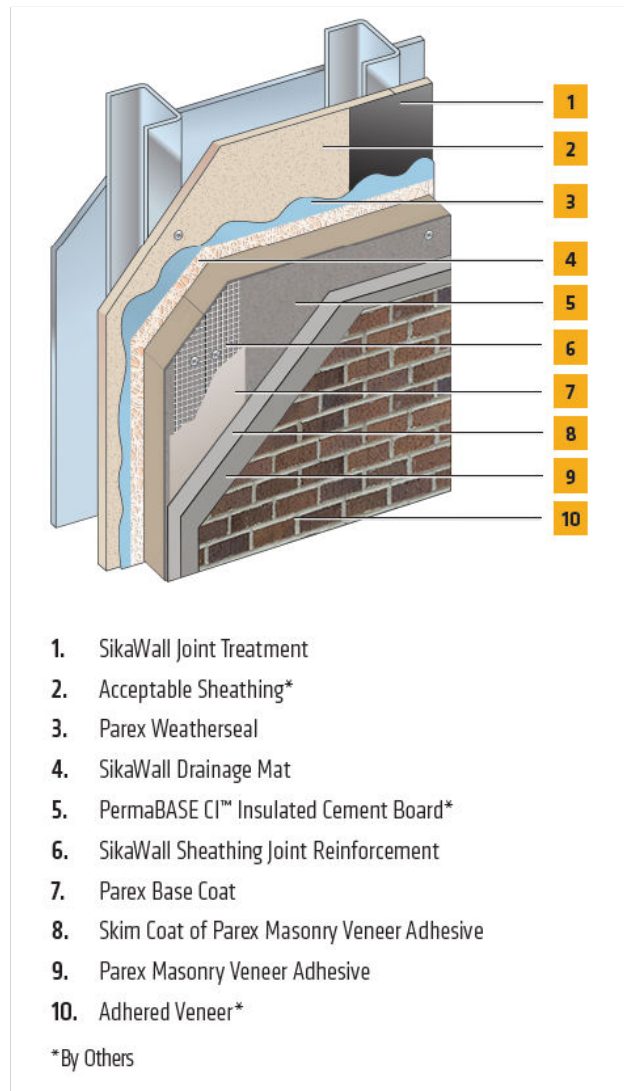
PAREX® NuTech Stucco MVS CI is a high-impact, water drainage wall cladding system that incorporates a Parex WeatherSeal air/water-resistive barrier, drainage mat and features PermaBASE CI™ Insulated Cement Board by PermaBASE® Building Products, LLC with a polymer-modified base coat, fiberglass reinforcing mesh, and Masonry Veneer Adhesive used to adhere natural and manufactured stone, tile, and thin brick veneer. PAREX® NuTech Stucco MVS CI system provides ease of design to ensure energy code compliance, high impact and increased dimensional stability without sacrificing design freedom.

USES

Vertical exterior walls in new or retrofit commercial, institutional and residential construction such as hotels, hospitals, retail, schools, multi-family apartments and condominiums, and government facilities.

CHARACTERISTICS / ADVANTAGES

- For use on non-combustible construction types
- For use with fire resistance rated walls
- Continuous insulation
- Built in drainage



SYSTEM INFORMATION

Compatibility

Material substitution will adversely affect system performance and will void all warranty coverage unless approved in writing by Sika Facades Technical Service Team.

System Performance	Test	METHOD	Criteria	RESULTS
	Transverse Wind-load	ASTM E330	Steel stud framing (20 gauge, 3 5/8") @ 16"o.c.	Average ultimate loads: +/- 35 psf (+/- 1723 Pa)
	Transverse Wind-load	ASTM E330	Wood assembly (2" x 4") @ 16"o.c.	Average ultimate loads: +/- 40.8 psf (+/- 1953 Pa)
	Radiant Heat Exposure	NFPA 268	No ignition at 20 minutes	Met test criteria.
	Intermediate Scale Multi-story Fire Test	NFPA 285 / UBC Standard 26-9	1. Resist flame propagation over the exterior surface 2. Resist vertical spread of flame within combustible core/ component of panel from one story to the next 3. Resist vertical spread of flame over the interior surface from one story to the next 4. Resist lateral spread of flame from the compartment of fire origin to adjacent spaces	Met test criteria
	Surface Burning	ASTM E84 / UL 723	Flame spread < 25 Smoke developed < 450	All components of the system meet Class A performance (FS < 25; SD < 450)

APPLICATION INFORMATION

Substrates

Acceptable Substrates:

Glass Mat Gypsum Sheathing
Gypsum Sheathing
Exposure 1 OSB
Cement Board Sheathing
Concrete & Concrete Masonry
Exposure 1 or Exterior Plywood

BASIS OF PRODUCT DATA

Results may differ based upon statistical variations depending upon mixing methods and equipment, temperature, application methods, test methods, actual site conditions and curing conditions.

LIMITATIONS

- Users must read the most current Product Data Sheets

for each system component before using any products and follow all application instructions and cautions

- Use only for above grade vertical walls
- Additives are not permitted for any product unless approved in writing by Sika Facades Technical Service.
- All products must be installed at minimum 40 °F (4 °C) ambient and substrate temperatures unless otherwise noted on specific Product Data Sheets.
- Protect all work from precipitation for at least 24-hours after application.

System Data Sheet
PAREX® NuTech Stucco MVS CI
June 2025, Version 01.01
021830950000242566

BUILDING TRUST



- All products must be stored in accordance with specific instructions on relevant Product Data Sheets.
- All substrates must be clean, dry and sound without planar irregularities greater than 1/4" per 10' (6 mm per 3 m).
- Maximum substrate design deflection is L/360.
- Expansion joints are required in the system where they exist in the substrate, where the system adjoins dissimilar construction, at changes in substrates, at floor lines in multilevel wood frame construction, and where movement is anticipated.
- Reference system specification for testing information.
- Contact Sika Facades' Technical Service Department at 1-800-226-2424 for additional information.

ENVIRONMENTAL, HEALTH AND SAFETY

For further information and advice regarding transportation, handling, storage and disposal of chemical products, user should refer to the actual Safety Data Sheets containing physical, environmental, toxicological and other safety related data. User must read the current actual Safety Data Sheets before using any products. In case of an emergency, call CHEMTREC at 1-800-424-9300, International 703-527-3887.

LEGAL DISCLAIMER

- KEEP CONTAINER TIGHTLY CLOSED
- KEEP OUT OF REACH OF CHILDREN
- NOT FOR INTERNAL CONSUMPTION
- FOR INDUSTRIAL USE ONLY
- FOR PROFESSIONAL USE ONLY

Prior to each use of any product of Sika Corporation, its subsidiaries or affiliates ("SIKA"), the user must always read and follow the warnings and instructions on the product's most current product label, Product Data Sheet and Safety Data Sheet which are available at usa.sika.com or by calling SIKA's Technical Service Department at 1-800-933-7452. Nothing contained in any SIKA literature or materials relieves the user of the obligation to read and follow the warnings and instructions for each SIKA product as set forth in the current product label, Product Data Sheet and Safety Data Sheet prior to use of the SIKA product.

SIKA warrants this product for one year from date of installation to be free from manufacturing defects and to meet the technical properties on the current Product Data Sheet if used as directed within the product's shelf life. User determines suitability of product for intended use and assumes all risks. User's and/or buyer's sole remedy shall be limited to the purchase price or replacement of this product exclusive of any labor costs. **NO OTHER WARRANTIES EXPRESS OR IMPLIED SHALL APPLY INCLUDING ANY WARRANTY OF MERCHANTABILITY OR FITNESS FOR A PARTICULAR PURPOSE. SIKA SHALL NOT BE LIABLE UNDER ANY LEGAL THEORY FOR SPECIAL OR CONSEQUENTIAL DAMAGES.**

Sika Corporation
201 Polito Avenue
Lyndhurst, NJ 07071
Phone: 1-800-933-7452
Fax: 1-201-933-0225



System Data Sheet
PAREX® NuTech Stucco MVS CI
June 2025, Version 01.01
021830950000242566

SIKA SHALL NOT BE RESPONSIBLE FOR THE USE OF THIS PRODUCT IN A MANNER TO INFRINGE ON ANY PATENT OR ANY OTHER INTELLECTUAL PROPERTY RIGHTS HELD BY OTHERS.

Sale of SIKA products are subject to the Terms and Conditions of Sale which are available at <https://usa.sika.com/en/group/SikaCorp/termsandconditions.html> or by calling 1-800-933-7452.

SIKA warrants this product for one year from date of installation to be free from manufacturing defects and to meet the technical properties on the current Product Data Sheet if used as directed within the product's shelf life. User determines suitability of product for intended use and assumes all risks. User's and/or buyer's sole remedy shall be limited to the purchase price or replacement of this product exclusive of any labor costs. **NO OTHER WARRANTIES EXPRESS OR IMPLIED SHALL APPLY INCLUDING ANY WARRANTY OF MERCHANTABILITY OR FITNESS FOR A PARTICULAR PURPOSE. SIKA SHALL NOT BE LIABLE UNDER ANY LEGAL THEORY FOR SPECIAL OR CONSEQUENTIAL DAMAGES. SIKA SHALL NOT BE RESPONSIBLE FOR THE USE OF THIS PRODUCT IN A MANNER TO INFRINGE ON ANY PATENT OR ANY OTHER INTELLECTUAL PROPERTY RIGHTS HELD BY OTHERS.** Sale of SIKA products are subject to the Terms and Conditions of Sale which are available at usa.sika.com.

PAREXNuTechStuccoMVSCI-en-US-(06-2025)-1-1.pdf

